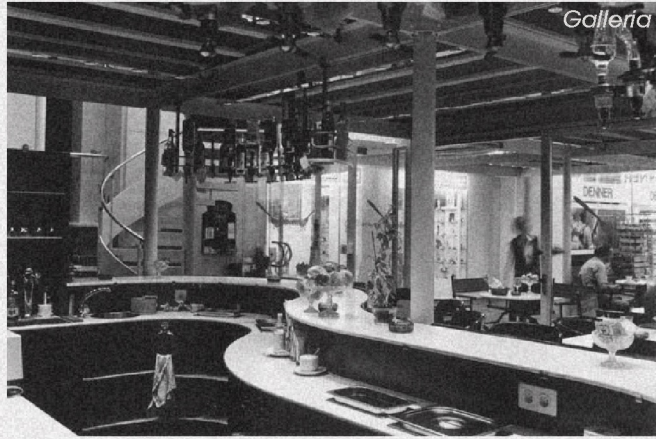
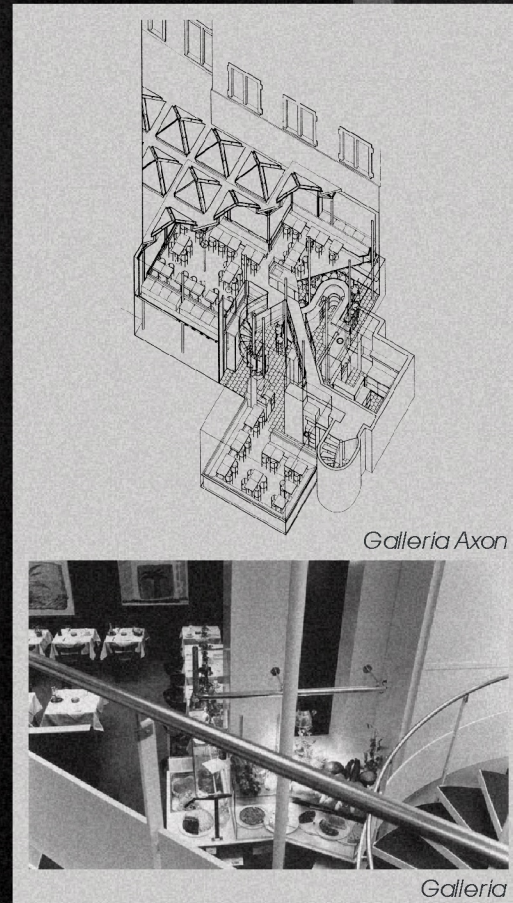


Early dining levels studies



Atelier 5 designed the restaurant called Galleria in Berne, Switzerland. It is in an interior courtyard in a former business building in the Old City. The complexity of the architecture of the small restaurant is enhanced by the proximity of the new steel construction to a massive old masonry building. The character of the restaurant is determined essentially by the clearly discernible architecture. The courtyard, and the restaurant itself, is roofed over with a delicate steel and glass construction and divided by regularly arranged rows of supporting posts. The clean style and layout helped my perspective in designing a multilevel layout.





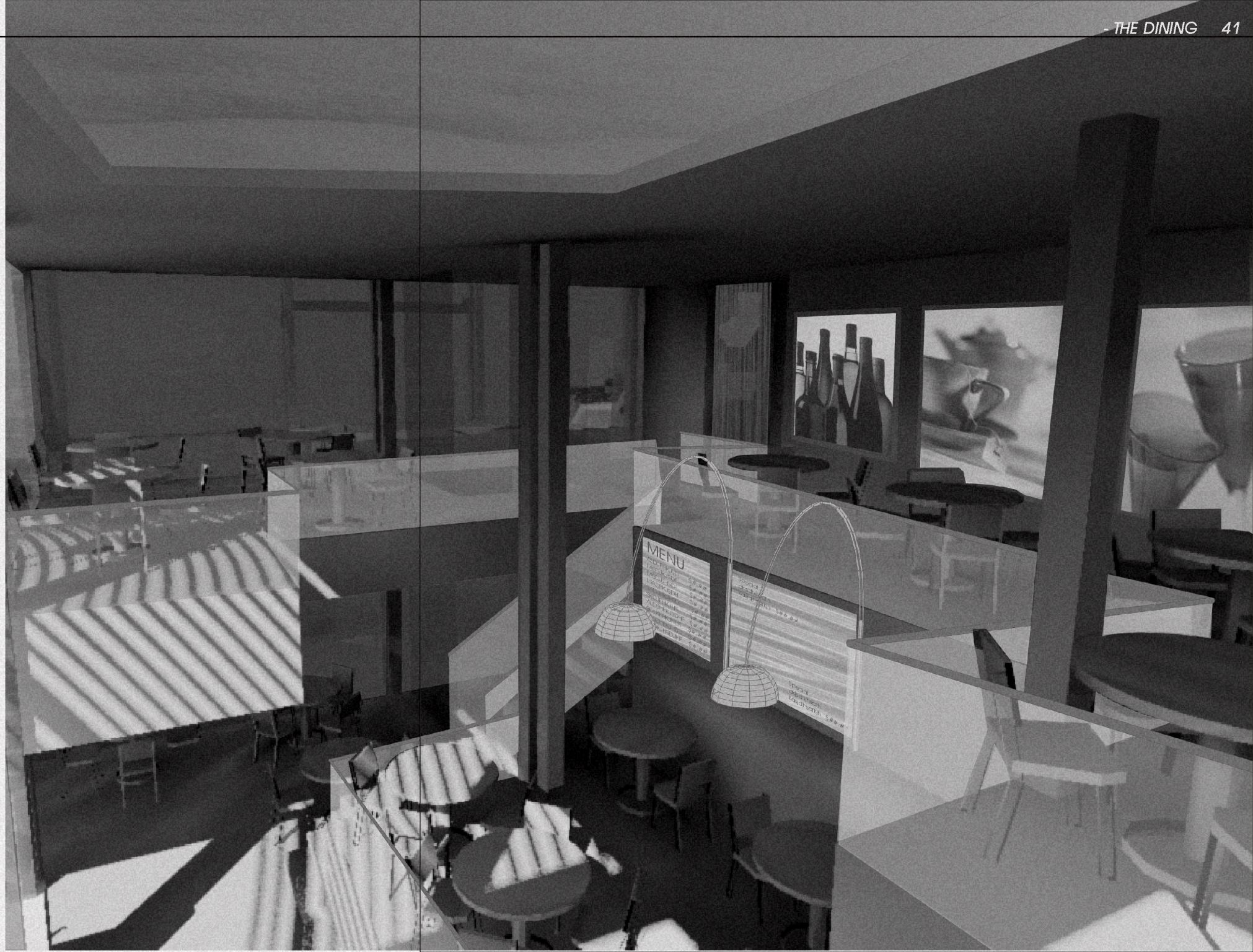
View of upper level dining

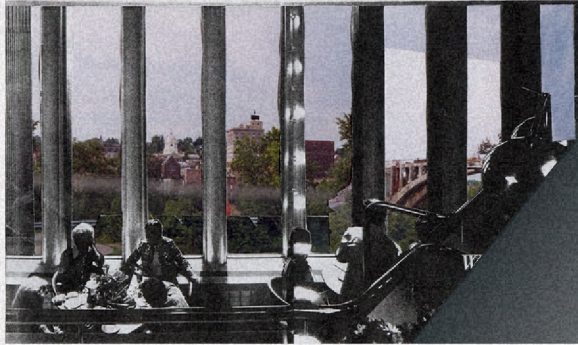
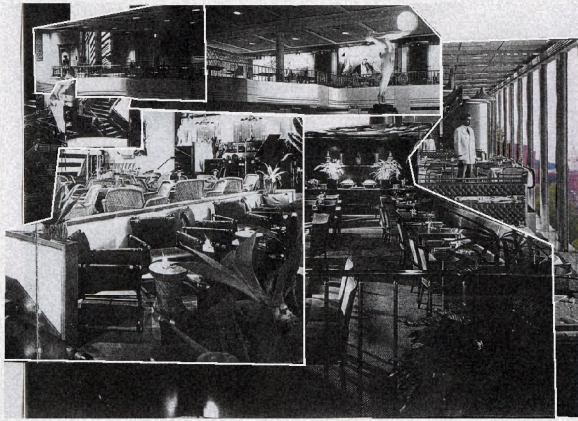
In order to maximize views from the project, service areas such as kitchen and storage spaces are tucked into the hillside, freeing up the outer perimeter for public spaces. With service areas out of sight, patrons' attention is focused on the view out the framework.

From the time they exit their vehicles, then proceed beneath the covered walkway, and emerge either to stroll down the stairs or take the walkways to the elevator, striking perspectives present themselves.



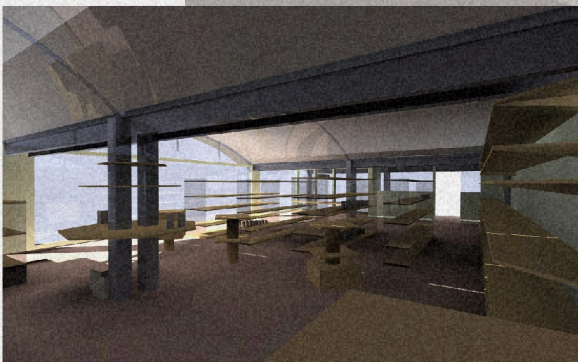
View of lower level dining



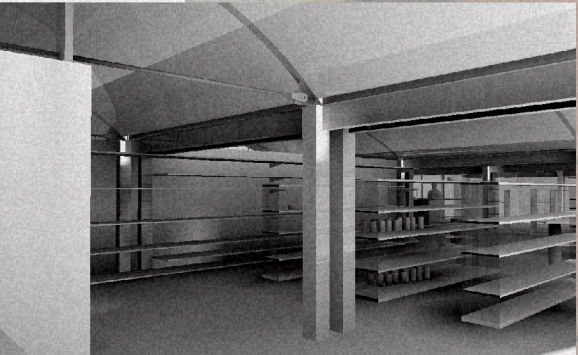


Collage studies for different dining areas
Right - Interior image





Interior looking toward river



Interior looking through store



Exterior view of market

Interior counter area



The store is an extension to the summer farmers' market. Serving the community year round it provides a location for local and organically grown food. The central stair divides the restaurant and store.

