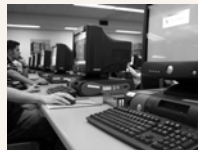


Collaborative Services of Libraries and Other Campus Units

Richard Meyer and Tyler Walters

Effecting the Transition in Three Parts

- 1. Recognizing motivators
- 2. Reshaping facilities
- 3. Refocusing services



Part I: Recognizing Motivators

- Consolidation of journal publishing
- Escalating journal prices
- Online delivery of research output
- Collaboration needs of students
- Increasing emphasis on undergrads and collaborative problem solving
- Students' simultaneous need for IT and bibliographic resources
- Overlap of Library roles with IT, Advising, Tutoring, Writing
- Flattening world



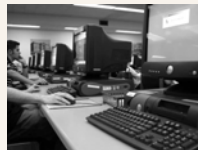
From Print to Digital -- or from Linearity to Sphericity

- Acquisitions: buy books via vendor and journals item by item
- Cataloging: produce card or film static catalog
- Public Services: point them to the right print tools / sources
- Acquisitions: everything comes online in a package
- Cataloging: added metadata comes with the package
- Public Services: a mixed library and computer user support environment



... to which we must add

- Digital initiatives: THE campus repository for intellectual and informational delivery
- Special collections: no longer a sidebar; now a very important host to campus history and societal definition -- dissertations, campus news, administrative speeches, radio, public relations, and preservation of identity



Part II: Reshaping Facilities

- Georgia Tech influenced by observations of other campuses
- Experiments intended to shape ILRC
- Staff reallocation and job revision
- OIT and other partners embedded
- Coordinated management arrangement
- Infrastructure technology support



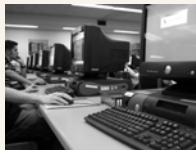
Georgia Tech's experimental learning commons

- The Library West Commons (LWC) opened in August 2002 --- 6,000 square feet
 - Contains 100 networked computers
 - Has a single user orientation
 - Staff from OIT next to reference
- The Library East Commons (LEC) opened in August 2006 --- 9,000 square feet
 - Contains 30 group study computers
 - A multiple user orientation
 - Special library staff

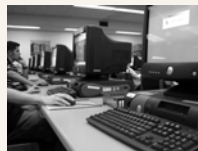


Library West Commons

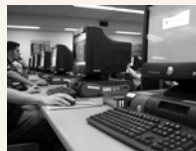
The LWC



Life in the LWC



Another view of the LWC



Multimedia support corner ...

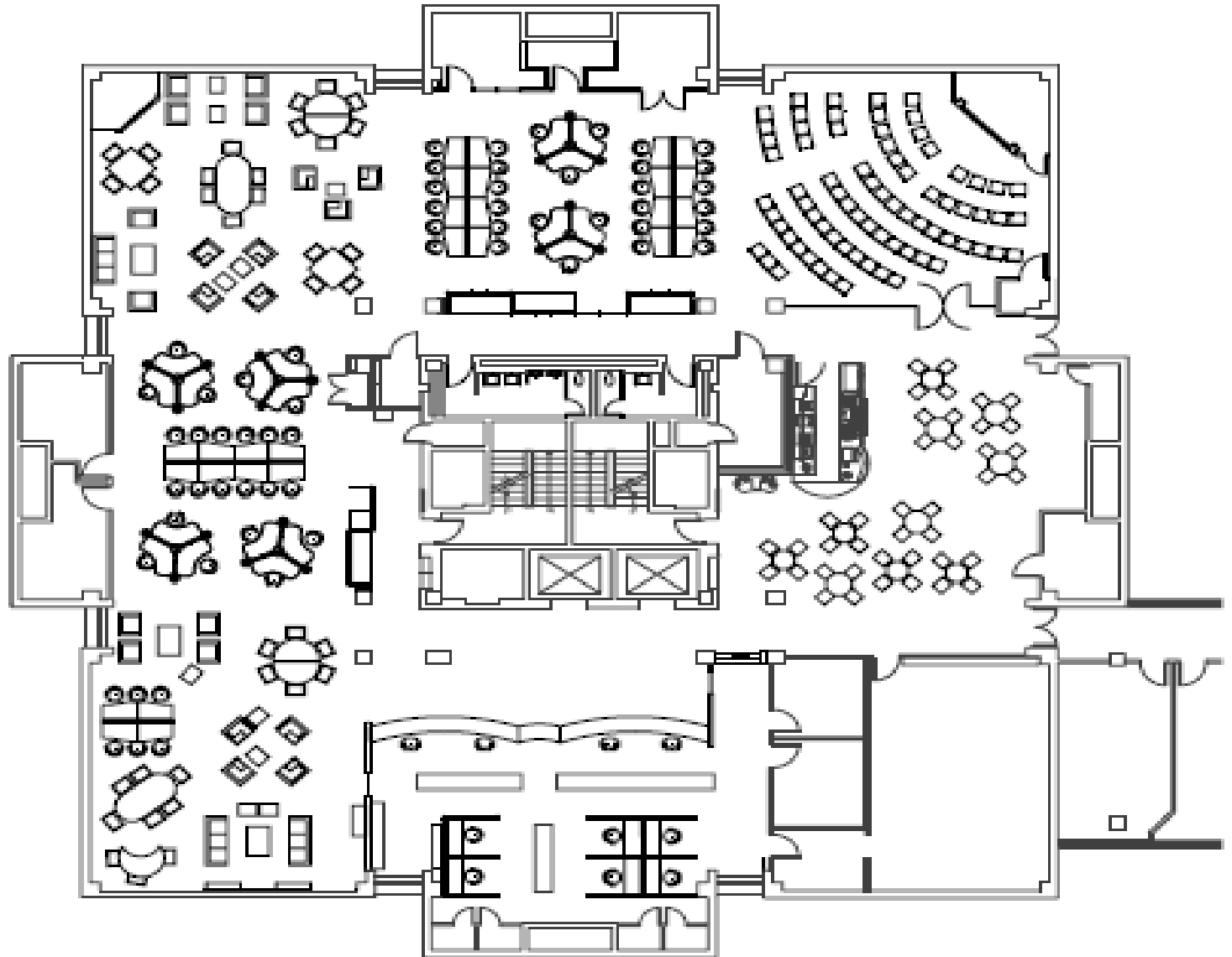


Transition to LEC

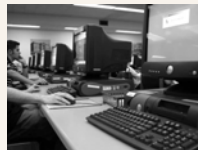
- LWC was single user oriented and had limited capability for students to shape their area of workspace / collaboration
- LEC is multi-user oriented and highly flexible for user arrangements and collaborative work
- LEC also has macro spaces for theatre, café and student displays



Library East Commons



Sample LEC collaboration

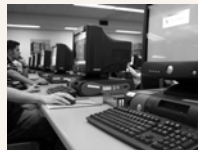


Longer range view



Summary

- These spaces are within the Library, but owned and operated by the Library and OIT
- Equipment all refreshed by OIT with student fee support
- Services **collaboratively** supported by Library, OIT and Center for Teaching and Learning
- Spaces provided for use of tutoring, advising, and writing center and for undergraduate **collaborative** engagement

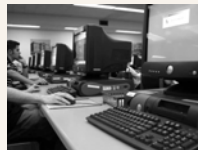


Part III: Refocusing Services

Time for Tyler Walters to talk ...

Focus on “**Digital Services:**”

1. Library Collaborations with Campus Units
2. Serving Undergraduate Students



Refocusing with “Digital” Services

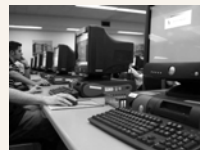
1. SMARTech Repository Services

“SMARTech, or **Scholarly Materials And Research @ Georgia Tech**, is a repository for the capture of the intellectual output of the Institute in support of its teaching and research missions”

- DSpace installation, opened August, 2004
- 10,000 objects / 70+ (sub)communities / 160+ collections
- 1,000,791 item records viewed, 489,292 items downloaded, and 50,434 searches made (July '05 – June'06)
- SMARTech is the:
 - **4th largest** of 58 DSpace repositories in the United States
 - **13th largest** of 179 DSpace repositories in the world
 - **13th largest** of 201 repositories on any software in U.S.
 - **55th largest** of 764 repositories on any platform in the world

Source: Registry of Open Access Repositories (<http://archives.eprints.org/>)

accessed 2006-11-15)



Refocusing with “Digital” Services

2. Epage@Tech

(Electronic Press At Georgia Tech)

- **Publishing**

 - Electronic Books

 - Journals

 - Conference Proceedings

- **Capturing**

 - Instructional Materials

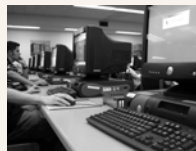
 - Multimedia

- **Hosting**

 - Conferences

 - Symposia

 - Lecture Series



Capture 'Live' Scholarly Communications Events

Library East Commons:

- Student displays of creative activity, research
- Campus speakers, student productions, etc.
- Audio/video, digital renderings, in SMARTech

Examples:

- Faculty Tuesday Talks (in Library)
- GT President Clough speaking in library
- LCC symposium Nov 17, History of Women's Health



E-Publishing (Epage)

Current Major Activity:

- *Information Technologies and International Development*
 - MIT Press, Univ. of Maryland, GT School/Int'l Affairs, GT Library
 - ARL/ACRL Scholarly Communications Institute, Dec. '06
 - Currently using Open Journal Systems (OJS) software

Student-related Activity:

- *GT Journal of Undergraduate Research* (electronic only)
 - * Collaboration with Director of Undergraduate Research, LCC
- *The Technique* (student newspaper)
 - * Collaboration with GT Student Publication Board, OIT



Extending Repository Services

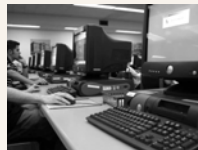
■ Media and Learning Object Repository

- Collaboration with ECE Digital Media Lab, DLPE as advisory

*This need is an outgrowth of student multimedia projects (research/creative endeavor), and faculty's learning objects and digitally-captured courses

■ Undergraduate Research Option

- Increasing growth of UG research - programs, scholarships, awards, international research
- Submit output to SMARTech (via ETD-db software)
- Collaboration with Director of Undergraduate Research



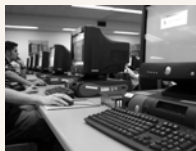
Learning Technology Collaborations

Context:

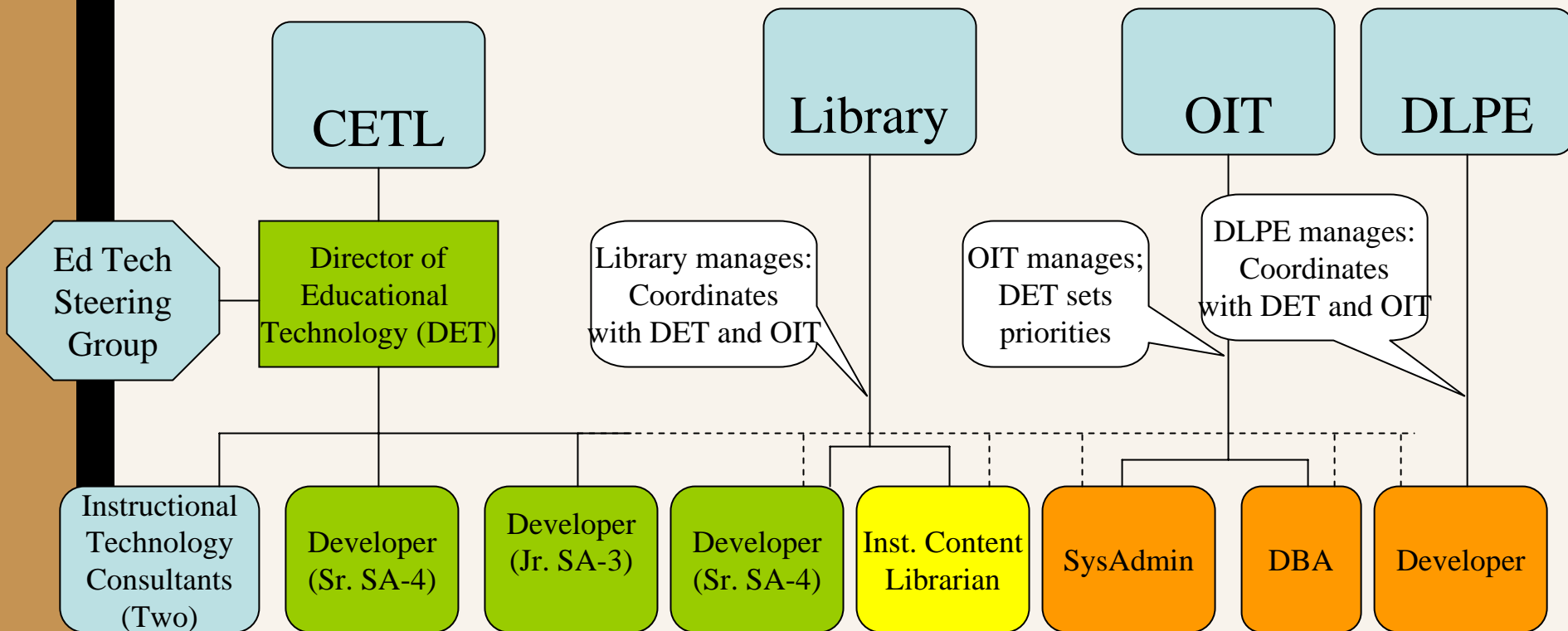
- Academic Technologies Advisory Cmte. (OIT)
- Virtual Learning Strategy Group (CTO-led)
- Tegrity Course Capture Software Pilot Team (DLPE/OIT)
 - Library provides student training
- Campus Portal Steering Cmte. (OIT/Faculty/support units)

Driver: Migration from WebCT CE to Sakai, 2006-07

- GT moving to Sakai – Catalyzes new LT organization
- Library role:
 - 1) Integration of library technologies, content, services
 - 2) Assist instructional designers w/ training faculty and students



Learning Technologies Preliminary Organization Chart



Questions?

- Contact us at:
- Richard Meyer
richard.meyer@library.gatech.edu
- Tyler Walters
tyler@gatech.edu

