

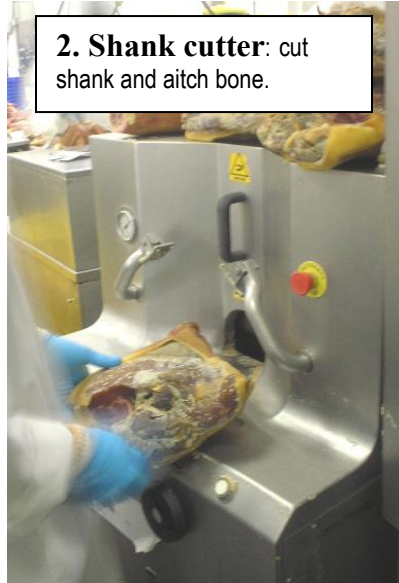


Deboning

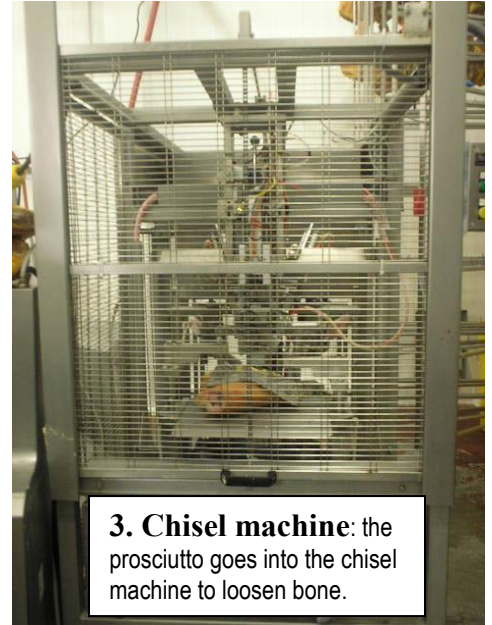
EQUIPMENT



1. Prosciutto comes in bins.



2. Shank cutter: cut shank and aitch bone.



3. Chisel machine: the prosciutto goes into the chisel machine to loosen bone.

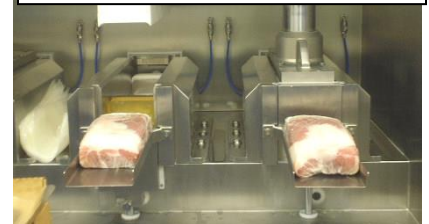


4. Deboning: removes the bones.



5. Skinner machine: removes outside skin

6. Trim the prosciutto. Then the prosciutto goes into the Mattonella press to take the "mattonella" shape



7. Ham press: prosciutto now needs to be pressed



8. Sealer machine: prosciutto bags are sealed

9. Steam tunnel: shrinks bags around prosciutto



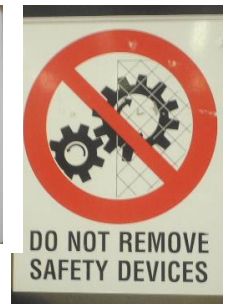
NOTES:

- ✓ Remember: wash your hands and follow the Employee Hygienic Practices.
- ✓ Personnel enter into to processing areas through the personnel access doors only and don't go to other departments without the Supervisor or QA permission.
- ✓ Prevent cross contamination between Fresh and Ready-to-Eat products.
- ✓ Every employee must use foot bath/powder/spray before entering department. Location: Entrance to Deboning from Fresh Ham hallway and Main Entrance to plant.
- ✓ Ensure product does not contain metal. *All products are to be run through the metal detector.*
- ✓ Prevent contamination of Ready-to-Eat products from plant environment.
- ✓ Staff shall not eat or taste any product being processed in food handling/contact area.
- ✓ Ensure bone/inedible barrels do not cross contaminate the Ready-to-Eat production areas with *Listeria monocytogenes* – Do not drag barrels on floor.
- ✓ Don't put a fall product on the table (prevent contamination from floor-tables-hands), refers that to your supervisor and follow GMP procedures - RECONDITIONED.
- ✓ If there are no cleaned and sanitized bone/inedible barrels in the room, then the barrels will need to be thoroughly cleaned.
- ✓ Only designated person are allowed to go in spices room or hazardous chemicals and toxic substances.
- ✓ The direct supervisor of the department, QA, or SQF department shall periodically monitor employees' knowledge of their job.

SAFETY:



Sign as on the DOOR



Sign as on the SHANK CUTTER and the PRESS

WEAR THE PPE



Signs as on the PRESS

