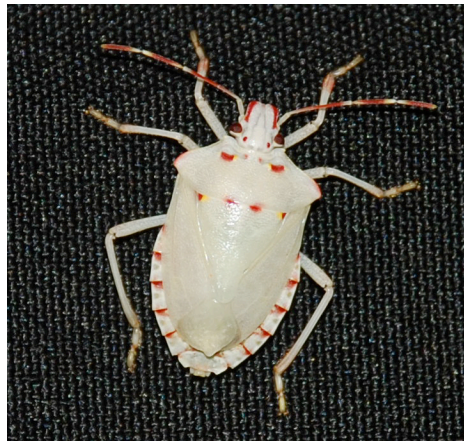


*ID Lab Publication*

*Revised 2011*

# **Insect Identification Laboratory**

## **Annual Report 2010**



**Eric R. Day**

**Douglas G. Pfeiffer**

**Charlotte Oliver**

**Department of Entomology**

**College of Agriculture and Life Sciences**

**Virginia Cooperative Extension**

**Virginia Polytechnic Institute and State University**

---

## TABLE OF CONTENTS

Topic	Page
Introduction .....	2
Insects Surveys	
Collaborators	
Total Number of Specimens Received	
Specimens Received by Month	
Arthropods Received by Host Plants	
Source of Insects by County	
Sample Source	
Client Groups	

---

### INTRODUCTION

A total of 1137 requests were received in 2010. This report summarizes the activity of the Insect Identification Laboratory at Virginia Tech for 2010. The laboratory is located in 205A Price Hall. The lab is managed by Eric Day, Lab Manager, and Doug Pfeiffer, Extension Entomologist, Department of Entomology. Luke Harris, Charlotte Oliver, and Ethan Robertson also worked in the Lab in 2010.

Of the samples received in 2010, 94% of the samples, 1073 out of 1137, requested control recommendations.

Also from the samples received in 2010, 21% of the samples, 234 out of 1137, were forwarded from the Plant Disease Clinic, managed by Mary Ann Hansen and Elizabeth Bush. The remaining 77% were sent directly.

Specimens are identified and recorded in the lab, then if necessary sent for control recommendations and additional comments from Extension Entomologists who handle particular commodity groups. All specimen data are entered into the Insect I.D. Lab computer database on the Virginia Tech mainframe computer. The database greatly facilitates sorting and storage of the information. Some of the records were sent via microcomputer to the Cooperative National Plant Pest Survey and Detection Program (USDA, APHIS, PPQ). We at Virginia Tech acknowledge support provided by this program.

Whenever possible insects are identified to the species level. Common names are used where possible because of their wide recognition. To facilitate mailing insects and insect damaged plant specimens to the lab, local offices of Virginia Cooperative Extension are provided with Insect Identification and Diagnosis Request forms (form 444-113), alcohol vials, and mailing tubes. Specimens also may be brought directly to the lab or mailed to:

Insect Identification Laboratory  
Extension Entomology  
205A Price Hall, VPI and SU  
Blacksburg, VA 24061-0319  
(540) 231-4899  
idlab@vt.edu

<http://www.idlab.ento.vt.edu>

---

**Persons providing identifications and/or control recommendations:**

*Identifications and control recommendations covering most commodities performed by:*

Mr. Eric R. Day Manager, Insect Identification Laboratory

*Timely and valuable identifications and/or control recommendations were also provided by:*

Dr. Tom Kuhar Assistant Professor of Entomology Vegetable Pests

Dr. Richard D. Fell Professor of Entomology Apiculture and Stinging Insects

Dr. Dini Miller Assistant Professor of Entomology Structural and Household Insects

Dr. Ames Herbert Associate Professor of Entomology Soybeans, Small grains, Peanuts, and cotton

Mr. Steve Hiner Technical Support Staff Aquatic Insects and Invertebrates

Dr. Michael Kosztarab Emeriti Professor of Entomology Scale Insects

Dr. Theresia Dellinger Post-Doctoral Staff Entomology

Dr. Douglas G. Pfeiffer Professor of Entomology Fruit and Nuts

Dr. Scott Salom Associate Professor of Entomology Forest and Conifer

Dr. Peter Schultz Station Director, Hampton Roads Ornamentals

Dr. Paul J. Semtner Professor of Entomology Tobacco

Dr. J. Reese Voshell Professor of Entomology Aquatic Insects

Dr. Roger Youngman Associate Professor of Entomology Corn, Small grains, and Grasses

Count of HOST CATEGORY	MONTH COLLECTED												Grand Total
HOST CATEGORY	Jan	Feb	Mar	Apr	May	Jun	Jul	Aug	Sep	Oct	Nov	Dec	Grand Total
ANIMAL			22					1	2	3		1	29
APICULTURAL			1					1	1				3
FIELD CROP			1		4	2	2	4	1		3		17
FRUITS,NUTS		4	2		10	8	9	17	1	2	11	1	85
HOUSEHOLD	15	0	12	15	21	7	1	20	4	6	15	5	231
HUMAN		2	2	6	8	3	9	11	3	9	6	1	80
LAWNS, TURF	1	1	2	3	9	1	4	2	3	4			30
ORNAMENTALS	6	3	32	51	47	1	8	49	2	7	25	4	425
STORED PRODUCTS	2	7	8	10	5	5	7	8	0	3	3	3	81
STRUCTURAL		3	8	13	7	6	3	2	0	6	4	6	68
VEGETABLES			1	2	8	8	7	16	7	3	6		88
Grand Total	24	3	91	10	11	8	5	13	3	8		20	1137

Count of Client Source	Total
BUSINESS OR OFFICE	52
COMMERCIAL GROWER, FARMER	104
HOMEOWNER	799
LANDSCAPER, ARBORIST	22
MEDICAL DOCTOR	4
NATURE CENTER, PARK, SCHOOL, CAMP	8
OTHER	5
PEST CONTROL OPERATOR	33
STATE/FEDERAL/LOCAL GOVERNMENT	54
UNIV. RESEARCHER	55
VET	1
Grand Total	1137

Count of INSECT COMMON NAME	M O N T H												Grand Total
INSECT COMMON NAME	Jan	Feb	Mar	Apr	May	Jun	Jul	Aug	Sep	Oct	Nov	Dec	
ACROBAT ANTS					1	1		1	1				4
ALFALFA WEEVIL					1								1
ALLEGHENY MOUND ANT					4	2							6
AMBER SNAIL								1					1
AMERICAN COCKROACH	1												1
AMERICAN DOG TICK								1					1
AMERICAN ERMINE MOTH						1							1
ANDRENID BEES				1	5								6
ANELAPHUS TWIG PRUNER						1							1
ANOBIID POWDERPOST BEETLES							1						1
ANTHOCOMUS EQUESTRIS				1									1
ANTHOMYIID FLIES			1			1							2
ANTHRIBUS NEBULOSUS						1							1
ANTLIKE FLOWER BEETLES		1											1
ANTS					1	1	1						3
APHID PARASITE				1									1
APHIDS				4	2	1		1	1		2		11
APPLE TWIG BORER						1							1
ARBORVITAE LEAFMINER				1									1
ARMYWORM								2	1				3
ASH FLOWER GALL				1									1
ASIAN TIGER MOSQUITO								1					1
ASIATIC GARDEN BEETLE						2	2	1					5
AZALEA CATERPILLAR									1				1
AZALEA LACE BUG			2	1	3	1							7
BACKSWIMMERS						1							1
BAGWORM								1					1
BALSAM WOOLLY ADELGID											1		1
BAMBOO POWDERPOST BEETLE		1					1					1	3
BARBERRY WEBWORM							1						1
BARK BEETLES				11	1		1				2		15
BAT BUG						1		1					2
BAT BUGS							1						1
BEAN LEAF BEETLE								1					1
BED BUG	1				1		2	2	1				7
BEECH SCALE			1										1
BEETLES	1			1					1	2			5
BIRD MITES					2								2
BLACK AND RED STINK BUG						1	1						2
BLACK AND YELLOW MUD DAUBER					1								1
BLACK CARPENTER ANT		3	1	3		4	2						13
BLACK CARPET BEETLE			1	1	1	2	3	1		1			10
BLACK CUTWORM									1				1
BLACK FLIES					1						1		2

BLACK SOLDIER FLY			1				1							2
BLACK VINE WEEVIL	1													1
BLACK WIDOW SPIDER								2						2
BLACKBERRY PSYLLID				1										1
BLACKHEADED PINE SAWFLY			1											1
BLACKJACKET				1										1
BLINDED SPHINX				1										1
BLOW FLIES		1												1
BLUE BOTTLE FLY		2												2
BLUEBERRY MAGGOT	1													1
BORERS		1	1											2
BOXELDER BUG		1		2						1				4
BOXWOOD LEAFMINER		1	1	1	1									4
BOXWOOD MITE	1	4			2	4		1	1	1				14
BROAD HEADED BUG					1									1
BROAD MITE	1													1
BROADNECKED ROOT BORER						3								3
BRONZE BIRCH BORER						1								1
BRONZED CUTWORM				1										1
BROWN FRUIT CHAFER								1						1
BROWN MARMORATED STINK BUG	2	1				2	2	1		1	1			10
BROWN PRIONID								1						1
BROWN RECLUSE SPIDER							1							1
BROWN SOFT SCALE	1													1
BROWN WIDOW SPIDER								1						1
BROWNBANDED COCKROACH				2										2
BUCK MOTH			2	1										3
BUPRESTID BEETLES				1	13	6	5							25
CABBAGE APHID												1		1
CABBAGE MAGGOT					1						1			2
CALICO SCALE			1	1										2
CALIFORNIA RED SCALE										1				1
CAMEL CRICKETS			1					1						2
CAMELLIA SCALE			1											1
CAMPONOTUS DISCOLOR													1	1
CARPENTER BEE			1											1
CARPENTERWORM		1	1											2
CARPET BEETLES					1					1	1			3
CASEMAKING CLOTHES MOTH										1				1
CAT FLEA						1								1
CATALPA SPHINX								1						1
CATERPILLARS		1			1			1	1				1	5
CECROPIA MOTH								1						1
CELERY LEAFTIER								1						1
CHARISSA PILOSA				1										1
CHERRY SPINDLE GALL					2									2
CHINESE MANTID		1												1
CHLAENIUS LATICOLLIS						1								1
CICADA KILLER							5	1	1					7

CITRUS MEALYBUG								1					1
CITRUS WHITEFLY			1										1
CLICK BEETLES			2										2
CLOVER MITE							1		1			1	3
CLOVER ROOT CURCULIO						1							1
COLORADO POTATO BEETLE								1					1
COMBFOOTED SPIDERS											2	1	3
CONEHEADED GRASSHOPPERS									1				1
CONOTRACHELUS ELEGANS									1				1
CORN EARWORM										1	1		2
CORN ROOTWORMS									1				1
COSSONUS BARK WEEVILS										1			1
COTTONY CAMELLIA SCALE			1			3	2	1				1	8
COTTONY MAPLE LEAF SCALE						1							1
COTTONY TAXUS SCALE						1							1
COTTONY CUSHION SCALE	1												1
COULD NOT DIAGNOSE			1	1				1		1			4
CRAB SPIDERS	1												1
CRANE FLIES				1									1
CRAPE MYRTLE APHID						1							1
CRICKETS			1										1
CRYPTOMERIA SCALE											1		1
CUCUMBER BEETLES												1	1
DADDY-LONGLEGS						1							1
DARKWINGED FUNGUS GNATS			1					1				3	6
DIAMONDBACK MOTH											1		1
DOBSONFLY								2	1				3
DRAGONFLIES												1	1
DRUGSTORE BEETLE	1	1			1	2	1	2			2		10
DRYWOOD TERMITES											1		1
DUNG BEETLES				1									1
EARTHWORMS			1				1					1	3
EARWIGS			1										1
EASTERN HERCULES BEETLE									1	1			2
EASTERN SUBTERRANEAN TERMITE			3	6		5	1	1					16
EASTERN TENT CATERPILLAR						1	1	1					3
EASTERN YELLOWJACKET								1					1
ELLESCHUS EPHIPPIATUS							1						1
ERIOPHYID MITES									1				1
EUDERCES PICIPES	1												1
EUONYMUS LEAF NOTCHER						1							1
EUONYMUS SCALE							1	1					2
EUROPEAN HORNET								2			2	1	5
FALL WEBWORM							2						2
FALSE POWDERPOST BEETLES						1							1
FISHING SPIDER							2	1			1		4
FISHING SPIDERS								1					1
FLAT BARK BEETLES				1									1
FLATHEADED APPLETREE BORER	1								1			1	3

FLATHEADED BORERS	1									1
FLATID PLANTHOPPERS				7						7
FLEAS								1		1
FLESH FLIES		1								1
FLIES	1	1			1	1				4
FLOWER THRIPS				1	6	2	1	3	1	14
FOREIGN GRAIN BEETLE							1		1	2
FOURLINED PLANT BUG				3			1			4
FRINGETREE LACE BUG						1				1
FUNNEL WEAVERS		1			2					3
GALL MITES					1					1
GARDEN MILLIPEDE		1				1	1			4
GARDEN MILLIPEDES								1		1
GERMAN COCKROACH					1			2	1	5
GERMAN YELLOWJACKET									1	1
GIANT RESIN BEE				1			1			2
GIANT WILLOW APHID									1	1
GLOOMY SCALE			1	1	2				1	5
GOUTY OAK GALL						1				1
GRAIN MITE		1								1
GRANARY WEEVIL			1							1
GRANULATE AMBROSIA BEETLE						1				1
GRAPE FLEA BEETLE				1						1
GRAPE LEAF AND TENDRIL GALLS				1						1
GRAPE TUBE GALL					1					1
GRAPELEAF SKELETONIZER					1					1
GRASS CARRIER WASP								1		1
GRASS FLIES			1							1
GRASS MIDGES			2							2
GREEN BOTTLE FLY									1	1
GREEN FRUITWORM			1							1
GREEN LACEWINGS					1					1
GREEN PEACH APHID					1				1	2
GROUND BEETLES		1		1	2	2			1	7
GYPSY MOTH				1		1				2
HACKBERRY LEAFSLUG							1			1
HACKBERRY PSYLLIDS					1					1
HAMMATOCERUS PURCIS							1			1
HARPALUS PENNSYLVANICUS					2	1		1		4
HARRIS'S THREE-SPOT							1			1
HAWTHORN LACE BUG									1	1
HELIOCOVERTA VIRESICANS							1			1
HEMISPHERICAL SCALE			1							1
HICKORY HORNED DEVIL							1			1
HICKORY LEAF STEM GALL					1					1
HICKORY SHUCKWORM								1		1
HONEY BEE							1			1
HORNWORMS						1				1
HORSE FLIES				1						1



HORSEHAIR WORMS						2	1			1		4
HOUSE CENTIPEDE							1					1
HOUSE SPIDERS									2			2
HUMMINGBIRD MOTH						2						2
HUMPBACKED FLIES	1									1		2
HUMPBACKED FLY								1				1
HUNTING SPIDERS						1		1	1			3
ICHNEUMONID WASPS							1					1
IMPERIAL MOTH		1										1
IMPORTED CABBAGEWORM						1						1
IMPORTED WILLOW LEAF BEETLE			1	1								2
INDIAN MEAL MOTH									1			1
INDIAN WAX SCALE									1	1		2
INDIANMEAL MOTH	2	2	2			1	2	2	1	1		13
INSECTS						2	1					3
IO MOTH								1				1
IPS ENGRAVER BEETLES						1						1
ISCHNODEMUS FALICUS									1			1
ISOPOD			1									1
ISOTOMID SPRINGTAILS	1	1			1	1	3	1				8
IVORYMARKED BEETLE					1							1
IXODES TICKS				1			1			1		3
IXODES WOODI									1	1		2
JAPANESE BEETLE				1	3		4	1				9
JAPANESE MAPLE SCALE										1		1
JUNE BEETLES							1	1				2
JUNIPER SCALES		1				1		1				3
JUNIPER WEBWORM								1				1
KATYDIDS									1			1
LADY BEETLES						1		1				2
LARDER BEETLE		1							2			3
LASIU ANT							1					1
LATANIA SCALE		2						1				3
LEAF BEETLES			1									1
LEAF SKELETONIZERS								1				1
LEAFCUTTING BEES		1										1
LEAFFOOTED BUG					1		1					2
LEAFFOOTED BUGS								1				1
LEAFHOPPERS				1	1	1			1			4
LEAFROLLING WEEVILS										1		1
LECANIUM SCALES			1					1				2
LEOPARD MOTH					1							1
LEPIDOSAPHES SCALE		1										1
LESSER MEALWORM	2		1						1			4
LICHENOPHANES BICORNIS							1					1
LIGHTNING BEETLES					1							1
LOCUST LEAFMINER				1								1
LONE STAR TICK		1	1	3	2	3	5	1				16
LONG-BODIED CELLAR SPIDERS						1						1



ONION APHID			1							1	
ONION THRIPS					1	1				2	
ORANGE ASSASSIN BUG								1		1	
ORANGESTRIPED OAKWORM						1	1			2	
ORB WEAVERS								1		1	
ORIBATID MITES			1							1	
ORIENTAL CHESTNUT GALL WASP						1				1	
ORIENTAL FRUIT MOTH									1	1	
OYSTERSHELL SCALE									1	1	
PAINTED HICKORY BORER	1	1								2	
PALES WEEVIL						1				1	
PARASITIC WASPS		1		2						3	
PAVEMENT ANT				2	1				1	4	
PECAN SPITTLEBUG							1			1	
PENNSYLVANIA WOODS COCKROACH					1					1	
PERIODICAL CICADA				2						2	
PERSIMMON PSYLLA			1							1	
PESTICIDE BURN				1						1	
PHIDIPPUS AUDAX			1							1	
PHYMATA AMBUSH BUGS		1								1	
PINE BARK ADELGID		1	1	2	1			1	1	7	
PINE NEEDLE SCALE							1			1	
PINE ROOT APHIDS			1							1	
PINE SAWYERS							1	2	3	2	8
PINE SHOOT BEETLE			1								1
PINHOLE BORERS		1						1			2
PINK AND BLACK LADY BEETLE							1				1
PITYOGENES BARK BEETLES				1							1
PLANT BUGS				1		1			1		3
PLANTHOPPERS				1				1			2
PLEASING FUNGUS BEETLES			1								1
PLUM CURCULIO				4	1	1					6
PLUME MOTHS								1			1
POLYDESMIDA MILLIPEDES						1					1
POLYPHEMUS MOTH			1								1
POPLAR TENTMAKER						1					1
POTATO APHID									1		1
POTATO LEAFHOPPER						1					1
POTTER WASPS						1					1
POWDERPOST BEETLES	1		1		1	1	4	3	3	3	17
POWDER-POST BEETLES		1									1
PSOCIDS					1		2	2		1	6
PSYLLIDS							1				1
PTEROSTICHUS COMMUTABULIS					1						1
PTEROSTICHUS TRISTIS					1						1
PUBLILIA CONCAVA								1			1
PYRALID CATERPILLARS					1		1				2
PYRALID MOTHS			1								1
RAINBOW SCARAB						1					1

RAISIN MOTH								1	1
RED CARPENTER ANT		1							1
RED FLOUR BEETLE		1				1			2
RED NECKED CANE BORER	1							1	2
RED OAK BORER					2				2
REDHEADED ASH BORER		1			1				2
REDHEADED FLEA BEETLE							1		1
RED-SHOULDERED BUG							2		2
RED-SHOULDERED BUGS	1								1
REDSPOTTED ANTMIMIC				1					1
RHINONCUS PYRRHOPUS	1								1
RHODODENDRON BORER		1							1
RICE WEEVIL			1		1		2		4
ROBBER FLY						1			1
ROOT MAGGOTS				1					1
ROOT WEEVILS								1	1
ROSE STEM SAWFLY	1								1
ROSESLUG		1							1
ROUNDHEADED BORERS	1		2		1	2	2	1	9
ROVE BEETLE	1								1
ROVE BEETLES			1						1
RUDBECKIA PSYLLID			1						1
RUST MITES	1			1		1	1		4
SAP BEETLES	1		1	1					3
SAWFLIES			1	1	1				3
SAWTOOTHED GRAIN BEETLE			1		2	1		1	5
SCARITES GROUND BEETLE			1						1
SCOLIA DUBIA					1				1
SEED BUGS							1		1
SHARPSHOOTER			1						1
SHEETWEB WEAVER SPIDERS						1			1
SHINING FUNGUS BEETLES							1		1
SILVERFISH			1						1
SILVERLEAF WHITEFLY								1	1
SILVERSPOTTED SKIPPER			1						1
SMALL HIVE BEETLE	1								1
SMALLER YELLOW ANT			1					1	3
SMOKEYBROWN COCKROACH							1		1
SNAILS	1								1
SNOWBALL APHID				1				1	2
SOFT SCALES								1	1
SOLDIER BEETLES	1								1
SOLDIER FLIES							1		1
SOLITARY BEES			1						1
SOOTY MOLD		1							1
SOUTHERN LYCTUS	1	1	1						3
SOUTHERN RED MITE	1	1			1				3
SOUTHERN YELLOWJACKET							2		2
SPHECID WASPS			1	1					2





ARABIDOPSIS	DARKWINGED FUNGUS GNATS , ,	1
ARABIDOPSIS Total		1
ARBORVITAE	ARBORVITAE LEAFMINER <i>Argyresthia thuiella</i> (Packard) SPRUCE MITE <i>Oligonychus ununguis</i> (Jacobi) TAXUS MEALYBUG <i>Dysmicoccus wistariae</i> (Green)	1 6 2
ARBORVITAE Total		9
ARM	NO INSECTS FOUND , ,	1
ARM Total		1
AROUND CHIMNEY	BLACK CARPET BEETLE <i>Attagenus megatoma</i> (Fabricius)	1
AROUND CHIMNEY Total		1
ASH	ASH FLOWER GALL <i>Eriophyes fraxiniflora</i> Felt	1
ASH Total		1
ATTIC	WESTERN CONIFER SEED BUG <i>Leptoglossus occidentalis</i> YELLOWJACKETS , ,	1 1
ATTIC Total		2
AUCUBA	LATANIA SCALE <i>Hemiberlesia lataniae</i> (Signoret)	2
AUCUBA Total		2
AZALEA	AZALEA CATERPILLAR <i>Datana major</i> Grote and Robinson AZALEA LACE BUG <i>Stephanitis pyrioides</i> (Scott) FLATID PLANTHOPPERS , , SOUTHERN RED MITE <i>Oligonychus ilicis</i> (McGregor)	1 5 1 1
AZALEA Total		8
BACKYARD	BROADNECKED ROOT BORER <i>Prionus laticollis</i> (Drury)	1
BACKYARD Total		1
BANANA PLANT	RED-SHOULDERED BUG <i>Jadera haematoloma</i> (H.S.)	1
BANANA PLANT Total		1
BARBERRY	BARBERRY WEBWORM <i>Omphalocera dentosa</i> (Grote)	1
BARBERRY Total		1
BARN	BROWN RECLUSE SPIDER <i>Loxosceles reclusa</i> Gertsch & Mulaik FUNNEL WEAVERS , ,	1 1
BARN Total		2
BASEBOARD	NO INSECTS FOUND , ,	1
BASEBOARD Total		1
BASEBOARDS, WALLS	EASTERN SUBTERRANEAN TERMITE <i>Reticulitermes flavipes</i> (Kollar)	1
BASEBOARDS, WALLS Total		1
BASEMENT	CAMEL CRICKETS , , COULD NOT DIAGNOSE , , EASTERN SUBTERRANEAN TERMITE <i>Reticulitermes flavipes</i> (Kollar) EUDERCES PICIPES <i>Euderces picipes</i> (F.) FLEAS , , GRANARY WEEVIL <i>Sitophilus granarius</i> ODOROUS HOUSE ANT <i>Tapinoma sessile</i> (Say) POLYDESMIDA MILLIPEDES , , TENOMERGA CINEREUS <i>Tenomerga cinereus</i> VARIED CARPET BEETLE <i>Anthrenus verbasci</i> (Linnaeus) WOLF SPIDERS , , WOOD ROACHES <i>Parcoblatta</i> spp.	1 1 2 1 1 1 1 1 1 1 1 1 1
BASEMENT Total		13

BASIL	DARKWINGED FUNGUS GNATS , ,	1
	FLOWER THRIPS <i>Frankliniella tritici</i> (Fitch)	1
	PAVEMENT ANT <i>Tetramorium caespitum</i> (Linnaeus)	1
BASIL Total		3
BATHROOM	ACROBAT ANTS <i>Crematogaster</i> spp.	1
	BETTERLES , ,	1
	BLACK CARPENTER ANT <i>Camponotus pennsylvanicus</i>	2
	MEAL MOTH <i>Pyralis farinalis</i> Linnaeus	1
	PSOCIDS , ,	1
	SMOKEYBROWN COCKROACH <i>Periplaneta fuliginosa</i> (Serville)	1
	SPIDERS , ,	1
	TENEBRIOIDES BEETLES <i>Tenebriodes</i> sp.	1
	VARIED CARPET BEETLE <i>Anthrenus verbasci</i> (Linnaeus)	1
BATHROOM Total		10
BATHROOM	SPRINGTAILS , ,	1
BATHROOM Total		1
BEAM	GERMAN COCKROACH <i>Blattella germanica</i> (Linnaeus)	1
	SILVERFISH <i>Lepisma saccharina</i> Linnaeus	1
BEAM Total		2
BEAN, FAVA	IO MOTH <i>Automeris io</i> (Fabricius)	1
BEAN, FAVA Total		1
BEAN, GREEN	MEXICAN BEAN BEETLE <i>Epilachna varivestis</i> Mulsant	1
BEAN, GREEN Total		1
BEAN, LIMA	STINK BUGS , ,	2
BEAN, LIMA Total		2
BEAN, SNAP	FLOWER THRIPS <i>Frankliniella tritici</i> (Fitch)	1
	TWOSPOTTED SPIDER MITE <i>Tetranychus urticae</i> Koch	1
BEAN, SNAP Total		2
BEAN, SOY	ARMYWORM <i>Pseudaletia unipuncta</i> (Haworth)	1
	BEAN LEAF BEETLE <i>Cerotoma trifurcata</i> (Forster)	1
	SPIDER MITES , ,	1
BEAN, SOY Total		3
BEANS, BUTTER	TWOSPOTTED SPIDER MITE <i>Tetranychus urticae</i> Koch	1
BEANS, BUTTER Total		1
BED	BED BUG <i>Cimex lectularius</i> Linnaeus	2
	BOXELDER BUG <i>Leptocoris trivittatus</i> (Say)	1
	CATERPILLARS , ,	1
	LONE STAR TICK <i>Amblyomma americanum</i> (Linnaeus)	2
	MINUTE BROWN SCAVENGER BEETLES , ,	1
	RED FLOUR BEETLE <i>Tribolium castaneum</i> (Herbst)	1
	THRIPS , ,	1
BED Total		9
BEDDING	BAT BUGS <i>Cimex</i> spp.	1
BEDDING Total		1
BEDROOM	BAT BUG <i>Cimex adjunctus</i>	1
	BIRD MITES , ,	1
	BLACK CARPET BEETLE <i>Attagenus megatoma</i> (Fabricius)	1
	GROUND BEETLES , ,	1



	INDIANMEAL MOTH <i>Plodia interpunctella</i> (Hubner)	1
	LEAFCUTTING BEES , ,	1
	LONE STAR TICK <i>Amblyomma americanum</i> (Linnaeus)	1
	LONGLEGGED FLIES , ,	1
	PAINTED HICKORY BORER <i>Megacyllene caryae</i> (Gahan)	1
	WESTERN CONIFER SEED BUG <i>Leptoglossus occidentalis</i>	1
BEDROOM Total		10
BEE HIVE	SMALL HIVE BEETLE <i>Athena tumida</i>	1
BEE HIVE Total		1
BEECH	SOOTY MOLD , ,	1
BEECH Total		1
BEECH, AMERICAN	BEECH SCALE <i>Cryptococcus fagisuda</i>	1
	NO INSECTS FOUND , ,	1
BEECH, AMERICAN Total		2
BIRCH, RIVER	SPINY WITCH-HAZEL GALL APHID <i>Hamamelistes spinosus</i>	1
BIRCH, RIVER Total		1
BIRD NESTS	ANTHOMYIID FLIES , ,	1
	BLACK CARPENTER ANT <i>Camponotus pennsylvanicus</i>	1
	BLACK CARPET BEETLE <i>Attagenus megatoma</i> (Fabricius)	1
	BLOW FLIES , ,	1
	BLUE BOTTLE FLY <i>Calliphora vicina</i>	2
	CLICK BEETLES , ,	2
	CRICKETS , ,	1
	DUNG BEETLES , ,	1
	EARWIGS , ,	1
	FLESH FLIES , ,	1
	FLIES , ,	1
	GROUND BEETLES , ,	1
	ISOPOD , ,	1
	MILLIPEDES , ,	1
	MITES , ,	1
	MOTH PUPAE , ,	1
	PARASITIC WASPS , ,	1
	ROVE BEETLE , ,	1
	SNAILS , ,	1
	WASPS , ,	1
BIRD NESTS Total		22
BLACK EYED SUSAN	PUBLILIA CONCAVA <i>Publilia convava</i>	1
BLACK EYED SUSAN Total		1
BLACKBERRY	RED NECKED CANE BORER <i>Agrilus ruficollis</i> (Fabricius)	2
	STEM BORERS <i>Oberea</i> ,	1
	TWOSPOTTED SPIDER MITE <i>Tetranychus urticae</i> Koch	2
BLACKBERRY Total		5
BLACK-EYED SUSAN	RUDBECKIA PSYLLID <i>Bactericera antennata</i>	1
BLACK-EYED SUSAN Total		1
BLUEBERRIES	BLUEBERRY MAGGOT <i>Rhagoletis mendax</i> Curran	1
	MEALYBUGS , ,	1
	STINK BUGS , ,	1
BLUEBERRIES Total		3

BLUEBERRY	STEM BORERS <i>Oberea</i> ,	2
	YELLOWNECKED CATERPILLAR <i>Datana ministra</i> (Drury)	1
BLUEBERRY Total		3
BOAT	NO INSECTS FOUND , ,	1
BOAT Total		1
BOOKCASE	DRYWOOD TERMITES , ,	1
BOOKCASE Total		1
BOXWOOD	BOXWOOD LEAFMINER <i>Monarthropalpus buxi</i> (Laboulbene)	2
	BOXWOOD MITE <i>Eurytetranychus buxi</i> (Garman)	9
	ISOTOMID SPRINGTAILS , ,	1
BOXWOOD Total		12
BOXWOOD, AMERICAN	BOXWOOD LEAFMINER <i>Monarthropalpus buxi</i> (Laboulbene)	2
BOXWOOD, AMERICAN Total		2
BOXWOOD, ENGLISH	BOXWOOD MITE <i>Eurytetranychus buxi</i> (Garman)	4
	ORIBATID MITES , ,	1
	TUBE-TAILED THRIPS , ,	1
BOXWOOD, ENGLISH Total		6
BOXWOOD, ENGLISH	BOXWOOD MITE <i>Eurytetranychus buxi</i> (Garman)	1
BOXWOOD, ENGLISH Total		1
BRAMBLES	FLIES , ,	1
BRAMBLES Total		1
BUDDLIA	BLACK AND RED STINK BUG <i>Cosmopepla bimaculata</i>	1
BUDDLIA Total		1
BUILDING	BLACK CARPENTER ANT <i>Camponotus pennsylvanicus</i>	1
	CHLAENIUS LATICOLLIS <i>Chlaenius laticollis</i>	1
	HARPALUS PENNSYLVANICUS <i>Harpalus pennsylvanicus</i>	1
	SCARITES GROUND BEETLE <i>Scarites</i> spp.	1
BUILDING Total		4
BURNING BUSH	LEAF SKELETONIZERS , ,	1
BURNING BUSH Total		1
BUSH	CITRUS WHITEFLY <i>Dialeurodes citri</i> (Ashmead)	1
BUSH Total		1
CABBAGE	CABBAGE APHID <i>Brevicoryne brassicae</i>	1
	CABBAGE MAGGOT <i>Delia radicum</i> (Linnaeus)	2
	IMPORTED CABBAGEWORM <i>Pieris rapae</i> (Linnaeus)	1
CABBAGE Total		4
CABIN	ACROBAT ANTS <i>Crematogaster</i> spp.	1
CABIN Total		1
CAMELLIA	COTTONY CAMELLIA SCALE <i>Pulvinaria floccifera</i> (Westwood)	1
	FLATID PLANTHOPPERS , ,	1
CAMELLIA Total		2
CANTALOUPE	NOT AN INSECT , ,	1
	SPIDER MITES , ,	1
CANTALOUPE Total		2
CAR	BLACK CARPET BEETLE <i>Attagenus megatoma</i> (Fabricius)	1
	CARPET BEETLES , ,	1
	CICADA KILLER <i>Sphecius speciosus</i> (Drury)	1
	WINDOW FLIES , ,	1

CAR Total		4
CARPET	RICE WEEVIL <i>Sitophilus oryzae</i> (Linnaeus)	1
CARPET Total		1
CARPORT	CAMEL CRICKETS , , EASTERN HERCULES BEETLE <i>Dynastes tityus</i> (L.)	1 1
CARPORT Total		2
CEILING	ACROBAT ANTS <i>Crematogaster</i> spp. GROUND BEETLES , , INDIANMEAL MOTH <i>Plodia interpunctella</i> (Hubner)	1 1 2
CEILING Total		4
CEREAL	THIEF ANT <i>Solenopsis molesta</i> (Say)	1
CEREAL Total		1
CHERRY	CHERRY SPINDLE GALL , , EASTERN TENT CATERPILLAR <i>Malacosoma americanum</i> (Fabricius) JAPANESE BEETLE <i>Popillia japonica</i> Newman PERIODICAL CICADA <i>Magicicada septendecim</i> (L.)	2 1 1 1
CHERRY Total		5
CHERRY, KWANZAN	WHITE PEACH SCALE <i>Pseudaulacaspis pentagona</i> (Targioni-Tozzetti)	1
CHERRY, KWANZAN Total		1
CHERRY, WEEPING	APPLE TWIG BORER <i>Amphicerus hamatus</i> (F.) ASIATIC GARDEN BEETLE <i>Maladera castanea</i> (Arrow)	1 1
CHERRY, WEEPING Total		2
CHESTNUT	ORIENTAL CHESTNUT GALL WASP <i>Dryocosumus kuriphilus</i>	1
CHESTNUT Total		1
CHICKEN	GREEN BOTTLE FLY <i>Phaenicia sericata</i>	1
CHICKEN Total		1
CHINESE LANTERNPLANT	RED-SHOULDERED BUGS	1
CHINESE LANTERNPLANT Total		1
CHIVES	ONION THRIPS <i>Thrips tabaci</i> Lindeman	1
CHIVES Total		1
CHRYSANTHEMUM	CELERY LEAFTIER <i>Udea rubigalis</i> (Guenee)	1
CHRYSANTHEMUM Total		1
CHURCH	APHIDS , ,	1
CHURCH Total		1
CITRUS	COTTONY CUSHION SCALE <i>Icerya purchasi</i> Maskell	1
CITRUS Total		1
CLEMATIS	MARGINED BLISTER BEETLE <i>Epicauta pestifera</i> Werner	1
CLEMATIS Total		1
CLEMENTIS	MARGINED BLISTER BEETLE <i>Epicauta pestifera</i> Werner	1
CLEMENTIS Total		1
CLOSET	BLACK CARPET BEETLE <i>Attagenus megatoma</i> (Fabricius) MEAL MOTH <i>Pyralis farinalis</i> Linnaeus NO INSECTS FOUND , , SPIDERS , ,	1 1 1 1
CLOSET Total		4
COMPOST	BLACK SOLDIER FLY <i>Hermetia illucens</i> (Linnaeus)	2
COMPOST Total		2
CORN	ASIATIC GARDEN BEETLE <i>Maladera castanea</i> (Arrow)	1

	JAPANESE BEETLE <i>Popillia japonica</i> Newman	1
CORN Total		
CORN, SWEET	CORN ROOTWORMS <i>Diabrotica</i> spp.	1
CORN, SWEET Total		
COTTON	CORN EARWORM <i>Heliothis zea</i> (Boddie)	1
COTTON Total		
COULD NOT IDENTIFY	APHIDS , ,	1
COULD NOT IDENTIFY Total		
CRABAPPLE, SARGENT	WOOLLY APPLE APHID <i>Eriosoma lanigerum</i> (Hausmann)	1
CRABAPPLE, SARGENT Total		
CRAPE MYRTLE	CRAPE MYRTLE APHID <i>Tinocallis kahawaluokalani</i> (Kirkaldy)	1
	EUROPEAN HORNET <i>Vespa crabro germana</i> Christ	1
	GRANULATE AMBROSIA BEETLE <i>Xylosandrus crassiusculus</i>	1
CRAPE MYRTLE Total		
CRAWL SPACE	EASTERN SUBTERRANEAN TERMITE <i>Reticulitermes flavipes</i> (Kollar)	1
CRAWL SPACE Total		
CRYPTOMERIA	PINE ROOT APHIDS <i>Prociphilus</i> sp.	1
	ROUNDHEADED BORERS , ,	1
	SPRUCE MITE <i>Oligonychus ununguis</i> (Jacobi)	1
CRYPTOMERIA Total		
CUCUMBER	FLOWER THRIPS <i>Frankliniella tritici</i> (Fitch)	1
	STINK BUGS , ,	1
	WHITEFLIES , ,	1
CUCUMBER Total		
CYPRESS	JUNIPER SCALES <i>Carulaspis</i> spp.	1
	SPRUCE MITE <i>Oligonychus ununguis</i> (Jacobi)	2
CYPRESS Total		
CYPRESS, LEYLAND	AMERICAN ERMINE MOTH <i>Yponomeuta multipunctella</i>	1
	BAGWORM <i>Thyridopteryx ephemeraeformis</i> (Haworth)	1
	JUNIPER SCALES <i>Carulaspis</i> spp.	2
	MINUTE CYPRESS SCALE <i>Carulaspis minima</i>	2
	NO INSECTS FOUND , ,	1
	PSOCIDS , ,	1
	SPRUCE MITE <i>Oligonychus ununguis</i> (Jacobi)	1
CYPRESS, LEYLAND Total		
DAHLIA	FLOWER THRIPS <i>Frankliniella tritici</i> (Fitch)	1
	JAPANESE BEETLE <i>Popillia japonica</i> Newman	1
	NO INSECTS FOUND , ,	1
	THRIPS , ,	1
DAHLIA Total		
DAYLILY, "CONNIE BURTON"	SPIDER MITES , ,	1
DAYLILY, "CONNIE BURTON" Total		
DECK	MAY BEETLES <i>Phyllophaga</i> spp.	1
	RED OAK BORER <i>Romaleum rufulus</i>	1
DECK Total		
DECK RAIL	LEAF BEETLES , ,	1
DECK RAIL Total		
DIRT	EASTERN SUBTERRANEAN TERMITE <i>Reticulitermes flavipes</i> (Kollar)	1

DIRT Total		1
DOG	AMERICAN DOG TICK <i>Dermacentor variabilis</i> (Say)	1
	ORANGE ASSASSIN BUG <i>Pselliopus cinctus</i> (F.)	1
DOG Total		2
DOG BEDDING	STINK BUGS , ,	1
DOG BEDDING Total		1
DOG FOOD	LARDER BEETLE <i>Dermestes lardarius</i> L.	2
DOG FOOD Total		2
DOGWOOD	FLATID PLANTHOPPERS , ,	1
	JAPANESE BEETLE <i>Popillia japonica</i> Newman	1
	NOT AN INSECT , ,	1
	STINK BUGS , ,	1
DOGWOOD Total		4
DOOR	BLACK CARPENTER ANT <i>Camponotus pennsylvanicus</i>	1
	BOXELDER BUG <i>Leptocoris trivittatus</i> (Say)	1
	SPHECID WASPS , ,	1
	STINK BUGS , ,	1
	WOOD ROACHES <i>Parcoblatta</i> spp.	1
DOOR Total		5
DOOR, FRONT	JUNIPER WEBWORM <i>Dichomeris marginella</i> (Fabricius)	1
DOOR, FRONT Total		1
DOUGLAS-FIR	NOT AN INSECT , ,	1
DOUGLAS-FIR Total		1
DRIVEWAY	CRANE FLIES , ,	1
	MUD-DAUBER WASPS , ,	1
	NO INSECTS FOUND , ,	1
	TRAPDOOR SPIDERS , ,	1
DRIVEWAY Total		4
EAVES	CICADA KILLER <i>Sphecius speciosus</i> (Drury)	1
EAVES Total		1
ECHINACEA	FLATID PLANTHOPPERS , ,	1
ECHINACEA Total		1
EGGPLANT	APHIDS , ,	1
	LADY BEETLES , ,	1
	SHARPSHOOTER <i>Oncometopia nigricans</i> L.	1
	TWOSPOTTED SPIDER MITE <i>Tetranychus urticae</i> Koch	2
EGGPLANT Total		5
ELM	WEBWORMS , ,	1
ELM Total		1
ELM	WASPS , ,	1
ELM Total		1
EUONYMOUS	SOUTHERN RED MITE <i>Oligonychus ilicis</i> (McGregor)	1
EUONYMOUS Total		1
EUONYMUS	EUONYMUS LEAF NOTCHER <i>Pryeria sinica</i>	1
	EUONYMUS SCALE <i>Unaspis euonymi</i> (Comstock)	2
EUONYMUS Total		3
EXTERIOR	GRASS MIDGES , ,	1
EXTERIOR Total		1

FERN, RABBITFOOT	HEMISPHERICAL SCALE <i>Saissetia coffeae</i> (Walker)	1
FERN, RABBITFOOT Total		1
FESCUE	SUGARCANE BEETLE <i>Eutheola rugiceps</i>	1
FESCUE Total		1
FIG	BROWN MARMORATED STINK BUG <i>Halyomorpha halys</i> (Ståhl)	1
FIG Total		1
FIR, CANAAN	SPRUCE MITE <i>Oligonychus ununguis</i> (Jacobi)	1
FIR, CANAAN Total		1
FIR, FRASER	BALSAM WOOLLY ADELGID <i>Adelges piceae</i> (Ratseburg)	1
	NO INSECTS FOUND , ,	1
	SPRUCE MITE <i>Oligonychus ununguis</i> (Jacobi)	1
FIR, FRASER Total		3
FIREWOOD	PAINTED HICKORY BORER <i>Megacyllene caryae</i> (Gahan)	1
	REDHEADED ASH BORER <i>Neoclytus acuminatus</i> (Fabricius)	1
FIREWOOD Total		2
FLOOR	NOT AN INSECT , ,	1
FLOOR Total		1
FLOORING	ANOBIID POWDERPOST BEETLES , ,	1
	BAMBOO POWDERPOST BEETLE <i>Dinoderus minutus</i> (Fabricius)	2
	BORERS , ,	1
	CAMPONOTUS DISCOLOR <i>Camponotus discolor</i>	1
	FALSE POWDERPOST BEETLES , ,	1
	FOREIGN GRAIN BEETLE <i>Ahasverus advena</i> (Waltl)	1
	INDIANMEAL MOTH <i>Plodia interpunctella</i> (Hubner)	1
	LYCTUS BEETLES <i>Lyctus</i> spp.	1
	MILLIPEDES , ,	1
	NARROWNECKED GRAIN BEETLE <i>Anthicus floralis</i>	1
	NOT AN INSECT , ,	1
	PINHOLE BORERS <i>Platypus</i> spp.	2
	POWDERPOST BEETLES , ,	11
	ROUNDHEADED BORERS , ,	4
	SOUTHERN LYCTUS <i>Lyctus planicollis</i> LeConte	2
	SUBTERRANEAN TERMITES <i>Reticulitermes</i> spp.	1
	THREADWAISTED WASPS , ,	1
	VARIED CARPET BEETLES , ,	1
FLOORING Total		34
FLOORING	SOUTHERN LYCTUS <i>Lyctus planicollis</i> LeConte	1
FLOORING Total		1
FLOORING, BAMBOO	BAMBOO POWDERPOST BEETLE <i>Dinoderus minutus</i> (Fabricius)	1
	MINTHEA RUGICOLLIS <i>Minthea rugicollis</i> (Walker, 1858)	1
	POWDERPOST BEETLES , ,	2
FLOORING, BAMBOO Total		4
FLOORING, MOCHA OAK	POWDERPOST BEETLES , ,	1
FLOORING, MOCHA OAK Total		1
FLOORING, OAK	POWDERPOST BEETLES , ,	1
FLOORING, OAK Total		1
FLOORING, SANTOS MAHOGANY	ROUNDHEADED BORERS , ,	1
FLOORING, SANTOS MAHOGANY Total		1

FLOORING, WOOD	POWDERPOST BEETLES , ,	1
FLOORING, WOOD Total		1
FLOORING, BAMBOO	POWDER-POST BEETLES , ,	1
FLOORING, BAMBOO Total		1
FLORIDA ROOM	EASTERN SUBTERRANEAN TERMITE <i>Reticulitermes flavipes</i> (Kollar)	1
FLORIDA ROOM Total		1
FLOWER BED	STINK BUGS , ,	1
FLOWER BED Total		1
FLOWERS	HUMMINGBIRD MOTH <i>Hemaris thysbe</i> (Fabricius)	1
	PHYMATA AMBUSH BUGS <i>Phymata</i> ,	1
	TOBACCO BUDWORM <i>Heliocoverpa virescens</i> (Fabricius)	1
FLOWERS Total		3
FLOWERS, CUT	BLACK AND RED STINK BUG <i>Cosmopepla bimaculata</i>	1
FLOWERS, CUT Total		1
FOOD PREP AREA	HUMPBACKED FLIES , ,	1
FOOD PREP AREA Total		1
FOOD PROCESSING FACILITY	RAISIN MOTH <i>Cadra figulilella</i>	1
FOOD PROCESSING FACILITY Total		1
FOTHERGILLA	ANELAPHUS TWIG PRUNER <i>Anelaphus</i> sp.	1
FOTHERGILLA Total		1
FRINGE TREE	PYRALID CATERPILLARS , ,	1
FRINGE TREE Total		1
FRINGE, NATIVE	FRINGETREE LACE BUG <i>Leptophya mutica</i>	1
FRINGE, NATIVE Total		1
FT. BELVOIR	BLACK AND YELLOW MUD DAUBER <i>Sceliphron caementarium</i>	1
FT. BELVOIR Total		1
FUNGI	GRAIN MITE <i>Acarus siro</i> Linnaeus	1
FUNGI Total		1
GARAGE	JUNE BEETLES , ,	1
	MAY BEETLES <i>Phyllophaga</i> spp.	1
	SUGARCANE BEETLE <i>Euethola rugiceps</i>	1
GARAGE Total		3
GARAGE FLOOR	RICE WEEVIL <i>Sitophilus oryzae</i> (Linnaeus)	1
GARAGE FLOOR Total		1
GARDEN	HUMMINGBIRD MOTH <i>Hemaris thysbe</i> (Fabricius)	1
	NOT AN INSECT , ,	1
	TIGER SWALLOWTAIL <i>Papilio glaucus</i> Linnaeus	1
GARDEN Total		3
GARLIC	INDIANMEAL MOTH <i>Plodia interpunctella</i> (Hubner)	1
GARLIC Total		1
GOGI BERRY	GALL MITES , ,	1
GOGI BERRY Total		1
GOJI BERRY	APHIDS , ,	1
	THRIPS , ,	1
GOJI BERRY Total		2
GOLF COURSE	LASIOUS ANTS <i>Lasius</i> spp.	1
GOLF COURSE Total		1
GOOSEBERRY	SAWFLIES , ,	1

GOOSEBERRY Total		1
GOVERNMENT CENTER	HUNTING SPIDERS , ,	1
GOVERNMENT CENTER Total		1
GRAPE	GRAPE FLEA BEETLE <i>Altica chalybea</i> (Illiger)	1
	GRAPE LEAF AND TENDRIL GALLS <i>Janetiella</i> spp	1
	GRAPE TUBE GALL <i>Cecidomyia viticola</i> O.S.	1
	GRAPELEAF SKELETONIZER <i>Harrisina americana</i> (Guerin)	1
	THRIPS , ,	1
GRAPE Total		5
GRAPE LEAVES	BROAD MITE <i>Polyphagotarsonemus latus</i> (Banks)	1
GRAPE LEAVES Total		1
GRASS	NO MITES FOUND , ,	1
GRASS Total		1
GROUND	ANDRENID BEES , ,	1
	BRONZED CUTWORM <i>Nephelodes minians</i> Guenee	1
	EASTERN TENT CATERPILLAR <i>Malacosoma americanum</i> (Fabricius)	1
GROUND Total		3
GUTTER	EASTERN HERCULES BEETLE <i>Dynastes tityus</i> (L.)	1
GUTTER Total		1
HACKBERRY	CATERPILLARS , ,	1
	HACKBERRY PSYLLIDS <i>Pachypsylla</i> spp.	1
	LECANIUM SCALES <i>Parthenolecanium</i> spp.	1
HACKBERRY Total		3
HAIR	GRASS FLIES , ,	1
	GRASS MIDGES , ,	1
	PSOCIDS , ,	1
	VARIED CARPET BEETLE <i>Anthrenus verbasci</i> (Linnaeus)	1
HAIR Total		4
HALLWAY	GERMAN COCKROACH <i>Blattella germanica</i> (Linnaeus)	1
	LYCOSA WOLF SPIDERS <i>Lycosa</i> ,	1
	PENNSYLVANIA WOODS COCKROACH <i>Parcoblatta pennsylvanica</i>	1
HALLWAY Total		3
HARDWOOD TREE	CARPENTERWORM <i>Prionoxystus robiniae</i> (Peck)	1
HARDWOOD TREE Total		1
HAYFIELD	ALFALFA WEEVIL <i>Hypera postica</i> (Gyllenhal)	1
	CLOVER ROOT CURCULIO <i>Sitona hispidulus</i> (Fabricius)	1
HAYFIELD Total		2
HELIOPSIS	NOT AN INSECT , ,	1
HELIOPSIS Total		1
HICKORY	HICKORY LEAF STEM GALL <i>Phylloxera</i> spp.	1
	TREEHOPPERS , ,	1
HICKORY Total		2
HOLLY	CAMELLIA SCALE <i>Lepidosaphes camelliae</i> Hoke	1
	COTTONY CAMELLIA SCALE <i>Pulvinaria floccifera</i> (Westwood)	7
	LATANIA SCALE <i>Hemiberlesia lataniae</i> (Signoret)	1
	NO INSECTS FOUND , ,	1
	WEBWORMS , ,	1
HOLLY Total		11



HOLLY, JAPANESE	ASIATIC GARDEN BEETLE <i>Maladera castanea</i> (Arrow)	1
	SOUTHERN RED MITE <i>Oligonychus ilicis</i> (McGregor)	1
	SPIDERS , ,	1
HOLLY, JAPANESE Total		3
HOLLY, SKY PENCIL	NO INSECTS FOUND , ,	1
HOLLY, SKY PENCIL Total		1
HOLLY, SOFT TOUCH	OYSTERSHELL SCALE <i>Lepidosaphes ulmi</i> (Linnaeus)	1
HOLLY, SOFT TOUCH Total		1
HOME	DOBSONFLY <i>Corydalus cornutus</i> (Linnaeus)	1
	DRUGSTORE BEETLE <i>Stegobium paniceum</i> (Linnaeus)	1
	LESSER MEALWORM <i>Alphitobius diaperinus</i> (Panzer)	1
	VARIED CARPET BEETLE <i>Anthrenus verbasci</i> (Linnaeus)	1
HOME Total		4
HONEYBEES	EUROPEAN HORNET <i>Vespa crabro germana</i> Christ	1
HONEYBEES Total		1
HOTEL	ASIATIC GARDEN BEETLE <i>Maladera castanea</i> (Arrow)	1
	HARPALUS PENNSYLVANICUS <i>Harpalus pennsylvanicus</i>	1
HOTEL Total		2
HOUSE	ANDRENID BEES , ,	1
	ANTS , ,	1
	BAT BUG <i>Cimex adjunctus</i>	1
	BED BUG <i>Cimex lectularius</i> Linnaeus	3
	BIRD MITES , ,	1
	BLACK CARPENTER ANT <i>Camponotus pennsylvanicus</i>	2
	BLACK CARPET BEETLE <i>Attagenus megatoma</i> (Fabricius)	2
	BOXELDER BUG <i>Leptocoris trivittatus</i> (Say)	1
	BROWN MARMORATED STINK BUG <i>Halyomorpha halys</i> (Ståhl)	3
	BROWNBANDED COCKROACH <i>Supella longipalpa</i> (Fabricius)	1
	CARPET BEETLES , ,	1
	CLOVER MITE <i>Bryobia praetiosa</i> Koch	1
	COMBFOOTED SPIDERS , ,	2
	DOBSONFLY <i>Corydalus cornutus</i> (Linnaeus)	1
	DRUGSTORE BEETLE <i>Stegobium paniceum</i> (Linnaeus)	4
	EASTERN SUBTERRANEAN TERMITE <i>Reticulitermes flavipes</i> (Kollar)	2
	EUROPEAN HORNET <i>Vespa crabro germana</i> Christ	1
	FISHING SPIDER <i>Dolomedes tenebrosus</i>	2
	FISHING SPIDERS , ,	1
	FUNNEL WEAVERS , ,	1
	GARDEN MILLIPEDE <i>Oxidus gracilis</i>	2
	GERMAN COCKROACH <i>Blattella germanica</i> (Linnaeus)	2
	GIANT RESIN BEE <i>Megachile sculptularis</i> Smith	1
	GRASS CARRIER WASP <i>Isodontia mexicana</i> (Saussure)	1
	HARPALUS PENNSYLVANICUS <i>Harpalus pennsylvanicus</i>	1
	HOUSE SPIDERS , ,	2
	HUMPBACKED FLIES , ,	1
	HUMPBACKED FLY	1
	HUNTING SPIDERS , ,	2
	INDIANMEAL MOTH <i>Plodia interpunctella</i> (Hubner)	1
	INSECTS , ,	1

	ISOTOMID SPRINGTAILS , ,	3
	LARDER BEETLE <i>Dermestes lardarius</i> L.	1
	LEAFHOPPERS , ,	1
	LESSER MEALWORM <i>Alphitobius diaperinus</i> (Panzer)	1
	LONG-BODIED CELLAR SPIDERS <i>Pholcus</i> spp.	1
	LYCOSA WOLF SPIDERS <i>Lycosa</i> ,	2
	MARbled ORB WEAVERS <i>Araneus</i> sp.	1
	MARCH FLIES , ,	1
	MOTHS , ,	1
	NO INSECTS FOUND , ,	4
	NOCTUID PUPA , ,	1
	NOT AN INSECT , ,	1
	PSOCIDS , ,	1
	RHINONCUS PYRRHOPUS <i>Rhinoncus pyrropus</i>	1
	RICE WEEVIL <i>Sitophilus oryzae</i> (Linnaeus)	1
	ROOT WEEVILS <i>Otiorhynchus</i> spp.	1
	ROVE BEETLES , ,	1
	SAP BEETLES , ,	1
	SAWTOOTHED GRAIN BEETLE <i>Oryzaephilus surinamensis</i> (Linnaeus)	2
	SEED BUGS , ,	1
	SHEETWEB WEAVER SPIDERS , ,	1
	SMALLER YELLOW ANT <i>Acanthomyops claviger</i> (Roger)	1
	SPIDER BEETLES , ,	1
	STINK BUGS , ,	1
	TREE CRICKET	1
	VALLEDA LAPPET MOTH TOLYPE VELLEDA	1
	VARIED CARPET BEETLE <i>Anthrenus verbasci</i> (Linnaeus)	5
	VELVET MITES , ,	1
	VINEGAR FLIES , ,	1
	WESTERN CONIFER SEED BUG <i>Leptoglossus occidentalis</i>	3
	WHEEL BUG <i>Arilus cristatus</i> (Linnaeus)	1
	WHITE MARGINED BURROWER BUG <i>Sehirus cinctus</i> (P.B.)	1
	WOLF SPIDERS , ,	2
HOUSE Total		94
HOUSE EXTERIOR	EASTERN SUBTERRANEAN TERMITE <i>Reticulitermes flavipes</i> (Kollar)	1
HOUSE EXTERIOR Total		1
HOUSEPLANT	SPIDER MITES , ,	1
HOUSEPLANT Total		1
HOYA?	FOREIGN GRAIN BEETLE <i>Ahasverus advena</i> (Waltl)	1
HOYA? Total		1
HUMAN	BED BUG <i>Cimex lectularius</i> Linnaeus	2
	BLACK FLIES , ,	1
	IXODES TICKS <i>Ixodes</i> spp.	3
	IXODES WOODI <i>Ixodes woodi</i>	2
	LONE STAR TICK <i>Amblyomma americanum</i> (Linnaeus)	11
	NO INSECTS FOUND , ,	8
	NOT AN INSECT , ,	4
	PHIDIPPUS AUDAX <i>Phidippus audax</i>	1
	SHINING FUNGUS BEETLES , ,	1

	STABLE FLY <i>Stomoxys calcitrans</i> (Linnaeus)	1
	TICKS , ,	1
	WHEEL BUG <i>Arilus cristatus</i> (Linnaeus)	1
HUMAN Total		36
HUMMING BIRD FEEDER	CONOTRACHELUS ELEGANS <i>Conotrachelus elegans</i>	1
HUMMING BIRD FEEDER Total		1
HUMMINGBIRD FEEDERS	HONEY BEE <i>Apis mellifera</i> L.	1
HUMMINGBIRD FEEDERS Total		1
HYDRANGEA	FOURLINED PLANT BUG <i>Poecilocapsus lineatus</i> (Fabricius)	1
	GREEN PEACH APHID <i>Myzus persicae</i> (Sulzer)	1
	REDHEADED FLEA BEETLE <i>Systema frontalis</i> (F.)	1
HYDRANGEA Total		3
INSIDE	INDIANMEAL MOTH <i>Plodia interpunctella</i> (Hubner)	1
	IVORYMARKED BEETLE <i>Eburia quadrigeminata</i> (Say)	1
INSIDE Total		2
JOE PYE WEED	NO INSECTS FOUND , ,	1
	SPIDER MITES , ,	1
JOE PYE WEED Total		2
JUNIPER	NO INSECTS FOUND , ,	1
	SPRUCE MITE <i>Oligonychus ununguis</i> (Jacobi)	7
JUNIPER Total		8
JUNIPER, BLUE POINT	ROUNDHEADED BORERS , ,	1
JUNIPER, BLUE POINT Total		1
KITCHEN	AMERICAN COCKROACH <i>Periplaneta americana</i> (Linnaeus)	1
	BLACK CARPENTER ANT <i>Camponotus pennsylvanicus</i>	1
	BROWNBANDED COCKROACH <i>Supella longipalpa</i> (Fabricius)	1
	EASTERN SUBTERRANEAN TERMITE <i>Reticulitermes flavipes</i> (Kollar)	1
	GERMAN COCKROACH <i>Blattella germanica</i> (Linnaeus)	1
	ISOTOMID SPRINGTAILS , ,	1
	LESSER MEALWORM <i>Alphitobius diaperinus</i> (Panzer)	1
	PLANT BUGS , ,	1
	PYRALID MOTHS , ,	1
	RICE WEEVIL <i>Sitophilus oryzae</i> (Linnaeus)	1
	SPRINGTAILS , ,	1
	VARIED CARPET BEETLE <i>Anthrenus verbasci</i> (Linnaeus)	1
KITCHEN Total		12
LAMP	ANTS , ,	1
LAMP Total		1
LAUNDRY ROOM	BLACK CARPET BEETLE <i>Attagenus megatoma</i> (Fabricius)	1
LAUNDRY ROOM Total		1
LAUREL	NO INSECTS FOUND , ,	1
LAUREL Total		1
LAUREL, CHERRY	INDIAN WAX SCALE <i>Ceroplastes ceriferus</i> (F.)	1
LAUREL, CHERRY Total		1
LAUREL, MOUNTAIN	CHINESE MANTID <i>Tenodera aridifolia</i> Saussure	1
LAUREL, MOUNTAIN Total		1
LAWN	ANDRENID BEES , ,	1
	DOBSONFLY <i>Corydalus cornutus</i> (Linnaeus)	1

	EARTHWORMS , ,	1
	SUGARCANE BEETLE <i>Euetheola rugiceps</i>	1
	VELVET ANTS , ,	1
LAWN Total		5
LEAF LITTER	PTEROSTICHUS COMMUTABILIS <i>Pterostichus commutabilis</i> (Motschulsky)	1
	PTEROSTICHUS TRISTIS <i>Pterostichus tristis</i>	1
LEAF LITTER Total		2
LEMON TREE	CALIFORNIA RED SCALE <i>Aonidiella aurantii</i>	1
LEMON TREE Total		1
LIGHTS	DRUGSTORE BEETLE <i>Stegobium paniceum</i> (Linnaeus)	1
	PSOCIDS , ,	1
	VARIED CARPET BEETLE <i>Anthrenus verbasci</i> (Linnaeus)	1
LIGHTS Total		3
LIGUSTRUM	WHITE PEACH SCALE <i>Pseudaulacaspis pentagona</i> (Targioni-Tozzetti)	1
LIGUSTRUM Total		1
LILAC	HARRIS'S THREE-SPOT <i>Harrisimemna trisignata</i>	1
LILAC Total		1
LIME	NO INSECTS FOUND , ,	1
LIME Total		1
LIPSTICK-PLANT	SPIDER MITES , ,	1
LIPSTICK-PLANT Total		1
LIVING ROOM	BLACK CARPENTER ANT <i>Camponotus pennsylvanicus</i>	1
	BLACK CARPET BEETLE <i>Attagenus megatoma</i> (Fabricius)	1
	CAT FLEA <i>Ctenocephalides felis</i> (Bouche)	1
	MOTH FLIES , ,	1
	NOT AN INSECT , ,	1
	PARASITIC WASPS , ,	1
	STONEFLIES , ,	2
LIVING ROOM Total		8
LIVING ROOM	BLACK CARPENTER ANT <i>Camponotus pennsylvanicus</i>	1
LIVING ROOM Total		1
LIVINGROOM	BROWN MARMORATED STINK BUG <i>Halyomorpha halys</i> (Ståhl)	1
	EASTERN SUBTERRANEAN TERMITE <i>Reticulitermes flavipes</i> (Kollar)	1
	NO INSECTS FOUND , ,	1
	WESTERN CONIFER SEED BUG <i>Leptoglossus occidentalis</i>	1
LIVINGROOM Total		4
LLAMA	HORSEHAIR WORMS , ,	1
LLAMA Total		1
LOCUST, HONEY	CALICO SCALE <i>Eulecanium cerasorum</i> (Cockerell)	1
LOCUST, HONEY Total		1
LOOSESTRIFE	FOURLINED PLANT BUG <i>Poecilocapsus lineatus</i> (Fabricius)	1
LOOSESTRIFE Total		1
LUPINE	FLOWER THRIPS <i>Frankliniella tritici</i> (Fitch)	1
	GARDEN MILLIPEDES <i>Oxidus glassulus</i>	1
LUPINE Total		2
MACADAMIA NUTS	INDIANMEAL MOTH <i>Plodia interpunctella</i> (Hubner)	1
	RED FLOUR BEETLE <i>Tribolium castaneum</i> (Herbst)	1
MACADAMIA NUTS Total		2

MAGNOLIA	NO INSECTS FOUND , ,	1
MAGNOLIA Total		1
MANDEVILLA	CITRUS MEALYBUG <i>Planococcus citri</i>	1
MANDEVILLA Total		1
MANDIVILLA	GREEN PEACH APHID <i>Myzus persicae</i> (Sulzer)	1
MANDIVILLA Total		1
MAPLE	COTTONY MAPLE LEAF SCALE <i>Pulvinaria acericola</i> (Walsh & Riley)	1
	GLOOMY SCALE <i>Melanaspis tenebricosa</i> (Comstock)	2
	GREEN LACEWINGS , ,	1
	JAPANESE BEETLE <i>Popillia japonica</i> Newman	1
	JAPANESE MAPLE SCALE <i>Lopholeucaspis japonica</i>	1
	LEAFHOPPERS , ,	2
	MAPLE BLADDER GALL <i>Vasates quadripedes</i> Shimer	1
	PERIODICAL CICADA <i>Magicicada septendecim</i> (L.)	1
	WHEEL BUG <i>Arilus cristatus</i> (Linnaeus)	1
	WOOLLY ALDER APHID <i>Paraprociophilus tessellatus</i> (Fitch)	1
MAPLE Total		12
MAPLE, JAPANESE	APHIDS , ,	1
	GLOOMY SCALE <i>Melanaspis tenebricosa</i> (Comstock)	1
	GREEN FRUITWORM <i>Lithophane antennata</i> (Walker)	1
	SOFT SCALES , ,	1
MAPLE, JAPANESE Total		4
MAPLE, RED	GLOOMY SCALE <i>Melanaspis tenebricosa</i> (Comstock)	2
	MAPLE EYESPOT GALL <i>Acericecis ocellaris</i> (Osten Sacken)	1
	NO INSECTS FOUND , ,	1
MAPLE, RED Total		4
MARIGOLD	TWOSPOTTED SPIDER MITE <i>Tetranychus urticae</i> Koch	1
MARIGOLD Total		1
MILKWEED	MONARCH BUTTERFLY <i>Danaus plexippus</i> (L.)	1
MILKWEED Total		1
MINT	FOURLINED PLANT BUG <i>Poecilocapsus lineatus</i> (Fabricius)	2
MINT Total		2
MOLDING	FLIES , ,	1
MOLDING Total		1
MONDO GRASS	LEPIDOSAPHES SCALE <i>Lepidosaphes</i> spp.	1
MONDO GRASS Total		1
MOTEL	COULD NOT DIAGNOSE , ,	1
MOTEL Total		1
MULBERRY	WHITE PEACH SCALE <i>Pseudaulacaspis pentagona</i> (Targioni-Tozzetti)	1
MULBERRY Total		1
MUSEUM	MINUTE BROWN SCAVENGER BEETLES , ,	1
	SQUARENECKED GRAIN BEETLE <i>Cathartus quadricollis</i>	1
	WHITEMARKED SPIDER BEETLE <i>Ptinus fur</i> (L.)	1
MUSEUM Total		3
NO INFORMATION	APHIDS , ,	1
	BEETLES , ,	1
	BLACK WIDOW SPIDER <i>Latrodectus mactans</i> (Fabricius)	1
	BROWN MARMORATED STINK BUG <i>Halyomorpha halys</i> (Ståhl)	1

	BUCK MOTH <i>Hemileuca maia</i> (Drury)	1
	CARPET BEETLES , ,	1
	COULD NOT DIAGNOSE , ,	1
	EARTHWORMS , ,	1
	FISHING SPIDER <i>Dolomedes tenebrosus</i>	1
	FLIES , ,	1
	JAPANESE BEETLE <i>Popillia japonica</i> Newman	1
	JUNE BEETLES , ,	1
	LADY BEETLES , ,	1
	LEAFHOPPERS , ,	1
	LOCUST LEAFMINER <i>Odontota dorsalis</i> (Thunberg)	1
	MAY BEETLES <i>Phyllophaga</i> spp.	1
	NO INSECTS FOUND , ,	1
	OIL BEETLE <i>Meloe</i> spp.	1
	PLANT BUGS , ,	2
	PLANTHOPPERS , ,	2
	SAWTOOTHED GRAIN BEETLE <i>Oryzaephilus surinamensis</i> (Linnaeus)	1
	SPIDERS , ,	1
	SQUASH BUG <i>Anasa tristis</i> (De Geer)	1
	WHEEL BUG <i>Arilus cristatus</i> (Linnaeus)	2
	WOLF SPIDERS , ,	1
NO INFORMATION Total		28
NURSERY	BARK BEETLES , ,	2
NURSERY Total		2
OAK	BARK BEETLES , ,	1
	BUCK MOTH <i>Hemileuca maia</i> (Drury)	2
	CARPENTERWORM <i>Prionoxystus robiniae</i> (Peck)	1
	FALL WEBWORM <i>Hyphantria cunea</i> (Drury)	1
	GYPSY MOTH <i>Lymantria dispar</i> (Linnaeus)	1
	OAK APPLE GALLS , ,	1
	OAK BUTTON GALL <i>Neuroterus umbilicatus</i> Bass.	4
	OAK LECANIUM SCALE <i>Parthenolecanium quercifex</i> (Fitch)	1
	OAK SKELETONIZER <i>Bucculatrix ainsliella</i> Murtfeldt	1
	OAK SPIDER MITE <i>Oligonychus bicolor</i> (Banks)	1
	POWDERPOST BEETLES , ,	1
	RED OAK BORER <i>Romaleum rufulus</i>	1
	TRUMPET SKELETONIZERS <i>Epinotia</i> spp.	1
	VARIABLE OAKLEAF CATERPILLAR <i>Heterocampa manteo</i> (Doubleday)	1
	WOOL SOWER GALL <i>Callirhytis seminator</i> Harr.	2
OAK Total		20
OAK, BLACK	INSECTS , ,	1
	OAK ERINEUM GALLS , ,	1
	YELLOWNECKED CATERPILLAR <i>Datana ministra</i> (Drury)	1
OAK, BLACK Total		3
OAK, BLACKJACK	TREEHOPPERS , ,	1
OAK, BLACKJACK Total		1
OAK, PIN	ORANGESTRIPED OAKWORM <i>Anisota senatoria</i> (J. E. Smith)	2
	VEIN POCKET GALL <i>Macrodiplosis erubescens</i> (O.S.)	2
OAK, PIN Total		4

OAK, RED	FLATHEADED APPLETREE BORER <i>Chrysobothris femorata</i> (Olivier)	1
	FLATHEADED BORERS , ,	1
	GOUTY OAK GALL <i>Callirhytis punctata</i> (O.S.)	1
OAK, RED Total		3
OAK, SHINGLE	SPIDER MITES , ,	1
OAK, SHINGLE Total		1
OAK, WHITE	LIGHTNING BEETLES , ,	1
	ROUNDHEADED BORERS , ,	1
OAK, WHITE Total		2
OAK, WILLOW	BROWN FRUIT CHAFER <i>Euphoria inda</i> (Linnaeus)	1
	GYPSY MOTH <i>Lymantria dispar</i> (Linnaeus)	1
	OAK LECANIUM SCALE <i>Parthenolecanium quercifex</i> (Fitch)	3
	OAK SPIDER MITE <i>Oligonychus bicolor</i> (Banks)	1
OAK, WILLOW Total		6
OAK, WILLOW	ANTHRIBUS NEBULOSUS <i>Anthribus nebulosus</i>	1
OAK, WILLOW Total		1
OAK/PINE	NO INSECTS FOUND , ,	1
OAK/PINE Total		1
OFFICE	HAMMATOCERUS PURCIS <i>Hammatocerus purcis</i> (Drury)	1
	LYCOSA WOLF SPIDERS <i>Lycosa</i> ,	1
	SPHECID WASPS , ,	1
	SPIDERS , ,	1
OFFICE Total		4
ONION	ONION APHID <i>Neotoxoptera formosana</i> (Takahashi)	1
	ONION THRIPS <i>Thrips tabaci</i> Lindeman	1
ONION Total		2
ORCHARDGRASS	YELLOW SUGARCANE APHID <i>Sipha flava</i> (Forbes)	1
ORCHARDGRASS Total		1
OREGANO	FLOWER THRIPS <i>Frankliniella tritici</i> (Fitch)	1
OREGANO Total		1
OUTDOOR LIGHT	ODOROUS HOUSE ANT <i>Tapinoma sessile</i> (Say)	1
OUTDOOR LIGHT Total		1
OUTSIDE	ASIAN TIGER MOSQUITO <i>Aedes albopictus</i>	1
	ASIATIC GARDEN BEETLE <i>Maladera castanea</i> (Arrow)	1
	BLACKJACKET <i>Vespula consobrina</i>	1
	BROADNECKED ROOT BORER <i>Prionus laticollis</i> (Drury)	1
	BROWN PRIONID <i>Orthosoma brunneum</i> (Forster)	1
	CATALPA SPHINX <i>Ceratomia catalpae</i> (Boisduval)	1
	CATERPILLARS , ,	1
	CICADA KILLER <i>Sphecius speciosus</i> (Drury)	2
	EASTERN SUBTERRANEAN TERMITE <i>Reticulitermes flavipes</i> (Kollar)	1
	EASTERN YELLOWJACKET <i>Vespula maculifrons</i> (Buysson)	1
	ELLESCHUS EPHIPPIATUS <i>Elleschus ehippiatus</i>	1
	EUROPEAN HORNET <i>Vespa crabro germana</i> Christ	1
	FLAT BARK BEETLES , ,	1
	FUNNEL WEAVERS , ,	1
	GERMAN YELLOWJACKET <i>Vespula germanica</i> (F.)	1
	GROUND BEETLES <i>Galeritula</i> ,	1

	HARPALUS PENNSYLVANICUS <i>Harpalus pennsylvanicus</i>	1
	HORNWORMS	1
	HORSEHAIR WORMS , ,	1
	KATYDIDS , ,	1
	LEAFROLLING WEEVILS , ,	1
	LEOPARD MOTH <i>Zeuzera pyrina</i> (Linnaeus)	1
	MARCH FLIES , ,	1
	MIDGES , ,	1
	MULTICOLORED ASIAN LADY BEETLE <i>Harmonia axyridis</i>	1
	NET-WINGED BEETLE <i>Calopteron discrepans</i>	1
	ORB WEAVERS , ,	1
	PINE SAWYERS <i>Monochamus</i> spp.	1
	PLUME MOTHS , ,	1
	RAINBOW SCARAB <i>Phanaeus vindex</i>	1
	SAWFLIES , ,	1
	SMALLER YELLOW ANT <i>Acanthomyops claviger</i> (Roger)	1
	SPHINX MOTHS , ,	1
	TIGER SWALLOWTAIL <i>Papilio glaucus</i> Linnaeus	3
	WHEEL BUG <i>Arilus cristatus</i> (Linnaeus)	3
	WHITETAIL DRAGONFLY <i>Libellula lydia</i>	1
	YELLOW WOOLLYBEAR <i>Spilosoma virginica</i> (Fabricius)	1
OUTSIDE Total		42
OUTSIDE LIGHT	ANTS , ,	1
OUTSIDE LIGHT Total		1
PANTRY	INDIANMEAL MOTH <i>Plodia interpunctella</i> (Hubner)	1
	SAWTOOTHED GRAIN BEETLE <i>Oryzaephilus surinamensis</i> (Linnaeus)	1
PANTRY Total		2
PARKING LOT	LONE STAR TICK <i>Amblyomma americanum</i> (Linnaeus)	2
PARKING LOT Total		2
PATIO	GARDEN MILLIPEDE <i>Oxidus gracilis</i>	1
	MARBLED ORB WEAVERS <i>Araneus</i> sp.	1
PATIO Total		2
PAWPAW	PYRALID CATERpillars , ,	1
PAWPAW Total		1
PEA	BROAD HEADED BUG , ,	1
PEA Total		1
PEACH	DARKWINGED FUNGUS GNATS , ,	1
	LEAFFOOTED BUG <i>Leptoglossus phyllopus</i> (L.)	1
	NO INSECTS FOUND , ,	1
	ORIENTAL FRUIT MOTH <i>Grapholita molesta</i> (Busck)	1
	PLUM CURCULIO <i>Conotrachelus nenuphar</i> (Herbst)	2
	SAP BEETLES , ,	1
	STINK BUGS , ,	2
PEACH Total		9
PEANUTS	ANTLIKE FLOWER BEETLES , ,	1
	DRUGSTORE BEETLE <i>Stegobium paniceum</i> (Linnaeus)	1
	LESSER MEALWORM <i>Alphitobius diaperinus</i> (Panzer)	1
	SAP BEETLES , ,	1
PEANUTS Total		4



PEAR	PLUM CURCULIO <i>Conotrachelus nenuphar</i> (Herbst)	1
PEAR Total		1
PECAN	HICKORY SHUCKWORM <i>Laspeyresia caryana</i> (Fitch) INDIANMEAL MOTH <i>Plodia interpunctella</i> (Hubner) PECAN SPITTLEBUG <i>Clastoptera achatina</i> Germar STINK BUGS , ,	1 1 1 1
PECAN Total		4
PEPPER	EARTHWORMS , , FLOWER THRIPS <i>Frankliniella tritici</i> (Fitch) STINK BUG	1 2 1
PEPPER Total		4
PERSIMMON	PERSIMMON PSYLLA <i>Trioza diospyri</i> (Ashmead)	1
PERSIMMON Total		1
PHLOX	INSECTS , ,	1
PHLOX Total		1
PINE	BARK BEETLES , , IMPERIAL MOTH <i>Eacles imperialis</i> (Drury) NO INSECTS FOUND , , PINE BARK ADELGID <i>Pineus strobi</i> (Hartig) PINE SAWYERS <i>Monochamus</i> spp. WHITESPOTTED SAWYER <i>Monochamus scutellatus</i>	1 1 1 1 2 1
PINE Total		7
PINE LOGS	COSSONUS BARK WEEVILS <i>Cossonus</i> sp. IPS ENGRAVER BEETLES <i>Ips</i> spp.	1 1
PINE LOGS Total		2
PINE PANELING	BLACK CARPENTER ANT <i>Camponotus pennsylvanicus</i>	1
PINE PANELING Total		1
PINE, 2-NEEDLE	PINE BARK ADELGID <i>Pineus strobi</i> (Hartig)	1
PINE, 2-NEEDLE Total		1
PINE, LOBLOLLY	BARK BEETLES , , GROUND BEETLES , , PINE SAWYERS <i>Monochamus</i> spp.	1 1 2
PINE, LOBLOLLY Total		4
PINE, MUGO	PINE NEEDLE SCALE <i>Chionaspis pinifoliae</i> (Fitch)	1
PINE, MUGO Total		1
PINE, SCOTCH	PINE SAWYERS <i>Monochamus</i> spp.	1
PINE, SCOTCH Total		1
PINE, SHORT LEAF	PINE SAWYERS <i>Monochamus</i> spp.	1
PINE, SHORT LEAF Total		1
PINE, VIRGINIA	BLACKHEADED PINE SAWFLY <i>Neodiprion excitans</i> Rohwer	1
PINE, VIRGINIA Total		1
PINE, WHITE	FLATHEADED APPLETREE BORER <i>Chrysobothris femorata</i> (Olivier) NEEDLE SHEATH MITES , , NO INSECTS FOUND , , PALES WEEVIL <i>Hylobius pales</i> (Herbst) PINE BARK ADELGID <i>Pineus strobi</i> (Hartig) PITYOGENES BARK BEETLES <i>Pityogenes</i> spp. WHITE PINE WEEVIL <i>Pissodes strobi</i> (Peck)	1 1 1 1 5 1 3

PINE, WHITE Total		13
PLANTS	EASTERN SUBTERRANEAN TERMITE <i>Reticulitermes flavipes</i> (Kollar)	1
PLANTS Total		1
PLANTS, POTTED	BLACK WIDOW SPIDER <i>Latrodectus mactans</i> (Fabricius)	1
	BROWN WIDOW SPIDER <i>Latrodectus geometricus</i>	1
	NORTHERN WIDOW <i>Latrodectus variolus</i> (Walckenaer)	1
	WIDOW SPIDERS <i>Latrodectus</i> sp.	1
PLANTS, POTTED Total		4
PLAYROOM	REDSPOTTED ANTMIMIC <i>Castianeira descripta</i>	1
PLAYROOM Total		1
PLUM	EASTERN TENT CATERPILLAR <i>Malacosoma americanum</i> (Fabricius)	1
	JAPANESE BEETLE <i>Popillia japonica</i> Newman	1
	PLUM CURCULIO <i>Conotrachelus nenuphar</i> (Herbst)	1
	TARNISHED PLANT BUG <i>Lygus lineolaris</i> (Palisot de Beauvois)	1
PLUM Total		4
PLUM, FLOWERING	VARIABLE OAKLEAF CATERPILLAR <i>Heterocampa manteo</i> (Doubleday)	1
PLUM, FLOWERING Total		1
POINSETTIA	DARKWINGED FUNGUS GNATS , ,	1
	SILVERLEAF WHITEFLY <i>Bemisia tabaci</i>	1
POINSETTIA Total		2
POOL, SWIMMING	BACKSWIMMERS , ,	1
	HORSEHAIR WORMS , ,	1
	MIDGES , ,	1
POOL, SWIMMING Total		3
POPLAR	ALLEGHENY MOUND ANT <i>Formica exsectoides</i> Forel	1
	MOTH PUPA , ,	1
POPLAR Total		2
POPLAR, TULIP	BORERS , ,	1
POPLAR, TULIP Total		1
POPULAR	BARK BEETLES , ,	1
POPULAR Total		1
PORCH	CICADA KILLER <i>Sphecius speciosus</i> (Drury)	1
	GIANT RESIN BEE <i>Megachile sculptularis</i> Smith	1
	MOTH FLIES , ,	1
	POLYPHEMUS MOTH <i>Antheraea polyphemus</i> (Cramer)	1
	RED CARPENTER ANT <i>Camponotus ferrugineus</i> (Fabricius)	1
PORCH Total		5
POTATO	COLORADO POTATO BEETLE <i>Leptinotarsa decemlineata</i> (Say)	1
	MARGINED BLISTER BEETLE <i>Epicauta pestifera</i> Werner	1
	NO MITES FOUND , ,	1
	POTATO LEAFHOPPER <i>Empoasca fabae</i> (Harris)	1
POTATO Total		4
POTTING SOIL	GARDEN MILLIPEDE <i>Oxidus gracilis</i>	1
POTTING SOIL Total		1
POULTRY	SOLDIER FLIES , ,	1
POULTRY Total		1
PUMPKIN	PINK AND BLACK LADY BEETLE <i>Coleomagila maculata</i> L.	1
PUMPKIN Total		1

PYRACANTHA	CALICO SCALE <i>Eulecanium cerasorum</i> (Cockerell)	1
	HAWTHORN LACE BUG <i>Corythucha cydoniae</i> (Fitch)	1
PYRACANTHA Total		2
RASPBERRY	BLACKBERRY PSYLLID <i>Trioza tripunctata</i> Fitch	1
RASPBERRY Total		1
RASPBERRY, RED	TWOSPOTTED SPIDER MITE <i>Tetranychus urticae</i> Koch	1
RASPBERRY, RED Total		1
REDBUD	BARK BEETLES , ,	1
	HACKBERRY LEAFSLUG <i>Norape cretata</i> Grt.	1
	ICHNEUMONID WASPS , ,	1
	RUST MITES , ,	1
	SPIDERS , ,	1
REDBUD Total		5
REDBUD, EASTERN	RUST MITES , ,	1
REDBUD, EASTERN Total		1
RHODODENDRON	AZALEA LACE BUG <i>Stephanitis pyrioides</i> (Scott)	2
	BARK BEETLES , ,	1
	COULD NOT DIAGNOSE , ,	1
	EASTERN SUBTERRANEAN TERMITE <i>Reticulitermes flavipes</i> (Kollar)	1
	ERIOPHYID MITES , ,	1
	FLATID PLANTHOPPERS , ,	1
	NOT AN INSECT , ,	1
	RHODODENDRON BORER <i>Synanthedon rhododendri</i> Beutenmuller	1
	YELLOWNECKED CATERPILLAR <i>Datana ministra</i> (Drury)	1
RHODODENDRON Total		10
RICE	SAWTOOTHED GRAIN BEETLE <i>Oryzaephilus surinamensis</i> (Linnaeus)	1
RICE Total		1
RIVER	MAYFLIES , ,	1
RIVER Total		1
ROAD	DARKWINGED FUNGUS GNATS , ,	1
ROAD Total		1
ROADSIDE	BARK BEETLES , ,	1
ROADSIDE Total		1
ROOF	BEETLES , ,	1
ROOF Total		1
ROSE	ROSE STEM SAWFLY <i>Hartigia trimaculata</i> Say	1
	TWOSPOTTED SPIDER MITE <i>Tetranychus urticae</i> Koch	3
ROSE Total		4
ROSEMARY	DARKWINGED FUNGUS GNATS , ,	1
ROSEMARY Total		1
ROSES	APHID PARASITE , ,	1
	APHIDS , ,	1
	JAPANESE BEETLE <i>Popillia japonica</i> Newman	1
	ROESLUG <i>Endelomyia aethiops</i> (Fabricius)	1
ROSES Total		4
SAGE	FLOWER THRIPS <i>Frankliniella tritici</i> (Fitch)	1
SAGE Total		1
SALVIA	PARASITIC WASPS , ,	1

SALVIA Total		1
SARCOCCOCCA	RUST MITES , ,	1
SARCOCCOCCA Total		1
SCHEFFLERA	THRIPS , ,	1
SCHEFFLERA Total		1
SCREEN DOOR	BLINDED SPHINX <i>Paonias excaecatus</i>	1
SCREEN DOOR Total		1
SERVICEBERRY	APHIDS , ,	1
SERVICEBERRY Total		1
SHED	BLACK CARPENTER ANT <i>Camponotus pennsylvanicus</i>	1
SHED Total		1
SHRUB	INDIAN WAX SCALE <i>Ceroplastes ceriferus</i> (F.)	1
	NO INSECTS FOUND , ,	1
SHRUB Total		2
SHRUBBERY	SAWFLIES , ,	1
SHRUBBERY Total		1
SIDE OF HOUSE	ISOTOMID SPRINGTAILS , ,	1
SIDE OF HOUSE Total		1
SINK	ODOROUS HOUSE ANT <i>Tapinoma sessile</i> (Say)	1
SINK Total		1
SOFA	BEE TL ES , ,	1
	PSOCIDS , ,	1
SOFA Total		2
SOIL	ALLEGHENY MOUND ANT <i>Formica exsectoides</i> Forel	1
	ANDRENID BEES , ,	1
	CICADA KILLER <i>Sphecius speciosus</i> (Drury)	1
	HORSE FLIES , ,	1
	MARCH FLIES , ,	1
	SOLDIER BEETLES , ,	1
SOIL Total		6
SOURWOOD	OBBEREA STEM BORERS <i>Oberea</i> sp.	1
SOURWOOD Total		1
SPIDER PLANT	ISCHNODEMUS FALICUS <i>Ischnodemus falicus</i> Say	1
SPIDER PLANT Total		1
SPRUCE	POTTER WASPS , ,	1
	VELVET ANT <i>Dasymutilla occidentalis</i> (L.)	1
SPRUCE Total		2
SPRUCE, ALBERTA	RUST MITES , ,	1
SPRUCE, ALBERTA Total		1
SPRUCE, BLUE	LONGHORNED BEETLES , ,	1
	NO MITES FOUND , ,	1
	SPRUCE MITE <i>Oligonychus ununguis</i> (Jacobi)	2
	WHITE PINE WEEVIL <i>Pissodes strobi</i> (Peck)	1
SPRUCE, BLUE Total		5
SPRUCE, BLUE GLOBE	PESTICIDE BURN , ,	1
SPRUCE, BLUE GLOBE Total		1
SPRUCE, NORWAY	NO INSECTS FOUND , ,	2
	ROUNDHEADED BORERS , ,	1

	SPRUCE MITE <i>Oligonychus ununguis</i> (Jacobi)	2
SPRUCE, NORWAY Total		5
SQUASH	SQUASH BUG <i>Anasa tristis</i> (De Geer)	2
	SQUASH VINE BORER <i>Melittia cucurbitae</i> (Harris)	1
SQUASH Total		3
SQUASH, STRAIGHT-NECK	CUCUMBER BEETLES , ,	1
SQUASH, STRAIGHT-NECK Total		1
STORAGE BUILDING	CARPENTER BEE <i>Xylocopa virginica</i> (Linnaeus)	1
STORAGE BUILDING Total		1
STORAGE ROOM	BLACK CARPENTER ANT <i>Camponotus pennsylvanicus</i>	1
STORAGE ROOM Total		1
STORE	GROUND BEETLES , ,	1
STORE Total		1
STORED PRODUCTS	INDIAN MEAL MOTH <i>Pyralis farinalis</i> Linnaeus	1
STORED PRODUCTS Total		1
STRAWBERRY	ARMYWORM <i>Pseudaletia unipuncta</i> (Haworth)	2
	BLACK CUTWORM <i>Agrotis ipsilon</i> (Hufnagel)	1
	NO INSECTS FOUND , ,	1
	STRAWBERRY CROWNMINER <i>Aristotelia fragariae</i> Busck	1
	STRAWBERRY ROOTWORM <i>Paria fragariae</i> Wilcox	2
	WEEVILS , ,	1
STRAWBERRY Total		8
SUGAR	INDIANMEAL MOTH <i>Plodia interpunctella</i> (Hubner)	1
SUGAR Total		1
SUNDROP	CATERPILLARS , ,	1
SUNDROP Total		1
SUNFLOWER	SUNFLOWER MOTH <i>Homoeosoma electellum</i> (Hulst)	1
SUNFLOWER Total		1
SWEET BAY	BROWN SOFT SCALE <i>Coccus hesperidum</i> Linnaeus	1
SWEET BAY Total		1
SYCAMORE	LECANIUM SCALES <i>Parthenolecanium</i> spp.	1
SYCAMORE Total		1
TENT	HOUSE CENTIPEDE <i>Scutigera coleoptrata</i> (Linnaeus)	1
TENT Total		1
THIRD FLOOR	ANTHOCOMUS EQUESTRIS <i>Anthocomus equestris</i>	1
THIRD FLOOR Total		1
TOAD LILY	FLATID PLANTHOPPERS , ,	1
TOAD LILY Total		1
TOBACCO	CORN EARWORM <i>Heliocoverpa zea</i> (Boddie)	1
TOBACCO Total		1
TOMATO	ALLEGHENY MOUND ANT <i>Formica exsectoides</i> Forel	1
	APHIDS , ,	2
	BROWN MARMORATED STINK BUG <i>Halyomorpha halys</i> (Stähl)	1
	FLOWER THRIPS <i>Frankliniella tritici</i> (Fitch)	3
	HICKORY HORNED DEVIL <i>Citheronia regalis</i> (Fabricius)	1
	LEAFFOOTED BUG <i>Leptoglossus phyllopus</i> (L.)	1
	MAGGOTS , ,	1
	MARGINED BLISTER BEETLE <i>Epicauta pestifera</i> Werner	1

	NO INSECTS FOUND , ,	1
	POTATO APHID <i>Macrosiphum euphorbiae</i> (Thomas)	1
	ROOT MAGGOTS , ,	1
	SILVERSPOTTED SKIPPER <i>Epargyreus clarus</i> (Cramer)	1
	STINK BUGS , ,	5
	TEXTULA SKIFF CATERPILLAR <i>Isa textula</i>	2
	THRIPS , ,	1
	TOMATO PINWORM <i>Keiferia lycopersicella</i> (Walsingham)	3
	TWOSPOTTED SPIDER MITE <i>Tetranychus urticae</i> Koch	2
TOMATO Total		28
TOWNHOUSE	EUROPEAN HORNET <i>Vespa crabro germana</i> Christ	1
TOWNHOUSE Total		1
TRAIL MIX	INDIANMEAL MOTH <i>Plodia interpunctella</i> (Hubner)	1
TRAIL MIX Total		1
TRAP	BROWN MARMORATED STINK BUG <i>Halyomorpha halys</i> (Ståhl)	1
TRAP Total		1
TRAP, EAB	BRONZE BIRCH BORER <i>Agrilus anxius</i> Gory	1
	BUPRESTID BEETLES , ,	25
TRAP, EAB Total		26
TRAP, LBAM	MOTHS , ,	11
	TORTRICID MOTHS , ,	3
TRAP, LBAM Total		14
TRAP, LBAM	MOTHS , ,	2
TRAP, LBAM Total		2
TRAP, PSB	BARK BEETLES , ,	6
	PINE SHOOT BEETLE <i>Tomicus piniperda</i>	1
TRAP, PSB Total		7
TREE	REDHEADED ASH BORER <i>Neoclytus acuminatus</i> (Fabricius)	1
	RED-SHOULDERED BUG <i>Jadera haematoloma</i> (H.S.)	1
TREE Total		2
TREE, CHRISTMAS	CRYPTOMERIA SCALE <i>Aspidiotus cryptomeriae</i> Kuwana	1
TREE, CHRISTMAS Total		1
TURNIP	DIAMONDBACK MOTH <i>Plutella xylostella</i> (Linnaeus)	1
	FLOWER THRIPS <i>Frankliniella tritici</i> (Fitch)	1
	TURNIP APHID <i>Hyadaphis erysimi</i> (Kaltenbach)	1
TURNIP Total		3
UTILITY ROOM	INDIANMEAL MOTH <i>Plodia interpunctella</i> (Hubner)	1
	ISOTOMID SPRINGTAILS , ,	1
UTILITY ROOM Total		2
VENTS	MOTH FLIES , ,	1
	VARIED CARPET BEETLE <i>Anthrenus verbasci</i> (Linnaeus)	1
VENTS Total		2
VIBURNUM	SNOWBALL APHID <i>Neoceruraphis viburnicola</i>	2
VIBURNUM Total		2
VIBURNUM, CHINDO	FLATID PLANTHOPPERS , ,	1
VIBURNUM, CHINDO Total		1
WALLS	PAVEMENT ANT <i>Tetramorium caespitum</i> (Linnaeus)	1
WALLS Total		1

WALNUT	FLATHEADED APPLETREE BORER <i>Chrysobothris femorata</i> (Olivier)	1
	NO INSECTS FOUND , ,	1
	WALNUT CATERPILLAR <i>Datana integerrima</i> Grote & Robinson	1
WALNUT Total		3
WATER	DRAGONFLIES , ,	1
WATER Total		1
WATER DISH	HORSEHAIR WORMS , ,	1
WATER DISH Total		1
WATERMELON	FLOWER THRIPS <i>Frankliniella tritici</i> (Fitch)	1
	LEAFFOOTED BUGS , ,	1
	TWOSPOTTED SPIDER MITE <i>Tetranychus urticae</i> Koch	2
WATERMELON Total		4
WILLOW	APHIDS , ,	1
	IMPORTED WILLOW LEAF BEETLE <i>Plagiodera versicolora</i> (Laicharting)	2
	MOURNINGCLOAK BUTTERFLY <i>Nymphalis antiopa</i> (Linnaeus)	1
	POPLAR TENTMAKER <i>Ichthyura inclusa</i> (Hubner)	1
WILLOW Total		5
WILLOW, PUSSY	GIANT WILLOW APHID <i>Tuberolachnus salignus</i> Gmelin	1
	SOUTHERN YELLOWJACKET <i>Vespula squamosa</i> (Drury)	1
WILLOW, PUSSY Total		2
WINDOW	CLOVER MITE <i>Bryobia praetiosa</i> Koch	1
	DRUGSTORE BEETLE <i>Stegobium paniceum</i> (Linnaeus)	1
	EASTERN SUBTERRANEAN TERMITE <i>Reticulitermes flavipes</i> (Kollar)	2
	GROUND BEETLES , ,	1
	PLEASING FUNGUS BEETLES , ,	1
	SOLITARY BEES , ,	1
WINDOW Total		7
WINDOW	PAVEMENT ANT <i>Tetramorium caespitum</i> (Linnaeus)	1
WINDOW Total		1
WINDOW SEAL	ISOTOMID SPRINGTAILS , ,	1
WINDOW SEAL Total		1
WINDOWS	ANTHOMYIID FLIES , ,	1
	CLOVER MITE <i>Bryobia praetiosa</i> Koch	1
	DRUGSTORE BEETLE <i>Stegobium paniceum</i> (Linnaeus)	1
	PAVEMENT ANT <i>Tetramorium caespitum</i> (Linnaeus)	1
	SPRINGTAILS , ,	1
WINDOWS Total		5
WINDOWSILL	DRUGSTORE BEETLE <i>Stegobium paniceum</i> (Linnaeus)	1
WINDOWSILL Total		1
WISTERIA	MEALYBUGS , ,	1
	NOT AN INSECT , ,	1
WISTERIA Total		2
WOOD	ACROBAT ANTS <i>Crematogaster</i> spp.	1
	LICHENOPHANES BICORNIS <i>Lichenophanes bicornis</i>	1
	PINE SAWYERS <i>Monoctonus</i> spp.	1
	TERMITES , ,	1
WOOD Total		4
WOOD FILLER	BLACK CARPET BEETLE <i>Attagenus megatoma</i> (Fabricius)	1

WOOD FILLER Total		1
WOOD, MAPLE	CHARIESSA PILOSA <i>Chariessa pilosa</i>	1
WOOD, MAPLE Total		1
WOOL RUG	CASEMAKING CLOTHES MOTH <i>Tinea pellionella</i> L.	1
WOOL RUG Total		1
YARD	ALLEGHENY MOUND ANT <i>Formica exsectoides</i> Forel	3
	AMBER SNAIL , ,	1
	ANDRENID BEES , ,	2
	BLACK FLIES , ,	1
	BOXELDER BUG <i>Leptocoris trivittatus</i> (Say)	1
	BROADNECKED ROOT BORER <i>Prionus laticollis</i> (Drury)	1
	CICADA KILLER <i>Sphecius speciosus</i> (Drury)	1
	COMBFOOTED SPIDERS , ,	1
	CRAB SPIDERS , ,	1
	DADDY-LONGLEGS , ,	1
	FISHING SPIDER <i>Dolomedes tenebrosus</i>	1
	MOUND ANTS <i>Formica</i> spp.	1
	ROBBER FLY	1
	SCOLIA DUBIA <i>Scolia dubia</i>	1
	SMALLER YELLOW ANT <i>Acanthomyops claviger</i> (Roger)	1
	SOUTHERN YELLOWJACKET <i>Vespula squamosa</i> (Drury)	1
	VELVET ANT <i>Dasymutilla occidentalis</i> (L.)	2
	WHEEL BUG <i>Arilus cristatus</i> (Linnaeus)	1
	WOLF SPIDERS , ,	1
YARD Total		23
YARN	NO INSECTS FOUND , ,	1
YARN Total		1
YEW	BLACK VINE WEEVIL <i>Otiorhynchus sulcatus</i> (Fabricius)	1
	COTTONY TAXUS SCALE <i>Pulvinaria floccifera</i> (Westwood)	1
YEW Total		2
ZINNIA	BEETLES , ,	1
	BROWN MARMORATED STINK BUG <i>Halyomorpha halys</i> (Ståhl)	1
ZINNIA Total		2
ZOYSIA	MEALYBUGS , ,	1
ZOYSIA Total		1
Grand Total		1137

Count of COUNTY	
COUNTY	Total
Accomack	2
Albemarle	24
Alexandria(IC)	1
Alleghany	13
Amelia	3
Amherst	2
Appomattox	17
Arlington	6



Augusta	26
Bedford	13
Bland	1
Botetourt	13
Brunswick	2
Buckingham	4
Campbell	14
Carroll	4
Charlotte	2
Chesapeake(IC)	9
Chesterfield	11
Clarke	9
Craig	5
Culpeper	1
Cumberland	3
Danville(IC)	7
Dickenson	4
Dinwiddie	9
Emporia(IC)	1
Essex	5
Fairfax	30
Fauquier	15
Floyd	19
Fluvanna	7
Franklin	34
Frederick	32
Fredericksburg(IC)	1
Giles	9
Gloucester	2
Goochland	7
Grayson	7
Greene	17
Halifax	4
Hampton(IC)	25
Hanover	17
Henrico	34
Henry	9
Highland	7
James City	71
King George	1
King William	1
Lancaster	2
Lee	4
Loudoun	20
Louisa	14
Lunenburg	1
Lynchburg(IC)	15
Madison	4
Mathews	2

Mecklenberg	3
Middlesex	3
Montgomery	108
Nelson	15
New Kent	9
Newport News(IC)	9
Norfolk(IC)	6
Northampton	2
Northumberland	9
Nottoway	4
Orange	5
Out of State	2
Page	8
Patrick	7
Pittsylvania	16
Portsmouth(IC)	4
Powhatan	12
Prince George	3
Prince William	13
Pulaski	11
Radford	22
Rappahannock	14
Richmond	7
Richmond(IC)	9
Roanoke	37
Rockbridge	3
Rockingham	29
Russell	8
Scott	3
Shenandoah	15
Smyth	1
Southampton	1
Spotsylvania	24
Stafford	16
Suffolk(IC)	12
Tazewell	3
Virginia Beach(IC)	5
Warren	5
Washington	10
Westmoreland	2
Wise	13
Wythe	3
York	24
Grand Total	1137

---

**Activities:** The following table lists the magnitude of activities and services provided by the Insect Identification Laboratory (IIL) and the faculty and staff associated with it since 1967.

Number of Specimens Identified			
Year	Identifications for Extension Agents and the Public	Identifications from Exotic Pest Surveys, Numbers of Traps Examined	Specimens sent to the Systematic Entomology Laboratory, USDA at Beltsville, Md. *
1967	318	A	a
1968	984	A	a
1969	1104	A	a
1970	1245	A	a
1971	1276	A	100b
1972	970	A	516
1973	1124	A	184
1974	1264	A	316
1975	1430	A	160
1976	1437	A	223
1977	1365	A	282

1978	1351	A	89
1979	1770	A	120
1980	1527	A	23
1981	2028	A	89
1982	2004	A	100
1983	1815	A	36
1984	1745	A	45
1985	1730	A	20
1986	1537	62	16
1987	1731	0	32
1988	1719	69	15
1989	1877	145	10
1990	1629	120	37
1991	1874	120	23
1992	1516	80	13

1993	1642c	160	30
1994	1548	77	17
1995	1764	0	32
1996	1376	0	6
1997	1435	0	4
1998	1595	0	6
1999	1510	0	7
2000	1751	0	7
2001	1609	0	11
2002	1569	0	11
2003	1035	0	4
2004	1262	0	1
2005	1390	0	9
2006	1378	195	1
2007	1175	260	7
2008	1260	260	8

2009	1182	260	4
2010	1137	260	1
Total	63988	1808	2617

a Service not previously provided; b Estimated; c Includes requested *Harmonia axyridis* samples; \* Includes specimens sent to other taxonomists at other institutions

[Return to Table of Contents](#)

[Go to Insect ID Lab Home Page](#)

---

Prepared by Eric Day and Doug Pfeiffer.

December 2011