

LD
5655
A701
C48
No. 433
VPI
Spec

Portable Mash Hoppers

Mash hoppers, if made right, save lots of feed. They are well worth their cost, which is not great.

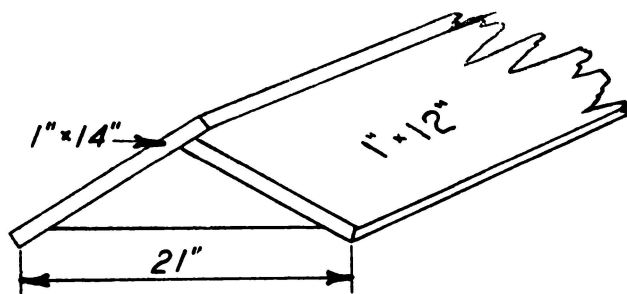
At the first, a very simple hopper will suffice; later on, those shown in the sketches will be needed.

A 1"x6" board 2' long and edged with strips 5/16"x3/8" will make a good hopper for 50 chicks until they are a week old. Others will be needed in this order: Hopper No. 2 for chicks from one to three weeks old. Place on stand for chicks three to six weeks old.

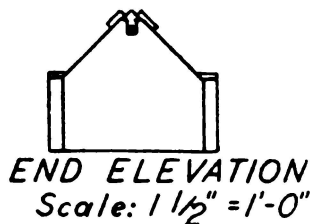
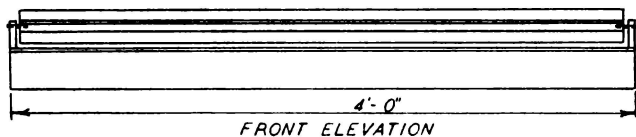
Hopper No. 3 for chicks after they are eight weeks old. Place on stand as soon as chicks will use the stand.

Hopper No. 4 for fully grown chickens.

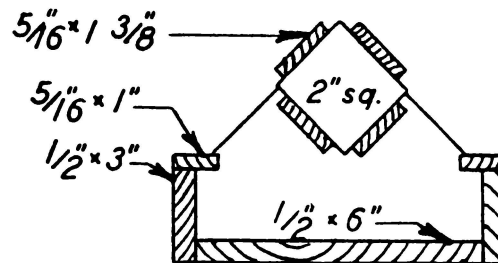
Note that each of these larger hoppers has a revolving frame on the top, to keep chickens from sitting on the hopper. If No. 3 is to be used outside, replace the revolving frame with a roof made of two boards, one 12" wide and one 14"—like this:



Hopper No. 2



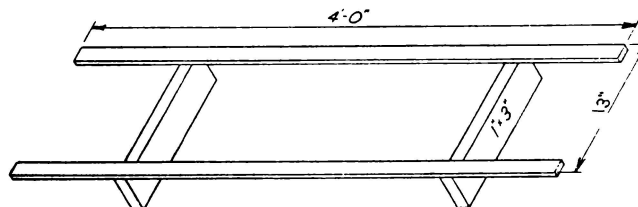
END ELEVATION
Scale: 1 1/2" = 1'-0"



CROSS - SECTION
Scale: 3" = 1'-0"

Bill of Materials

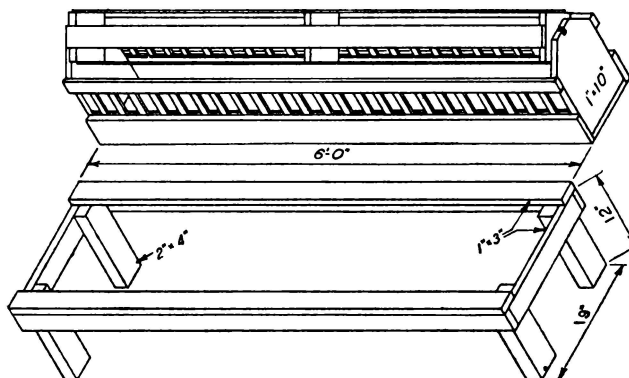
- 1 piece 1/2"x6"x6'
- 1 piece 1/2"x3"x8'
- 2 pieces 5/16"x1"x4'
- 4 pieces 5/16"x1 3/8"x4'
- Nails

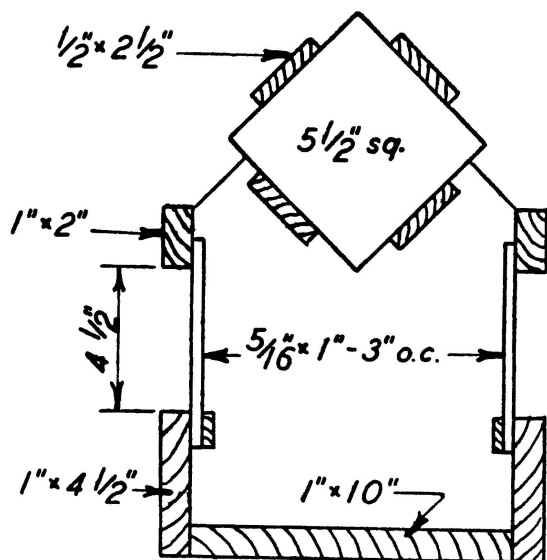


This is a view of the stand for hopper No. 2. To make it, you will need one piece 1"x3"x2'2" and two pieces 5/16"x1 3/8"x4'.

Hopper No. 3

Below is a view of the hopper used for growing pullets and the stand for it. Slats on the hopper are spaced 2" apart, or fencing with the vertical wires spaced 2" may be used.



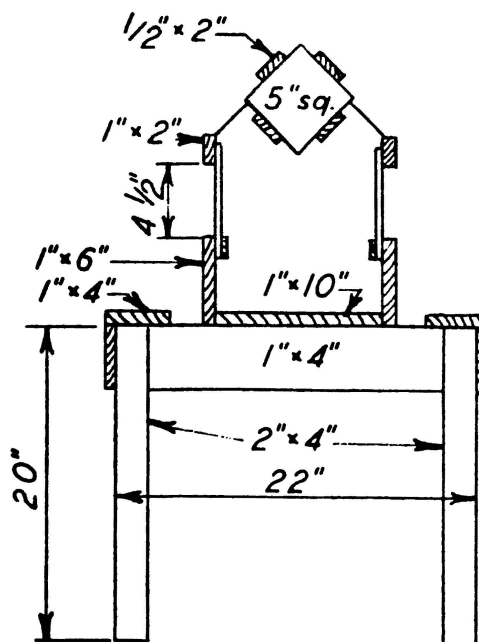
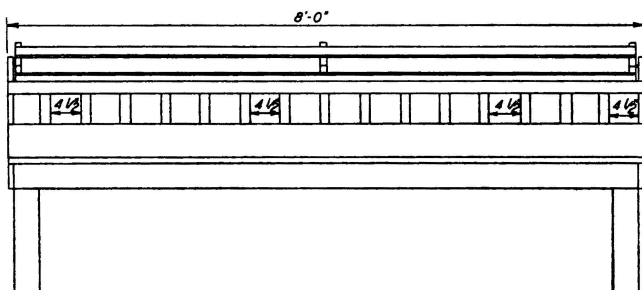


CROSS-SECTION
Scale: 2"=1'-0"

Bill of Materials

- 1 piece 1"x10"x10'
- 2 pieces 1"x4 1/2"x6'
- 2 pieces 1"x2"x6'
- 4 pieces 1/2"x2 1/2"x6'
- 7 pieces 5/16"x1"x6'
- Nails
- For stand:—
- 1 piece 2"x4"x4'
- 5 pieces 1"x3"x6'
- Nails

Hopper No. 4



CROSS-SECTION
Scale: 1"=1'-0"

Bill of Materials

- 1 piece 2"x4"x7'
- 1 piece 1"x10"x12'
- 2 pieces 1"x6"x8'
- 5 pieces 1"x4"x8'
- 2 pieces 1"x2"x8'
- 5 pieces 5/16"x1 3/8"x8'
- 4 pieces 1/2"x2"x8'
- Nails

NOTE

The size of materials shown on hoppers or given in bills of material may be changed slightly to allow the use of material on hand.

For further information, see your County Agent.