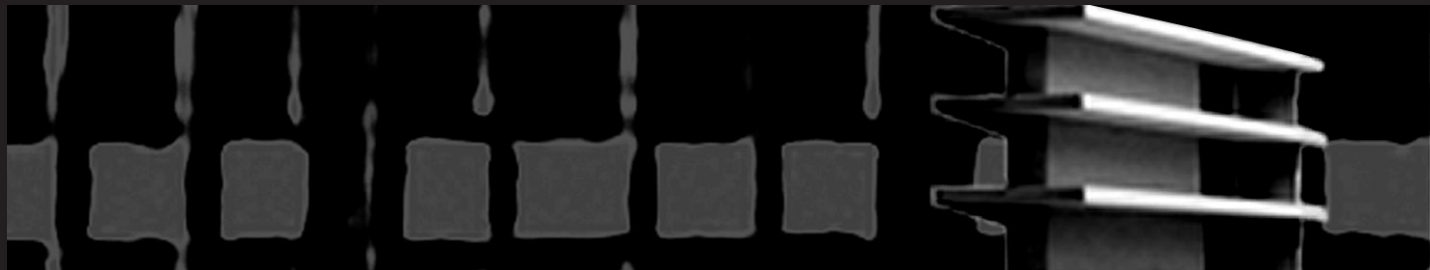


framing architecture : Chur

European Studies 2001-2002
David EE Shirey



Copyright 2003



In the Swiss city of Chur, located in the Swiss-German Canton of Graubunden, a project was developed for Radio Romaunch (RTR). The program called for a mixed use facility housing recording, production and broadcasting facilities for both radio and television programming.

Mountain

1:10,000 Location plan



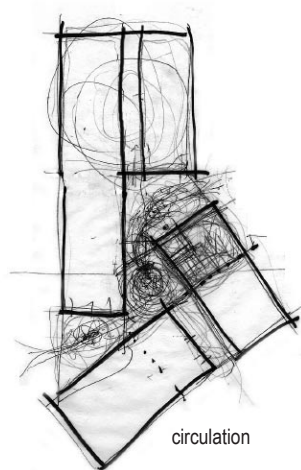
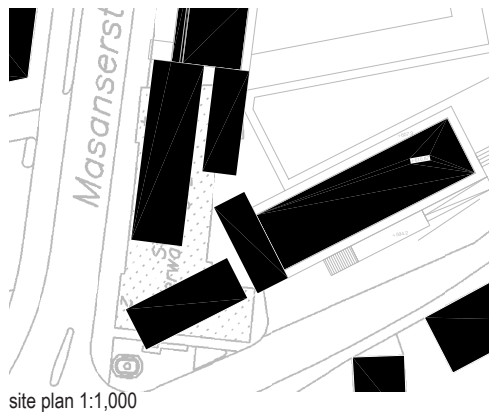
new city

site

old city

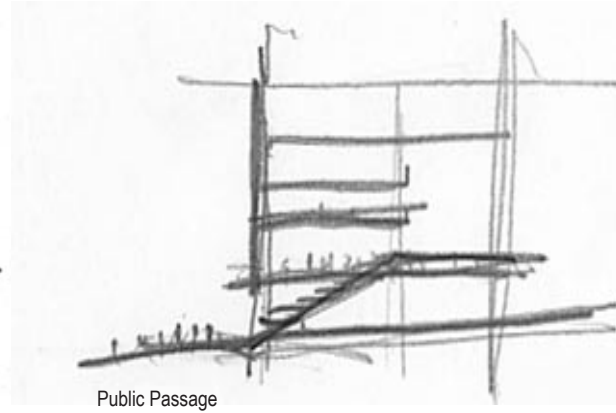
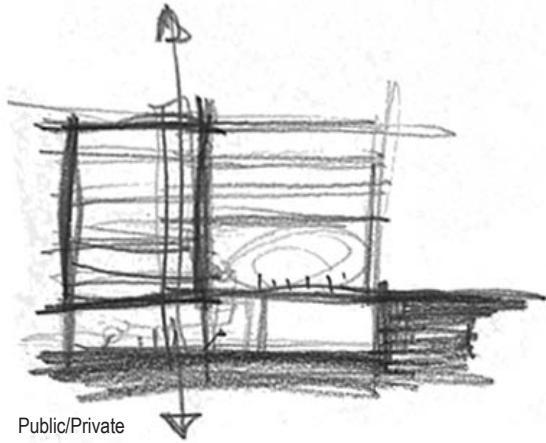
The site is situated in the middle of the valley just north of the old city wall on axis with the main road through the center of Chur. Sitting not unlike a rock in the river, the building diverts traffic, both pedestrian and automotive, while simultaneously allowing for the flow of traffic to enter the building on axis.

1:5,000 Site Plan



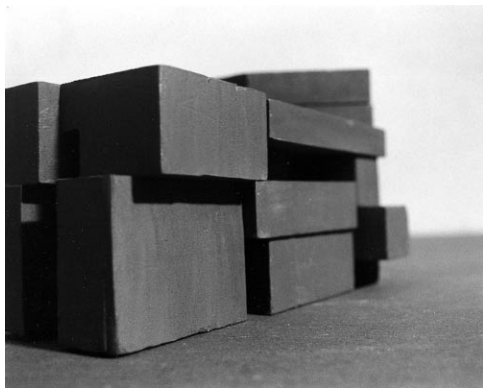
Spatially, the building is separated into 4 independent steel frame structures, with each silo housing 1 of a given set of primary functions: administration, vertical services, technical, and production. The voids between the structures then become the primary horizontal circulation.

Concept Study

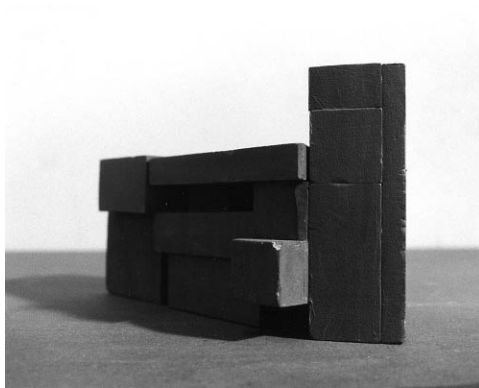


Programmatically, those functions requiring more privacy and acoustic control are located furthest from the corner, and elevated away from the street, thus providing several opportunities for integrating public spaces and functions at street level, while maintaining a clear delineation between public and private spaces. Therefore, the primary entrance to the building is located on the corner, opening the building as the terminus to Grabenstrasse.

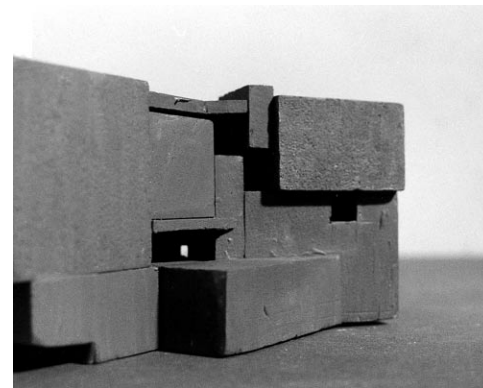
Conceptual Sketches



Primary Face

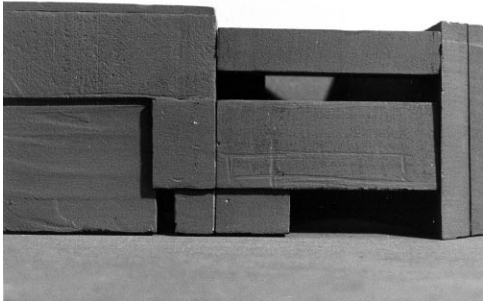


Corner Entry

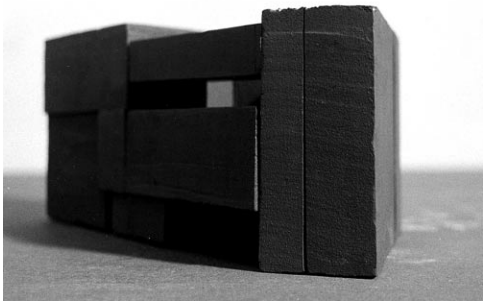


Courtyard Face

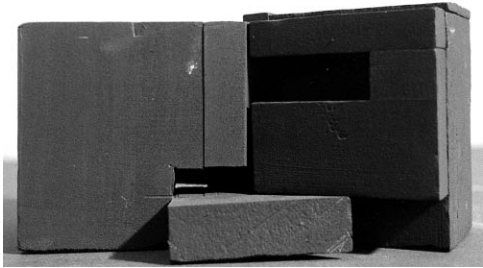
Massing Study I



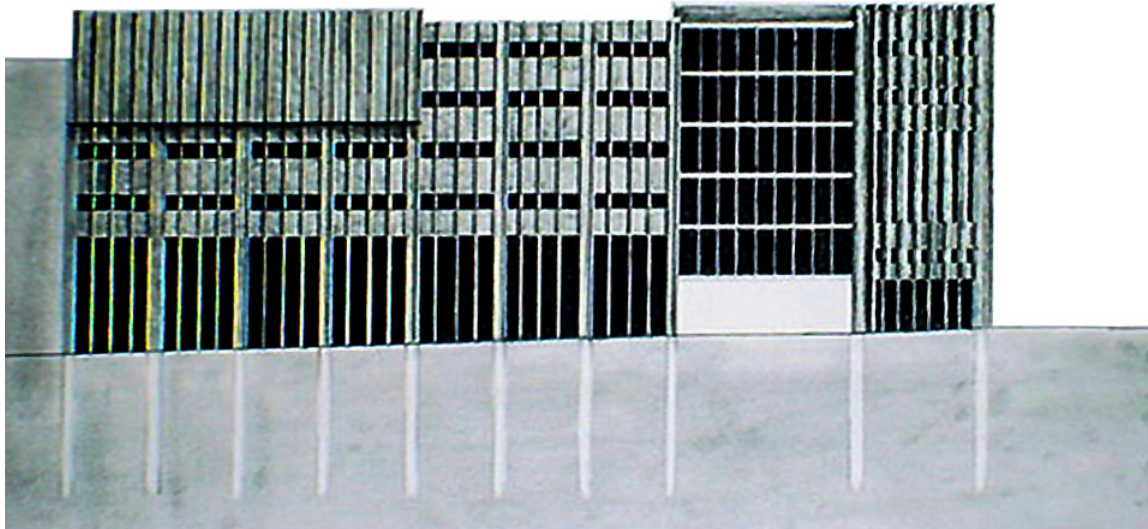
Primary Face



Corner Entry



Courtyard Face

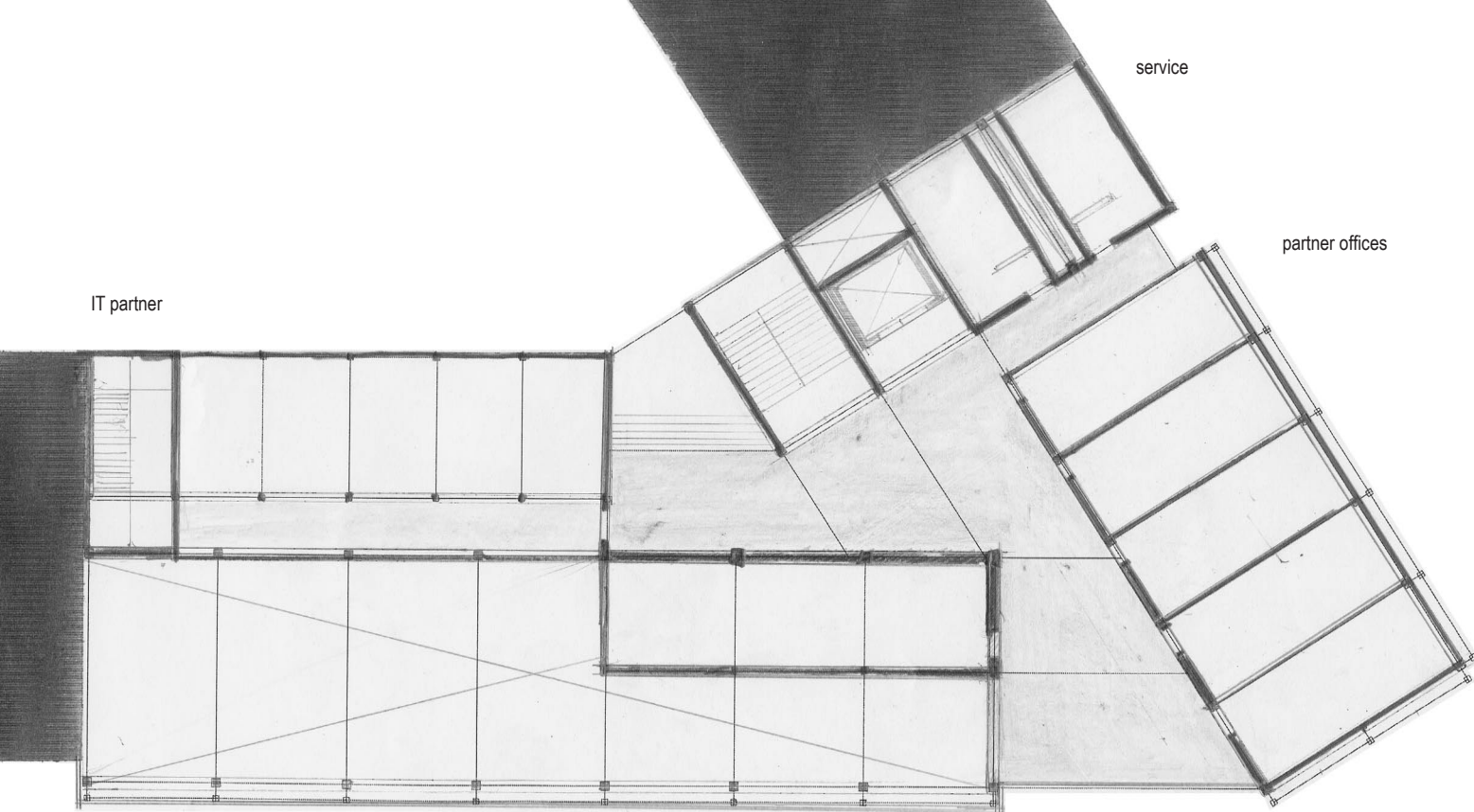


A set of self-contained modular wooden wall and floor units are inserted into the 4 steel frames, based on the programmatic delineation of spaces. This allows each room to be simultaneously insulated acoustically, while internally allowing for brief reverberation times, ideal for production. The structures are then wrapped in copper, which is peeled back as needed to provide openings and windows, with the ground floor being almost entirely open to allow for a 5,000 sqft. public events hall, and a cafe. Resultant in-between spaces are then in-filled to become the primary horizontal circulation. As the circulation spaces are generally semi-public they are simply enclosed with a glass curtain wall.

Facade Study



1:250 Ground Floor Plan

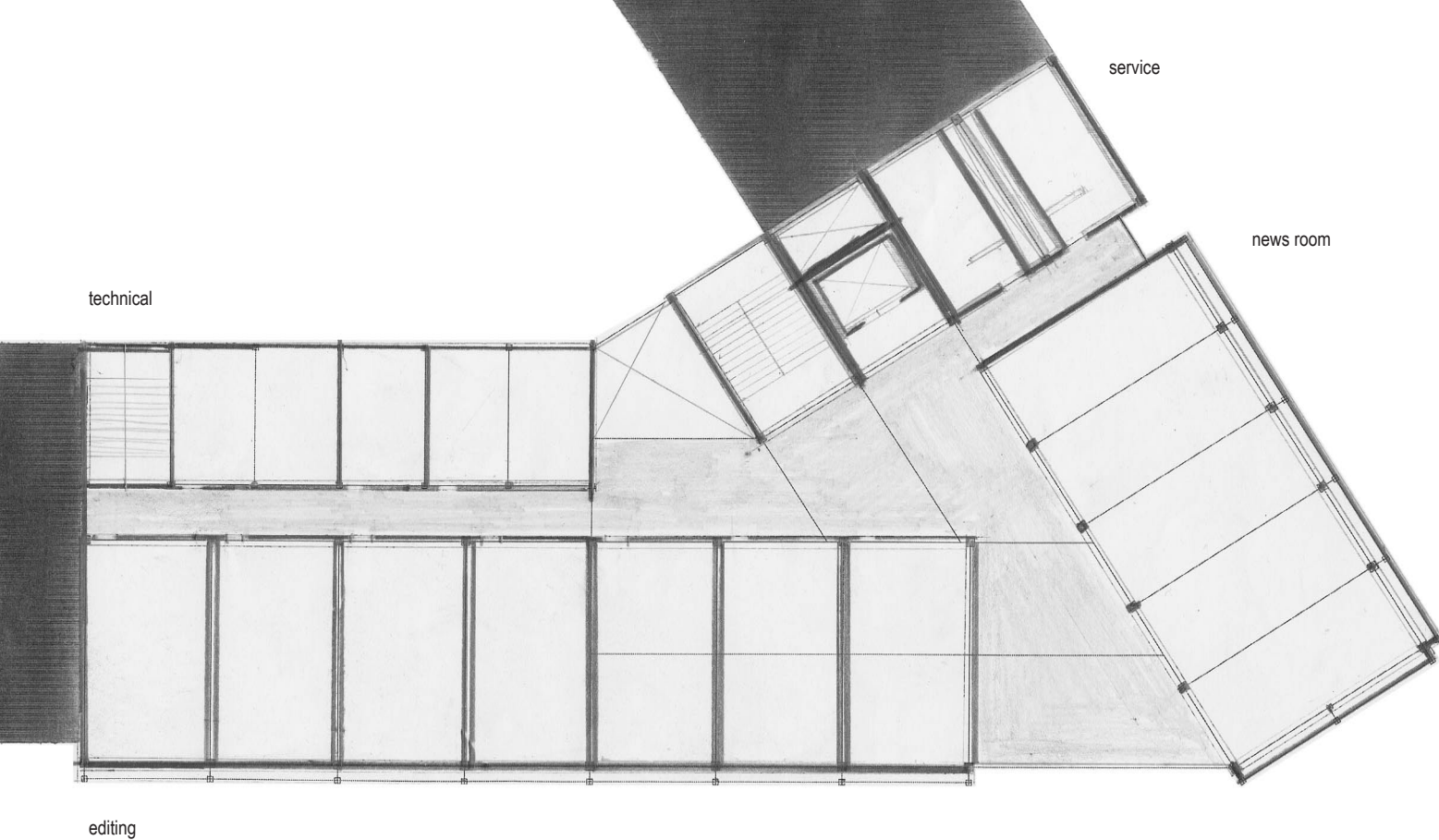


IT partner

service

partner offices

events hall



1:250 3rd Floor Plan

AV/dubbing

service

news room

technical offices

1:250 4th Floor Plan

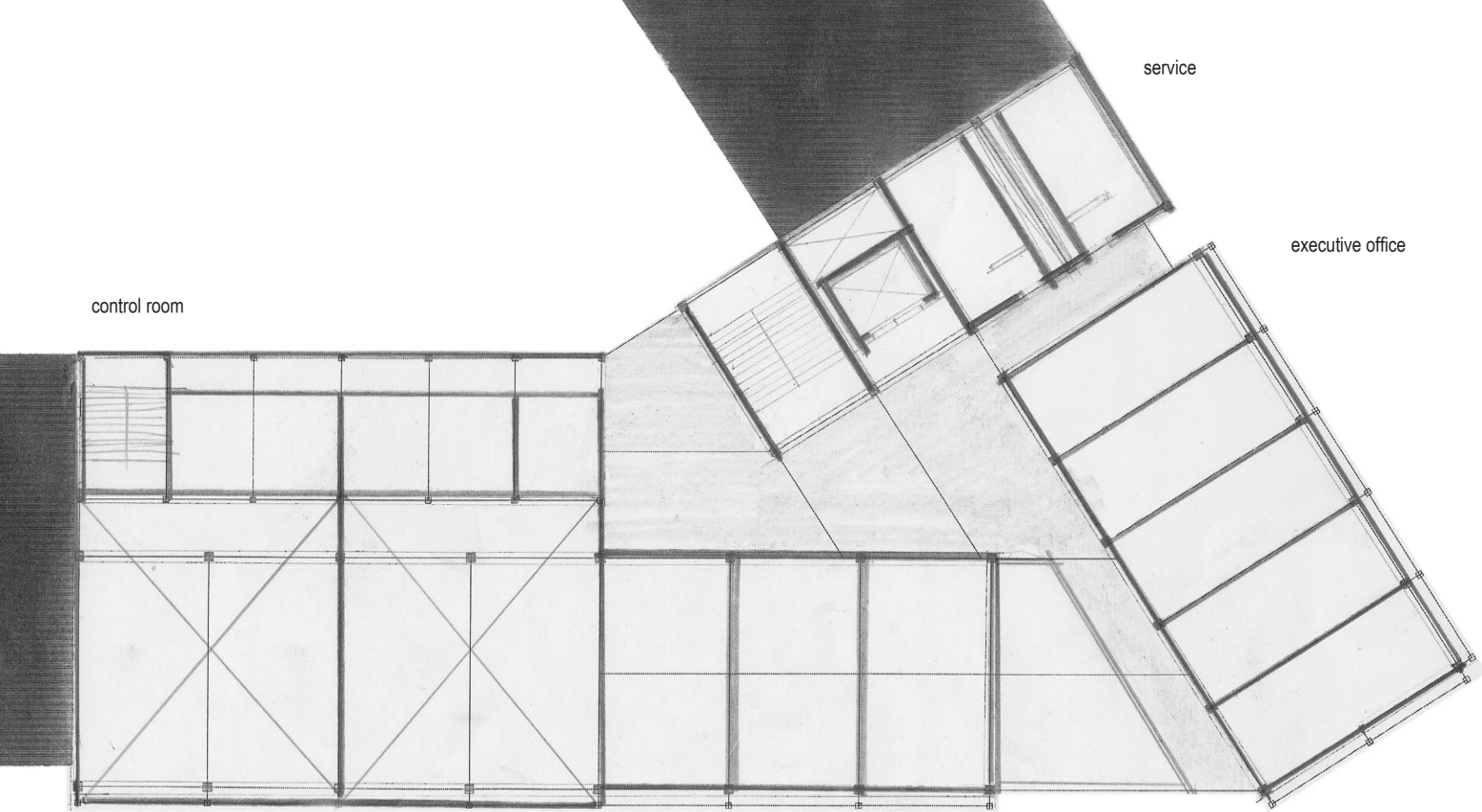
studio reception hall

service

office

TV + Radio studios

1:250 5th Floor Plan

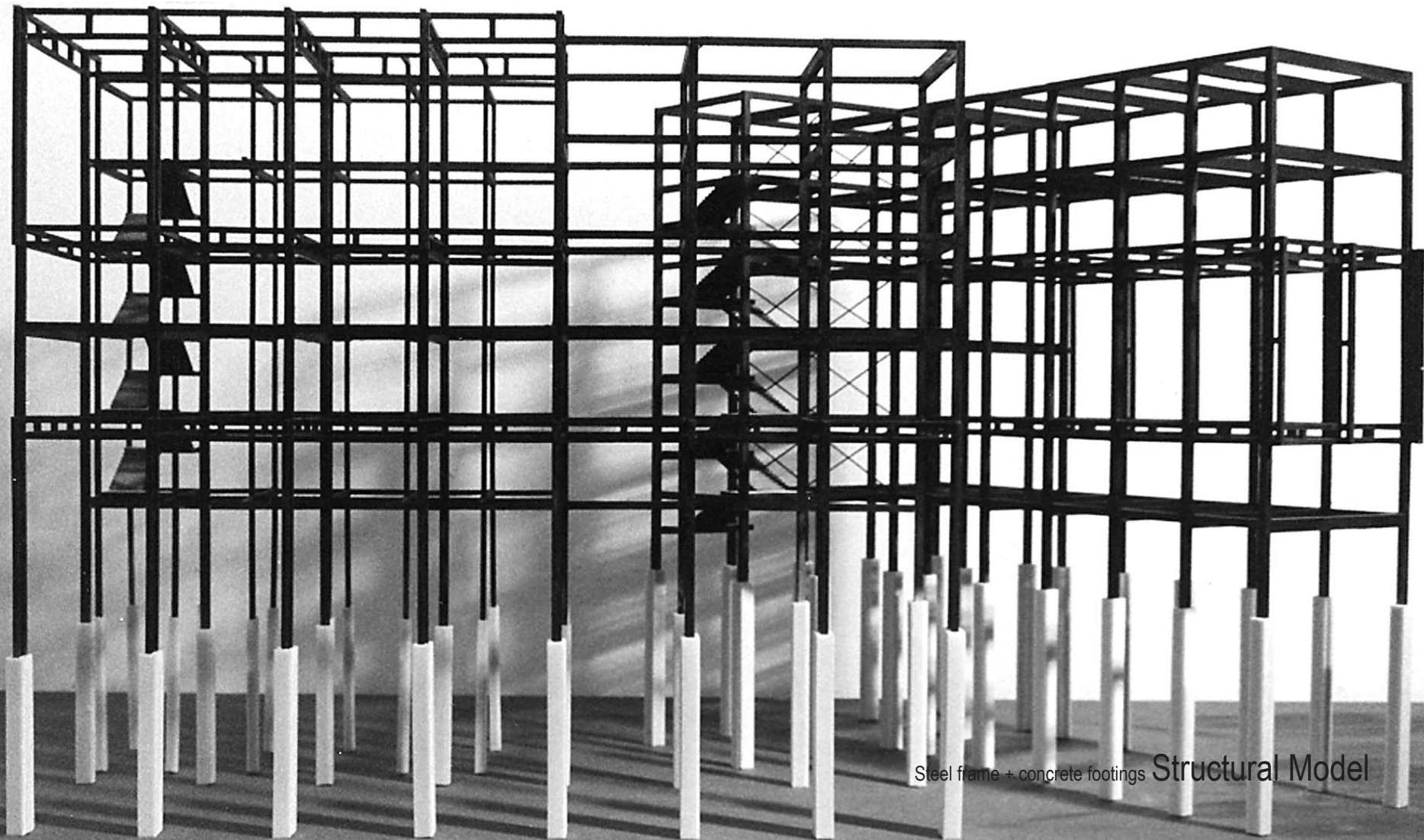


control room

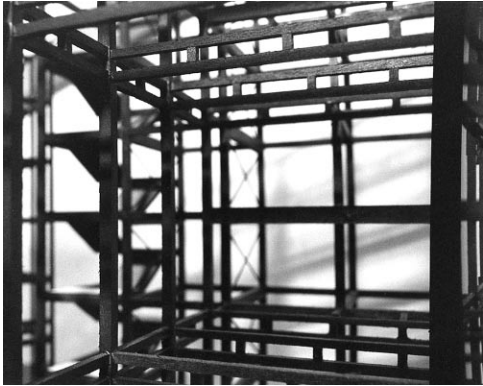
service

executive office

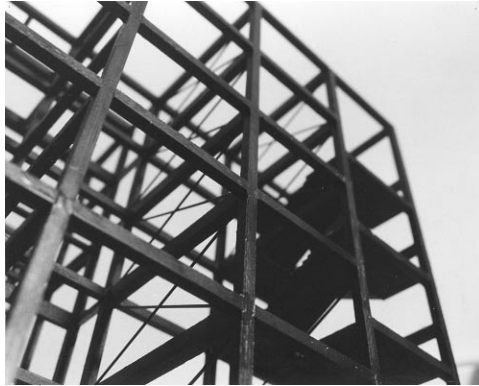
TV + Radio studios



Steel frame + concrete footings Structural Model



news room

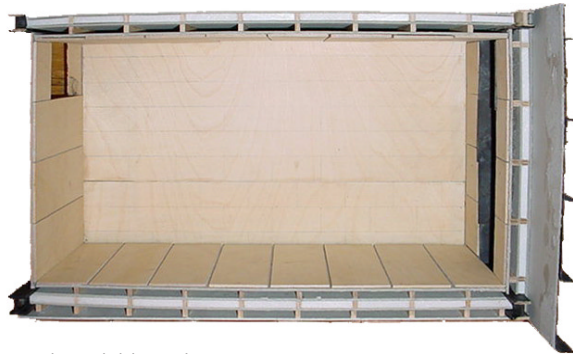


service



circulation

Structural Model



acoustic sandwich panel system



acid bathed standing seam copper skin



copper transition at exterior/interior



Masanserstrasse view, Photomontage