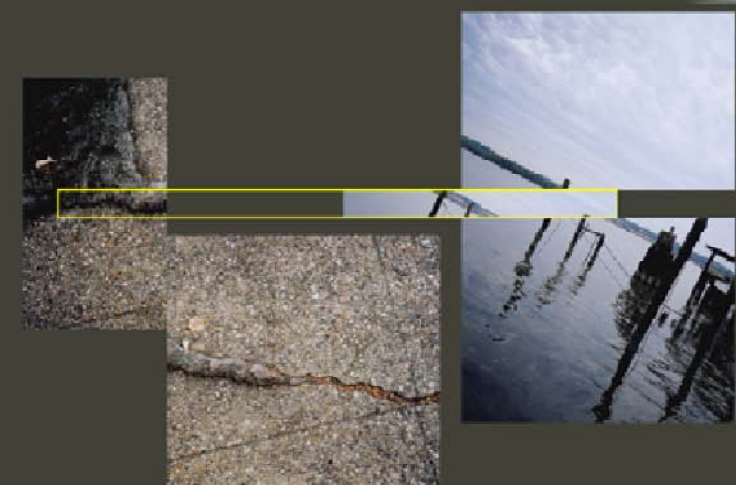


Selected images from contextual site walks taken throughout the thesis process
September 2002 - March 2003

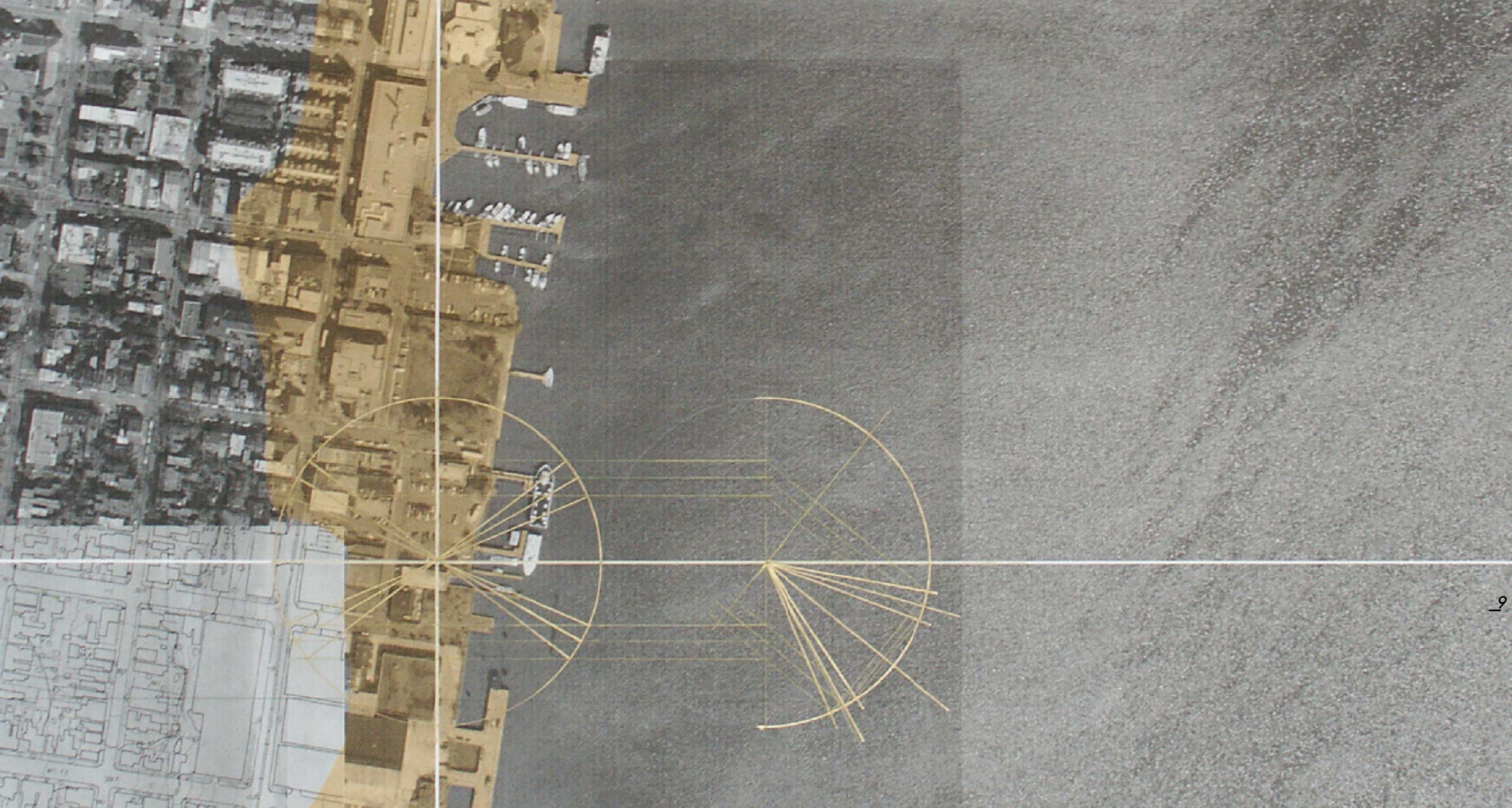




Meditation on Weathering for Alexandria, Virginia
October 2002

MATERIAL RECIPROCITY

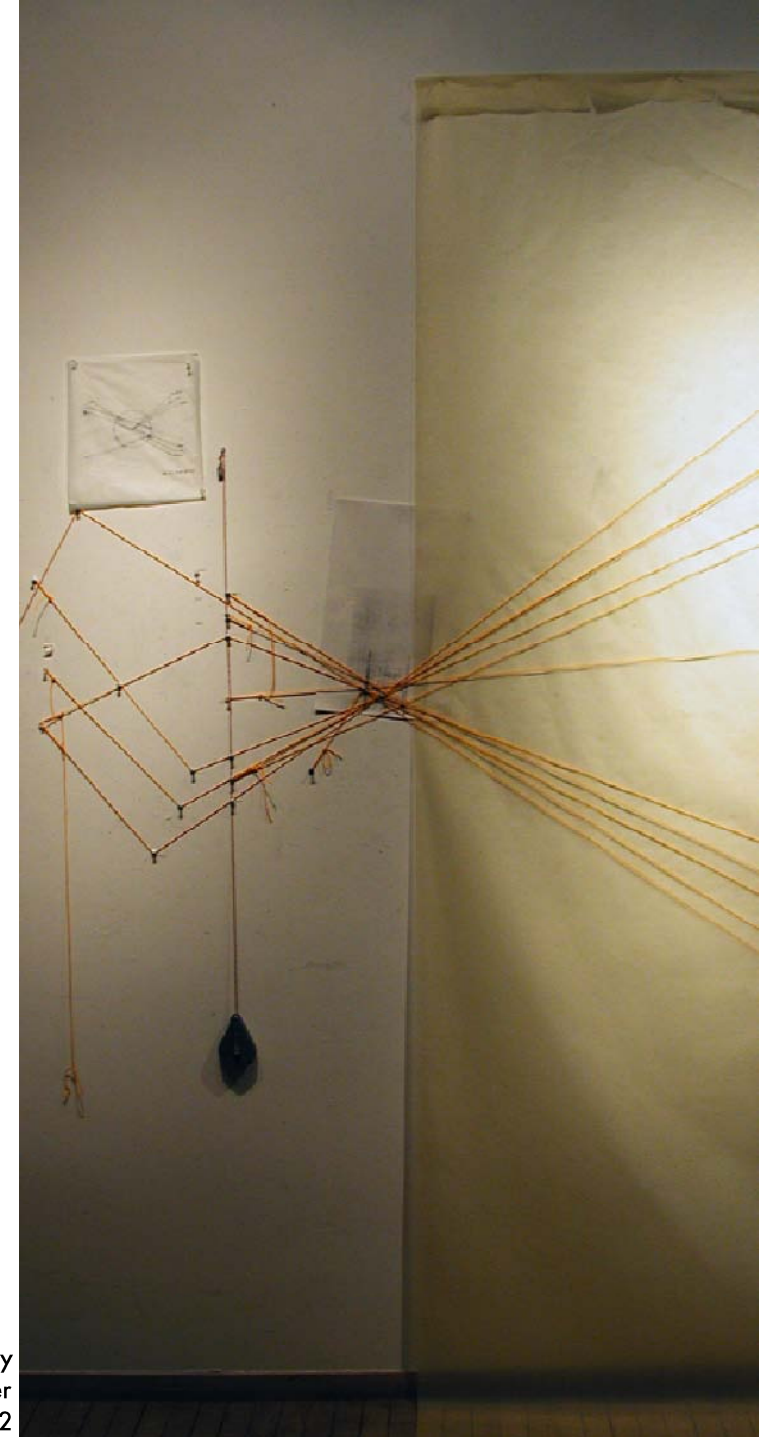
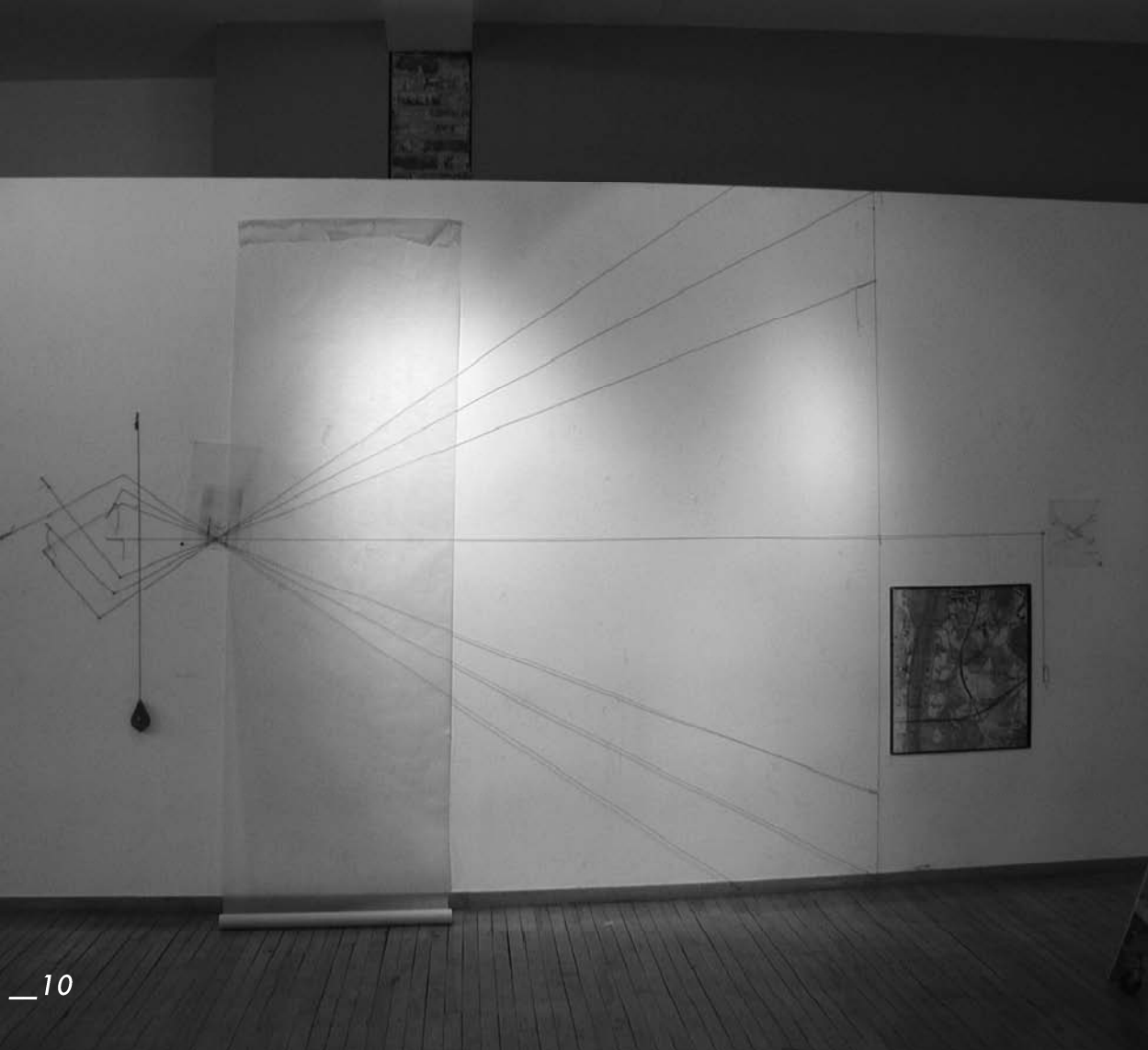
The acts of rain, wind and sun upon a building are ever present phenomena. Conventional understanding of the process of weathering is considered negative, in respect that the acts themselves are destructive, and can result in the building's failure. Building maintainance is a mitigating force, acting to resist and sometimes eradicate the presence of these effects. While this position is common, it is relatively new, a product of modern thinking and industrialized processes. The advent of mechanization and standardization brought with it a new sensibility about healthy and beautiful environments. This thesis investigates the proactive phenomenon of Weathering. "Finishing ends construction, weathering constructs finishes." (Leatherbarrow, *On Weathering*) In this respect, the building can no longer be viewed as completed when workmen (or the architect) vacate the jobsite. As Weathering imparts its effects, the building progressively integrates itself with its context. This act of *material reciprocity* returns the work back to the place from which its elements originated. A dialog has begun between the building and its surroundings, modifying one's perceptions of both.



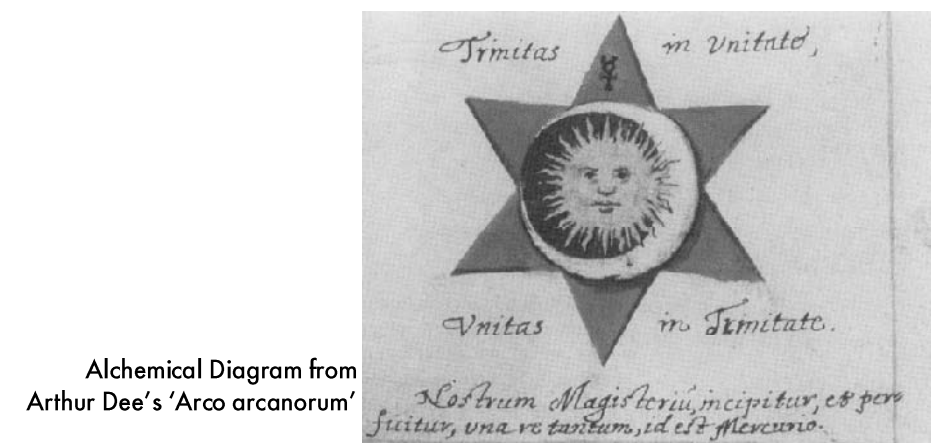
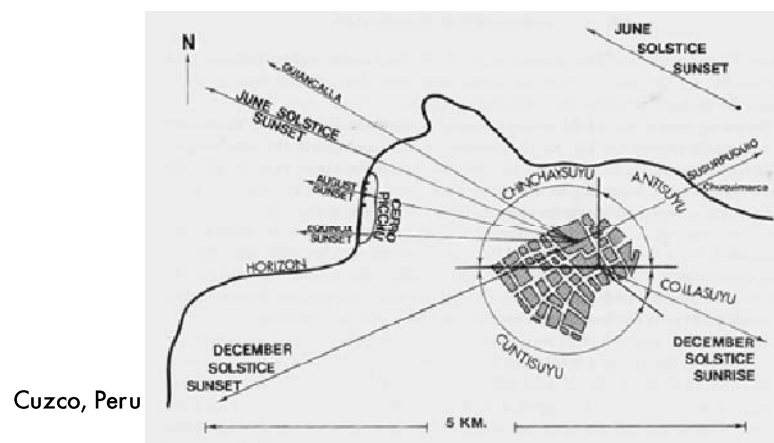
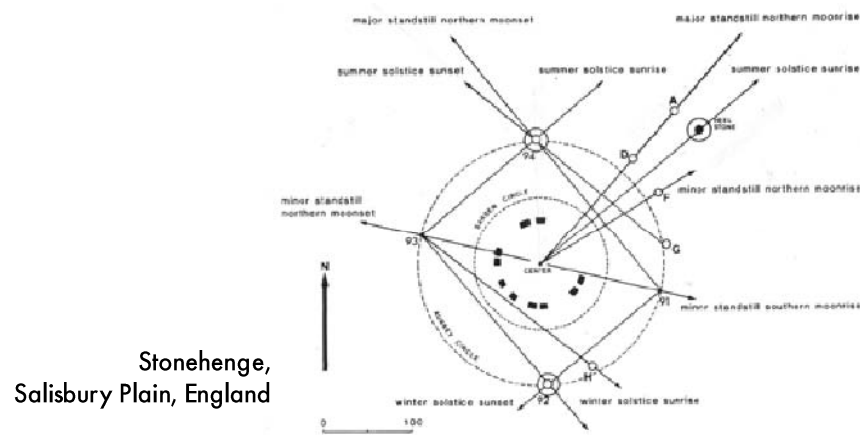
Solstice and Equinox Calculations for the Site, longitude W77.1, latitude N38.8
November 2002

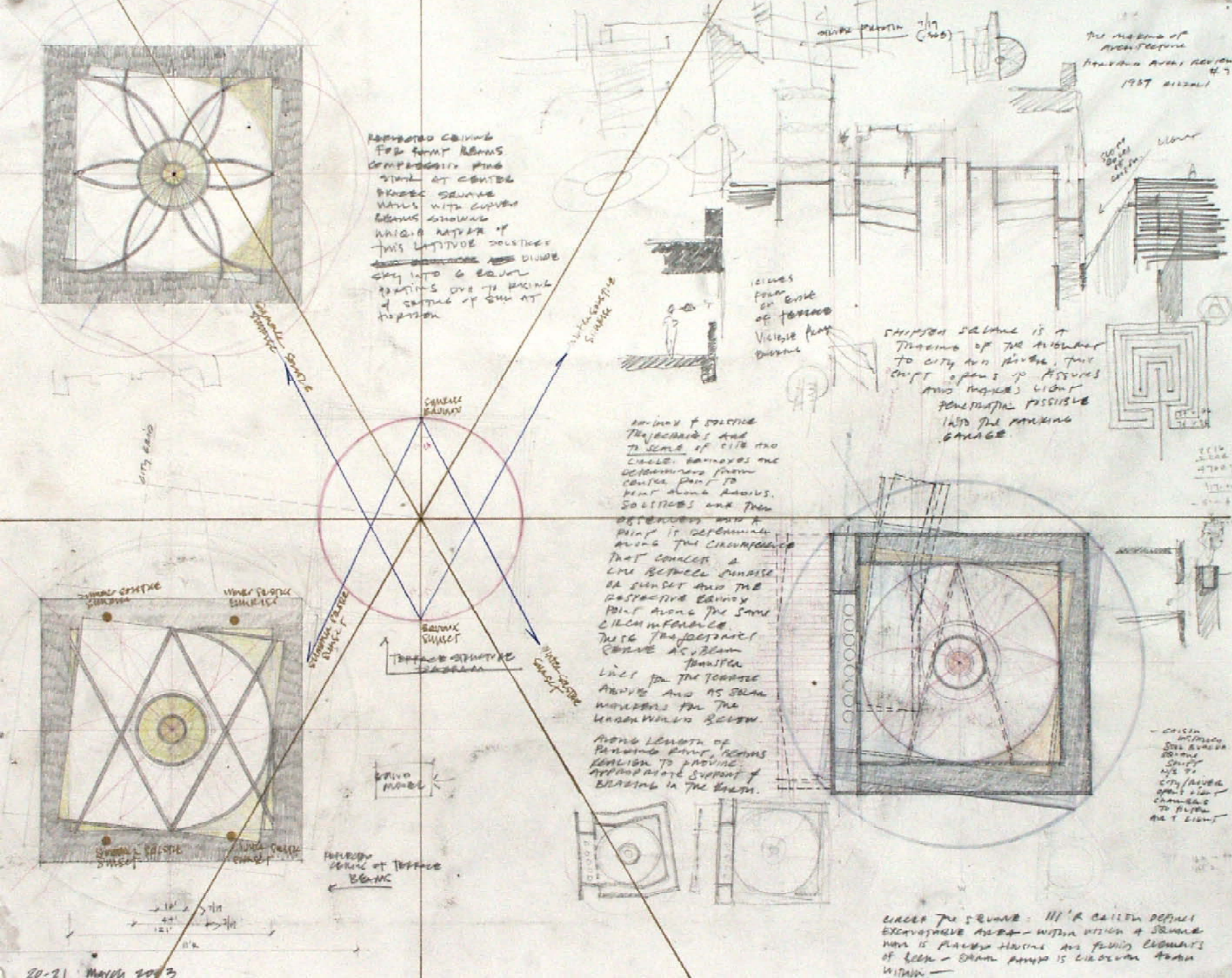
BEER IS OF THE SUN AND THE MOON

The Sun provides sustenance for the barley ripening for harvest. The Moon wields its gravitational influence upon the waters of the Earth. Heavenly bodies bestow their gifts today as the Gods did at the time of Creation, at the time when the secrets of beer-making were given to man. These same bodies impart the phenomena that shape and finish architecture. Understanding the rhythmic cycle of the Sun and Moon is imperative for the making of Architecture. The Ancients studied these bodies and subsequently built monuments to their discoveries. More recently, alchemists saw the union of these opposing heavenly forces as a magical transformation of substance, not unlike the chemical transformation in the making of beer.



Solstice, Equinox and Moon Standstill Site Study
West Room, Washington | Alexandria Center
Thanksgiving 2002





Studies for Astronomically Aligned Structure

Notes 20-21 March 2003

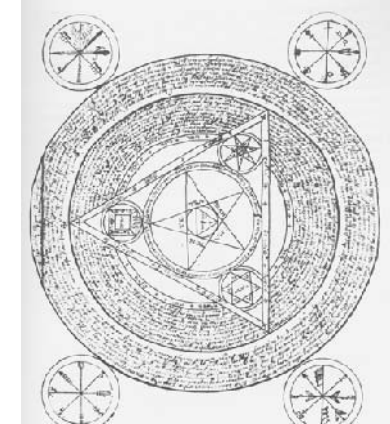
Parking ramp beams compression ring stair at center braces square walls with curved beams showing unique nature of this latitude solistices and equinoxes divide sky into 6 equal portions due to rising & setting of sun at horizon.

Equinox & solstice trajectories are to scale of site and circle. Equinoxes are determined from center point to point along radius. Solistices are then observed and a point is determined along the circumference that connects a line between sunrise or sunset and the respective equinox point along the same circumference.

These trajectories serve as transfer beam lines for the terrace above and as solar markers for the underworld below. Along length of parking ramp, beams realign to provide appropriate support & bracing in the earth.

Shifted square is a tracing of the alignment to city and river. This shift opens up fissures and makes light penetration possible into the parking garage.

Alchemical Mandala



Mesoamerican Calendar

