



A COLLABORATION BETWEEN IMAGINATION AND REALITY

**Eric Garcia**

United States Park Police  
Horse Stables and Offices on The National Mall  
Washington D.C.

A Design Thesis Submitted to the Graduate Faculty of  
Virginia Polytechnic Institute and State University  
in partial fulfillment of the requirements for the degree of

**Master of Architecture**

June 21, 2004

Washington-Alexandria Center for Architecture and Urban Studies  
Alexandria Virginia

**Dr. Marco Frascari, Chair**

**Dr. Paul Emmons**

**Susan Piedmont- Palladino**



Many cultures and civilizations throughout history have developed beliefs that explain the creation of man and his role in nature. With the development of these beliefs, man developed symbolism which he applied to material objects and objects that make up his environment. As man developed his ability to control his surroundings through construction, symbolism entered his architecture.

Through the application of anthropological relationships with the environment and the use of symbolism, this thesis aspires to investigate relationships between man, horse and rider.

Thank you Marco, Jaan, Paul, Susan, and Joe for your guidance, insight and encouragement.

John White, John Zellweger, T.J. Finney, Scott Stephens James Cooke, Tony Torres and John Schippers; thank you for inspiring me to follow my imagination.

Heather and Danielle, I wish you happiness and success!

To my daughters  
and wife for their love and  
encouragement.

Imagination is what makes our sensory experience meaningful, enabling us to interpret and make sense of it, whether from a conventional perspective or from a fresh, original, individual one. It is what makes perception more than the mere physical stimulation of sense organs. It also produces mental imagery, visual and otherwise, which is what makes it possible for us to think outside the confines of our present perceptual reality, to consider memories of the past and possibilities for the future, and to weigh alternatives against one another. Thus, imagination makes possible all of our thinking about what is, what has been, and, perhaps most important, what might be.

Nigel J.T. Thomas

## **Table of Contents**

i Title

ii - iii Abstract

iv Dedication

v Acknowledgments

vi Table of Contents

1 Images - an exploration of imagination

8 Marginalia - a reasoning

22 Site - a location of symbolism and reverence

25 Plans - the collaboration

42 Model - a construction

47 Bibliography

48 Vita

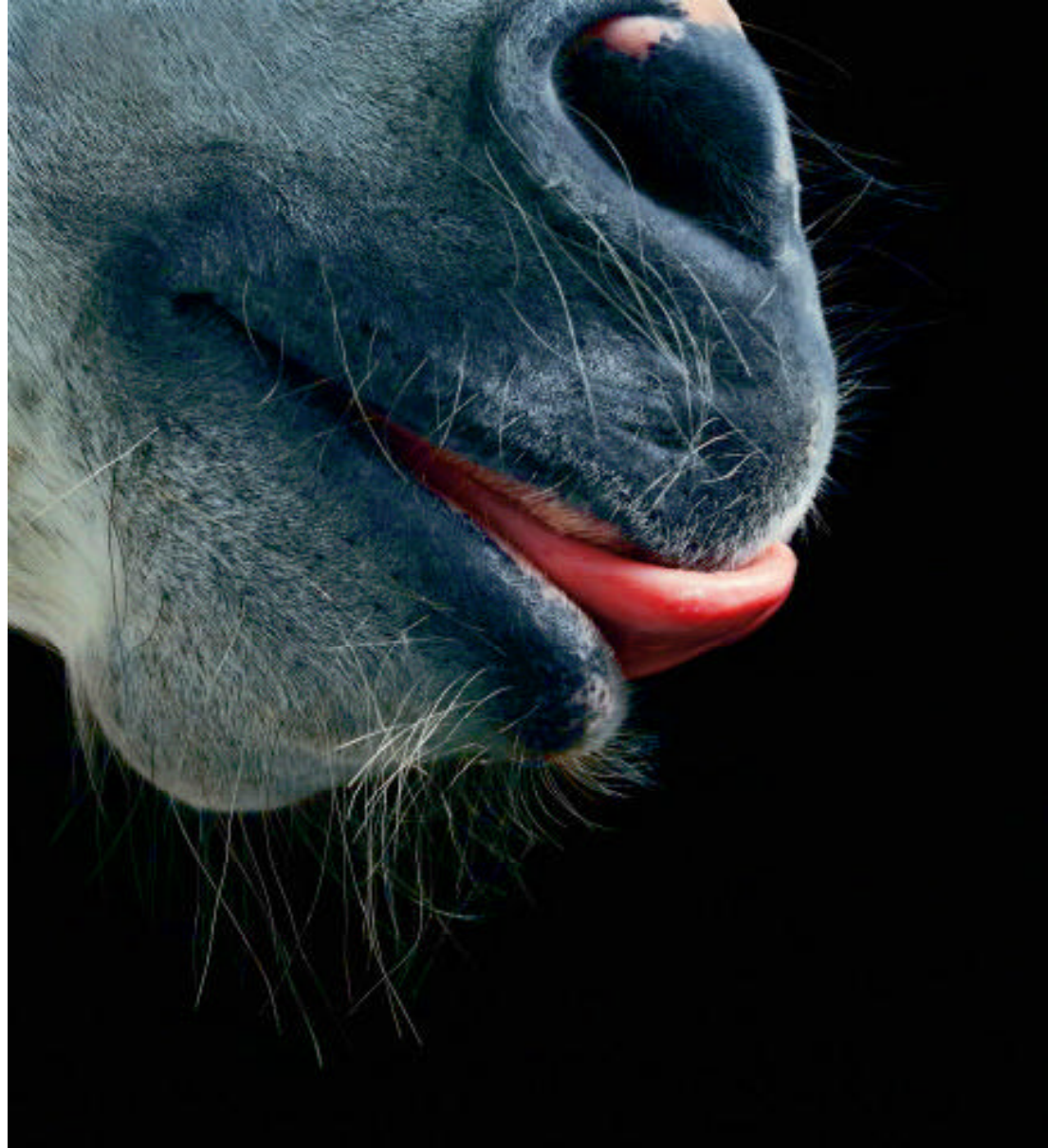
# Images

an exploration of imagination

I roused my self, and looked about me in the Room where I was left alone; this was furnished like the first, only after a more elegant Manner. I rubbed my Eyes often, but the same Objects still occurred. I pinched my Arms and Sides to awake myself, hoping I might be in a Dream. I then absolutely concluded, that all these Appearances could be nothing else but Necromancy and Magick. But I had no time to pursue these Reflections; for the Gray Horse came to the Door, and made me a Sign to follow him into the third Room, where I saw a very comely Mare, together with a Colt and Fole, sitting on their Haunches, upon Mats of Straw, not unartfully made, and perfectly neat and clean.

Jonathan Swift





The Craving



Man and Horse



Perception



Emblem of Epona  
inspired by Roman artifacts

Epona, the mythical patroness of Horses was worshipped by the Gauls as the protector of the horse, stable, grooms and carters. When the Romans conquered the Gauls, Epona was adopted as the deity of horses. The Romans carried her legend throughout Europe where evidence of her affiliation with the horse exists today.



Centaur

Ixion of Greek mythology was in love with Zeus's wife Hera. Motivated by jealousy, Zeus made a likeness of Hera out of a cloud and called her Nephele. Ixion believed the creature was Hera and with her produced a son named Centaurus. Centaurus then mated with the mares of Thessaly and produced the centaurs.

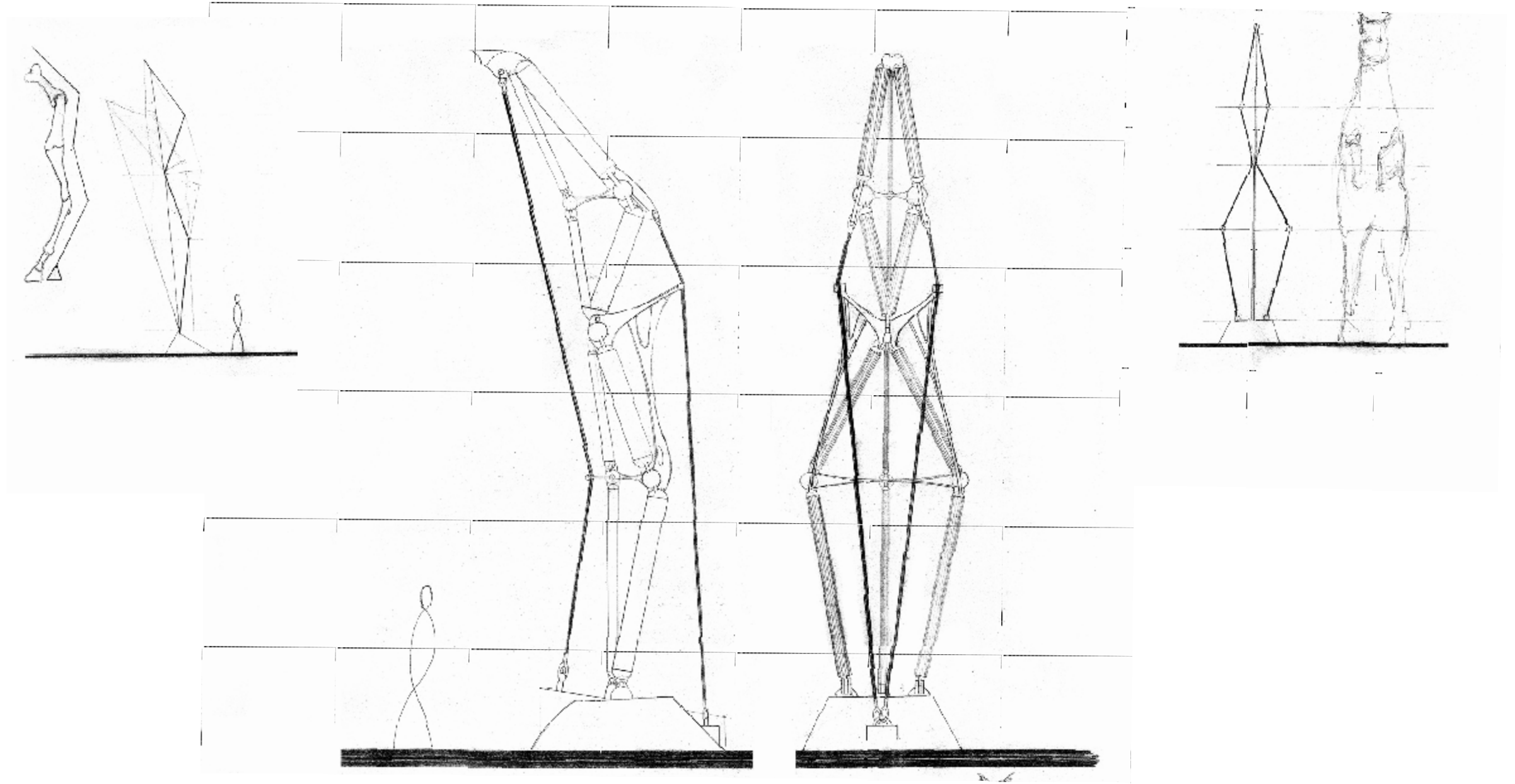


Centaur

Anatomy defines movement, scale, strength and weaknesses

# Marginalia

a reasoning



Study  
Anatomical structure

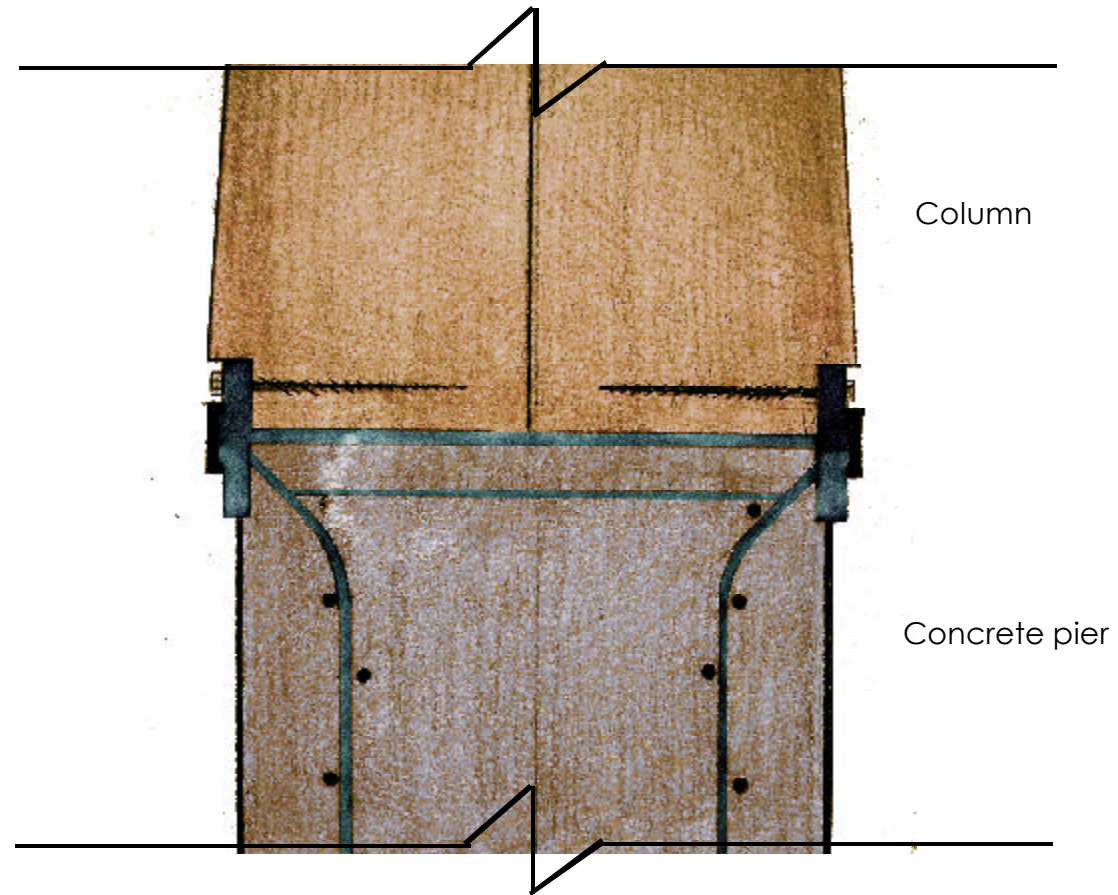




horse

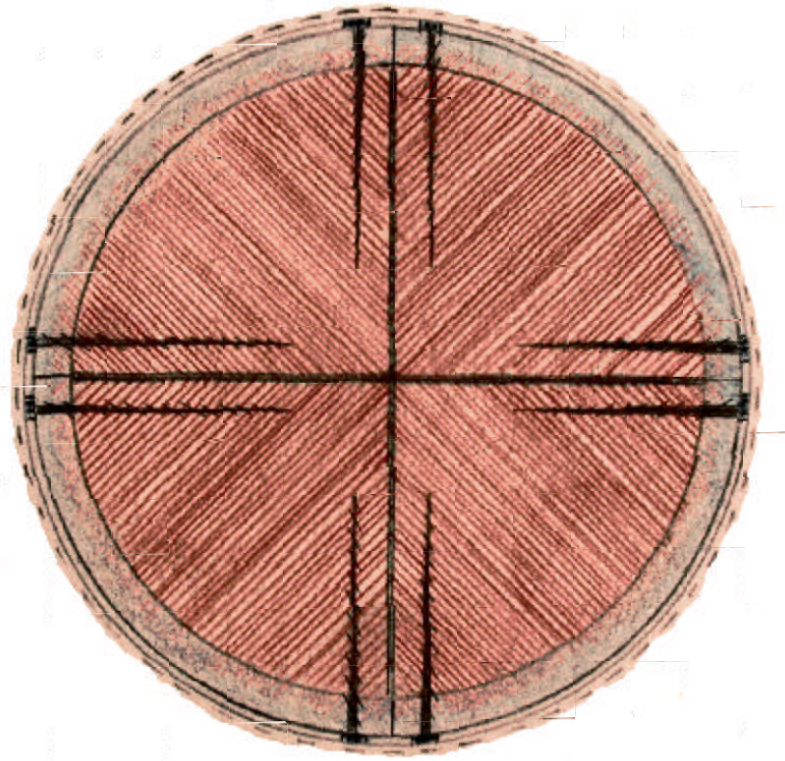
laminated wood and steel. A steel ring binds the column to the weight bearing capital.

Man's early understanding of the horse was that of a means of nourishment. This relationship abruptly changed when man captured and tamed the horse. It was the harness that bound the horse to man and man to the horse. This method of control continues to exist today and has allowed the horse to become a significant element present throughout man's history.



☞ Horse Shoe

Nails bind the shoe to the hoof.  
This method remains in use today.



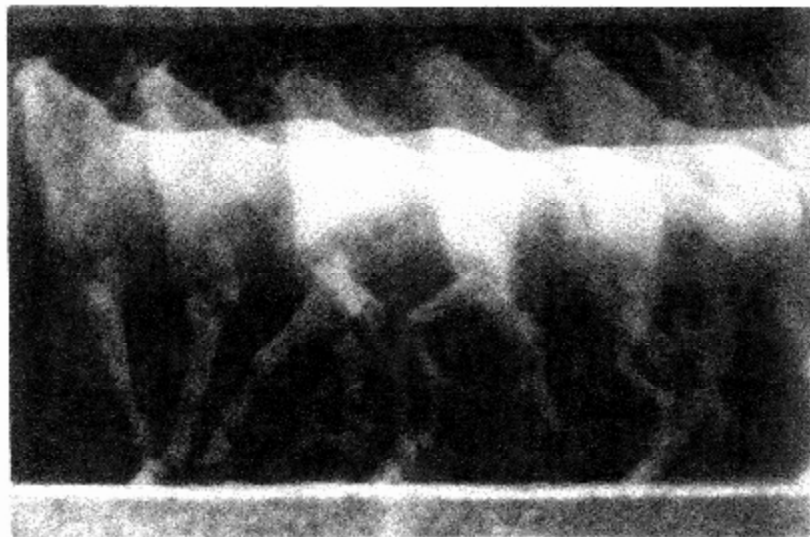
☞ Horse Shoe

Column connection  
Plan detail



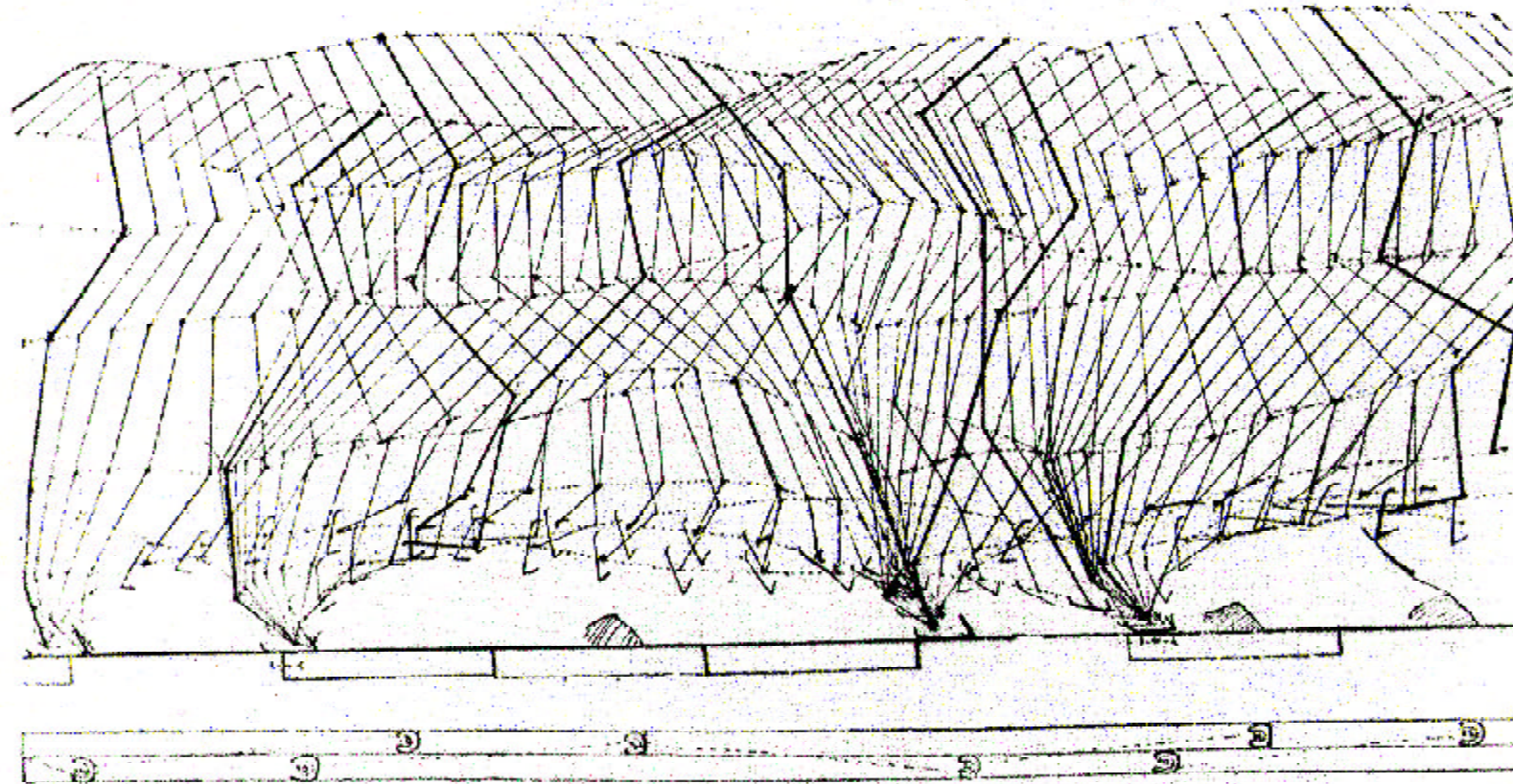
### ↻ path of travel

A mounted U.S. Park Police routine path of travel adjacent to Independence Avenue near the site. The rhythmic motions of the non linear path imply regular beats of the hoofs.



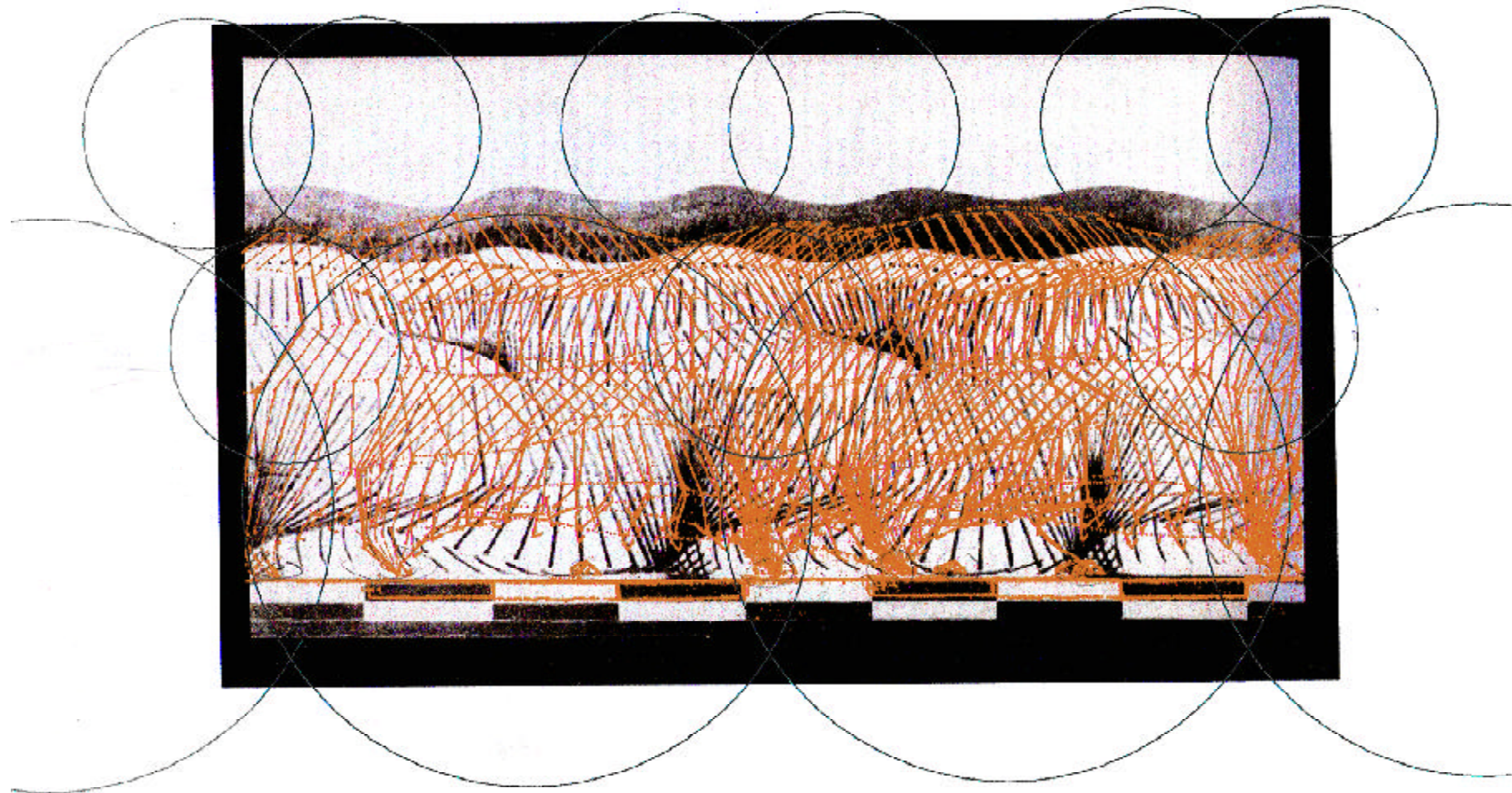
Investigations of Movement along  
a path of travel

The images above were taken by Etienne-Jules Mary, an 18th century physician and physiologist who researched movement through space and time. These images exhibit a shared placement separated by time.



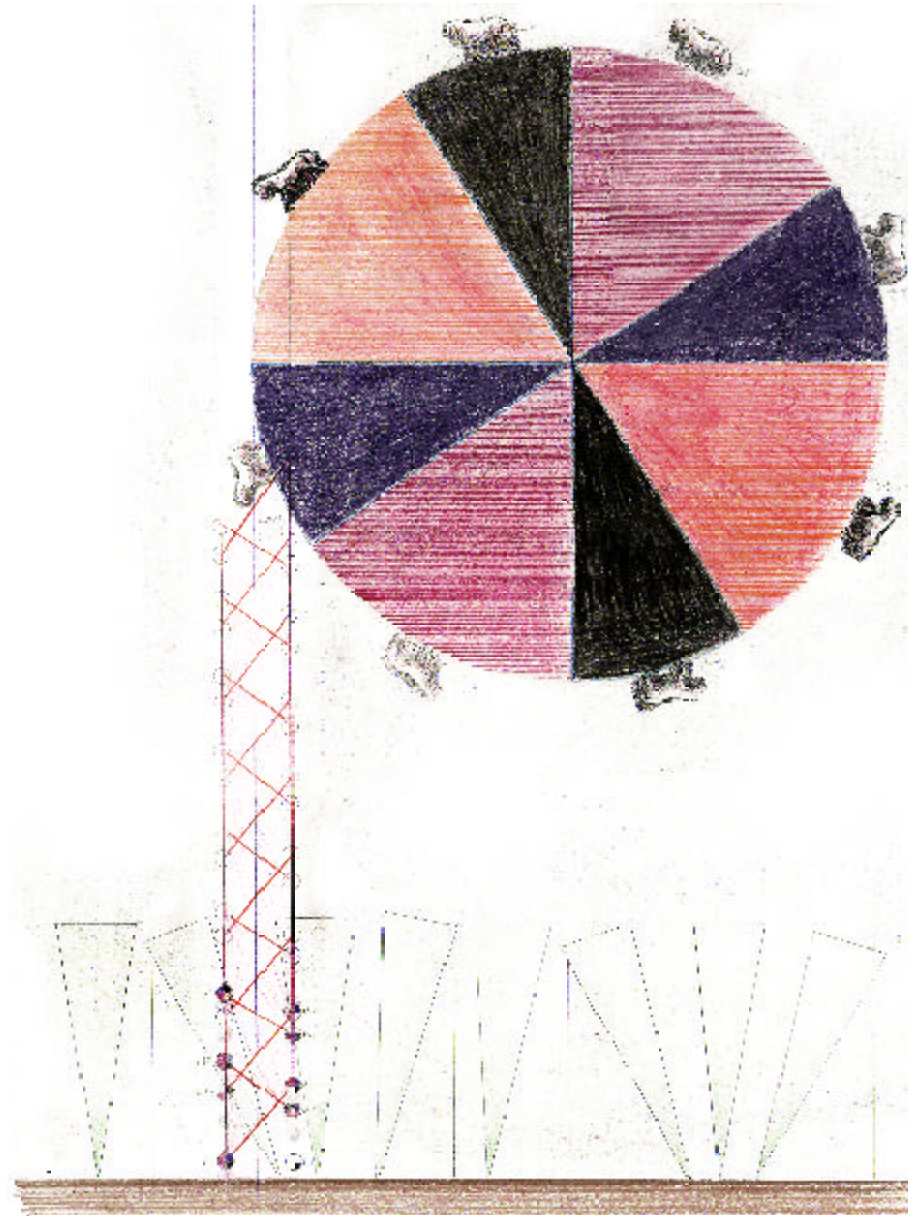
### Investigations of Movement along a path of travel

Motion and anatomical movements as shown by Etienne-Jules Marey. The hoof placement accounts for the geometry of the worn path in the previous photograph.



### Investigations of Movement along a path of travel

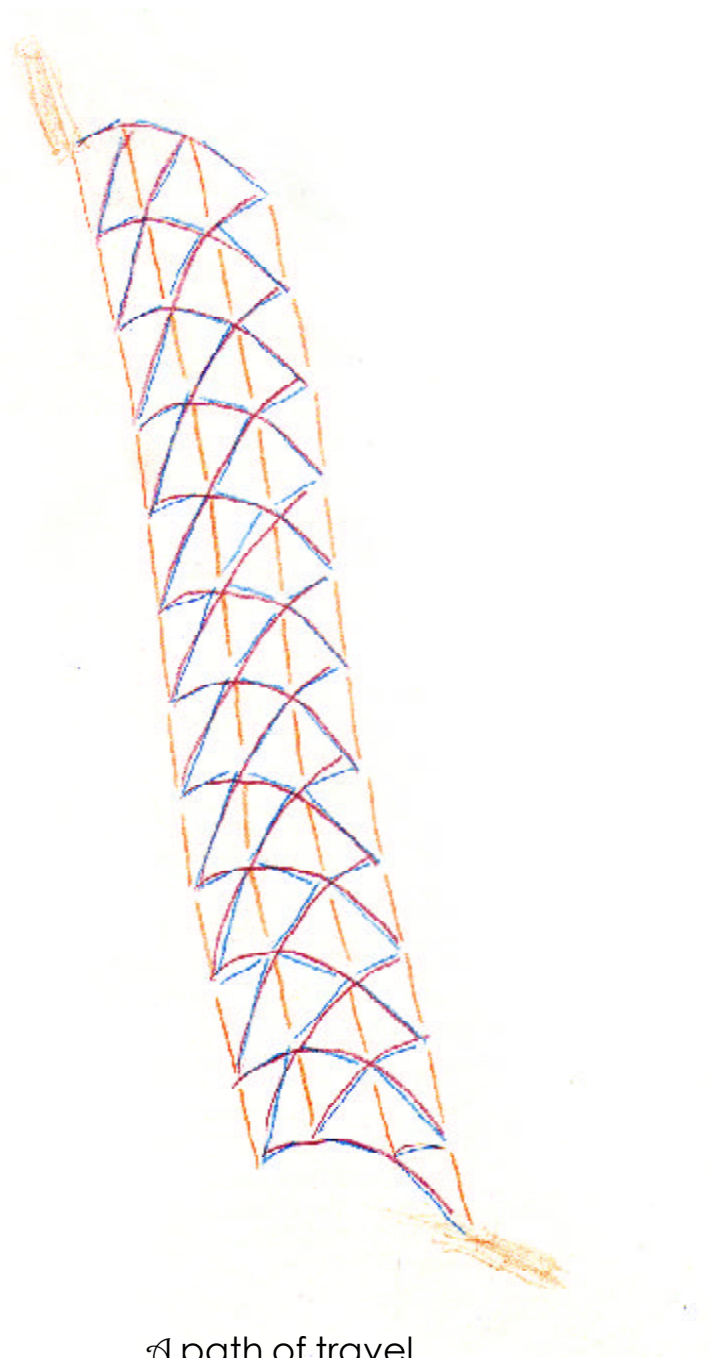
The lateral movements of the horse's anatomy are equaled by horizontal movements in the spine of the horse. The points represented by the hips and shoulders create circular paths in space.



### Investigations of Movement along a path of travel

This diagram shows the placement of the horse's hooves as it walks in relation to its shifting weight. As the horse walks, its weight shifts from side to side and is supported by three legs then two legs and then three again. As it walks, this pattern creates the side to side motion seen in Etien -Julse's images and in the path seen in the photograph.





↻ path of travel

A geometry of construction