

TRASHAWAY



Presented by Group 7 :

Dhruvi Jariwala
Vatsavayi

Maanasa

Maneesha Venigalla
Robertson

Matthew

Tejaswi Gundimeda

Description



- A user-friendly, socially responsible application.
- Achieves better health with cleaner environment.
- Rewards active users.



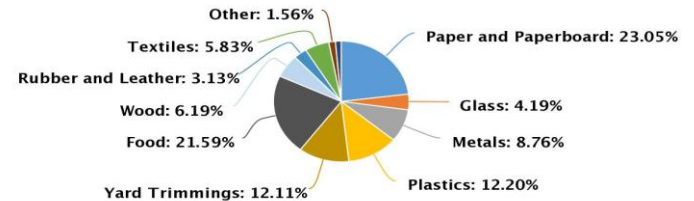
Context and background



- As per EPA, 292.4 million tons of waste is generated annually in the USA.
- Ignorance due to lack of convenient means.
- Motivation - Cleaner and greener environment.

Total MSW Generated by Material, 2018

292.4 million tons



Project Goals



Cleaner Environment



Motivate users to participate more



Organize events



User-friendly UI



PWA Support

Target Users



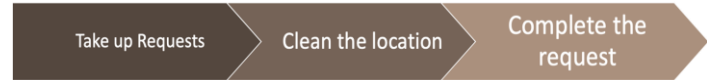
- Cleaning NGOs
- Environmentalists
- Teachers/Students - community service



Main Functions



- Organization Dashboard



- Report Trash as Guest / Registered User



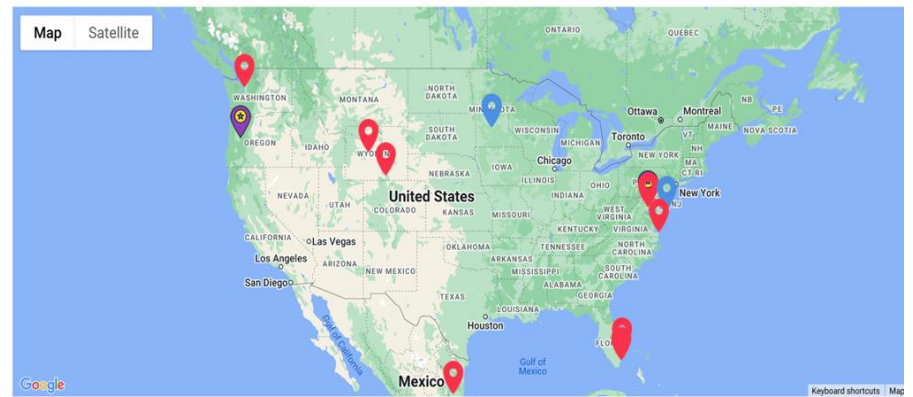
- Organize / Join Clean Up Events



Unique Features



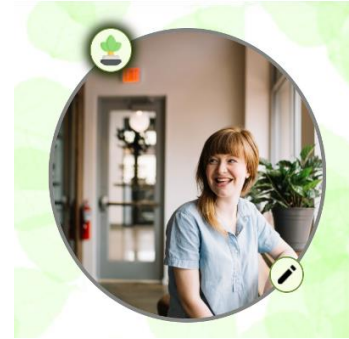
Display all requests with their status



Unique Features



Badges and Coupons for users



Unique Features



Lighthouse report

https://rashaway.discovery.cs.vt.edu/

PWA

These checks validate the aspects of a Progressive Web App. [Learn more](#)

- INSTALLABLE
 - Web app manifest and service worker meet the installability requirements
- PWA OPTIMIZED
 - Registers a service worker that controls page and `start_url`
 - Configured for a custom splash screen
 - Sets a theme color for the address bar
 - Content is sized correctly for the viewport
 - Has a `<meta name="viewport">` tag with `width` or `initial-scale`
 - Provides a valid `apple-touch-icon`
 - Manifest has a maskable icon

Build - IDEs



Front end - Visual Studio Code



Backend - IntelliJ



API Testing - Postman



Scrum - GitLab



Design choices



- React Javascript
- Fetch and Axios
- Java Springboot
- Postgresql
- Kubernetes

Difficulties

- API calls
- CORS Issue
- API Integration
- Cloud deployment
- Notification System - Time constraint



Lessons Learned



Plan Sprints with More Details

Account for Learning Time

Test Integrations Earlier

DEMO

THANK YOU

QUESTIONS ?