

FIGURE 4-7. Bolt (#1) force vs. applied moment for four-bolt extended unstiffened SAC specimen.

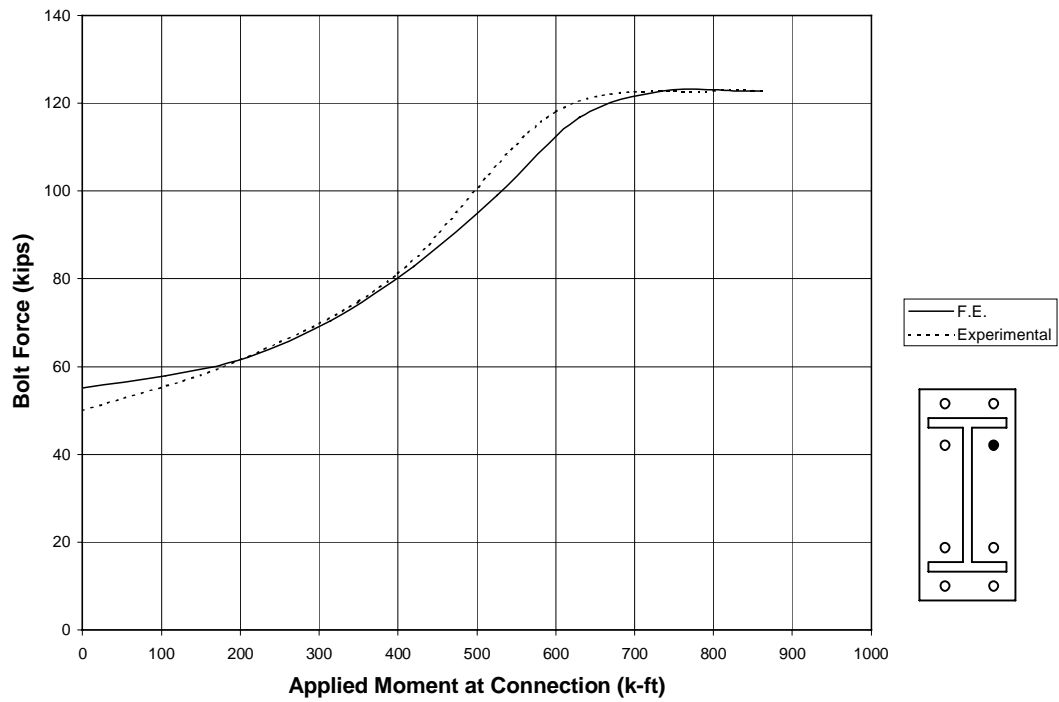


FIGURE 4-8. Bolt (#2) force vs. applied moment for four-bolt extended unstiffened SAC specimen.

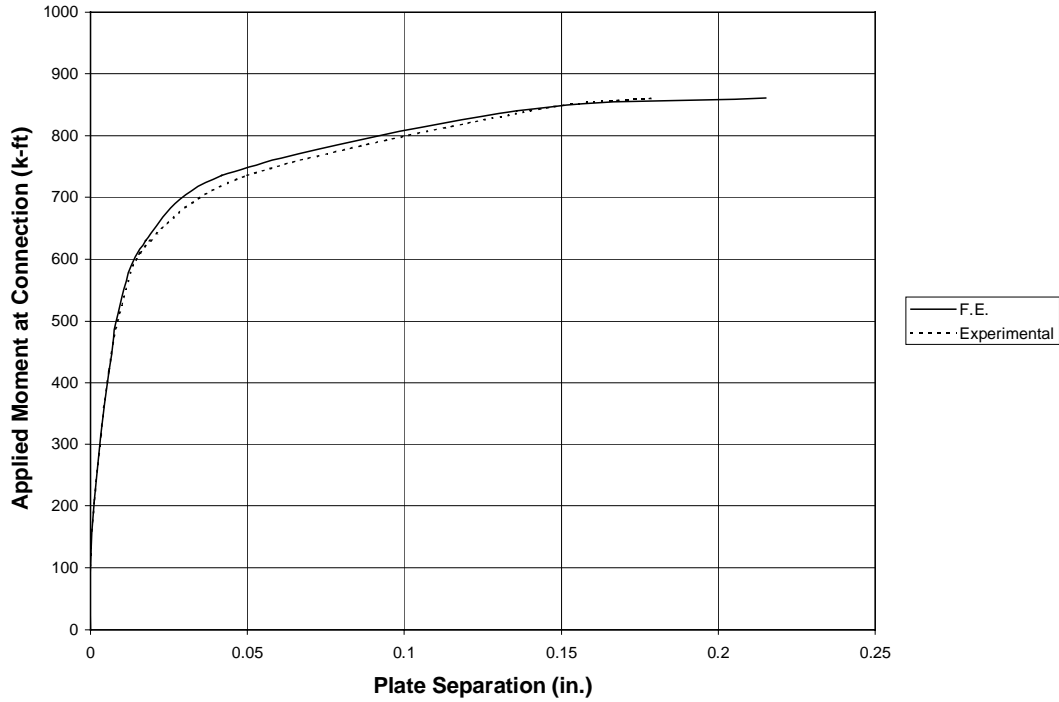


FIGURE 4-9. Applied moment vs. plate separation for four-bolt extended unstiffened SAC specimen.

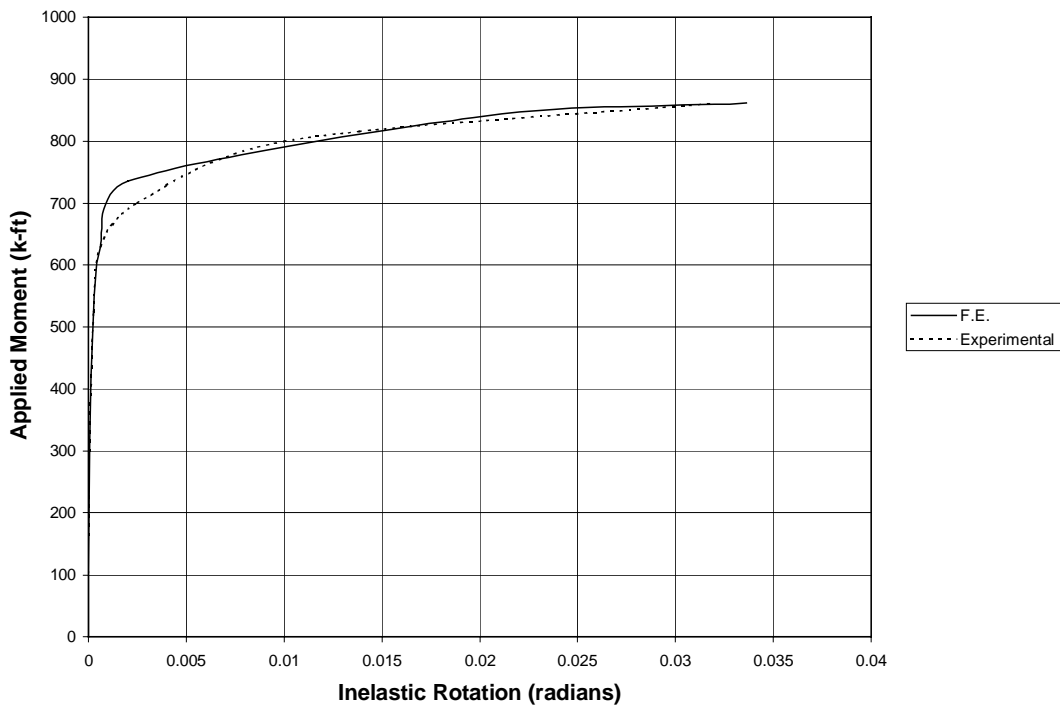


FIGURE 4-10. Applied moment vs. inelastic rotation for four-bolt extended unstiffened SAC specimen.

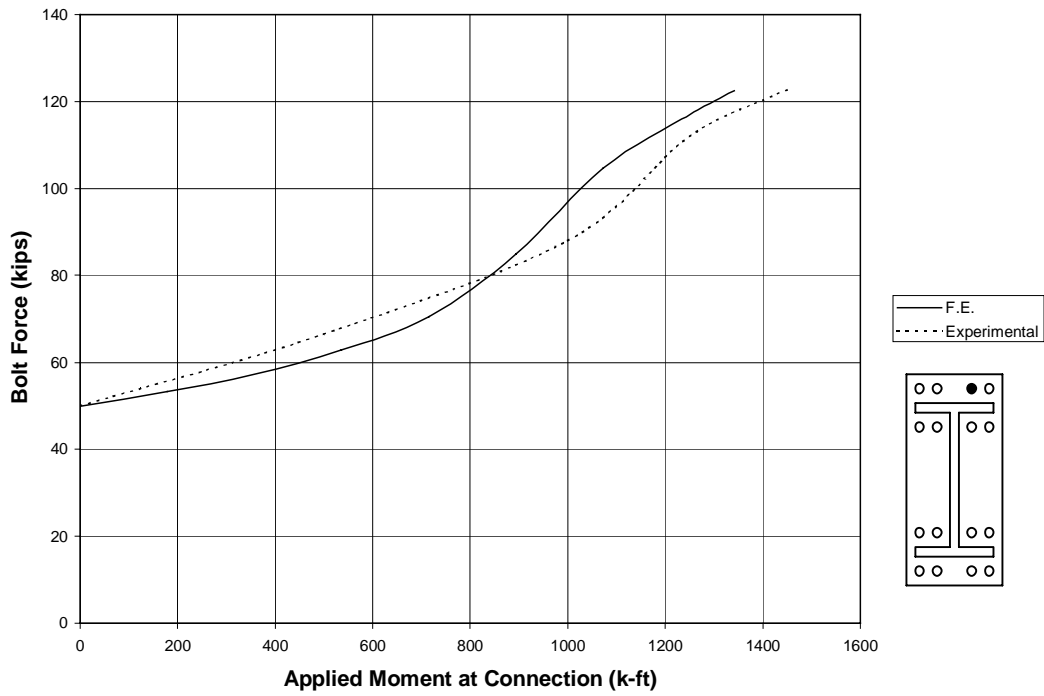


FIGURE 4-11. Bolt (#1) force vs. applied moment for four-bolt wide SAC specimen.

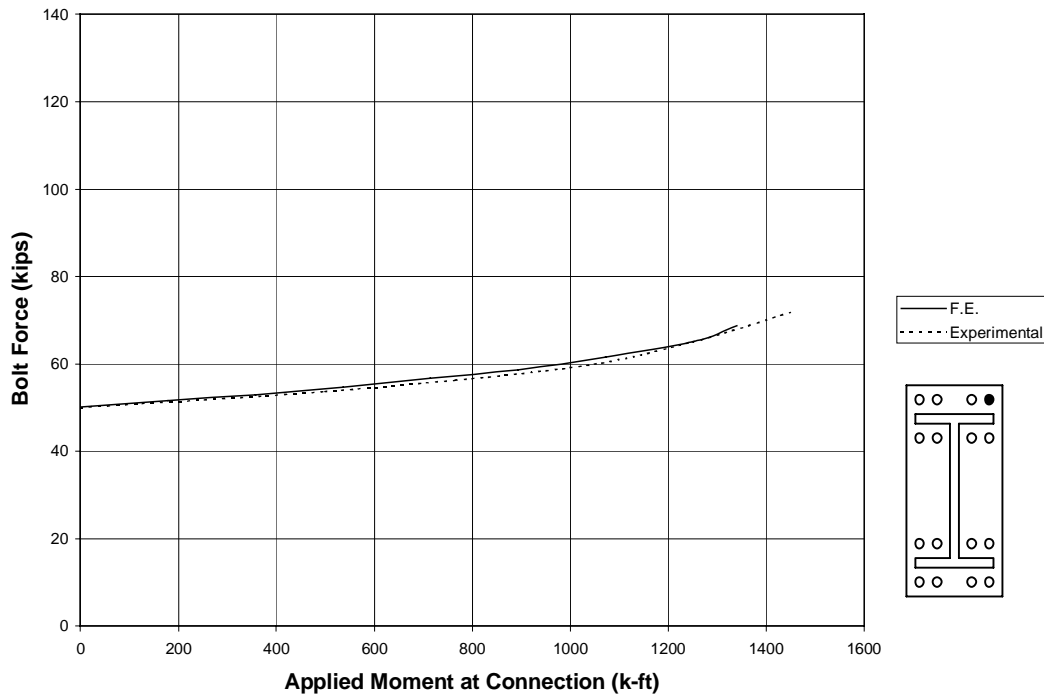


FIGURE 4-12. Bolt (#2) force vs. applied moment for four-bolt wide SAC specimen.

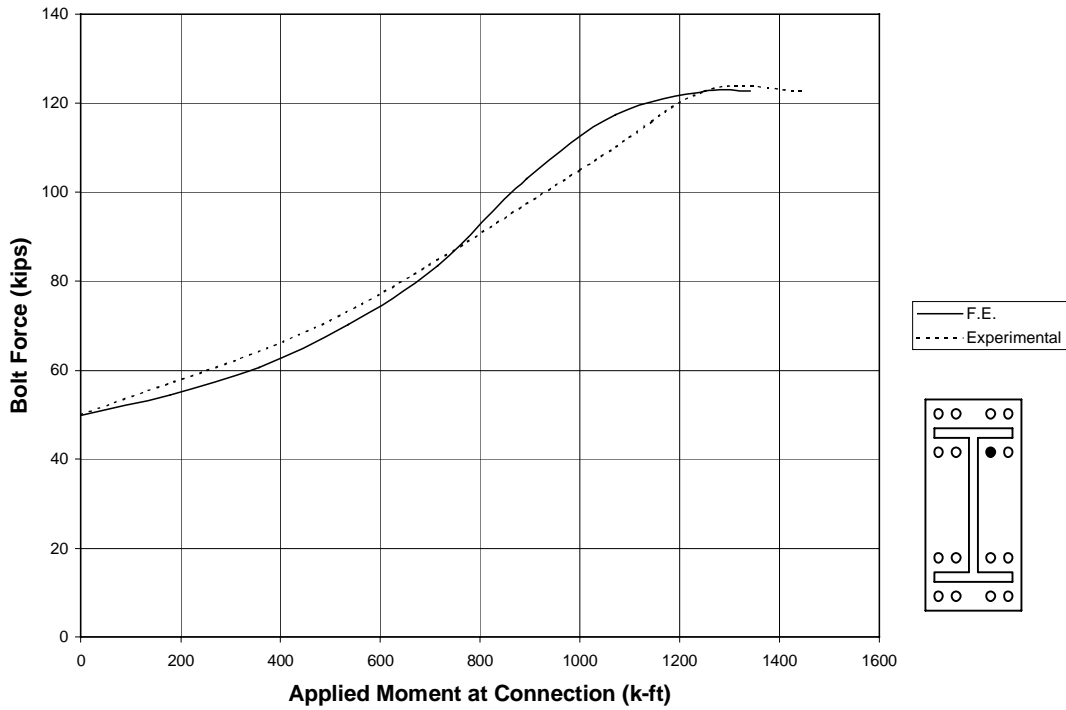


FIGURE 4-13. Bolt (#3) force vs. applied moment for four-bolt wide SAC specimen.

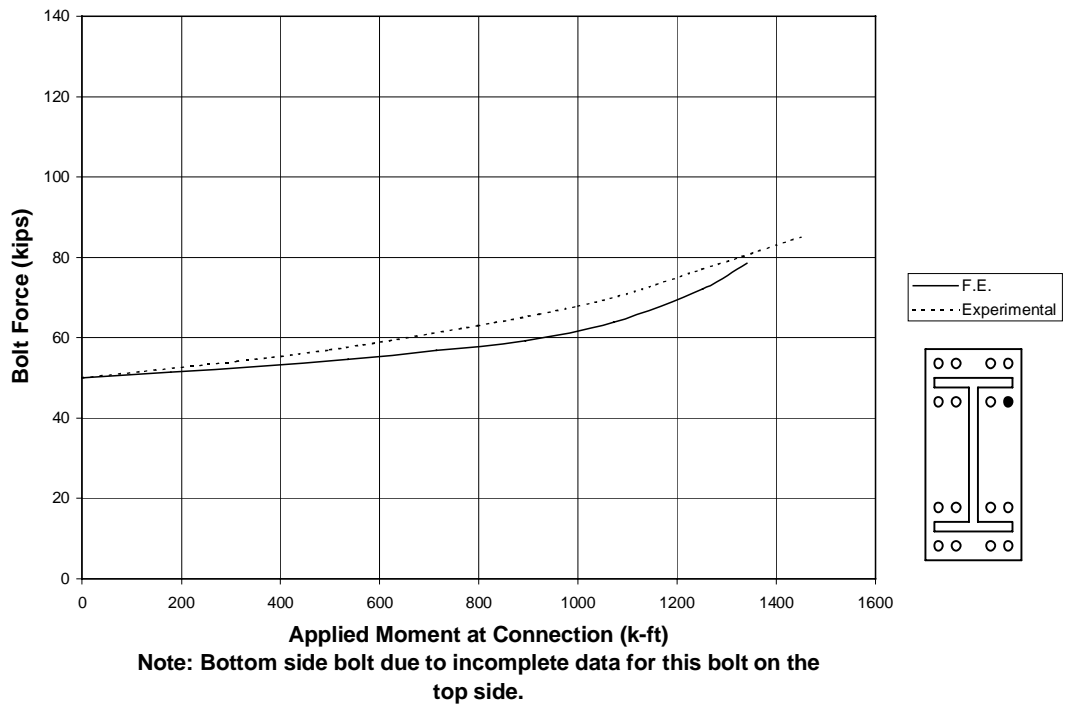


FIGURE 4-14. Bolt (#4) force vs. applied moment for four-bolt wide SAC specimen.

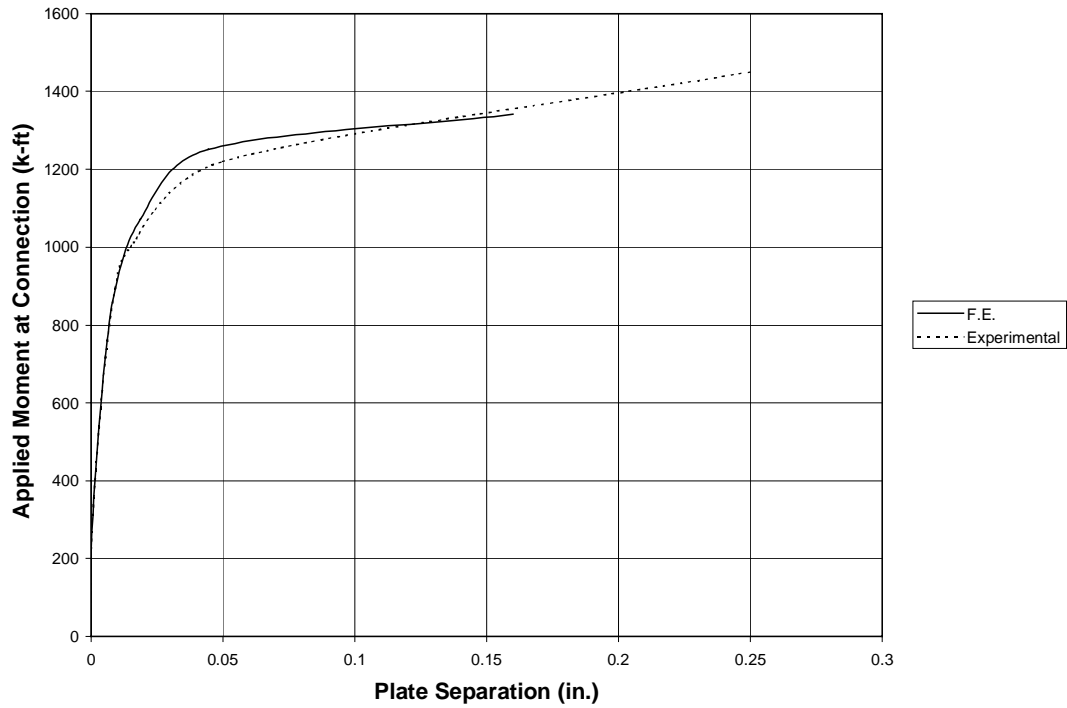


FIGURE 4-15. Applied moment vs. plate separation for four-bolt wide SAC specimen.

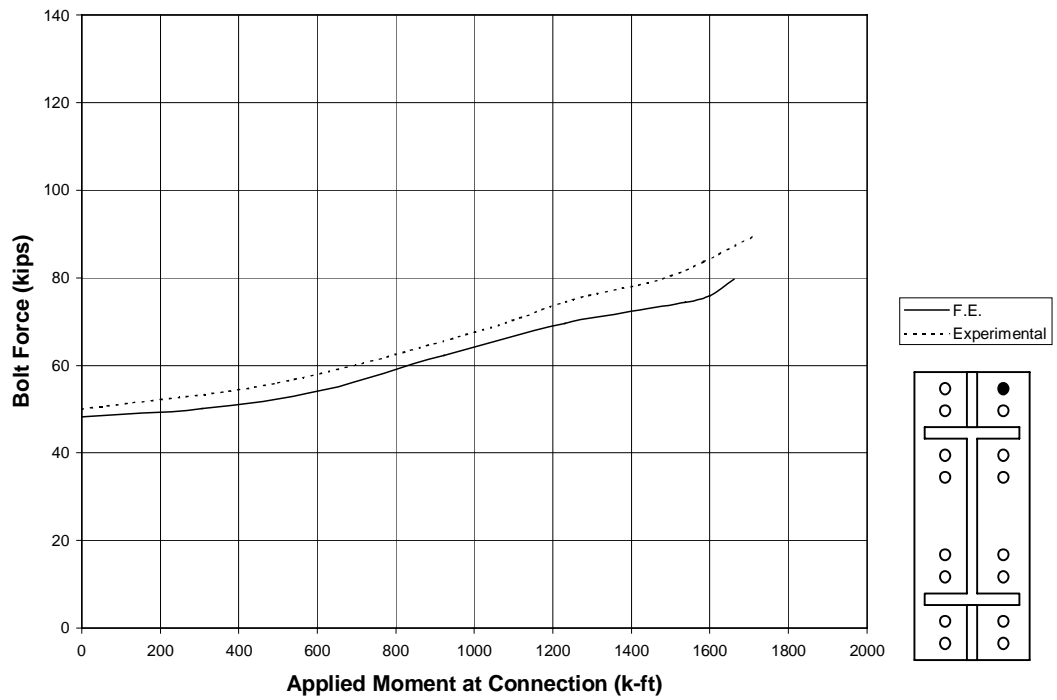


FIGURE 4-16. Bolt (#1) force vs. applied moment for eight-bolt extended stiffened SAC specimen.

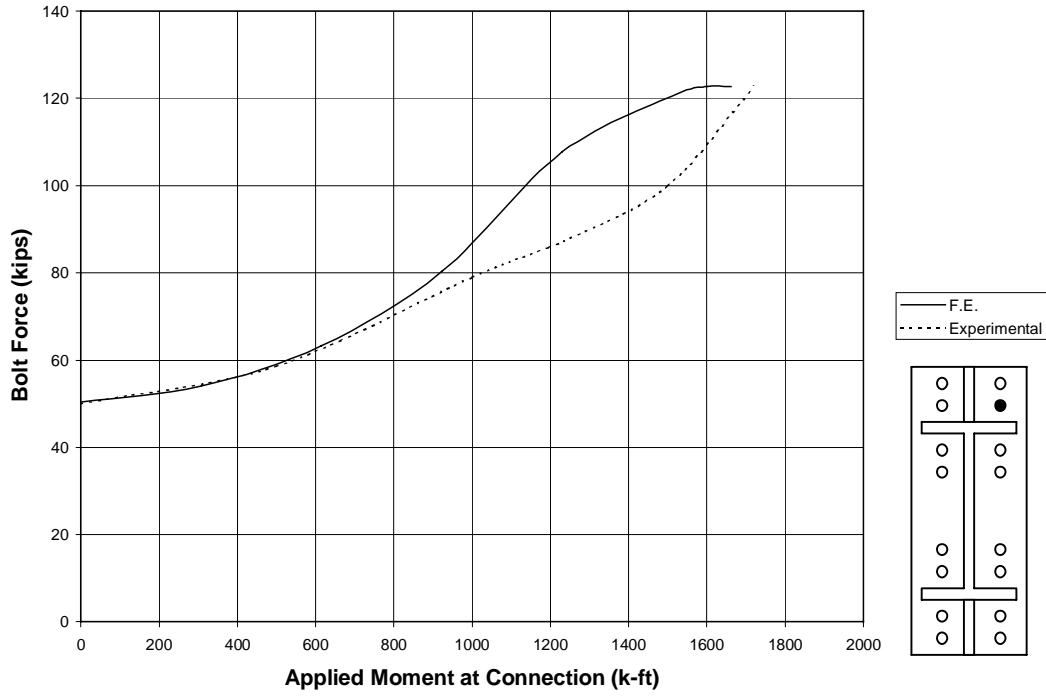


FIGURE 4-17. Bolt (#2) force vs. applied moment for eight-bolt extended stiffened SAC specimen.

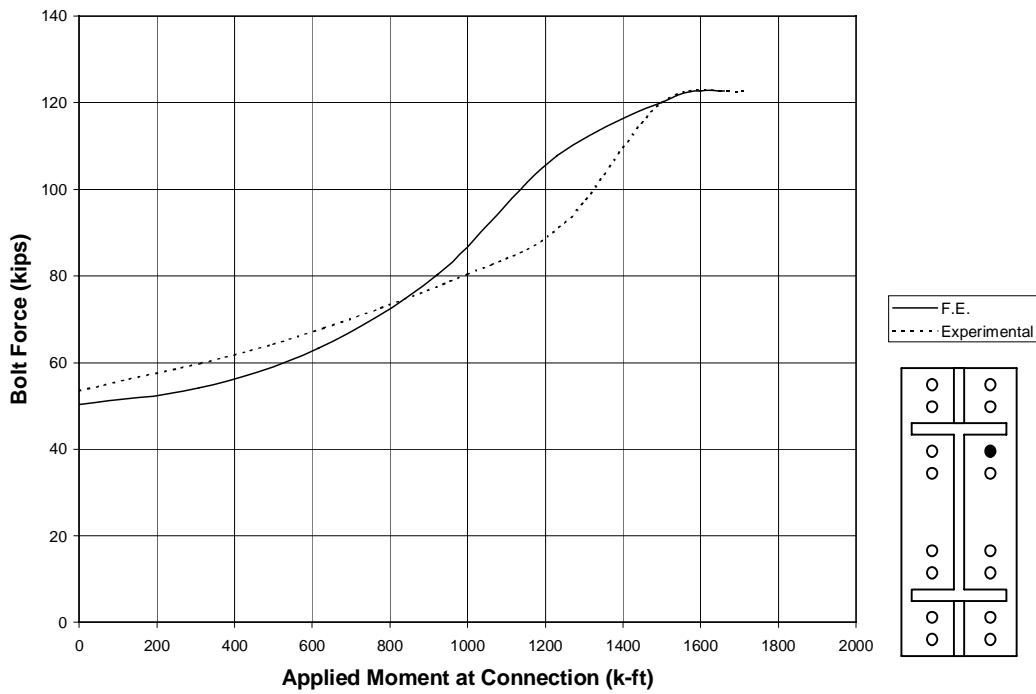


FIGURE 4-18. Bolt (#3) force vs. applied moment for eight-bolt extended stiffened SAC specimen.

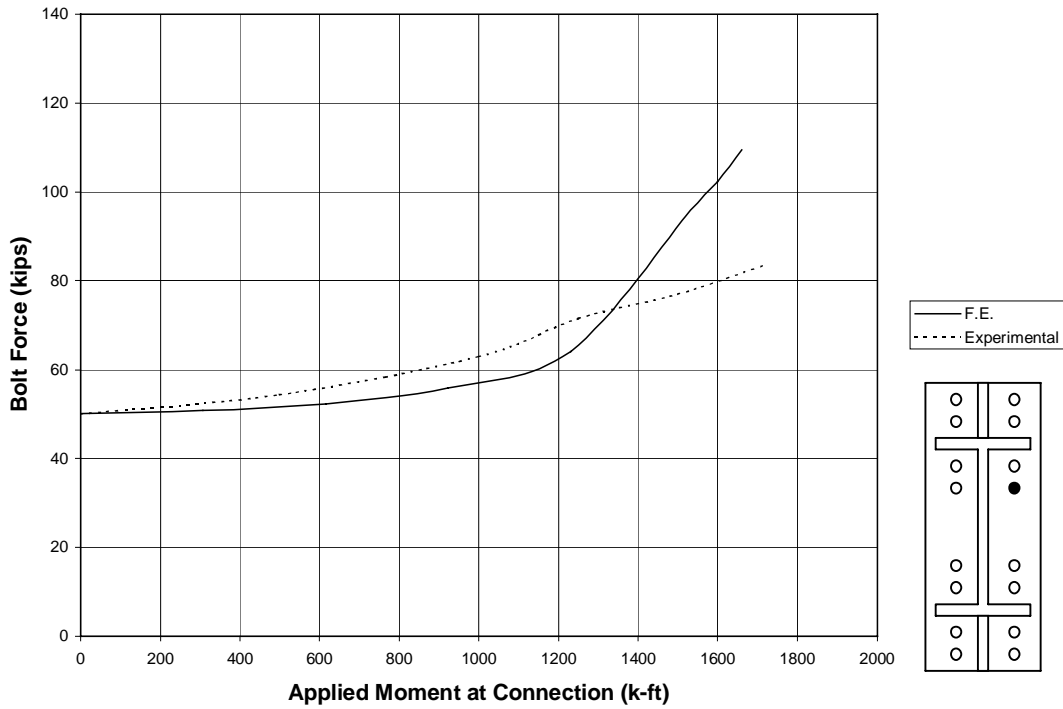


FIGURE 4-19. Bolt (#4) force vs. applied moment for eight-bolt extended stiffened SAC specimen.

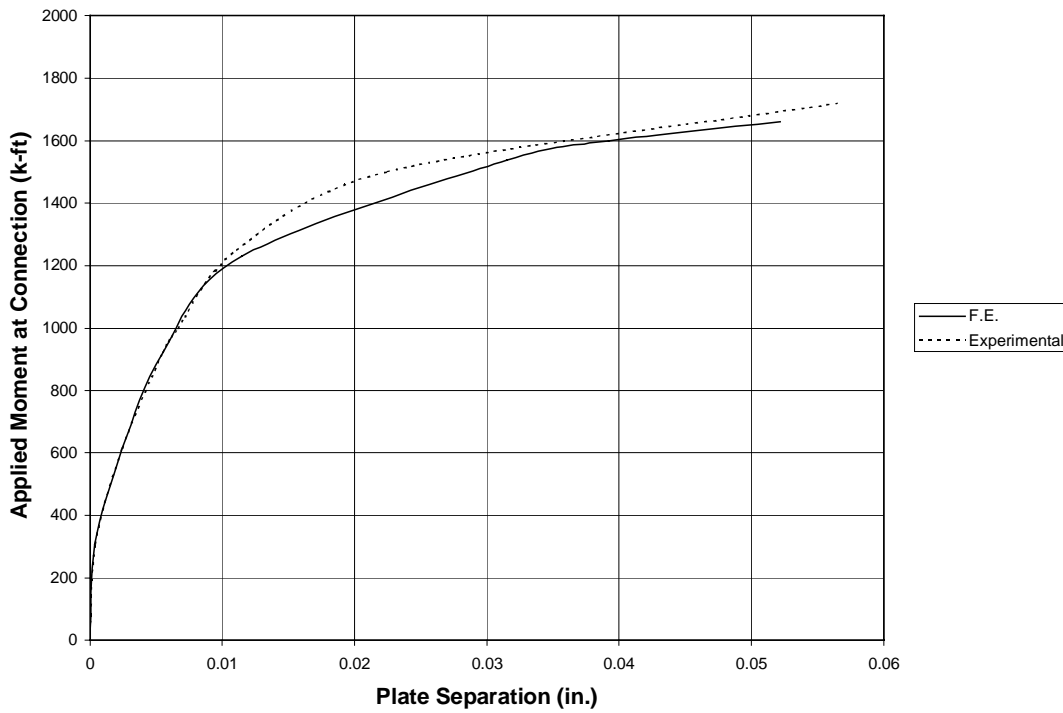


FIGURE 4-20. Applied moment vs. plate separation for eight-bolt extended stiffened SAC specimen.

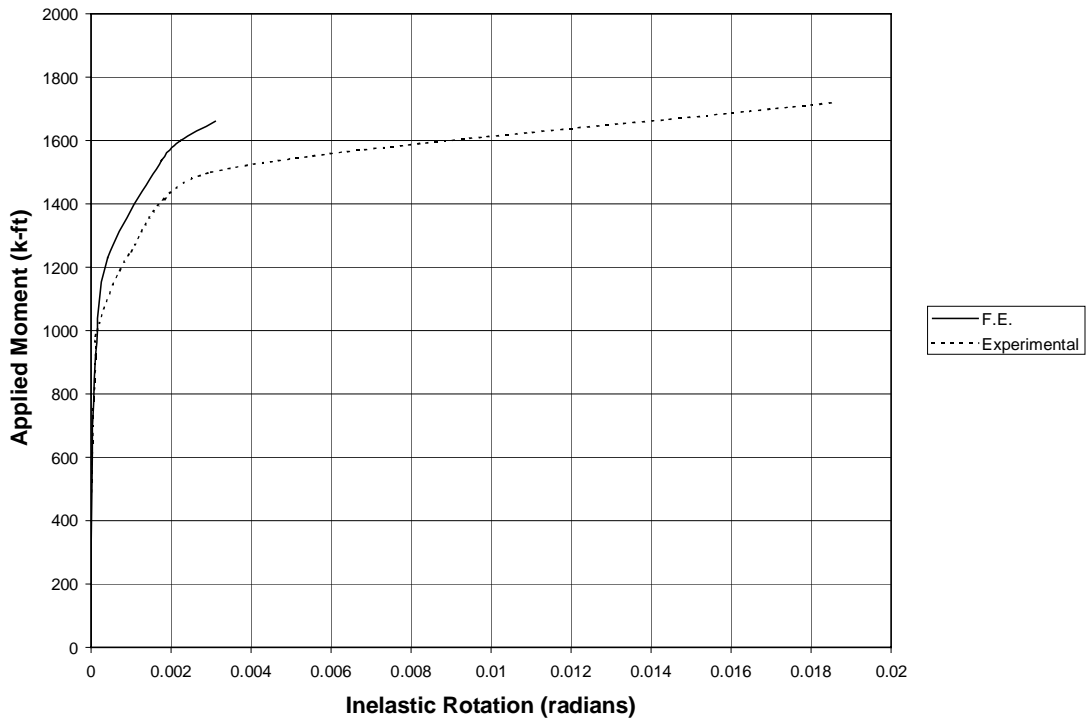


FIGURE 4-21. Applied moment vs. inelastic rotation for eight-bolt extended stiffened SAC specimen.