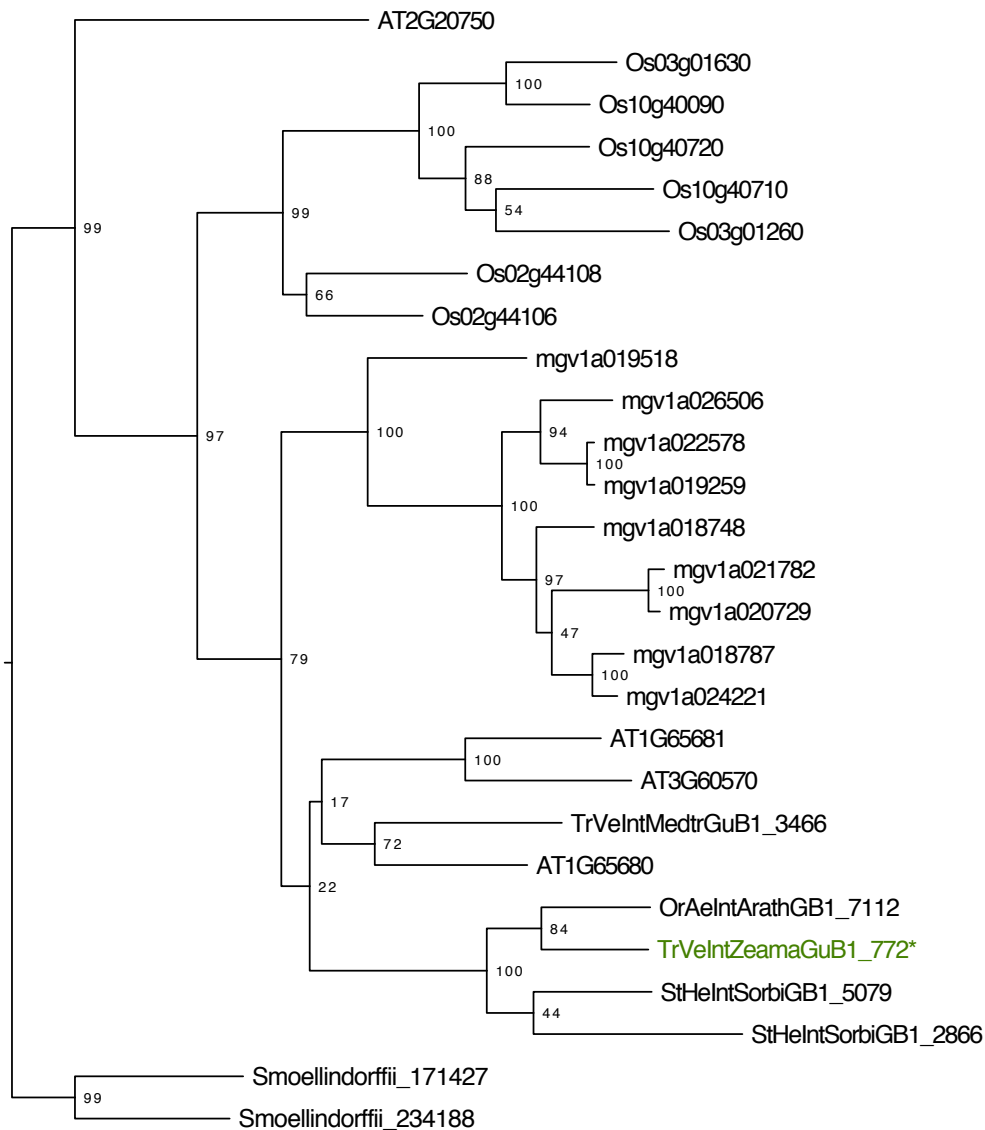


Additional file 11: Figure S6. RaxML analysis of A: *Triphysaria* beta expansin gene TvEXPB1 (TrVeIntZeamaGB1_772*, green text), and B: alpha expansin gene TvEXPA4 (TrVeIntMedtrGB1_11*, green text). Bootstrap proportions are given above each node. **Taxon abbreviations for A:** *Arabidopsis thaliana* (AT), *Oryza sativa* (Os), *Mimulus guttatus* (Mg), *Triphysaria versicolor* (TrVe), *Striga hermonthica* (StHe), *Phelipanche* (=Orobanche) *aegyptiaca* (OrAe), *Selaginella moellendorffii* (Smoellendorffii). **Taxon Abbreviations for B:** *Oryza sativa* (Os), *Sorghum bicolor* (Sb), *Striga hermonthica* (StHe), *Phelipanche* (=Orobanche) *aegyptiaca* (OrAe), *Triphysaria versicolor* (TrVe), *Carica papaya* (Carpa), *Populus trichocarpa* (Poptr), *Medicago truncatula* (Medtr), *Vitis vinifera* (Vitvi), *Arabidopsis thaliana* (AT), *Selaginella moellendorffii* (Selmo), *Physcomitrella patens* (Phypa).

A



B

