

Evaluation of Eye Injury Risk from Consumer Fireworks

Vanessa Alphonse and Andrew Kemper
Virginia Tech – Wake Forest University
Center for Injury Biomechanics

ABSTRACT

Eye injuries affect approximately two million people annually. Various experimental studies have been performed to evaluate potentially injurious conditions from blunt objects using animal and human cadaver eyes. Experimental data from these studies have been used to develop injury risk curves to predict eye injuries based on projectile parameters such as kinetic energy and normalized energy. Recently, intraocular pressure (IOP) has been correlated to injury risk, which allows eye injuries to be predicted if projectile characteristics are unknown. Additionally, the measurement of IOP and the association of IOP to injury risk in experimental tests has opened up the field to studying eye injury mechanisms from overpressure. The current manuscript presents recent experimental tests that evaluated the response of human cadaver eyes exposed to firework overpressure. Consumer fireworks serve as a model of low level blast, and provides a foundation to studying higher blast overpressures (i.e., that would be observed in military combat). Although some studies state that eye injury can result solely from primary blast (overpressure), there is no empirical evidence in the literature to support this. Future experimental studies should be conducted to assess this statement.

Key Words: Firework, Pressure, Eye, Injury, Risk

INTRODUCTION

Annually, approximately two million people in the United States suffer from eye injuries that require treatment [1]. The most common sources of eye injuries include automobile accidents [2-13], sports-related impacts [14-17], consumer products [18-27], and military combat [28-31]. These events result in nearly 500,000 cases of lost eyesight in the United States each year [32]. These injuries affect quality of life and are expensive to treat, given an estimated annual cost of \$51.4 billion associated with adult vision problems in the United States [33,34]. Based on data collected between December 31, 1991 and December 31, 2010, the U.S. Consumer Product Safety Commission (CPSC) estimated 9855 persons are treated in an emergency department for fireworks-related injuries annually, and that 2141 of these injuries are specifically related to the eye [70]. Firework-related injuries in the United States, especially in the month surrounding the Fourth of July, are prevalent among children and adolescents [71-73]. The eye remains the most frequently injured body part in these incidents, accounting for nearly a quarter of all reported firework-related injuries [71]. Bottle rockets and firecrackers comprise nearly 50% of these injuries [71]. Despite national laws that restrict the size of consumer fireworks, individual state laws are inconsistent with regard to the purchase and use of fireworks [74].

Firework explosions produce a sharp increase in ambient pressure (overpressure) and temperature followed by an expulsion of material. Improper preparation and ignition of fireworks displays as well as and inadequate viewing distances pose unique injury risks to the

user and bystanders. Much of the current firework-related literature assesses the injurious effects of projected materials to the eye [71,75,76]. The effect of projected material is not inconsequential; previous research calculated 100% injury risk for several eye injuries from blunt projectiles [62,63,68,77]. Although some studies state that ocular injuries such as globe rupture and conjunctival hemorrhage can be caused by blast overpressure, there is no clear evidence that directly supports this [78-80]. The critical question is whether overpressure from fireworks can cause ocular injury or if injuries are caused solely by projected material. Previous research has documented various etiologies of eye injuries, studied parameters that affect eye injury risk, and developed computational and physical models of the eye that can assess eye injury risk during various loading schemes [35-69]. Recently, intraocular pressure (IOP) was correlated IOP to eye injury risk [25]. Therefore, the purpose of this research is to measure IOP of enucleated cadaveric eyes during explosions similar to consumer fireworks and assess ocular injuries sustained in order to more fully understand the effect of blast overpressure on the eye

METHODS

Six human eyes were procured from the North Carolina Eye Bank (Winston Salem, NC, USA) and stored in refrigerated saline. The time interval between death and testing did not exceed 55 days, which was previously shown to not affect eye rupture pressures [12]. As tissue was never exposed to a freeze-thaw cycle, globe integrity was preserved. A miniature pressure sensor (Model 060S, 689 kPa, Precision Measurement Company, Ann Arbor, MI, USA) that had a frequency response of 10 kHz and a small tube were inserted through the optic nerve into the vitreous fluid and secured in place. A 25 gauge needle was inserted in the small tube and attached to lactated ringer's solution to provide normal human physiologic IOP of 1.993 kPa (14.95 mmHg) throughout the test [25,64,81]. Eyes were examined for injury before and after each test to ensure globe integrity was maintained. A fluorescein dye was used to visualize any corneal abrasions. As testing occurred in the open air, eyes were periodically rinsed with saline to maintain tissue hydration.

Firework tests were performed on human cadaver eyes using a custom test setup designed to measure IOP and overpressure. The test setup consisted of a metal frame that suspended the eye approximately 1 m from the ground. A total of four pressure sensors (Model 113B21, 1379 kPa, PCB Piezotronics, Depew, NY, USA) were mounted around the eye (**Figure 1**). These pressure sensors had a resonance frequency response greater than 500 kHz and measured frequency content up to 100 kHz without distortion. They were designated as "total" or "static" sensors based on their orientation [82]. Total (face-on) sensors measured both the dynamic and static components of the overpressure wave, and were mounted such that the sensing element was perpendicular to the direction of wave propagation. Static (side-on) sensors measured the static component of the overpressure wave, and were mounted such that the sensing element was parallel to the direction of wave propagation. The sensor array consisted of a total overpressure sensor (total) and a static overpressure sensor (static left) adjacent to the eye, and two static overpressure sensors (static right 1, static right 2) mounted 3.0 cm apart in a polycarbonate airfoil-shaped block (**Figure 1**).

The temporal difference between peak overpressures measured by the two static overpressure sensors mounted in the airfoil-shaped block was used to determine the overpressure wave velocity. Rise time was calculated as the time interval between initiation of positive overpressure and the time at peak overpressure. Positive duration was calculated as the time interval between initiation of positive overpressure and the time when overpressure returned to

zero. Positive impulse was calculated using trapezoidal integration of the total pressure trace over the positive duration.

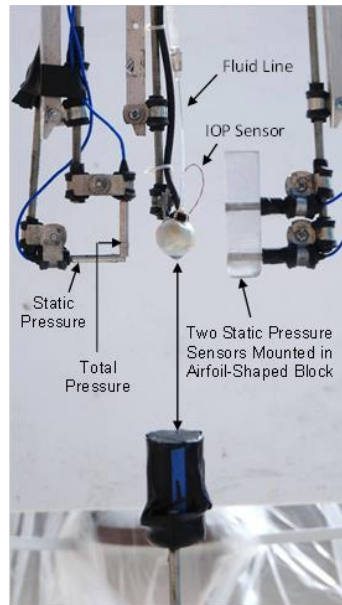


Figure 1. Close-up photograph of experimental test setup with a human cadaver eye.

Due to the large variability of consumer fireworks, this study implemented charges fabricated in house to simulate consumer fireworks in a controlled, repeatable manner. These charges consisted of cardboard tubes filled with 10 grams of Pyrodex® gunpowder that exploded perpendicular to the long axis of the tube. The 10 gram charges were fixed to a metal rod such that the center of the gunpowder was 22 cm, 12 cm, or 7 cm below the cornea. The rod was attached below the center of the gunpowder and did not obstruct the explosion. The long axis of the 10 gram charges was oriented parallel to the anterior-posterior axis of the eye. The three standoff distances were chosen to examine the effect distance has on peak overpressure. The test matrix was designed such that tests were conducted with decreasing distance from the cornea. The charge was offset 2.0 cm from the front of the cornea to minimize the amount of material projected towards the eye. Five commercially available fireworks (two bottle rockets, three firecrackers) were oriented and tested with the same conditions as the 10 gram charges, but without an eye, for comparison. The high incidence of injuries from firecrackers and aerial devices motivated the testing of both firecrackers and bottle rockets in the current study [22,83].

A data acquisition system (TDAS PRO, Diversified Technical Systems, Inc., Seal beach, CA, USA) collected data at 301887.0 Hz. The standard TDAS PRO anti-aliasing filter (4,300 Hz) was bypassed for this test series because the frequency content of the blast overpressure exceeded 4,300 Hz. However, the TDAS PRO sensor input modules (SIMs) have a bandwidth of 0-25 kHz which acts as a low-pass filter with a frequency cutoff of 25 kHz. All pressure data were zeroed immediately prior to the event. A Phantom v9.1 camera (Vision Research, Wayne, NJ, USA) was used to capture high speed video at 20,000 frames per second with a resolution of 256 x 192 pixels.

Injury risk was assessed for each human cadaver eye test using a two-step process. First, normalized energy was determined using the correlation between IOP and normalized energy developed from projectile testing conducted by Duma et al. (2012) [25]. The correlation for the

large aluminum rod (11.16 mm diameter) was used to best match the area of an unprotected eye that would be exposed to a firework explosion. Second, injury risk was determined using injury risk curves based on normalized energy as an injury predictor for hyphema, lens damage, retinal damage, and globe rupture. These injury risk functions were developed by Kennedy et al (2011) from analyzing a meta-analysis of over 250 eye impacts reported in the literature [63]. Various methods were tested for injury risk prediction accuracy and the final recommended risk functions employ survival analysis using the maximum likelihood method to estimate parameters.

Injury risk was assessed for each firecracker or bottle rocket test in a similar way, but with an additional step. As IOP was not measured for the firecracker and bottle rocket tests, peak total overpressure was used to determine peak anticipated IOP based on a linear correlation developed by Duma et al. (2012) [25]. The anticipated IOP was then used to determine injury risk.

RESULTS

A total of 18 charges were exploded at distances of 22 cm, 12 cm, or 7 cm from six cadaveric eyes. The resulting overpressure time histories show a steep rise to peak overpressure followed by a positive overpressure phase and subsequent negative overpressure phase that is indicative of a Freidlander waveform [79,80,82]. Peak IOP ranged between 11.3 - 46.7 kPa. Peak total overpressure and peak static overpressure ranged between 15.0 - 57.0 kPa and 14.5 - 52.3 kPa, respectively. Normalized energy ranged between 2.8 - 112.0 J/m². Peak IOP correlated to 0.0% injury risk for lens damage, retinal damage, and globe rupture, for all tests. Maximum injury risk for hyphema was 0.01%, which only occurred in three of the five 7 cm tests. Peak IOP (y, kPa) was linearly correlated to peak total overpressure (x, kPa) for the charges ($y = 0.46x + 12.97$, $R^2 = 0.5$).

A total of 18 commercial bottle rockets and 27 commercial firecrackers were exploded without an eye present. For the bottle rockets, peak total overpressure and peak static overpressure ranged between 14.0 - 82.6 kPa and 11.2 - 55.2 kPa, respectively. Normalized energy ranged between 46.2 - 123.0 J/m². Peak IOP correlated to 0.00% injury risk for lens damage, retinal damage, and globe rupture, and maximum injury risk for hyphema was 0.01%, which only occurred at the 7 cm distance for the bottle rocket tests. For the firecrackers, peak total overpressure and peak static overpressure ranged between 3.7 - 29.4 kPa and 3.4 - 19.4 kPa, respectively. Normalized energy ranged between 34.9 - 63.4 J/m². Peak IOP correlated to 0.00% injury risk for hyphema, lens damage, retinal damage, and globe rupture for the firecracker tests.

No globe ruptures or corneal lacerations were observed; however, minor corneal abrasions were observed. The abrasion size and pattern suggested injuries were sustained from unspent Pyrodex® being projected onto the eye during the event, which was confirmed with high speed video. As expected, more abrasions were observed as the standoff distance decreased.

DISCUSSION

This is the first study to investigate the effects of overpressure on the human eye. The overpressures recorded in the current study represent low blast energies. For comparison, a 10 gram charge of Pyrodex®, at 22 cm, 12 cm, and 7 cm standoff distances correspond to detonating 0.45 kg TNT at approximately 7.33 m, 4.57 m, and 3.05 m, respectively [82]. These comparisons are based on peak overpressure but not positive duration or positive impulse, which can also affect the standoff distance. Higher severity blast overpressures can be experienced

during military combat. Combat-related blast injuries are occurring more frequently with the increased use of explosives and improvised explosive devices (IEDs) in current military conflicts [31]. While the lung was once most susceptible to blast injury, the use of improved protective chest equipment has disproportionally left the face and eyes vulnerable to concomitant blast injuries³⁵. Approximately 5% (797) of all reported injuries sustained in the War in Iraq between 2003-2005 were eye injuries [76]. Studies have reported approximately 82% of all severe ocular injuries sustained during military combat are the result of munitions fragmentation [29,30]. Additionally, as many military explosives are buried, the risk of injury from projectiles would be expected to be much greater. It is unclear whether severe ocular injuries such as lens damage, retinal damage or globe rupture can be caused by higher blast overpressures. However, the relationship between peak IOP and peak total overpressure noted in this study indicates that an extremely large peak blast overpressure would be required to induce an IOP large enough to cause globe rupture, given an internal rupture pressure of 970 ± 290 kPa [25,64]. It is expected that more lethal corporal injuries resulting from such a large blast event would likely take precedence over potential ocular injuries. Further studies should be performed to evaluate the response and injuries resulting from higher blast overpressures. It should be noted that such a study would require the use of high energy explosives such as TNT, C4, or Comp-B.

Federal firework regulations currently limit the amount of pyrotechnic material in consumer fireworks to 50 mg for firecrackers and 130 mg for bottle rockets in order to minimize the risk of injury from these devices [84]. Individual state laws may additionally prohibit the distribution, purchase, and use of these devices to further decrease injury risk from misuse. Previous studies noted that states and countries banning the use of fireworks observed lower incidences of eye injuries due to fireworks [22,84]. As of June 1, 2011, only four states completely ban fireworks, including those allowed by CPSC regulations: Delaware, Massachusetts, New Jersey, and New York [74]. Therefore, it is expected that states without fireworks regulations will observe a higher incidence of fireworks-related injuries than states that regulate fireworks. Where fireworks are allowed, it is suggested that persons adhere to rules of their use and be familiar with the risks associated with projected material.

Future Directions in Experimental Blast Testing

Shock tubes and advanced blast simulators are often used to simulate open-field blast overpressures. A typical gas-driven shock tube schematic is shown in **Figure 2**. One advantage of using a shock tube or advanced blast simulator is that they simulate free-field blast overpressures without creating projected material, which is potentially injurious. This allows for the study of an isolated idealized shock wave and its potential injurious effects on the eye. Proper characterization of the shock wave dynamics in a shock tube or advanced blast simulator will yield data that can be used to compare the resulting shock wave data to free-field overpressures from high explosives.

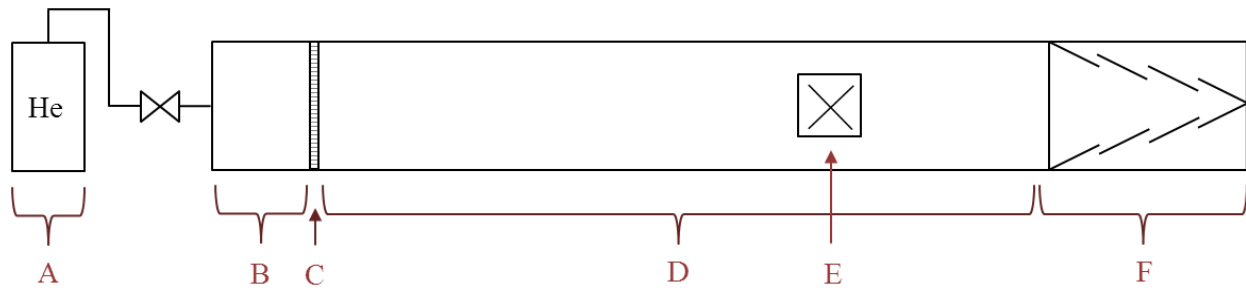


Figure 2. Gas-driven shock tube schematic. A. Compressed Helium Gas; B. Driver Section (high pressure region); C. Diaphragm ; D. Driven Section (low pressure region); E. Test Location; F. End Wave Eliminator

Porcine eye testing in an advanced blast simulator is currently being conducted to better understand the response of the eye to overpressures up to 30 psi. These tests are specifically designed to study the effect of orbit shape, measure peak overpressure and peak IOP, and quantify eye injury risk. Eyes are potted in a 10% gelatin solution to simulate the fat and musculature. Eyes are pressurized to physiologic pressure (14.95 mmHg) throughout the test using a gravity-fed system. A pressure sensor inserted through the optic nerve into the vitreous measures IOP throughout the event. High speed video is used to quantify tissue strain and global motion by tracking movement of a dot pattern printed on the sclera (**Figure 3**). Reflected and static overpressures are measured for each test. Using the pressure-time history, positive duration, positive impulse, and wave velocity are calculated for each test. This test series will yield experimental data that can be used to validate computational and physical models of the eye and will improve the understanding of how the eye responds to overpressure loading.

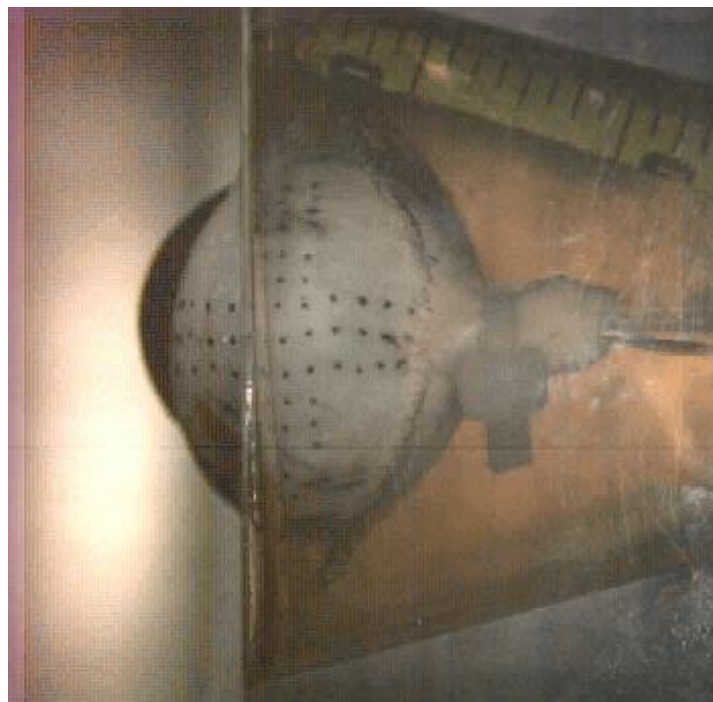


Figure 3. Photograph of porcine eye potted in a synthetic orbit and gelatin, in an advanced blast simulator.

Computational Models of the Eye for Blast Loading

A number of computational models of the eye have been developed [52-54,85,86]. Many of these are well validated for blunt impacts to the eye. However, with the increase in experimental eye testing for blast overpressure conditions, these models can be further validated for high-rate conditions such as blast. Weaver et al. developed and validated a computational model of the human eye using various orbit geometries and various projectile impacts to study the effect of anthropometry on injury risk parameters such as stress, strain, and pressure [52,53,54]. Bhardwai et al. developed a 3D fluid-structure computational model of blast loading on the human eye [85]. This model was used to assess reflected waves on facial features and indicated an increase in loading on and around the eye due to the pressure wave. High-stress and high-strain regions that could indicate injury risk for tissue failure were identified. Esposito et al. developed a finite element model of the human eye and its internal structures to assess primary blast loading on the eye [86]. This model was used to assess pressure wave propagation in the orbit of the eye and concluded that the complex shape of the orbit may generate a standing wave potentially harmful to the eye. Comparisons between isoletality and isopeak conditions indicated peak overpressure may affect eye injury risk more than positive duration. Reverse engineering was employed to determine and validate the parameters used in this model based on available experimental data. Experimental data could supplement this validation.

SUMMARY

This paper summarizes our most recent experimental test series that exposed human cadaver eyes to firework overpressure. This study quantifies the risk of eye injuries caused by firework overpressure. Serious eye injuries such as globe rupture were neither observed nor predicted by the peak IOP caused by the overpressure. However, minor corneal abrasions were observed after each test. High speed video analysis confirmed that the corneal abrasions were caused by projected unspent gunpowder. The extent of corneal abrasion depended on charge standoff distance. The combined presence of injuries caused by projected material and lack of injuries directly caused by overpressure indicates that serious eye injuries from the fireworks studied herein can be caused by projectiles and not overpressure. This research provides a foundation for future work related to eye exposure during higher overpressures. Currently, higher overpressures are being experimentally tested using shock tubes and advanced blast simulators. The response of the eye during these extremely high-rate loading schemes will provide critical insight to eye injuries related to overpressure as well as validation data for computational and physical models of the eye.

REFERENCES

- [1] McGwin G, Xie A, Owsley C. Rate of eye injury in the United States. *Arch Ophthalmol*. 2005;123:970-976.
- [2] Fukagawa K, Tsubota K, Kimura C, Hata S, Mashita T, Sugimoto T, Oguchi Y. Corneal endothelial cell loss induced by air bags. *Ophthalmology*. 1993;100(12).
- [3] Duma SM, Kress TA, Porta DJ, Woods CD, Snider JN, Fuller PM, Simmons RJ. Air bag-induced eye injuries: a report of 25 cases. *J Trauma*. 1996;41(1):114-119.
- [4] Duma SM, Kress TA, Porta DJ, Simmons RJ, Alexander CL, Woods CD. Airbag-induced eye injuries: experiments with *in situ* cadaver eyes. *Biomed Sci Instrum*. 1997;33:106-111.
- [5] Duma SM, Kress TA, Porta DJ, Simmons RJ, Alexander CL. An experimental study of airbag impact to the orbit using an instrumented Hybrid III headform. *Biomed Sci Instrum*. 1997;33:59-64.
- [6] Kisielewicz LT, Kodama N, Ohno S, Uchio E. Numerical prediction of airbag caused injuries on eyeballs after radial keratotomy. Paper presented at: SAE International Congress and Exposition, 1998; Detroit, Michigan.
- [7] Duma SM, Crandall JR. Eye injuries from air bags with seamless module covers. *J Trauma*. 2000;48(4):786-789.
- [8] Duma SM, Jernigan MV, Stitzel JD, Herring IP, Crowley JS, Brozoski FT, Bass CR. The effect of frontal airbags on eye injury patterns in automobile crashes. *Arch Ophthalmol*. 2002;120(11):1517-1522.
- [9] Power ED, Stitzel JD, Duma SM, Herring IP, West RL. Investigation of ocular injuries from high velocity objects in an automobile collision. SAE Technical Paper 2002-01-0027. DOI:10.4271/2002-01-0027.
- [10] Duma SM, Jernigan MV. The effects of airbags on orbital fracture patterns in frontal automobile crashes. *Ophthal Plast Reconstr Surg*. 2003;19(2):107-111.
- [11] Hansen GA, Stitzel JD, Duma SM. Incidence of elderly eye injuries in automobile crashes: the effects of lens stiffness as a function of age. *Annu Proc Assoc Adv Automot Med*. 2003;47:147-163.
- [12] Kennedy EA, Voorhies KD, Herring IP, Rath AL, Duma SM. Prediction of severe eye injuries in automobile accidents: static and dynamic rupture pressure of the eye. *Annu Proc Assoc Adv Automot Med*. 2004;48:165-179.
- [13] Duma SM, Rath AL, Jernigan MV, Stitzel JD, Herring IP. The effects of depowered airbags on eye injuries in frontal automobile crashes. *Am J Emerg Med*. 2005;23(1):13-19.
- [14] Vinger PF, Sparks JJ, Mussack KR, Dondero J, Jeffers JB. A program to prevent eye injuries in paintball. *Sports Vision*. 1997;3:33-40.
- [15] Vinger PF, Duma SM, Crandall JR. Baseball hardness as a risk factor for eye injuries. *Arch Ophthalmol*. 1999;117:354-358.
- [16] Rodriguez JO, Lavina AM. Prevention and treatment of common eye injuries in sports. *Am Fam Physician*. 2003;67:1481-1488.
- [17] Kennedy EA, Ng TP, McNally C, Stitzel JD, Duma SM. Risk functions for human and porcine eye rupture based on projectile characteristics of blunt objects. *Stapp Car Crash J*. 2006;50:651-671.
- [18] Berger RE. A model for evaluating the ocular contusion injury potential of propelled objects. *J Bioeng*. 1978;2(3-4):345-358.

- [19] McKnight SJ, Fitz J, Giangiacomo J. Corneal rupture following keratotomy in cats subjected to BB gun injury. *Ophthalmic Surg.* 1988;19(3):165-167.
- [20] Fleischhauer JC, Goldblum D, Frueh BE, Koerner F. Ocular injuries caused by airsoft guns. *Arch Ophthalmol.* 1999;117:1437-1439.
- [21] Endo S, Ishida N, Yamaguchi T. The BB gun is equivalent to the airsoft gun in the Japanese literature. *Arch Ophthalmol.* 2000;118(5):732.
- [22] Kuhn FC, Morris RC, Witherspoon DC, Mann L, Mester V, Módis L, Berta A, Bearden W. Serious fireworks-related eye injuries. *Ophthalmic Epidemiol.* 2000;7:139-148.
- [23] Endo S, Ishida N, Yamaguchi T. Tear in the trabecular meshwork caused by an airsoft gun. *Am J Ophthalmol.* 2001;131(5):656-657.
- [24] Kennedy EA, Ng TP, Duma SM. Evaluating eye injury risk of airsoft pellet guns by parametric risk functions. *Biomed Sci Instrum.* 2006;42:7-12.
- [25] Duma SM, Bisplinghoff JA, Senge DM, McNally C, Alphonse VD. Evaluating the risk of eye injuries: intraocular pressure during high speed projectile impacts. *Curr Eye Res.* 2012;37(1): 43-49.
- [26] Alphonse VD, Kemper AR, Strom BT, Beeman SM, Duma SM. Exposure to fireworks and eye injuries -- Reply. *JAMA.* 2012;308(15):1523-1524.
- [27] Alphonse VD, Kemper AR, Strom BT, Beeman SM, Duma SM. Mechanisms of eye injuries from fireworks. *JAMA.* 2012;308(1): 33-34.
- [28] Heier JS, Enzenauer RW, Wintermeyer S.F. Ocular injuries and diseases at a combat support hospital in support of Operations Desert Shield and Desert Storm. *Arch Ophthalmol.* 1993;111:795-798.
- [29] Mader TH, Carroll RD, Slade CS, George RK, Ritchey JP, Neville SP. Ocular war injuries of the Iraqi Insurgency, January-September 2004. *Ophthalmology.* 2006;113(1):97-104.
- [30] Thach AB, Johnson AJ, Carroll RB, Huchun A, Ainbinder DJ, Stutzman RD, Blaydon SM, Demartelaere SL, Mader TH, Slade CS, George RK, Ritchey JP, Barnes SD, Fannin LA. Severe eye injuries in the war in Iraq, 2003-2005. *Ophthalmology.* 2008;115(2):377-82.
- [31] Thomas R, McManus JG, Johnson A, Mayer P, Wade C, Holcomb JB. Ocular injury reduction from ocular protection use in current combat operations. *J Trauma.* 2009;66(4):S99-S103.
- [32] United States Eye Injury Registry. Eye trauma: Epidemiology and prevention [<http://www.useironline.org/Prevention.htm>]. Accessed March 11, 2009.
- [33] Frick KD, Gower EW, Kempen JH, Wolff JL. Economic impact of visual impairment and blindness in the United States. *Arch Ophthalmol.* 2007;125(4):544-550.
- [34] Rein DB, Zhang P, Wirth KE, Lee PP, Hoerger TJ, McCall N, Klein R, Tielsch JM, Vijan S, Saaddine J. The economic burden of major adult visual disorders in the United States. *Arch Ophthalmol.* 2006;124(12):1754-1760.
- [35] Galler EL, Umlas JW, Vinger PF, Wu HK. Ocular integrity after quantitated trauma following photorefractive keratectomy and automated lamellar keratectomy. *Invest Ophthalmol Vis Sci.* 1995;36(4):S580.
- [36] Power ED, Duma SM, Stitzel JD, Herring IP, West RL, Bass CR, Crowley JS, Brozoski, FT. Computer modeling of airbag-induced ocular injury in pilots wearing night vision goggles. *Aviat Space Environ Med.* 2002;73(10):1000-1006.

- [37] Kennedy EA, Duma SM, Depinet P, Morgan C, Beebe M, Roller R, Crowley J, Brozoski F. Design of an advanced headform for the prediction of eye and facial injuries. 2006;25th Army Science Conference, Orlando, Florida.
- [38] Bisplinghoff J, Kennedy E, Cormier J, Depinet P, Brozoski F, Duma S. Development and validation of eye injury and facial fracture criteria for the FOCUS headform. 2008;26th Army Science Conference, Orlando, Florida.
- [39] Cormier JM, Duma SM. Epidemiology of facial fractures in automotive collisions. *Ann Adv Automot Med.* 2009;53:169-176.
- [40] Crowley JS, Brozoski FT, Duma SM, Kennedy EA. Development of the facial and ocular countermeasures safety (FOCUS) headform. *Aviat Space Environ Med.* 2009;80(9):831.
- [41] Cormier J, Manoogian S, Bisplinghoff J, Rowson S, Santago A, McNally C, Duma SM, Bolte J. Biomechanical response of the human face and corresponding biofidelity of the FOCUS headform. *International Journal of Passenger Cars – Mechanical Systems.* 2010;3(1):842-859.
- [42] Cormier J, Manoogian S, Bisplinghoff J, Rowson S, Santago A, McNally C, Duma SM, Bolte J. The tolerance of the maxilla to blunt impact. *J Biomech Eng.* 2011;133(6):064501.
- [43] Cormier J, Manoogian S, Bisplinghoff J, Rowson S, Santago A, McNally C, Duma SM, Bolte J. The tolerance of the frontal bone to blunt impact. *J Biomech Eng.* 2011;133(2):021004.
- [44] Weidenthal DT. Experimental ocular contusion. *Arch Ophthalmol.* 1964;71:111-115.
- [45] Weidenthal DT, Schepens CL. Peripheral fundus changes associated with ocular contusion. *Am J of Ophthalmol.* 1966;62:465-477.
- [46] Delori F, Pomerantzeff O, Cox MS. Deformation of the globe under high speed impact: its relation to contusion injuries. *Invest Ophthalmol.* 1969;8(3):290-301.
- [47] Green RP Jr, Peters DR, Shore JW, Fanton JW, Davis H. Force necessary to fracture the orbital floor. *Ophthal Plast Reconstr Surg.* 1990;6(3):211-217.
- [48] Scott WR, Lloyd WC, Benedict JV, Meredith R. Ocular injuries due to projectile impacts. *Annu Proc Assoc Adv Automot Med.* 2000;44:205-218.
- [49] Stitzel JD, Duma SM, Cormier JM, Herring IP. A nonlinear finite element model of the eye with experimental validation for the prediction of globe rupture. *Stapp Car Crash J.* 2002;46:81-102.
- [50] Stitzel JD, Hansen GA, Herring IP, Duma SM. Blunt trauma of the aging eye: injury mechanisms and increasing lens stiffness. *Arch Ophthalmol.* 2005;123(6):789-794.
- [51] Stitzel J, Kemper A, Duma S. Myopia and hyperopia's effect on probability of globe rupture due to a foreign body impact. *Invest Ophthalmol Vis Sci.* 2005;46.
- [52] Weaver AA, Loftis KL, Tan JC, Duma SM, Stitzel JD. CT based three-dimensional measurement of orbit and eye anthropometry. *Invest Ophthalmol Vis Sci.* 2010;51(10):4892-4897.
- [53] Weaver AA, Loftis KL, Duma SM, Stitzel JD. Biomechanical modeling of eye trauma for different orbit anthropometries. *J Biomech.* 2011;44(7):1296-1303.
- [54] Weaver AA, Kennedy EA, Duma SM, Stitzel JD. Evaluation of different projectiles in matched experimental eye impact simulations. *J Biomech Eng.* 2011;133(3):031002.

- [55] Duma SM, Schreiber PH, McMaster JD, Crandall JR, Bass CR, Pilkey WD. Dynamic injury tolerance for long bones in the female upper extremity. *J Anat.* 1999;194(3):463-471.
- [56] Duma SM, Schreiber P, McMaster JD, Crandall JR, Bass CR. Fracture tolerance of the male forearm: the effect of pronation versus supination. *Proceedings of the Institution of Mechanical Engineers Part D - Journal of Automobile Engineering.* 216(D8):649-654, 2002.
- [57] Duma SM, Boggess BM, Crandall JR, MacMahon CB. Injury risk function for the small female wrist in axial loading. *Accid Anal Prev.* 2003;35(6):869-875.
- [58] Moorcroft DM, Stitzel JD, Duma GG, Duma SM. Computational model of the pregnant occupant: predicting the risk of injury in automobile crashes. *Am J Obstet Gynecol.* 2003;189(2):540-544.
- [59] Rowson, S, Duma SM. Development of the STAR evaluation system for football helmets: integrating player head impact exposure and risk of concussion. *Ann Biomed Eng.* 2011;39(8):2130-2140.
- [60] Funk JR, Rowson S, Daniel RW, Duma SM. Validation of concussion risk curves for collegiate football players derived from HITS data. *Ann Biomed Eng.* 2012;40(1):79-89.
- [61] Rowson S, Duma SM, Beckwith JG, Chu JJ, Greenwald RM, Crisco JJ, Broinson PG, Duhaime AC, McAllister TW, Maerlender AC. Rotational head kinematics in football impacts: an injury risk function for Concussion. *Ann Biomed Eng.* 2012;40(1):1-13.
- [62] Duma SM, Ng TP, Kennedy EA, Stitzel JD, Herring IP, Ferenc K. Determination of significant parameters for eye injury risk from projectiles. *J Trauma.* 2005;59:960-964.
- [63] Kennedy EA, Duma SM. Eye injury risk functions for human and FOCUS eyes: hyphema, lens dislocation, and retinal damage. Prepared for: US Army Medical Research and Materiel Command, Fort Detrick, MD. Updated July 8, 2011.
- [64] Bisplinghoff JA, McNally C, Duma SM. High-rate internal pressurization of human eyes to predict globe rupture. *Arch Ophthalmol.* 2009;127(4):520-523.
- [65] Bisplinghoff JA, McNally C, Manoogian SJ, Duma SM. Dynamic material properties of the human sclera. *J Biomech.* 2009;42(10):1493-1497.
- [66] Duma SM, Bisplinghoff JA, Senge DM, McNally C, Alphonse VD. Eye injury risk from water stream impact: biomechanically based design parameters for water toy and park design. *Curr Eye Res.* 2012;37(4):279-285.
- [67] Cormier J, Manoogian S, Bisplinghoff J, Rowson S, Santiago A, McNally C, Duma SM, Bolte J. The tolerance of the nasal bone to blunt impact. *Ann Adv Automot Med.* 2010;54:3-14.
- [68] Kennedy EA, Inzana JA, McNally C, Duma SM, Depinet PJ, Sullenberger KH, Morgan CR, Brozoski FT. Development and validation of a synthetic eye and orbit for estimating the potential for globe rupture due to specific impact conditions. *Stapp Car Crash J.* 2007;51:381-400.
- [69] Kennedy EA, Duma SM. The effects of the extraocular muscles on eye impact force-deflection and globe rupture response. *J Biomech.* 2008;41(16):3297-3302.
- [70] US Consumer Product Safety Commission. National Electronic Injury Surveillance System data, 1991-2010. [Machine-readable public use data type.] Washington, DC: US Consumer Product Safety Commission, 2012.
- [71] Smith GA, Knapp JF, Barnett TM, Shields BJ. The rocket's red glare, the bombs bursting in air: fireworks-related injuries to children. *Pediatrics.* 1996;98(1):1-9.

- [72] From the Centers for Disease Control and Prevention Brief Report: Injuries Associated with Homemade Fireworks – Selected States, 1993-2004. *JAMA*. 2004;292(13):1545-1546.
- [73] [No authors listed]. From the Centers for Disease Control and Prevention. Injuries from fireworks in the United States. *JAMA*. 2000;284(3):302.
- [74] Fireworks, Publication #12. US Consumer Product Safety Commission. <http://www.cpsc.gov/cpscpub/pubs/012.html>. Accessed December 16, 2011.
- [75] Witsaman RJ, Comstock RD, Smith GA. Pediatric fireworks-related injuries in the United States: 1990-2003. *Pediatrics*. 2006;118(1):296-303.
- [76] Khan M, Reichstein D, M Recchia F. Ocular consequences of bottle rocket injuries in children and adolescents. *Arch Ophthalmol*. 2011;129(5):639-642.
- [77] Kennedy EA, Ng TP, McNally C, Stitzel JD, Duma SM. Risk functions for human and porcine eye rupture based on projectile characteristics of blunt objects. *Stapp Car Crash J*. 2006;50:651-671.
- [78] DePalma RG, Burriss DG, Champion HR, Hodgson MJ. Blast Injuries. *N Engl J Med*. 2005;352(13):1335-1342.
- [79] Ritenour AE, Baskin TW. Primary blast injury: Update on diagnosis and treatment. *Crit Care Med*. 2008;36(7 Suppl): S311-S317.
- [80] Mayorga MA. The Pathology of primary blast overpressure injury. *Toxicology*. 1997;121(1):17-28.
- [81] Sponsel WE, Gray W, Scribbick FW, Stern AR, Weiss CE, Groth SL, Walker JD. Blunt eye trauma: Empirical histopathologic paintball impact thresholds in fresh mounted porcine eyes. *Invest Ophthalmol Vis Sci*. 2011;52(8):5157-5166.
- [82] Stuhmiller JH, Phillips III YY, Richmond DR. The physics and mechanisms of primary blast injury. In: Bellamy RF, Zajtchuk R, eds. *Conventional Warfare: Ballistic, Blast and Burn Injuries*. Washington, DC: Office of the Surgeon General at TMM Publications; 1990:241-270. <http://bordeninstitute.army.mil/published.html>. Accessed July 19, 2011.
- [83] McFarland LV, Harris JR, Kobayashi JM, Dicker RC. Risk factors for fireworks-related injury in Washington State. *JAMA*. 1984;251(24):3251-3254.
- [84] [No authors listed]. US Consumer Product Safety Commission Office of Compliance Summary of Fireworks Regulations, 16. C.F.R. Part 15 & 1507. Consumer Product Safety Commission Web site. <http://www.cpsc.gov/businfo/regsumfirework.pdf>. Published: January, 2001. Accessed: December 16, 2011.
- [85] Bhardwai R, Ziegler K, Seo JH, Ramesh KT, Ngyuen TD. A computational model of blast loading on the human eye. *Biomech Model Mechanobiol*. 2013;Apr 17 [Epub ahead of print].
- [86] Esposito L, Clemente C, Bonora N, Rossi T. Modelling human eye under blast loading. *Comput Methods Biomech Biomed Engin*. 2013;Mar 22 [Epub ahead of print].