

## **APPENDIX D**

### **GEOTECHNICAL FIELD INVESTIGATIONS AT**

#### **THE ROUTE 351 BRIDGE TEST SITE**

This appendix contains the results of geotechnical field investigations completed at the test site at the Route 351 bridge project.

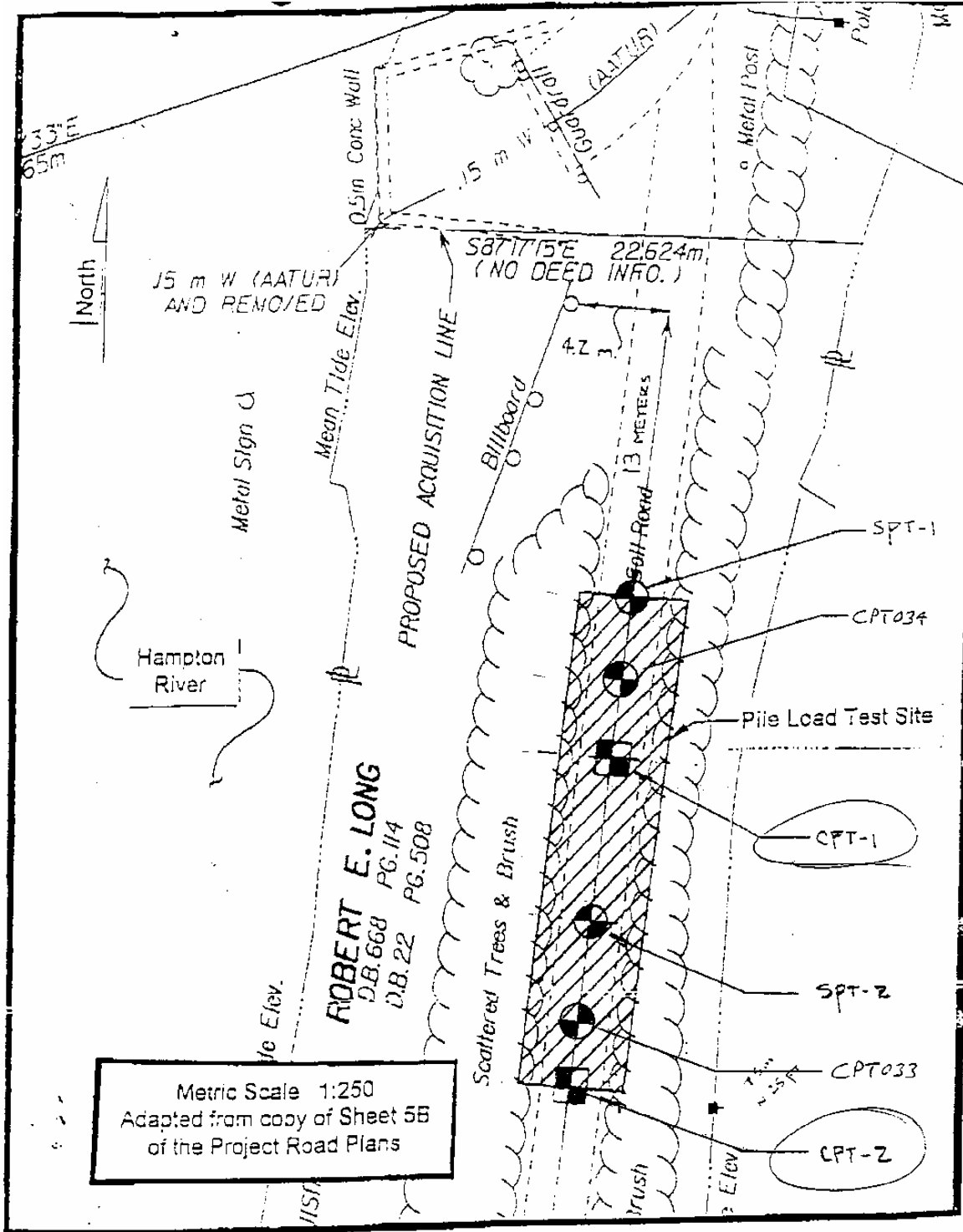
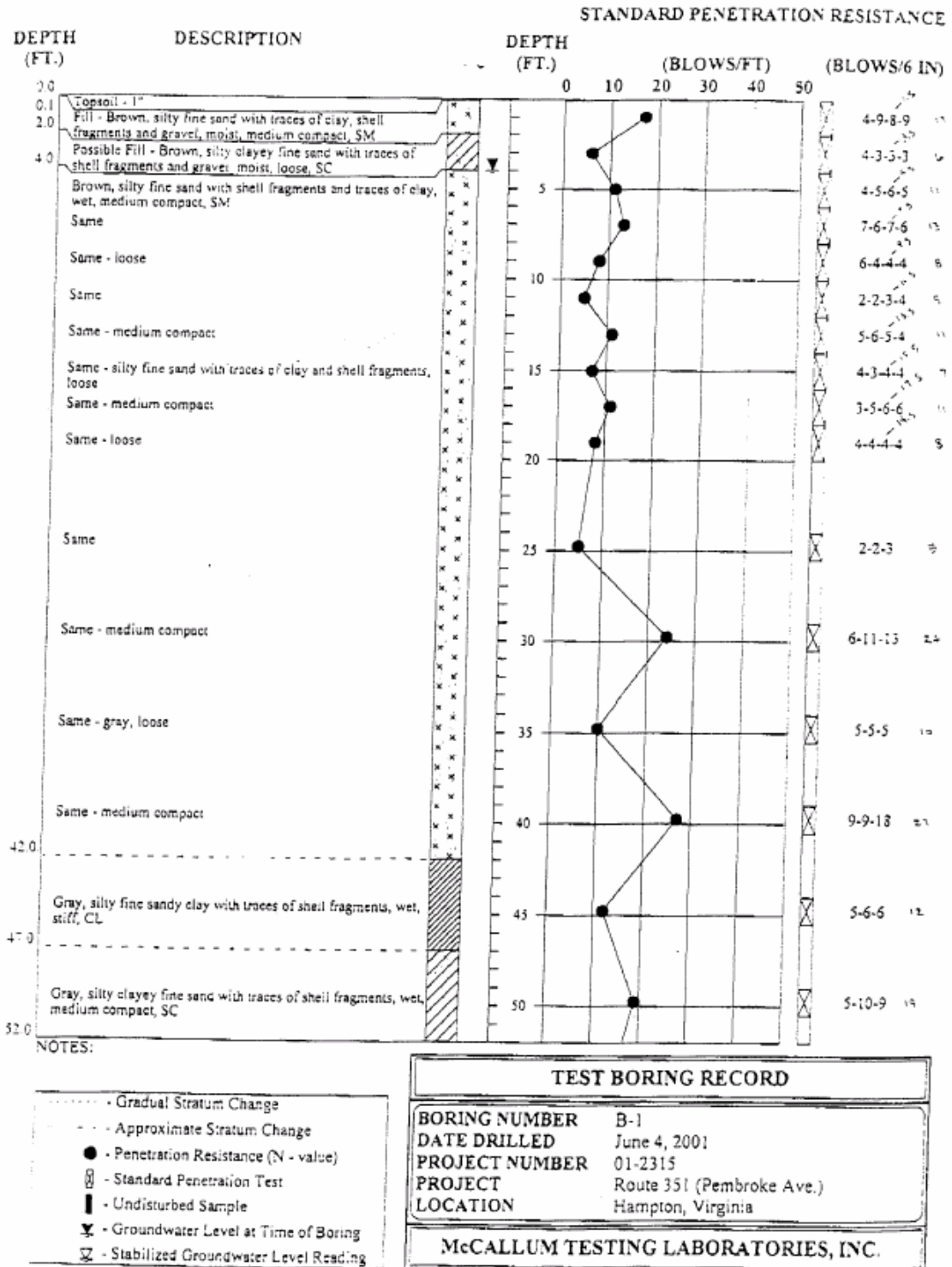
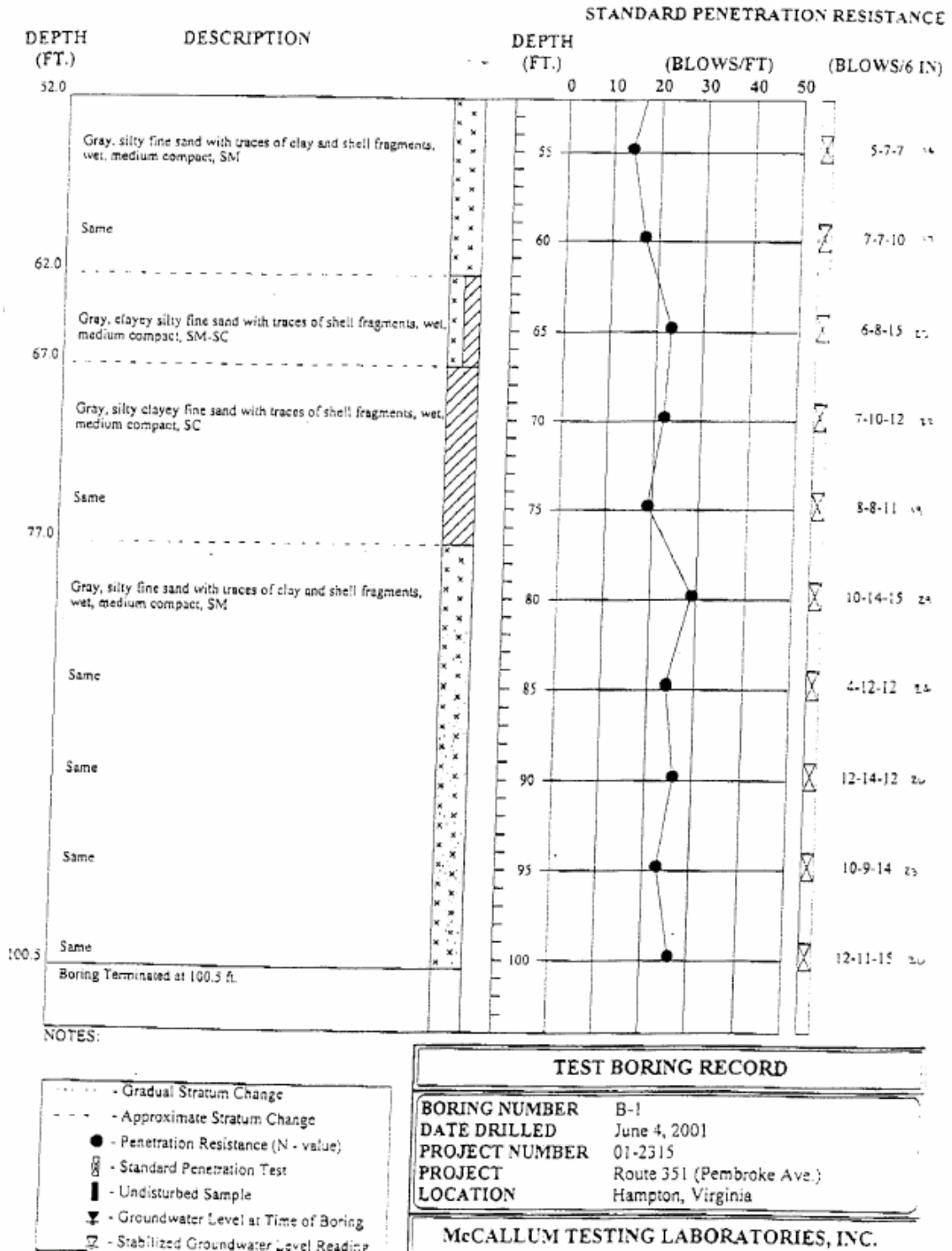


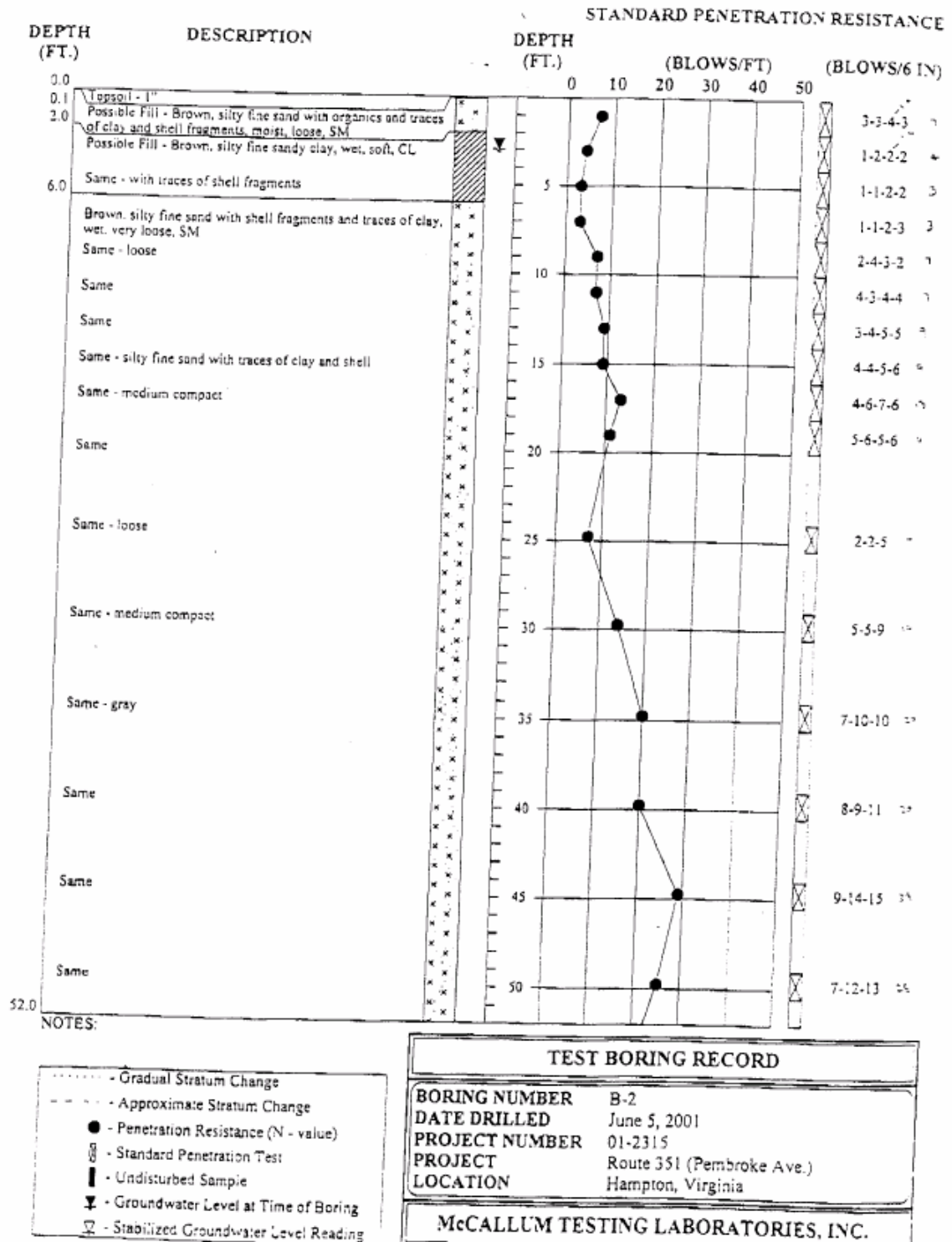
Figure D.1 Location of field tests



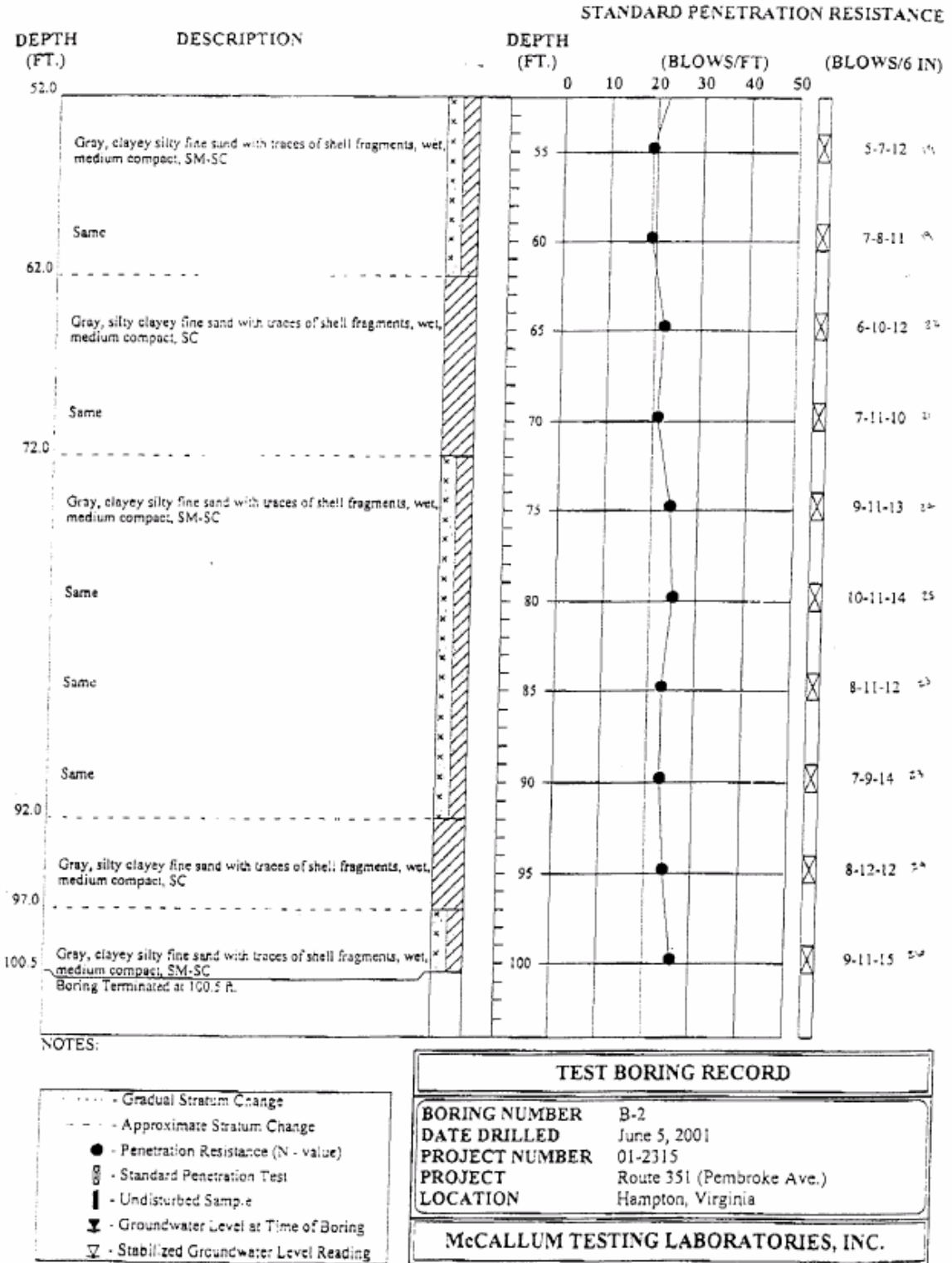
**Figure D.2 Boring B-1 (SPT-1)**



**Figure D.2 Boring B-1 (SPT-1), continued**



**Figure D.3 Boring B-2 (SPT-2)**



**Figure D.3 Boring B-2 (SPT-2), continued**

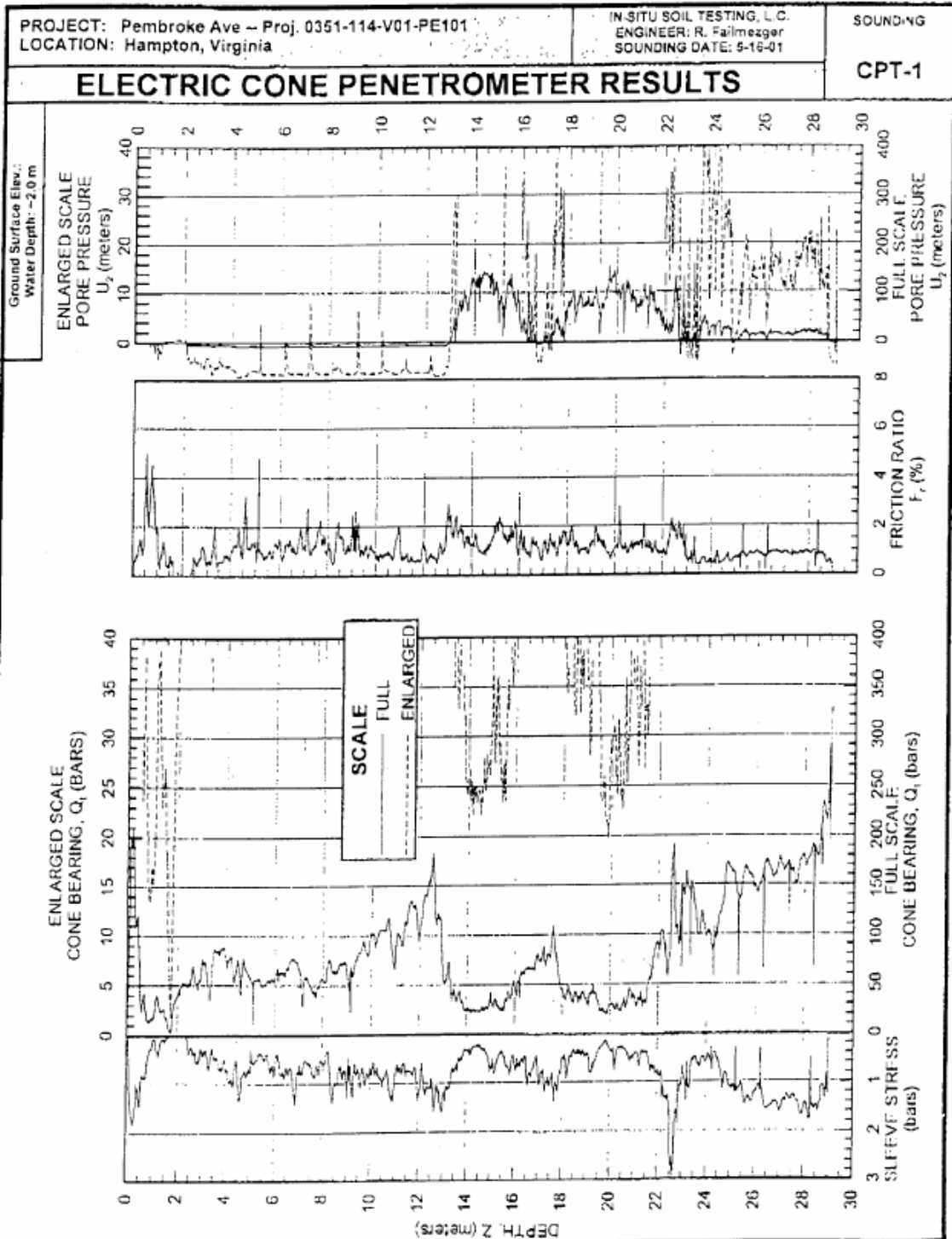
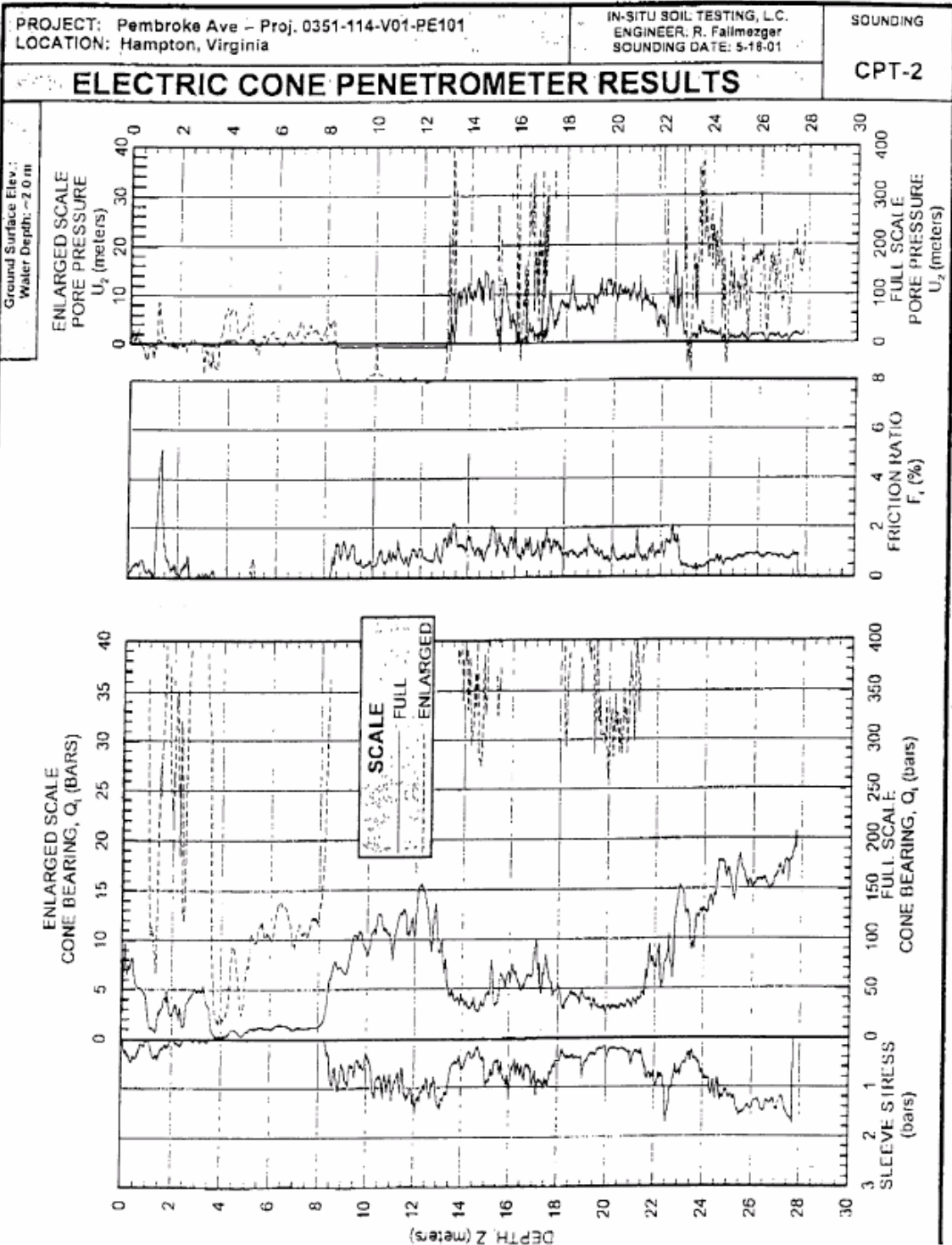


Figure D.4 CPT-1

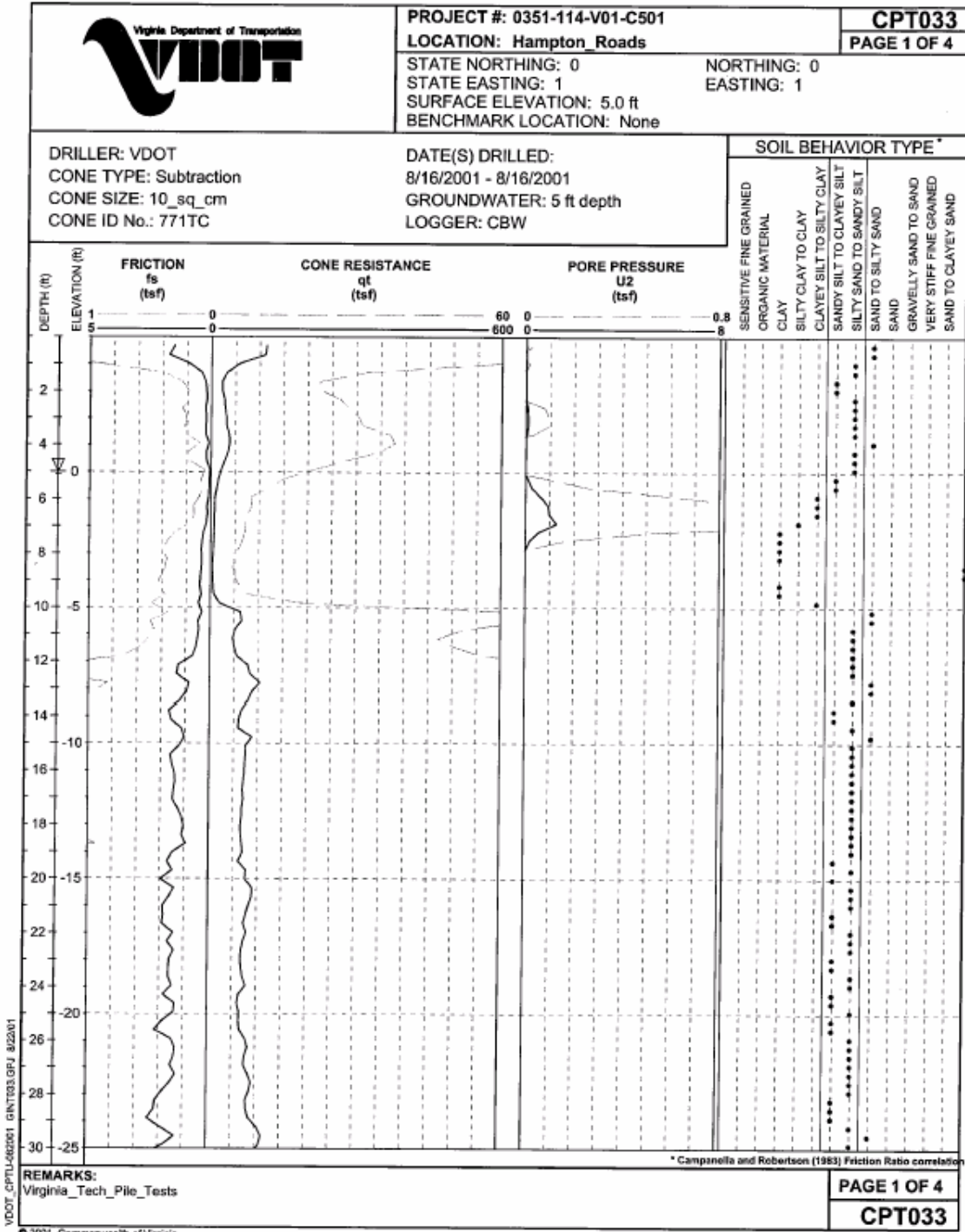




**Figure D.5 CPT-2**



# CONE PENETROMETER TEST LOG



**Figure D.6 CPT033**

# CONE PENETROMETER TEST LOG

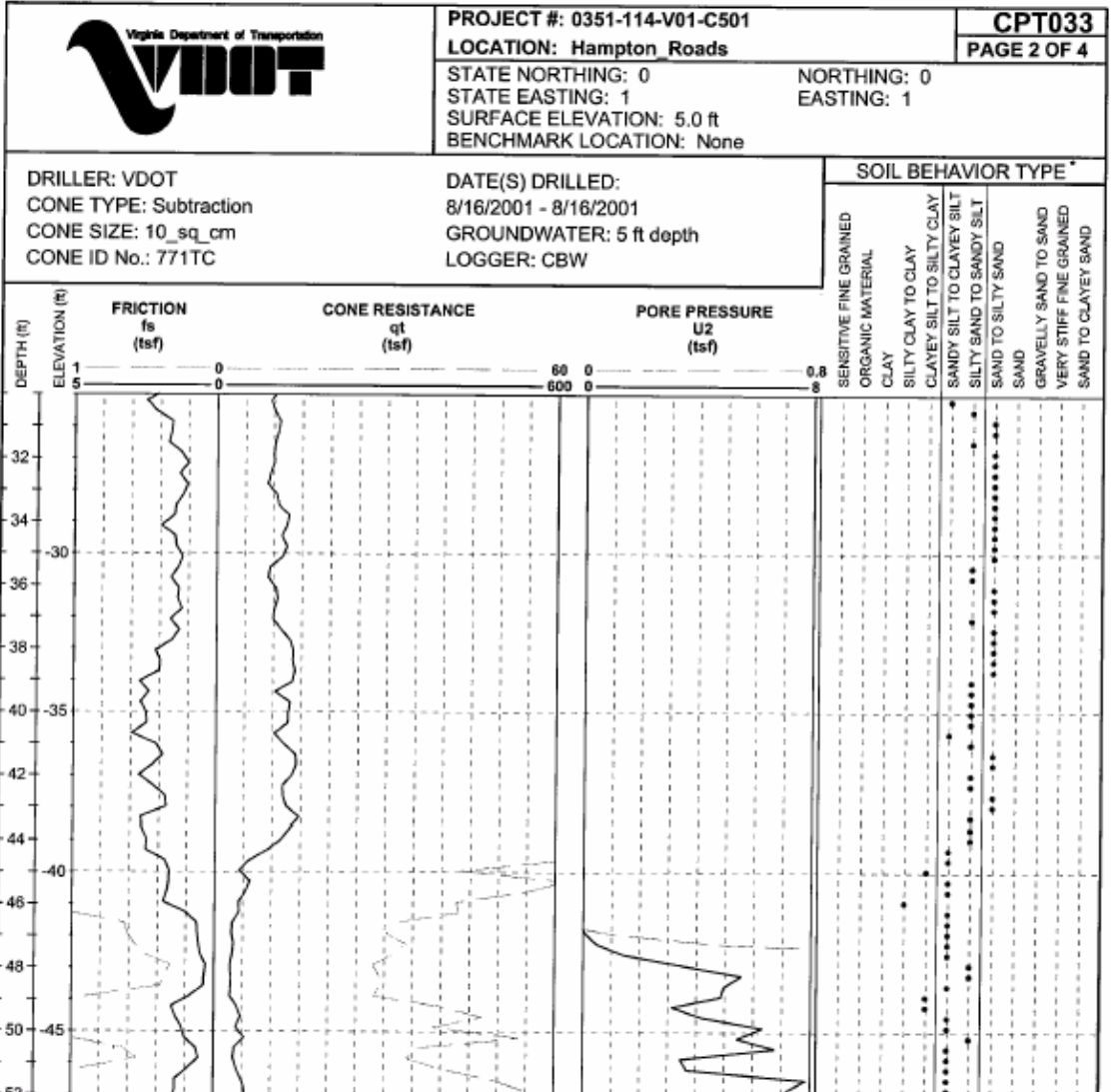
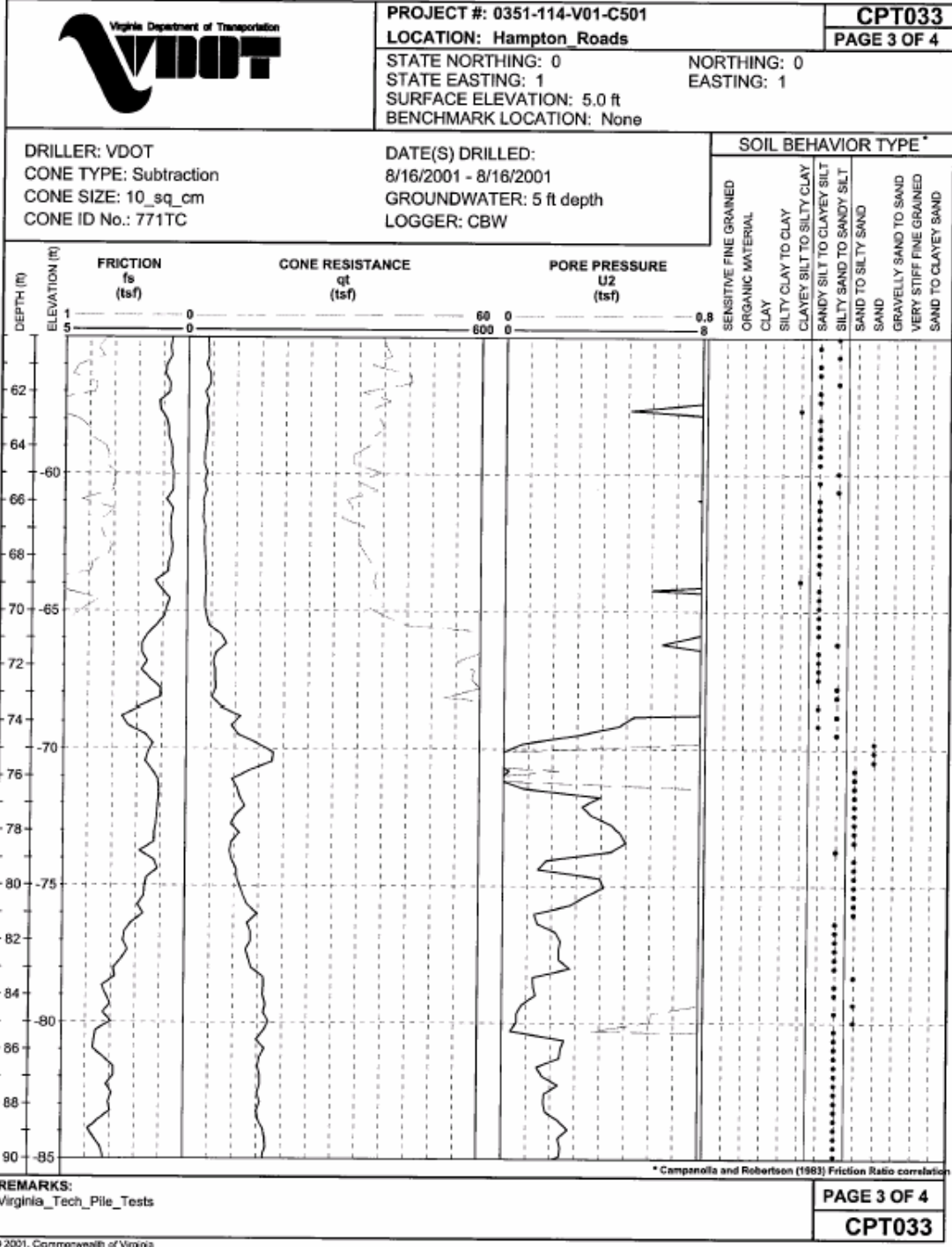


Figure D.6 CPT033, continued

# CONE PENETROMETER TEST LOG



VDOT\_CPTU-082001\_GINT033.GPJ 8/22/01

REMARKS:  
Virginia\_Tech\_Pile\_Tests

PAGE 3 OF 4  
**CPT033**

© 2001, Commonwealth of Virginia

Figure D.6 CPT033, continued

### CONE PENETROMETER TEST LOG


	PROJECT #: 0351-114-V01-C501	<b>CPT033</b>		
	LOCATION: Hampton Roads	PAGE 4 OF 4		
	STATE NORTHING: 0	NORTHING: 0		
	STATE EASTING: 1	EASTING: 1		
	SURFACE ELEVATION: 5.0 ft			
	BENCHMARK LOCATION: None			
DRILLER: VDOT	DATE(S) DRILLED: 8/16/2001 - 8/16/2001	SOIL BEHAVIOR TYPE *		
CONE TYPE: Subtraction	GROUNDWATER: 5 ft depth			
CONE SIZE: 10_sq_cm	LOGGER: CBW			
CONE ID No.: 771TC				
DEPTH (ft) ELEVATION (ft)	FRICION fs (tsf)	CONE RESISTANCE qt (tsf)	PORE PRESSURE U2 (tsf)	SENSITIVE FINE GRAINED ORGANIC MATERIAL CLAY SILTY CLAY TO CLAY CLAYEY SILT TO SILTY CLAY SANDY SILT TO CLAYEY SILT SILTY SAND TO SANDY SILT SAND TO SILTY SAND SAND GRAVELLY SAND TO SAND VERY STIFF FINE GRAINED SAND TO CLAYEY SAND
1 5	0	60 600	0 0	0.8 8
92 94 90				
REMARKS: Virginia_Tech_Pile_Tests				* Campanella and Robertson (1983) Friction Ratio correlation
				PAGE 4 OF 4
				CPT033

Figure D.6 CPT033, continued

# CONE PENETROMETER TEST LOG

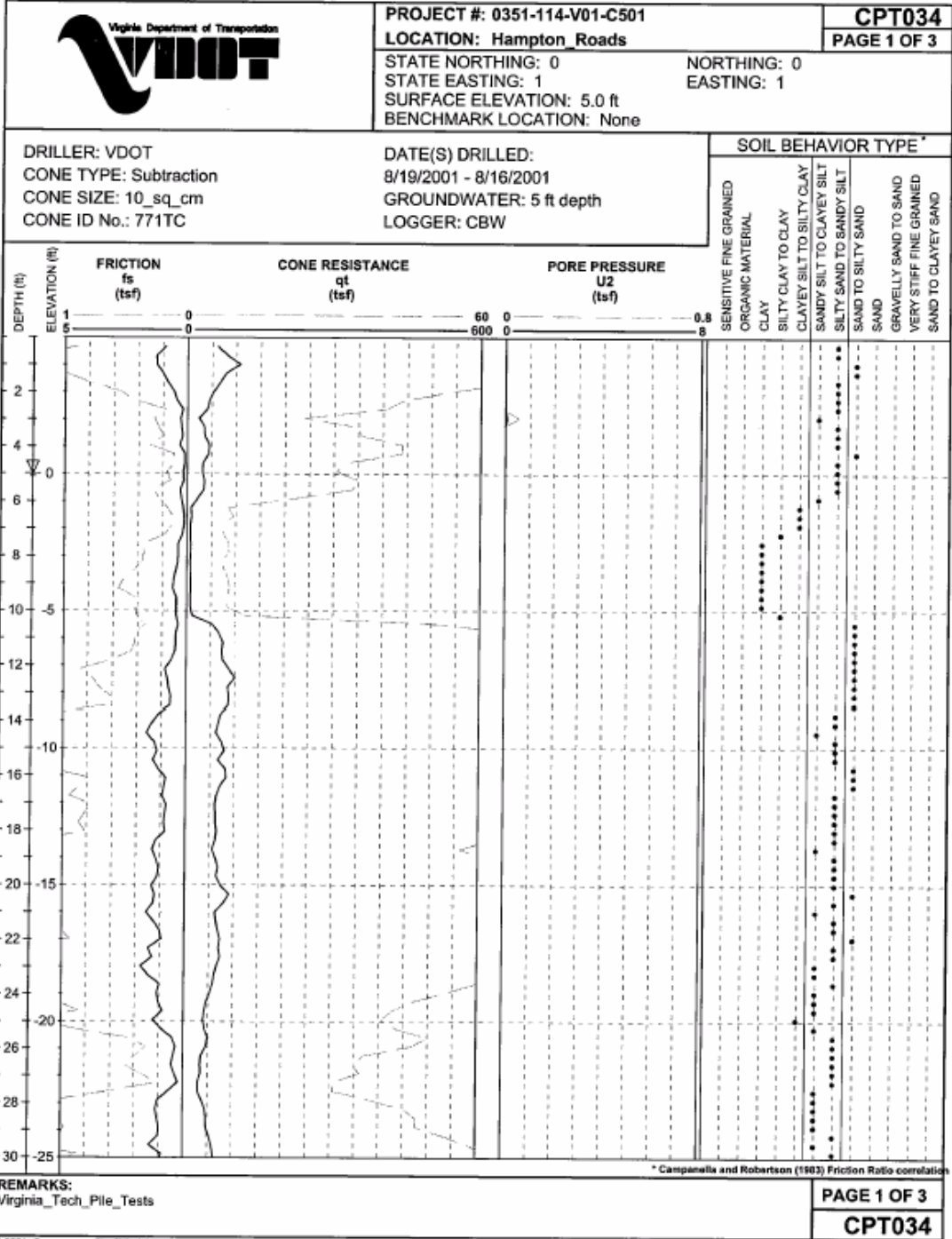


Figure D.7 CPT034



# CONE PENETROMETER TEST LOG

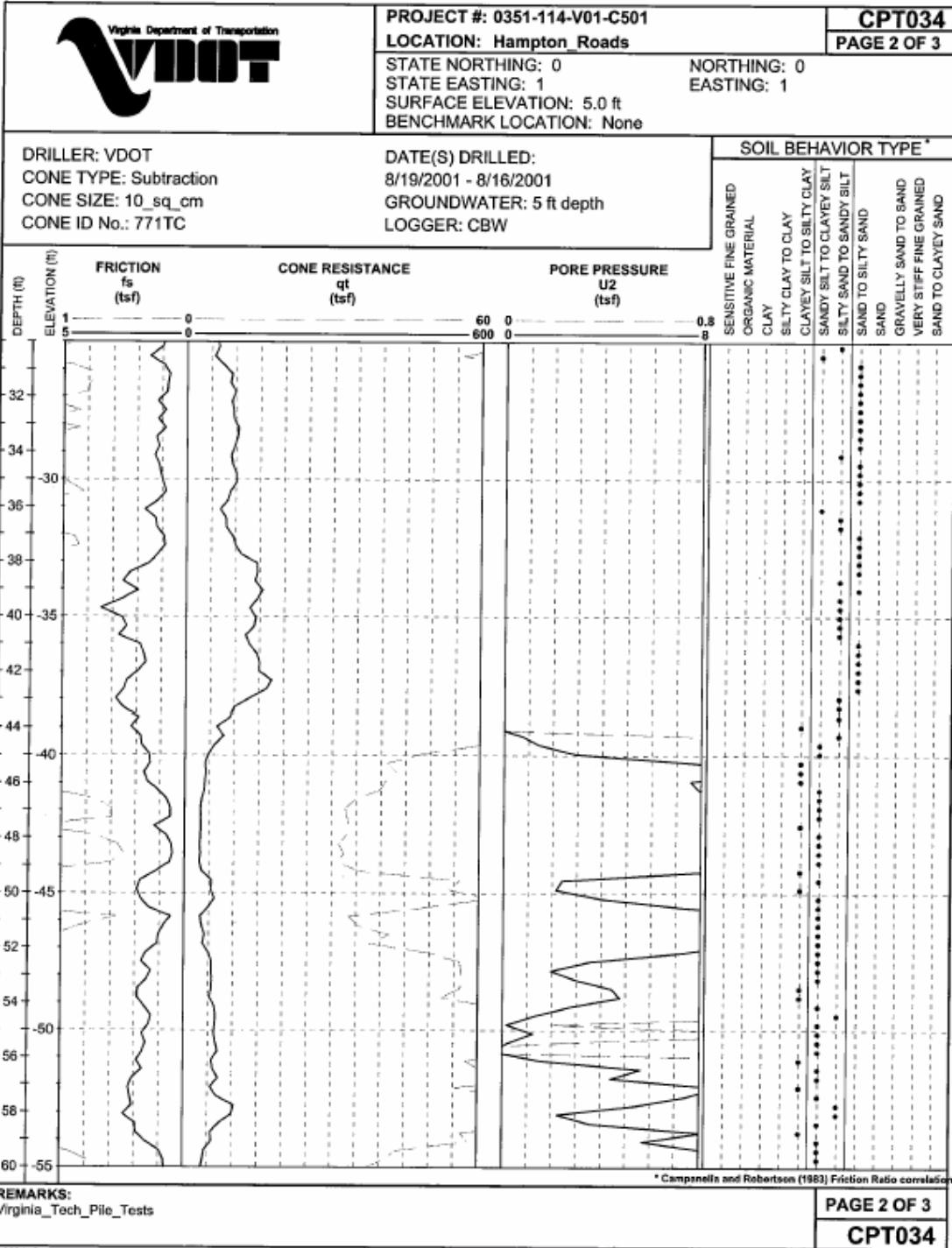
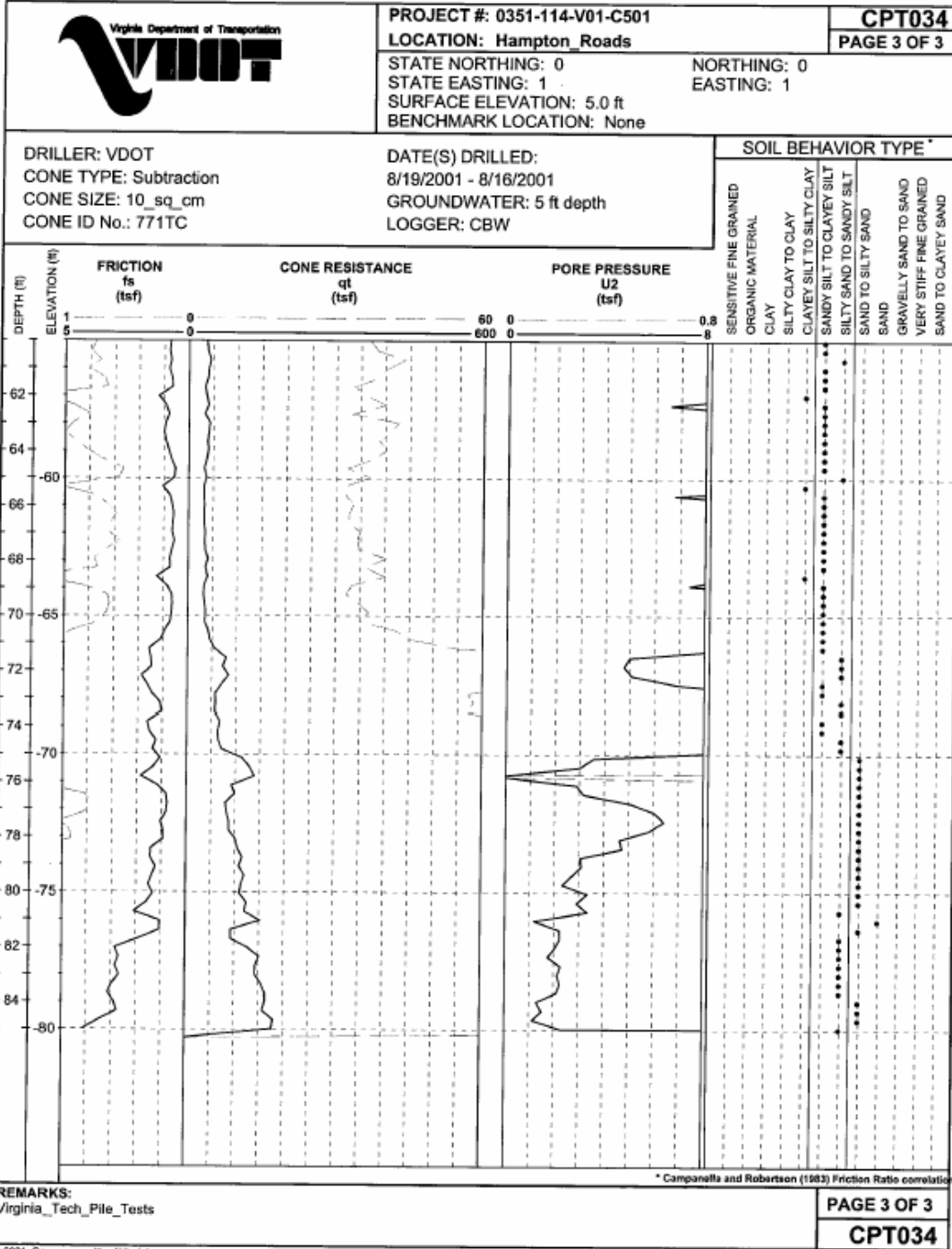


Figure D.7 CPT034, continued

# CONE PENETROMETER TEST LOG



REMARKS: Virginia\_Tech\_Pile\_Tests

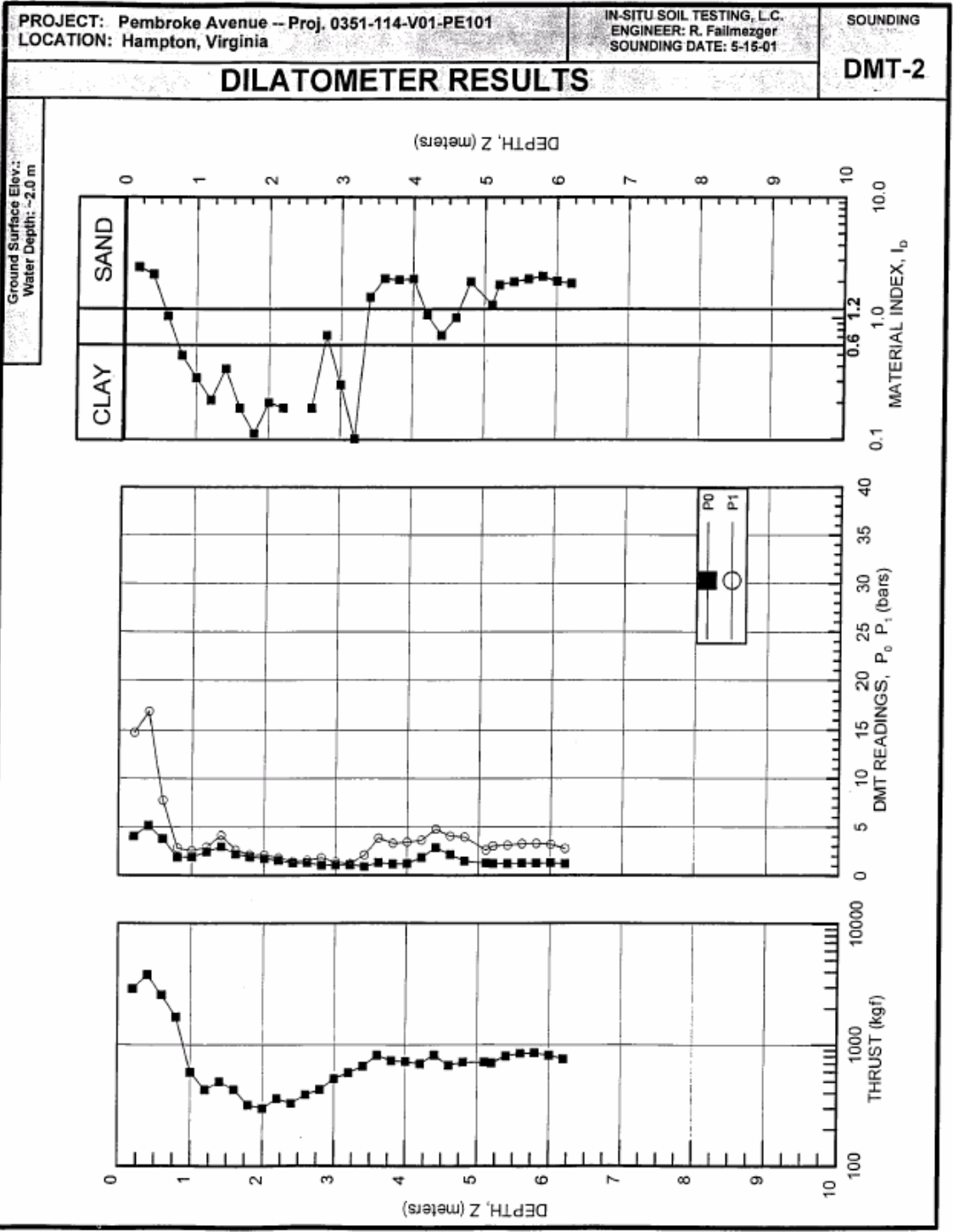
\* Campanella and Robertson (1983) Friction Ratio correlation

PAGE 3 OF 3  
**CPT034**

© 2001, Commonwealth of Virginia

Figure D.7 CPT034, continued





**Figure D.8 DMT**