

## CHAPTER 7

### EXPERIMENTAL STUDY USING COMPOSITE BEAM TESTS

#### 7.1 General

In previous chapters, the results of over 200 composite slab push-out tests performed at VT were used to develop a new strength prediction method for welded headed shear studs. In Chapter 8, the results of more than 80 full-scale beam tests performed at VT and elsewhere will be used to verify the accuracy of the new method for predicting the bending strength of composite beams.

This chapter will describe three new beam tests, the results of which are included in the beam tests reported in Chapter 8, that were performed at VT. These tests were similar to the tests performed by Gibbings et al (1993), who used 3 in. deck. By comparing the results of these new tests to the results from Gibbings et al (1993), one may investigate the effect of deck height on stud strength. This effect has already been studied by using the results of push-out tests.

The only nominal difference in the three new beam tests was the stud position. The first test had single studs placed in the strong position; the second test had single studs placed in the weak position; and the third test had pairs of studs placed in the strong position. A comparison of the first and second tests will determine the effect of the stud position in the rib on stud strength. A comparison of the first and third tests will determine if there is a reduction in strength if studs are placed in pairs.

## 7.2 Composite Beam Test Matrix

Three composite beams were tested, with the only nominal difference in the tests being the position of the shear studs in the deck ribs and the number of studs in each rib. The test parameters are summarized in Table 7.1. Each of the beams consisted of a

**Table 7.1 Beam Test Parameters**

<b>Dimensions and Sizes for all Tests</b>		
Span: 30 ft (32 ft beam length)		
Section: W16x31 A572 Gr50		
Slab Size: 5 in. x 81 in. x 32 ft		
Deck: 2 in. 20 gauge		
Stud Size: 3/4 in. x 3 1/2 in. (after welding)		
$f'_c$ : 4000 psi normal weight		
No. Studs Per Beam: 28		

<b>Stud Position and Layout</b>		
<b>Test No.</b>	<b>Stud Position</b>	<b>Single or Pairs?</b>
1	Strong	Single
2	Weak	Single
3	Strong	Pairs

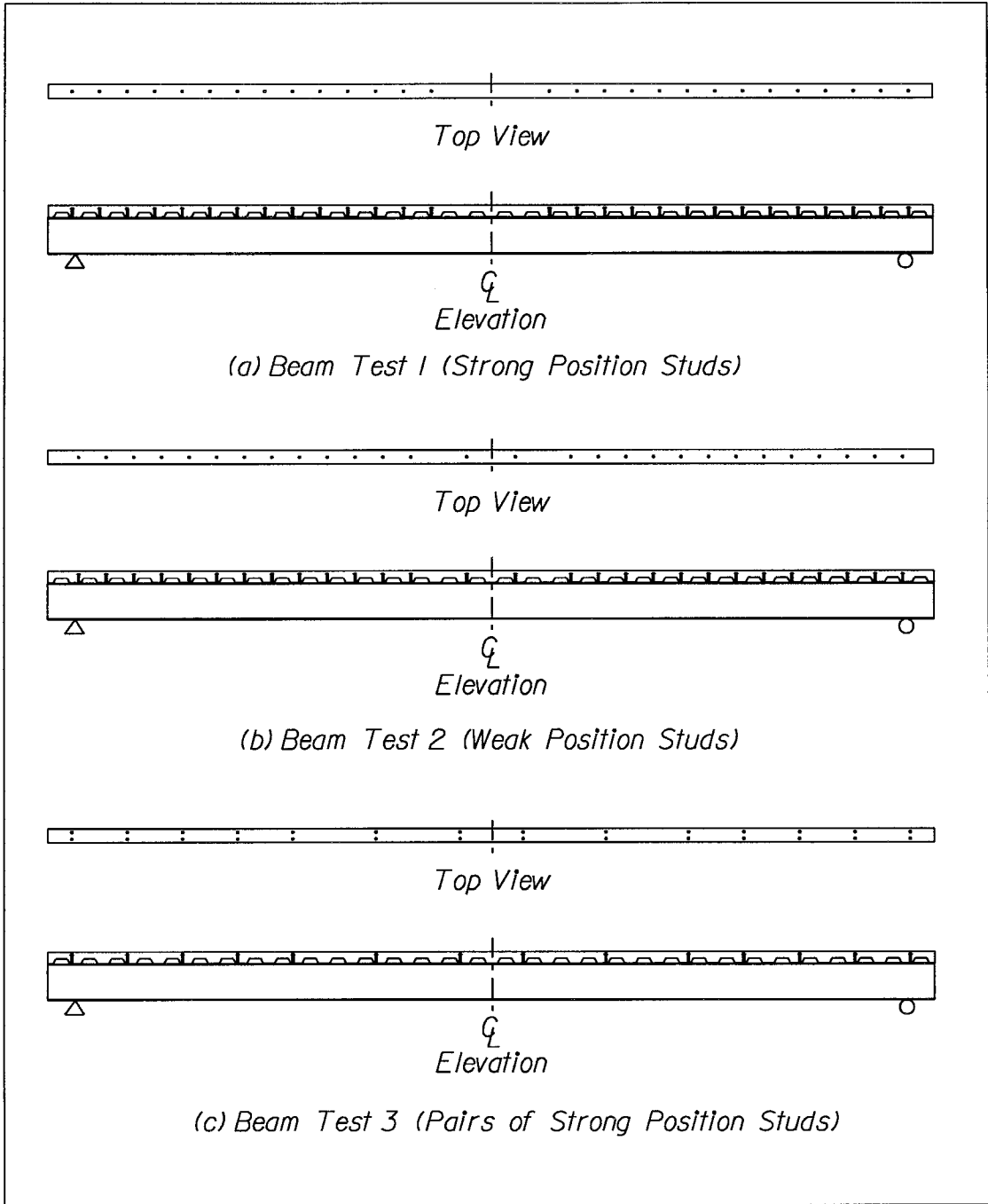
simply supported W16x31 A572 Grade 50 section with a 5 in. deep composite slab. The beams were 32 ft long and spanned 30 ft between supports. The steel section and concrete slab were connected with 28 – 3/4 in. x 3 1/2 in. (after welding studs that were welded through the deck). The 81 in. wide slab used normal weight concrete, with a nominal strength of 4000 psi. The deck was 2 in. deep and 20 gauge, with the ribs placed perpendicular to the beam. The beams were designed to be partially composite.

The steel sections used in all three tests were from the same heat and thus had the same material properties. The same comment applies to the shear studs. The major

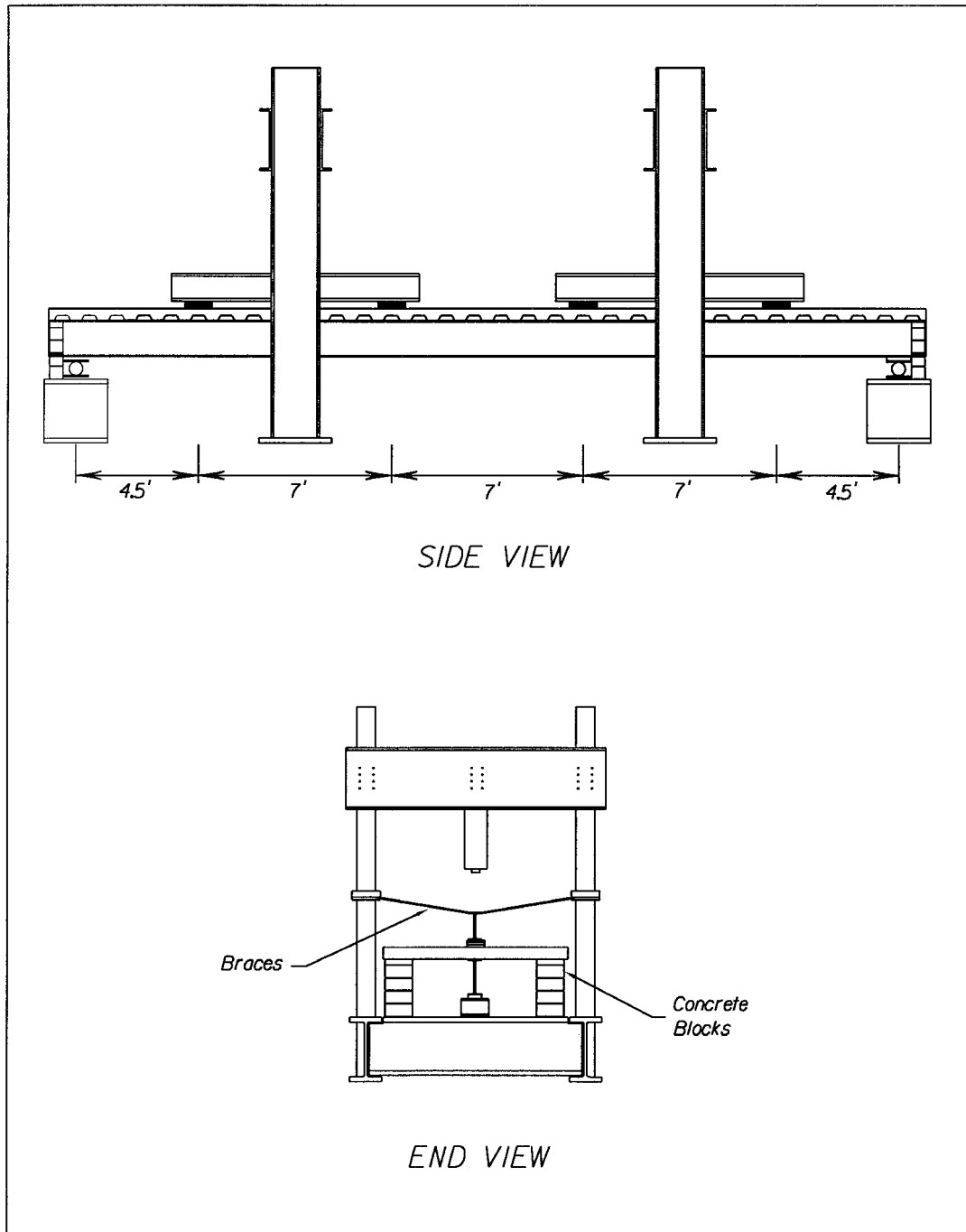
difference in the tests was the stud position and the number of studs per rib. The first test had 28 single studs placed in the strong position, with the studs placed in every rib except for three. The second test had 28 single studs placed in the weak position, with the studs placed in every rib except for three. The third test had 28 studs placed in pairs in the strong position, with the studs placed in every other rib. Stud positions are shown in Fig. 7.1.

### **7.3 Composite Beam Test Specimen Configuration and Construction**

All specimens were constructed in the same manner. The test configuration is shown in Fig. 7.2. First, the steel section was placed on its supports. The deck was then placed and the studs were welded through it. Each seam was then button-punched four times. Cold-formed pour stop, which was 5 in. deep, was then screwed to the deck around the perimeter of the deck. Holes were drilled in the deck near the shear studs to permit monitoring of the slips during testing. A single layer of 6x6-W1.4x1.4 welded wire fabric was placed on top of the deck. Timber supports were placed under the deck at the quarter-points on the slab edges. These supports were cut to a length so that they would just begin to bear on the floor of the laboratory when concrete casting was complete. Concrete blocks were placed under the corners of the slab to stabilize the floor during casting and testing. The concrete slab was then cast, along with 4 in.-diameter x 8 in.-high cylinders. Several measurements were taken during concrete placement, and were recorded when casting was complete: Loads at the supports; deflections at the supports, quarter-points, and centerline; and strains in the steel section. The slab and



**Fig. 7.1** Positions of Studs in Beam Tests



**Fig. 7.2 Beam Test Setup**

cylinders were covered with plastic and moist-cured for seven days. The plastic, timber supports, and pour-stop were then removed. The concrete was cured for a minimum of 28 days before testing began.

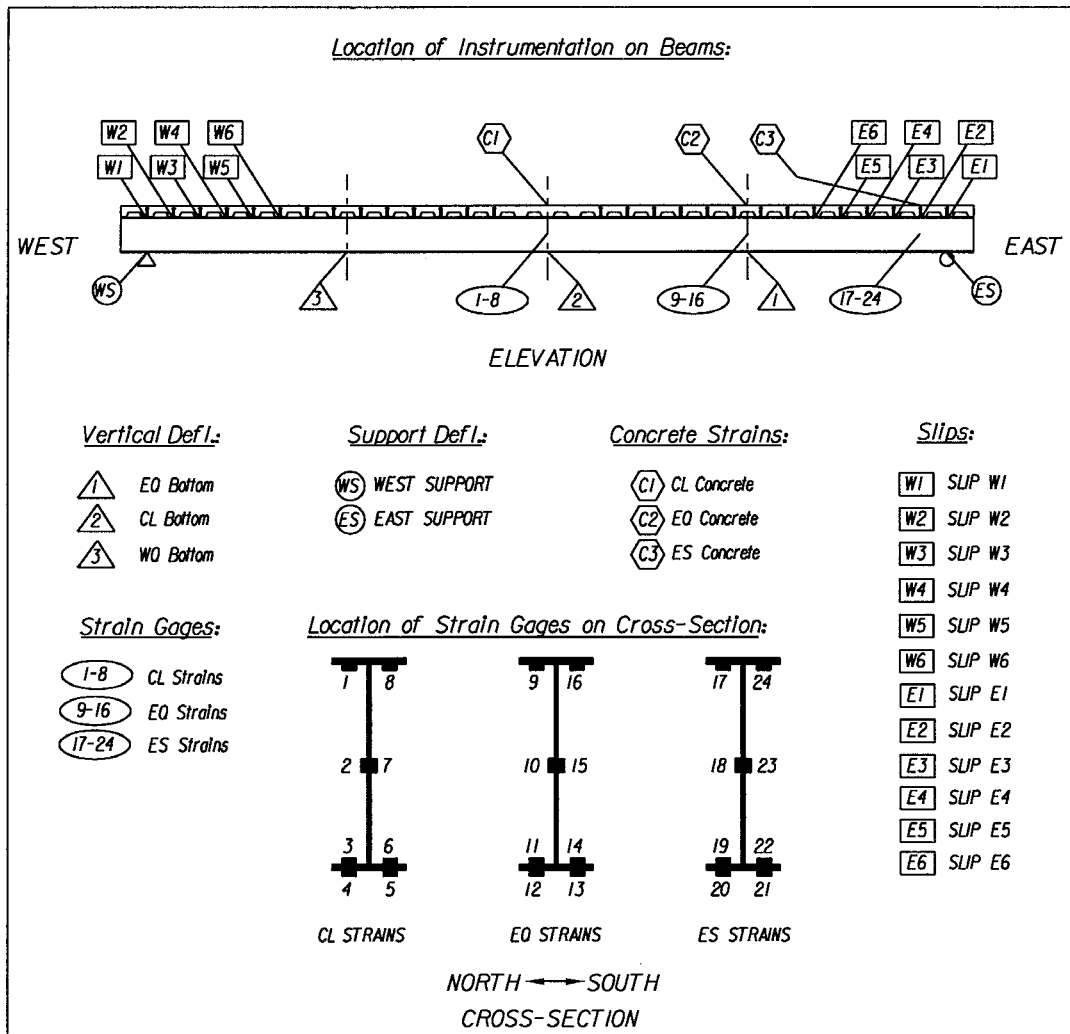
#### **7.4 Instrumentation of Composite Beam Tests**

The three beams were instrumented similarly. An instrumentation diagram is shown in Fig. 7.3. Deflections of the bottom flange of the steel section were monitored at the centerline and quarter-points with linear wire transducers. Deflections of the supports were measured with dial gages.

Strains were measured in eight locations within a given cross-section: two on the bottom of the top flange, two on the center of the web, two on the top of the bottom flange, and two on the bottom of the bottom flange. This was done at three locations along the beam: the centerline, east quarter-point, and 1 ft from the support. This resulted in a total of 24 strain measurements for each beam.

Slips were measured with potentiometers that were attached to the top flange of the beam. The tips of the potentiometers were wired to nails that were placed in the concrete slab and through the holes that were drilled in the deck before the concrete was cast. Measurements were taken adjacent to the six ribs nearest each support.

Concrete strains in the top of the slab were measured at the centerline, the east quarter-point, and 1 ft from the east support of each beam.



**Fig. 7.3 Instrumentation of Beam Tests**

### 7.5 Composite Beam Test Procedure

All the beams were tested similarly. The load was applied using two hydraulic rams and was measured with load cells placed above the rams. Each ram applied load to a “distribution beam” that was supported by the test specimen. This distributed the loads from the two rams to four points on the test specimen. The beam was first loaded to

about 15% of its predicted capacity. It was then unloaded, and the measurements were all “zeroed”. Increments of load were then applied to the beam, and the measurements were recorded after each increment. When the load-deflection response became non-linear, the beam was unloaded and then reloaded, stopping approximately three times to record measurements. Thereafter, the beam was loaded in increments of midspan deflection until failure of the specimen was observed or until very large deflections occurred.

## **7.6 Results of Composite Beam Tests**

### **7.6.1 General**

This section is a discussion of how the data was adjusted to obtain the “total loads” and their effects and how the predicted results were obtained. Test data and calculations are reported in Rambo-Roddenberry et al (2002).

The total load given consists of the theoretical weight of the steel beam, deck, concrete, load beams and plates, and the measured applied load. Effects due to the weight of the steel beam and deck could not be measured, so they were determined theoretically by interpolating from the measurements taken during concrete placement. The weights of the beam and deck were determined theoretically and then calculated as a fraction of the measured weight of the concrete. The deflections and strains were also adjusted accordingly. The deflections were also adjusted by subtracting the support deflections.



The experimental moment of inertia,  $I_e$ , was found by using two data points in the elastic region of the load vs. midspan deflection plot.

The predicted moment of inertia was found from the following formula:

$$I_c = I_s + 0.85p^{0.25}(I_t - I_s)$$

where  $I_c$  = predicted moment of inertia

$I_s$  = moment of inertia of steel section

$p = \Sigma Q_c / A_s F_y$  = ratio of composite action, using the new stud strength prediction method

$I_t$  = transformed moment of inertia of composite beam

The experimental ultimate moment,  $M_e$ , was found by separating the distributed loads (due to the weight of the specimen) from the point loads (due to the load beams and plates and the applied loads). The moment was then calculated using statics.

The experimental stud strength,  $Q_{bc}$ , was found by back-calculating the stud strength that was necessary to obtain the experimental flexural strength.

The stud strength was predicted using either the AISC stud strength model or the new stud strength model and the flexural strength was predicted using the AISC flexural strength method.

### **7.6.2 Beam Test 1**

The first beam had single studs welded in the strong position. There were 28 studs total, with 12 studs in each “shear span”, between zero and maximum moments.

The concrete strength was 5000 psi, with a unit weight of 141.3 pcf. The studs had an ultimate strength, which was supplied by the manufacturer, of 66.8 ksi. The flanges of the W16x31 beam had yield and ultimate strengths of 54.3 ksi and 72.6 ksi, respectively. The web had yield and ultimate strengths of 58.2 ksi and 72.4 ksi, respectively.

The predicted moment of inertia was 1061 in<sup>4</sup>. The experimental moment of inertia was 1139 in<sup>4</sup>.

The predicted flexural strength from the AISC stud strength model was 469.2 k-ft and from the new stud strength model was 424.3 k-ft. The ultimate load applied to the beam was 104.5 k, which equates to an experimental flexural strength of 412.1 k-ft. At this maximum moment, there was a midspan deflection of 7.88 in. and an average slip of 0.176 in.

Plots of total load vs. deflection and total load vs. slip are shown in Figs. 7.4 - 7.5.

A photo of the failed specimen is shown in Fig. 7.6. Failure occurred by yielding of the steel beam. Web yielding of the steel beam is shown in Fig. 7.7. Yielding of the bottom flange was observed at a total load of 72.81 k. Diagonal yield lines were observed on the web at 90.18 k, with significant yielding at 102.9 k. Cracking noises were heard after the maximum load was reached. While waiting to apply the next increment of load, a large longitudinal crack suddenly formed down the centerline of the beam. When this crack formed, the load fell from 104.1 k to 93.69 k. The beam was then loaded to 98.18 k, at which the beam had deflected a total of 8.75 in. Testing was terminated because of the large deflections. The slab was removed after testing so that the studs could be observed. All studs remained attached to the steel beam upon failure

of the specimen. A photo of a deformed stud after removal of the slab is shown in Fig. 7.8.

The formation of the crack could have affected the beam strength. The experimental strength of the studs, which was back-calculated from the flexural strength, was 17.7 k per stud. The stud strength obtained from push-out tests with similar parameters was 20.0 k (Lyons' Tests D2-D3). The predicted stud strength from AISC was 29.5 k per stud, and the new predicted stud strength was 20.1 k per stud.

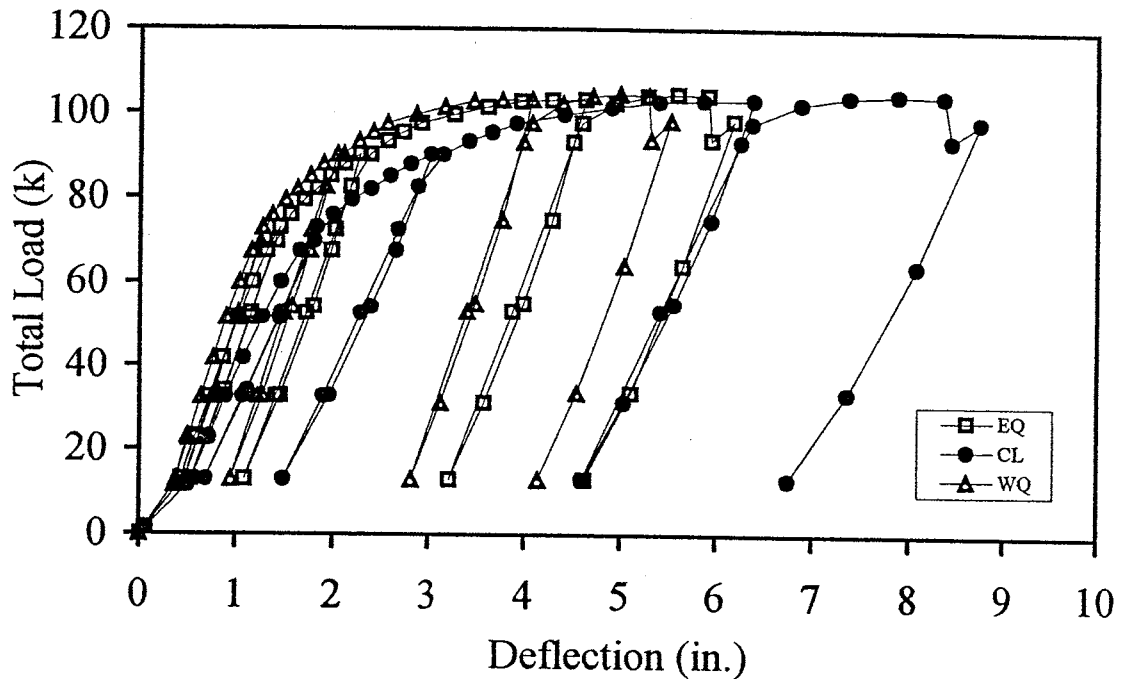
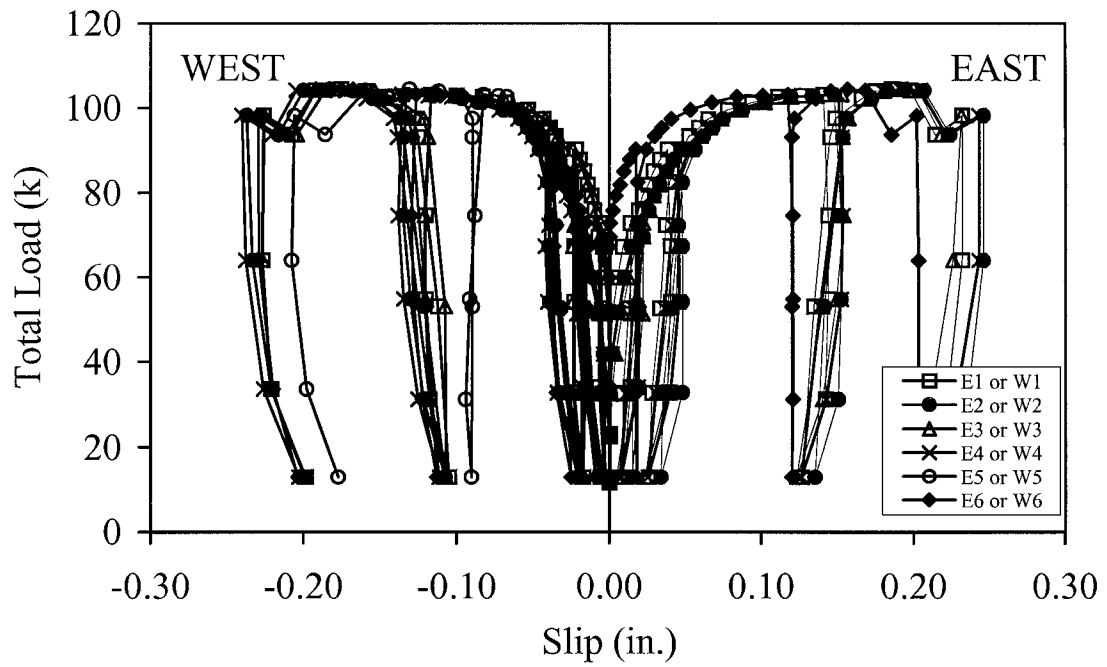


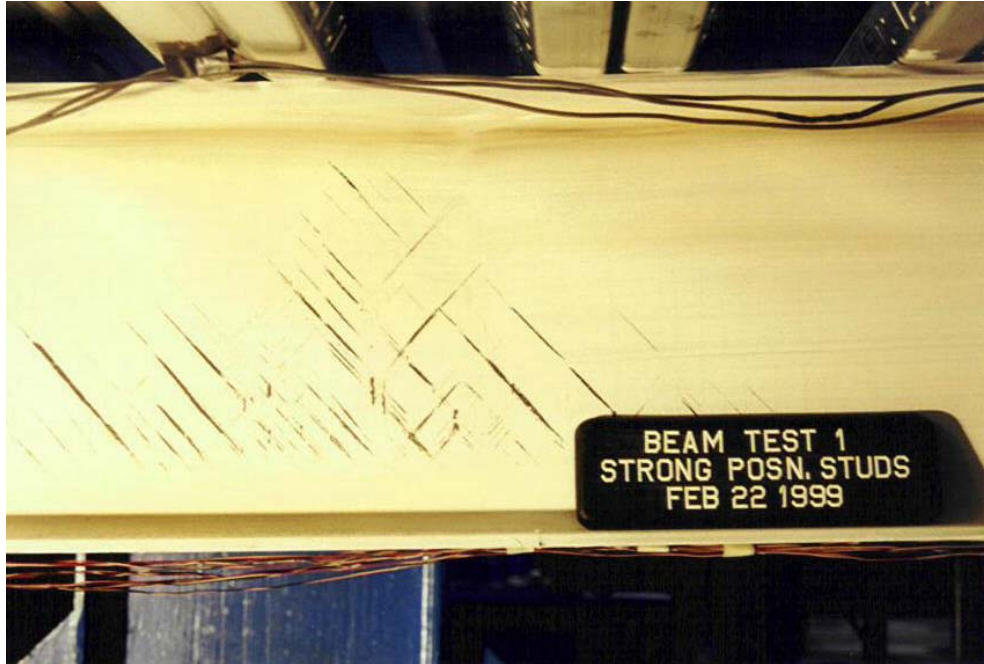
Fig. 7.4 Beam Test 1 – Total Load vs. Deflection



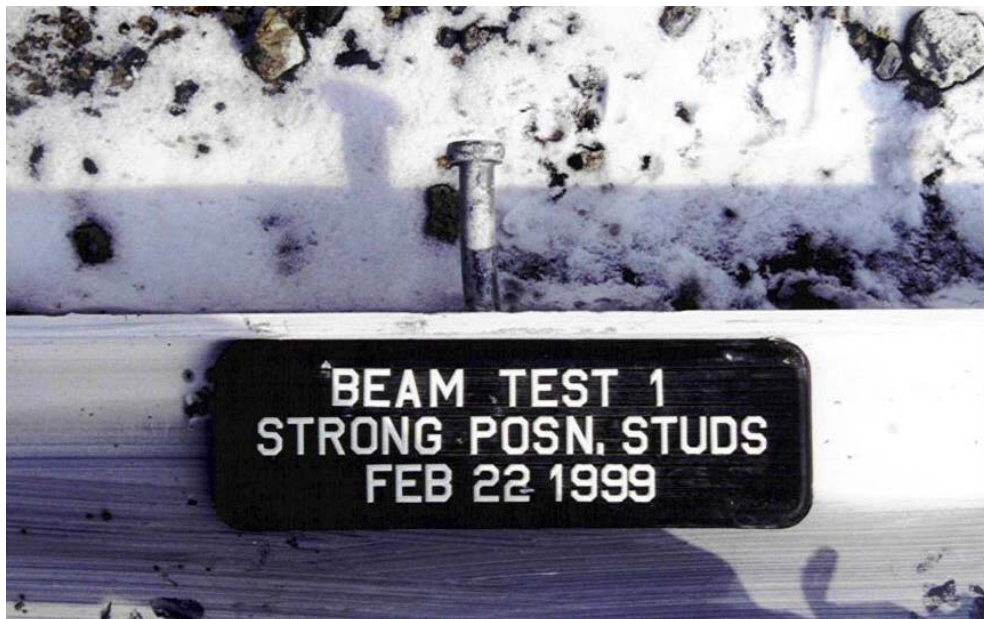
**Fig. 7.5 Beam Test 1 - Total Load vs. Slip**



**Fig. 7.6 Beam Test 1 Showing Large Deflections**



**Fig. 7.7 Beam Test 1 Showing Web Yielding**



**Fig. 7.8 Beam Test 1 Showing Deformed Stud After Removal of Concrete Slab and Steel Deck**

### 7.6.3 Beam Test 2

The second beam had single studs welded in the weak position. There were 28 studs total, with 12 studs in each “shear span”, between zero and maximum moments. The concrete strength was 4840 psi, with a unit weight of 141.1 pcf. The studs had an ultimate strength, which was supplied by the manufacturer, of 66.8 ksi. The flanges of the W16x31 beam had yield and ultimate strengths of 54.3 ksi and 72.6 ksi, respectively. The web had yield and ultimate strengths of 58.2 ksi and 72.4 ksi, respectively.

The predicted moment of inertia was  $1003 \text{ in}^4$ . The experimental moment of inertia was  $1013 \text{ in}^4$ .

The predicted flexural strength from the AISC stud strength model was 468.7 k-ft and from the new stud strength model was 389.2 k-ft. The ultimate load applied to the beam was 96.20 k, which equates to an experimental flexural strength of 379.0 k-ft. At this maximum moment, there was a midspan deflection of 7.88 in. and an average slip of 0.268 in.

Plots of total load vs. deflection and total load vs. slip are shown in Figs. 7.9 - 7.10.

Failure occurred by yielding of the steel beam. Yielding of the bottom flange was observed at a total load of 73.69 k. Web yielding was observed on the web at 84.30 k, with significant yielding at 94.65 k. Deck bulging at the location of the studs was observed at 95.47 k. Testing was terminated, at a midspan deflection of 9.57 in., because of the large deflections. The slab was removed after testing so that the studs could be observed. All studs remained attached to the steel beam upon failure of the specimen.

The experimental strength of the studs, which was back-calculated from the flexural strength, was 12.8 k per stud. The stud strength obtained from push-out tests with similar parameters was 14.3 k (Tests D82-D84 in this study). The predicted stud strength from AISC was 29.5 k per stud, and the new predicted stud strength was 14.2 k per stud.

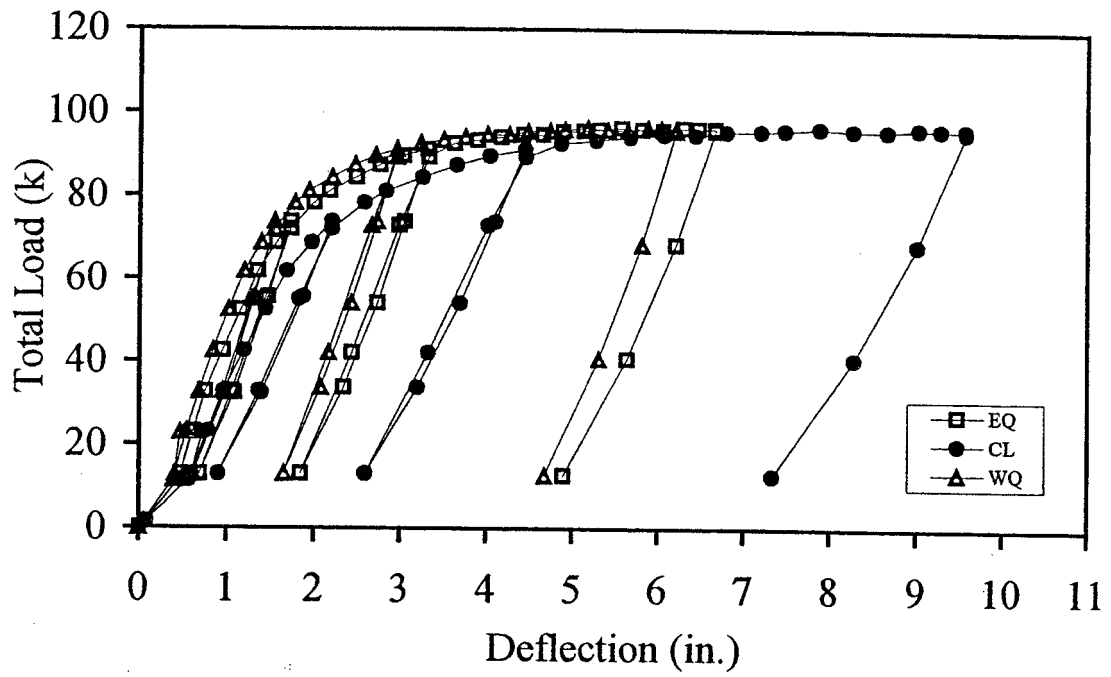
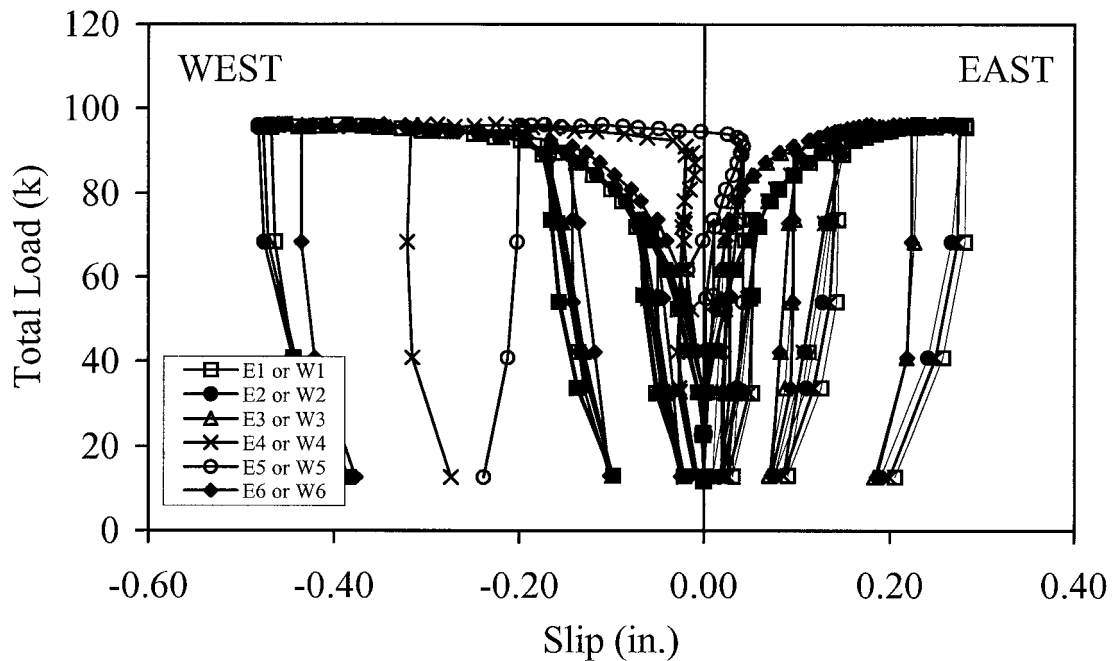


Fig. 7.9 Beam Test 2 – Total Load vs. Deflection



**Fig. 7.10 Beam Test 2 - Total Load vs. Slip**

#### 7.6.4 Beam Test 3

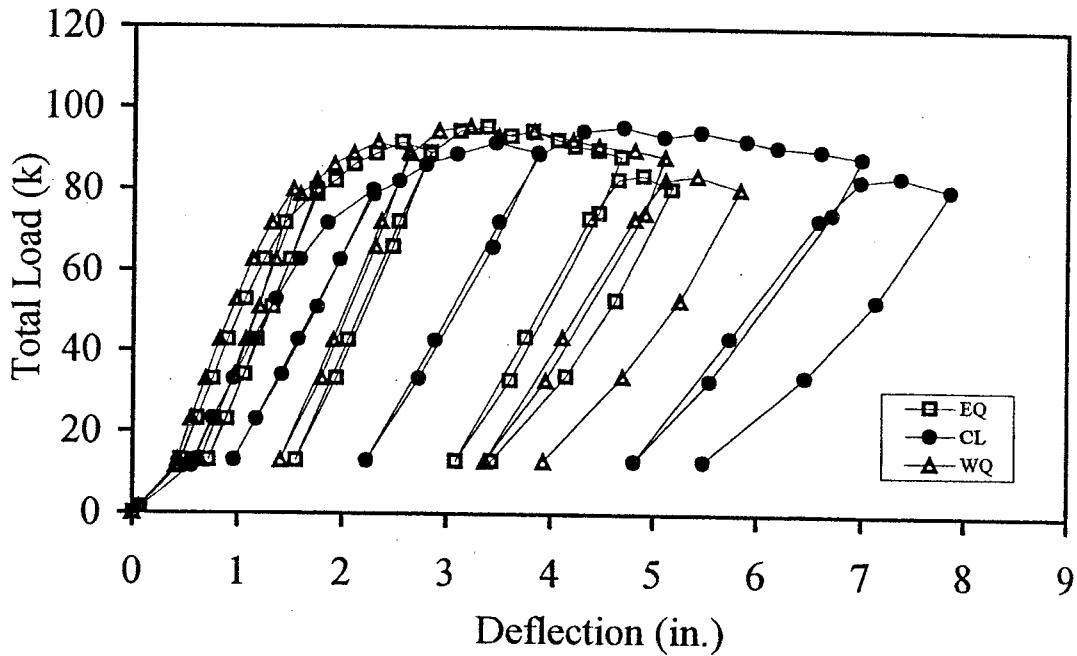
The third beam had studs welded in pairs in the strong position. There were 28 studs total, with 12 studs in each “shear span”, between zero and maximum moments. The concrete strength was 5610 psi, with a unit weight of 143.4 pcf. The studs had an ultimate strength, which was supplied by the manufacturer, of 66.8 ksi. The flanges of the W16x31 beam had yield and ultimate strengths of 54.3 ksi and 72.6 ksi, respectively. The web had yield and ultimate strengths of 58.2 ksi and 72.4 ksi, respectively.

The predicted moment of inertia was 1033 in<sup>4</sup>. The experimental moment of inertia was 1132 in<sup>4</sup>.



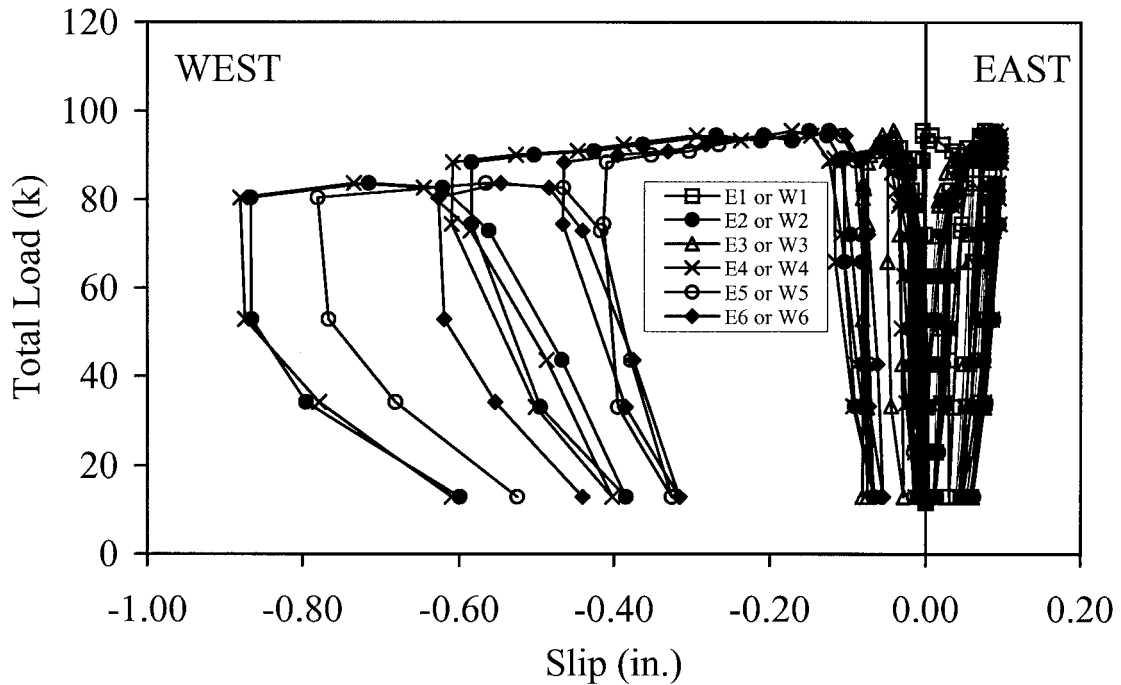
The predicted flexural strength from the AISC stud strength model was 470.8 k-ft and from the new stud strength model was 408.8 k-ft. The ultimate load applied to the beam was 95.48 k, which equates to an experimental flexural strength of 376.1 k-ft. At this maximum moment, there was a midspan deflection of 4.70 in. and an average slip of 0.096 in.

Plots of total load vs. deflection and total load vs. slip are shown in Figs. 7.11 - 7.12.



**Fig. 7.11 Beam Test 3 – Total Load vs. Deflection**

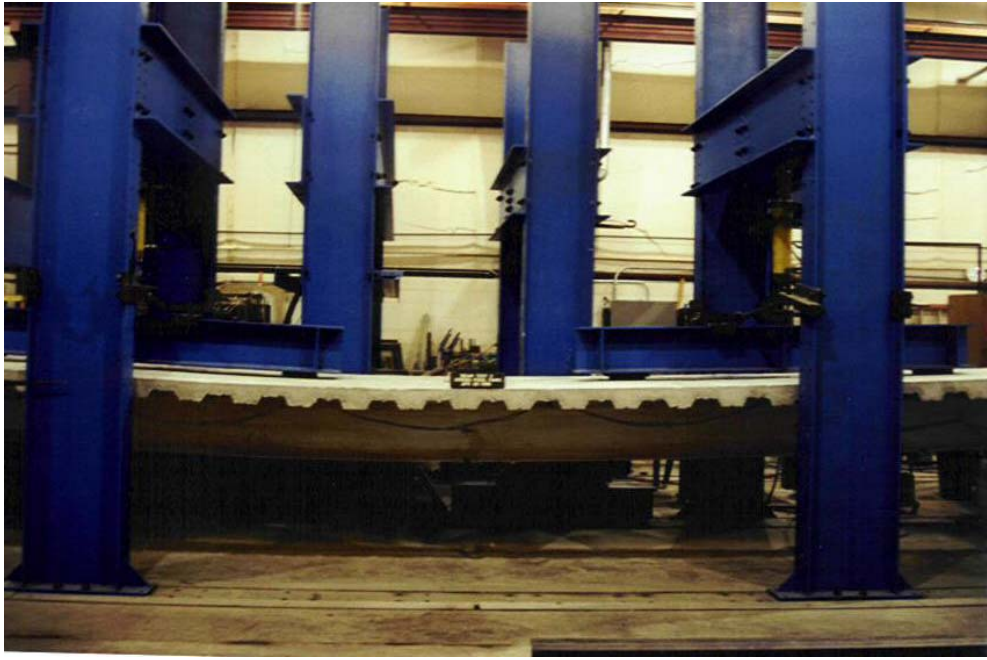
A photo of the failed specimen is shown in Fig. 7.13. Failure occurred by yielding of the steel beam. Yielding of the bottom flange was observed at a total load of 71.58 k. Popping noises were heard at a total load of 78.68 k and again at 88.79 k, before ultimate load was reached. A large crack, transverse to the beam, formed in the slab at a



**Fig. 7.12 Beam Test 3 - Total Load vs. Slip**

load of 89.28 k and is shown in Fig. 7.14. The ultimate load of 95.48 k was reached, and shortly after this, cracks formed around the pair of studs closest to the west end. Significant deck debonding occurred thereafter. Testing was terminated, at a midspan deflection of 7.86 in., because of the large deflections.

The formation of the crack could have affected the beam strength. The experimental strength of the studs, which was back-calculated from the flexural strength, was 12.4 k per stud. The stud strength obtained from push-out tests with similar parameters was 15.5 k (Lyon's Tests D73-D75). The predicted stud strength from AISC was 29.5 k per stud, and the new predicted stud strength was 17.1 k per stud.



**Fig. 7.13 Beam Test 3 Showing Large Deflections**



**Fig. 7.14 Beam Test 3 with Large Crack Transverse to the Beam**

The slab was removed after testing so that the studs could be observed. All studs, except for the third pair of studs from the west end, remained attached to the steel beam upon failure of the specimen. It appears that one of the studs pulled out of the beam flange because of an inadequate weld; failure of this stud caused the adjacent stud to fail in shear. It is believed that these studs failed well before the ultimate load was reached, when the two distinct popping noises, described previously, were heard.

One could argue that the flexural strengths should be calculated using the ten remaining studs, instead of the original 12 on the beam. Using ten studs, AISC predicts a capacity of 448.8 k-ft, and the new method predicts a capacity of 390.1 k-ft. The new prediction for the capacity is 390.1 k-ft, 3.7% more than the experimental capacity of 376.1 k-ft. Also, using ten studs gives a back-calculated stud strength of 14.8 k. It is interesting to note that if the stud strength of 15.5 k from push-out tests is used, along with ten studs, the flexural strength is 380.4 k-ft, which is 1% more than the experimental capacity.

## **7.7 Discussion of VT Composite Beam Test Results**

### **7.7.1 General**

The purpose of the composite beam tests reported in this chapter was to investigate the effect on stud strength of the stud position in the rib and of placing the studs in pairs. These tests are similar to those tests using 3 in. deck reported by Gibbings et al (1993), except that the tests in this chapter used 2 in. deck. Therefore, this section is

a discussion of the tests by Gibbings et al (1993) and the tests reported in Section 7.6; a summary of these tests is given in Tables 7.2 and 7.3.

In this section, both the experimental flexural strength and stud strength will be compared to both the AISC and the new predictions. It is important to note that the experimental flexural strengths were obtained directly from the beam tests, but the experimental stud strengths were back-calculated from the flexural strengths. It was stated previously that the flexural strength of a beam is not very sensitive to the stud strength, which means that the back-calculated stud strength cannot be precisely calculated from the flexural strength. A slight error in the experimental flexural strength may cause a large error in the back-calculated stud strength.

It should also be emphasized that the purpose of evaluating the beam tests is not to investigate the effects of different parameters on stud strength, because this was done using push-out tests. Instead, the purpose is to validate the new stud strength prediction model and to be sure that it gives reliable results for beam flexural strengths.

### **7.7.2 AISC Predictions of Flexural Strength**

The experimental flexural strengths were all less than the AISC predictions, as seen by the ratios  $M_e/M_{AISC}$  in Table 7.2. For the tests using 3 in. deck, the average ratio was 0.94; and for the tests using 2 in. deck, the average ratio was 0.83. (This ratio increases to 0.84 if ten studs instead of 12 are used in the west shear span for Test 3. Refer to Section 7.6.4 for explanation).

**Table 7.2 Summary of Bending Strengths in Composite Beam Tests at VT**

Test Program	Test Designation	Stud Position	$M_{AISC}$ (k-ft)	$M_c$ (k-ft)	$M_e$ (k-ft)	$M_e/M_{AISC}$	$M_e/M_c$
Gibbings et al (1993)	1	S	324.6	290.7	305.7	0.94	1.05
Gibbings et al (1993)	2	W	298.9	262.3	272.9	0.91	1.04
Gibbings et al (1993)	3	Alt	282.7	281.4	282.5	1.00	1.00
Gibbings et al (1993)	4	Alt	333.9	289.2	303.2	0.91	1.05
Rambo-Roddenberry	1	S	469.2	424.3	412.1	0.88	0.97
Rambo-Roddenberry	2	W	468.7	389.2	379.0	0.81	0.97
Rambo-Roddenberry	3	2S	470.8 <sup>+</sup>	408.8 <sup>++</sup>	376.1	0.80	0.92
$M_{AISC}$ = Predicted flexural strength using AISC stud strength model $M_c$ = Predicted flexural strength using new stud strength model $M_e$ = Experimental flexural strength <sup>+</sup> 448.8 k-ft if use 10 studs instead of 12 (see Sec. 7.6.4) <sup>++</sup> 390.1 k-ft if use 10 studs instead of 12 (see Sec. 7.6.4)							

**Table 7.3 Summary of Stud Strengths in Composite Beam Tests at VT**

Test Program	Test Designation	Stud Position	$Q_{AISC}$ (k)	$Q_c$ (k)	$Q_{po}^{\sim}$ (k)	$Q_{bc}$ (k)	$Q_{bc}/Q_{AISC}$	$Q_{bc}/Q_{po}$	$Q_{bc}/Q_c$
Gibbings et al (1993)	1	S	28.6	19.5	18.82	23.3	0.81	1.24	1.19
Gibbings et al (1993)	2	W	22.6	13.7	13.55	16.1	0.71	1.19	1.18
Gibbings et al (1993)	3	Alt	17.5*	17.2*	16.19*	17.4*	0.99	1.07	1.01
Gibbings et al (1993)	4	Alt	28.6*	17.2*	16.19*	20.4*	0.71	1.26	1.19
Rambo-Roddenberry	1	S	29.5	20.07	20.0	17.65	0.60	0.88	0.88
Rambo-Roddenberry	2	W	29.5	14.17	14.3	12.78	0.43	0.89	0.90
Rambo-Roddenberry	3	2S	29.5	17.06	15.5	12.36 <sup>++</sup>	0.42	0.80	0.72
$Q_{AISC}$ = Predicted stud strength using AISC stud strength model $Q_c$ = Predicted stud strength using new stud strength model $Q_{po}$ = Experimental stud strength from push-out tests $Q_{bc}$ = Experimental stud strength back-calculated from flexural strength <sup>~</sup> Values not normalized with concrete strength <sup>*</sup> Average of strong and weak position studs <sup>+++</sup> 14.83 k if use 10 studs instead of 12 (see Sec. 7.6.4)									

### 7.7.3 New Predictions for Flexural Strength

The new predicted flexural strengths were more conservative than the AISC predictions, as seen by the ratios  $M_e/M_c$  in Table 7.2. For the 3 in. tests, the average ratio of the experimental moment to new predicted moment,  $M_e/M_c$ , was 1.04. For the 2 in. tests, this ratio was 0.95, which increases to 0.97 if ten studs instead of 12 are used in the west shear span for Test 3 (see Section 7.6.4).

### 7.7.4 AISC Predictions for Stud Strength

The AISC predictions for stud strength were all unconservative, as seen by the ratios  $Q_{bc}/Q_{AISC}$  in Table 7.3. The best prediction was for Gibbings' Test 3, for which the experimental stud strength-to-AISC predicted stud strength ratio ( $Q_{bc}/Q_{AISC}$ ) was 0.99. This test used concrete with a relatively low strength of 2280 psi, compared to the other tests which had strengths over 4800 psi (except for Gibbings' Test 2, with a strength of 3200 psi). The AISC predictions for the other three tests using 3 in. deck were more unconservative, with an average experimental-to-predicted ratio of 0.74. The AISC predictions for the tests using 2 in. deck were extremely unconservative. The single strong position studs had an experimental-to-predicted ratio of 0.60, the weak position studs had a ratio of 0.43, and the pairs of strong position studs had a ratio of 0.42.

### 7.7.5 New Predictions for Stud Strength

The new stud strength predictions are much more conservative than the AISC predictions, as seen by the ratios  $Q_{bc}/Q_c$  in Table 7.3. The average ratio of experimental

stud strength-to-new predicted stud strength is 1.14 for the 3 in. tests and 0.83 for the 2 in. tests.

Gibbings et al (1993) noted that push-out tests provide a reliable method of finding stud strengths and can be used to accurately predict the flexural strength of a beam. Table 7.3 shows the stud strengths  $Q_{po}$  from push-out tests, which each had similar parameters as its corresponding beam test. The average ratio of experimental stud strength-to-push-out prediction was 1.19 for the 3 in. tests and 0.86 for the 2 in. tests. These ratios are reasonably close to the experimental-to-new prediction ratios, which was expected because the new prediction method was based on push-out tests.

#### **7.7.6 Effects of Deck Height, Stud Position, and Pairing of Studs on Stud Strength**

From these seven beam tests, one can compare the effects on stud strength of the deck height, stud position, and placing studs in pairs. The comparisons are made in Tables 7.4 – 7.6. From Table 7.4, the strength of the studs in 2 in. deck were about 78% of those in 3 in. deck. From Table 7.5, the strength of the studs in the weak position were an average of 71% of the strength of the studs in the strong position. This was expected, because the weak position studs had a new predicted strength of  $0.48A_sF_u$ , and the strong position studs had a new predicted strength of  $0.68A_sF_u$  (Assuming that  $A_sF_u$  is about the same for all tests,  $0.48A_sF_u/0.68A_sF_u = 0.71$ ). From Table 7.6, the strength of a stud placed in a pair from Test 3 is 70% of the strength of a single stud from Test 1. If 10 studs are used in the west shear span of Test 3 (see Section 7.6.4), this ratio is 0.84. The new stud strength prediction method estimates a ratio of 0.85, and AISC predicts that



there is no difference in strength between a stud placed in pair and a single stud for the parameters of Tests 1 and 3.

**Table 7.4 Comparison of Stud Strengths in 2" and 3" Deck**

Test Program	Test Designation	Stud Position	Deck Ht. (in.)	Q <sub>bc</sub> (k)	Q <sub>bc 2"/</sub> Q <sub>bc 3"</sub>
Gibbings et al (1993)	1	S	3	23.3	0.76
Rambo-Roddenberry	1	S	2	17.65	
Gibbings et al (1993)	2	W	3	16.1	0.79
Rambo-Roddenberry	2	W	2	12.78	

**Table 7.5 Comparison of Stud Strengths in Strong and Weak Positions**

Test Program	Test Designation	Stud Position	Deck Ht. (in.)	Q <sub>bc</sub> (k)	Q <sub>bc w/</sub> Q <sub>bc s</sub>
Gibbings et al (1993)	1	S	2	23.3	0.69
Gibbings et al (1993)	2	W	2	16.1	
Rambo-Roddenberry	1	S	3	17.65	0.72
Rambo-Roddenberry	2	W	3	12.78	

**Table 7.6 Comparison of Strong Position Stud Strengths in Singles and Pairs**

Test Program	Test Designation	Stud Position	Deck Ht. (in.)	Q <sub>bc</sub> (k)	Q <sub>bc 2S/</sub> Q <sub>bc S</sub>
Rambo-Roddenberry	1	S	2	17.65	0.70
Rambo-Roddenberry	3	2S	2	12.36*	
* Value is 14.83 k if use 10 studs instead of 12 (see Sec. 7.6.4). This would make $Q_{bc 2S}/Q_{bc S} = 0.84$					