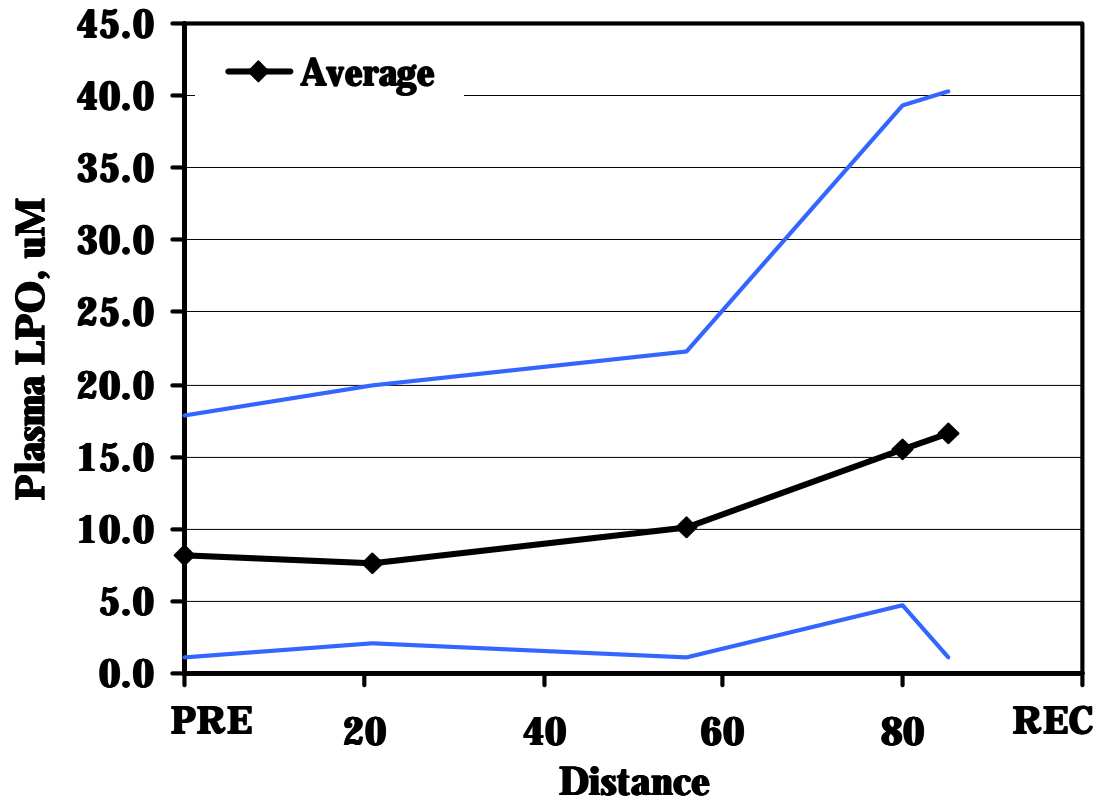


*Figure 1.* Plasma alpha-tocopherol (TOC) concentrations for all 46 horses in the vitamin E and vitamin E plus C groups combined. Thin lines depict the highest and lowest values at each sample, the black line with diamonds is the average.



*Figure 2.* Plasma lipid hydroperoxide (LPO) concentrations for all 46 horses in the vitamin E and vitamin E plus C groups combined. Thin lines depict the highest and lowest values at each sample, the black line with diamonds is the average.

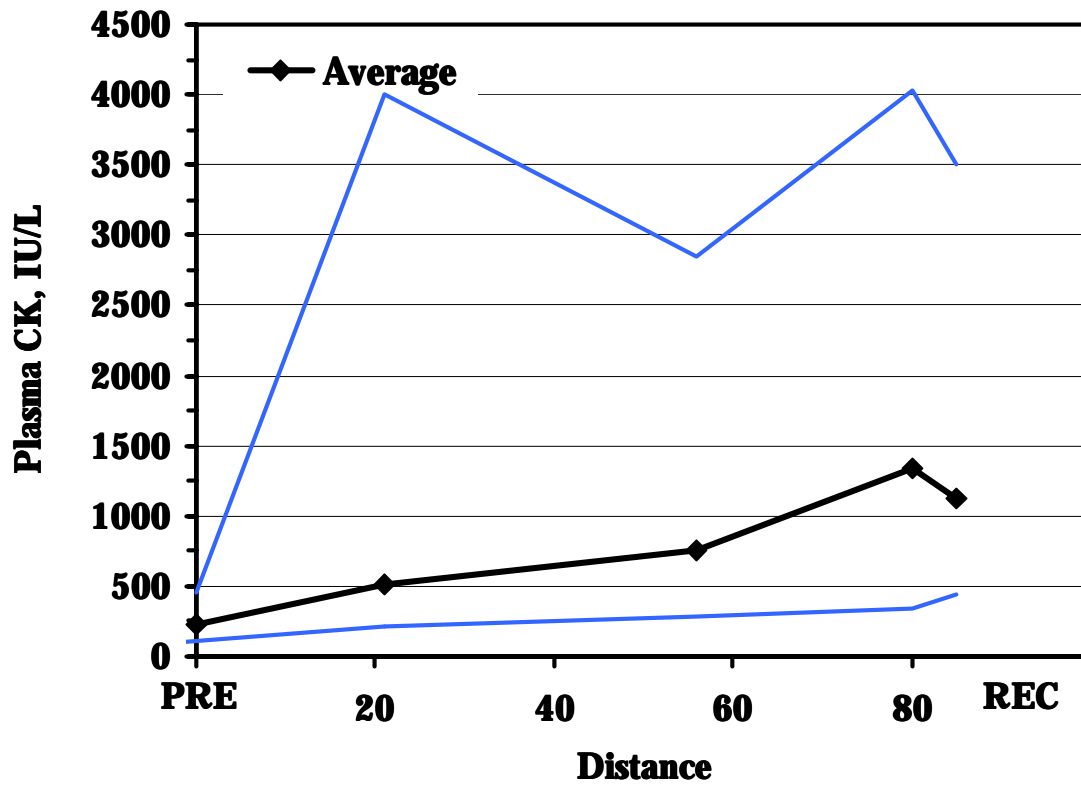
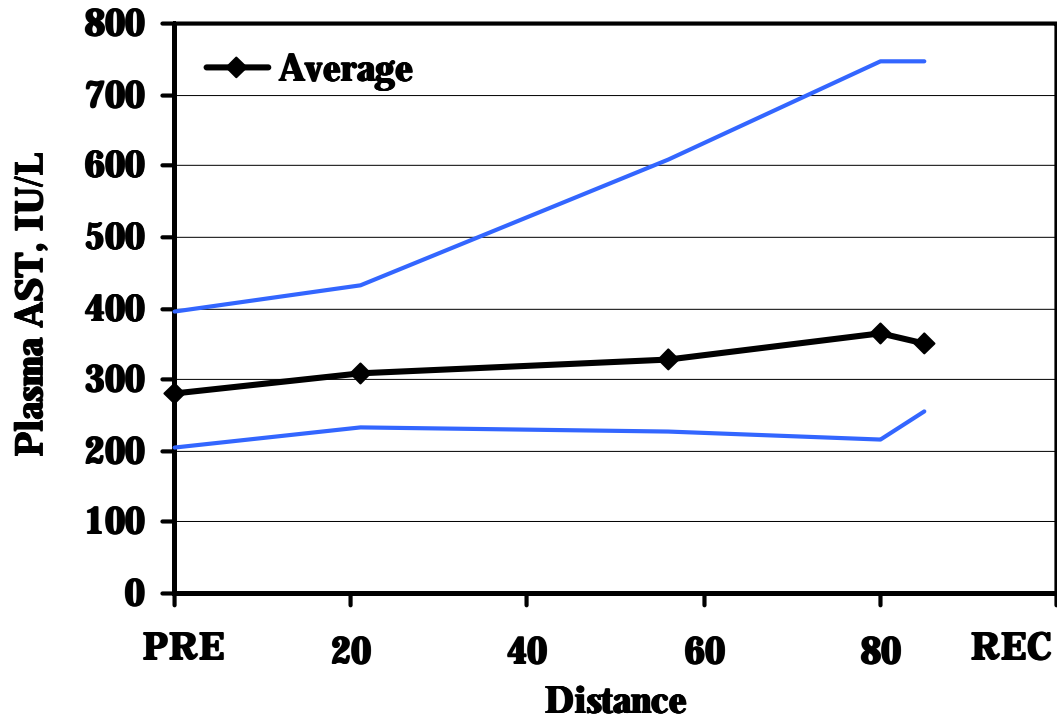


Figure 3. Plasma creatine kinase (CK) concentrations for all 46 horses in the vitamin E and vitamin E plus C groups combined. Thin lines depict the highest and lowest values at each sample, the black line with diamonds is the average.



*Figure 4.* Plasma aspartate aminotransferase (AST) concentrations for all 46 horses in the vitamin E and vitamin E plus C groups combined. Thin lines depict the highest and lowest values at each sample, the black line with diamonds is the average.

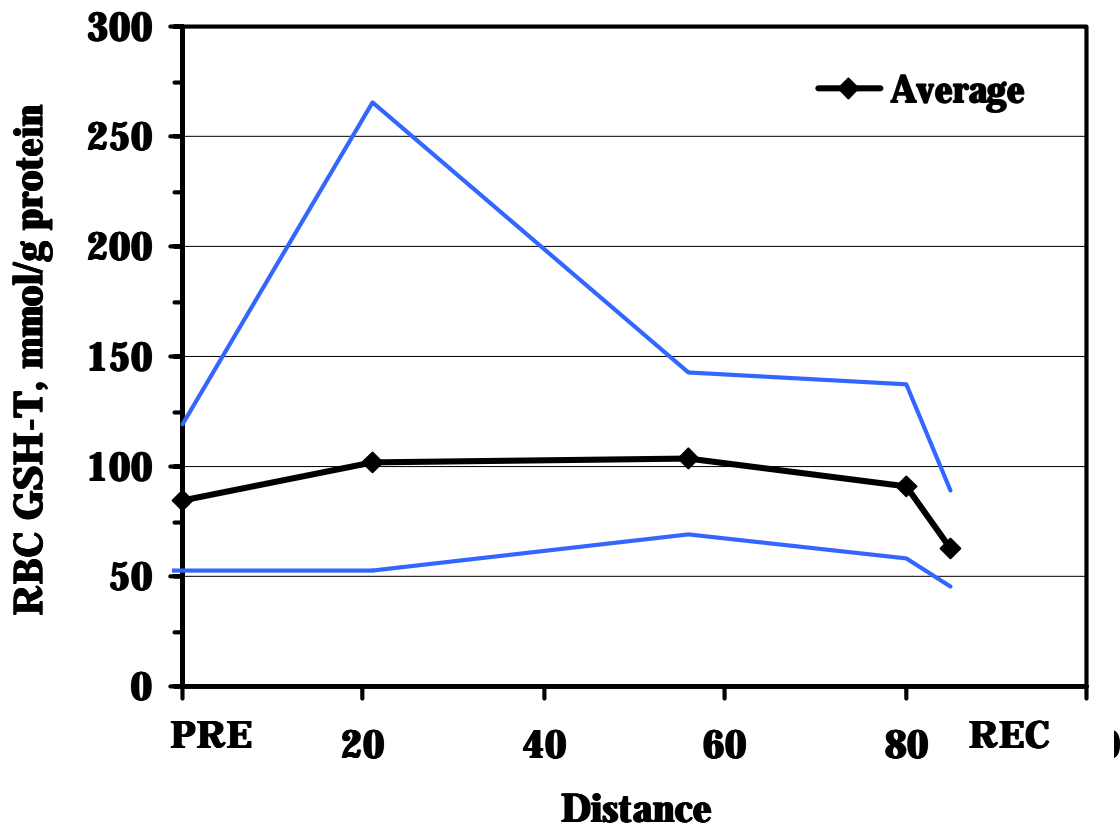
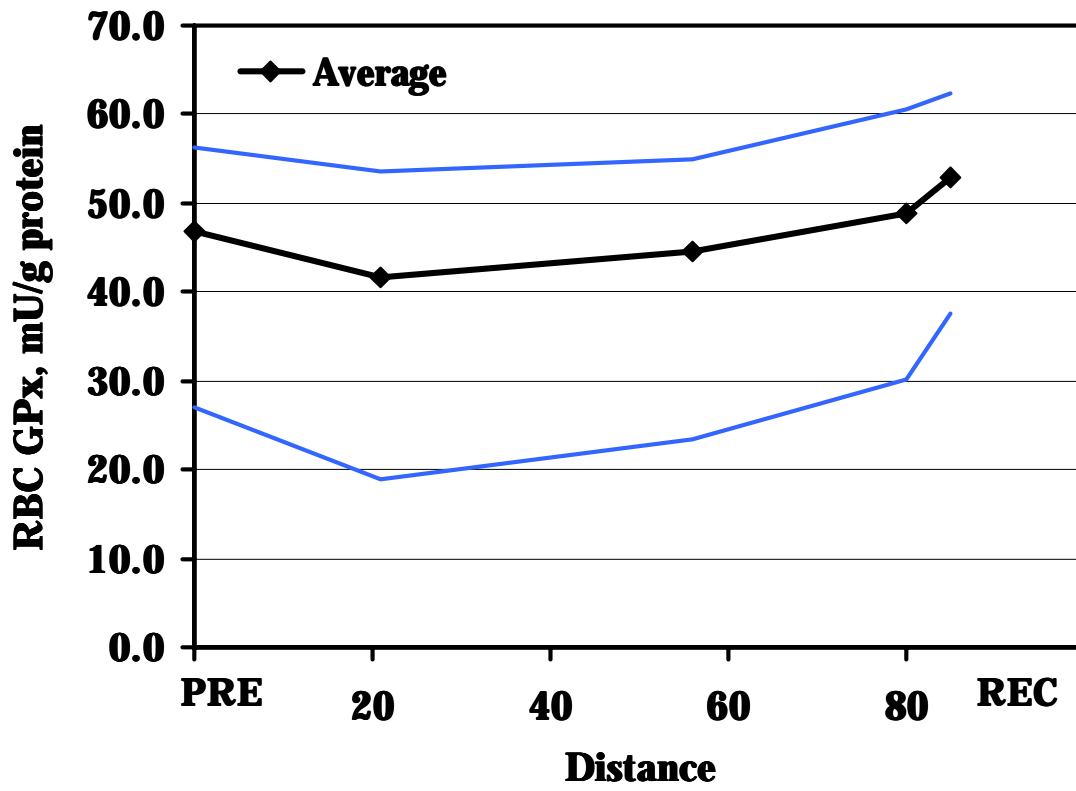
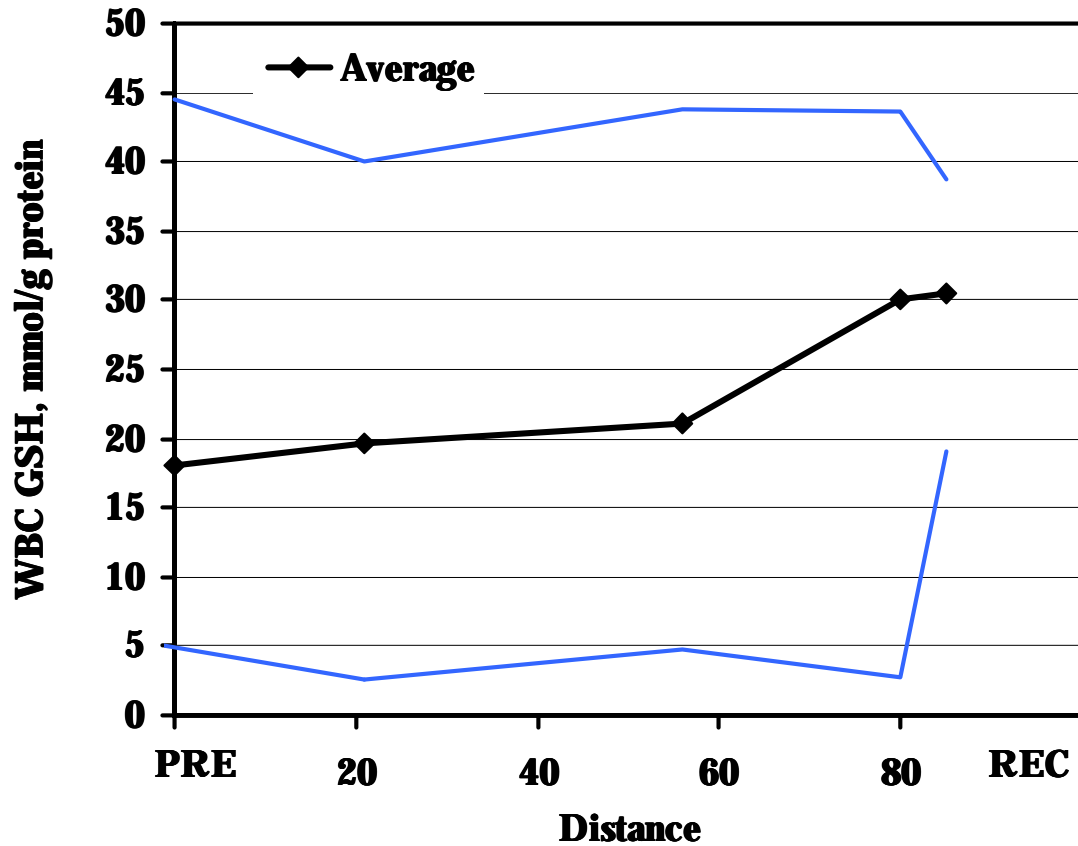


Figure 5. Red blood cell total glutathione (RBC GST-T) concentrations for all 46 horses in the vitamin E and vitamin E plus C groups combined. Thin lines depict the highest and lowest values at each sample, the black line with diamonds is the average.



*Figure 6.* Red blood cell glutathione peroxidase (RBC GPx) concentrations for all 46 horses in the vitamin E and vitamin E plus C groups combined. Thin lines depict the highest and lowest values at each sample, the black line with diamonds is the average.



*Figure 7.* White blood cell total glutathione (WBC GSH-T) concentrations for all 46 horses in the vitamin E and vitamin E plus C groups combined. Thin lines depict the highest and lowest values at each sample, the black line with diamonds is the average.

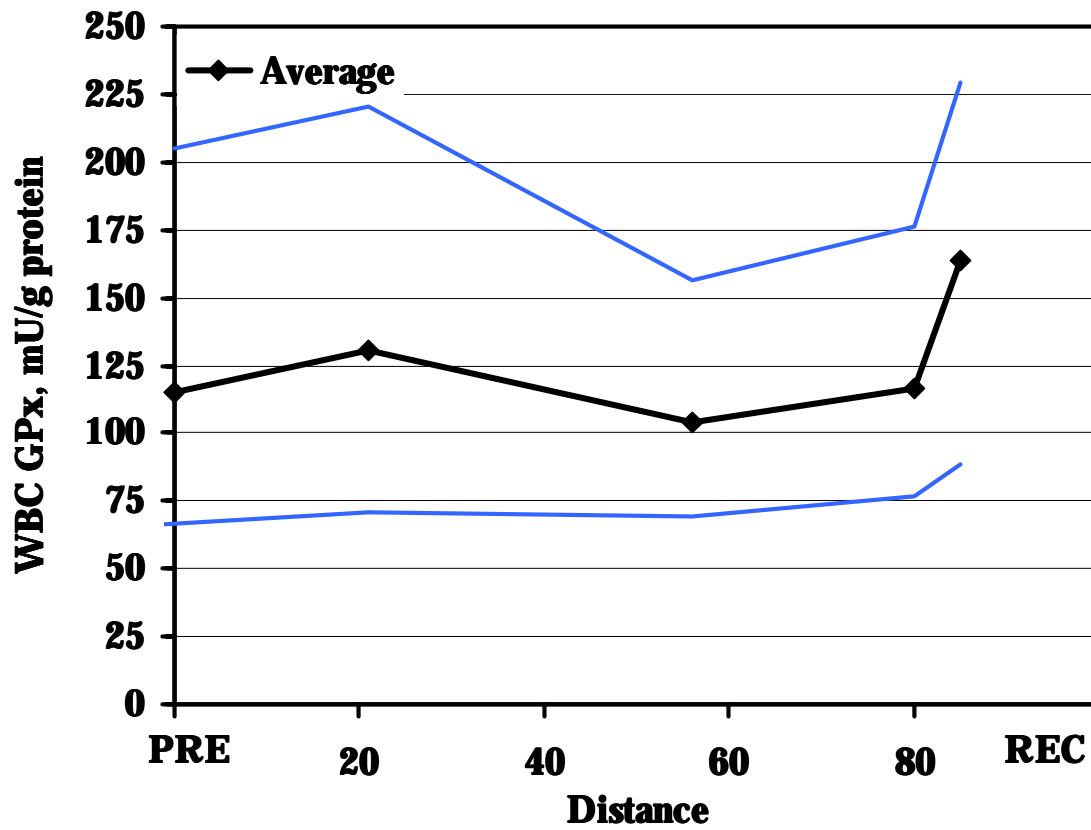


Figure 8. White blood cell glutathione peroxidase (WBC GPx) concentrations for all 46 horses in the vitamin E and vitamin E plus C groups combined. Thin lines depict the highest and lowest values at each sample, the black line with diamonds is the average.