

Figure 13. Plasma lipid hydroperoxide (LPO) concentrations for the control (CON), vitamin E (E), and lipoic acid (LA) groups.

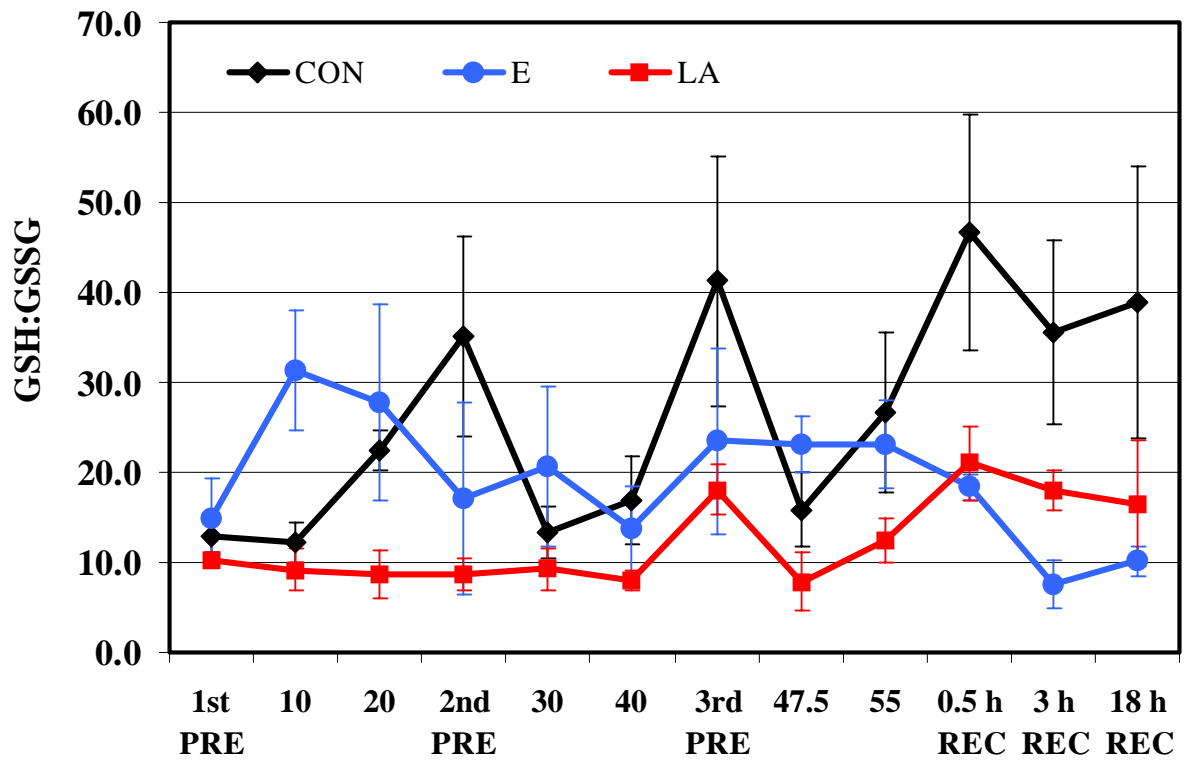


Figure 14. Redox ratio (calculated using $[\text{total glutathione} - 2 * \text{oxidized glutathione (GSSG)}] / \text{GSSG}$) for the control (CON), vitamin E (E), and lipoic acid (LA) groups.

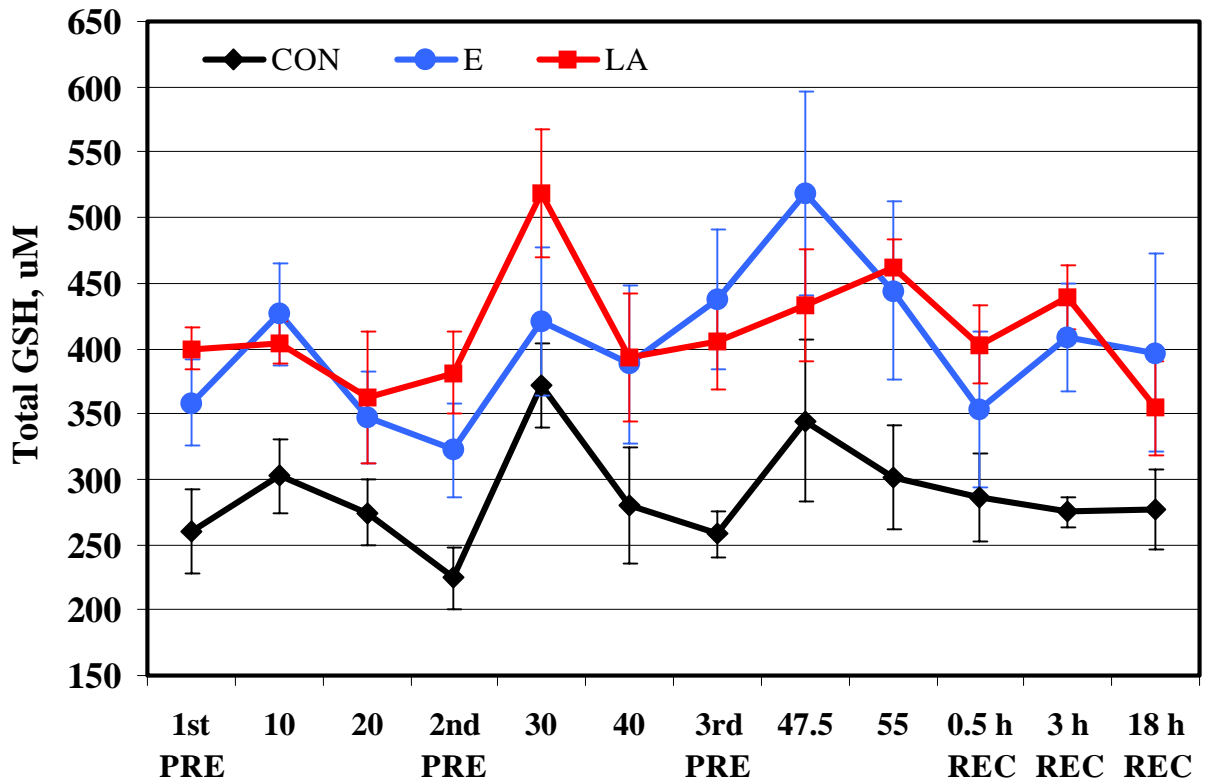


Figure 15. Whole blood total glutathione (GSH) concentrations for the control (CON), vitamin E (E), and lipoic acid (LA) groups.

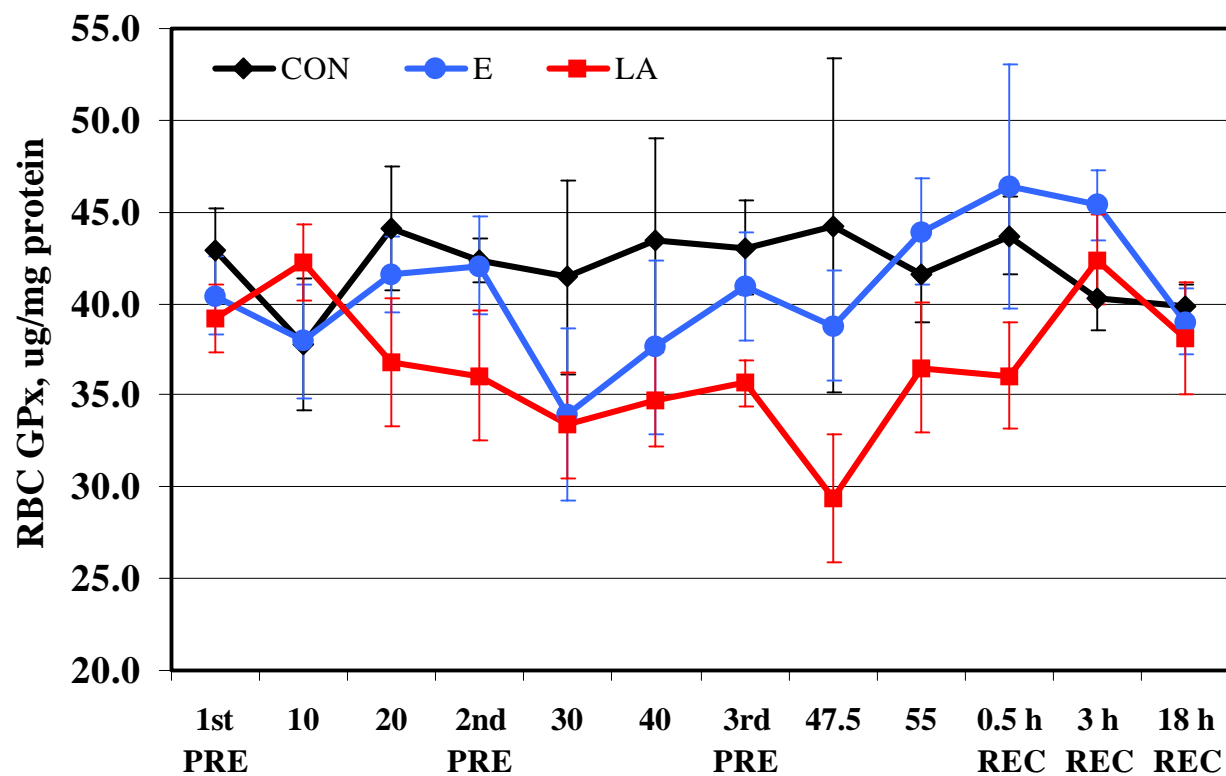


Figure 16. Red blood cell glutathione peroxidase (RBC GPx) concentrations for the control (CON), vitamin E (E), and lipoic acid (LA) groups.

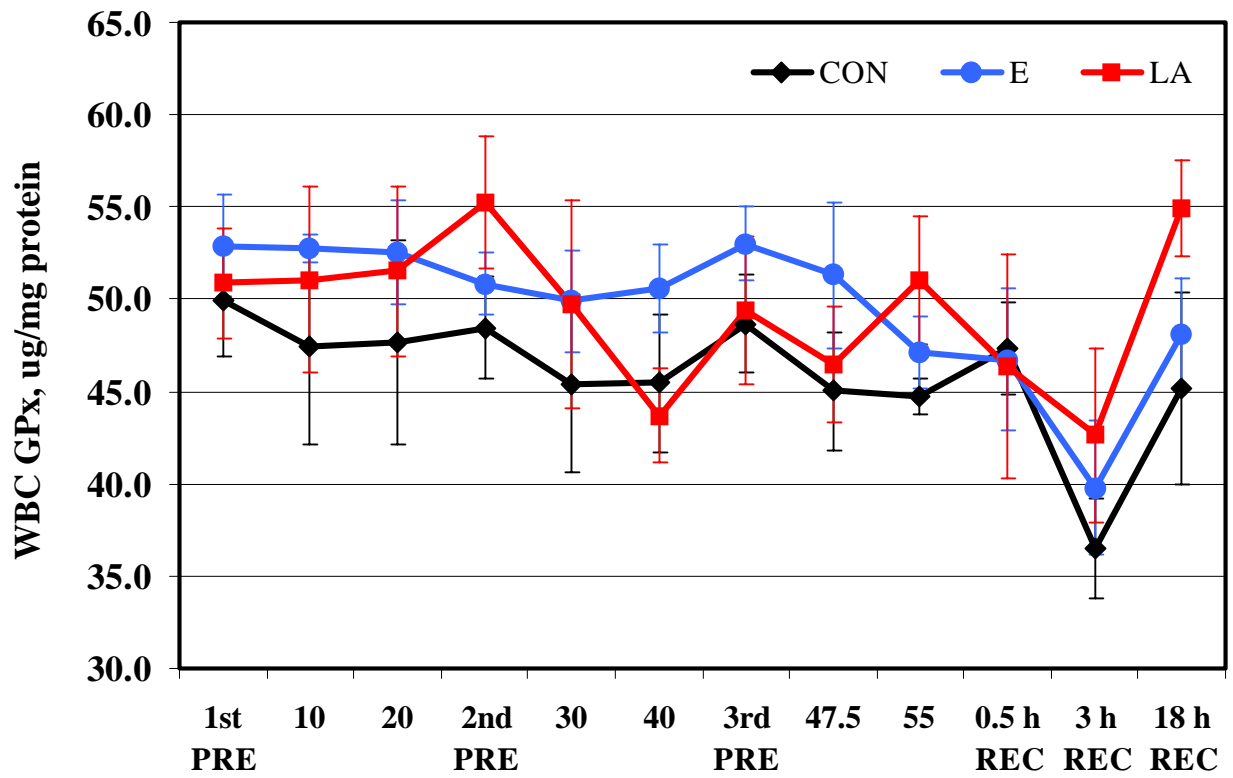


Figure 17. White blood cell glutathione peroxidase (WBC GPx) concentrations for the control (CON), vitamin E (E), and lipoic acid (LA) groups.

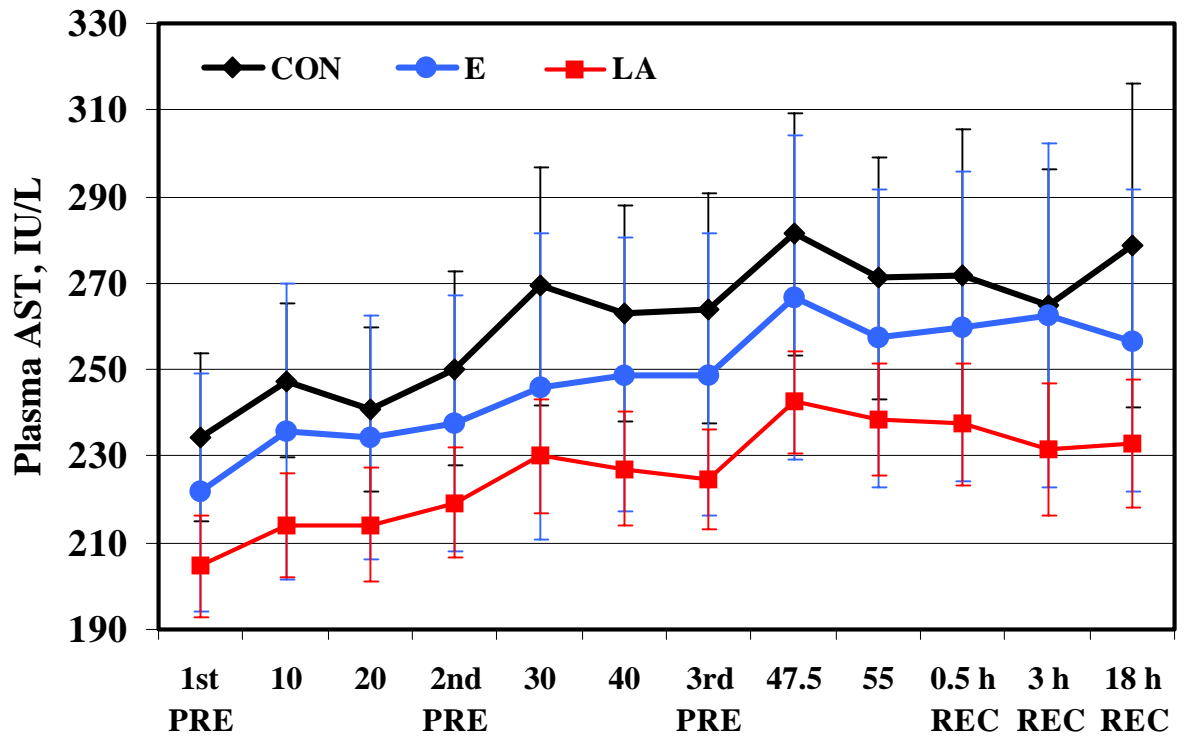


Figure 18. Plasma aspartate aminotransferase (AST) concentrations for the control (CON), vitamin E (E), and lipoic acid (LA) groups.