

APPENDIX C MISCELANEOUS CYLINDER OPERATING SHAPES

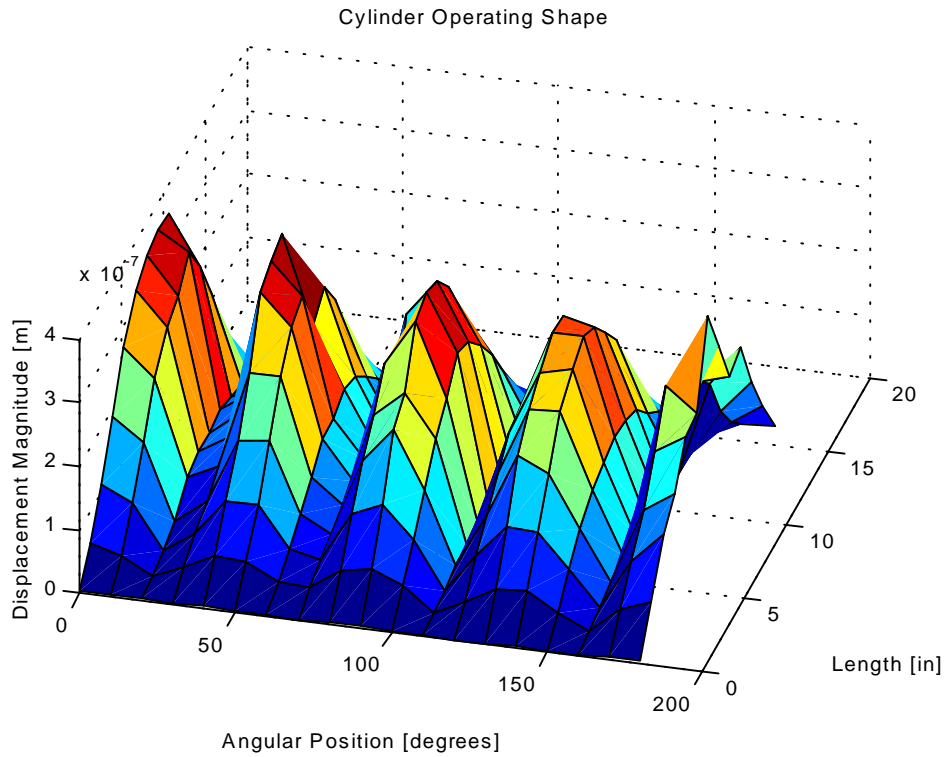


Figure C.1 Cylinder operating shape at 1528 Hz (4,1).

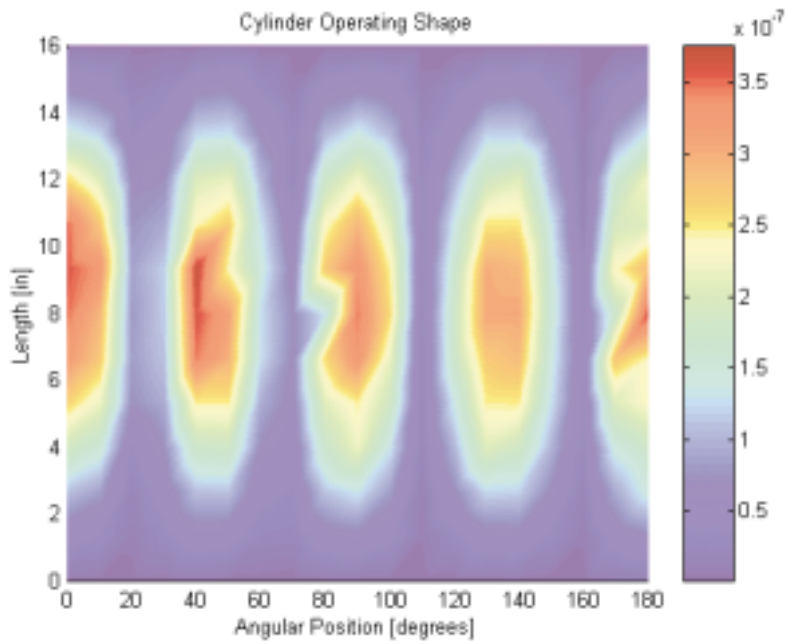


Figure C.2 Cylinder operating shape at 1528 Hz, (displacement magnitude, m).

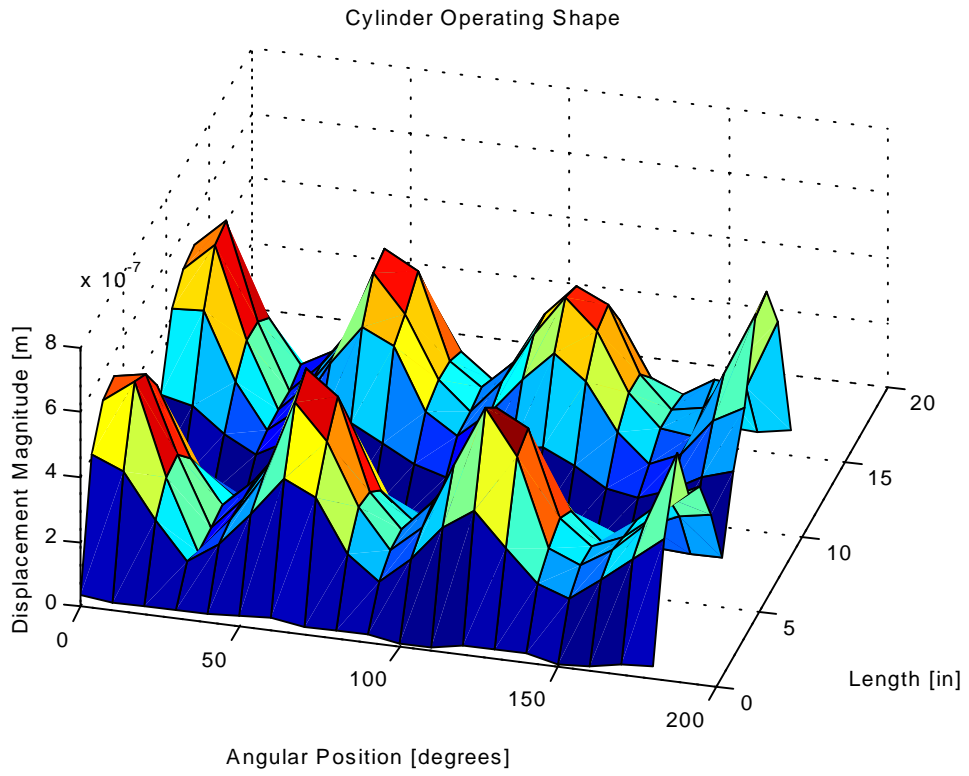


Figure C.3 Cylinder operating shape at 1836 Hz (3,2).

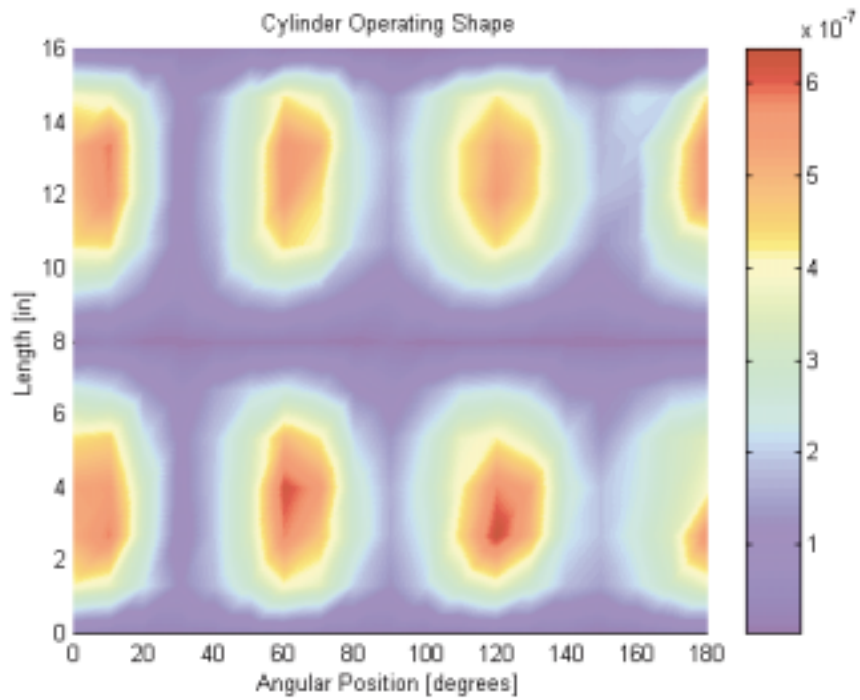


Figure C.4 Cylinder operating shape at 1836 Hz, (displacement magnitude, m).

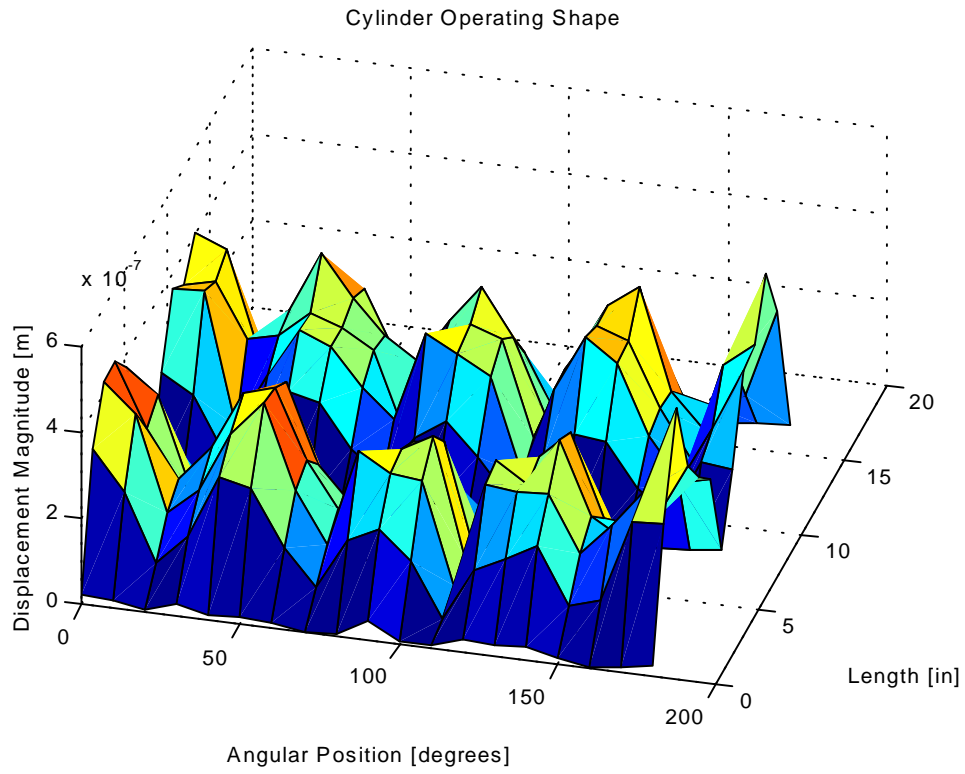


Figure C.5 Cylinder operating shape at 2044 Hz (4,2).

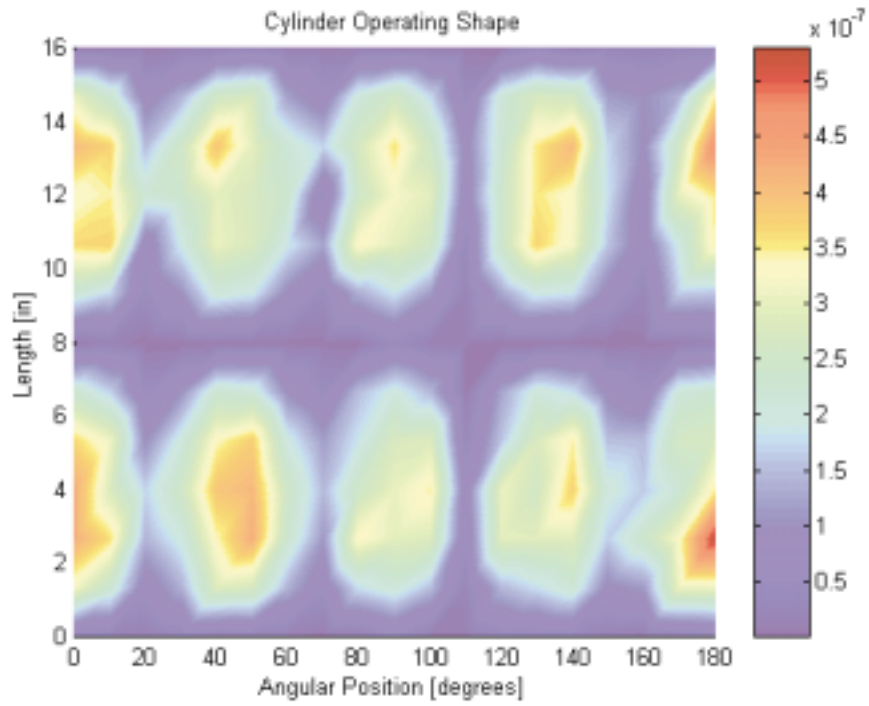


Figure C.6 Cylinder operating shape at 2044 Hz, (displacement magnitude, m).

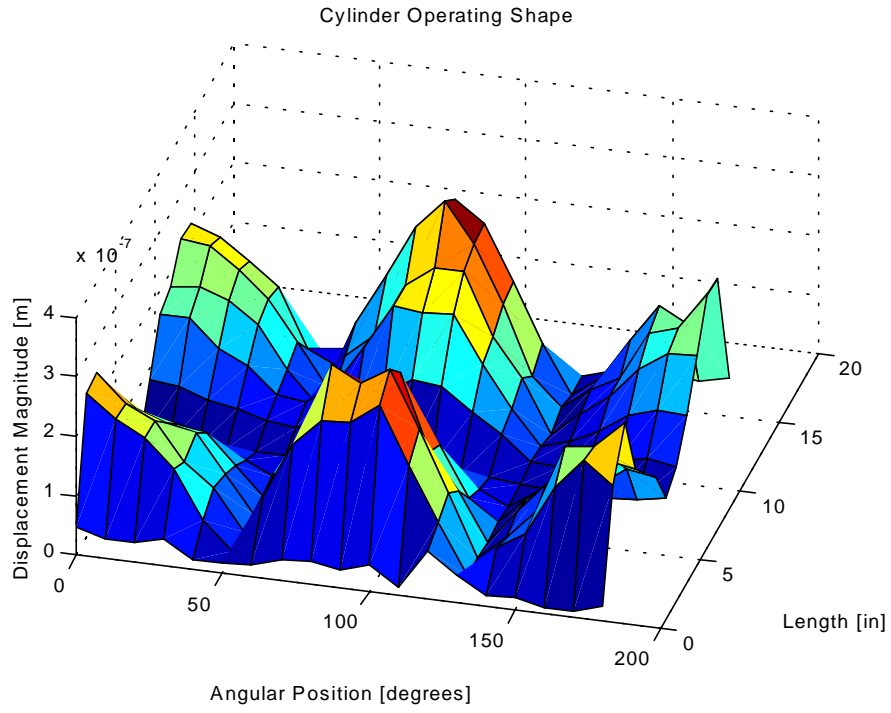


Figure C.7 Cylinder operating shape at 2116 Hz (2,2).

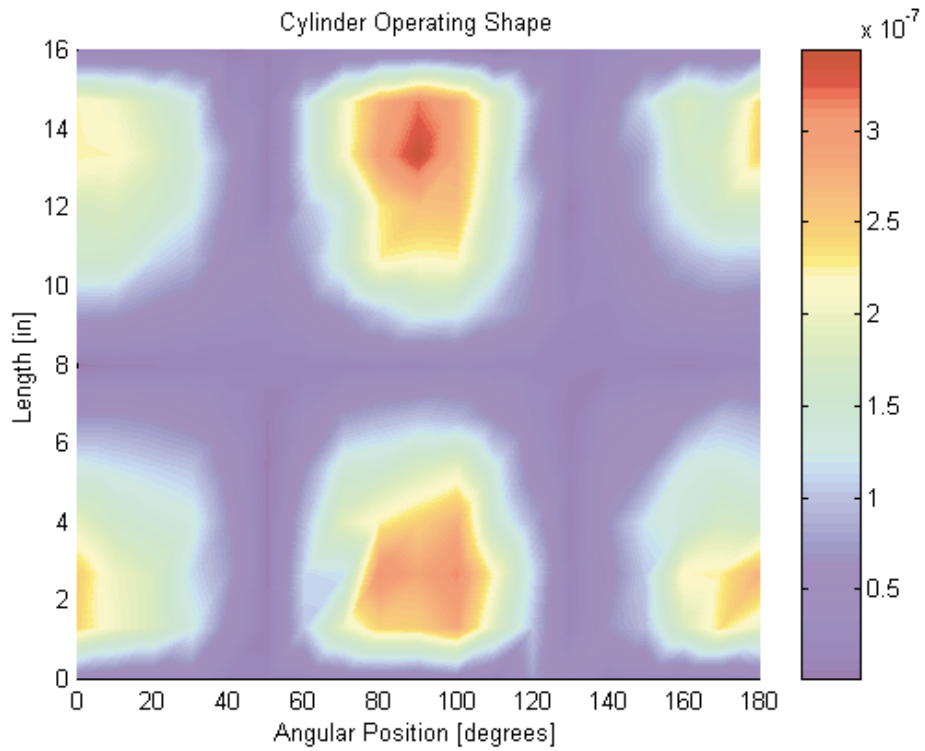


Figure C.8 Cylinder operating shape at 2116 Hz, (displacement magnitude, m).

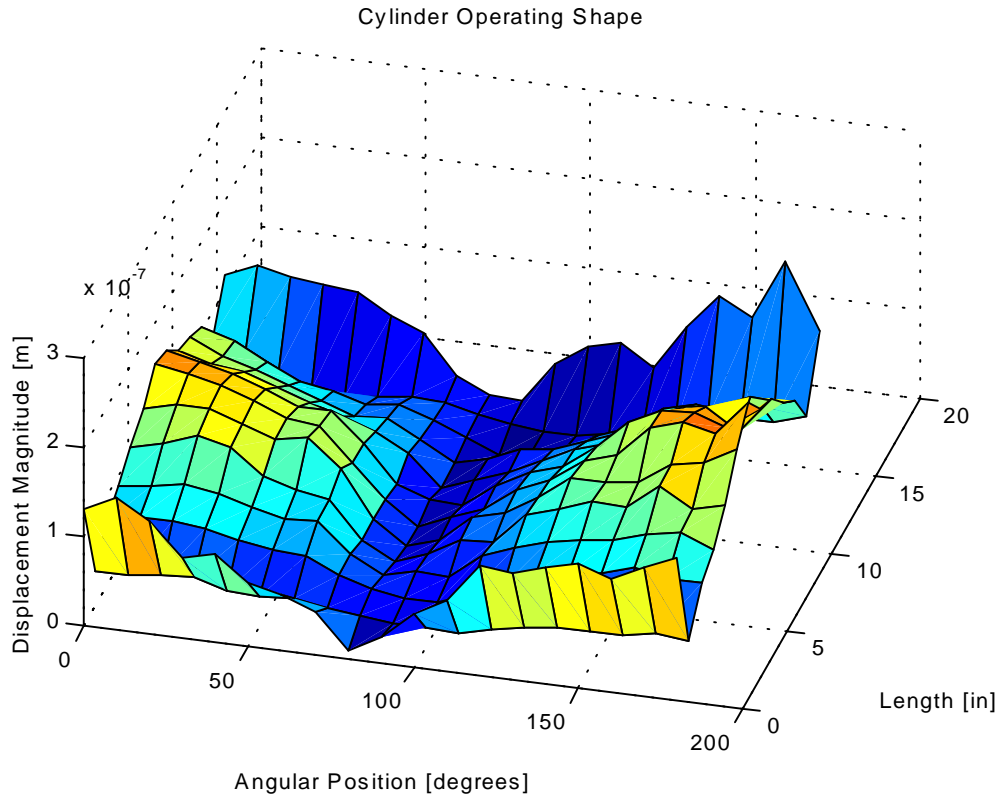


Figure C.9 Cylinder operating shape at 2208 Hz (1,1).

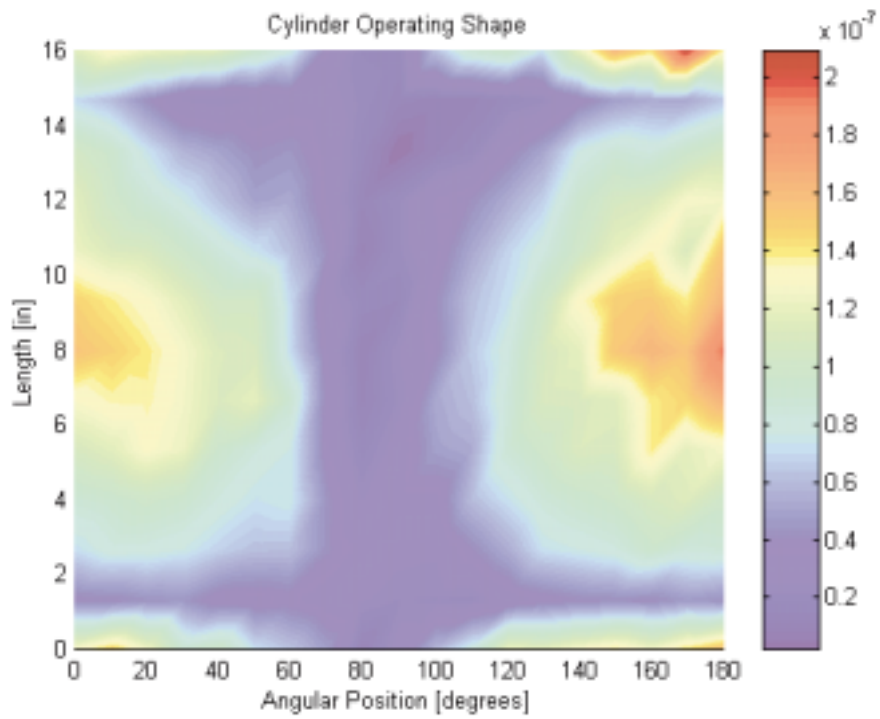


Figure C.10 Cylinder operating shape at 2208 Hz, (displacement magnitude, m).

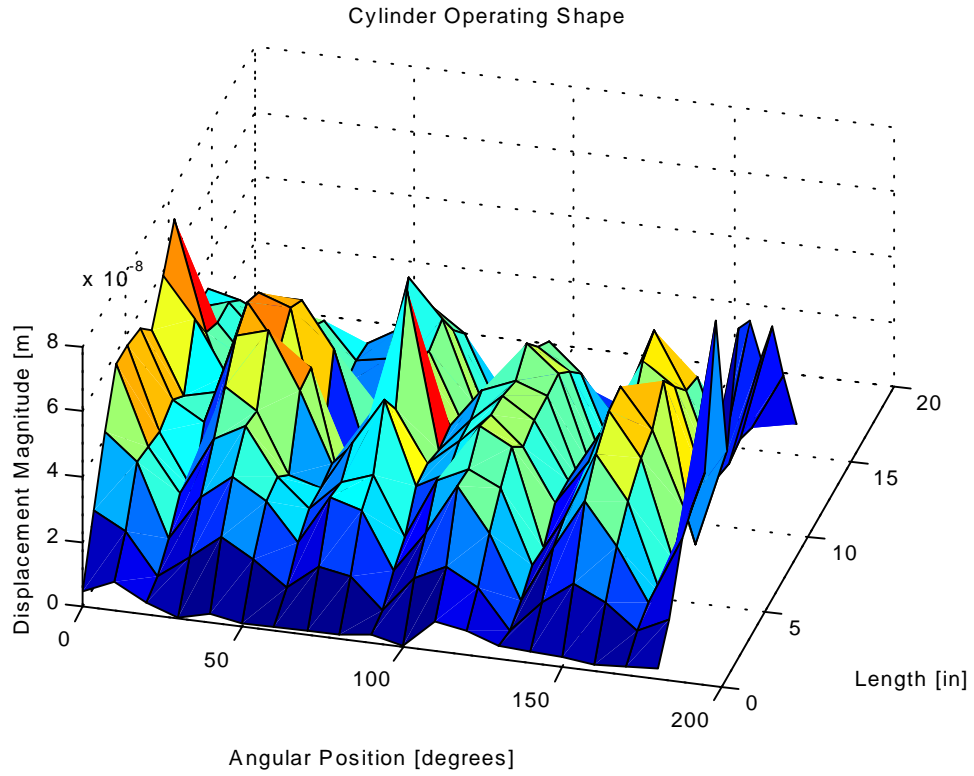


Figure C.11 Cylinder operating shape at 2388 Hz (5,1).

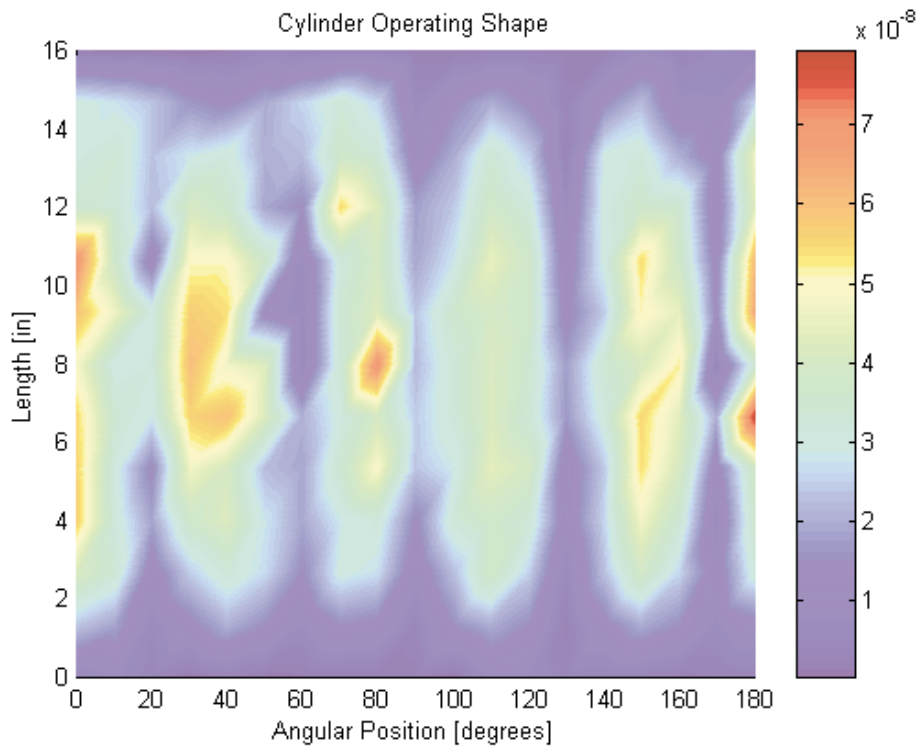


Figure C.12 Cylinder operating shape at 2388 Hz, (displacement magnitude, m).