

APPENDIX H MISCELLANEOUS PHASE PLOTS FOR THE CYLINDER

The phase information associated with Fig. 2.7 is shown in Fig. H.1 and Fig. H.2 for hammer strike locations at $x=1/4$ and $x=1/2$.

The phase information associated with Figs. 4.23 – 4.25 is shown in Figs. H.3 – H.5 for the acoustic response within the cylinder at various spatial points.

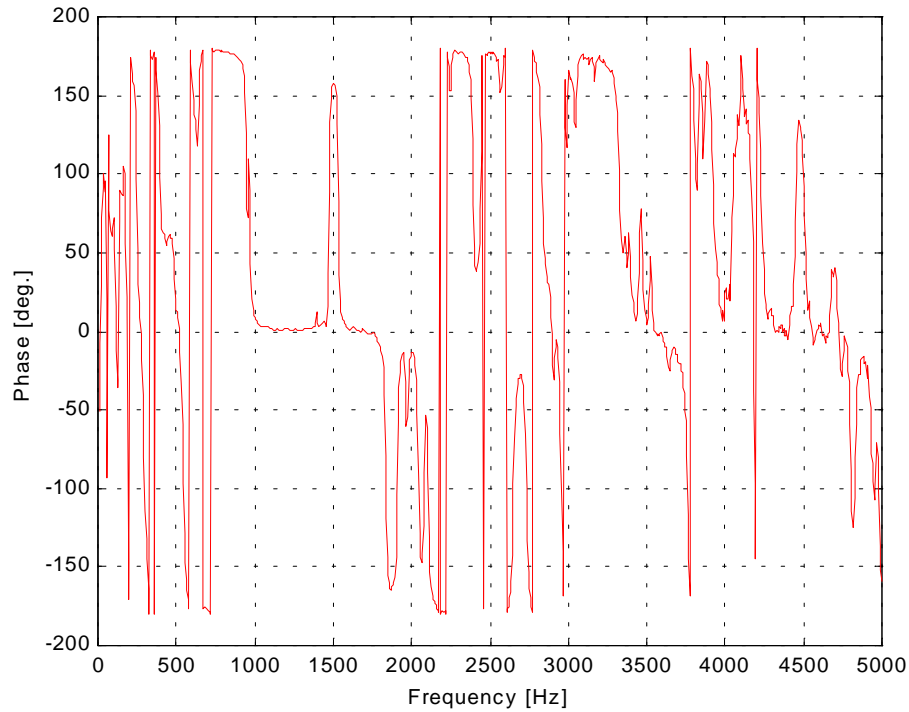


Figure H.1 Phase of displacement wrt. force for hammer strike at $x = 4''$, $\theta = 0^\circ$.

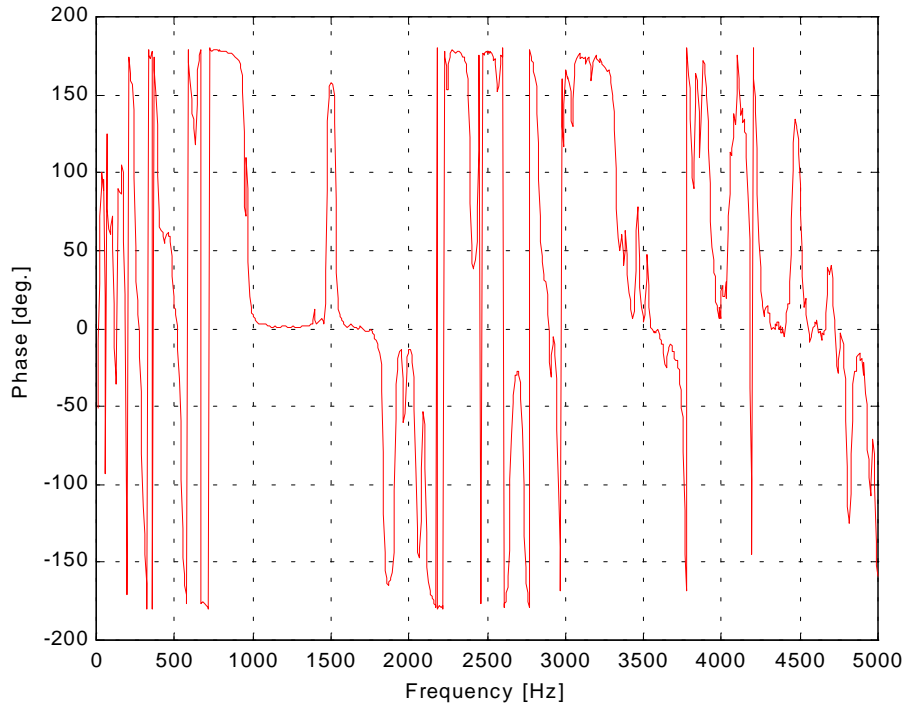


Figure H.2 Phase of displacement wrt. force for hammer strike at $x = 8''$, $\theta = 0^\circ$.

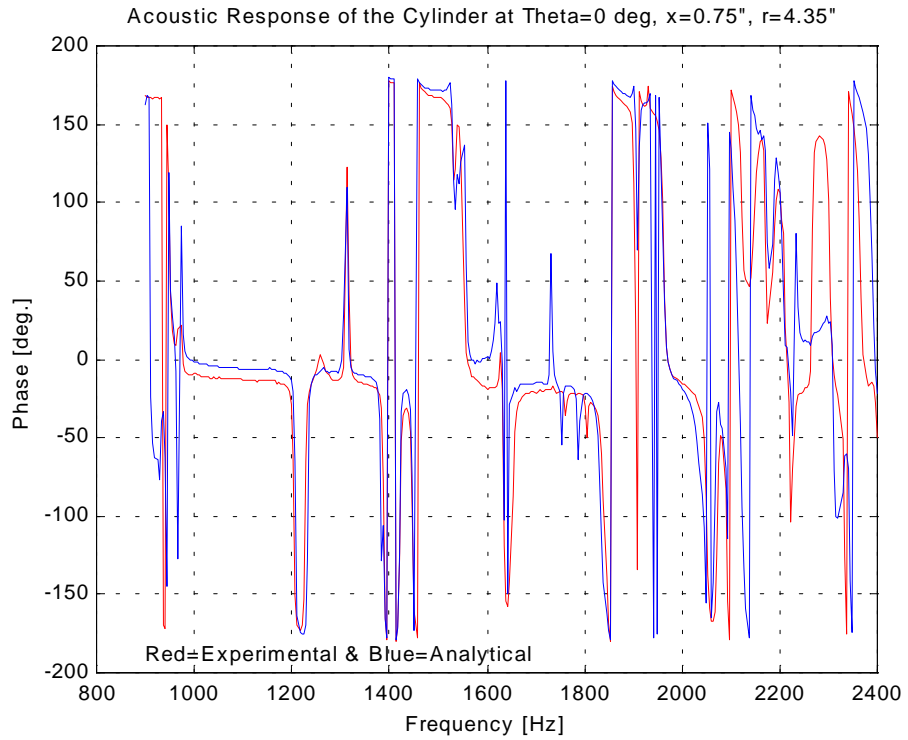


Figure H.3 Comparison of the acoustic simulation with experiment $\{ x_a = 19.05 \text{ mm (0.75 in.)} \}$.

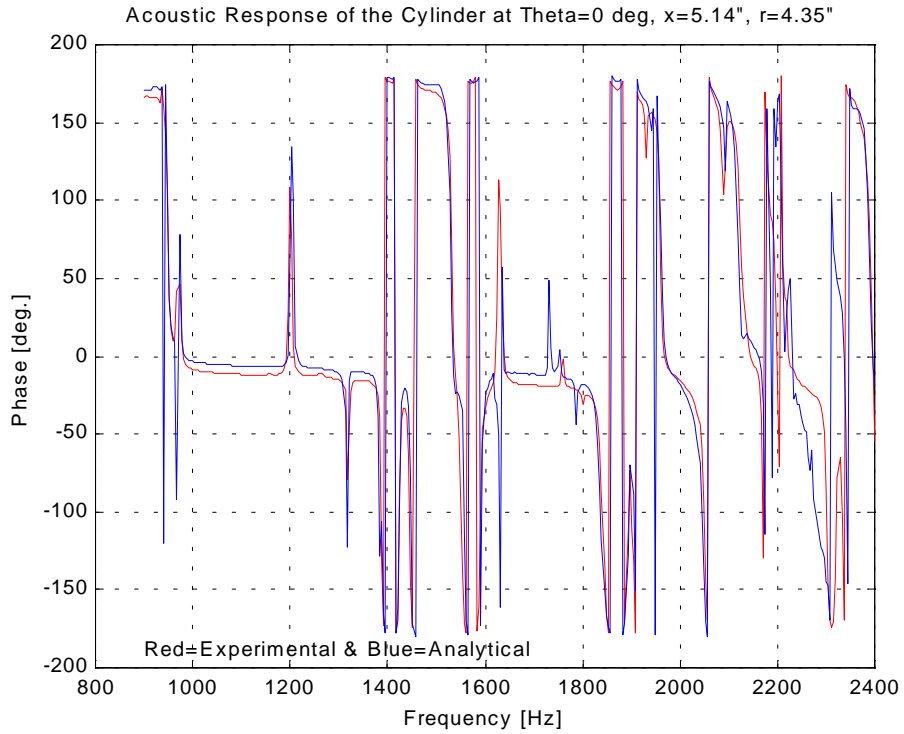


Figure H.4 Comparison of the acoustic simulation with experiment { $x_a = 130.56$ mm (5.14 in.) }.

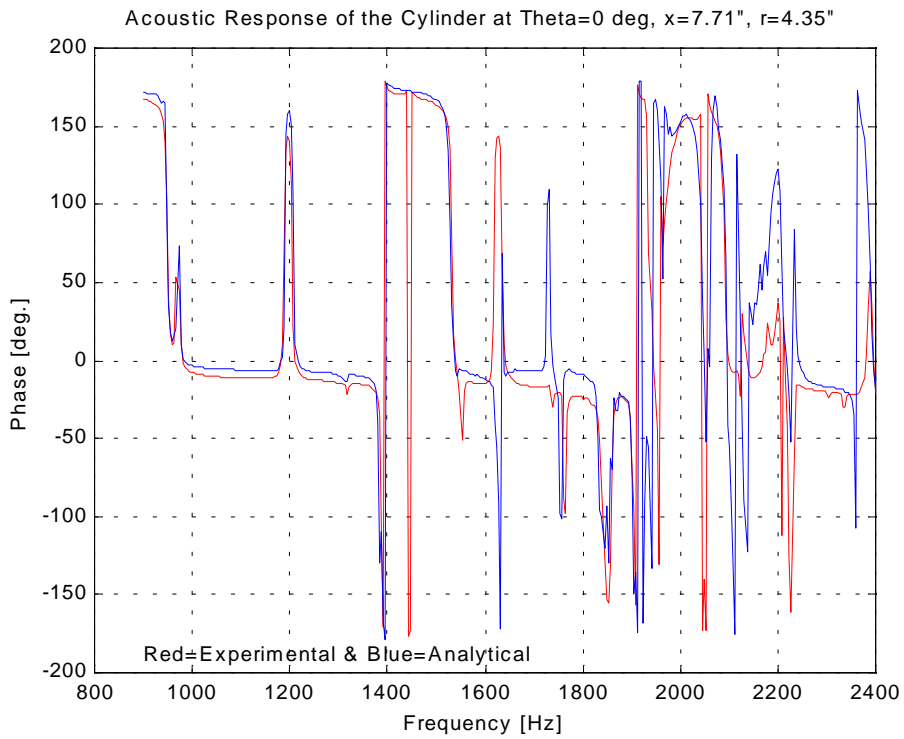


Figure H.5 Comparison of the acoustic simulation with experiment { $x_a = 195.83$ mm (7.71 in.) }.