

0.39 R_f →

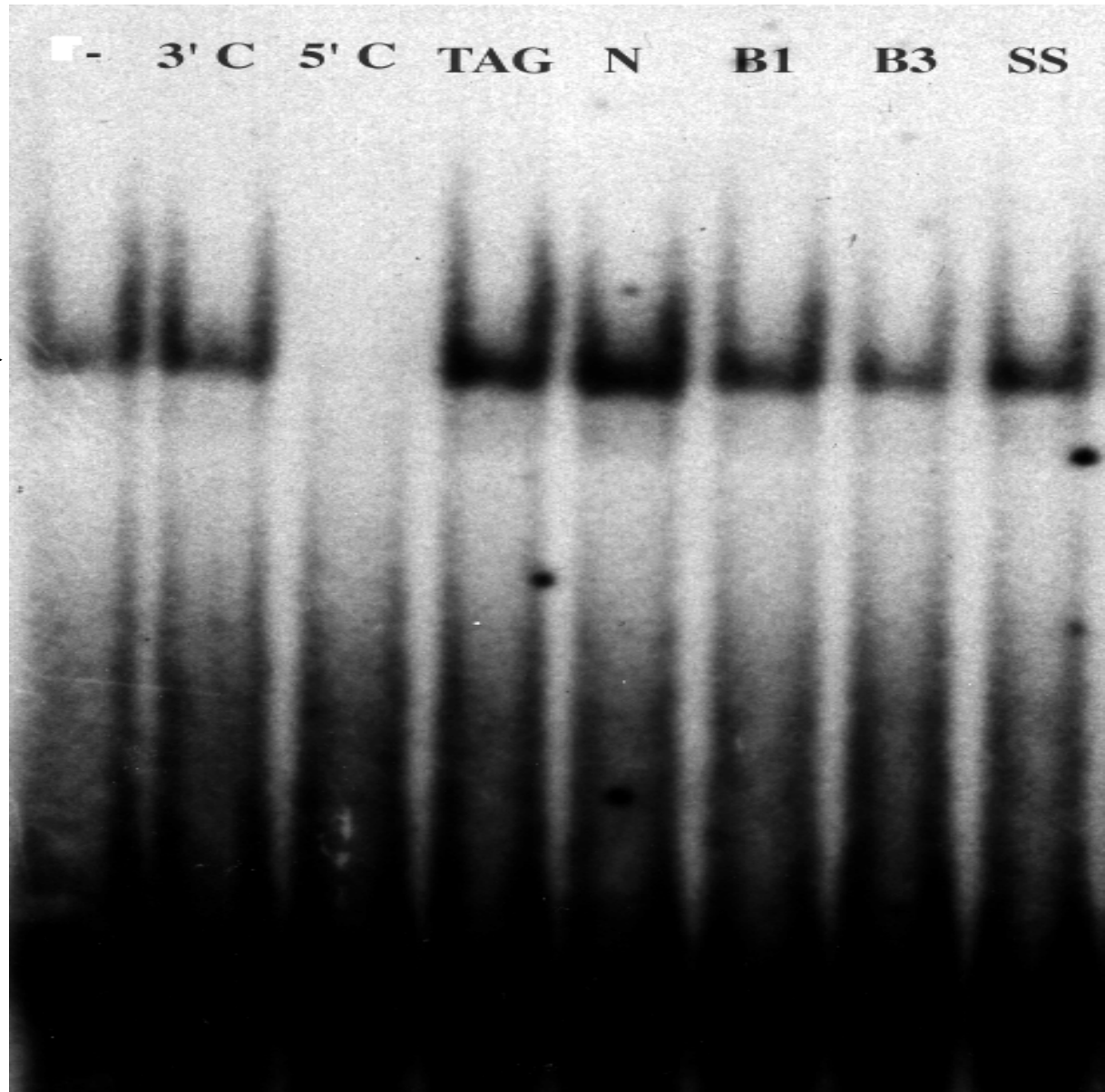


Figure 10. Competition assays demonstrating the specificity of TF2 for the 5'C probe.

This gel shows competition assays between the 5'C probe and the other *gp2*

promoter fragments using DEAE fraction 7. Labeled 5'C probe was used in all the lanes.

In addition, all the lanes (except the lane marked -) contained a second fragment that was unlabeled. The unlabeled fragment was in 50-fold excess of the labeled probe. The unlabeled fragment used is indicated at the top of each lane. Only the unlabeled 5'C probe competed for binding, thus accounting for the absence of a TF2 band in that lane and indicating the specificity of TF2 for the 5'C probe.