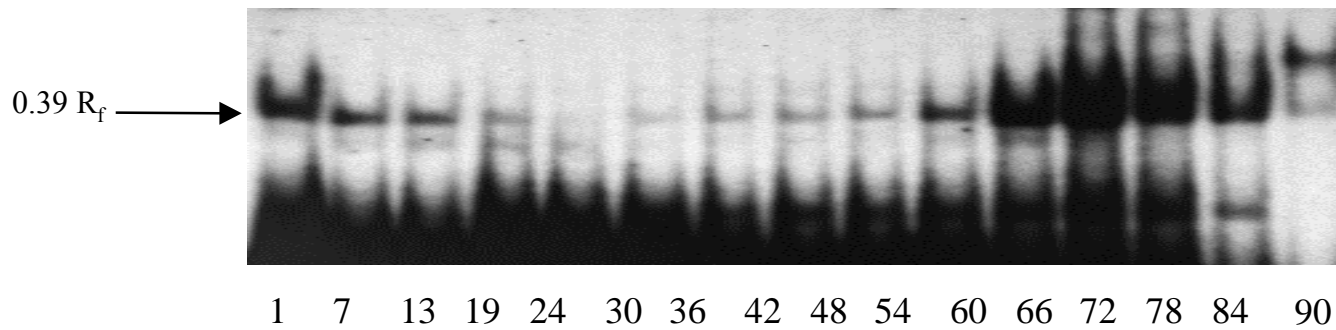
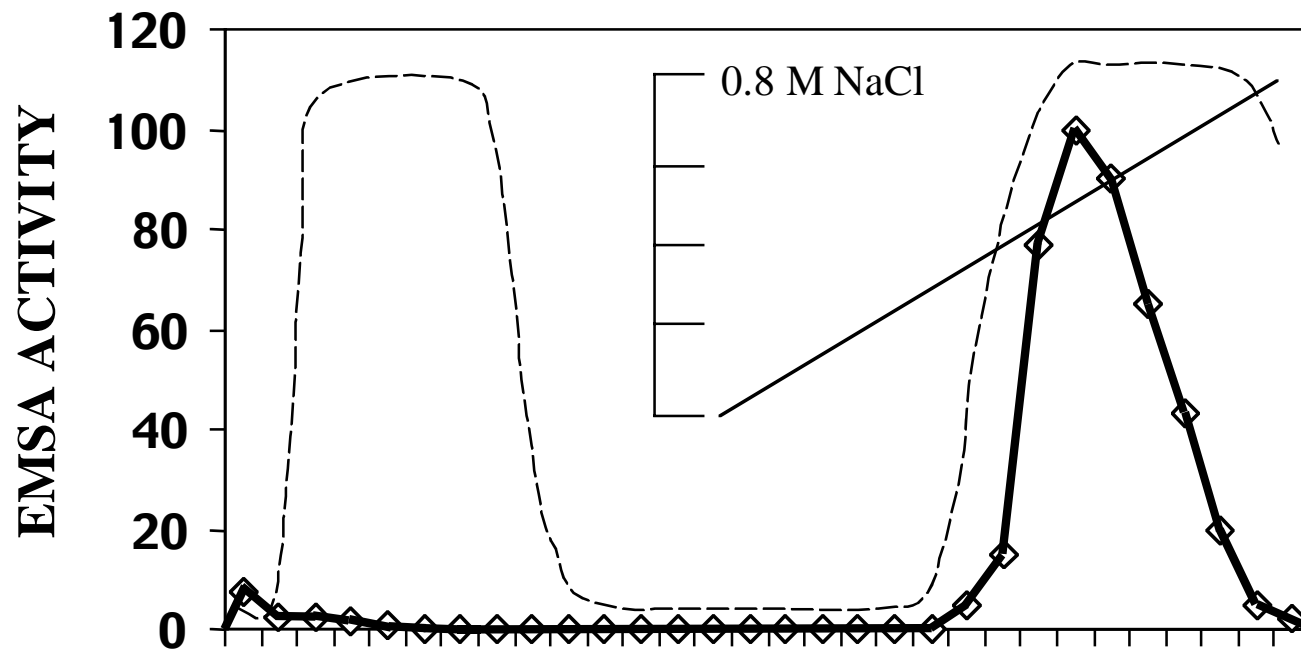


55



FRACTION NUMBER

**Figure 11. Ion exchange chromatography of TF2.**

This figure depicts the results obtained from the analysis of fractions from ion-exchange chromatography. Cell-free extracts of *Dictyostelium* were separated using a DEAE sephacel column. Bound proteins were eluted using a linear NaCl gradient from 0 to 0.8 M over 2 h. The dotted line represents elution of total protein. The DEAE fractions were subjected to EMSA with labeled 5'C probe (shown in the box below the elution profile). The thick line in the graph shows EMSA activity. TF2 can be seen migrating at 0.39 R<sub>f</sub> in the EMSA gel. Fraction 1 is the sample that went on the column. Fractions 7 and 13 are flow-through fractions. The column was overloaded and therefore the 0.39 R<sub>f</sub> band is seen in the flow-throughs. The heavier band seen in fraction 90 is DdRPA (TF1).