

Hind III *Eco* RI *Cla* I

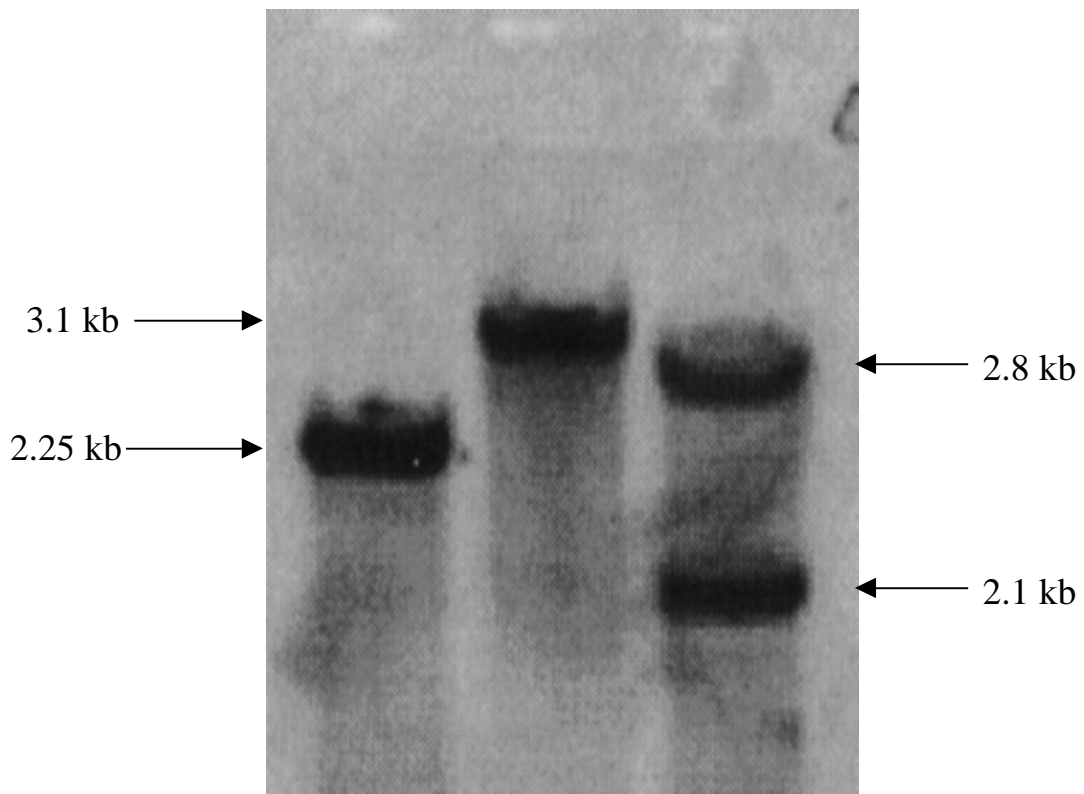


Figure 6 (A and B). Schematic Representation of Mutant Promoter constructs

This figure summarizes the mutations being analyzed. The full-length *gp2* promoter is shown cloned in frame with the luciferase reporter gene (LUC). The transcription start site is indicated with an arrow. Wild type TAG-boxes are shown as circle-filled rectangles and C-boxes as lined rectangles. Mutation of an entire TAG- or C-box is represented by an absence of that rectangle. Point mutations within TAG- and C-boxes as well as mutations outside these regions are indicated with stars.