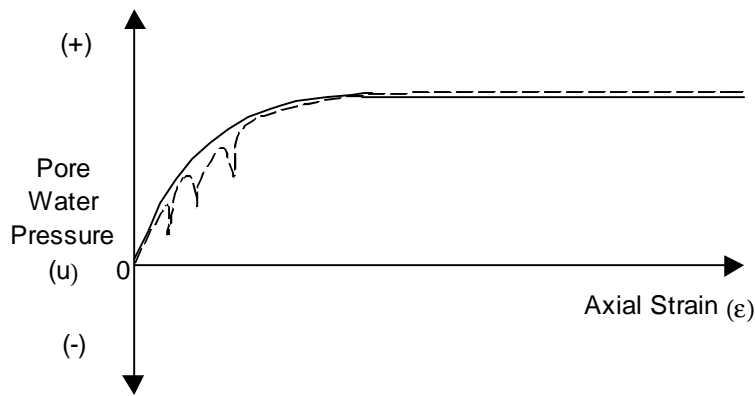
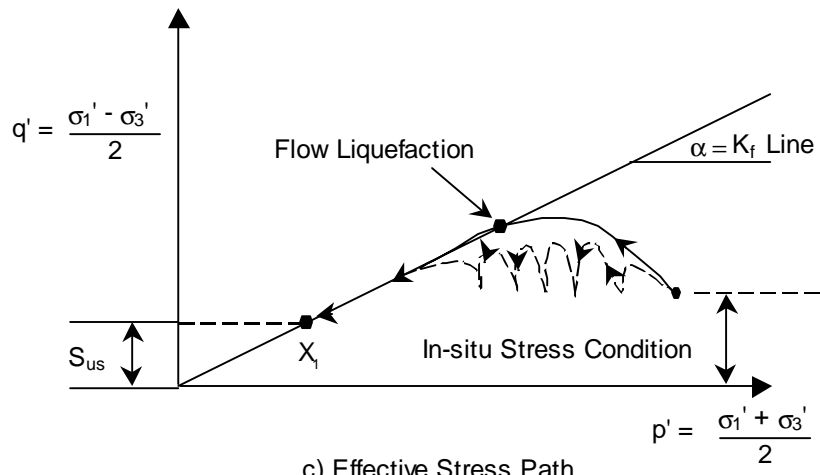


a) Stress-Strain Behavior



b) Pore Water Pressure Development



c) Effective Stress Path

Figure 2.1 Soil Response of Contractive Soil When Subjected to Undrained Monotonic and Cyclic Loading. (Modified from Rauch 1997)

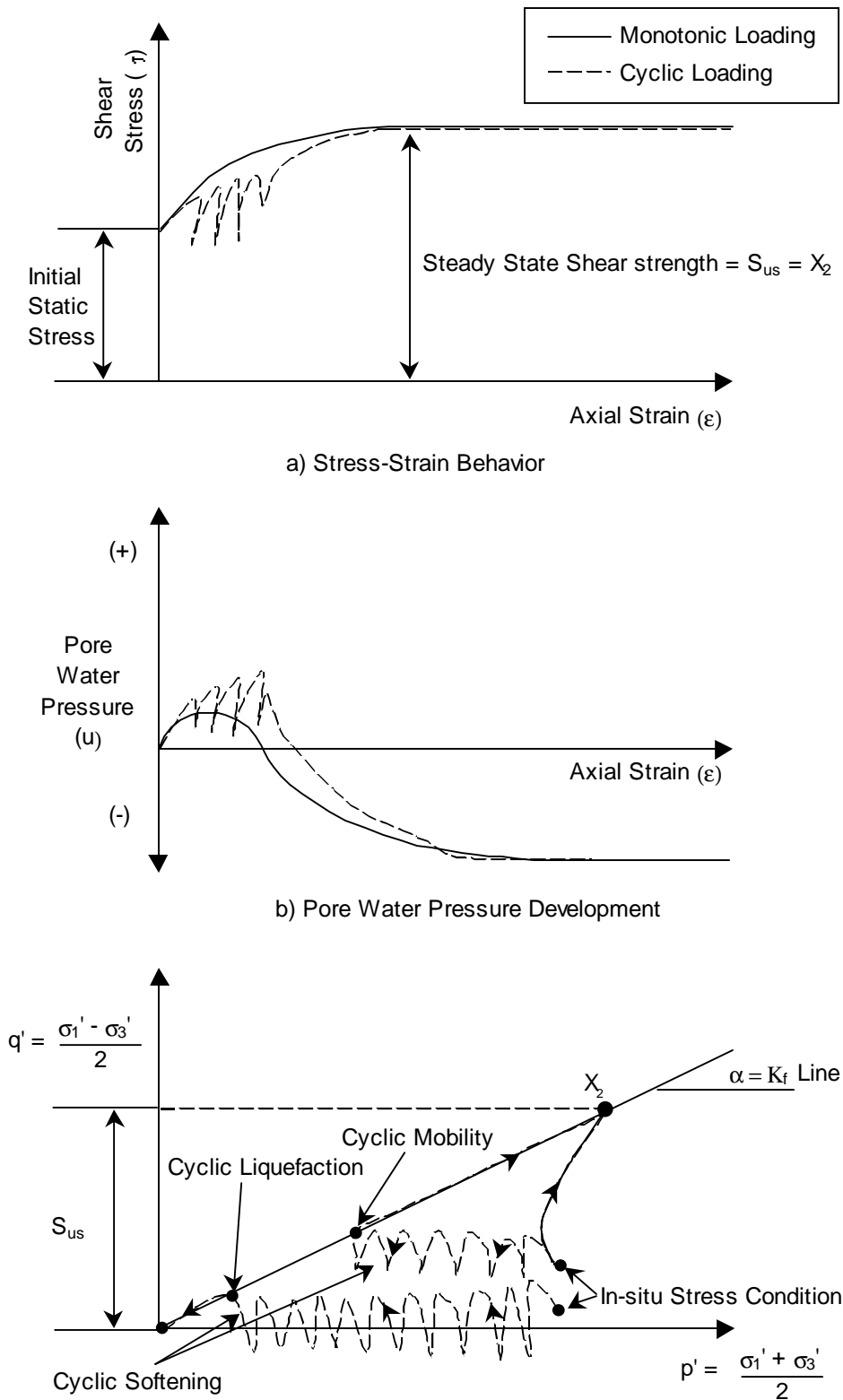


Figure 2.2 Soil Response of Dilative Soil When Subjected to Undrained Monotonic and Cyclic Loading. (Modified from Rauch 1997)

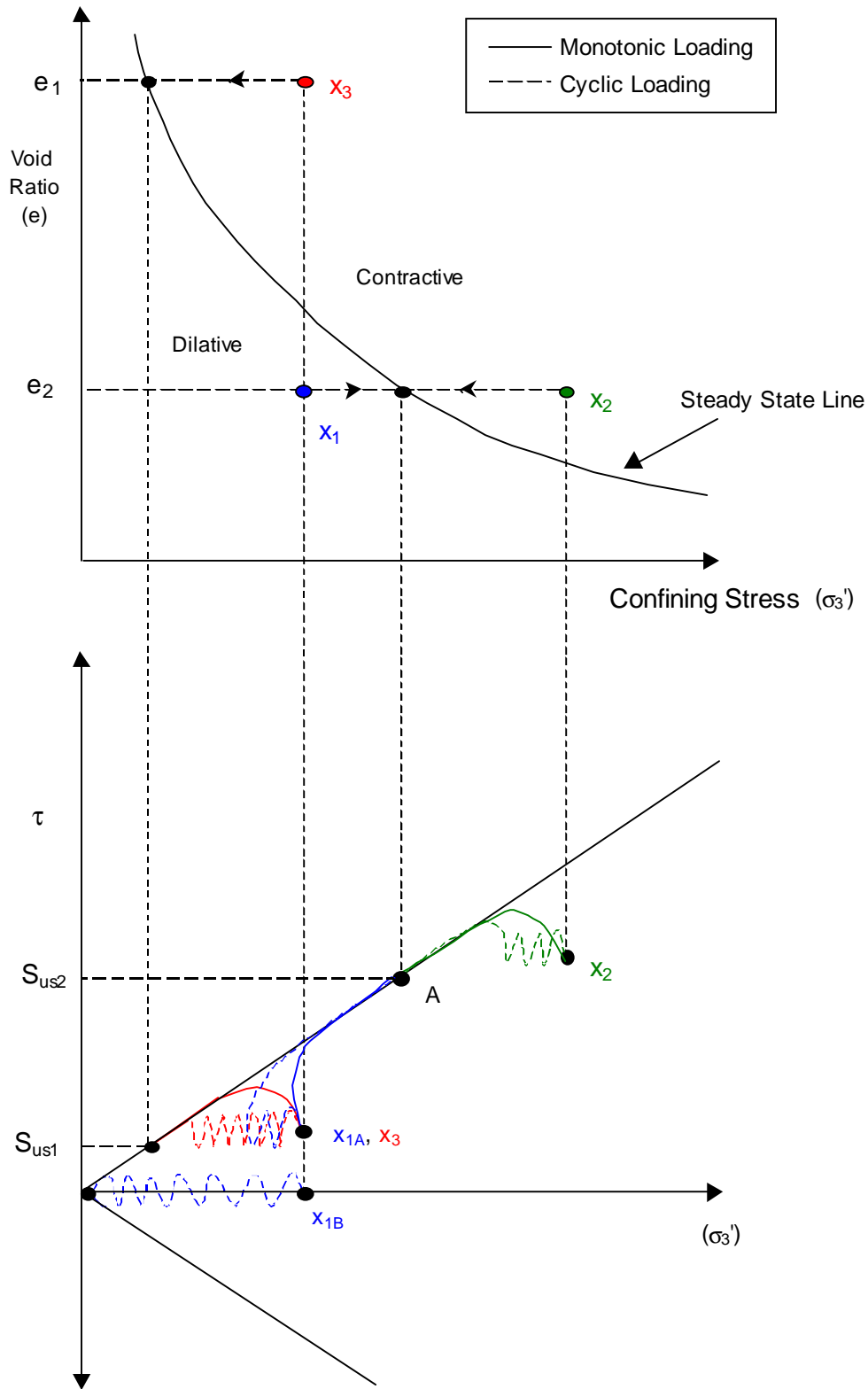


Figure 2.3 Relationship of Soil Behavior to Steady-State Line During Monotonic and Cyclic Loading (Modified from Rauch 1997)

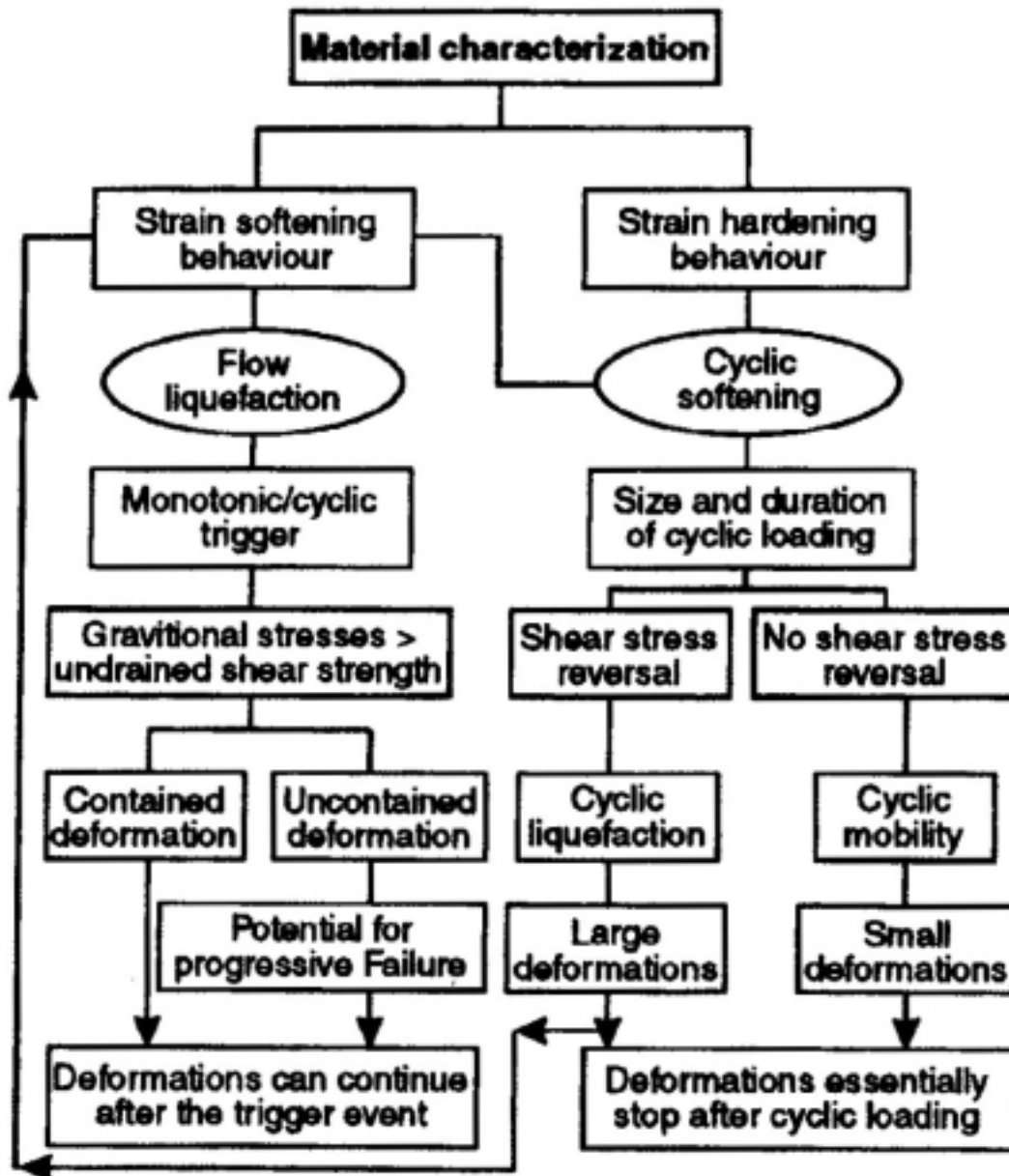
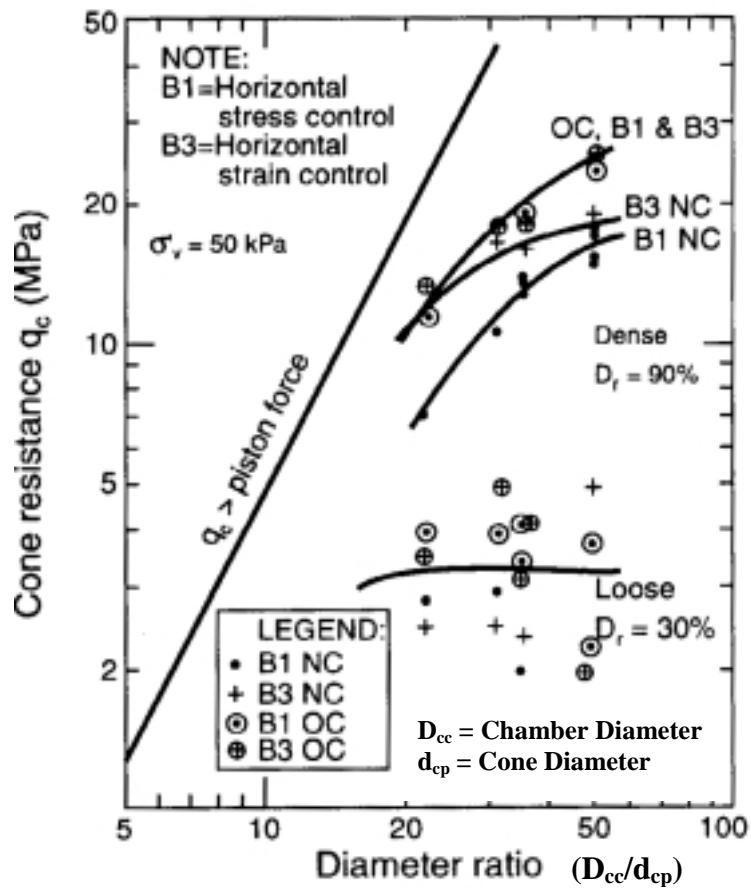
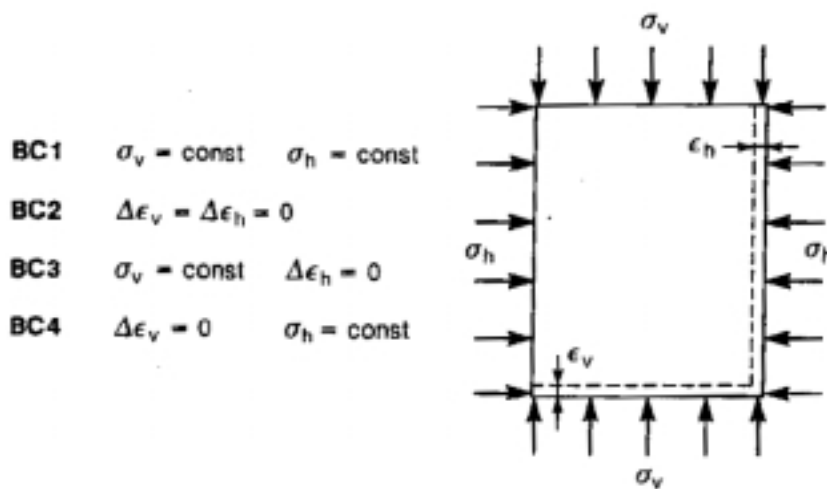


Figure 2.4 Flow Chart for Evaluation of Liquefaction (Modified from Robertson 1994)



a) (After Parkin and Lunne 1982)



b) (After Ghionna and Jamiolkowski 1991)

Figure 2.5 Effects of Boundary Conditions and Chamber Size on the Penetration Resistance Measurement

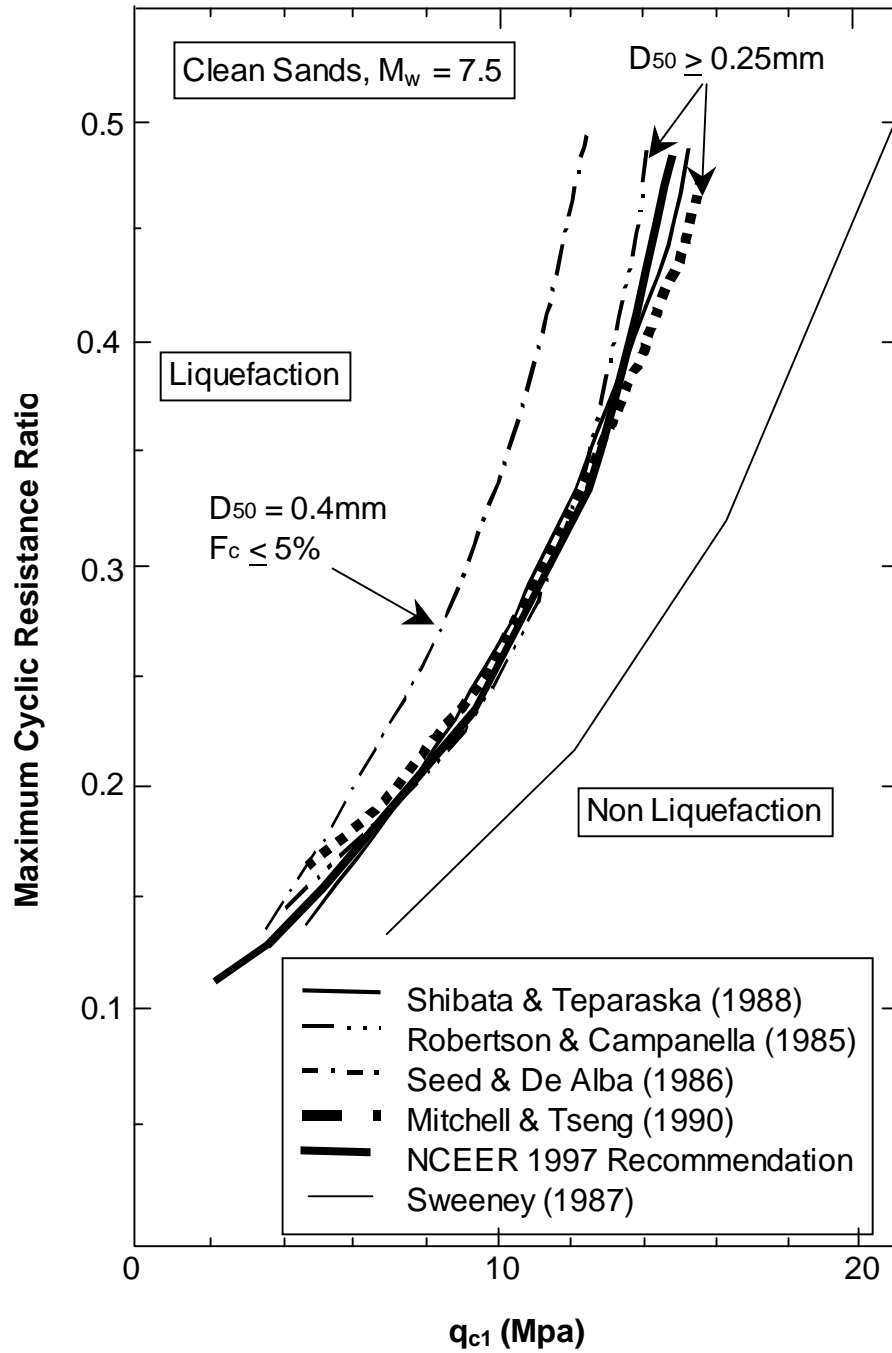


Figure 2.6 Comparison of Various Liquefaction Delineation Approaches (Adapted from Mitchell and Brandon 1998)