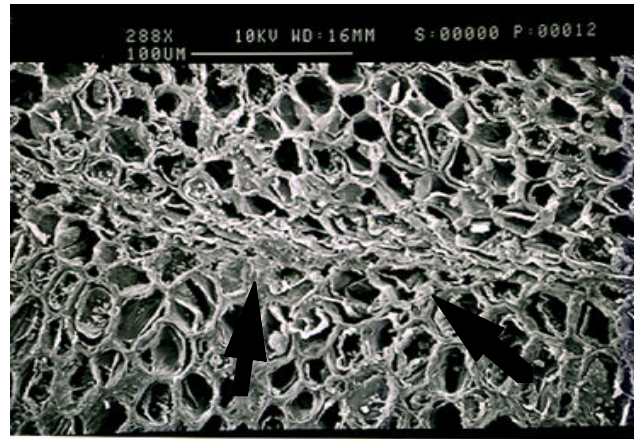
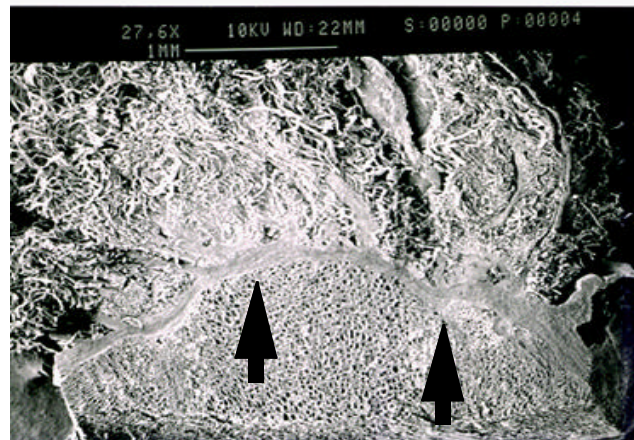


**A****B**

**Fig. 3.7. A) Scanning electron microscopy micrograph of a 'Riesling' bud from Somerset Vineyard showing compressed layers of cells (288X) at the base of the primary axis observed at 76 days after budbreak (30 June, 1994). B) Another scanning electron microscopy micrograph of 'Riesling' bud from Somerset Vineyard sampled at 96 days after budbreak on 25 July, 1994; shows a zone of compression (27.6X) at the base of the primary axis and extending to the base of the secondary buds as well.**