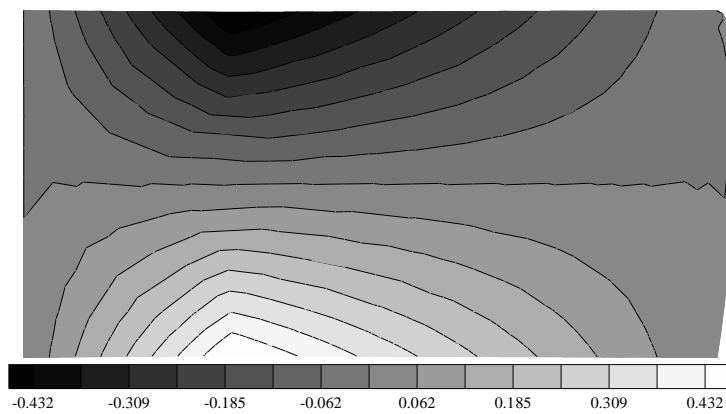
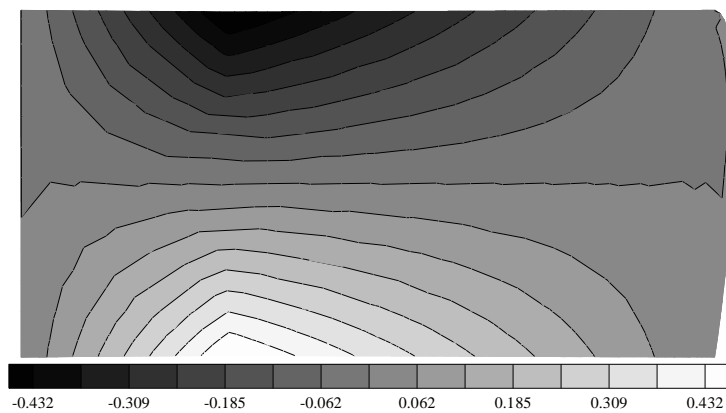


(a) Unstructured surface grid with 3,867 nodes and 18,856 cells.



(b) Finite-difference surface grid sensitivities  $x/ b_1$ .



(c) ADIFOR generated surface grid sensitivities  $x/ b_1$ .

Figure 6.11: Unstructured mesh and grid sensitivities on the rectangular wing upper surface.