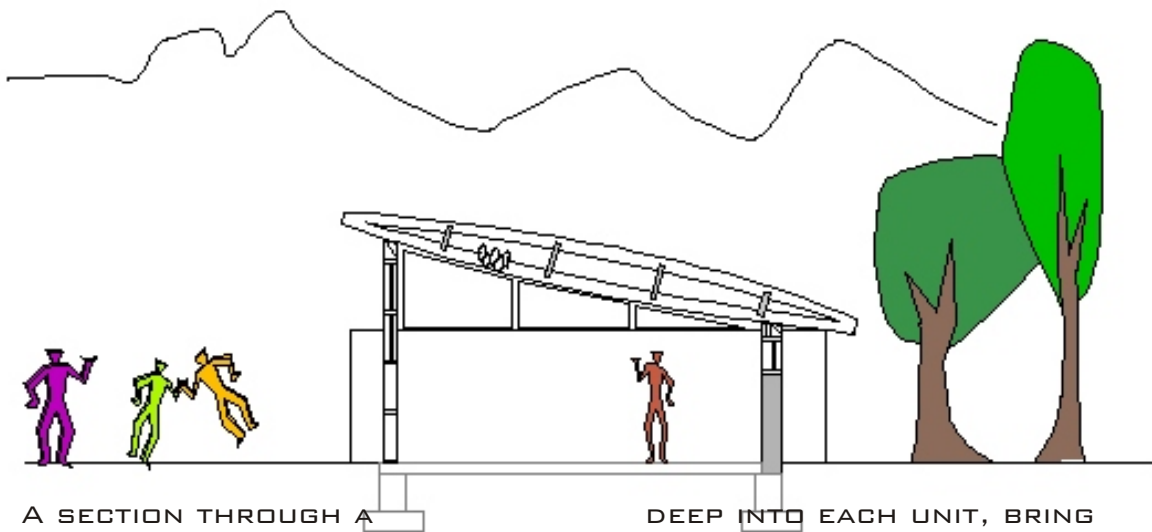
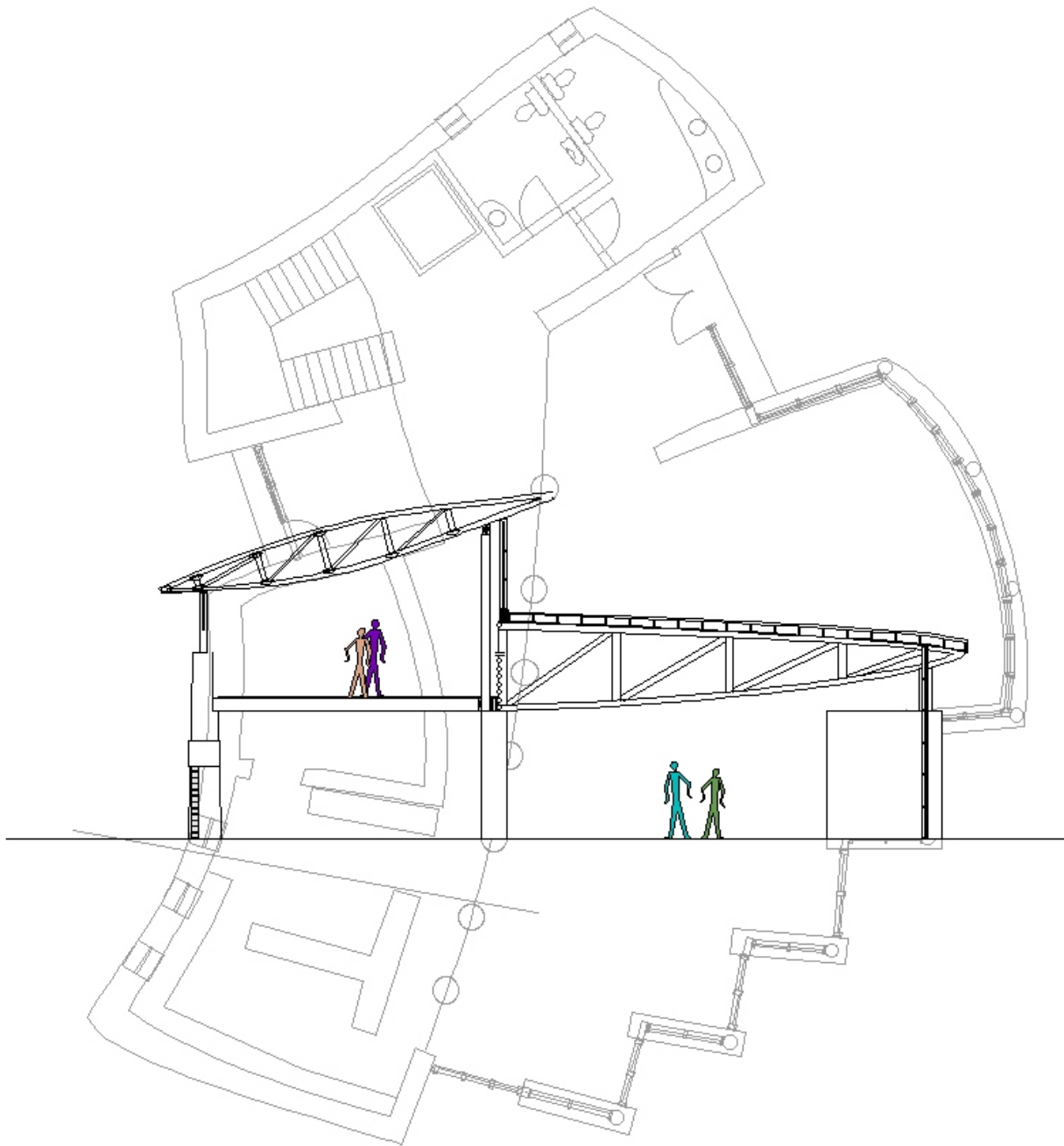


SECTION THROUGH MAIN BUILDING



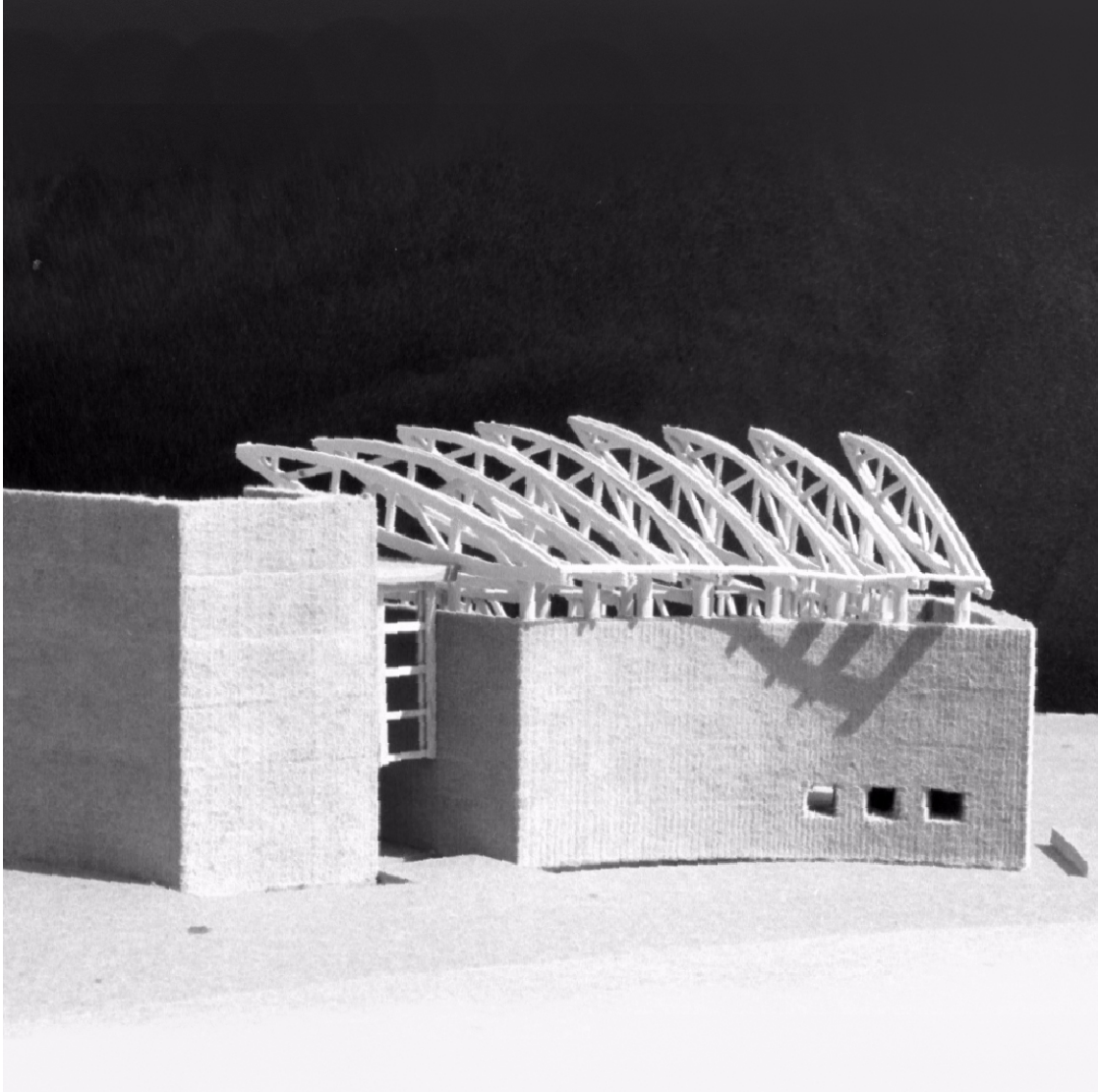
A SECTION THROUGH A SLEEPING UNIT
THE SMALL SIMPLE UNITS ARE INTEGRAL TO THE ENVIRONMENT AROUND THEM, ALLOWING SUNLIGHT TO SURGE

DEEP INTO EACH UNIT, BRING THE OUTSIDE IN AND ALLOWING THE OUTER AREAS TO BECOME PART OF THE INDIVIDUAL UNIT.

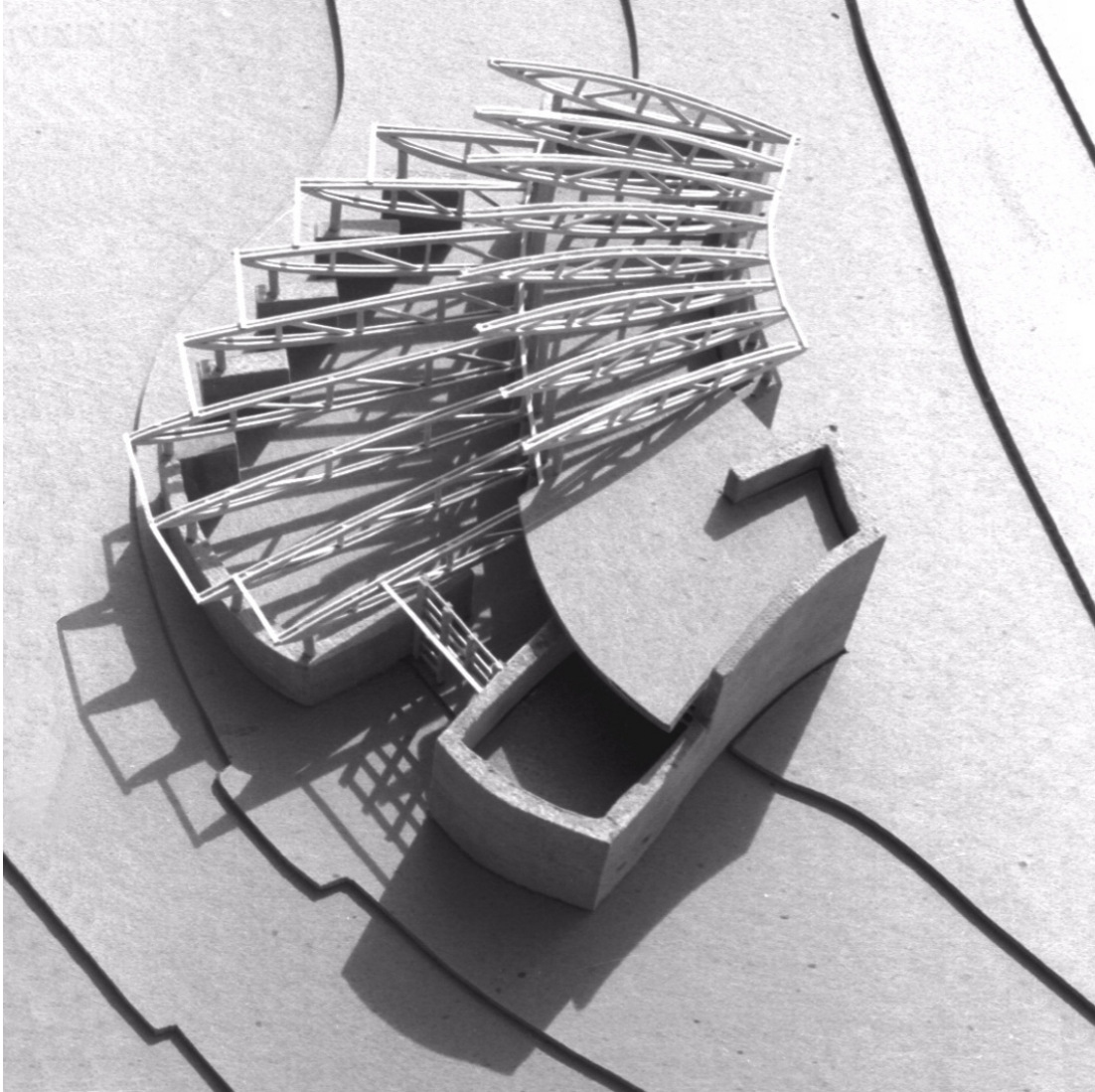


THE MEETING-DINING HALL. THE DESIGN INCORPORATES THE BASIC THEMES OF SOLID MASONRY SUPPORTING WALLS WITH LIGHT WEIGHT SITE BUILT TRUSSES. A CLERESTORY BRINGS NATURAL LIGHT DEEP WITHIN THE STRUCTURE AND THE RAISED ROOF CREATES ROOM FOR OFFICES ABOVE THE

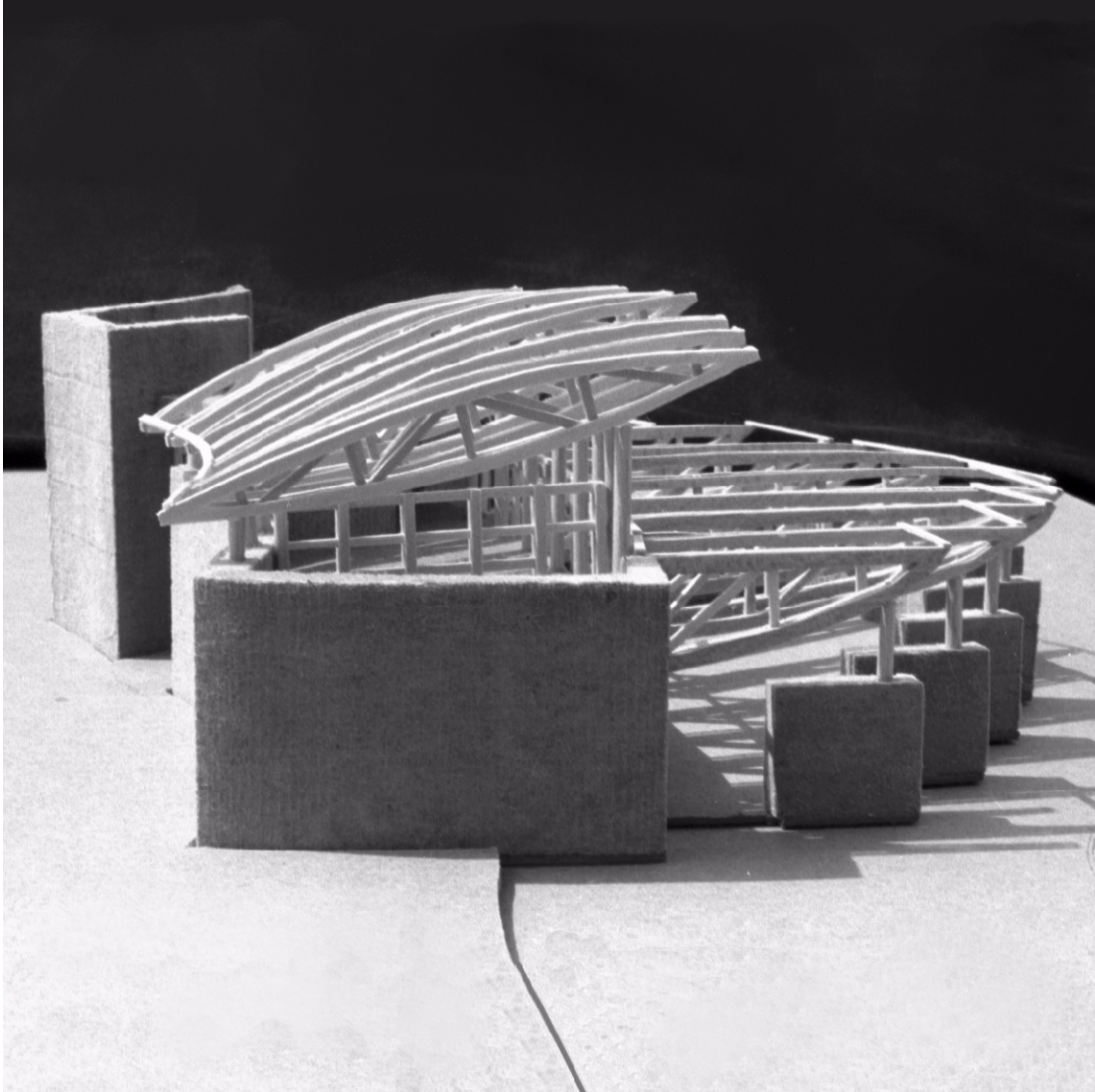
MAIN KITCHEN AND A ROOF TERRACE WITH VIEWS TO THE MAIN ENTRANCE. THE BUILDING OPENS TO THE SOUTH WITH DOORS THAT OPEN INTO THE MASONRY SUPPORTS CREATING A SPACE THAT DURING NICE WEATHER CAN OPEN TO AN OUTDOOR PATIO.



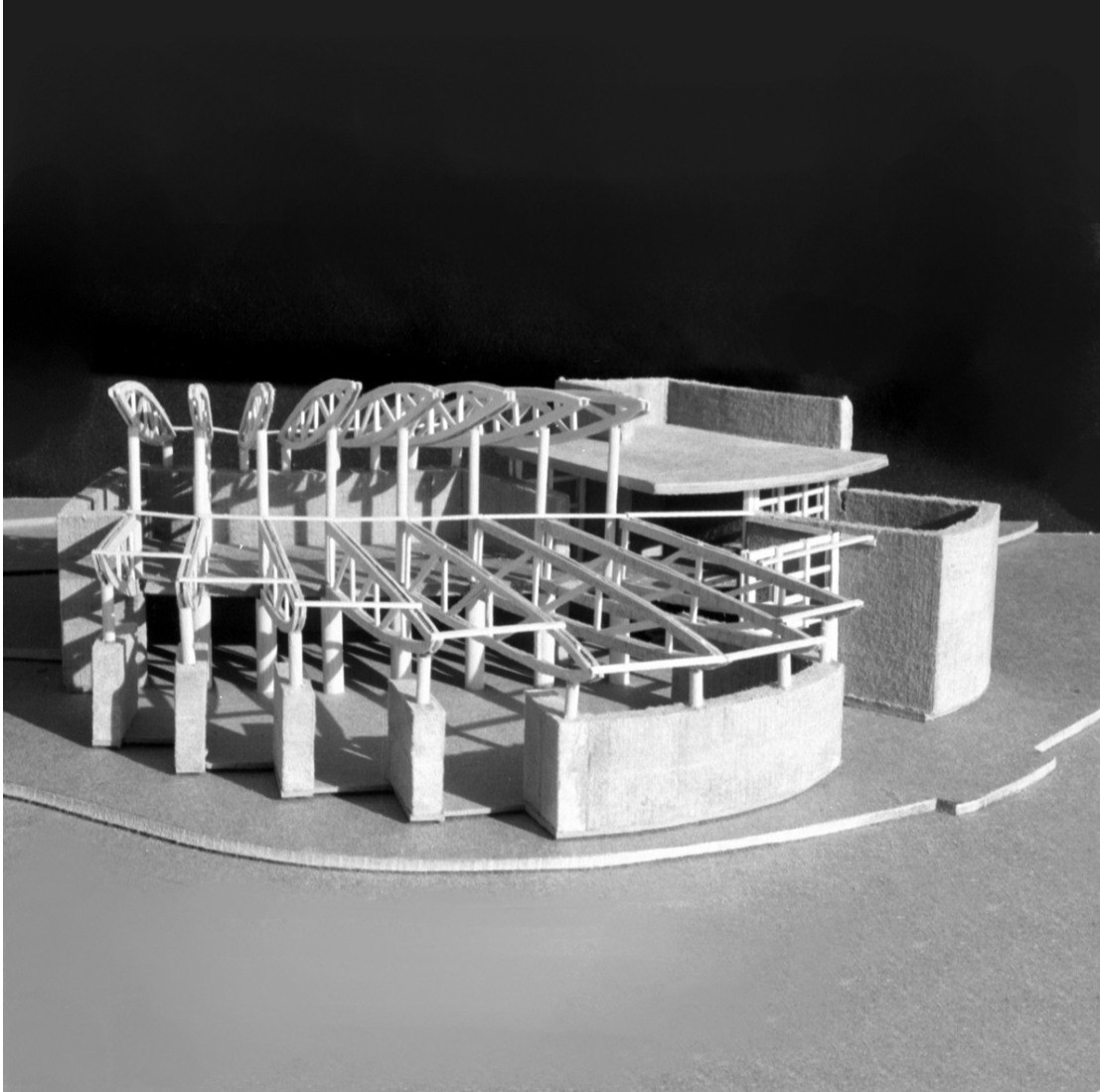
BACK VIEW OF FINAL
MODEL SHOWING SMALL
OPENINGS IN HEAVY MASS
WALL AND LIGHT WOOD
TRUSSES FOR THE ROOF.



TOP VIEW OF FINAL MODEL
PLAN OPENS FROM BACK
TO FRONT. MASS AREA AT
THE BOTTOM OF THIS
PHOTO SHOWS THE
MECHANICAL ZONE THAT
IS SEPARATED FROM THE
MAIN OPEN AREA OF THE
BUILDING BY THE
ENTRANCE SECTION.



WEST VIEW OF THE MODEL
HIGHLIGHTING HOW THE
THICK MASONRY WRAPS
AROUND THE LIGHTER
FRAME CORE AND RISES
UP TO CATCH THE UPPER
ROOF TRUSSES.



SOUTH VIEW OF MODEL
SHOWING HOW THE MAIN
MEETING AREA FANS OUT
TO BRING IN THE OUTSIDE
AND ALLOW ACCESS TO
AN OUTDOOR PATIO.

Interpretations and conclusions

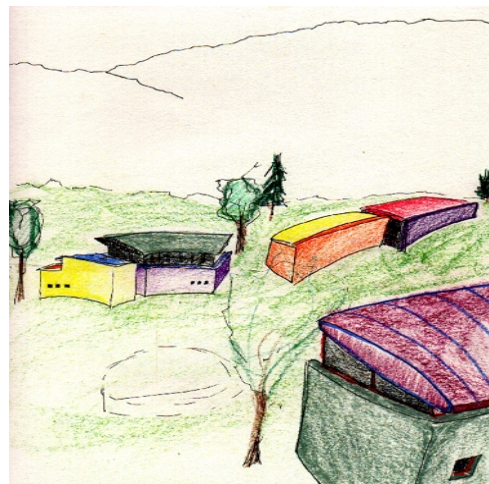
This thesis does not end with one building and a new static plan for the Institute.

The basic design that evolved during my work on this thesis is not a finished product but an example of how to proceed. Often architectural works are seen as finished when complete but when working with a larger

palette and an open ended timeframe it is that time that must be thought about, to allow for change and evolution of use.

The plan is not developed as a rigid map that must be adhered to, but a system of guidelines to lead future building and to allow interaction of the community as it grows and changes.

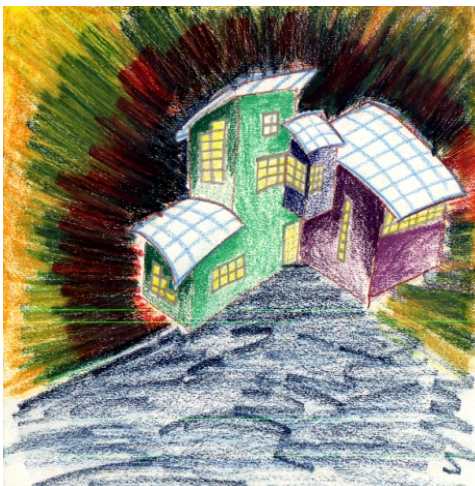
Hopefully, over time a coherent development will be built that is not the implementation of a plan



drawn now, but more of a living organism that will change and develop on its own, as influences change and fill in the joints and spaces in the plan, based on the structure applied now.

By developing a new approach to channel continuing and future growth a system develops to help bring about continuity to the process. It is the step-by-step approach that is the cornerstone of this system, to understand that a development can continue without the need for large major buildings. But can develop in such a way as to allow for steady consistent growth and eventually get to a more complete complex system then could ever be imagined at the start. It comes back to the idea of bringing a devastated part of earth back to life one tree at a time. It is only a matter of planting the right trees.

Building is not a separate activity from the whole of the work of the center. Building a building is in itself is an important event. When seen as a part of the larger goals of the community of Gesundheit, the process it self becomes a part of the therapy. Working with one's hands, is critical for the soul. To allow the actual work on the building to be part of the therapy can only help the building to better reflect the health of the center. And continuing on, it is critical that the health of the planet is part of the equation. How can we heal the individual and poison the earth? A good building for Gesundheit is one that feeds the soul not only of the individual but the community and the earth not only when finished but during construction.



Bibliography

- Alexander, Christopher, Silverstein, Murray, Angel, Shlomo, Ishikawa, Sara, Denny Abrams. *The Oregon Experiment*. Oxford: Oxford University Press. 1975.
- Back, Frederic (Director), Giono, Jean (Story by), Tison, Hubert (Producer), Plummer, Christopher (Narration), Norman, Roger (Music). (1987) *The Man Who Planted Trees* (Videotape). Santa Monica, CA: Direct Cinema Limited.
- Easterling, Keller. *American Town Plans*. New York: Princeton Architectural Press, 1993.
- Gesundheit! Institute (n.d.)
<http://www.patchadams.org/>
- Gesundheit! Pictures (n.d.)
[Http://www.patchadams.org/picturepages/dacha3.htm](http://www.patchadams.org/picturepages/dacha3.htm)
<http://www.patchadams.org/picturepages/land2.htm>
- Giono, Jean (1995) *The Man Who Planted Trees*. (Roberts, Jean, Translation. Back, Frederic, Illustration). Ontario, Stoddart. (Original work published 1983).
- Holl, Steven. *Edge of a City*. New York: Princeton Architectural Press, 1991.
- McCamant, Kathryn & Durrett, Charles. *Cohousing*. Berkeley, CA: Ten Speed Press, 1994.
- Nash, Hugh, Editor. *Progress as if Survival Mattered*. San Francisco: Friends of the Earth, 1977.
- Taylor, John S. *Commonsense Architecture*. New York: W W Norton & Company, 1983.
- The 'Wellness' Show (n.d.)
[Http://www.globalideasbank.org/BOV/BV-231.HTML](http://www.globalideasbank.org/BOV/BV-231.HTML)