

The view from the Potomac River to the Georgetown waterfront is uninviting and cold.



60. The view of the Potomac River is almost always obstructed by the Whitehurst Freeway.

61. Below the Whitehurst Freeway the street is dark and the stores and businesses have a different personality from those on M street.

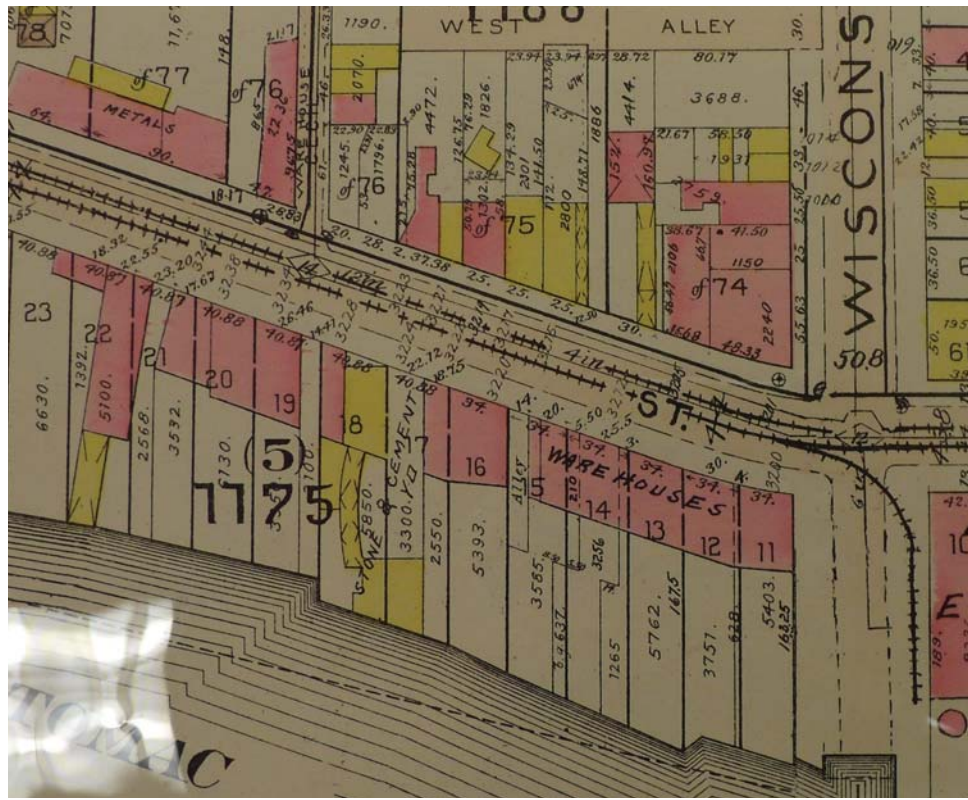


60.

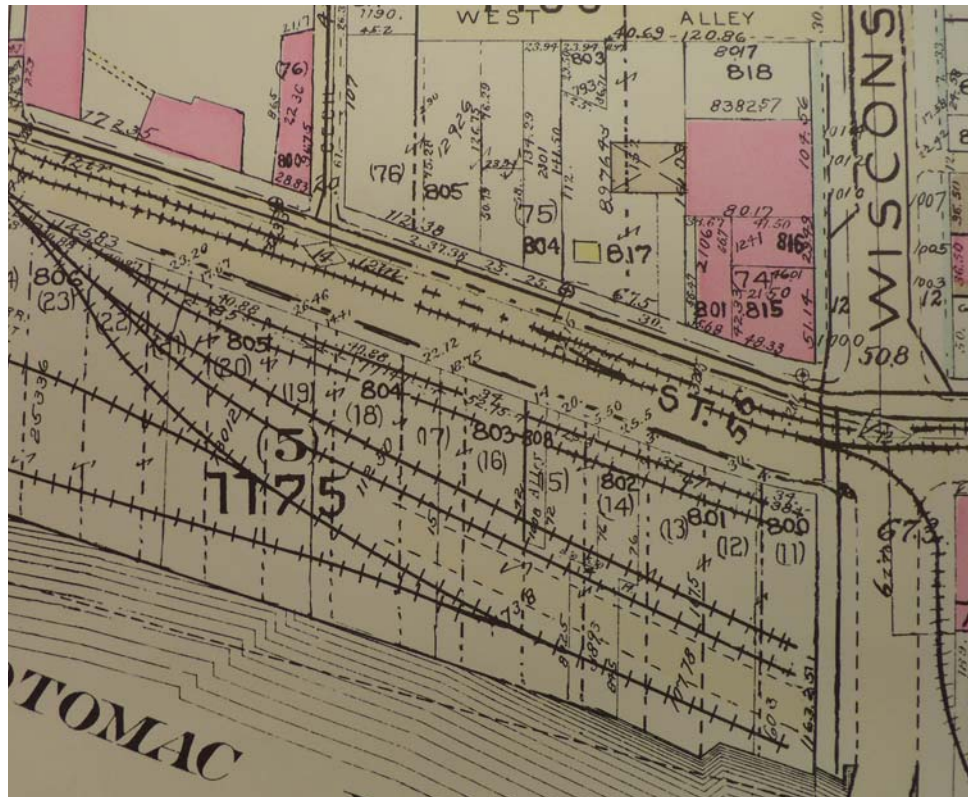


61.

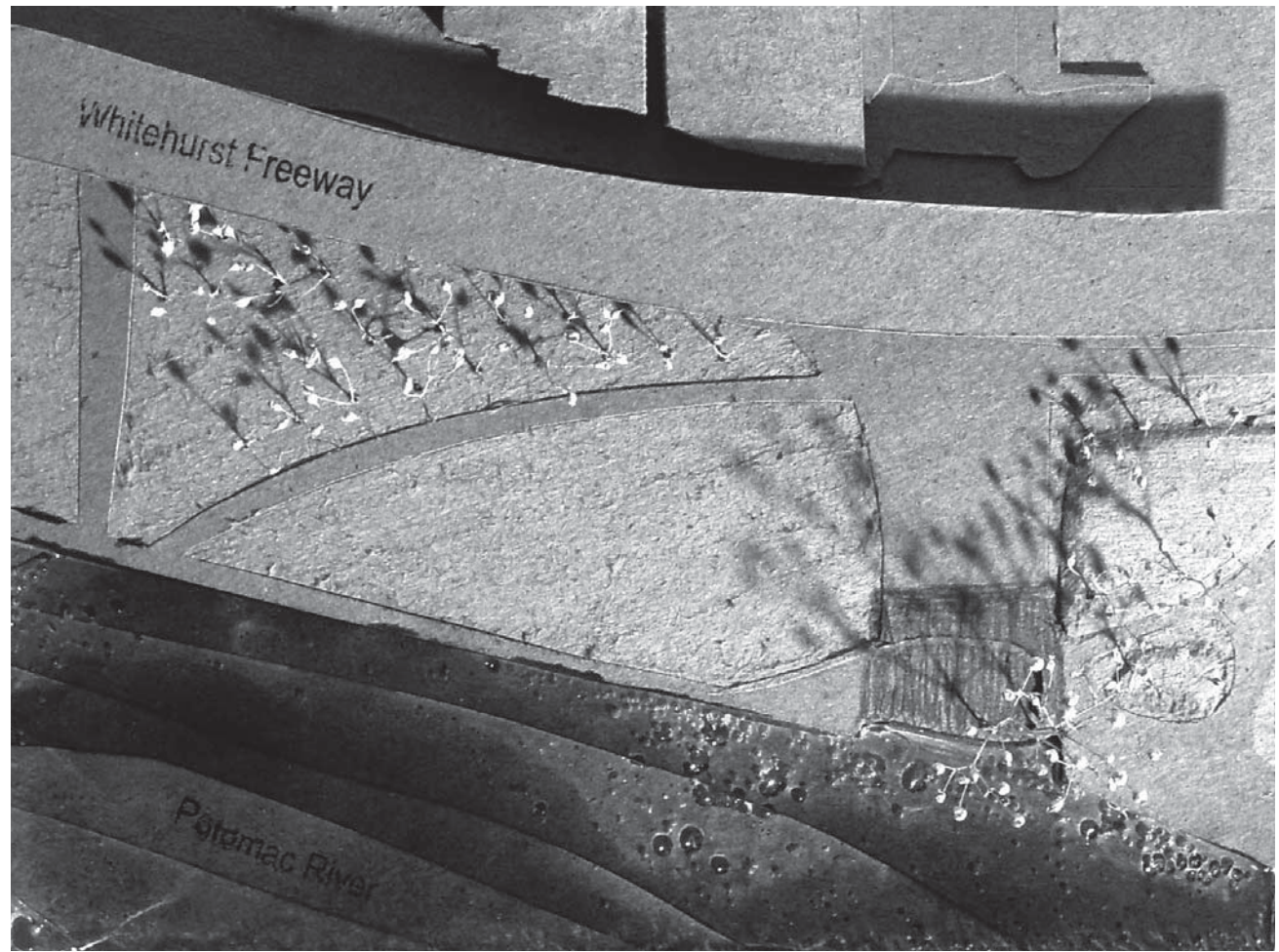
- 62. The Baist map from 1909, show the area occupied by warehouses.
- 63. In 1954, the presence of the railroads are more prevalent.
- 64. Existing site model from above
- 65. Existing site model from the Potomac River



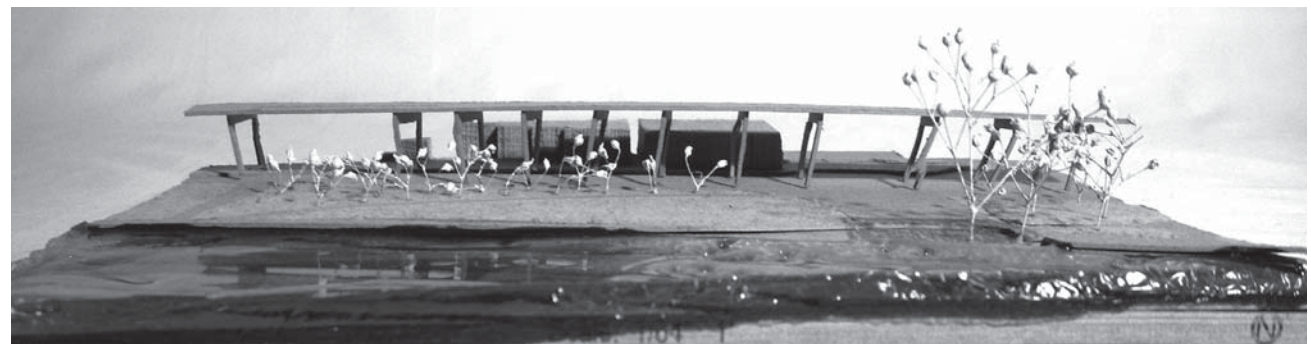
62.



63.



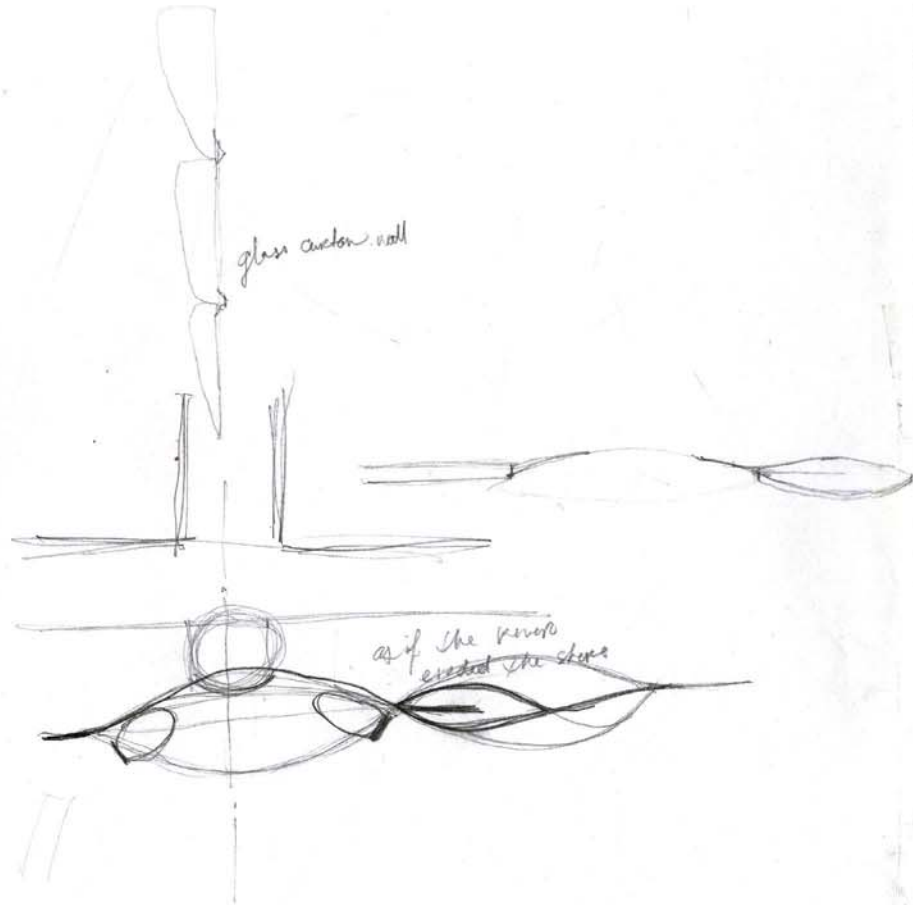
64.



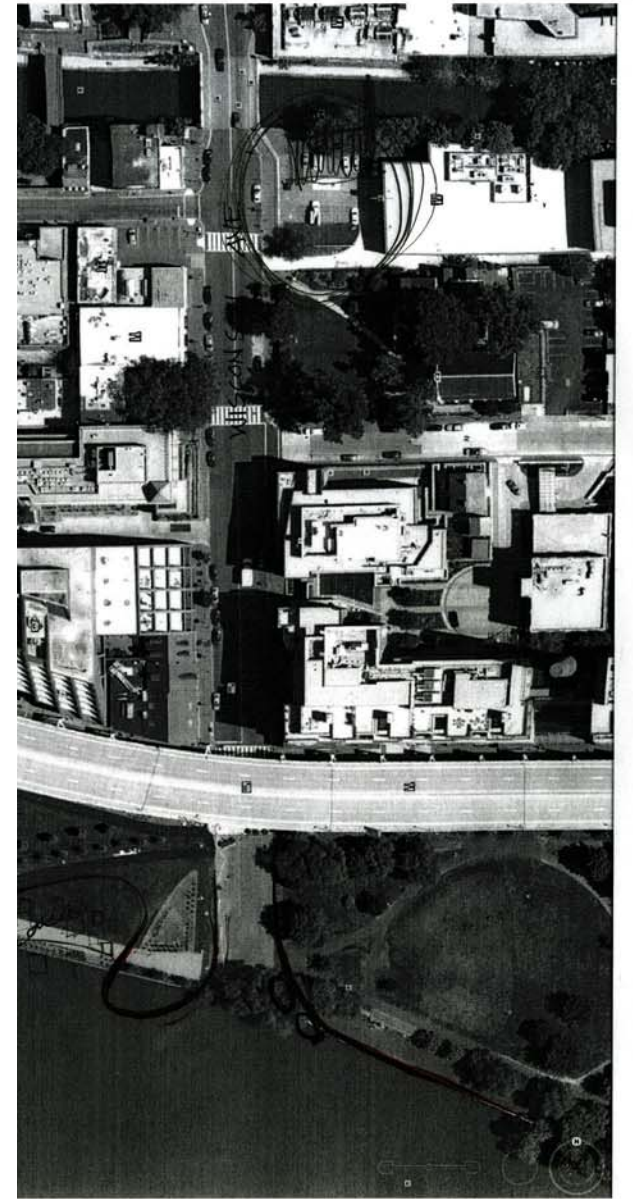
65.

TERMINAL

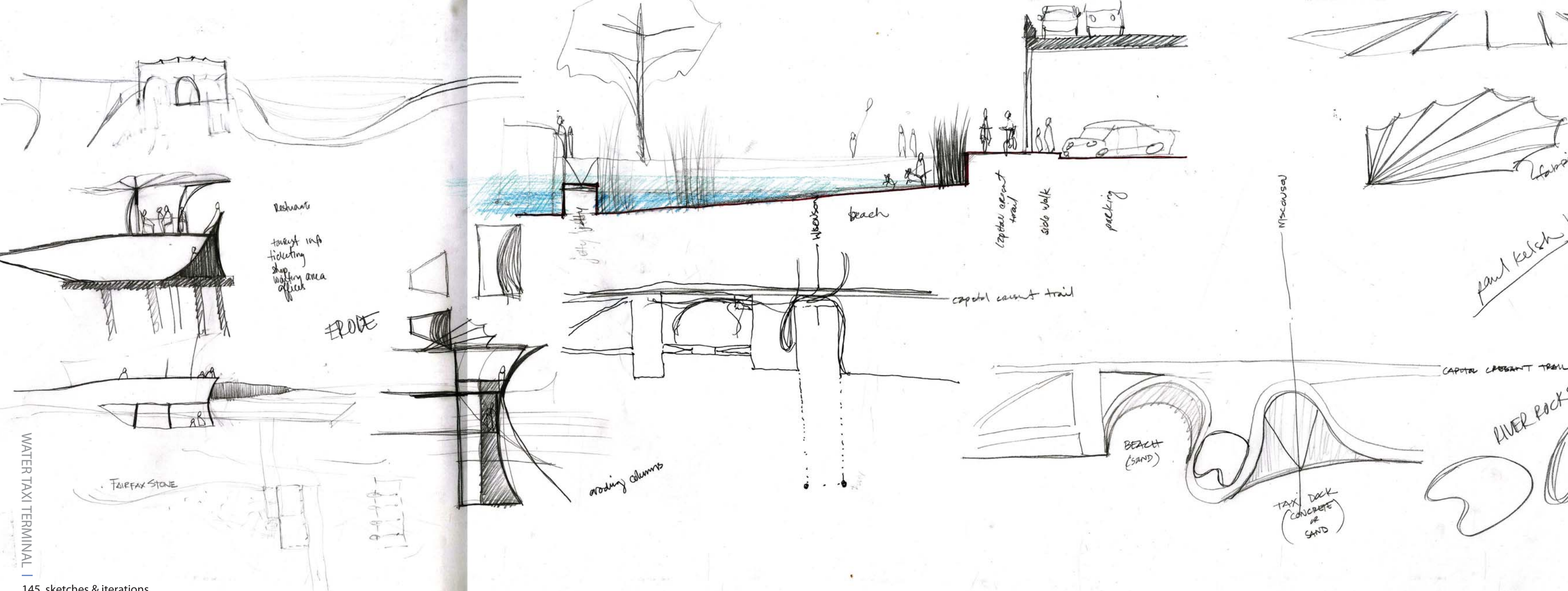
Moment of the rise?



coaten steel reflects the industrial history of the waterfront



ROLL: Inspired by the flow of the Potomac River, I knew that I wanted to play with the idea of the rise and fall of the tide. My preliminary sketches were fluid and sinuous.



There are few places in the area where people can actually interact with the water. I began to explore beaches and other ways to gradually meet the water.

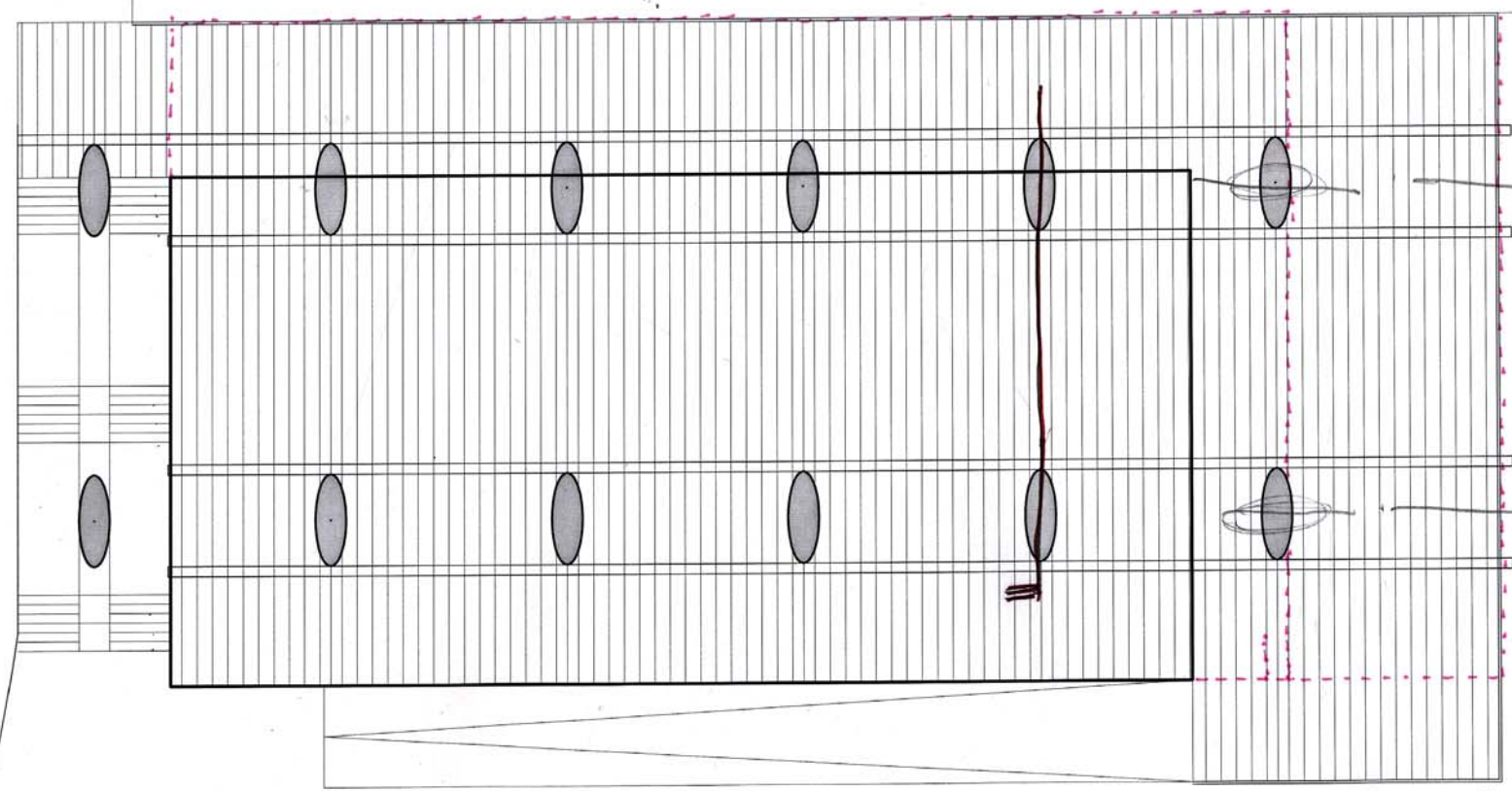
alpine
hydrology

pen
DS

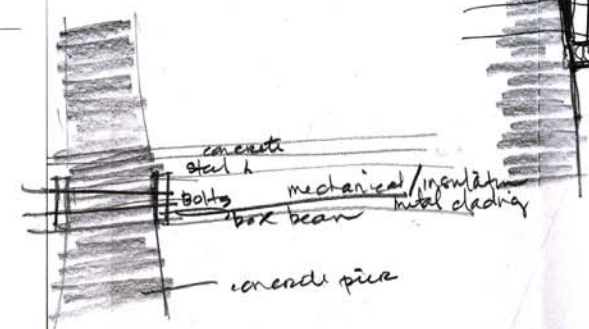
WATER TAXI TERMINAL

CAPITAL CREST TRAIL

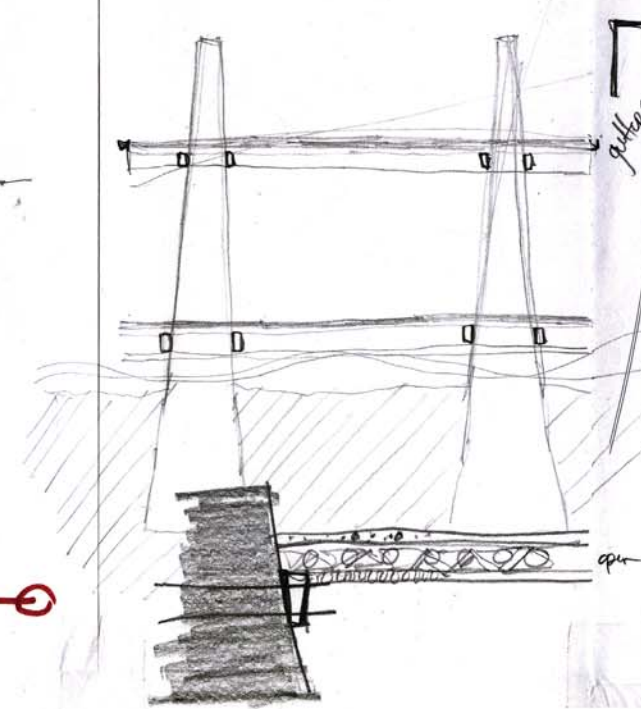
PEDESTRIAN



18' D.C.

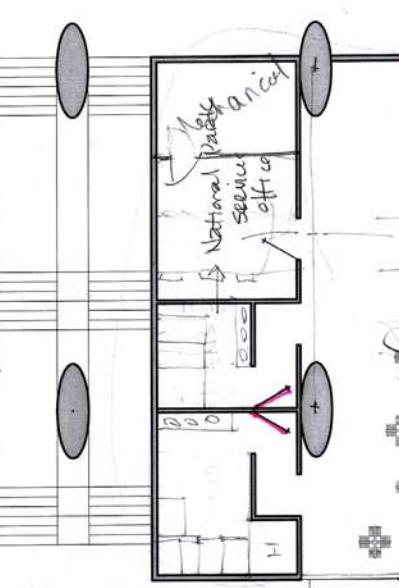
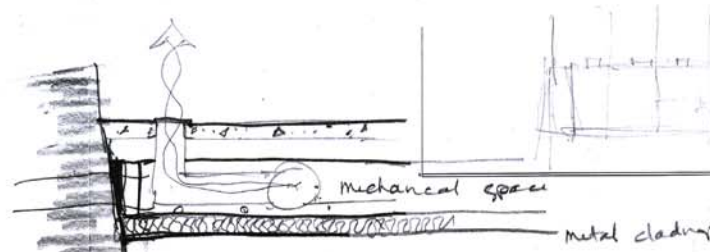


concrete
steel L
bolts
box beam
mechanical/insulation
metal cladding
concrete pier



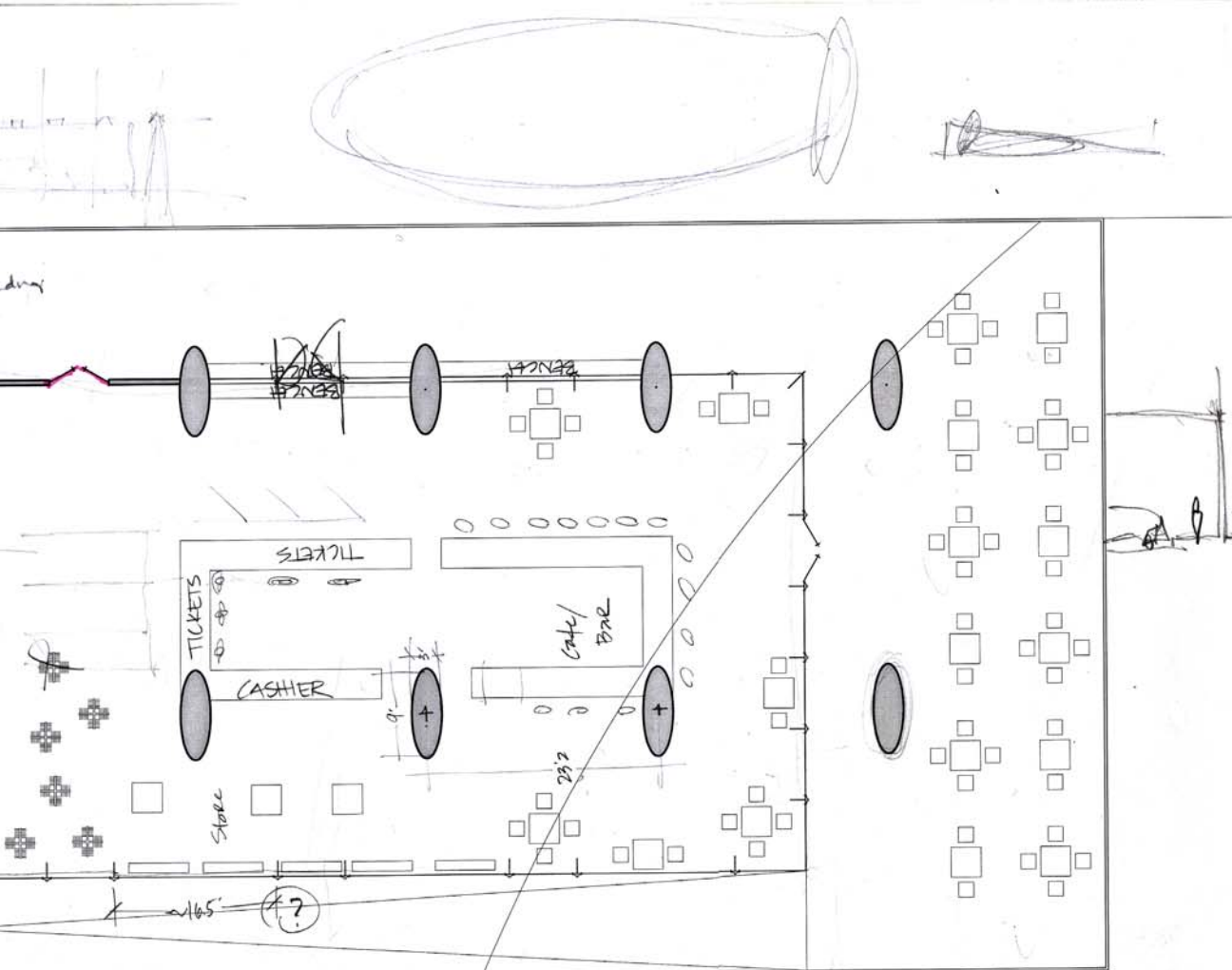
gullies
where does water go?

passive cooling
but what about heating
thicker walls for mechanical

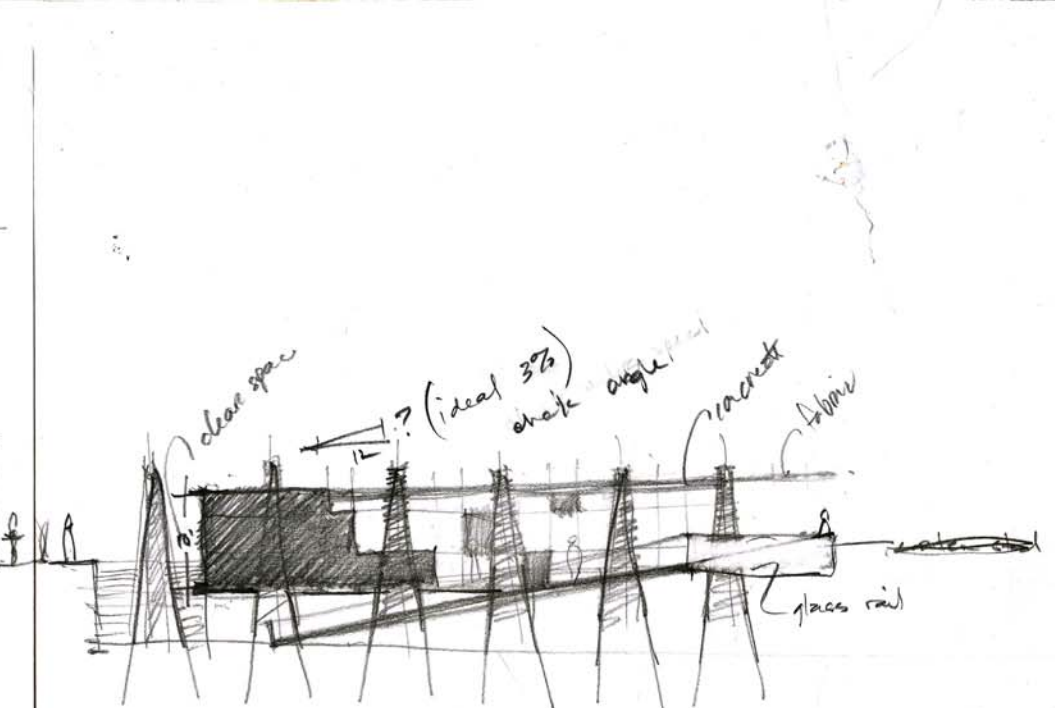


confia

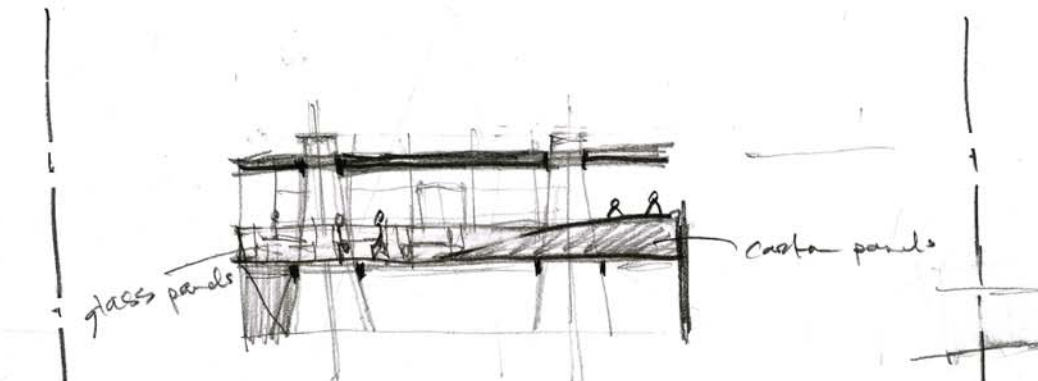
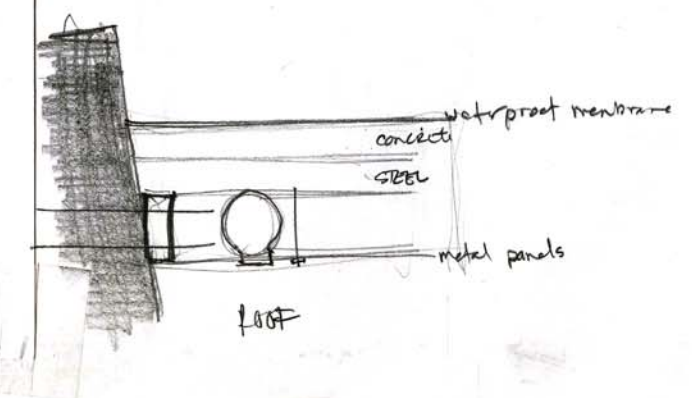
ROLL: The design of the two previous buildings influenced the structure of the final building. Piles again emerged as the primary structure, but they began to act differently in this instance.



configure bathroom



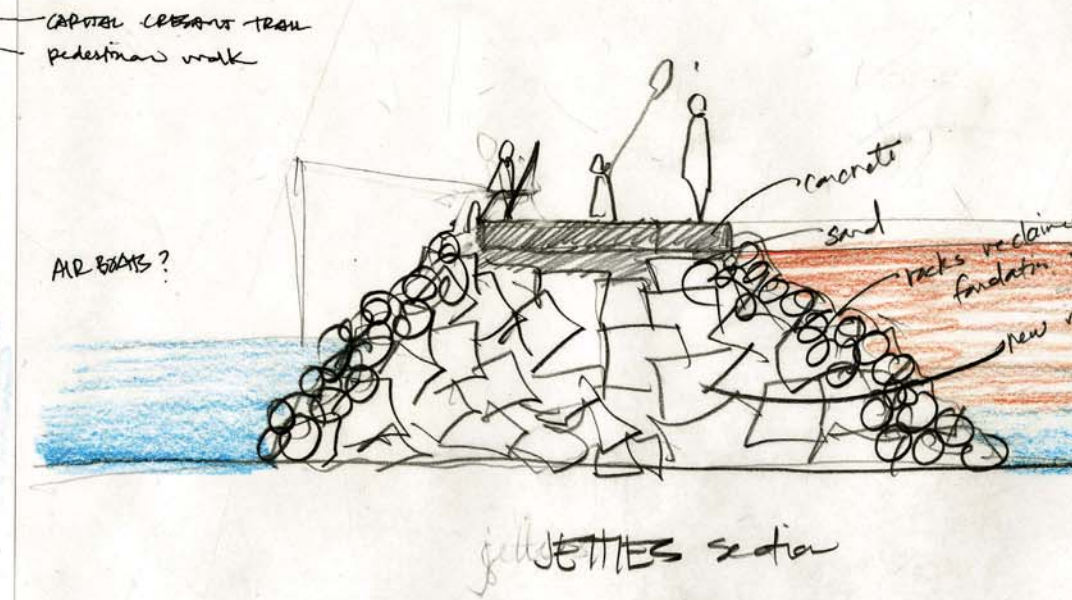
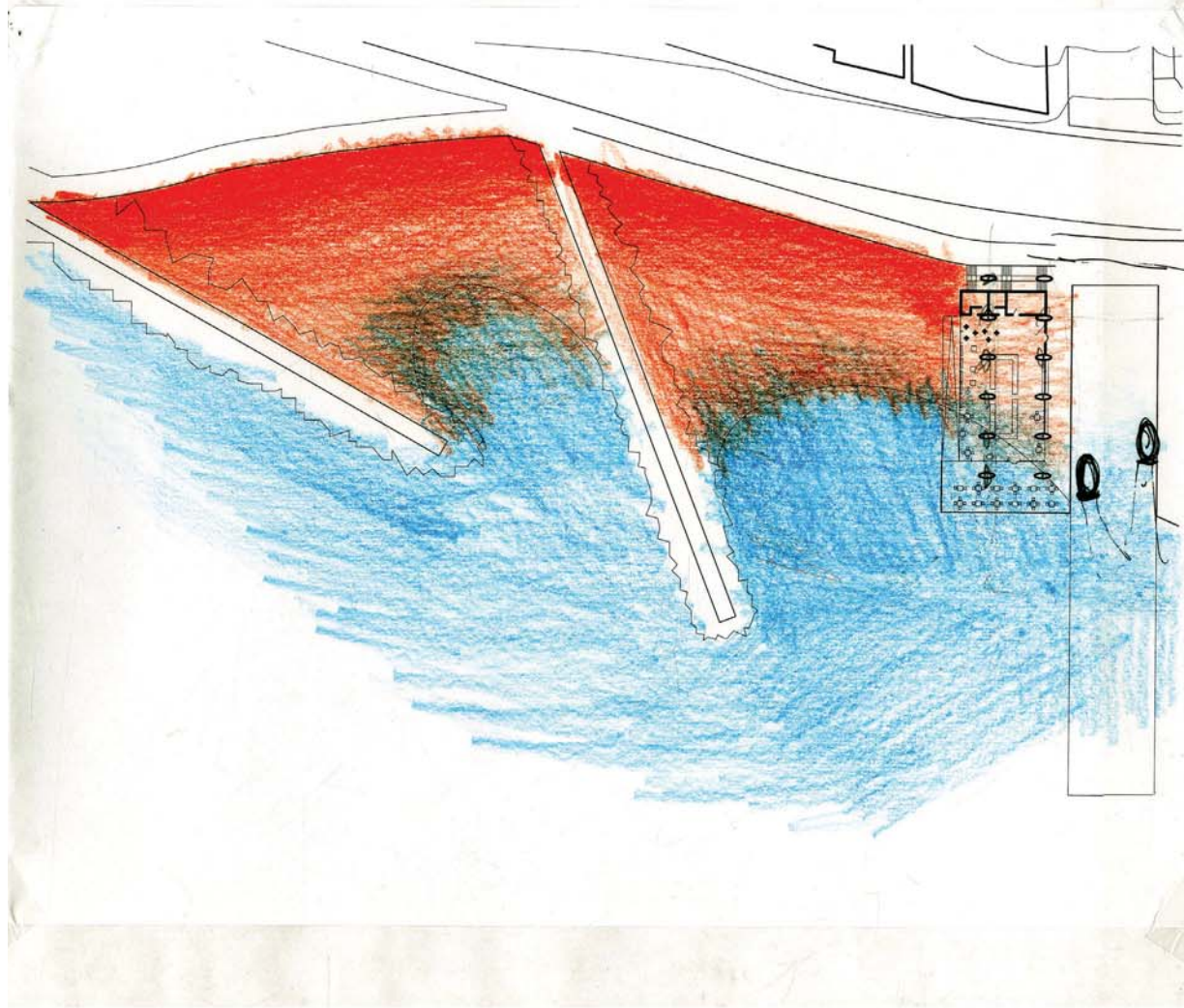
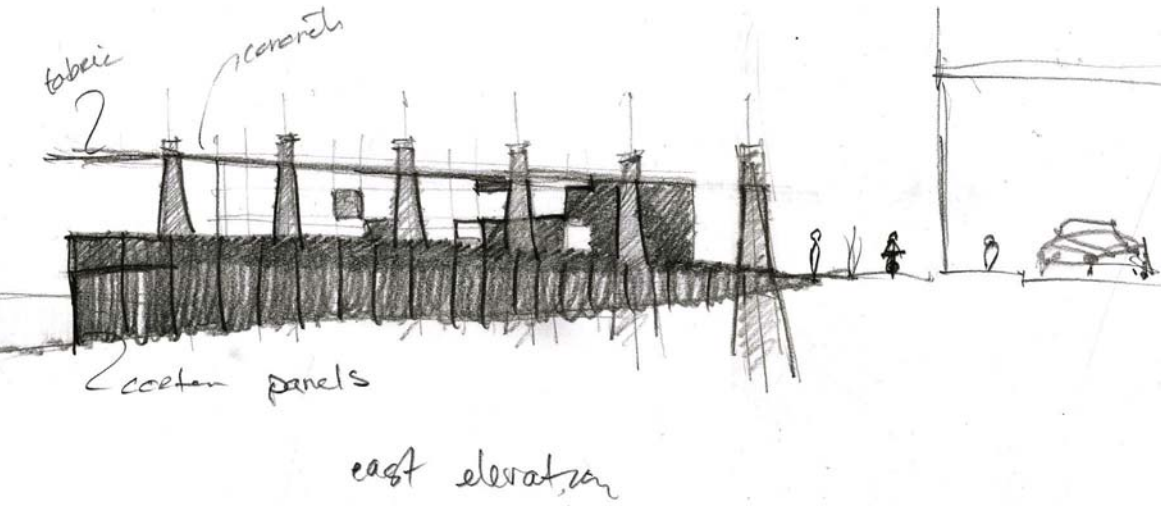
rest elevation



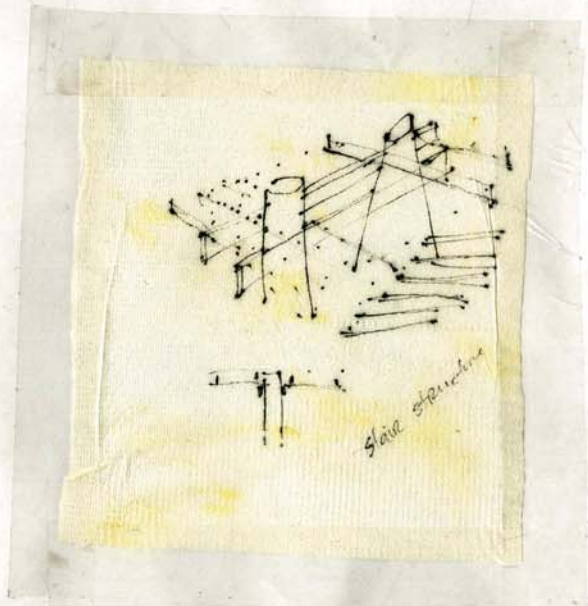
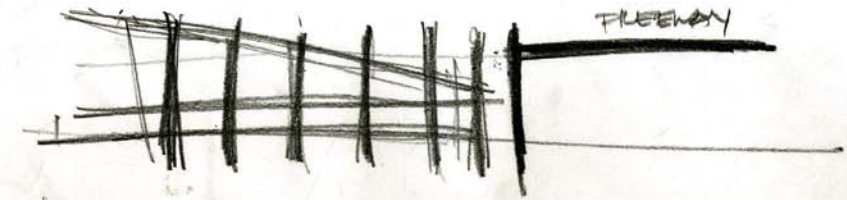
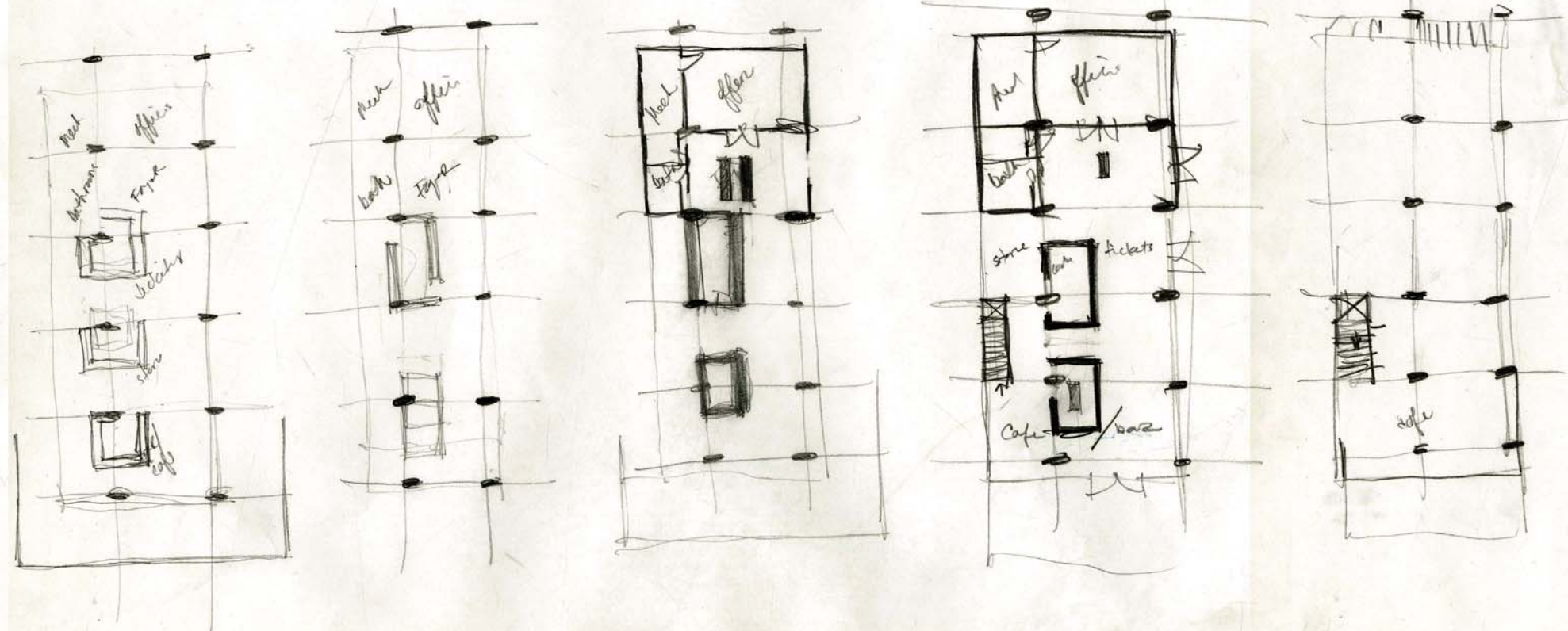
with elevation

CONFLUENCE: MIXING OF TWO

ROLL: When designing I constantly change scale. I work simultaneously in plan, section, elevation, and detail.



rocks reclaimed from
 foundation of aqueduct
 new rocks (large)



ROLL: Even though I don't have my roll with me all the time, I still sketch my ideas down and add them to the roll later. In this instance I sketched an idea I had about the structure on a napkin and added it.

Georgetown is located on the Potomac River where a confluence of waters occurs. Salt water from the ocean and fresh water from the mountains converge at the shores of Georgetown. This mixing of waters gives the Potomac River a natural dynamic movement. The concept for this building is not to symbolize the flow, but to react to the currents of the river.

The Water Taxi Terminal was inspired by the water taxis that currently travel the river. Tickets are either bought online or at the small ticket booths on the piers. Most of the time the tickets will sell out or there is no one at the booth. As more people move back into the city there is more demand for other forms of transportation. The water taxi route has the potential to connect Maryland and Virginia residents to the city faster than some methods of transportation currently available.

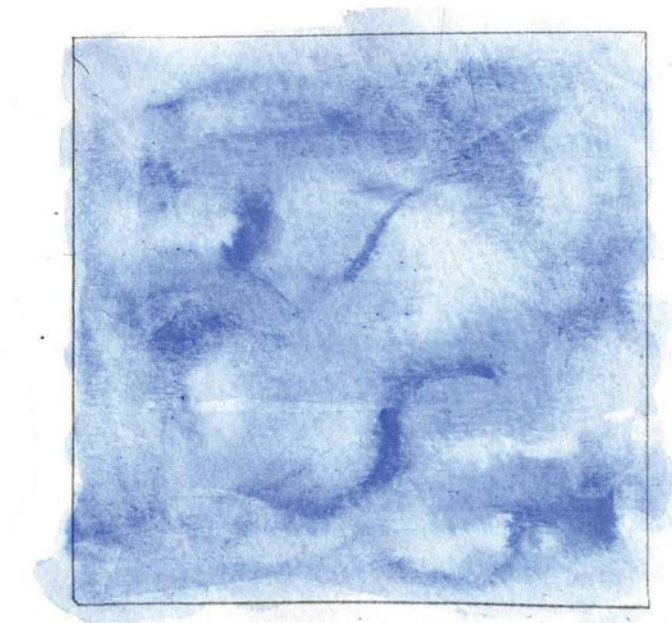
The main structure of the building is similar to that of the Visitors Center. Piles support the floors, but each set of piles are different from the next. As the piles travel further into the river they react to the currents that they are exposed to. The water flow on the furthest piles needs to circulate more rapidly than the flow of water on the piles closest to the land. Each set of piles are exposed to different currents and therefore are shaped differently. There are several instances within the building where visitors are encouraged to interact with the piles.

The landscape around the terminal also reacts to the currents of the river. Two jetties made from reclaimed stone, protect two beaches that lead visitors from the street to the Potomac River. The origins of the jetty paths come from the adjacent alleys on Waters Street. The terminal and ramp function as the third jetty protecting the beaches from erosion and flood damage.

A large ramp continues Wisconsin Avenue into the river. The ramp links the urban environment to the natural flows of the water. The water taxi vessels easily approach and depart from this port, while visitors on the other side of the building enjoy the water as well.

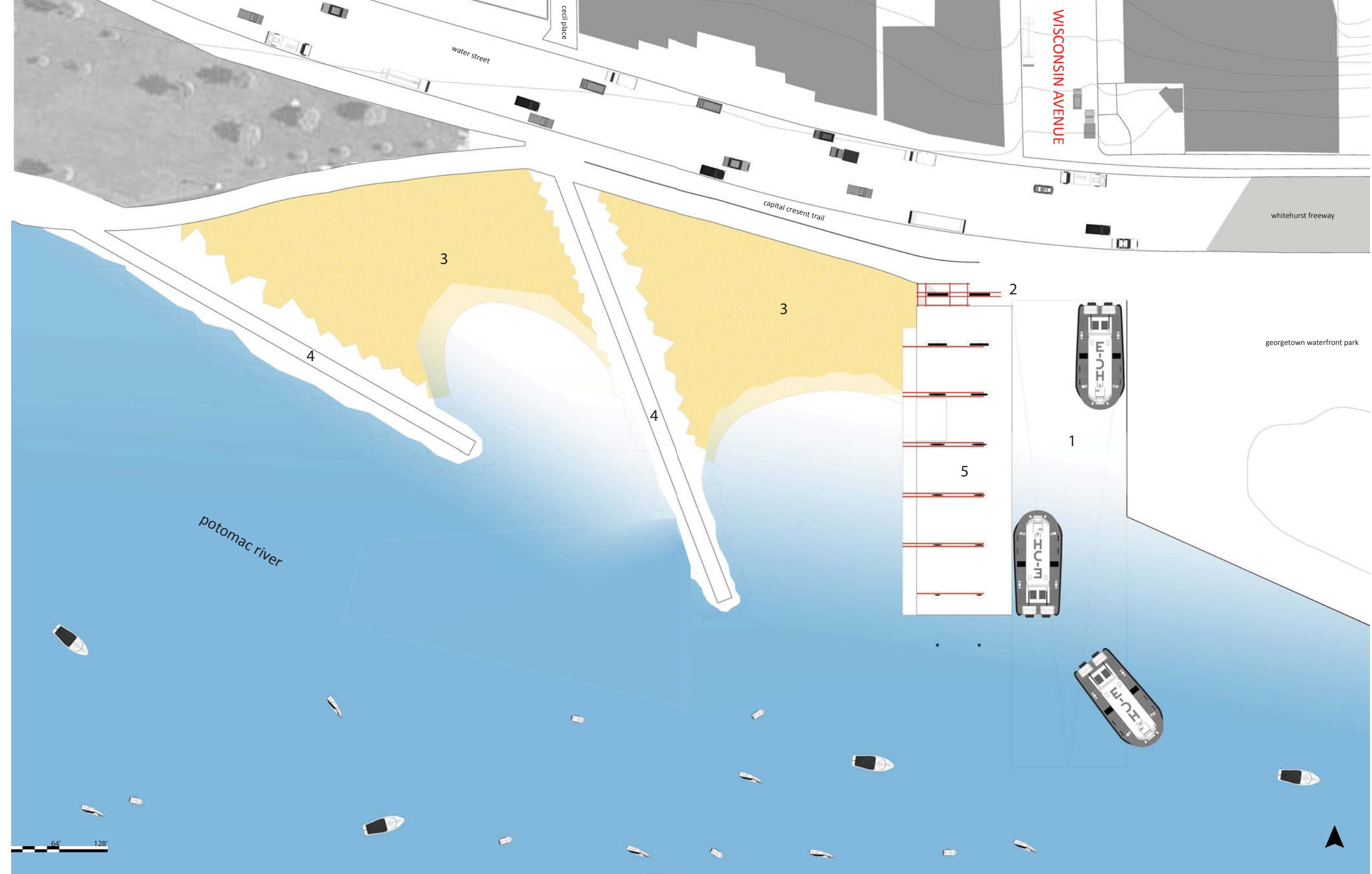
Visitors will find that the terminal is more than a ticket booth. After entering directly from the street, visitors will find the information desk and ticket counter on the main floor. Areas that require privacy like restrooms, offices, and maintenance rooms are to the back of the building; while the café, bar, and newsstand are in the front and are surrounded by glass walls allowing for views of the Potomac River.

The roof of the terminal is a terrace space that is directly accessible from the street. From here, one can get an unobstructed view up and down the Potomac River.



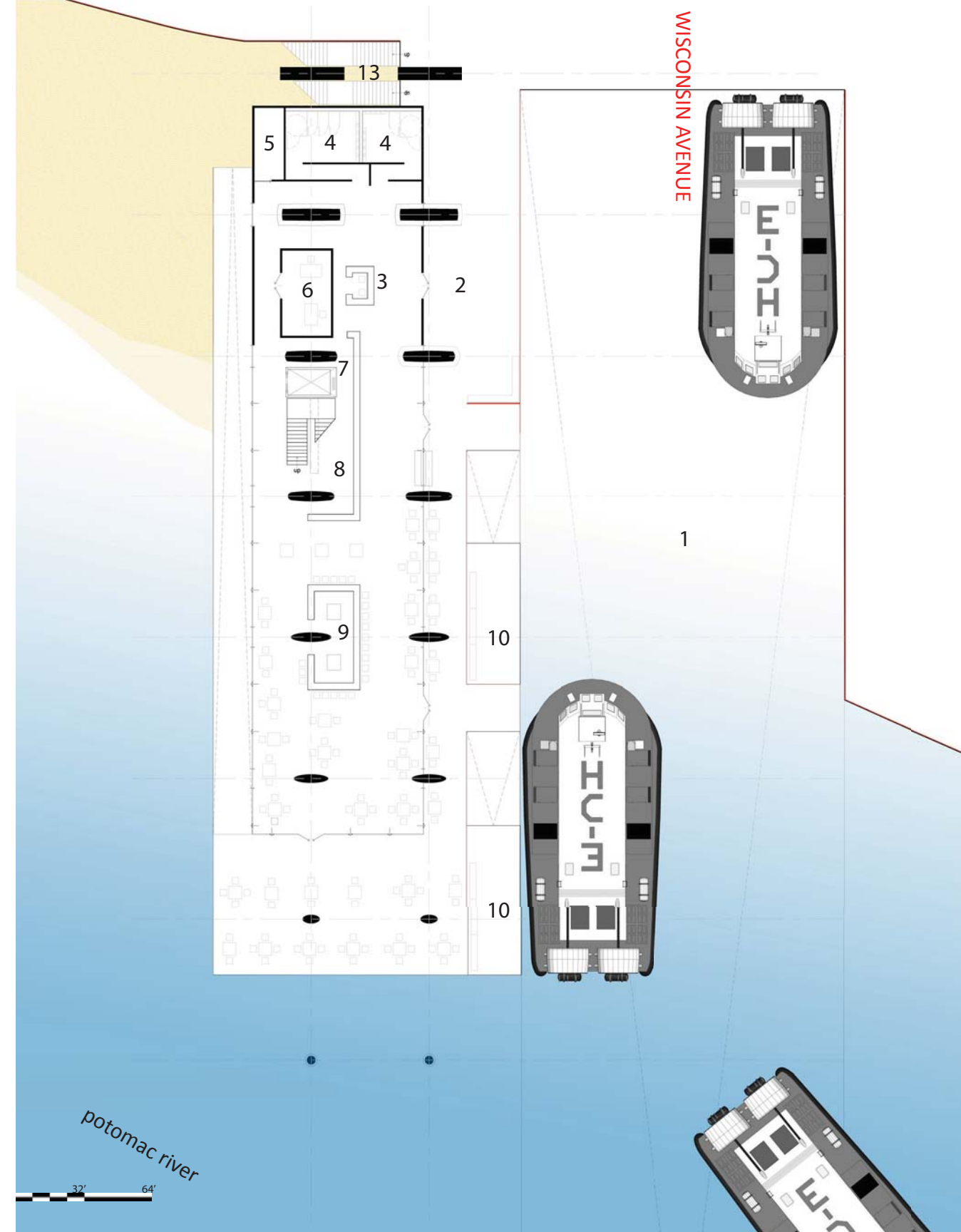
- 1. Vessel ramp
- 2. Stairs to beaches and terrace
- 3. Beach
- 4. Jetties
- 5. Terrace

157



- 1. Vessel Ramp
- 2. Entrance
- 3. Information desk
- 4. Restroom
- 5. Mechanical room
- 6. Office
- 7. Ticket counter
- 8. News stand
- 9. Cafe and Bar
- 10. Loading platform
- 11. Circulation
- 12. Terrace
- 13. Stairs to beach and terrace

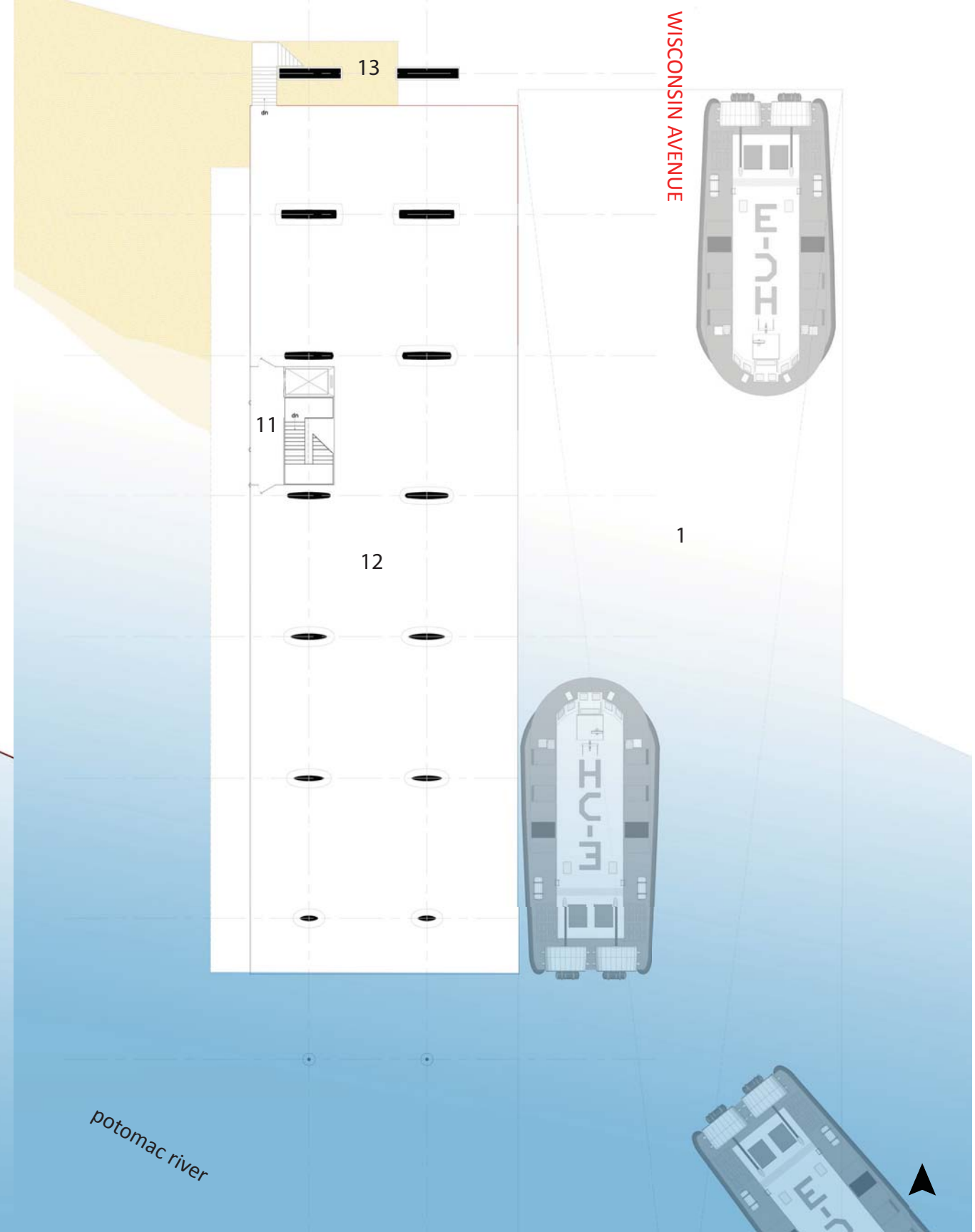
159 main floor plan



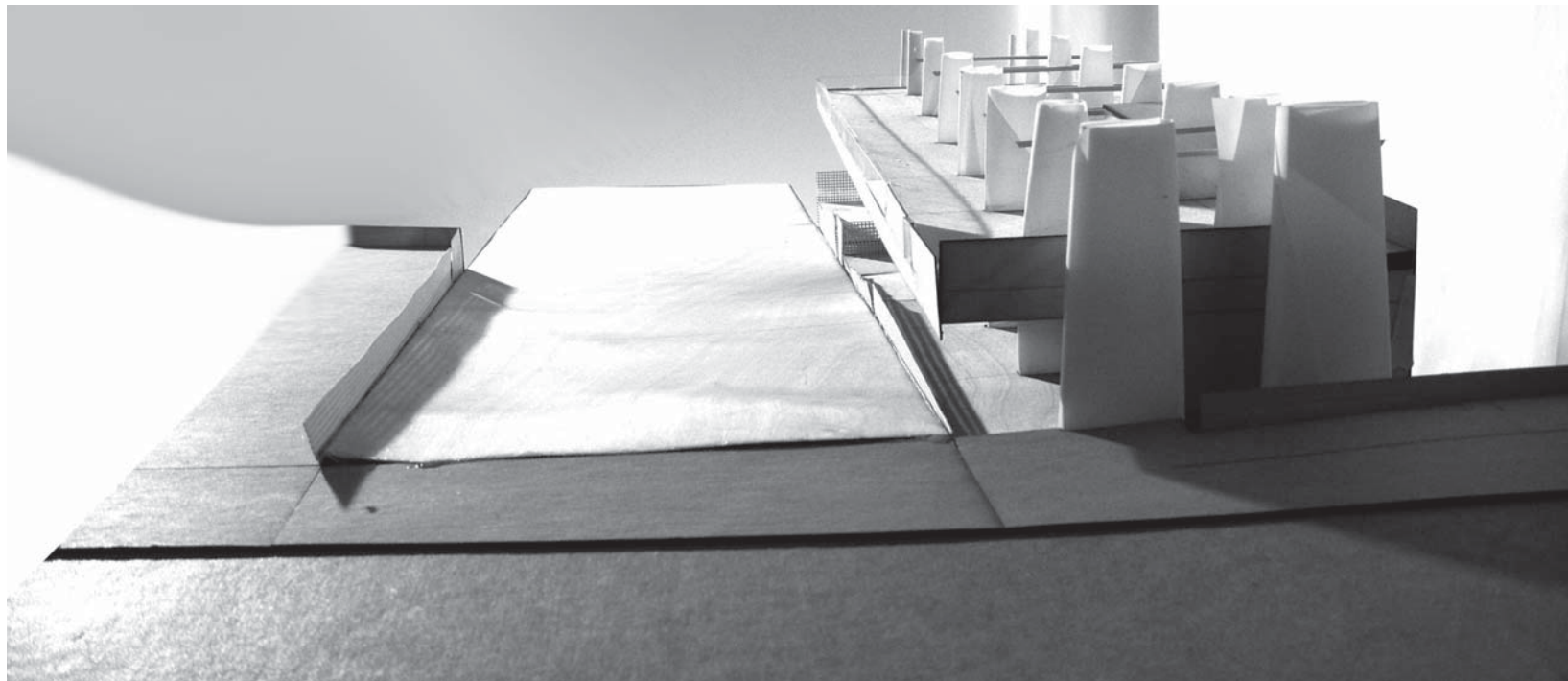
potomac river



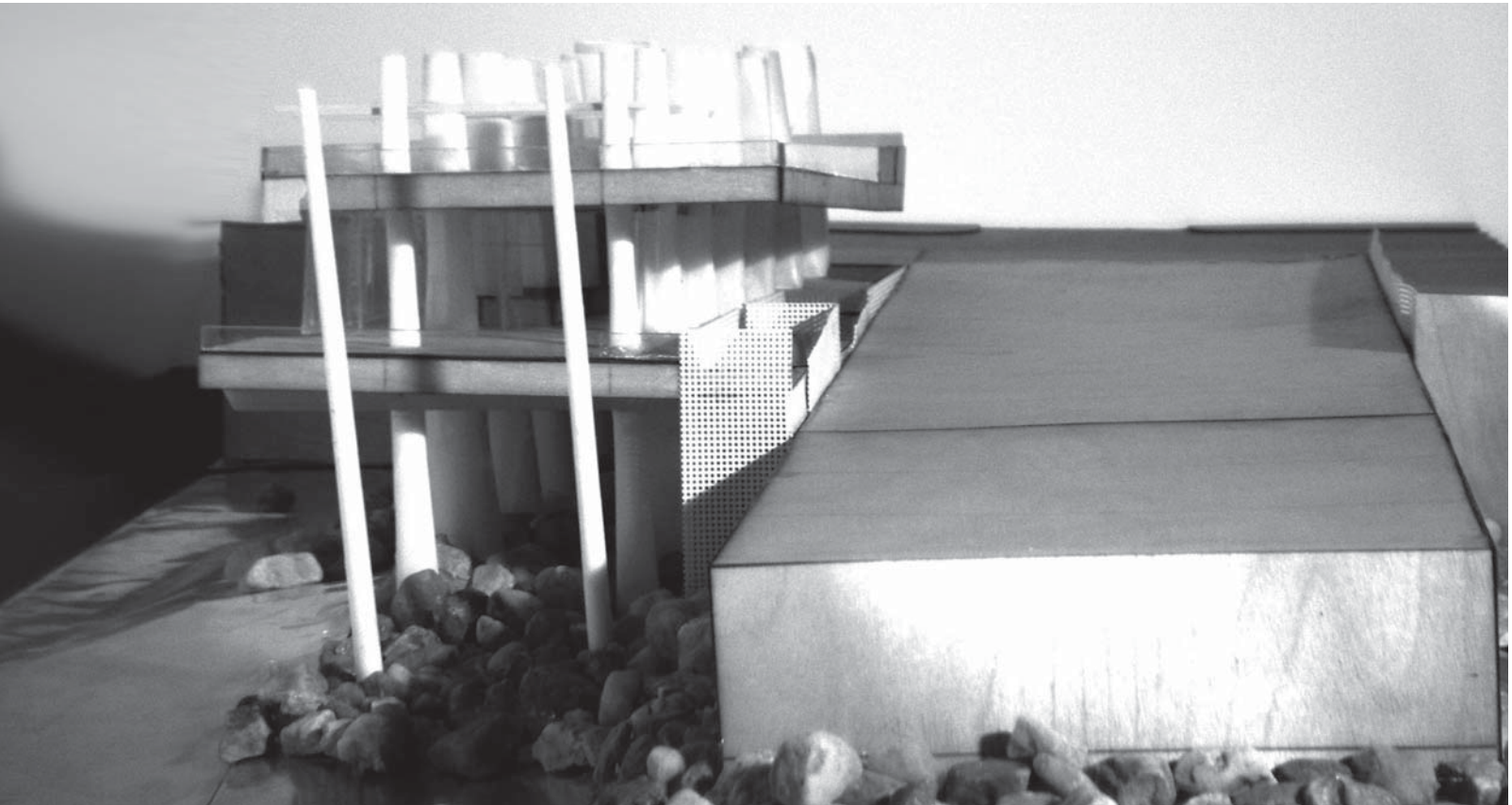
terrace plan 160



potomac river



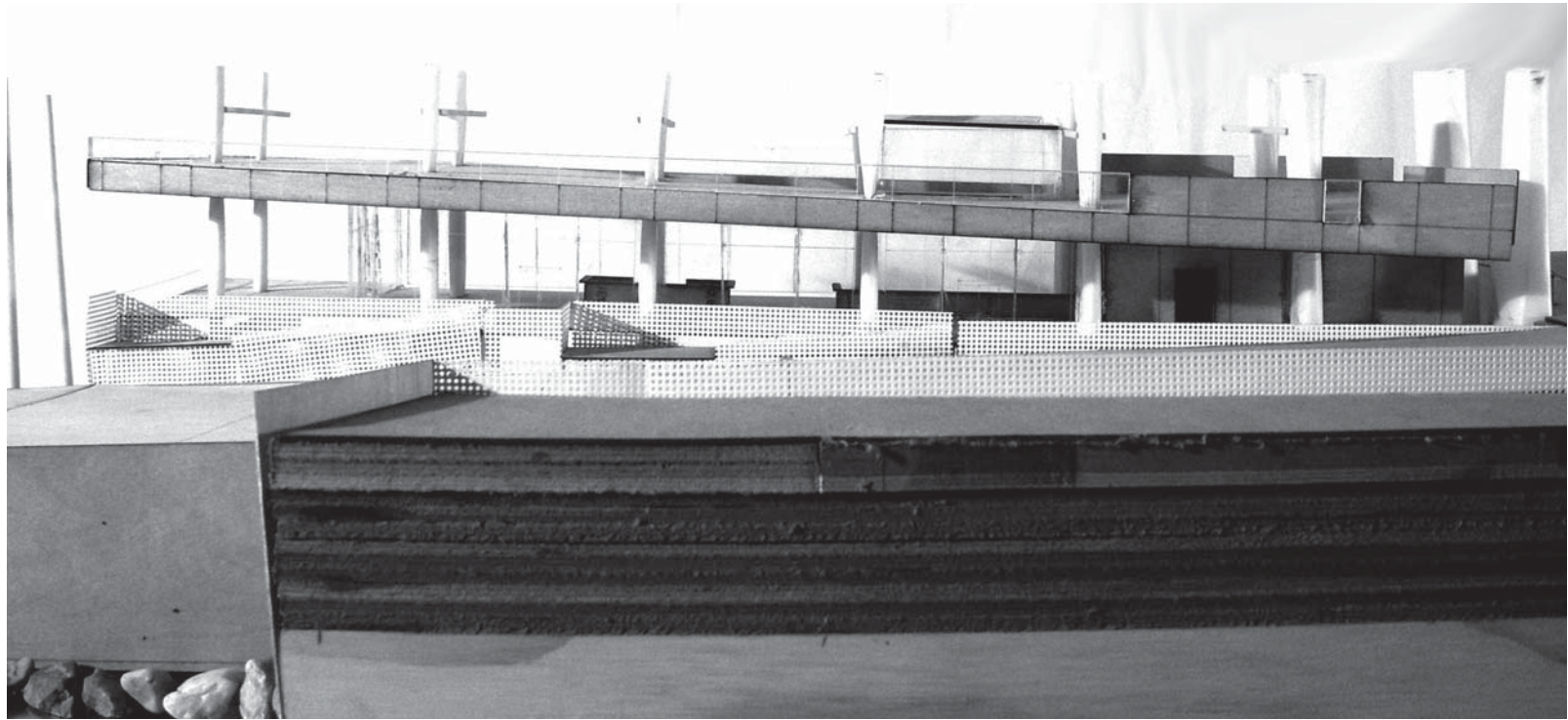
161 model north side



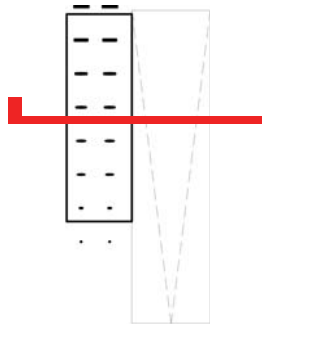
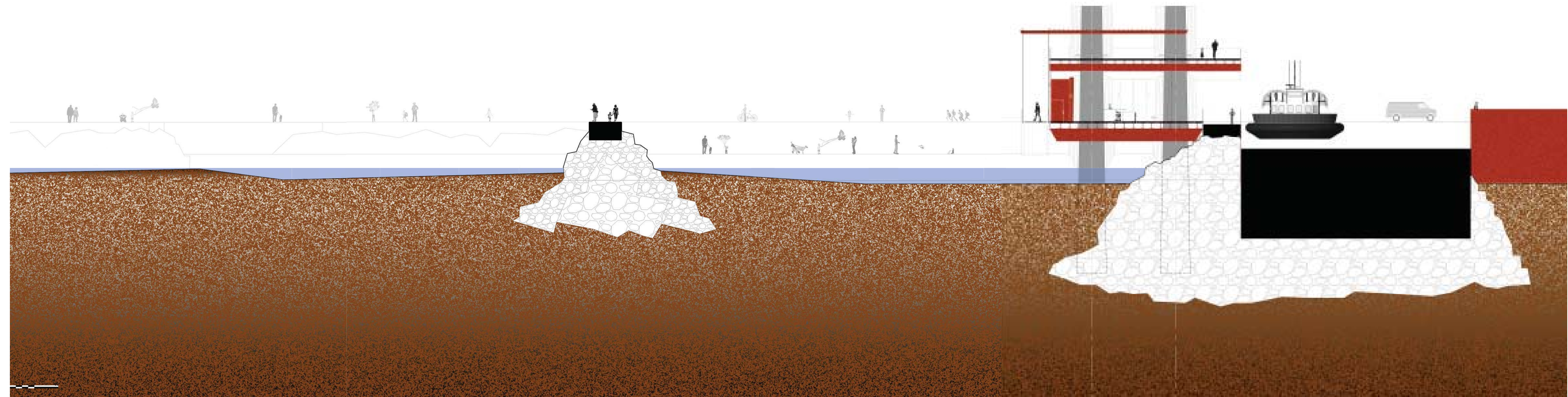
model south side 162

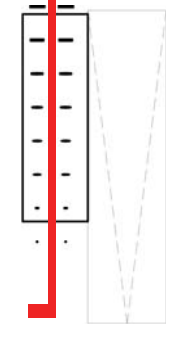
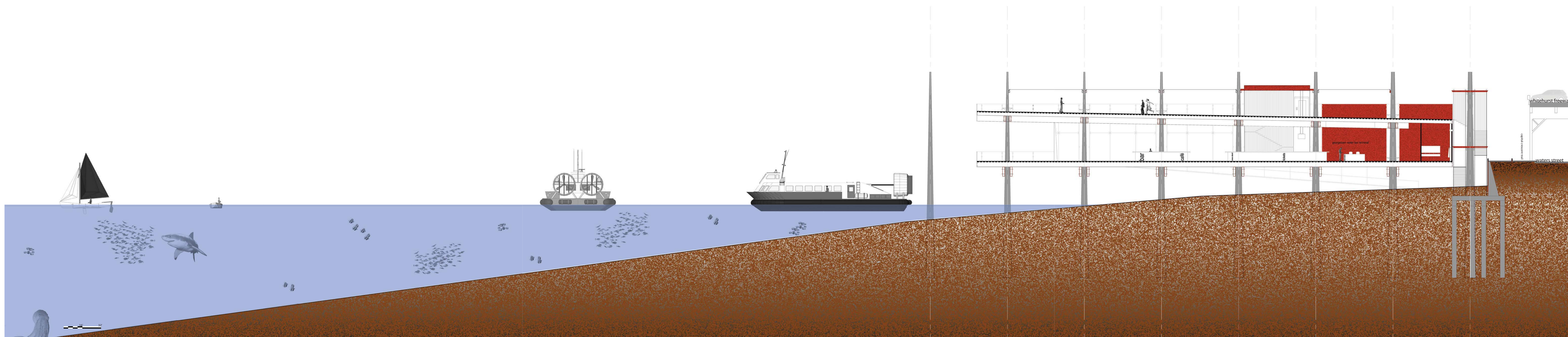


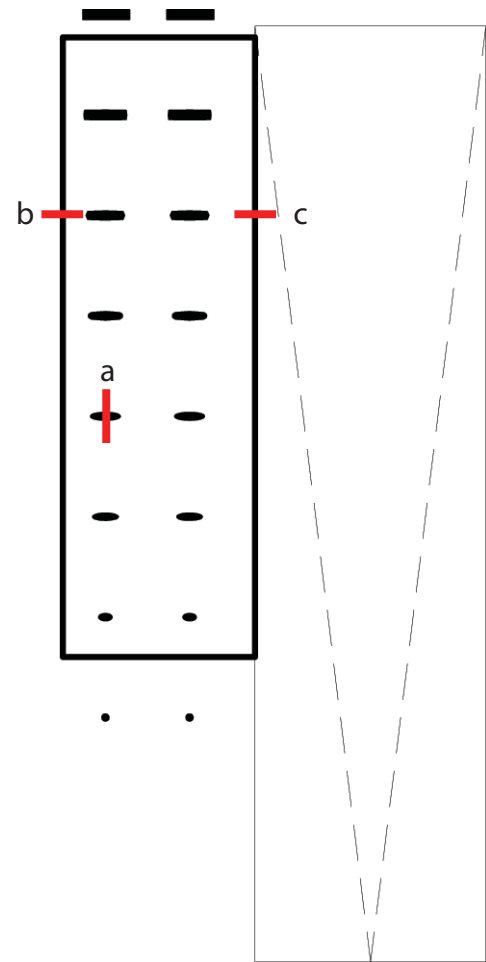
163 model west side



model east side 164

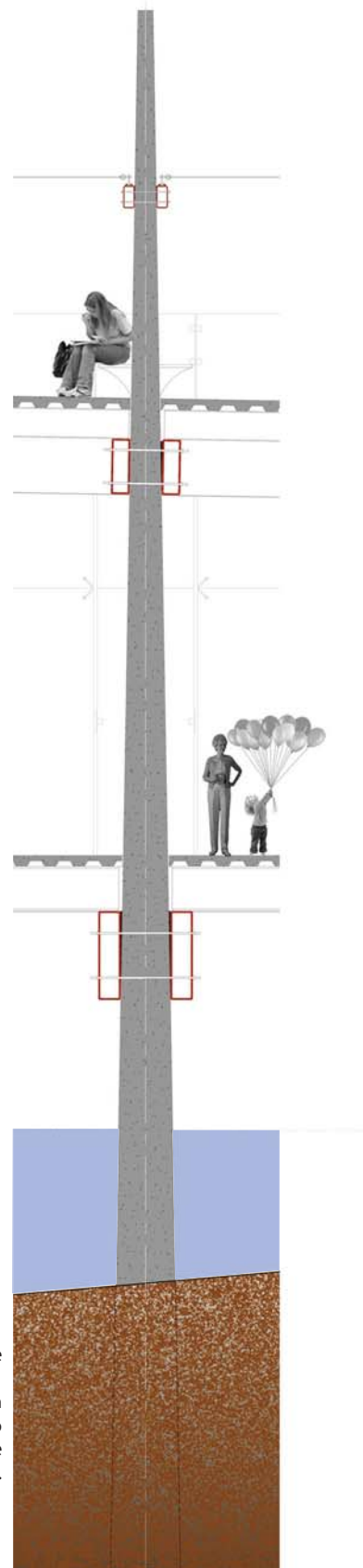




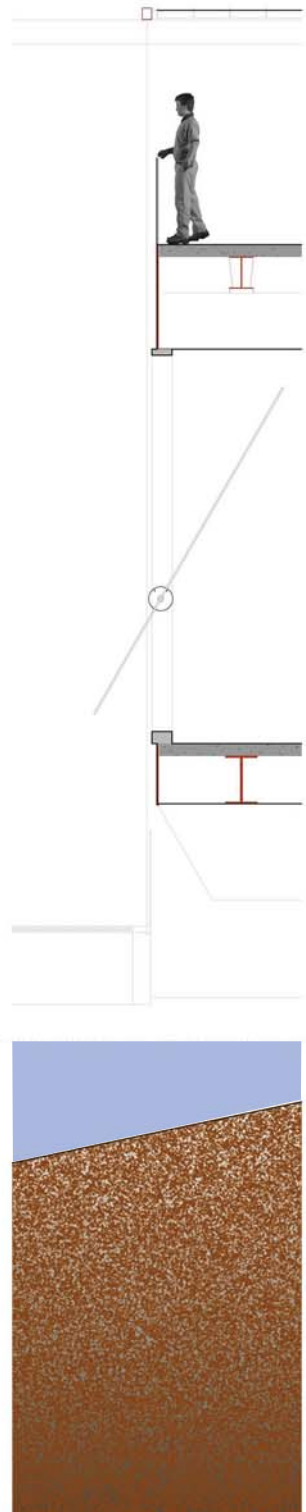


8' 16'

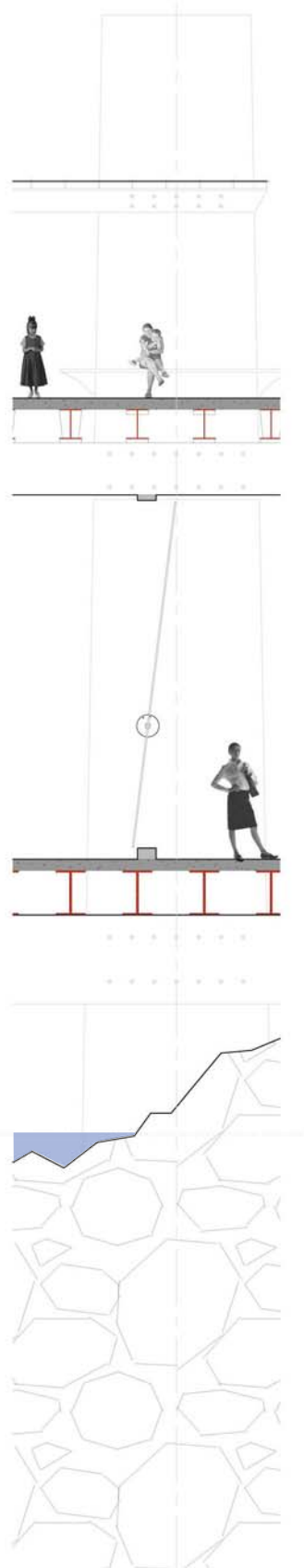
66. typical pile
Visitors are given opportunities to interact with the piles.



67. window wall
An open structure below the floor helps to keep the whole building cool in the summer months.

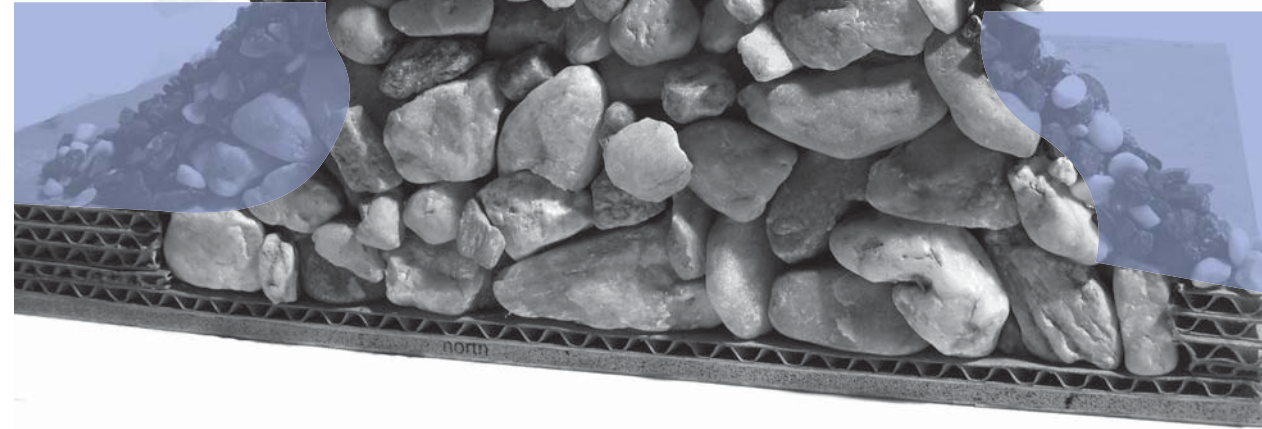
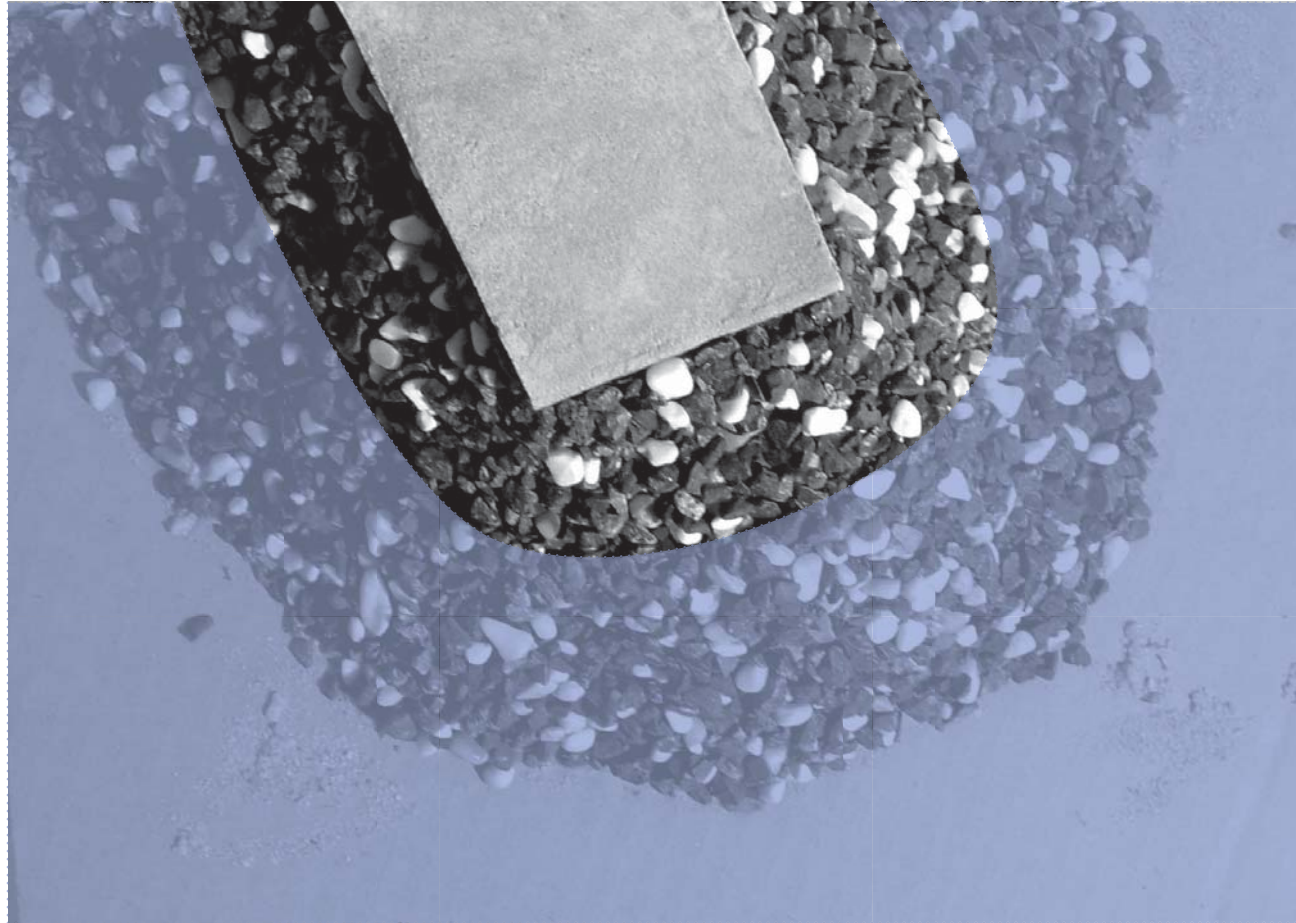


68. window at pile
Operable windows allow for passive ventilation.

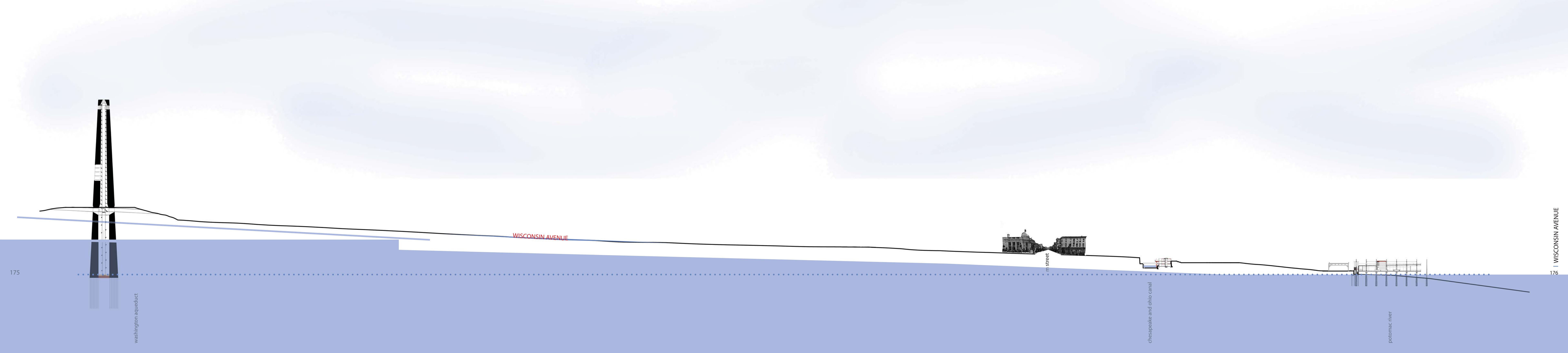


69. End of the one of the jetties from above.

70. The jetties are created using reclaimed stones from the foundations of the old Aqueduct Bridge. The outside of the jetties are covered with smaller stones and a concrete sidewalk is poured on top.







WISCONSIN AVENUE

washington aqueduct

m street

chESAPEAKE and OHIO canal

potomac river

175

176

176 | WISCONSIN AVENUE