

Figure 58, Section Sketch 1

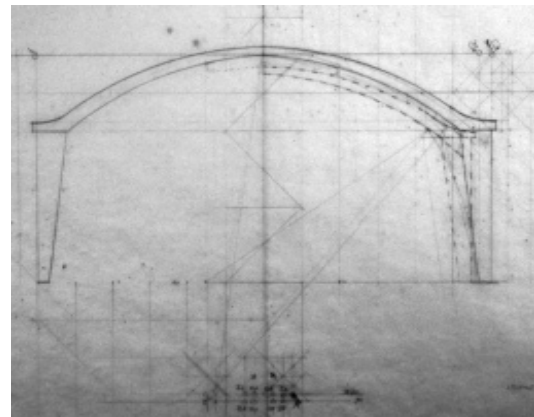


Figure 59, Section Sketch 2

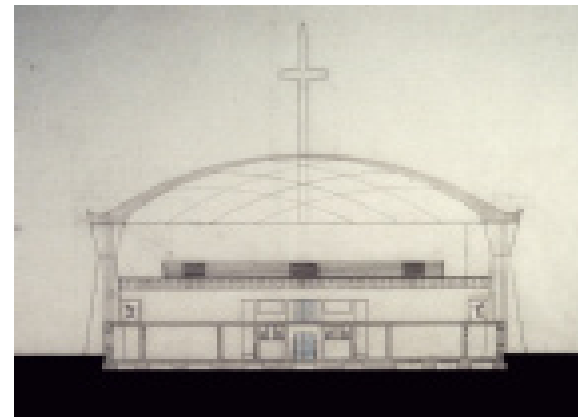


Figure 60, Section Sketch 3

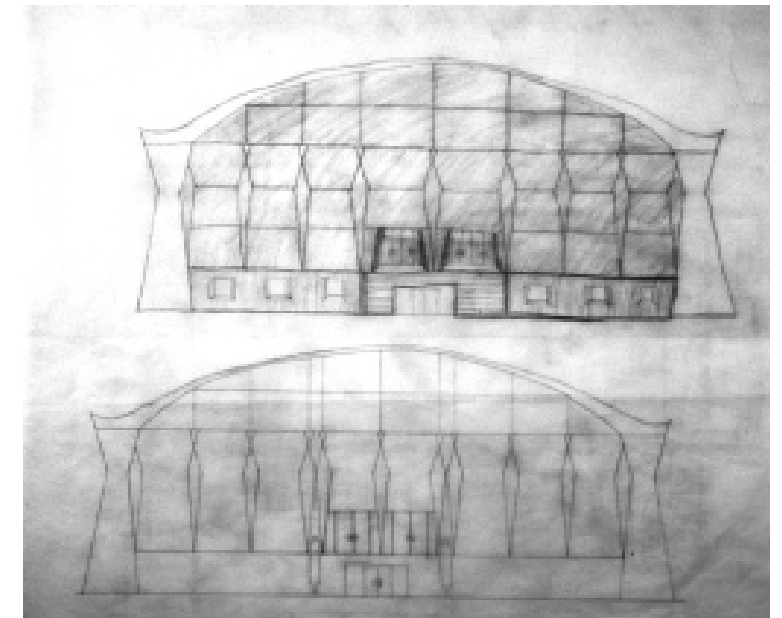


Figure 61, Elevation Studies

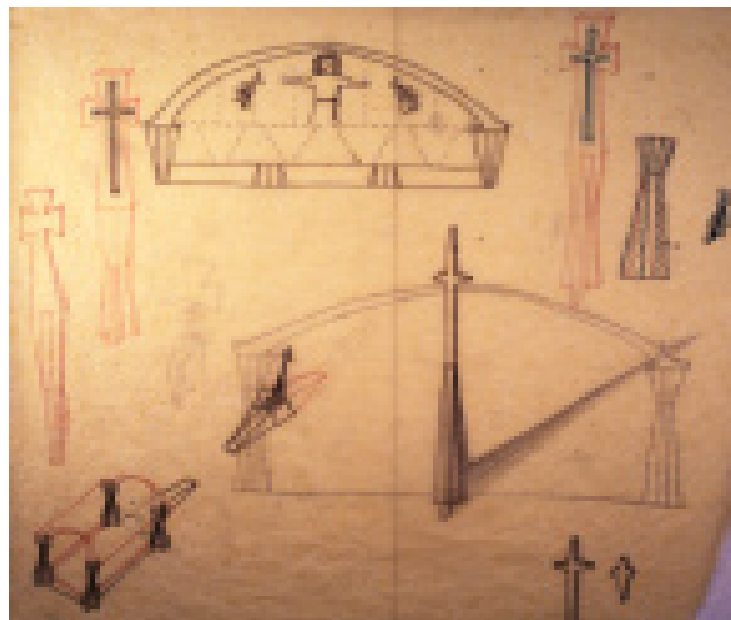


Figure 62, Structure & Cross Study

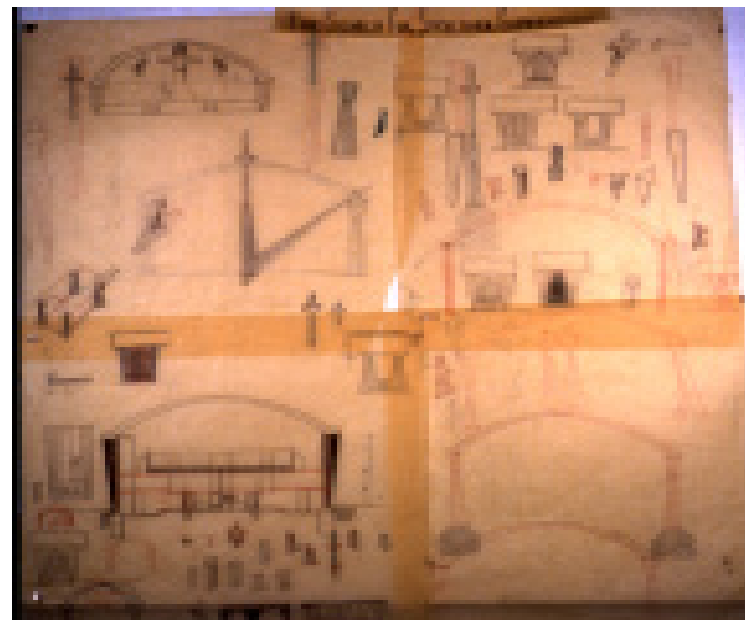


Figure 63, Various Sketches 1



Figure 64, Various Sketches 2

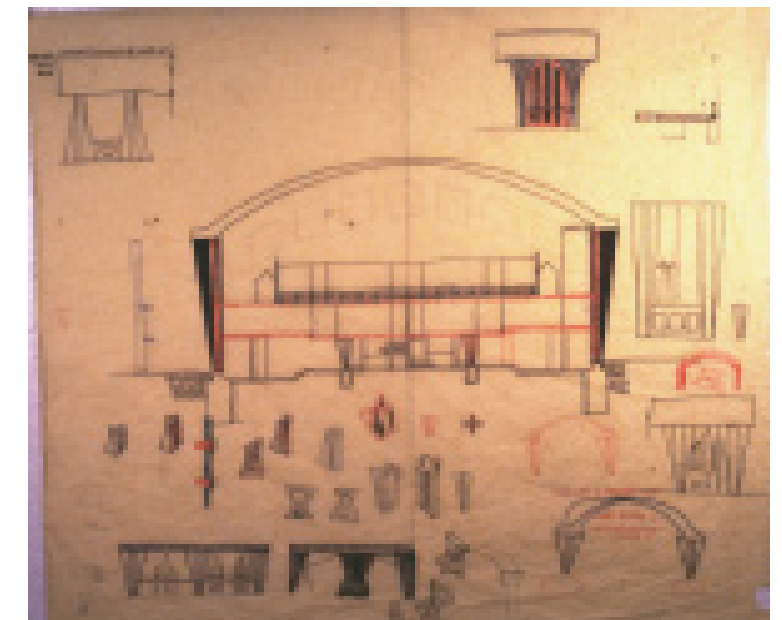


Figure 65, Various Sketches 3

GEOMETRIC SYNTHESIS

A geometric synthesis of sorts was devised to generate a dimensional rhythm at which events occur in plan. Geometry was the foundation used to formalize the relationships among forms and space within the building organization. As evidenced from the plan, a diversity of spaces and voids ensued based on the requirements of the program. The resulting spaces acknowledge the hierarchy inherent in the functions they accommodate and the users they serve.

The project is aligned along a single axis. Sufficient space remains on the site to accommodate two additional buildings which would address the commercial and recreational needs of the church. The future facilities which would be on the north and south side of the parking lot would also help to screen the parking lot from the street. However for the initial phase, all of the elements on the site plan will be aligned along a single axis. Apparent in the building plan is a hierarchy achieved by the manipulation of space and shape relative to other elements. The repetition of select elements creates a rhythm that will ultimately define the building.

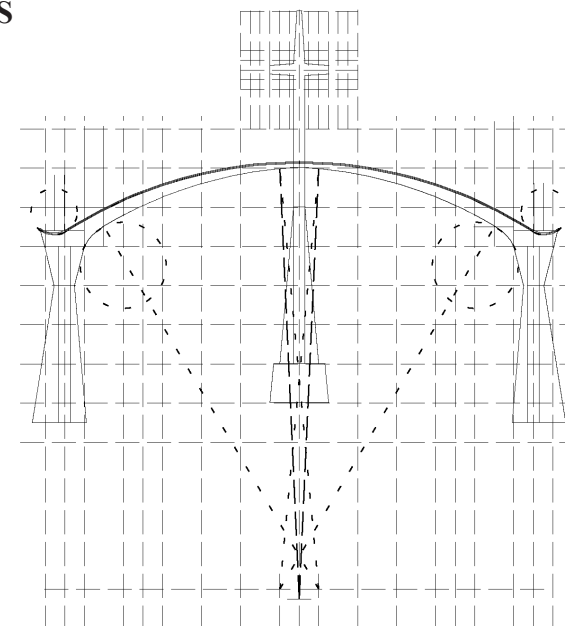


Figure 67, Structural Geometric Synthesis

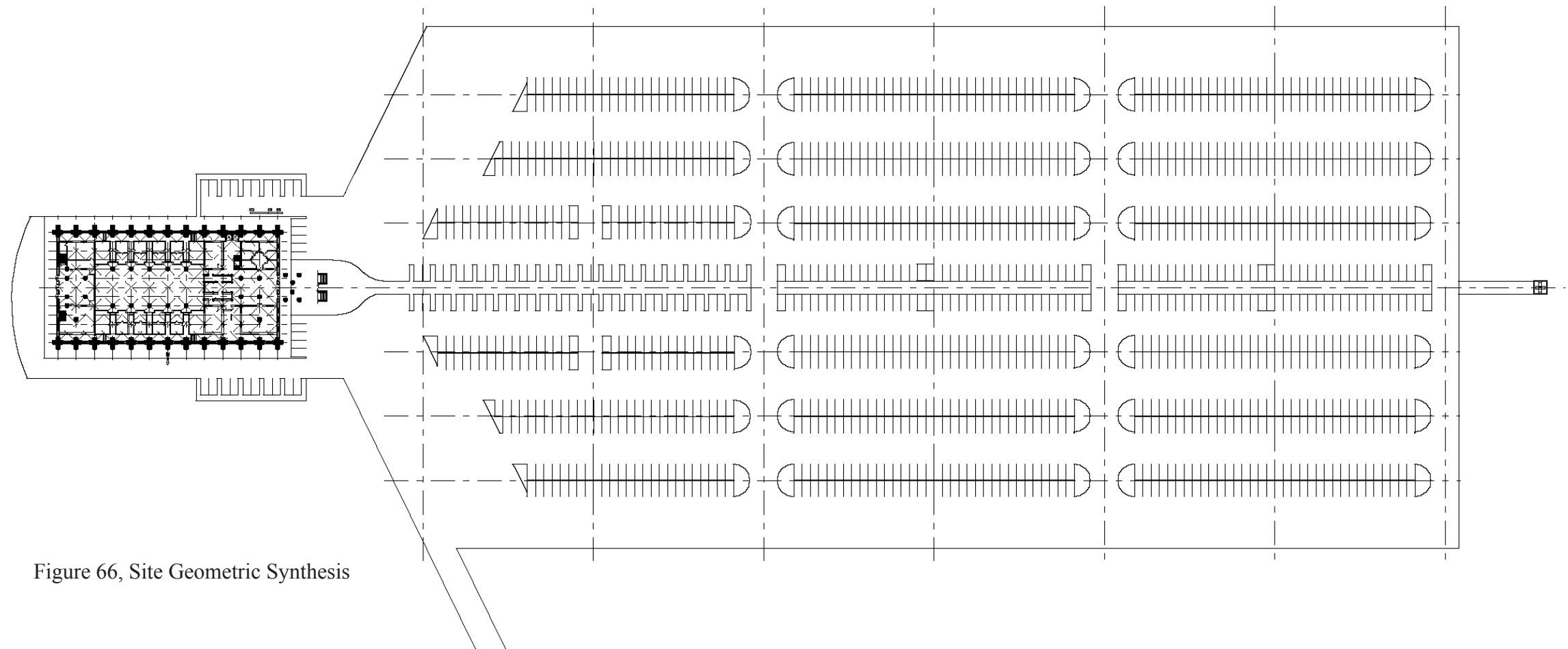


Figure 66, Site Geometric Synthesis

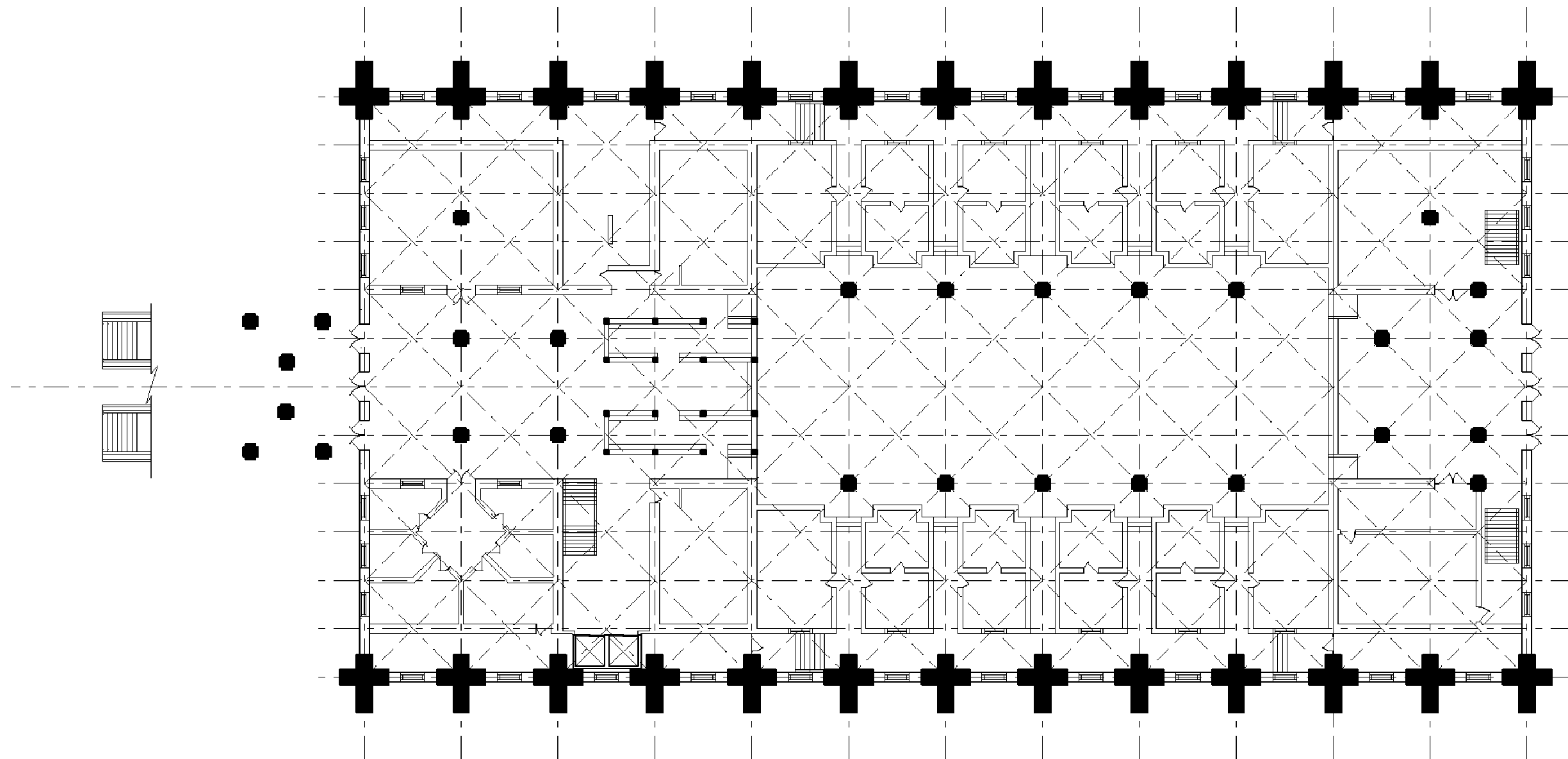


Figure 68, Plan Geometric Synthesis