
STUDY MODELS

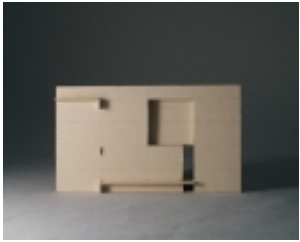


Using a set of transformational rules, I created a series of small study models, or "objects." The objects shared two opposing qualities - order and playfulness - and became the fundamental tools for creating the architecture school. They were a method of sketching in three-dimensions to compose a harmonious whole and a multitude of ideas for rooms and spaces. The objects were created to express a playful array of planes showing juxtaposing obverse qualities such as solid and void, inside and outside, and order and variation. These architectural qualities embody the characteristics of the architecture school that I want to create - a "rational playground."

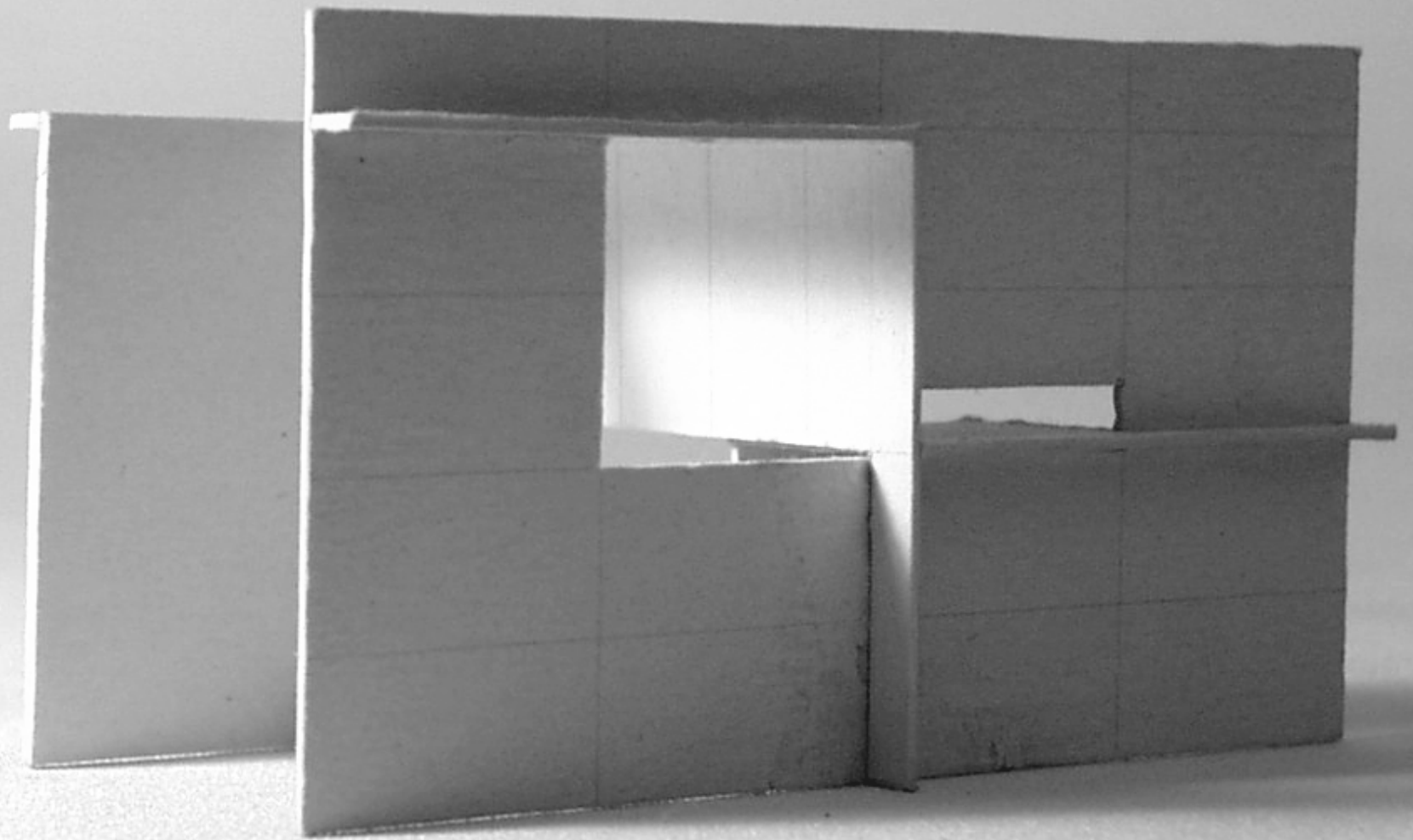


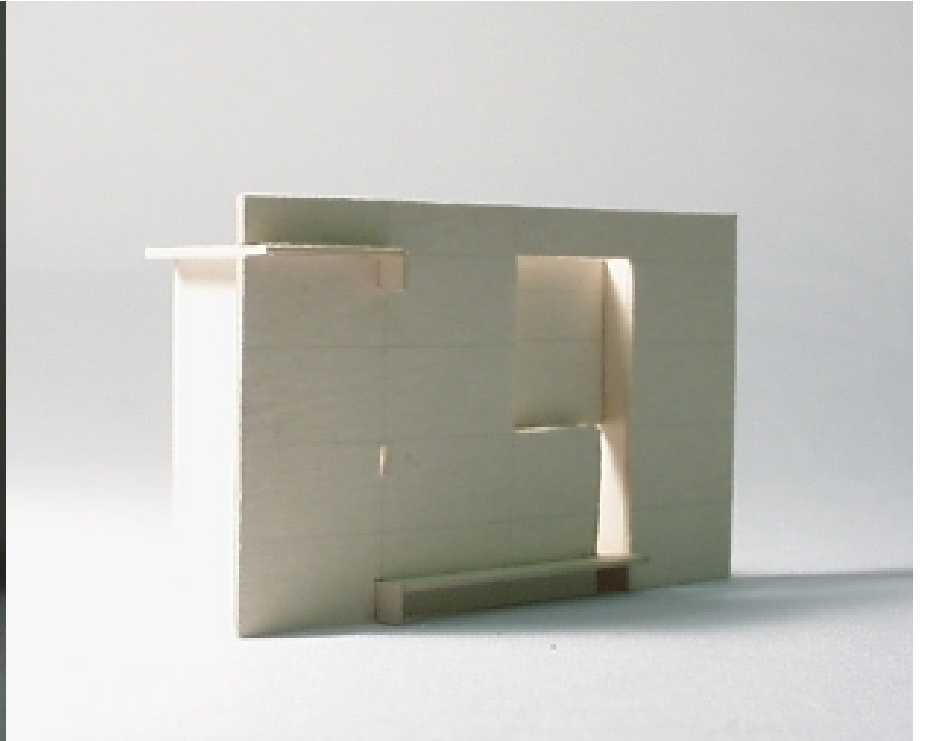
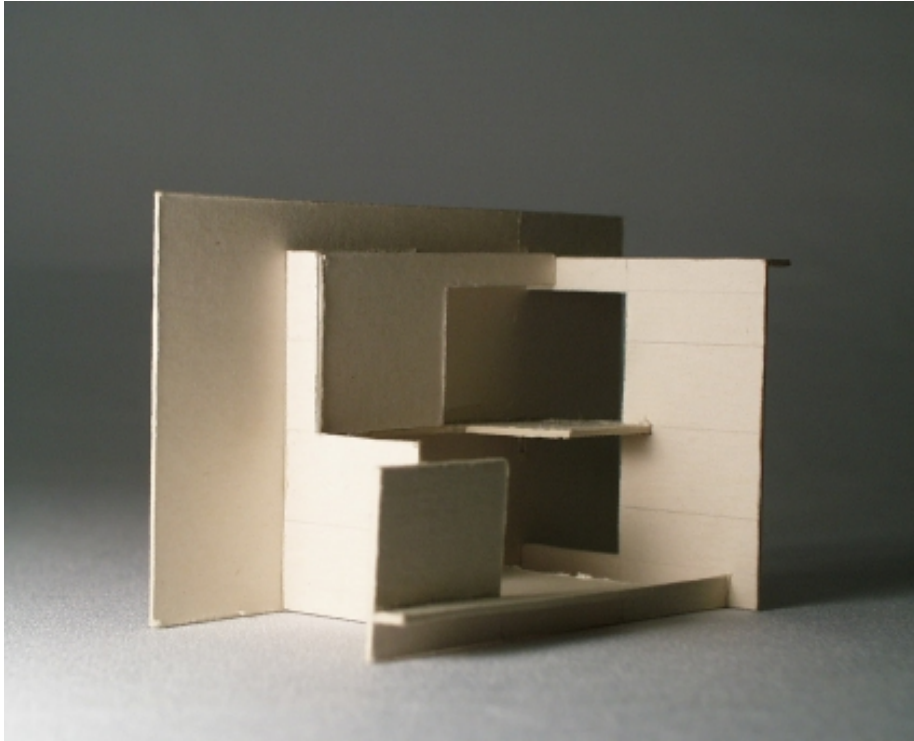
Study Models Exploration models of studio spaces. Spatial compositions of solid and void, order and variation, and the layering between inside and outside.



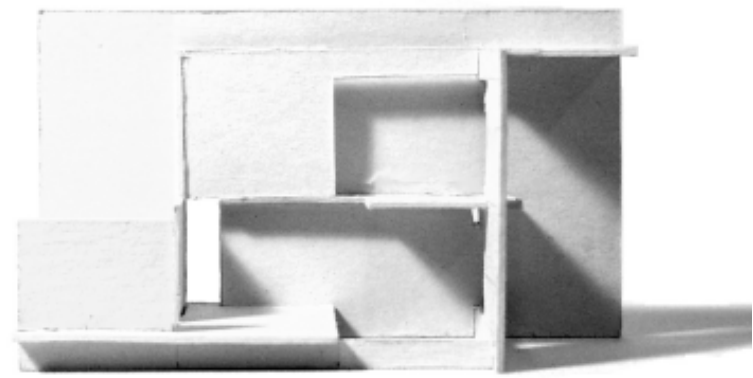
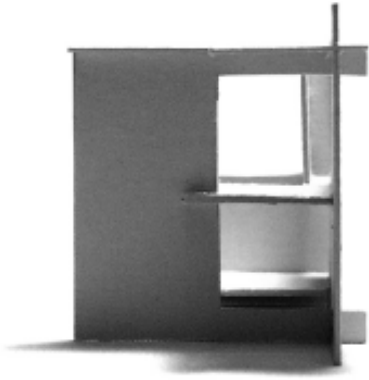


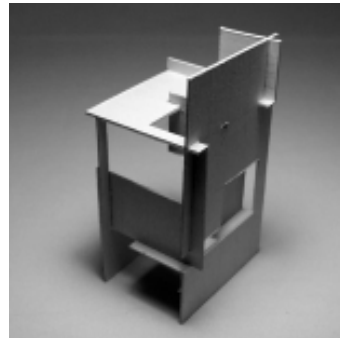
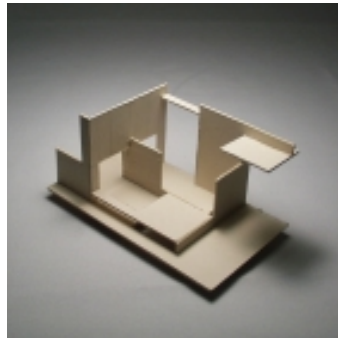
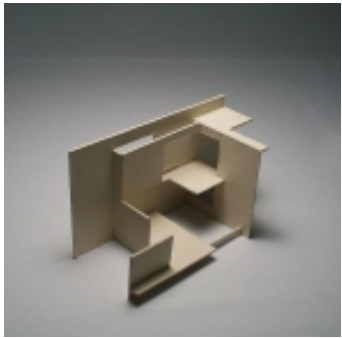
re-viewing solid and void





layering between the inside and outside





order and variation

