

SCHOOL AS AN INSTITUTION

With liberative space in mind, I chose to design a high school. I think that it is important that school provides the place for intellectual and social growth by encouraging the individual actions in an liberative space.

A high school is a place where young people, full of life and optimism, are starting their independent, individual participation in community life. It is important that the school promotes the right idea: "Thus a school building should not be a symbol of power politics nor primarily a product of technical or artistic perfection. Like any other building, a school should communicate an idea of a way of life sympathetic to the universal principle of democracy."⁵

The school building should be a special and rich experience. "Thus architecture is also capable of showing that which is not actually visible, and of eliciting associations you were not aware of before. If we succeed in producing architecture that is so layered that the diversity of realities as embedded in the different layers of consciousness are reflected in the design, then the architectural environment will moreover 'visualize' these embedded realities and will thus tell the users something about the world. "⁶

⁵ Scharoun, Hans. XII Triennale in Milan, 1960.

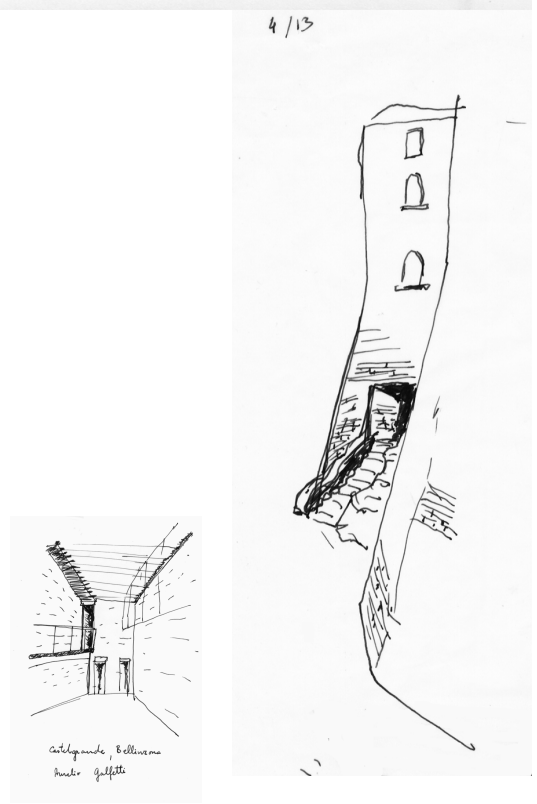
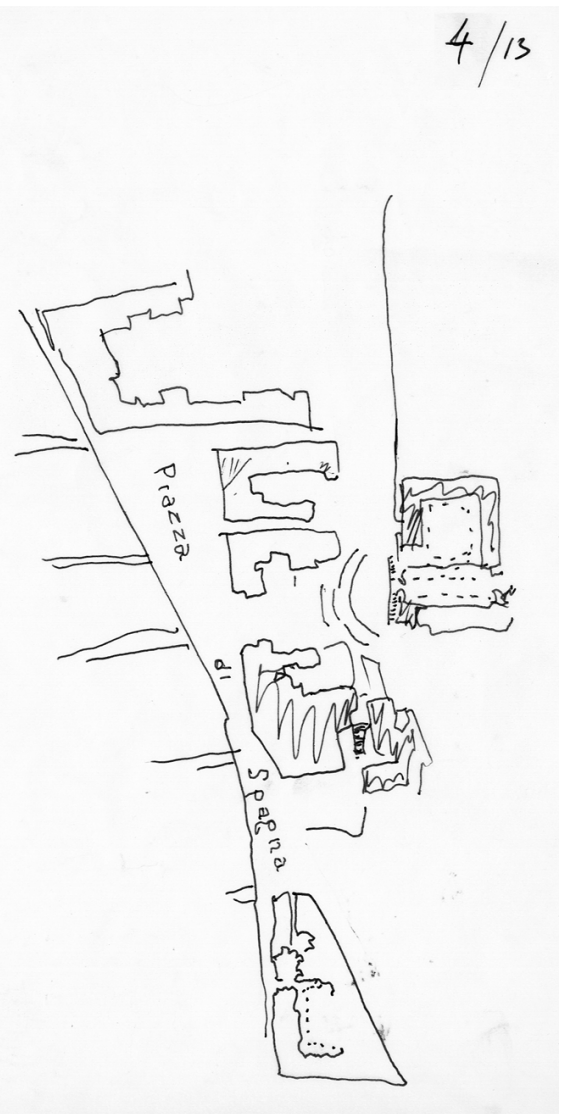
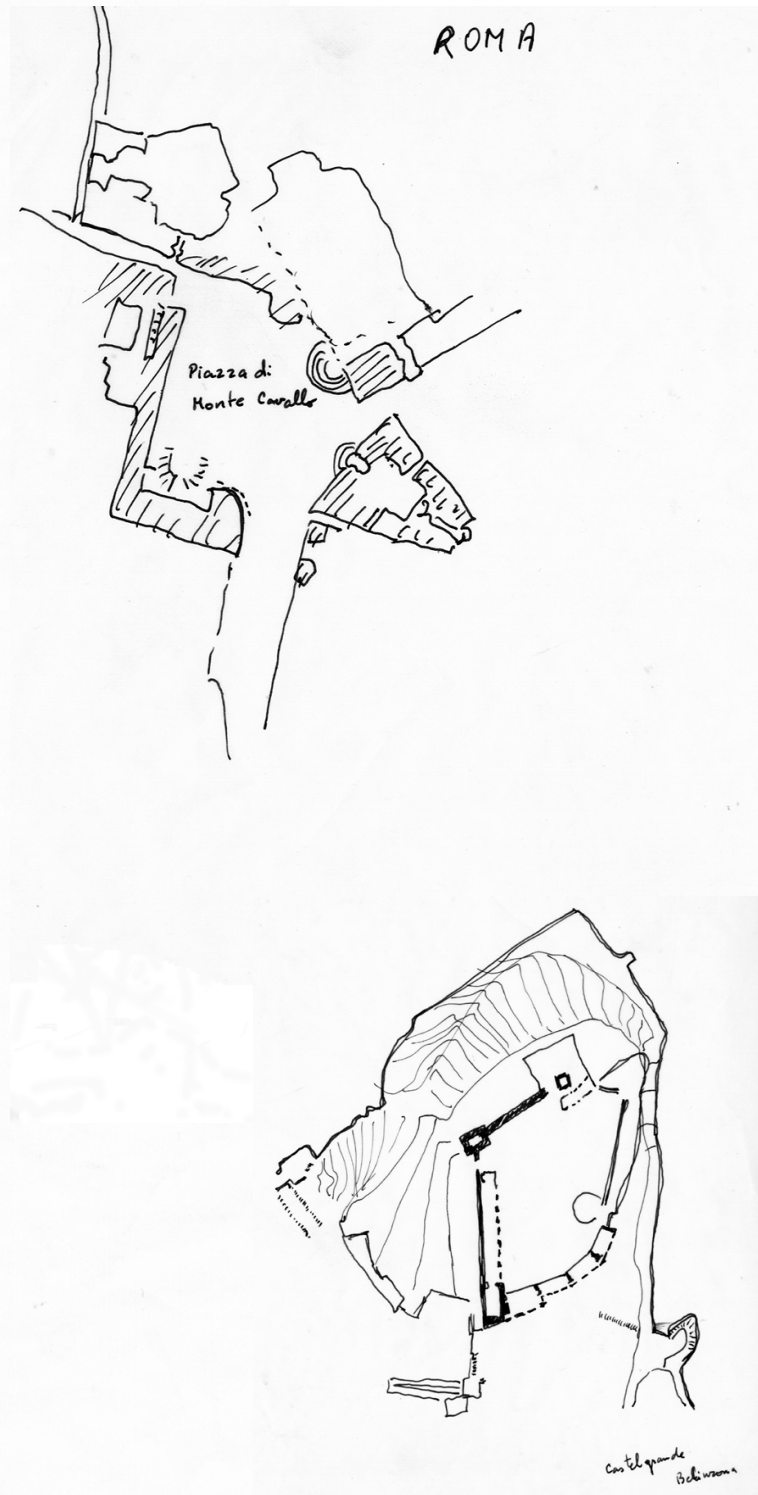
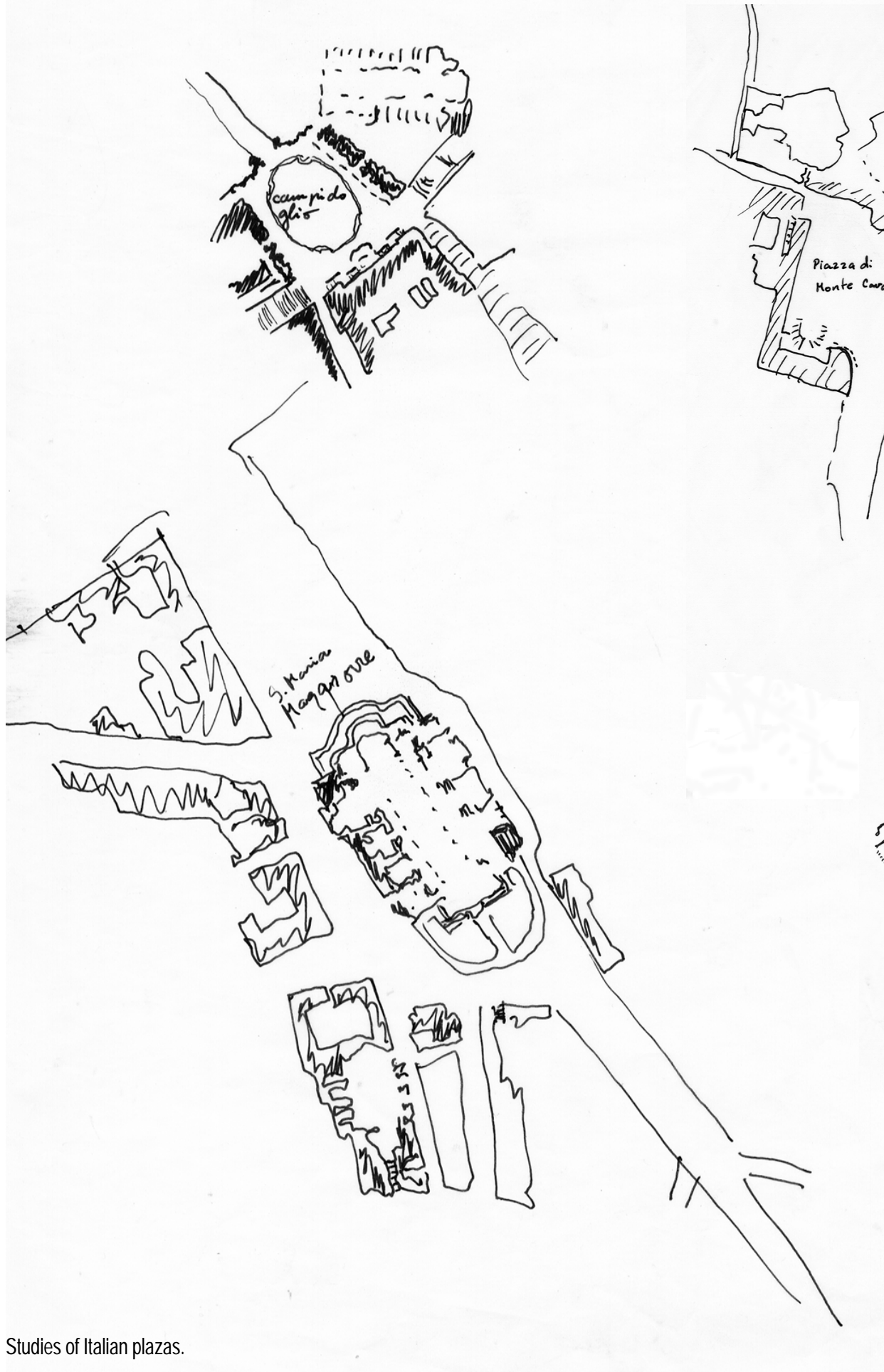
⁶ Hertzberger, Herman. Lessons for Students in Architecture, p. 230.

PLAZA

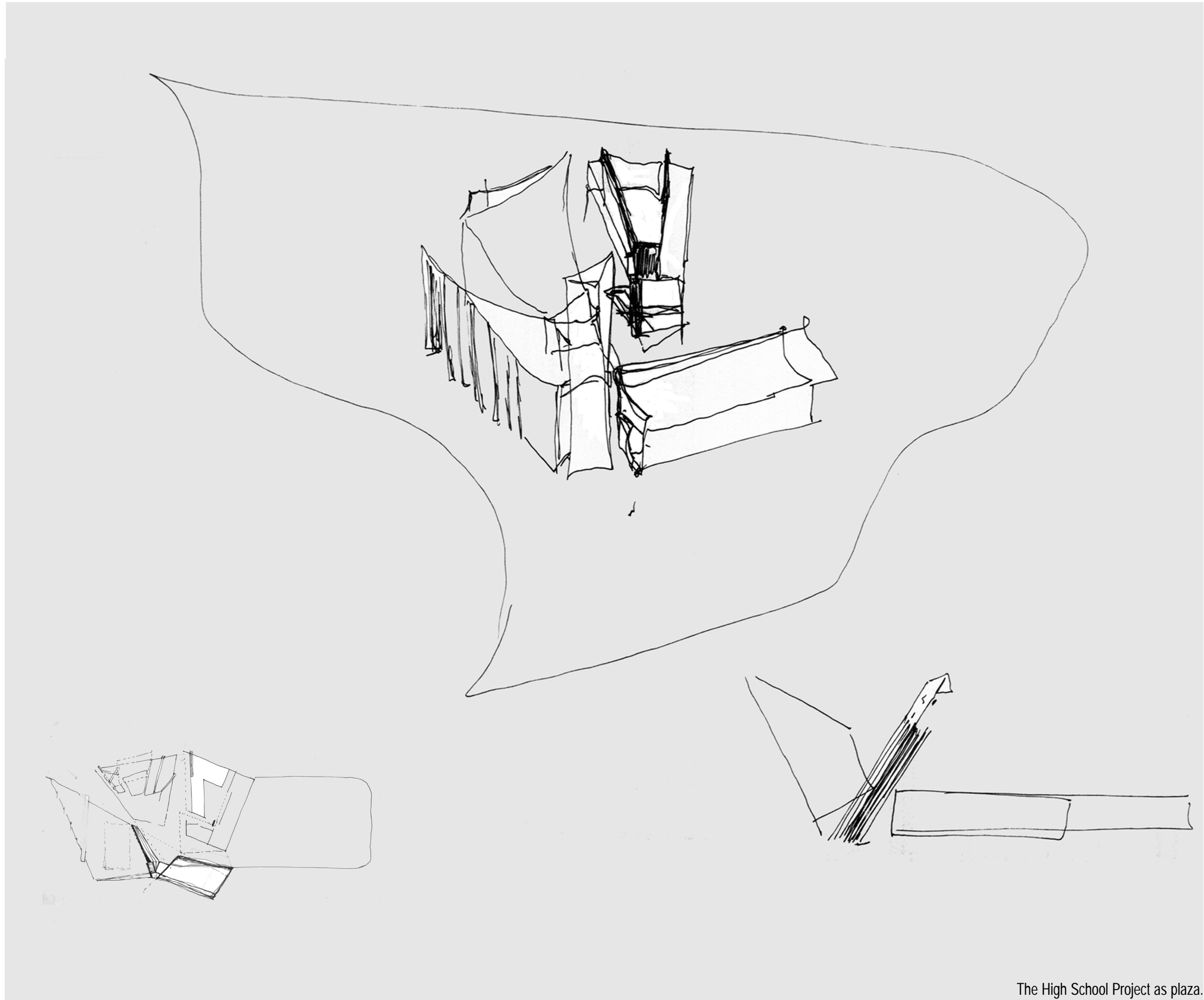
The plaza is an essential part of a community life, and therefore of The High School Project too. This is where people meet, where thoughts and feelings are exchanged, and where new ideas are born. In order to be successful the plaza has to be inhabitable by people.

People should be attracted to come to the plaza because there is the opportunity for events to happen, and because it is changing constantly: people moving, water running, birds flying, some tables put out for lunch.

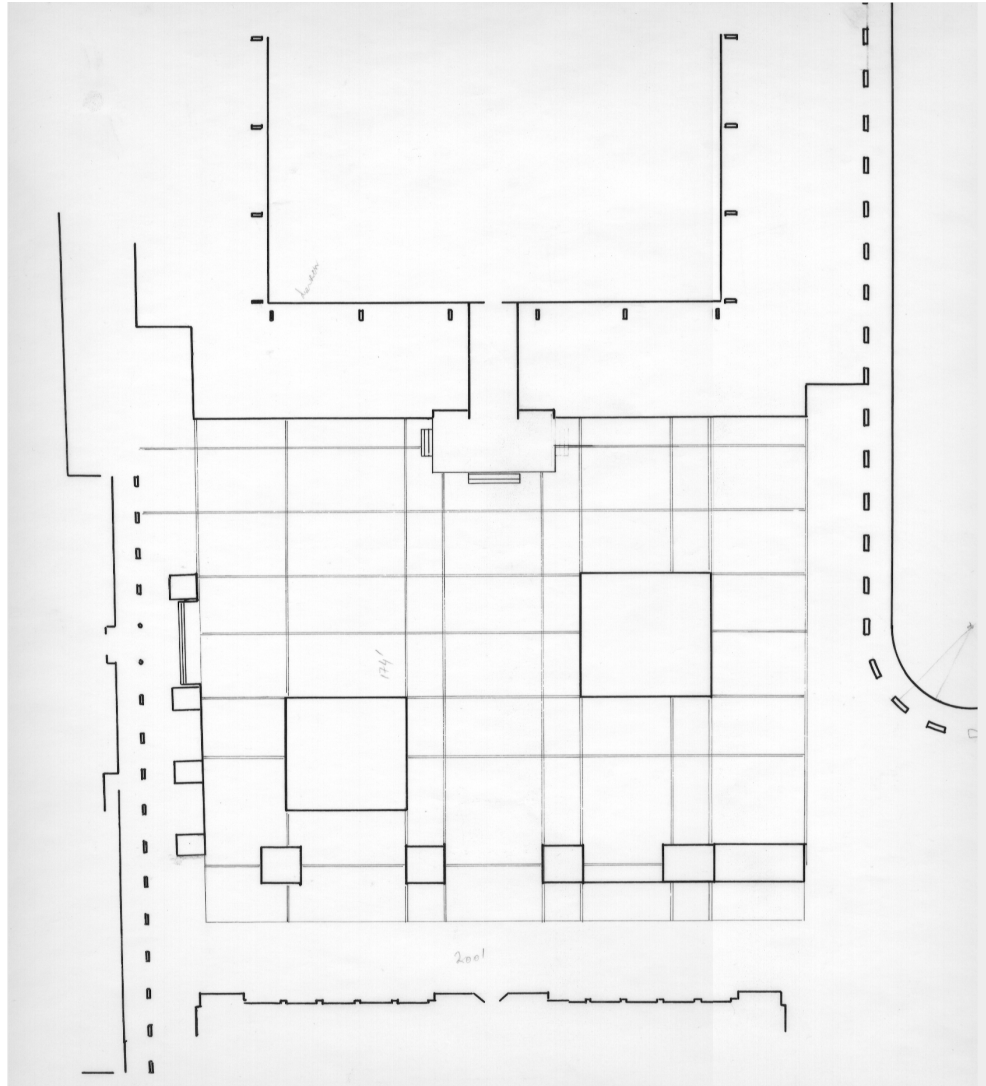
The plaza is lighter and wider than the surrounding streets and passages so it attracts people to come. It needs to be of the right size, enclosure, and material.



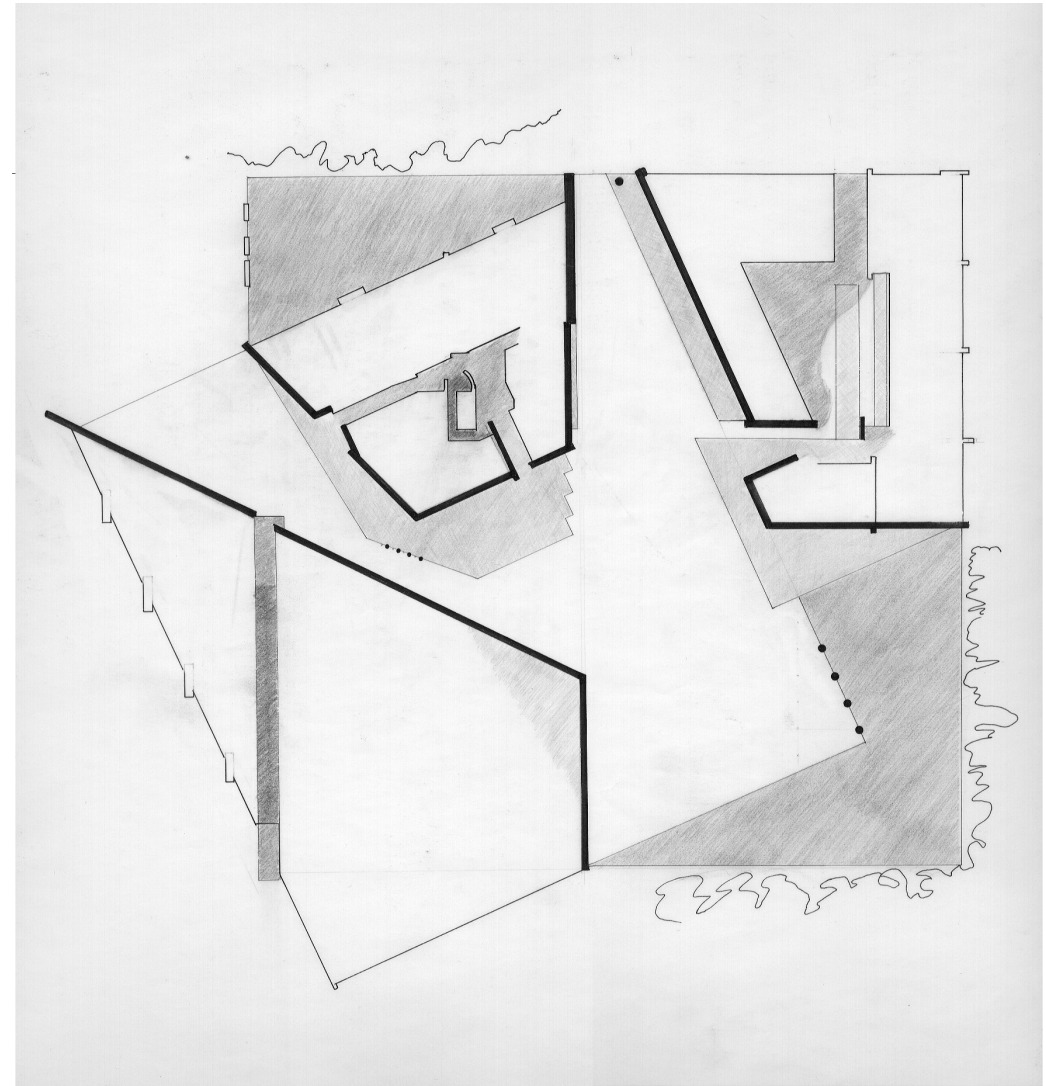
Studies of Italian plazas.



The High School Project as plaza.

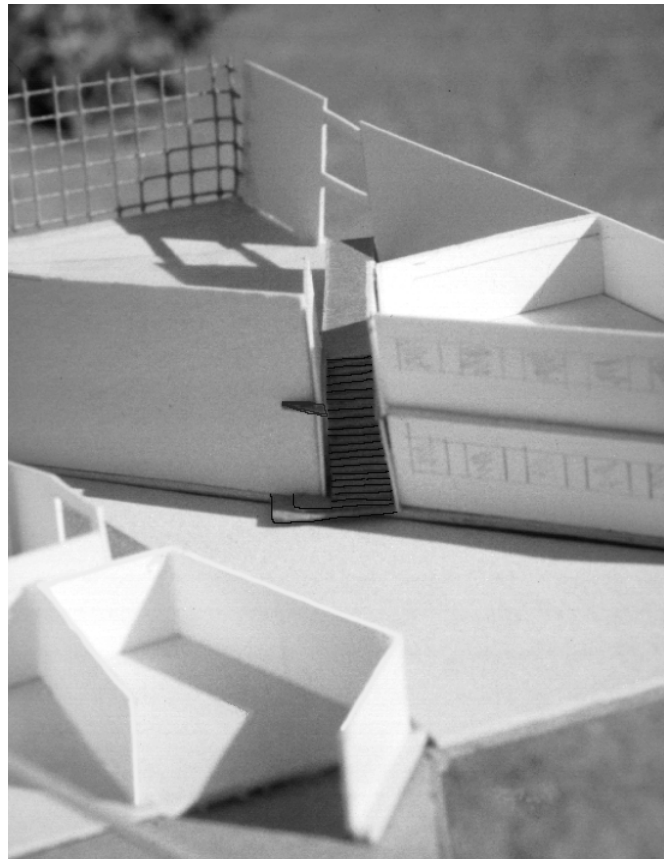


Cowgil Plaza, Blacksburg: plan.



The High School Project: plan.

Cowgil Plaza and The High School Project are drawn to the same scale, giving the sense of the project size.



Model of The High School Project exploring different elements of a good plaza: approaches, subordinate plazas and narrow passages.

