

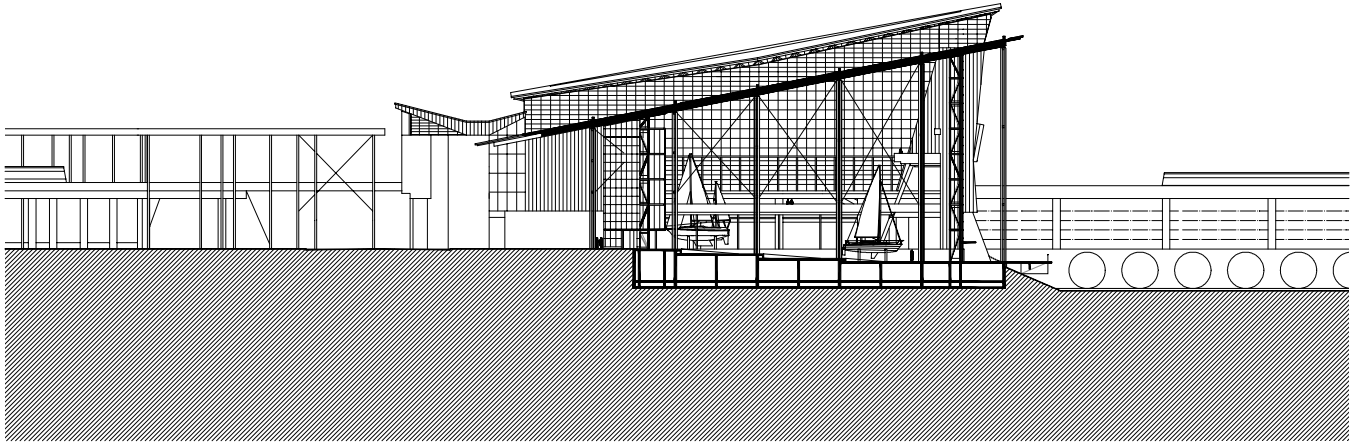
Section through the hotel 1:1,200



Louvered roof and guest room



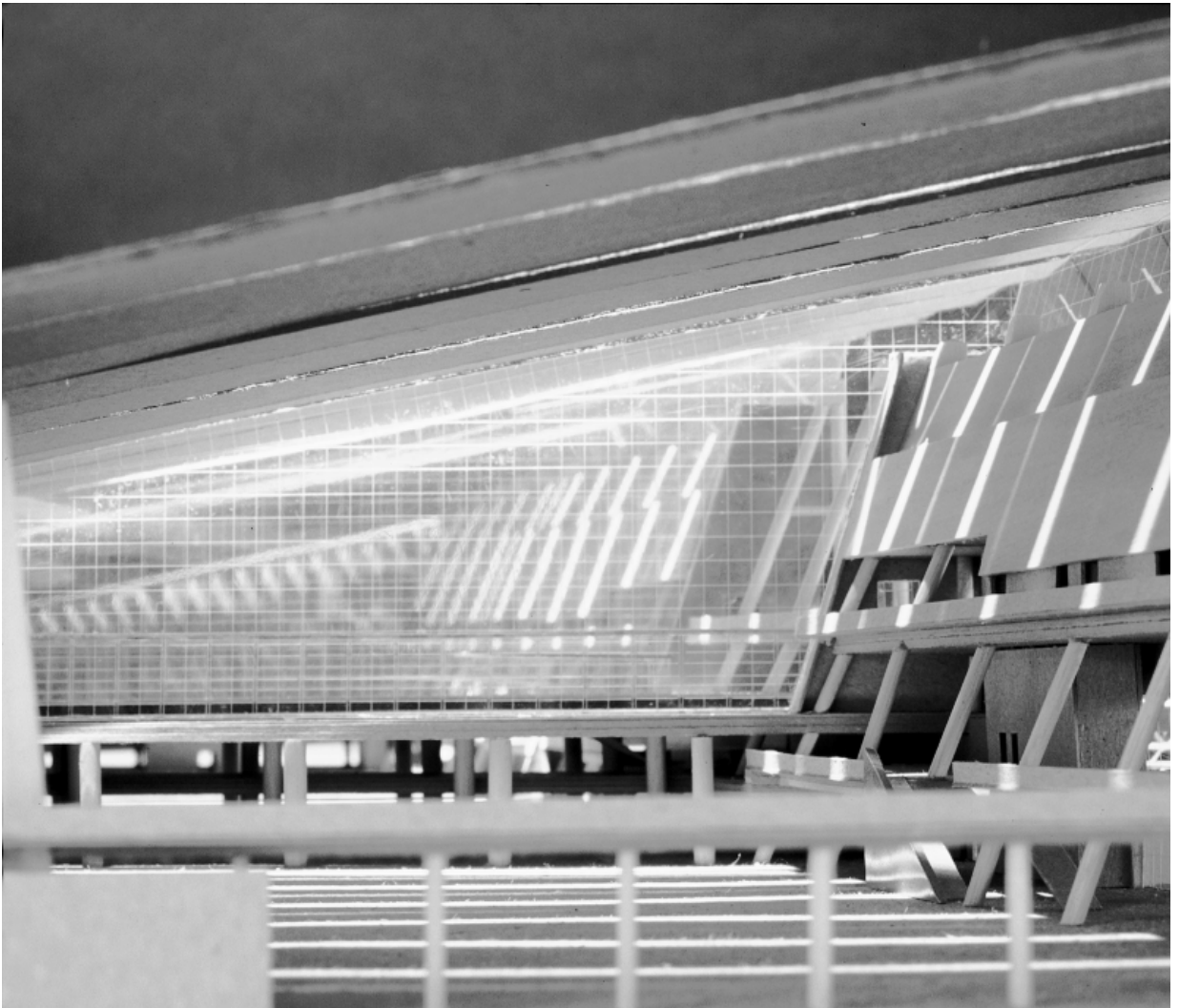
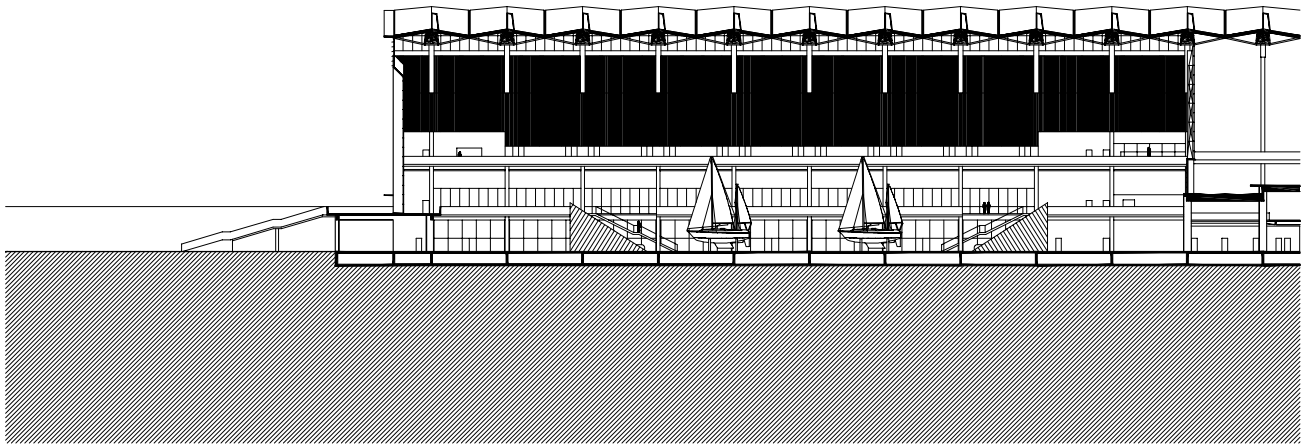
The guest rooms are located above the loading zone. The loading zone is to show the preparation of the event to the public.

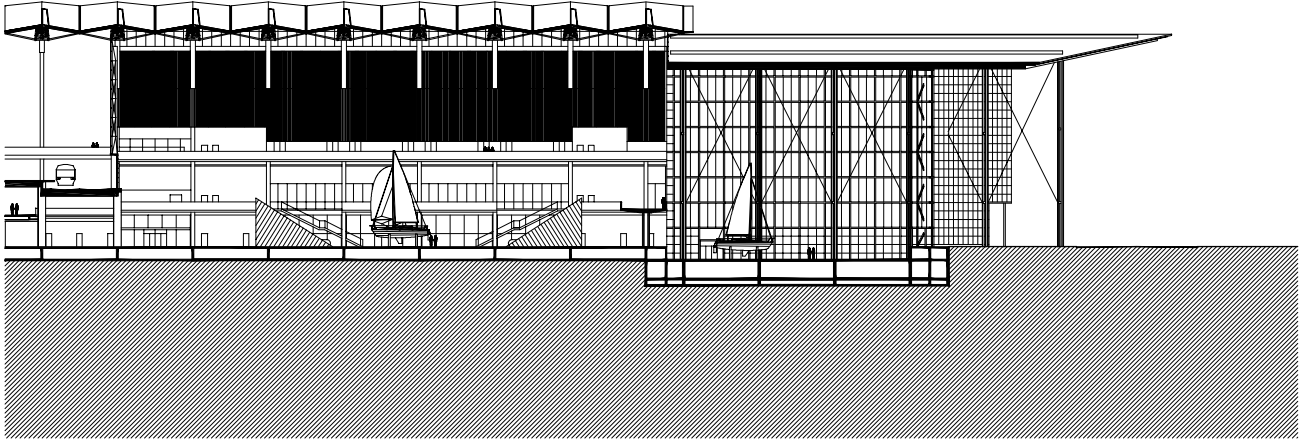


Section through the exhibition hall C 1:1,200

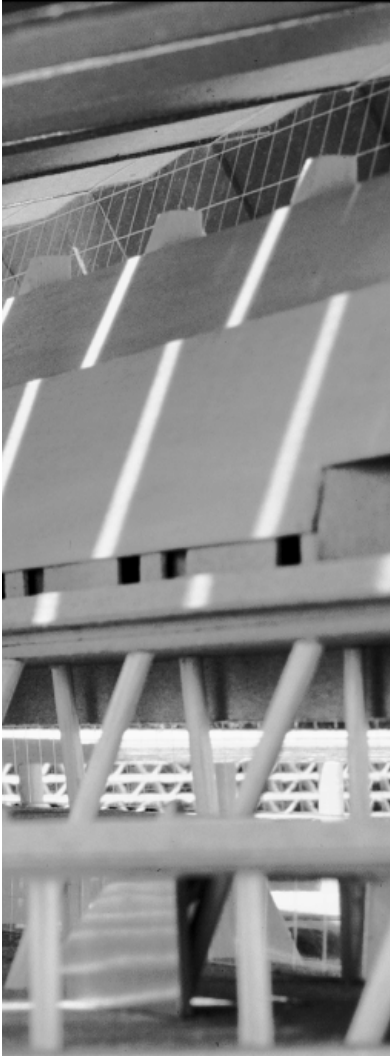
View seen from the exhibition hall C. Cameron run is seen beyond the esplanade.



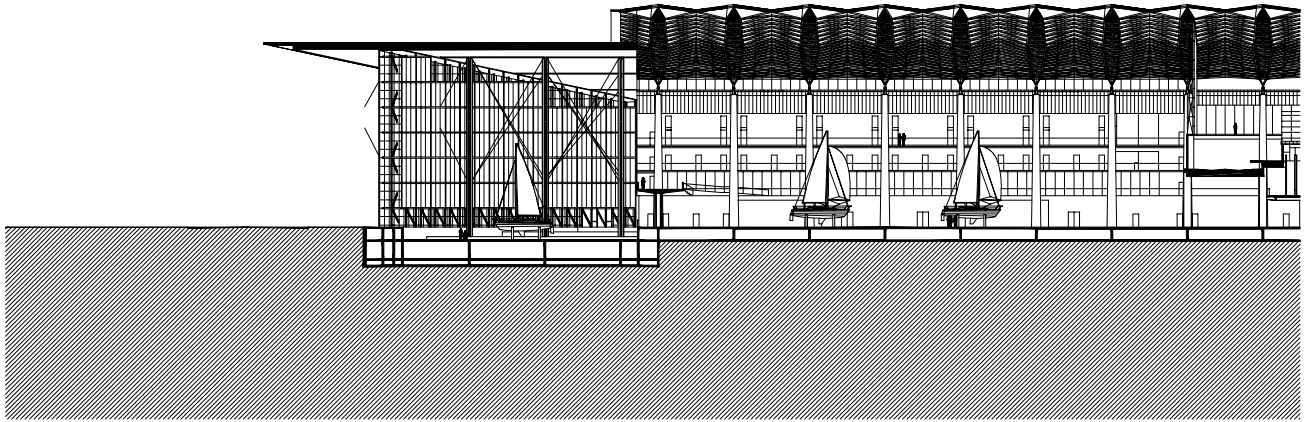




Section looking to the north 1:1,200



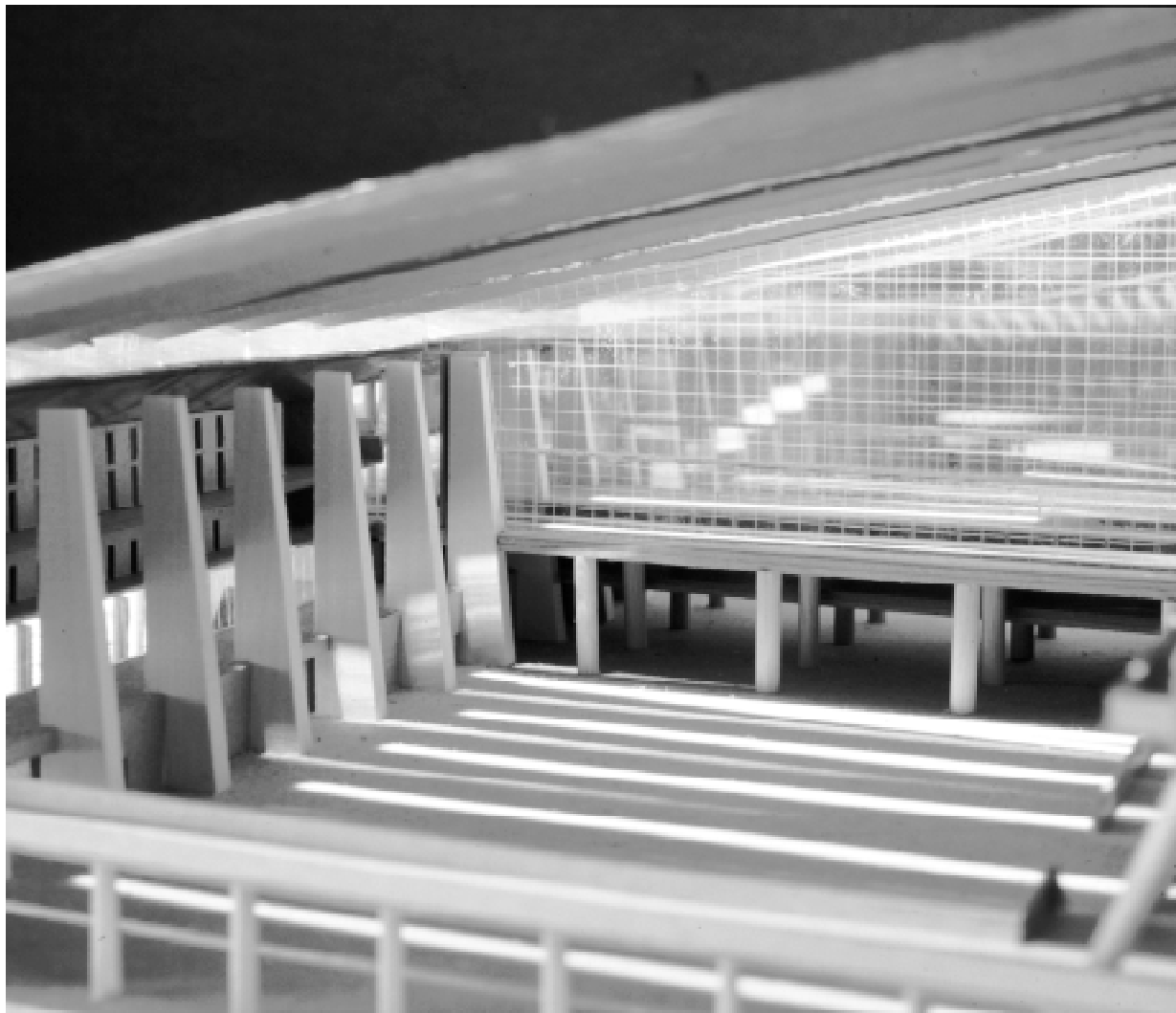
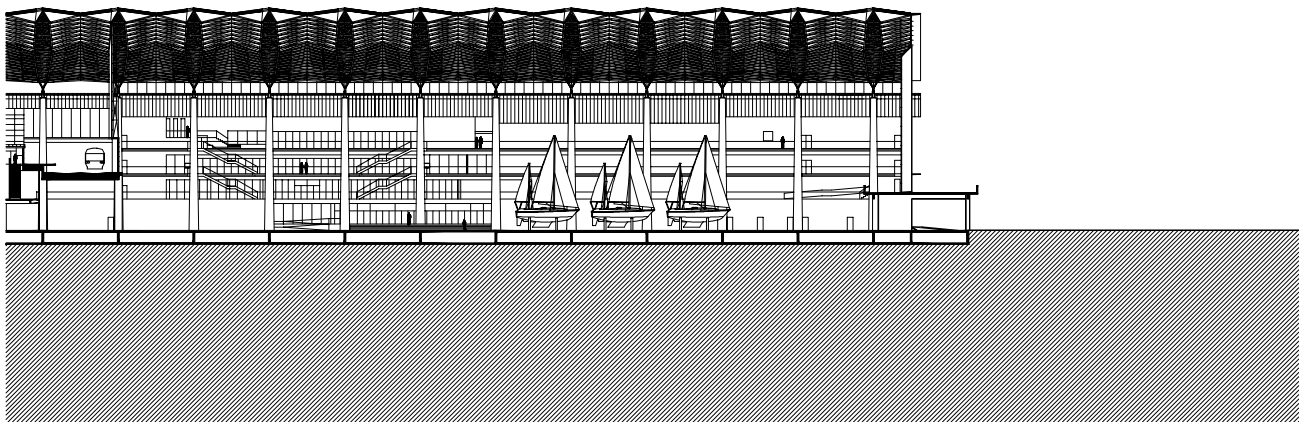
Interior overview on the river side

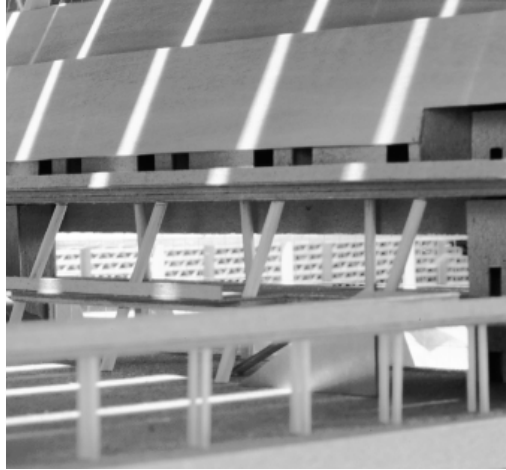
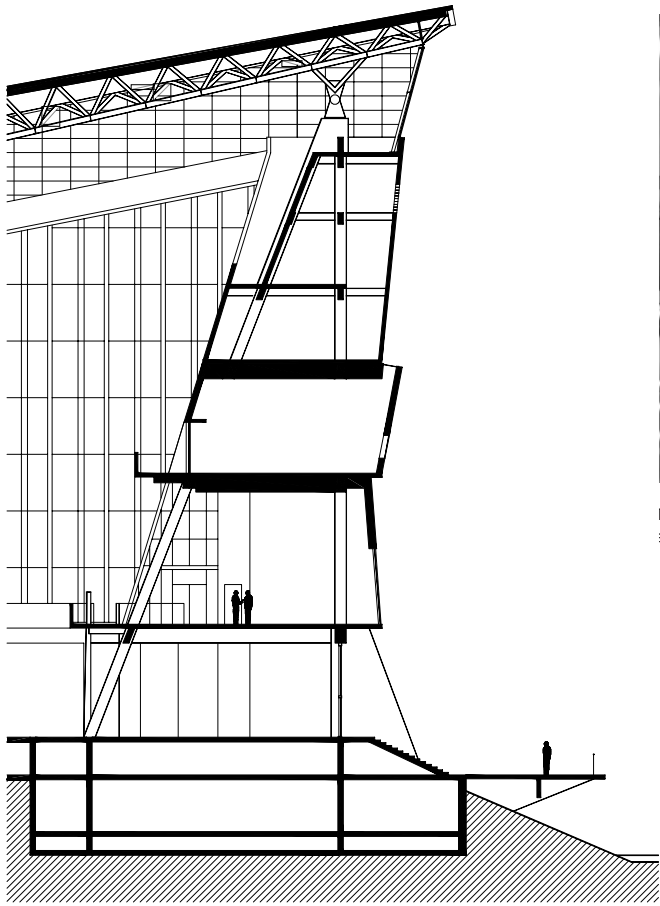


Section looking to the south 1:1,200



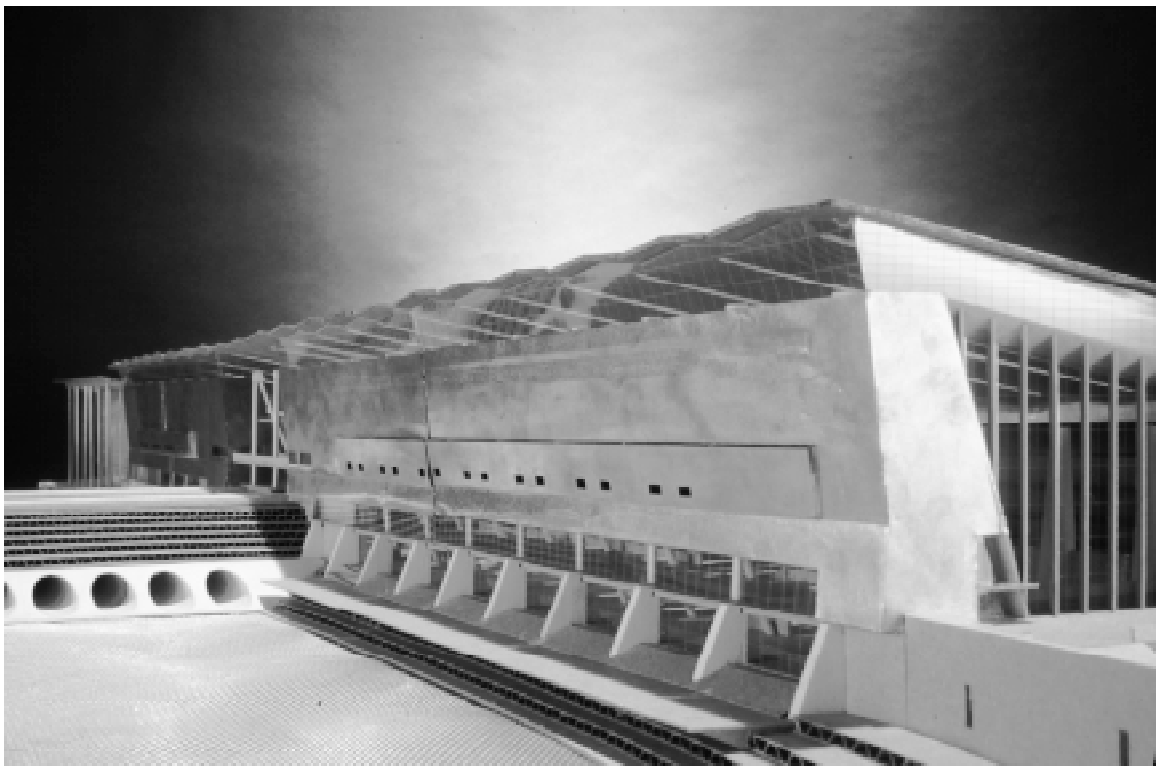
Interior overview on the park side. The hallway to the guest rooms functions as a balcony. This provides another vantage point participating to make a festive place.

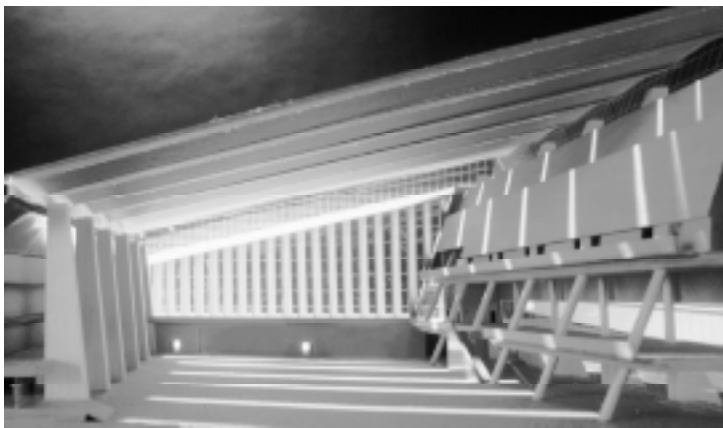




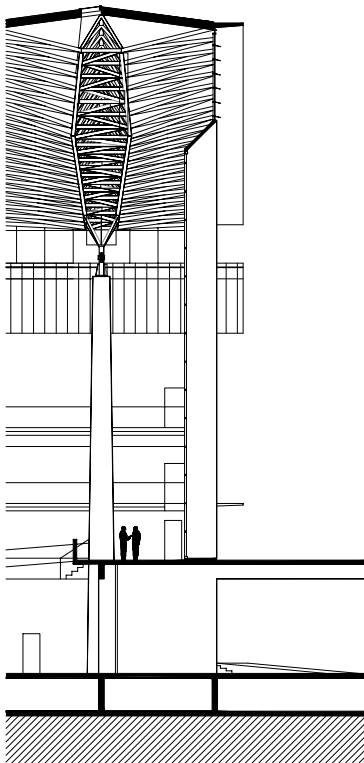
The meeting rooms and the mechanical rooms are stacked above the asplanade. This opens view to the outside.

River side wing 1:40



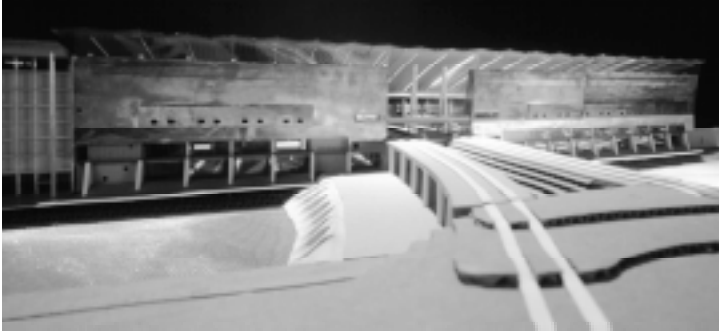


Study of Brise-soleil:
(above) with southern sun
(below) with western sun

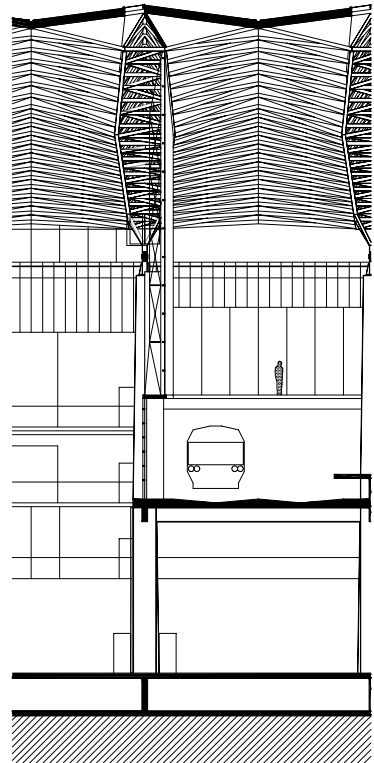


West side wall, 'Brise-soleil' 1:40



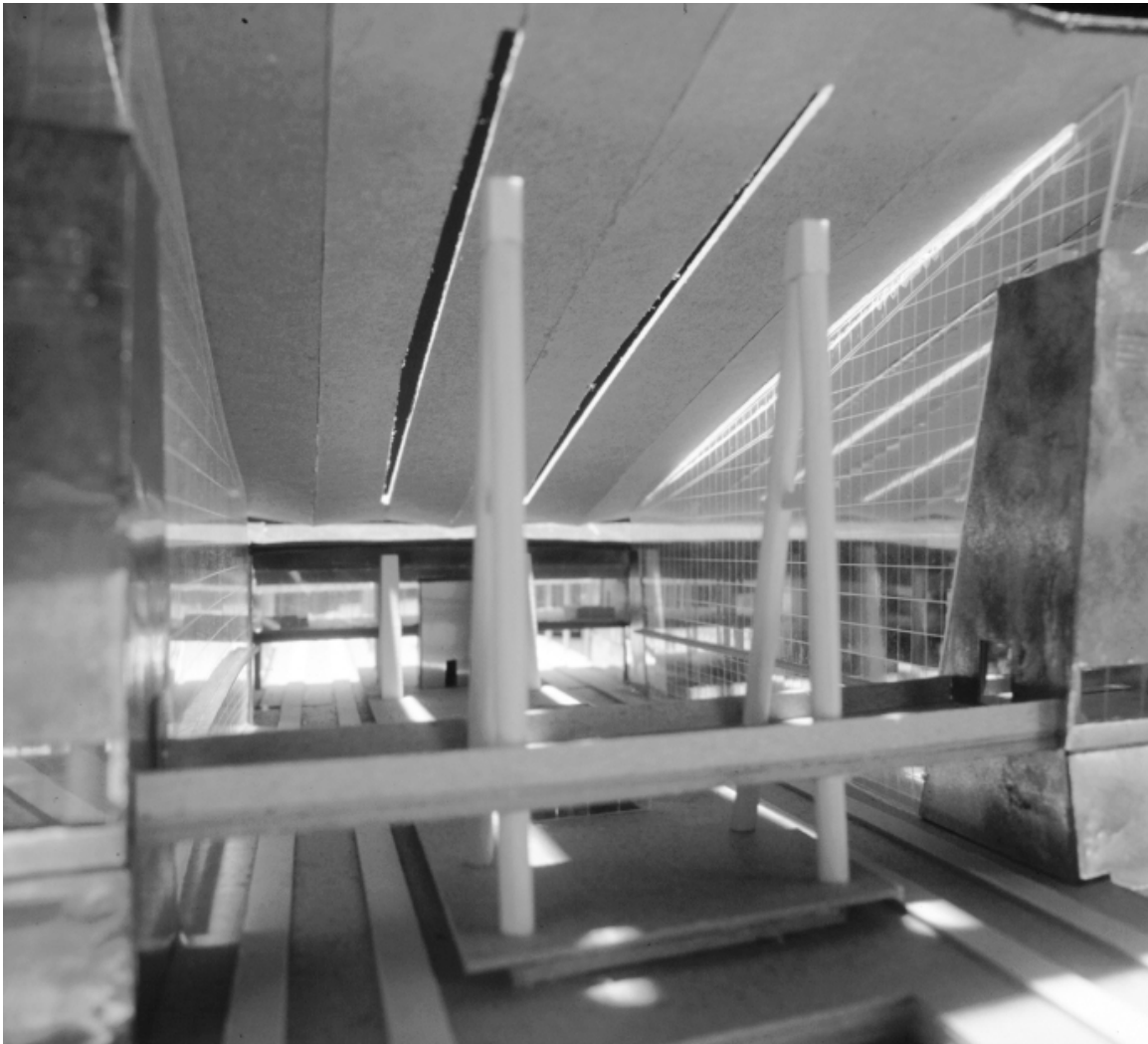


The glass curtain wall provides a preview of the event to the people on the train. Direct visual connection is intended.



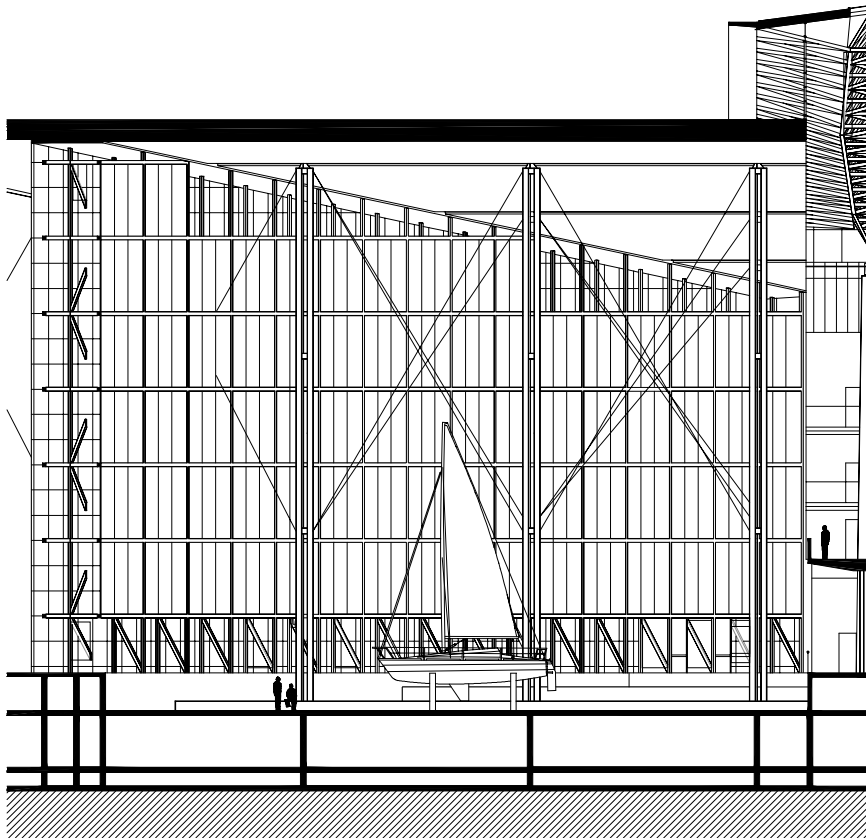
Metro platform side wall 1:40





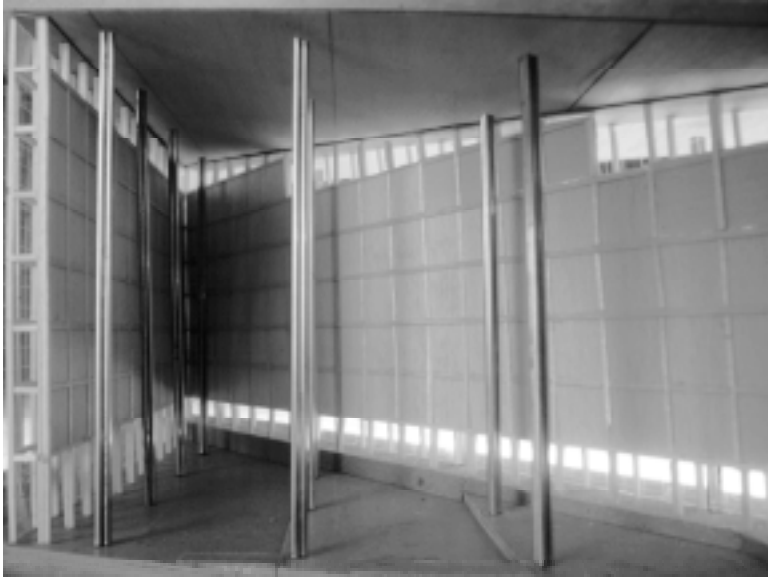


When closing all the wood panels, natural light comes from only by the ceiling and the floor.

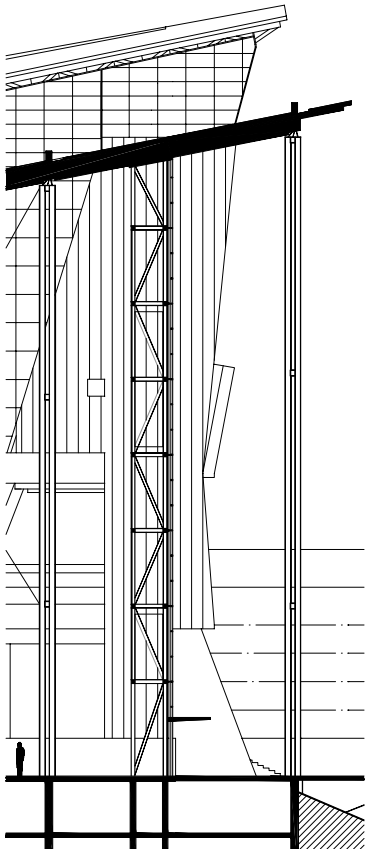


Exhibition hall C 1:40





Detail of the corner where two screens meet each other



Latticed screen wall 1:40



