

Appendix A

Test Images

The 14 test images used in this thesis are displayed here for reference. These include 10 natural images — Barbara, Boat, Finger, Goldhill, House, Lena, Lighthouse, Mandrill, Nitf7 and Peppers and 4 rendered image — Gray21, Satellite, Ruler and Yogi. The following list of sources indicates the origin of the test images used. Electronic versions may be found at the locations given in Table A.1.

1. MATLAB Image Processing Toolbox
2. Image Compression Lab, UCLA School of Engineering and Applied Sciences
(http://www.icsl.ucla.edu/~ipl/psnr_images.html)
3. Waterloo BragZone
(<http://links.uwaterloo.ca/bragzone.base.html>)
4. Information Coding Laboratory, UCSD ECE Department
(http://www.code.ucsd.edu/~sherwood/image_examples/chan_coded/chan_coded.html)
5. Home page of François Meyer
(<http://noodle.med.yale.edu/~meyer/profile.html>)

6. Signal and Image Processing Institute, USC

(<http://sipi.usc.edu/services/database/Database.html>)

7. UICODER

(<http://saigon.ece.wisc.edu/~waveweb/QMF/software.html>)

Table A.1: Listing of test images.

Name	Size	Source ¹	Notes
Barbara	512 × 512	2	
Boat	512 × 512	3	
Finger	512 × 512	5	
Goldhill	512 × 512	2	
Gray21	512 × 512	6	original was named gray21.512.tiff
House	512 × 512	5	
Lena	512 × 512	2	
Lighthouse	512 × 512	5	
Mandrill	512 × 512	4	
Nitf7	512 × 512	7	
Peppers	512 × 512	3	
Ruler	512 × 512	6	original was named ruler.512.tiff
Satellite	512 × 512	7	
Yogi	512 × 512	7	

¹The numbers in the "Source" column indicate the corresponding entry in the list on the previous page.



Figure A.3: Finger.



Figure A.4: House.



Figure A.5: Lena.



Figure A.6: Lighthouse.

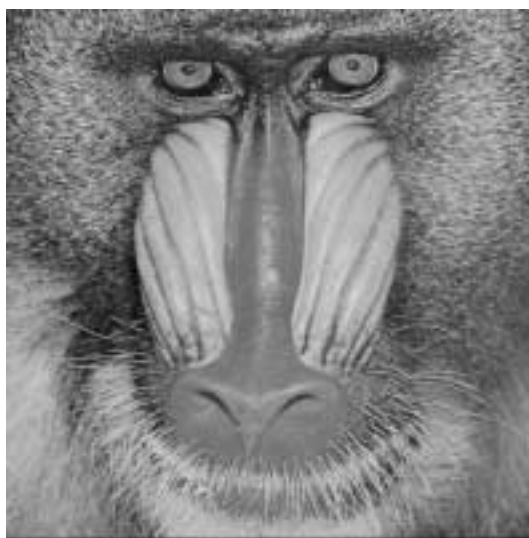


Figure A.7: Mandrill.

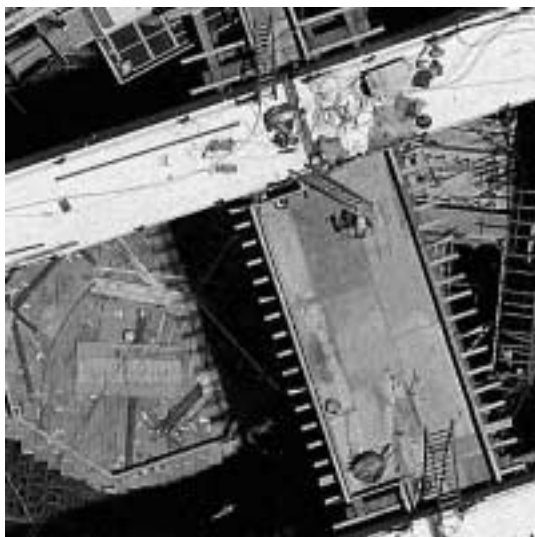


Figure A.8: Nitf7.



Figure A.9: Peppers.

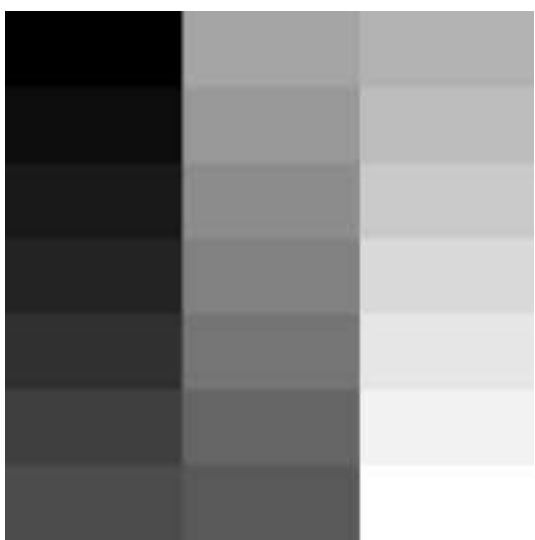


Figure A.10: Gray21.

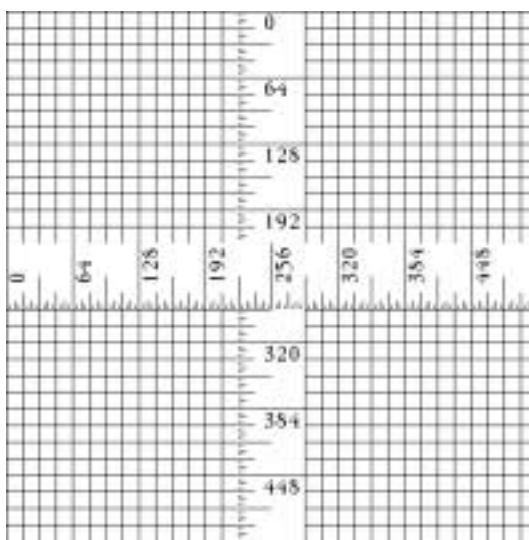


Figure A.11: Ruler.

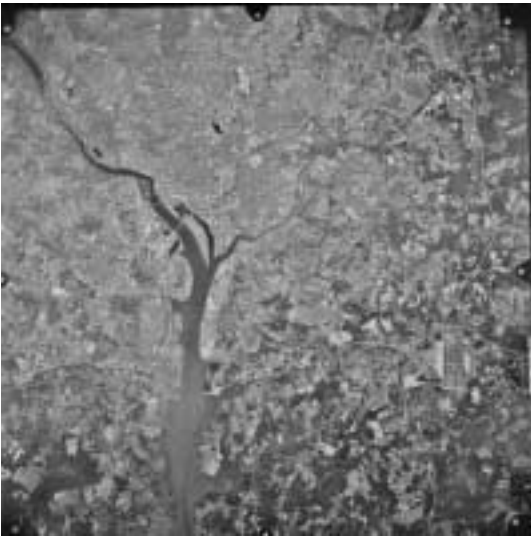


Figure A.12: Satellite.



Figure A.13: Yogi.