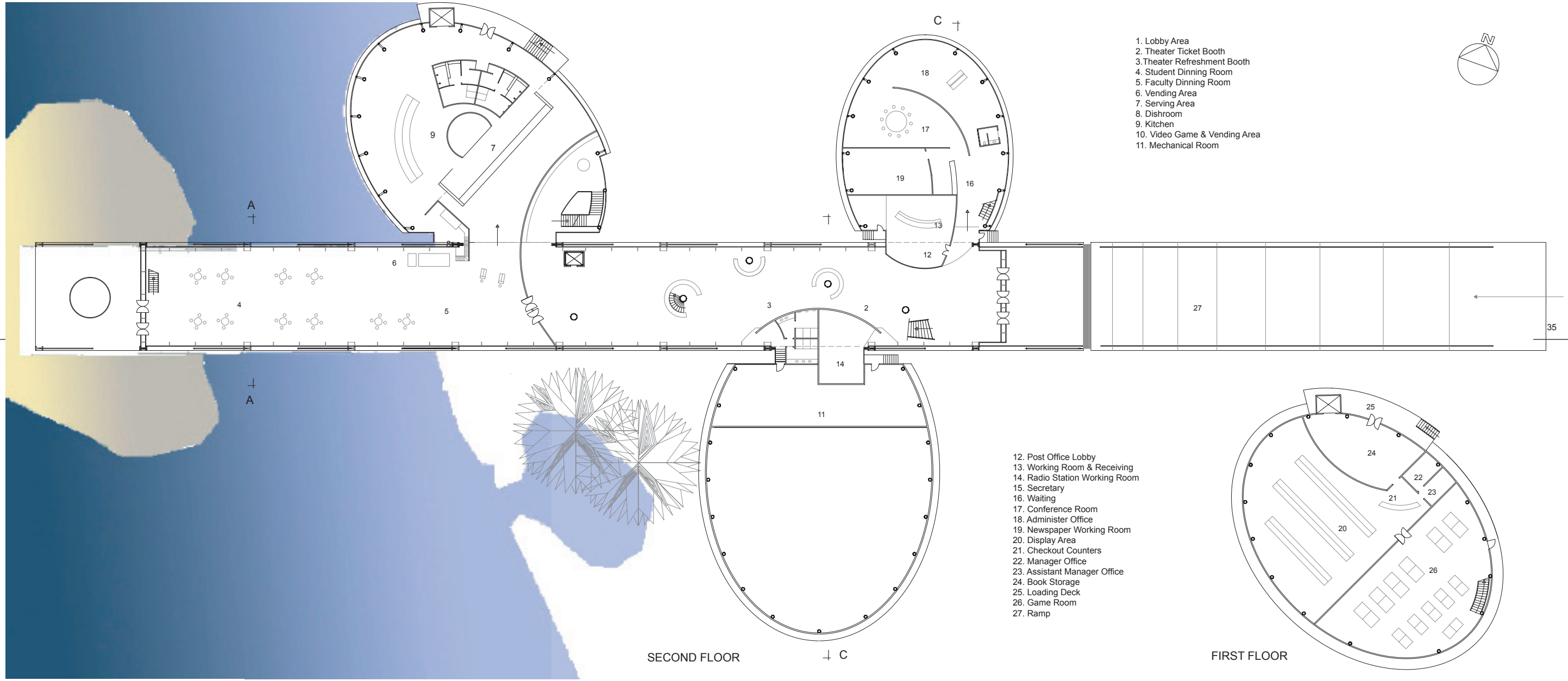


Spatial Progression

On the way to water, developing a space-in-motion is the third approach. In this spatial progression, every transition-- from earth to the bridge, from the dark to the light, from the bridge to the elliptical volumes containing the building's secondary functions--reveals the dynamism of this spatial sequence.

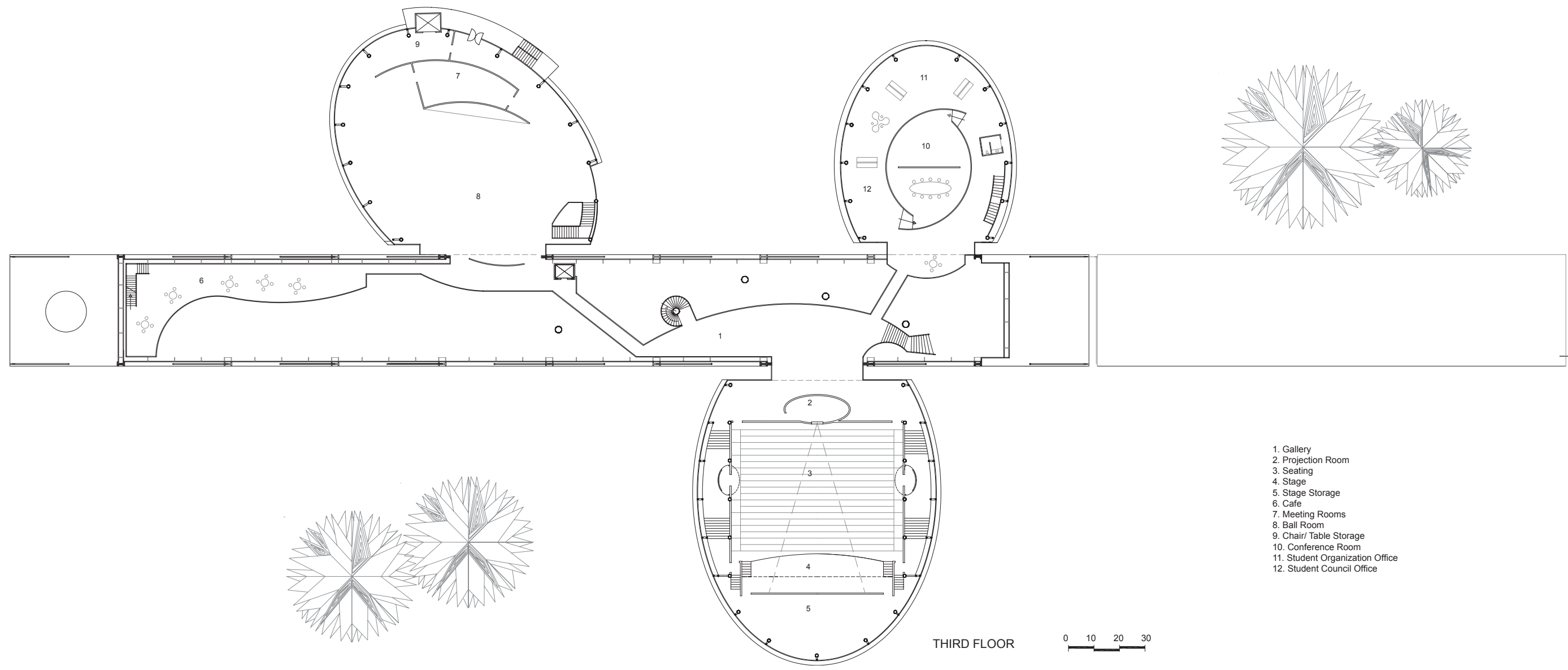


- 1. Lobby Area
- 2. Theater Ticket Booth
- 3. Theater Refreshment Booth
- 4. Student Dining Room
- 5. Faculty Dining Room
- 6. Vending Area
- 7. Serving Area
- 8. Dishroom
- 9. Kitchen
- 10. Video Game & Vending Area
- 11. Mechanical Room

- 12. Post Office Lobby
- 13. Working Room & Receiving
- 14. Radio Station Working Room
- 15. Secretary
- 16. Waiting
- 17. Conference Room
- 18. Administer Office
- 19. Newspaper Working Room
- 20. Display Area
- 21. Checkout Counters
- 22. Manager Office
- 23. Assistant Manager Office
- 24. Book Storage
- 25. Loading Deck
- 26. Game Room
- 27. Ramp

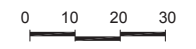
SECOND FLOOR

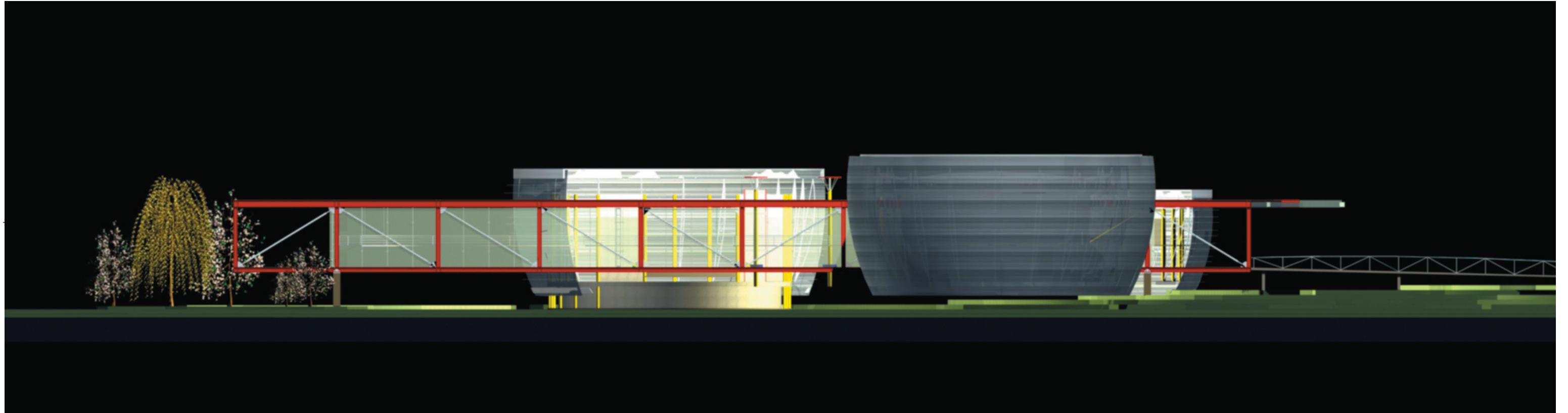
FIRST FLOOR



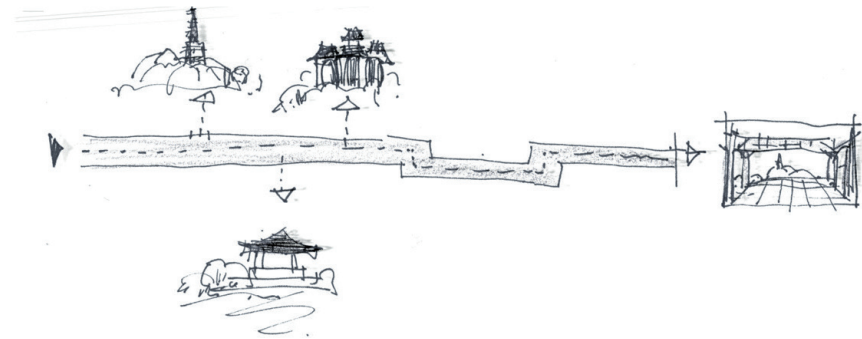
- 1. Gallery
- 2. Projection Room
- 3. Seating
- 4. Stage
- 5. Stage Storage
- 6. Cafe
- 7. Meeting Rooms
- 8. Ball Room
- 9. Chair/ Table Storage
- 10. Conference Room
- 11. Student Organization Office
- 12. Student Council Office

THIRD FLOOR





ELEVATION



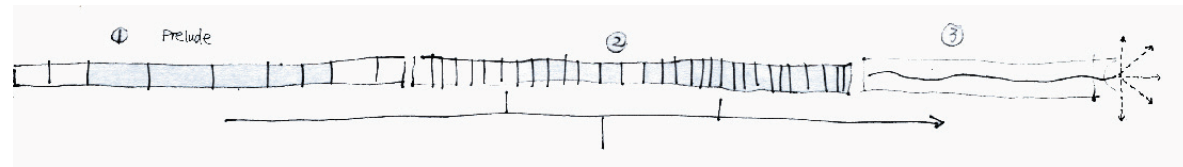
The Conceptual Analysis of Beijing Summer Palace

DESIGN CONCEPT

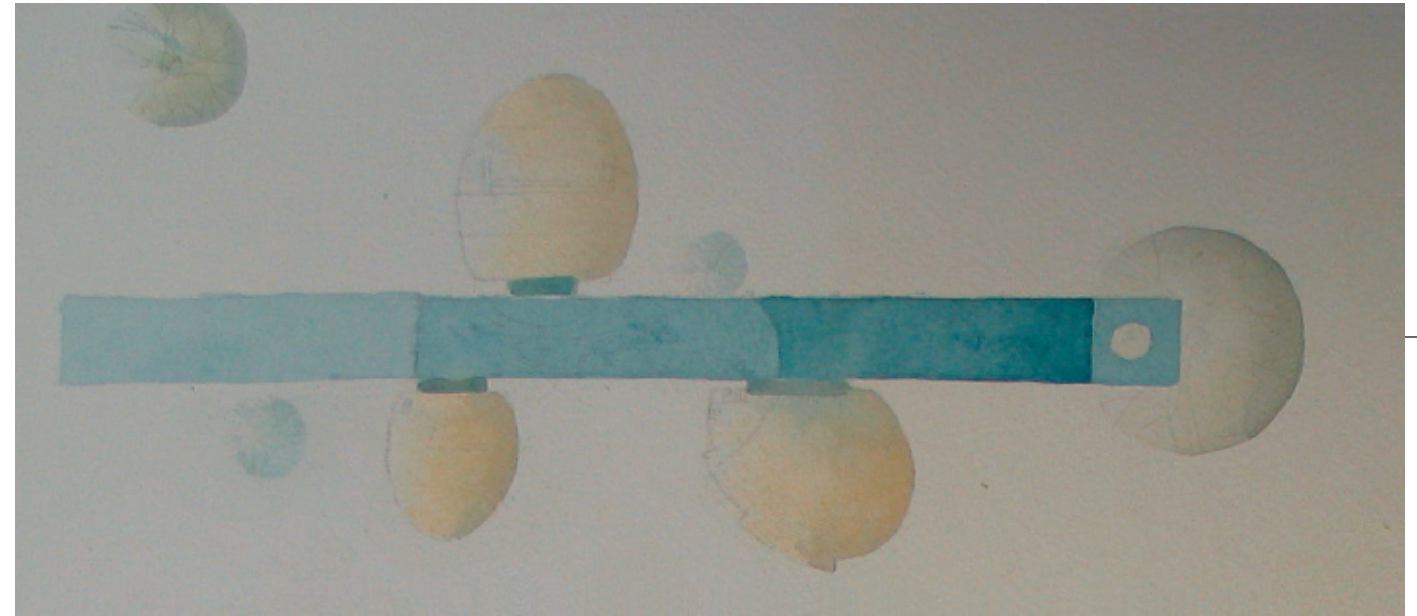
How to animate the long path is an important question. I studied the design concepts of Beijing Summer Palace for reference.

Beijing Summer Palace is widely known for its 723-meter-long corridor connecting a group of historical buildings. Many principles of the Chinese traditional garden were applied in this design. The main design concept is to create various views along the path of motion, by which the garden efficiently organizes the long path and the buildings.

During the 500-foot-long path in my thesis project, I designed three sequential spaces to create various views along the path of motion - the ramp, the lobby with volumes containing the building's secondary functions, and the dining space above water.



As a prelude, the curved ramp welcomes people to visit this place.

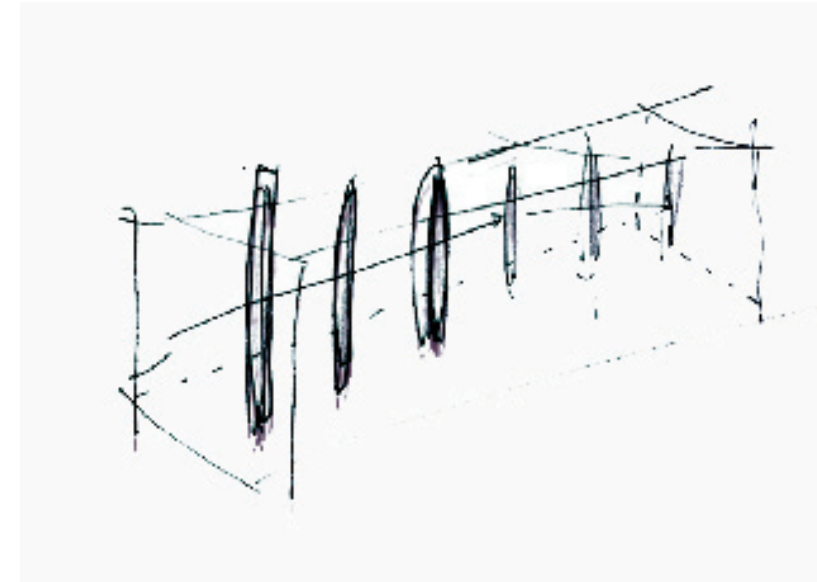


Study of Sequence

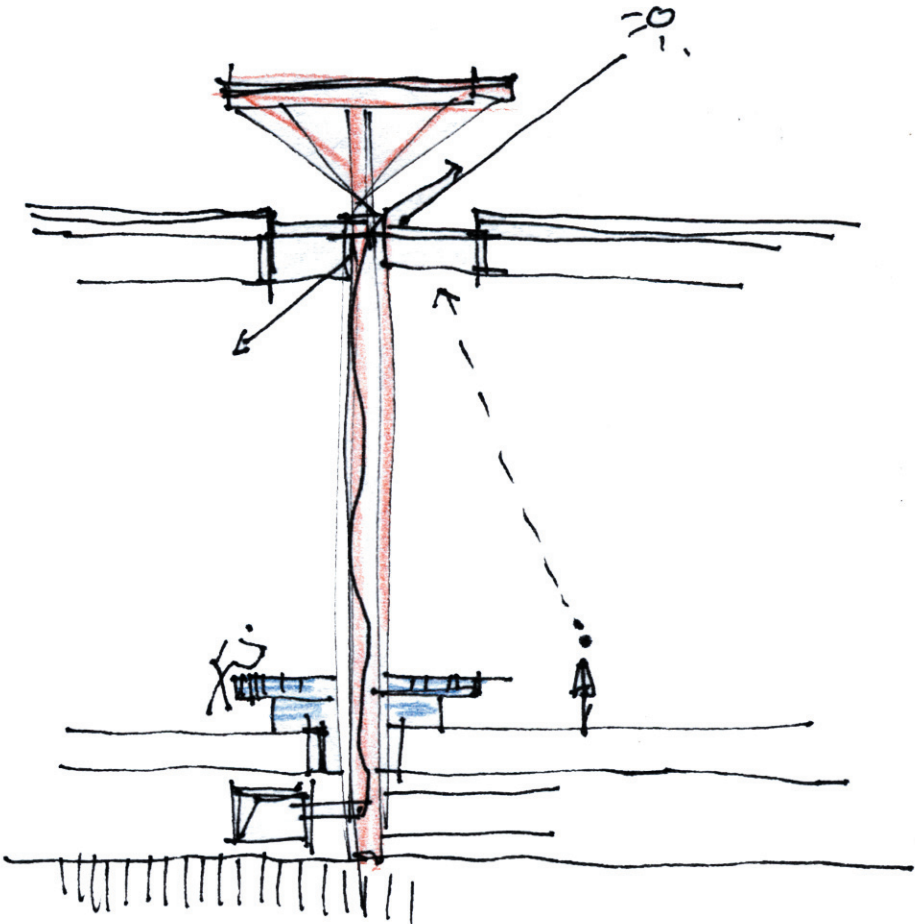


The lobby is the second space in the sequence. The spatial stairs, steel umbrellas and two small bridges animate the big space.

The steel columns combine a curved line in the lobby; people walking through can feel the permeable space.



The hollow columns have two functions: Inside the column are spaces for utilities; The hollow interior also brings the sunlight into the space.

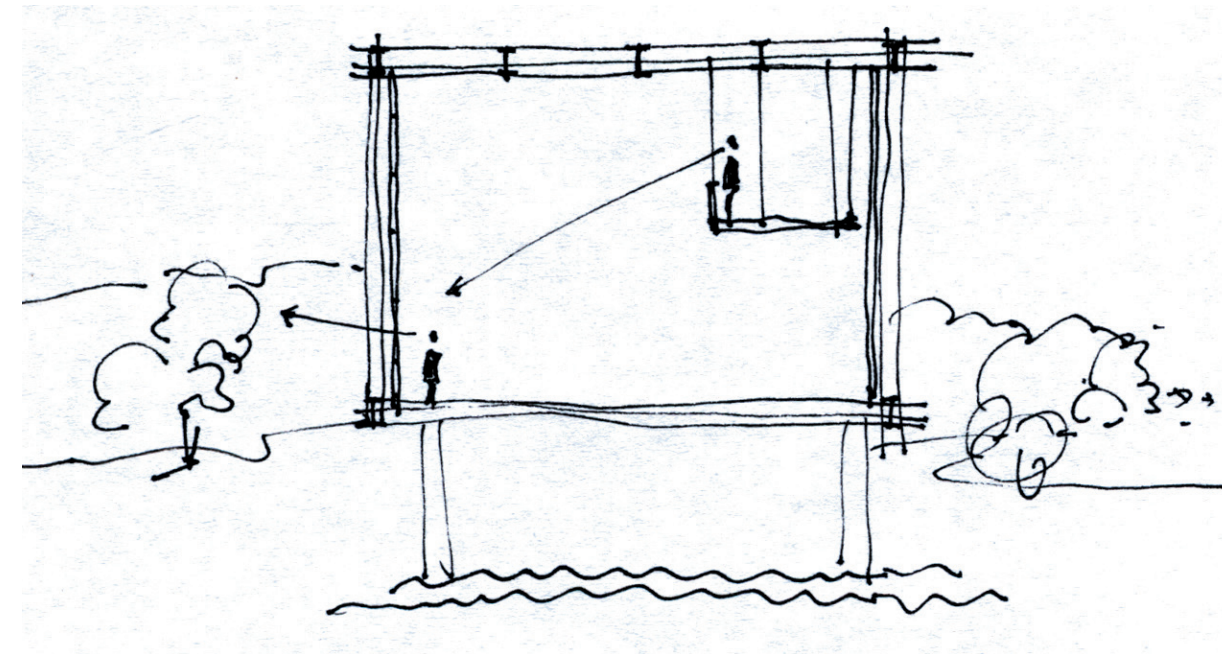


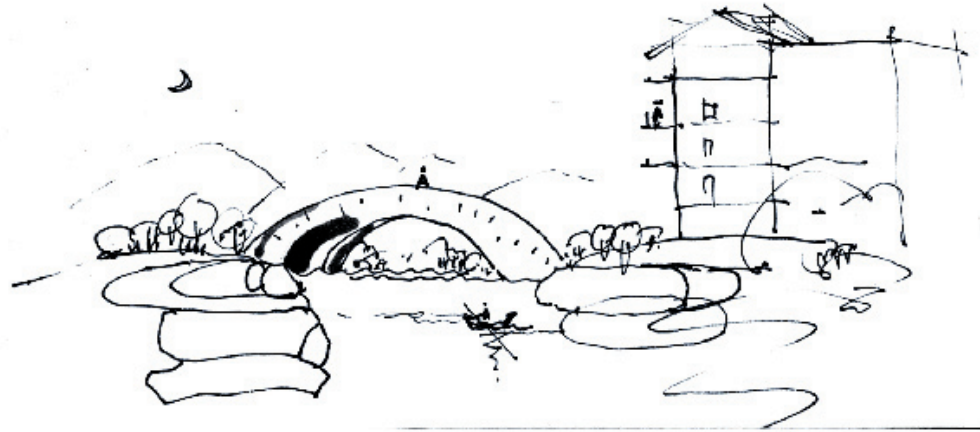
Interior Study - Relation between beam, wall, and objects



The end of the journey is the dining space above the duck pond. The overhanging balcony in the dining room provides an elegant place for people to eat, to enjoy nature, to watch the other people.

Here, I attempted to create a view which a Chinese poet described in his beautiful poem 'Fragment' seventy years ago.





断桥

你站在桥上看风景
别人在楼上看你
明月装饰了你的窗
你装饰了别人的梦

Fragment

You are enjoying views on the bridge
Someone is watching you on the balcony

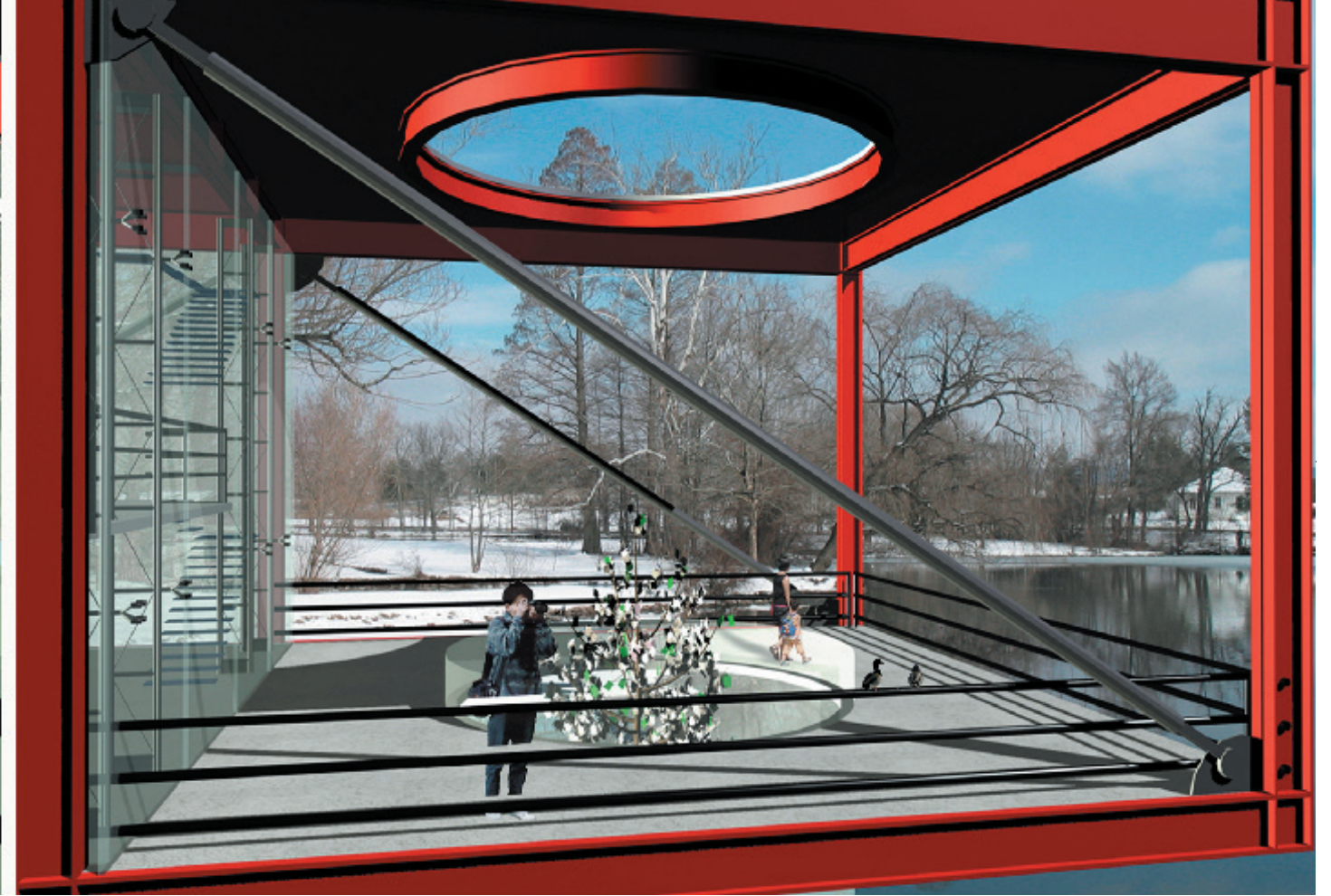
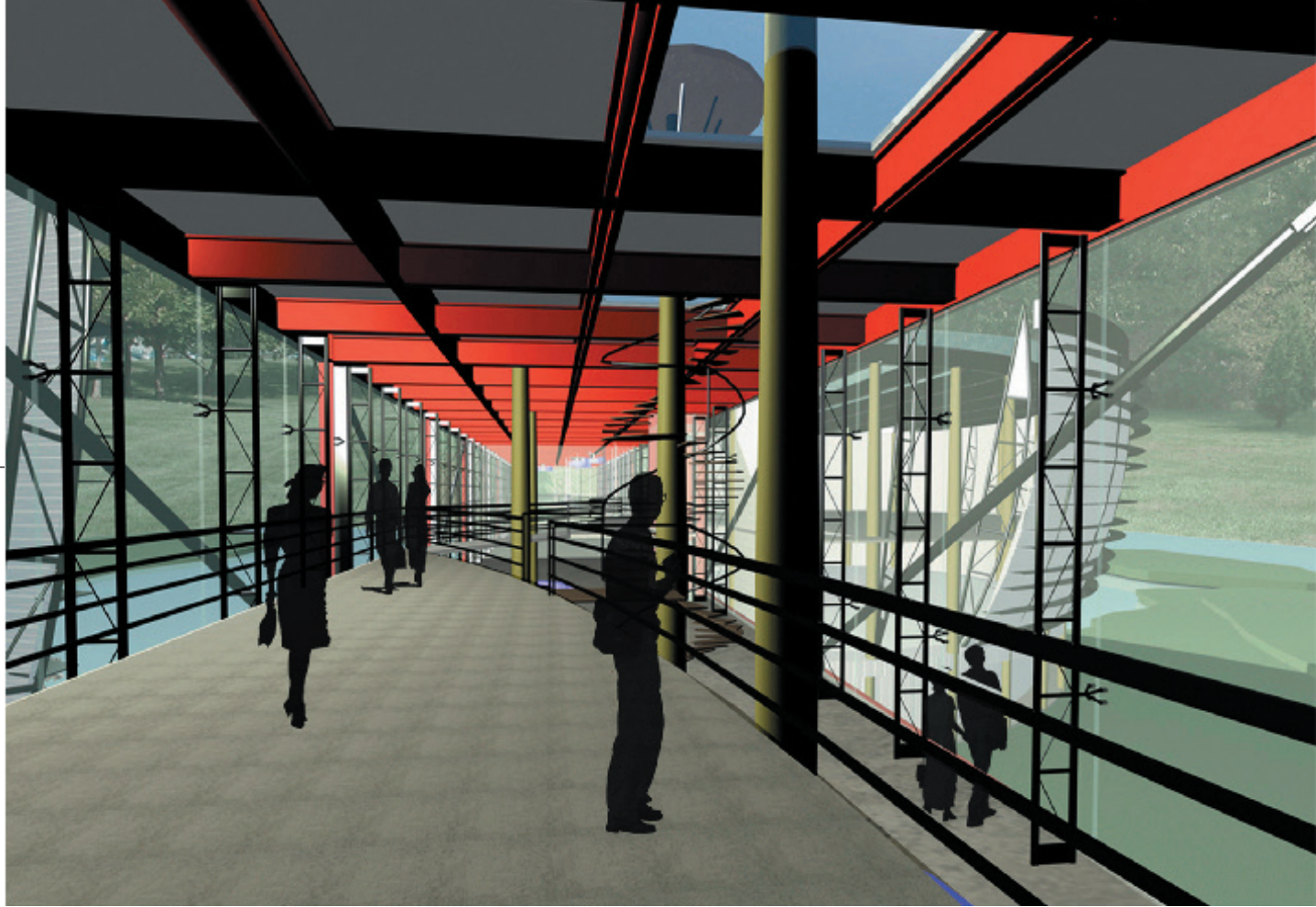
The moon adorns your window
You adorn someone else's dream

Blan zhilin, 1930

Briefly, the poem is about the relation between reality and dream. Here, It completely describes the relation between architecture, nature, and people.



Views of the Progression



Views of the Progression



Here, the red panels of the steel truss with their regular geometry and the picturesque natural landscape of the duckpond enhance one another, creating a kind of harmony by contrast...

SUMMARY OF THOUGHTS

Looking back at the design process, I explored the meaning of spanning, structural expression in design, and I was impressed by an unmeasurable space where nature and architecture merge into one.

I regard this thesis project as a significant step in my architectural life. For me, the documentation of the work offers me opportunities to rethink some questions about materials, light, space and the spirit of architecture. The big achievement from this work is my deeper understanding about structure, which, in most of my former works, was hidden unhappily. Another achievement is my understanding about the difference between the professional and the architect of one's aspirations. As Louis Kahn said, "You can become an architect professionally overnight, but to feel the spirit of architecture from which one makes his offering takes much longer".

I would like to take this long journey joyously.

A C K N O W L E D G E M E N T

I dedicate my thesis book to those who supported me, encouraged me, and loved me during the two years in Blacksburg.

Thanks to my family. Your consistent supports encouraged me to finish the two years of study in Virginia Tech successfully.

Thanks to my committee members: Bill Galloway, Heiner Schnoedt, and Michael O'Brien. All your insight and knowledge on architecture not only inspired my architectural concepts in the past, but also encouraged me to become a mature architect in the future.

Thanks to my beloved friends-Benjamin, Elon, Ying, liwen ,and everyone in our studio. I am so happy that I met all you two years ago in Cowgill and I enjoyed every minutes that we spent together.

I will miss all of you...

B I B L I O G R A P H Y

Peter Blake, *The Master Builders*, Alfred.A.Knorf, New York, 1961

John Lobell, *Between Silence and Light: Spirit in the Architecture of Louis Kahn*, Boulder:Shambhala, 1979

Richard C.Levene, *El Croquis 44 Tadao Ando*, 1972

Peng Yigang, *Analysis of The Traditional Chinese Garden*, People's Republic Publisher, 1976

MichellenYeh, *Anthology of Modern Chinese Poetry*, Yale Press, 1992

Virginia Tech's Webpage of Campus Master Plan, 1994

VITA

Yongmei Gao
August 10th, 1972

2003-2005
Master of Architecture
Virginia Polytechnic Institute and State University
Blacksburg, Virginia

1995-2002
Architectural Designer
IPPR Engineering International
Beijing, China

1990-1994
Bachelor of Architecture
North China University of Technology
Beijing, China