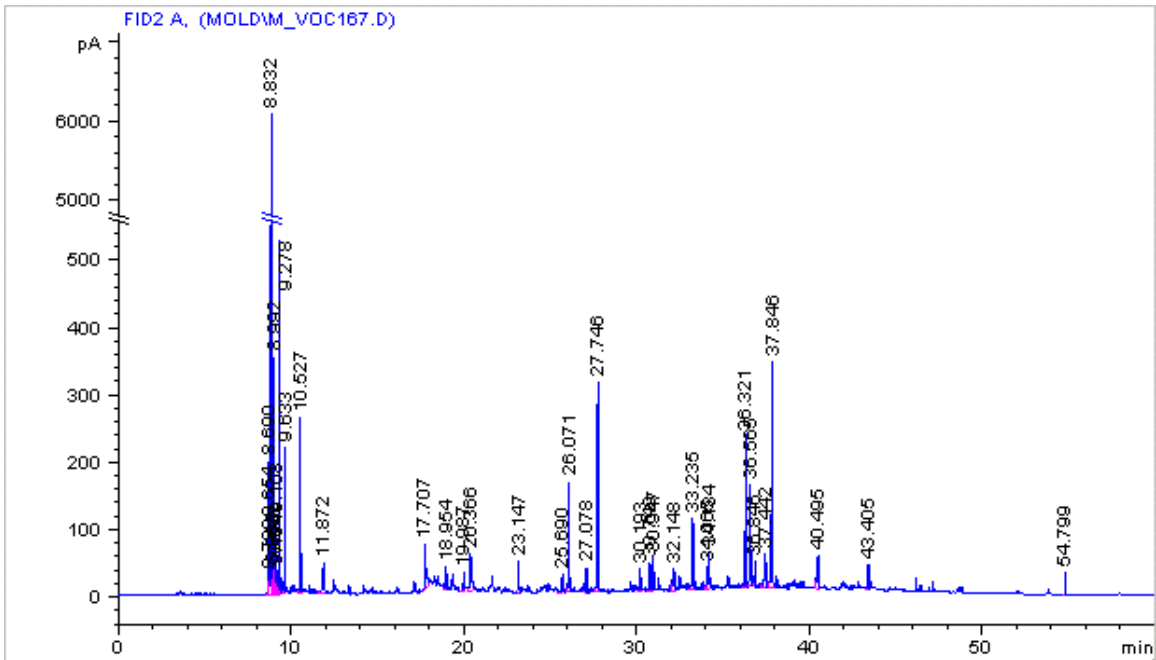


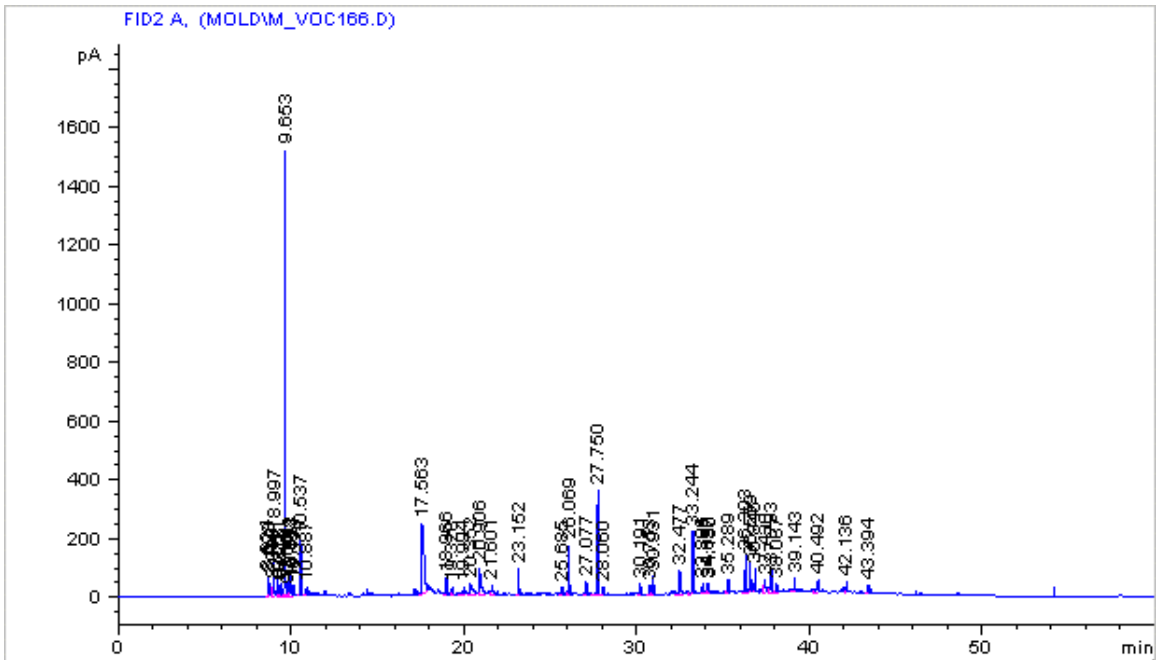
APPENDIX F

**Duplicate Sample Chromatograms of the Samples
Sent to Dr. Wang for GCMS Analysis**

Duplicate samples of the July, 1999 analysis by Dr. Wang

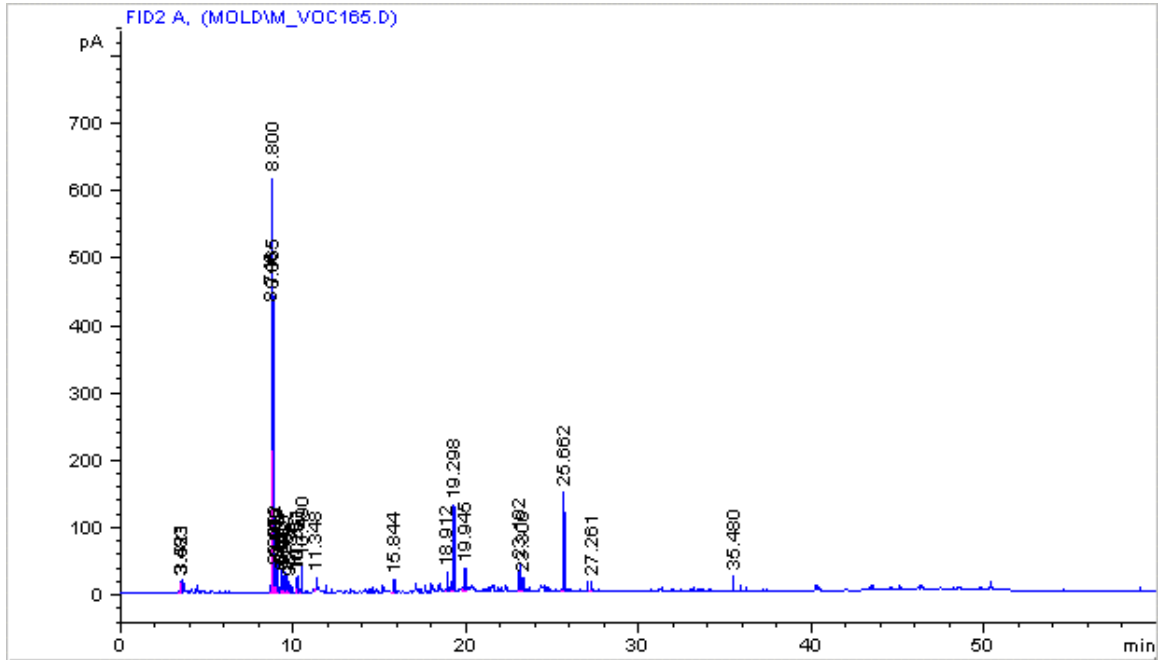


Aspergillus Sample - Tube D collected with tube F for 138 hours from 7/14/1999 to 7/20/1999 at 6 ml/min. (Injection 167)



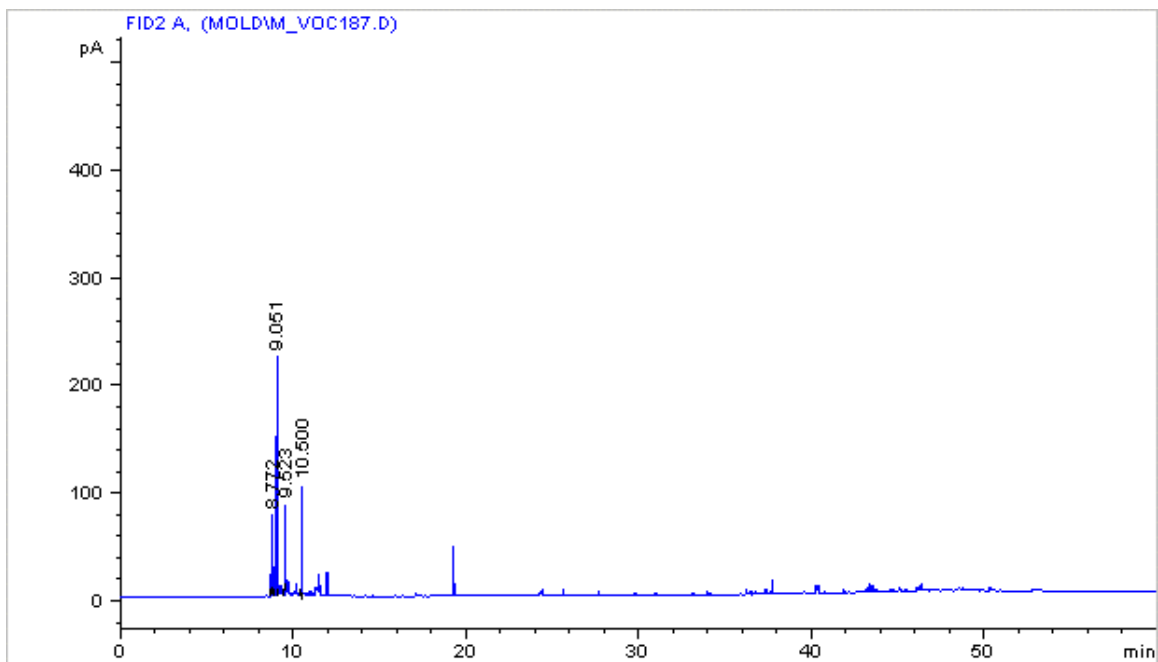
Penicillium Sample - Tube O collected with tube K for 168 hours from 7/13/1999 to 7/20/1999 at 6 ml/min. (Injection 166)

Duplicate samples of the July, 1999 analysis by Dr. Wang (continued)



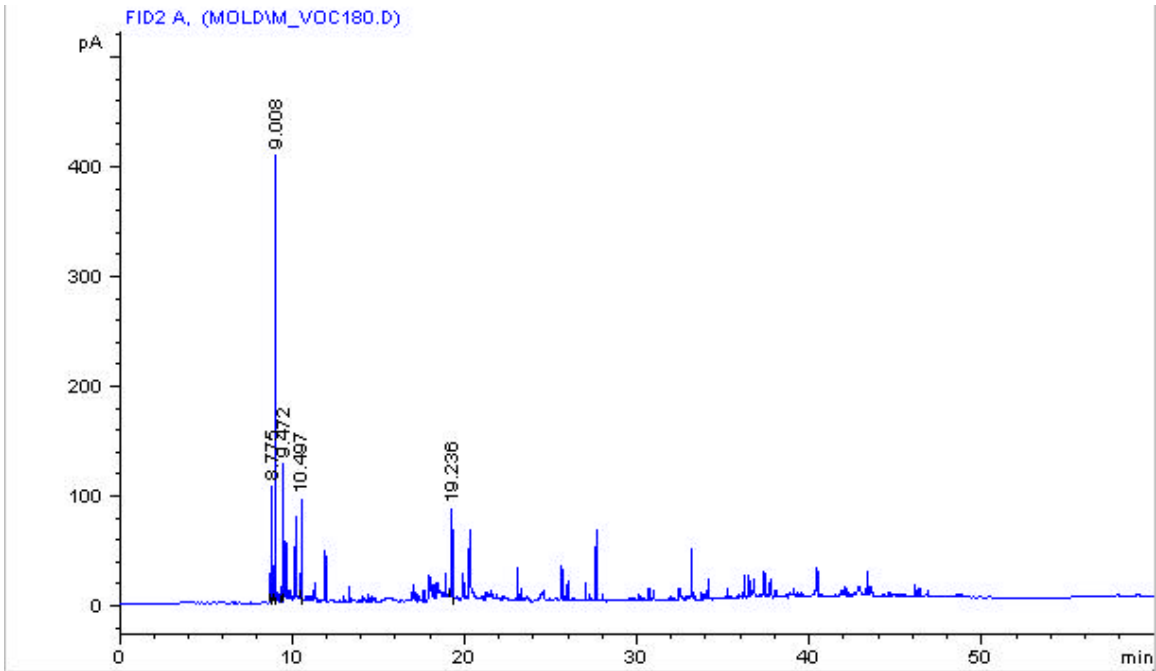
Indoor Air Sample - Tube A collected with tube H for 27 hours from 7/25/1999 to 7/26/1999 at 1.9 ml/min. Location - 403 Hampton Ct. (Blacksburg, VA) (Injection 165)

Duplicate samples of the November, 1999 analysis by Dr. Wang

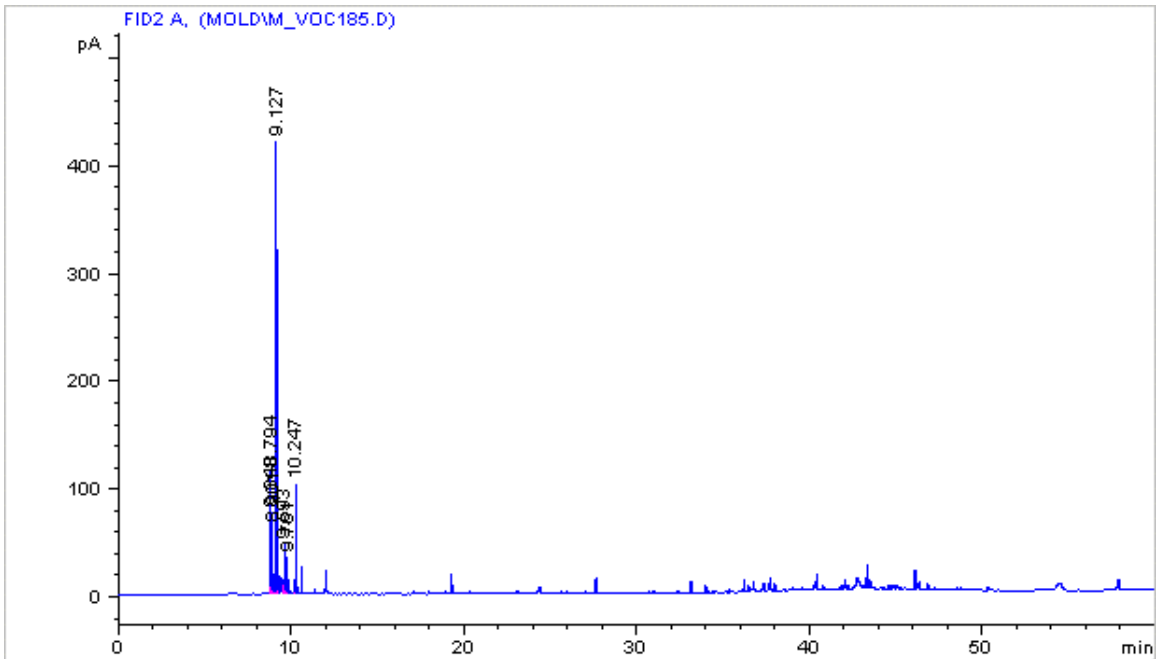


Sample Blank - Tube H collected with tube I for 99 hours from 10/17/1999 to 10/21/1999 at 6.6 ml/min. (Injection 187)

Duplicate samples of the November, 1999 analysis by Dr. Wang

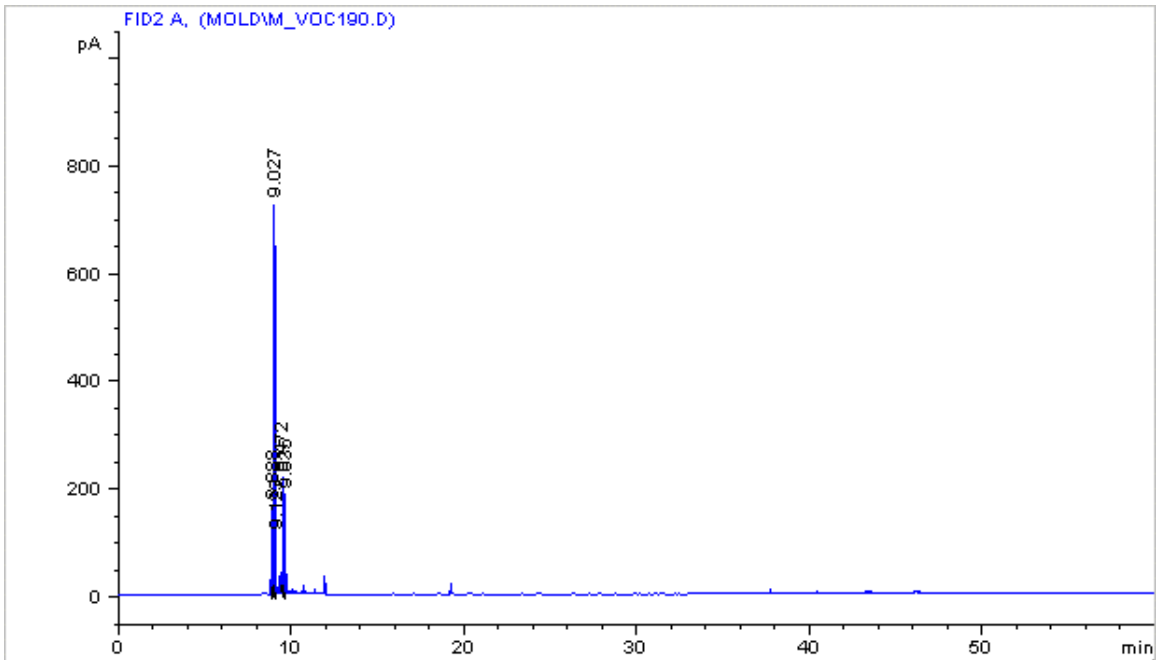


Aspergillus Sample - Tube O collected with tube D for 119 hours from 9/29/1999 to 10/4/1999 at 6.5 ml/min. (Injection 180)

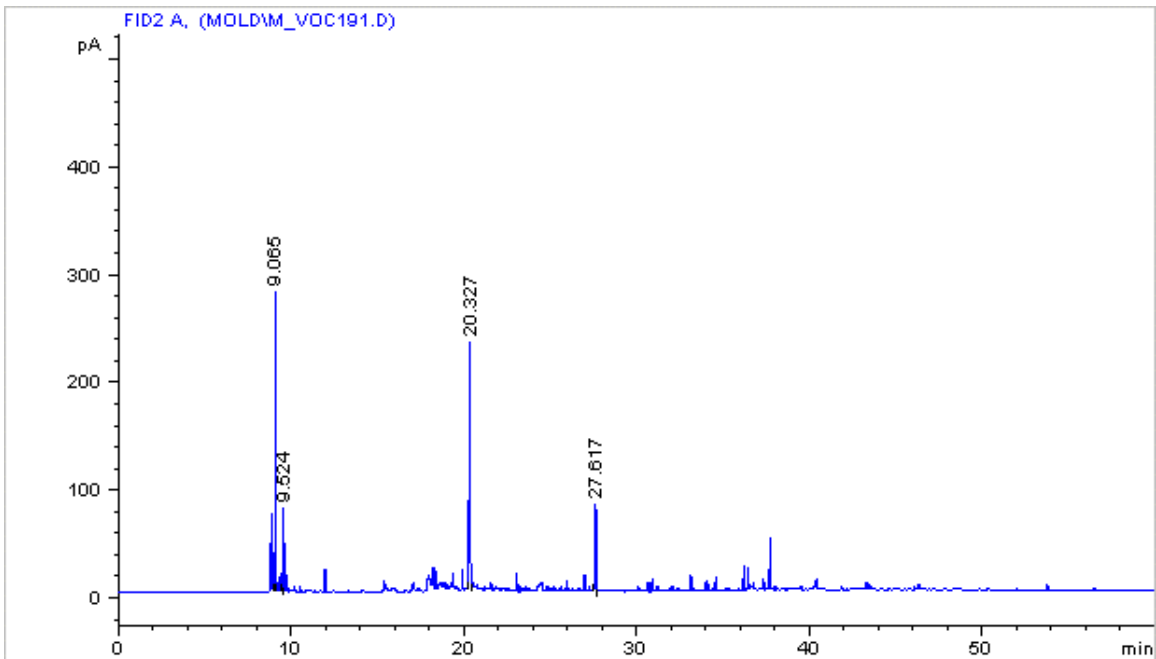


Aspergillus Sample - Tube Q collected with tube G for 105 hours from 10/4/1999 to 10/8/1999 at 6.5 ml/min. (Injection 185)

Duplicate samples of the November, 1999 analysis by Dr. Wang

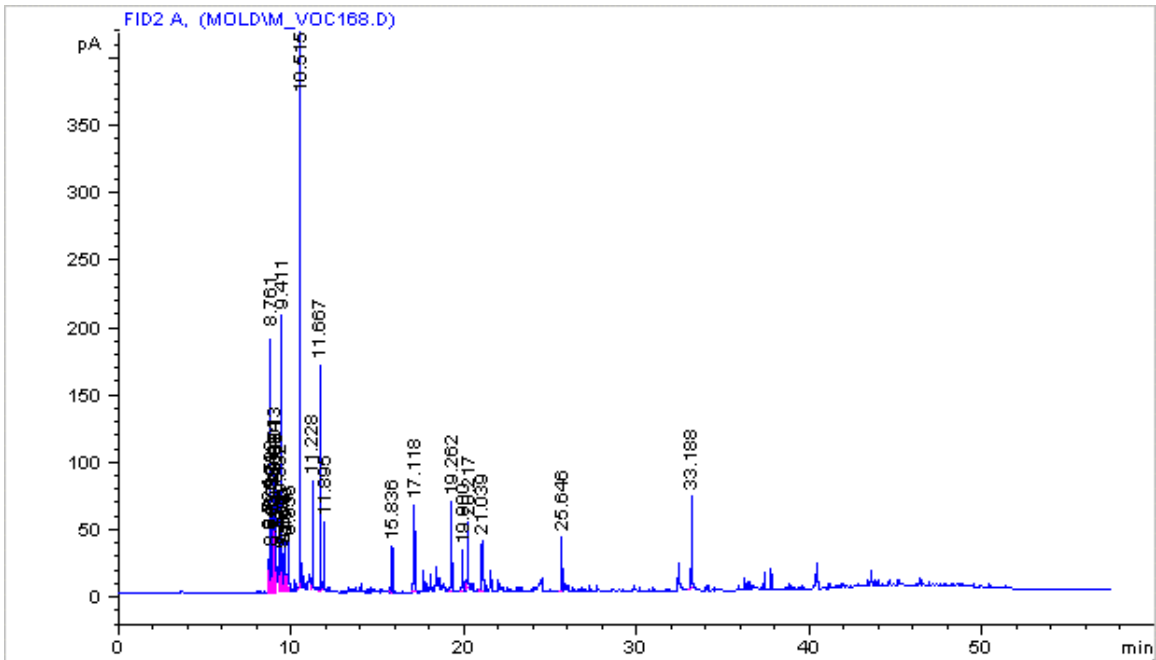


Penicillium Sample - Tube K collected with tube F for 92 hours from 10/25/1999 to 10/29/1999 at 6.6 ml/min. (Injection 190)

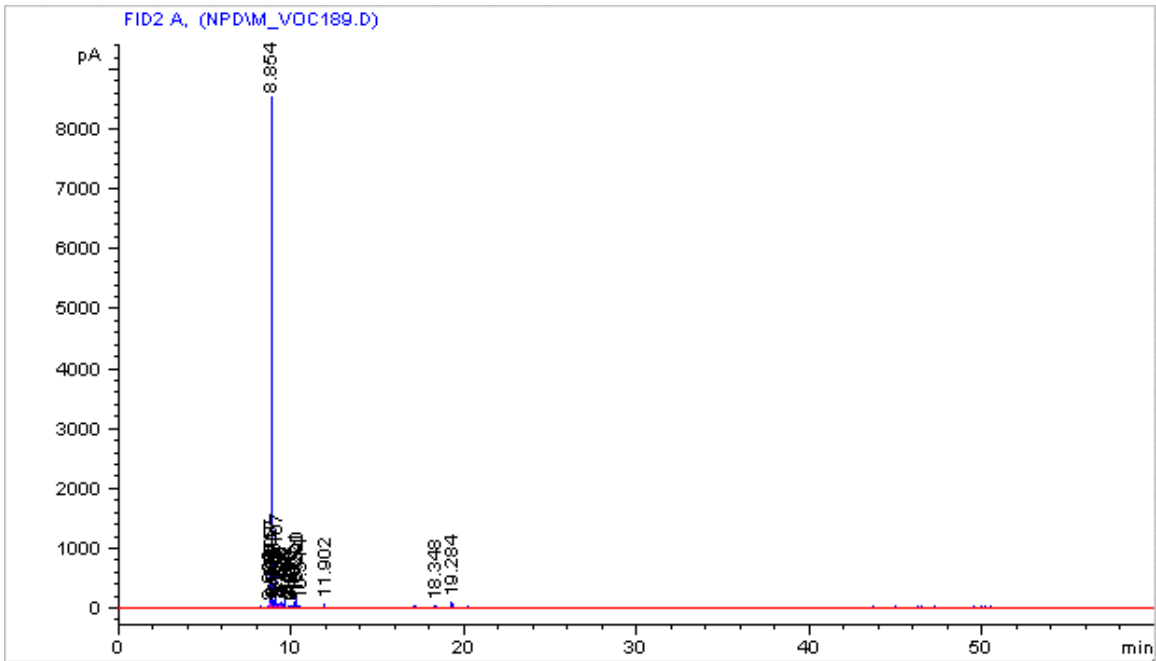


Penicillium Sample - Tube E collected with tube A for 97 hours from 10/29/1999 to 11/2/1999 at 5.8 ml/min. (Injection 191)

Duplicate samples of the November, 1999 analysis by Dr. Wang



Apartment Sample - Tube T collected with tube N for 106 hours from 8/5/1999 to 8/9/1999 at 1.3 ml/min. Location - 617 Lee St. (Blacksburg, VA) (Injection 168)



Apartment Sample - Tube Q collected with tube R for 114 hours from 8/9/1999 to 8/14/1999 at 1.2 ml/min. Location - 617 Lee St. (Blacksburg, VA) (Injection 173)