

Book II

Incubation
On making

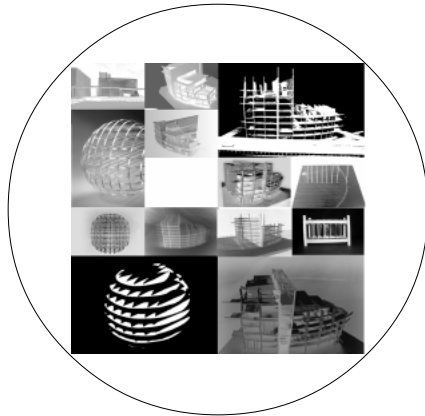




Table of contents



Book I Chrysalis

Investigation



Book II Incubation

On Making

Synergy of form

4

On making

6

Toward built form



Book III Imago

Project



Book IV Coda

Addendum

Synergy of the form

After investigation of the site, I developed an ambivalent form, “a gridsphere.” In the gridsphere, a grid structure merges with an organic form, a sphere, to develop a highly organized and homogenous order. One of the unique characteristics of this form is derived from the ambivalence between the grid and the sphere. The exactness of vertical and horizontal planes make the sphere, and the dimension of each plane is determined by the pivot point of the sphere. In this form, the sphere has sprung from the grid, and grids exist within a sphere. One is inseparable from the other to be a whole. I believe that this form has potential for architectural synergy.

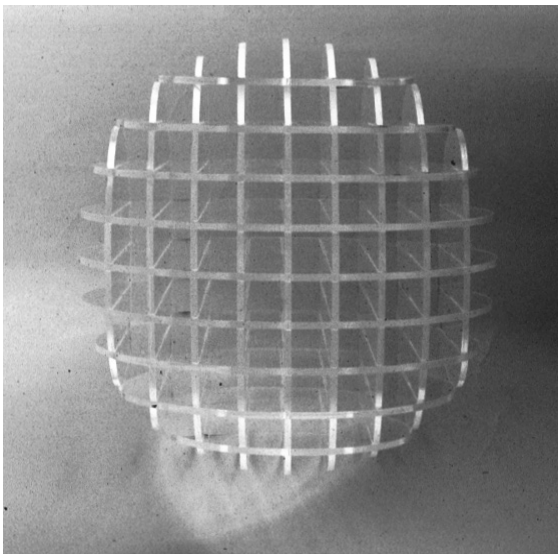
Sphere as unity, autonomy, grid as homogenous order.

Articulated and modulated vertical and horizontal planes...

This gridsphere is an abstract form which possesses all the qualities I was looking for.

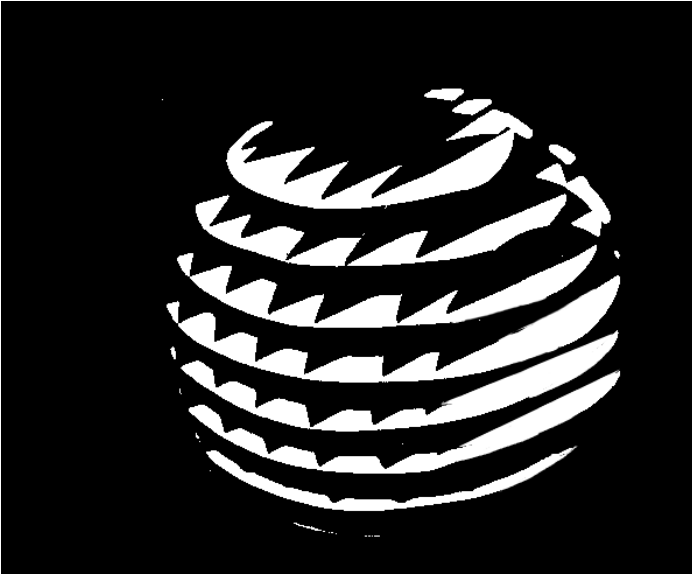
My architectural quest for a built form has just started.





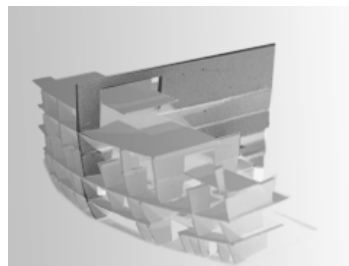
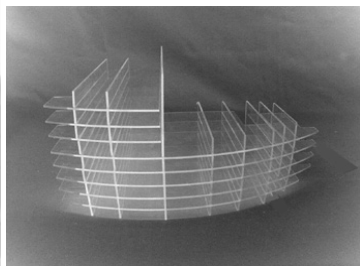
On Making

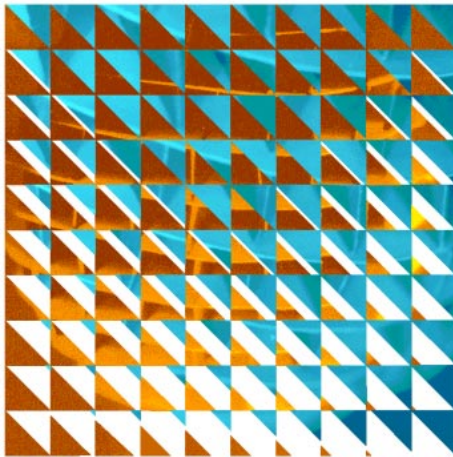
Toward built form



In the act of designing, it is always better to have as many vehicles as possible, to explore and communicate our ideas. However, it is also helpful to limit our tools to explore ideas. Within the same frame of format, and in the reiteration of physical model making, things like order, hierarchy, relationship of elements, space, and structure become more apparent.



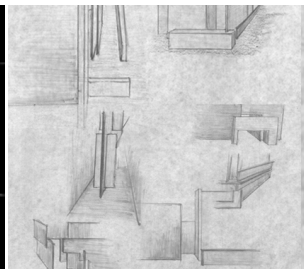
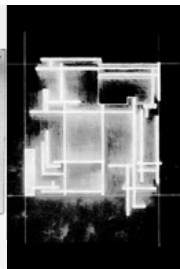
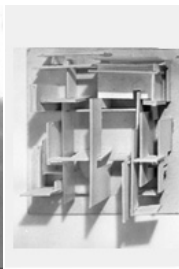
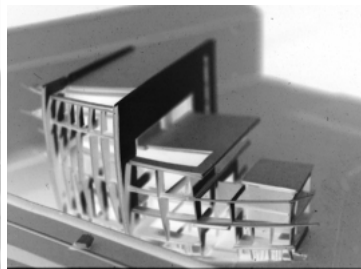


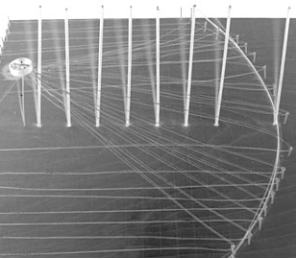


Initial rule of vertical and horizontal relationship

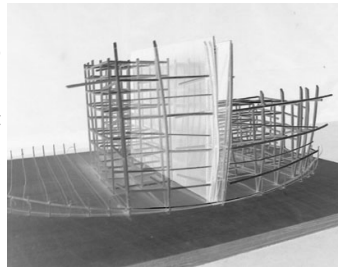
What really transforms here are my thoughts, perception toward insights, and decisions. None of these models can be transposed with each other, because each has its own revelation in its own time.

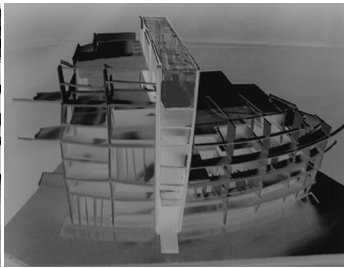
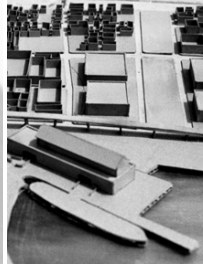


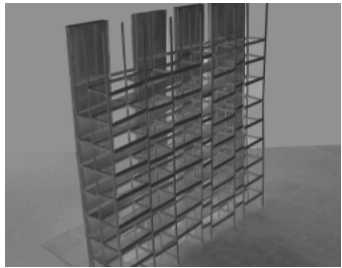
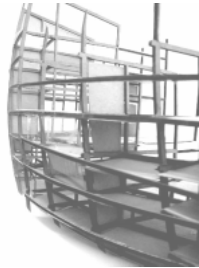
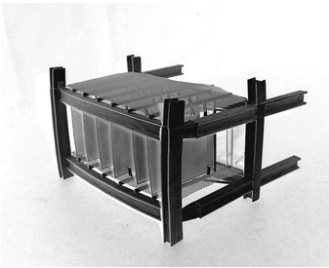




Transformation from an abstract form to a built form stimulates my imagination. My interest lies not in the difference in appearance between them, but in the insights which help me decide a certain direction.







Through engagement of physical form, the oscillation between ideas and built form becomes greater. Each piece of paper, plexiglass, wood stands for a piece of my desire, my decision, my belief. This is how I constantly move forward. Through this intimacy with physical matter, the amplitude of my thoughts between one model version and the next provides enough insight to help make my way through the project.

