

Absorbing Darkness

Woo-Ram Jung

Thesis submitted to the faculty of the Virginia Polytechnic Institute and State University
in partial fulfillment of requirements for the degree of

Master of Architecture in Architecture.

Chair Thompson, Steve

Committee member Galloway, William

Committee member Doan, Patrick

September 10, 2010 Blacksburg, VA

Abstract

Absorbing Darkness Woo-Ram Jung

Beams of light can create volumes of darkness that help define an experience. Light and darkness in enclosed space make me respond to my self.

It is a canyon empty of everything, yet filled with the total absence of light. And the quality of this darkness is uniquely bewildering, what's more, a thick and viscous mass of black air that seems to brush against your face, limitless and seething. It is darkness-visible.

Darkness forces me to be isolated from the world.

Without any external input, I start to talk and hear from myself.

As well as, I start to feel my body from top to toe with all senses except for the sense of sight. It goes slowly, and the interaction with myself, which is experiencing darkness, puts my mind in calm.

In that level of calm, the experience of darkness wanes as we adjust to the environment, gradually becoming aware of people and walls and even faint shadows.

This project is an attempt at designing spaces that allows a person to be absorbed in darkness.

Contents

Abstract 02

Making up 03 - 08

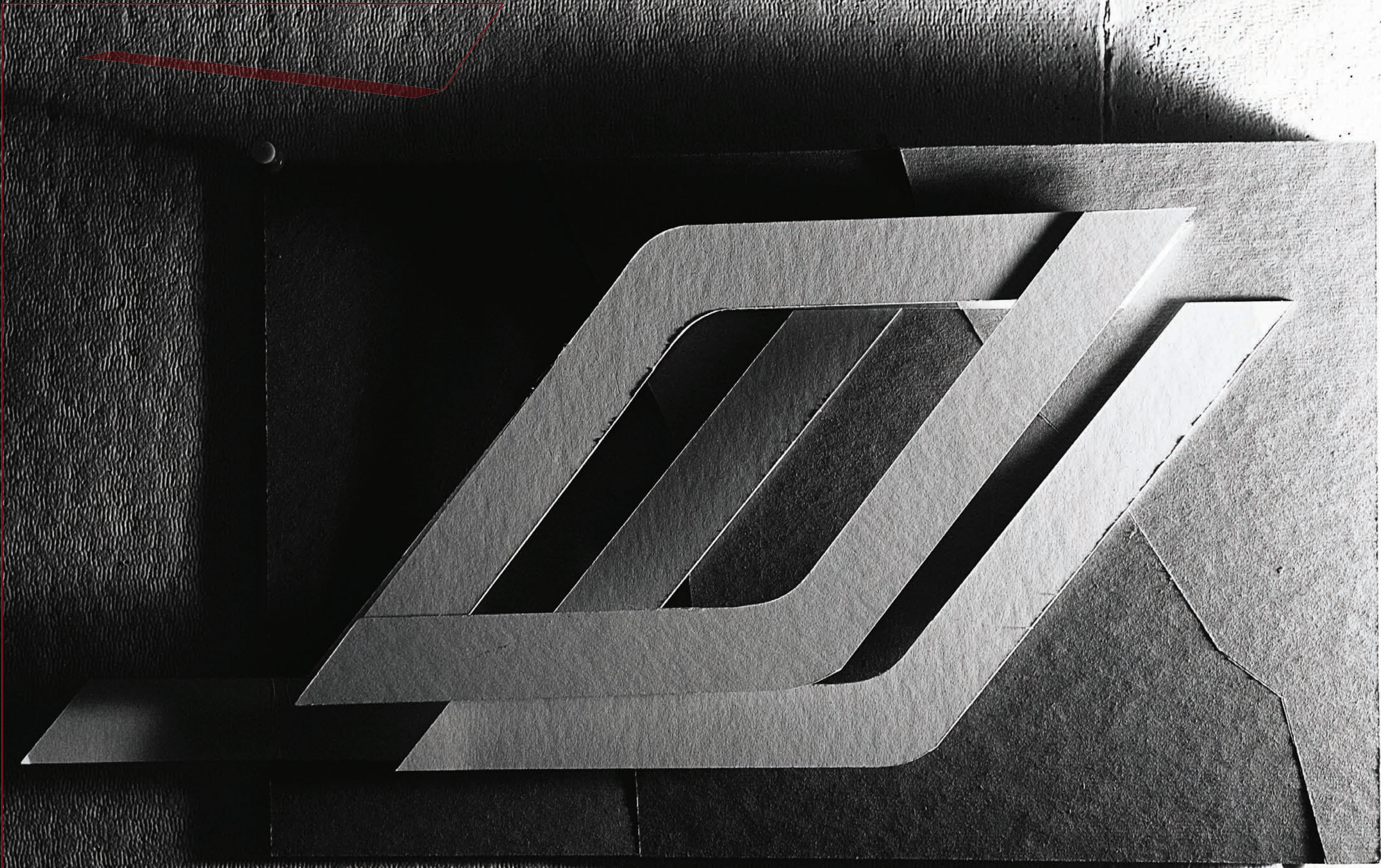
Idea

Plans 16 - 18

Sections 19 - 25

Scenes of Darkness 09 - 15



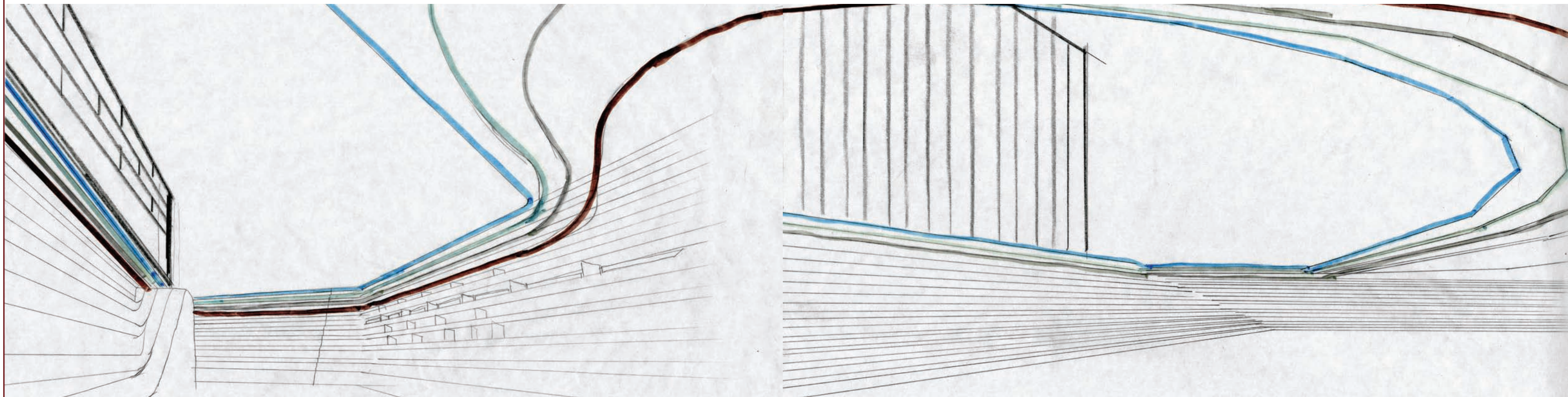
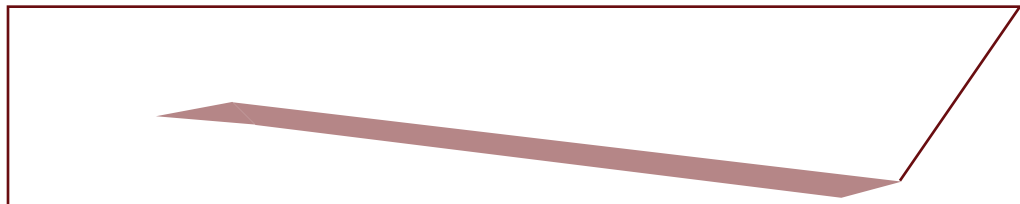


**The site is a part of the city.
It is a place where people
can easily experience the
building.**

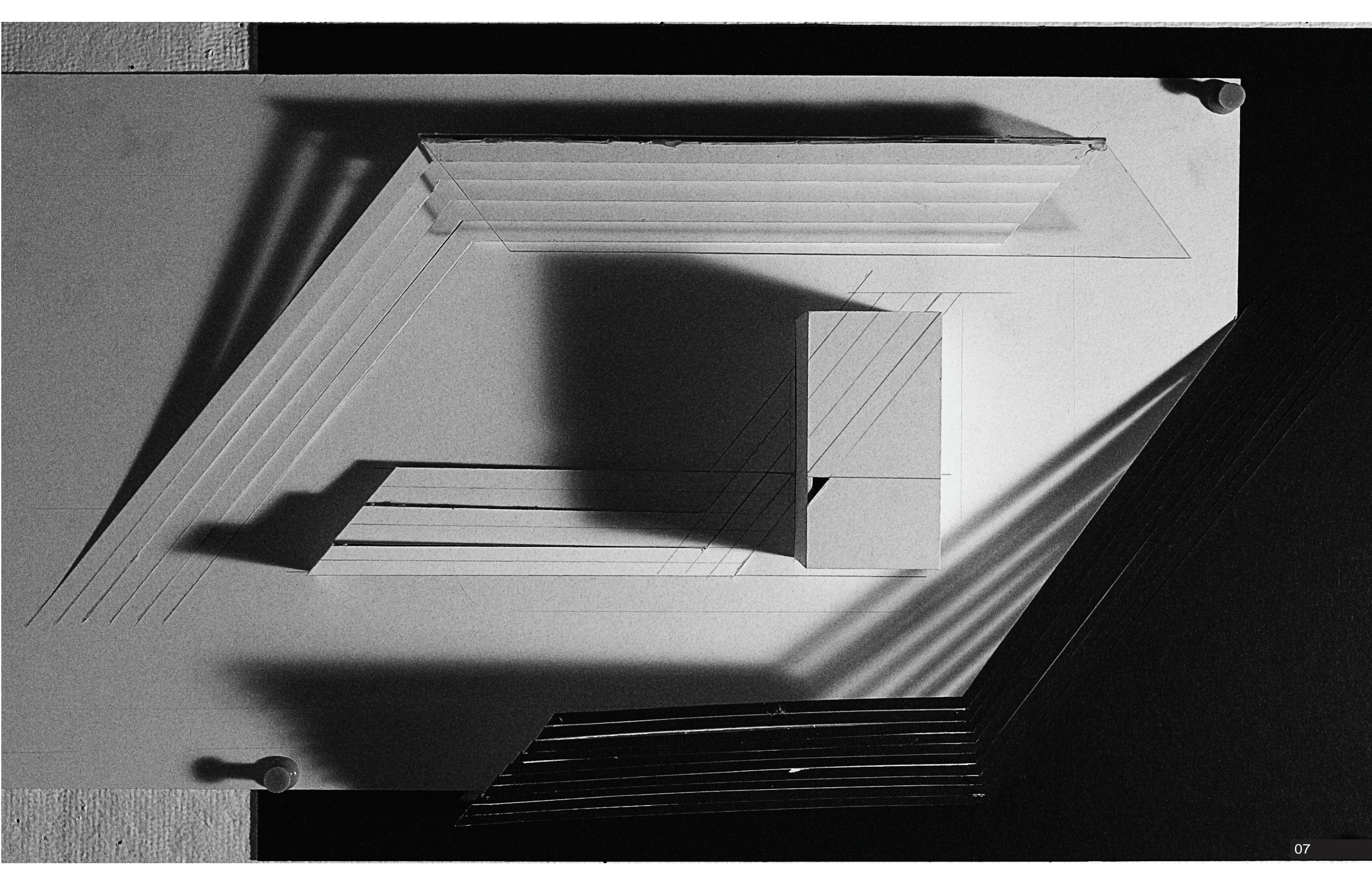
**When people get into this
site, they will start to follow
the movement of explicit in
the form.**

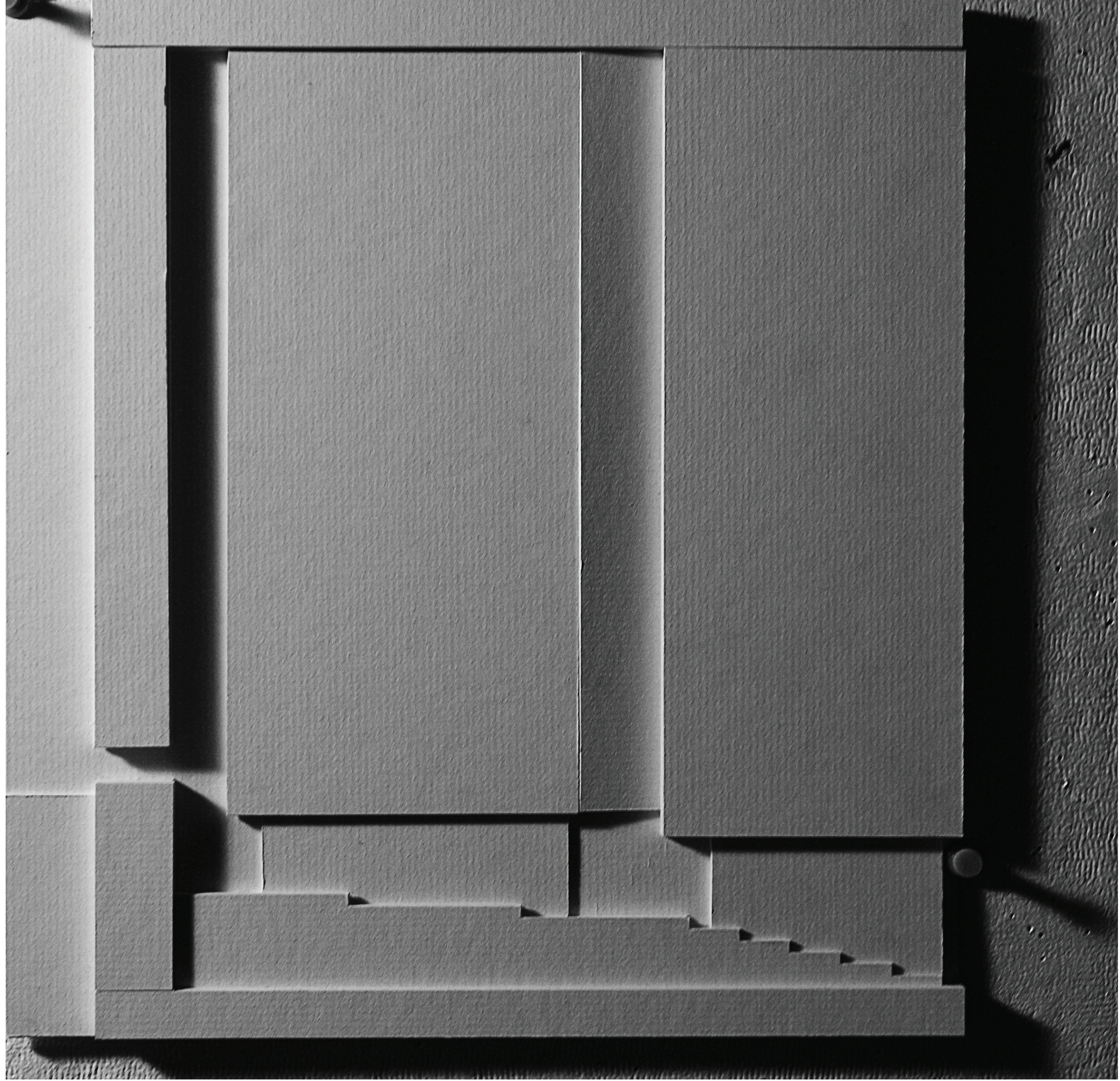
**The entire building works as
a space for motion and rest.**

**The basic forms are evolving
into elements of the building,
such as stairs, seatings, roof,
wall, and ornamental object
for façade.**



what is the function of an element in architecture? An element has possibilities to be in several places rather than a specific position. With different positions and scales, elements can play different roles in architecture such as a line of stairs becoming a roof line.



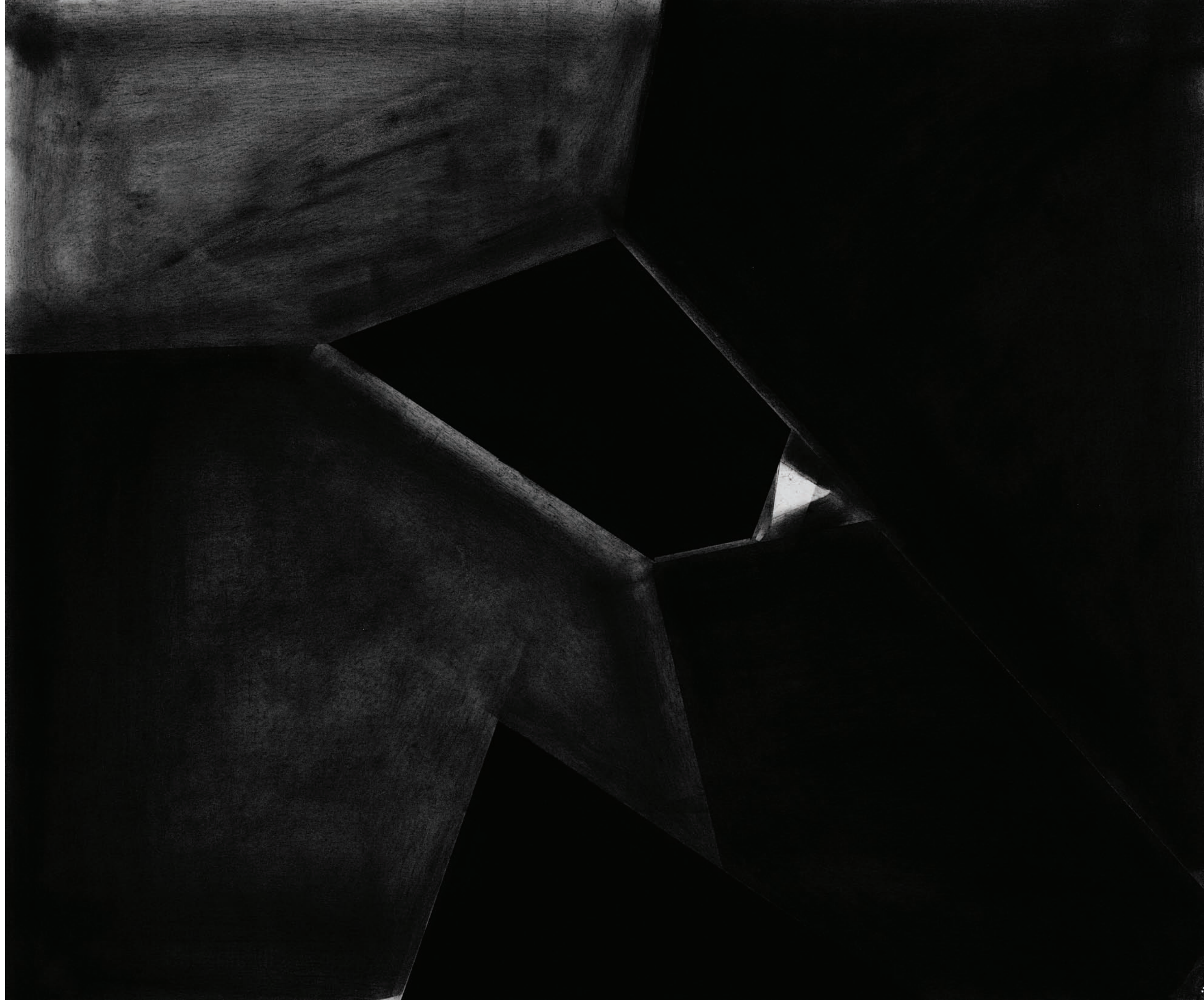


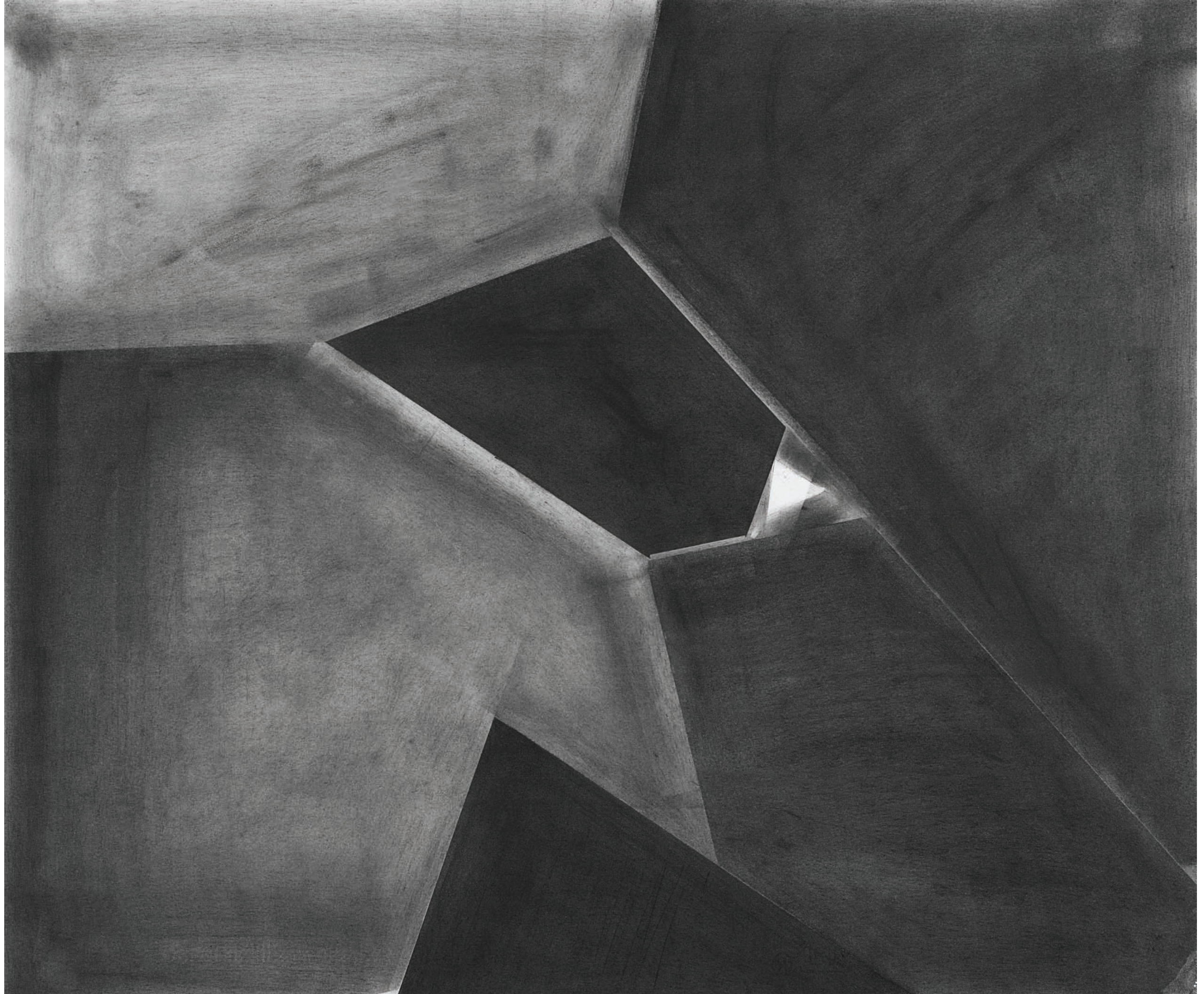


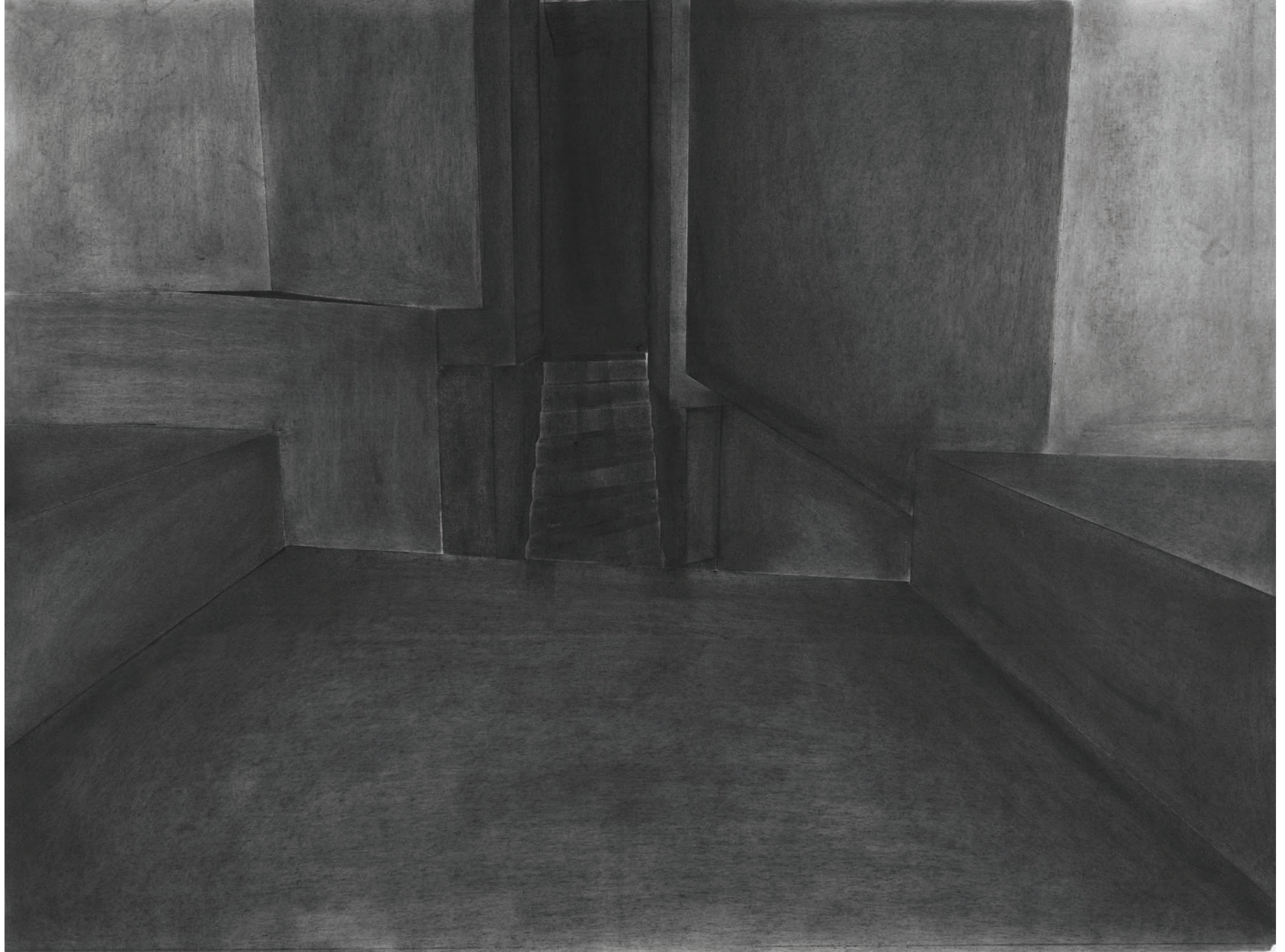
as you walk into this space, you sense a vast and dense field of impenetrable blackness ahead.

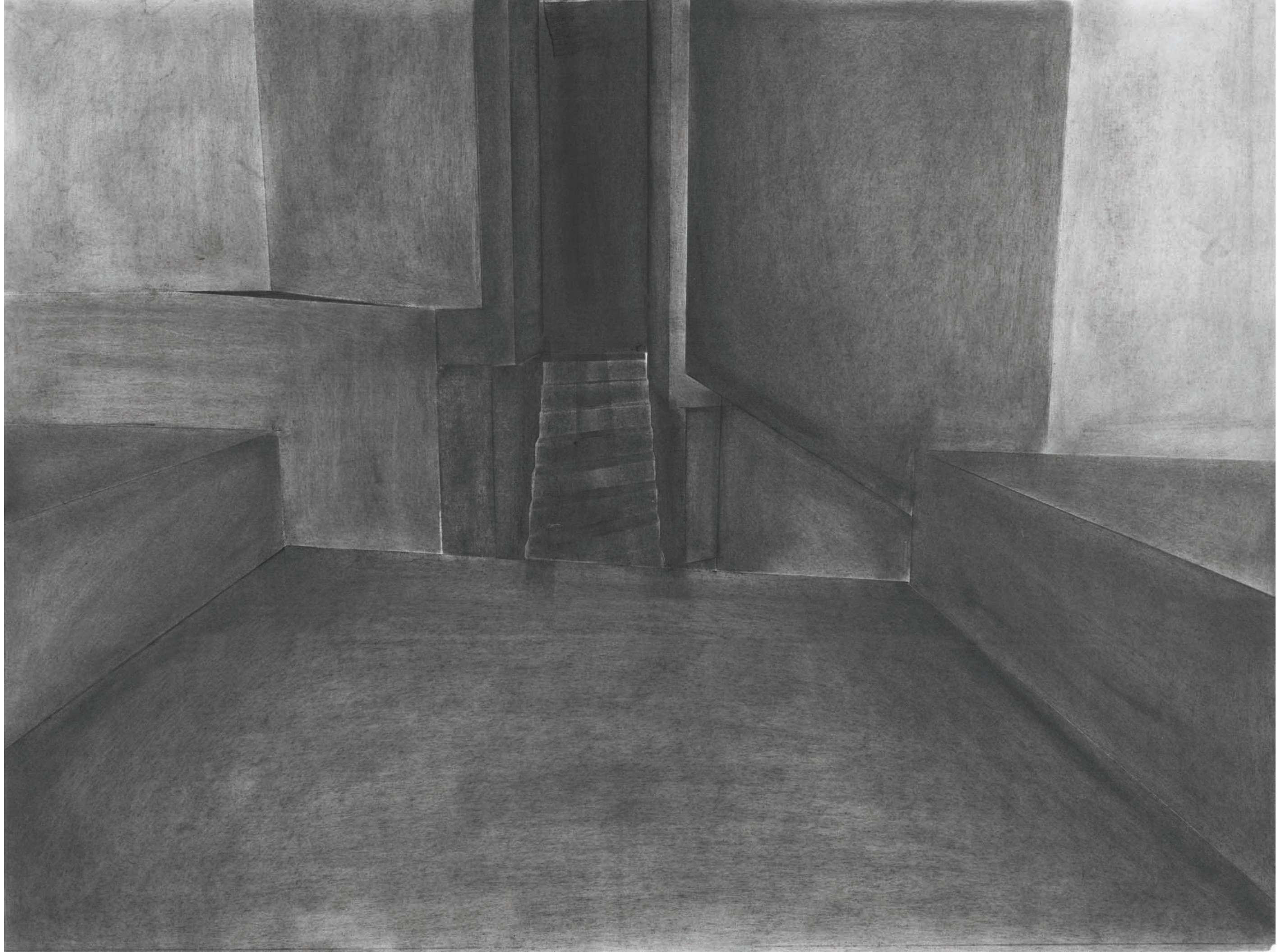






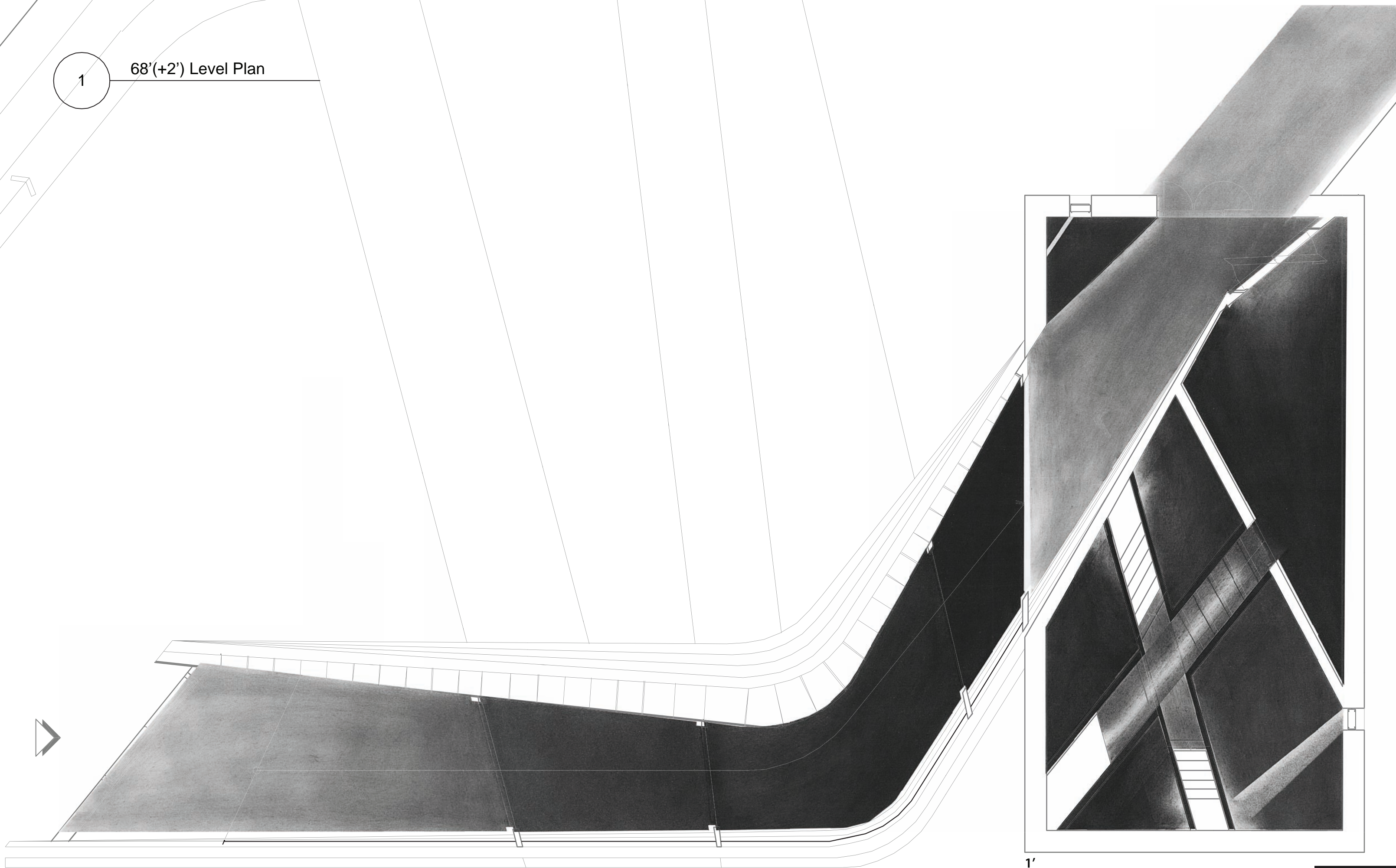






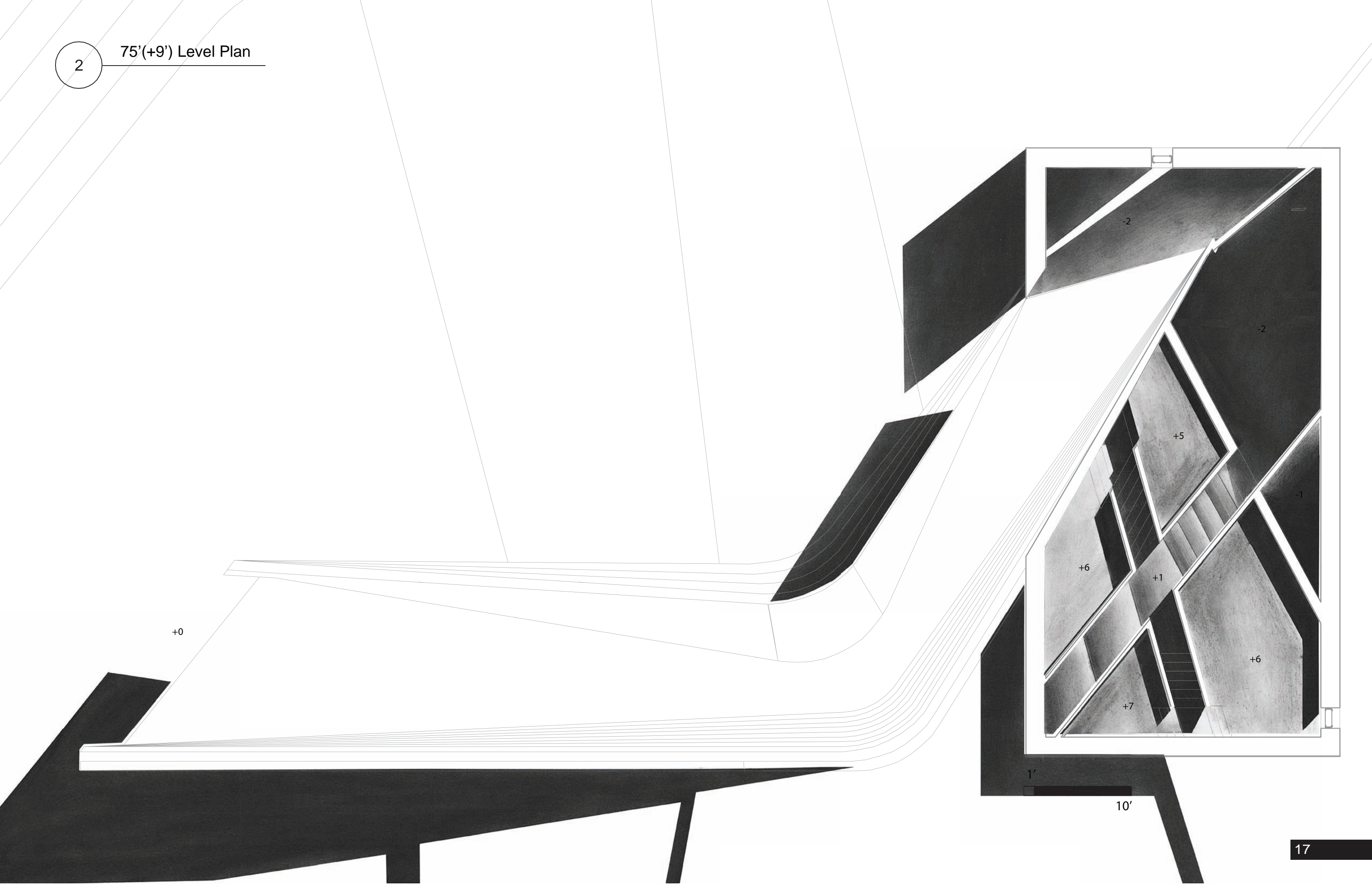
1

68'(+2') Level Plan



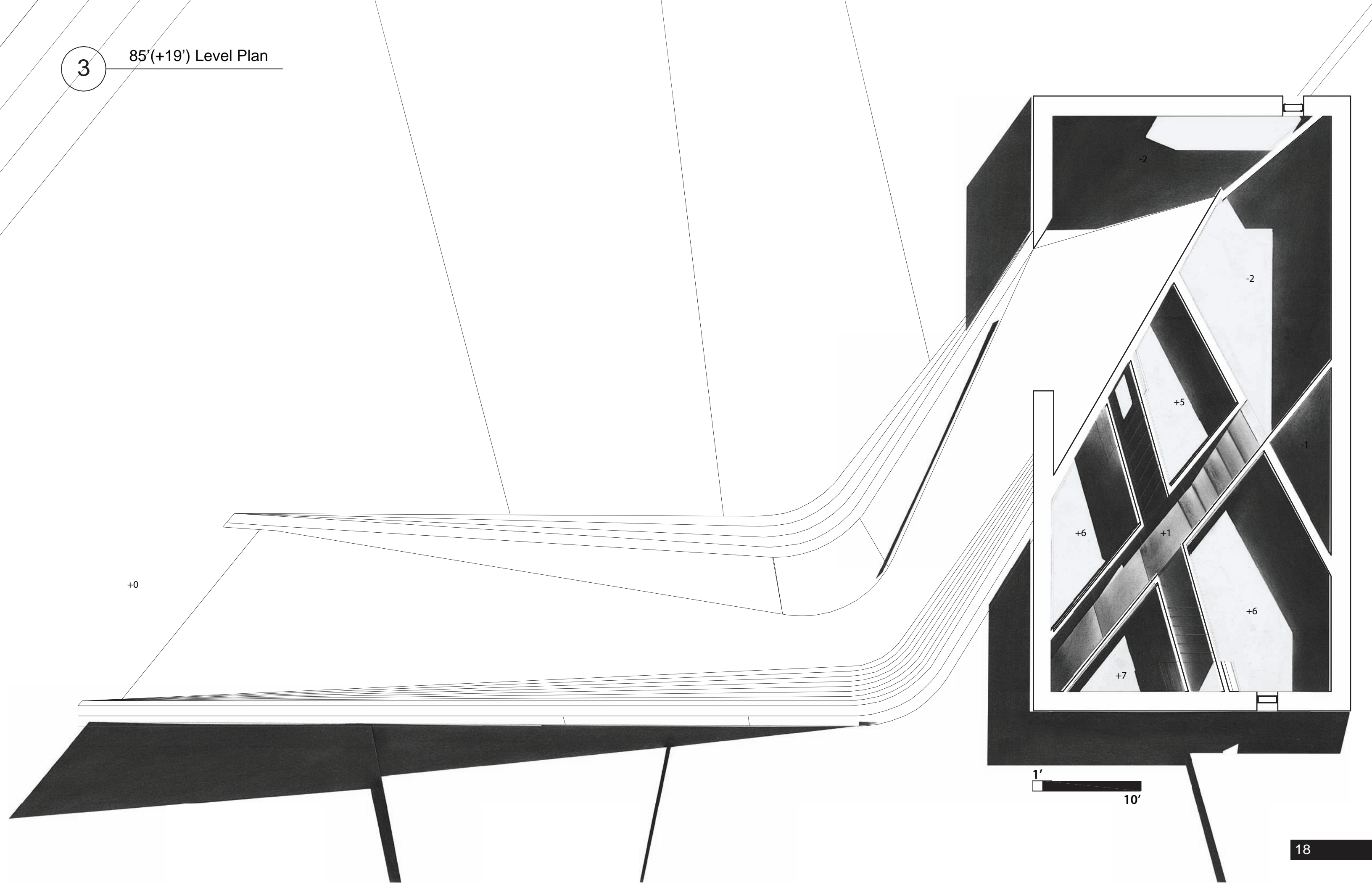
2

75'(+9') Level Plan



3

85'(+19') Level Plan



+0

+6

+1

+5

+7

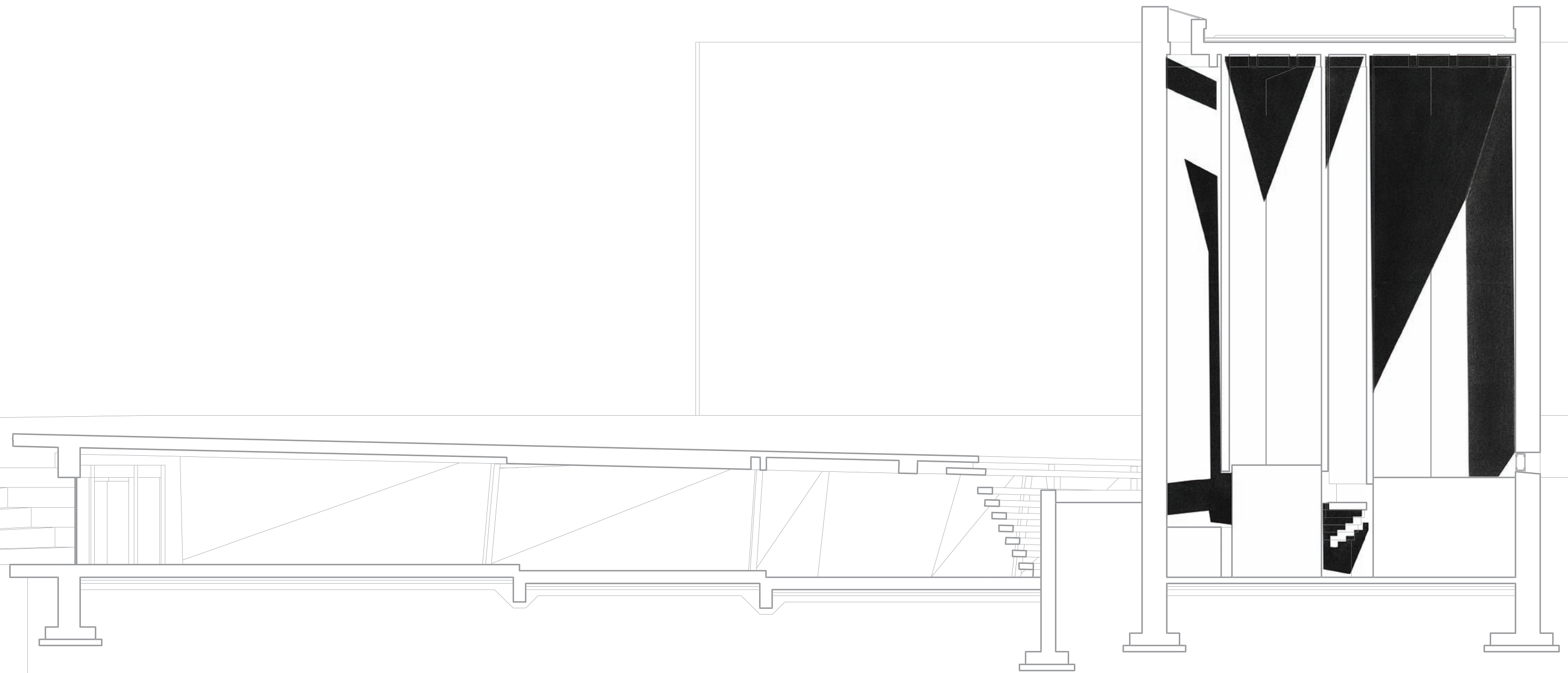
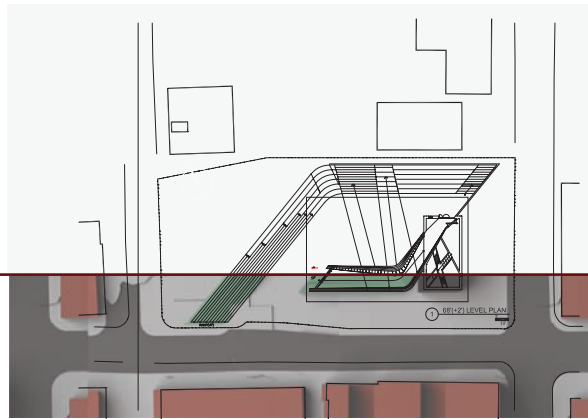
+6

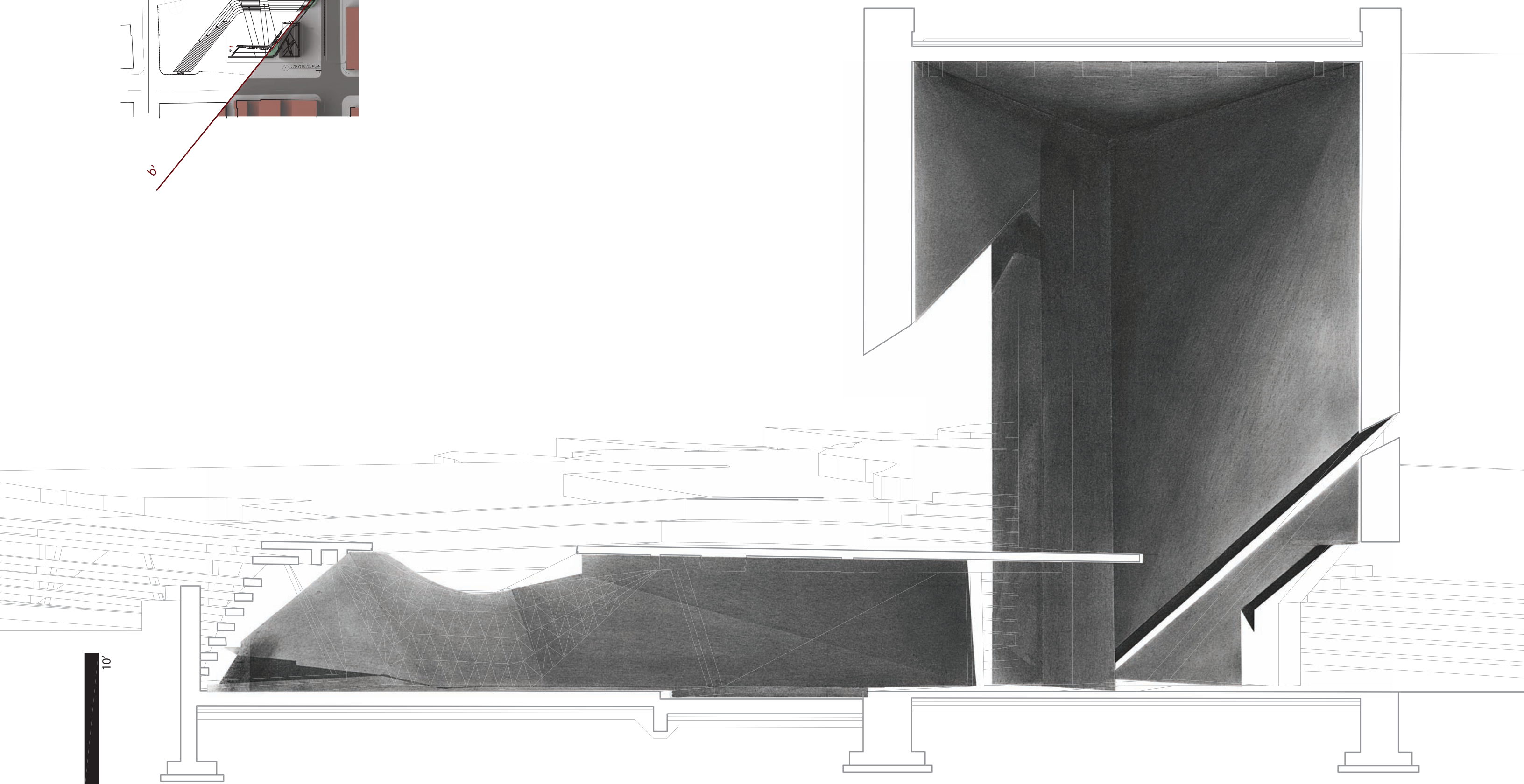
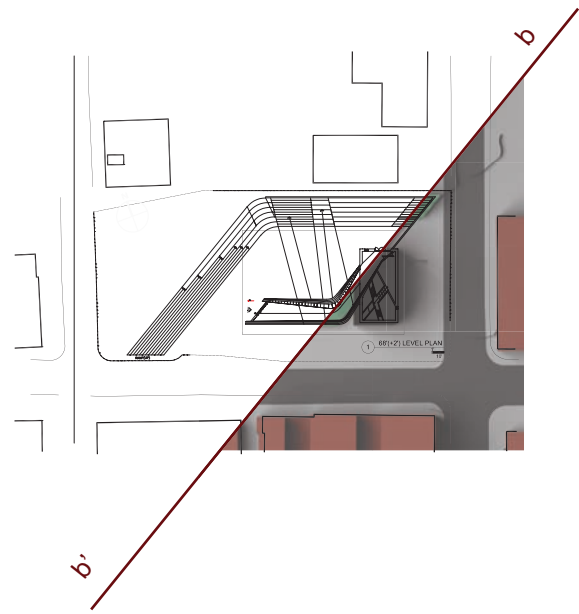
-2

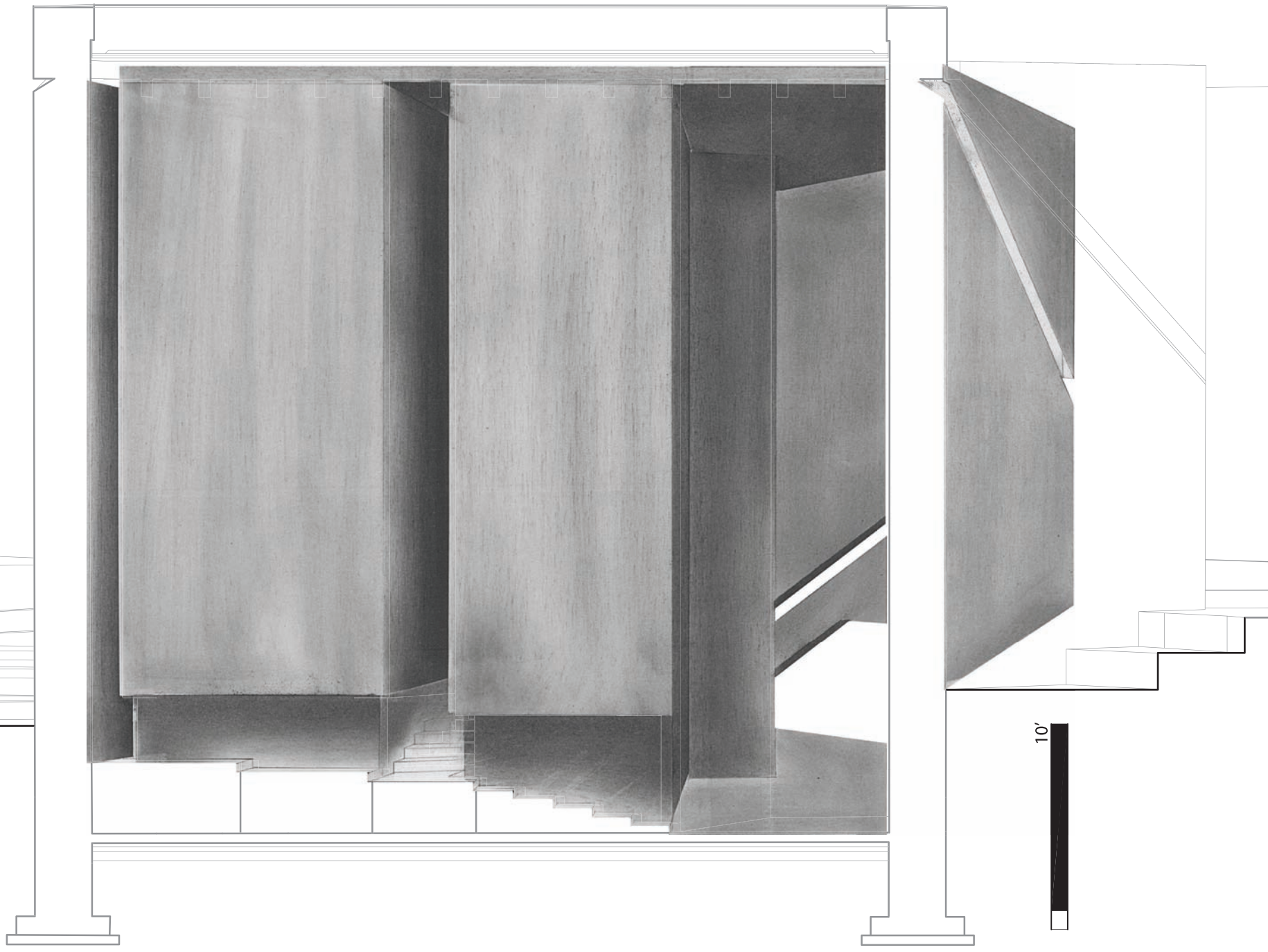
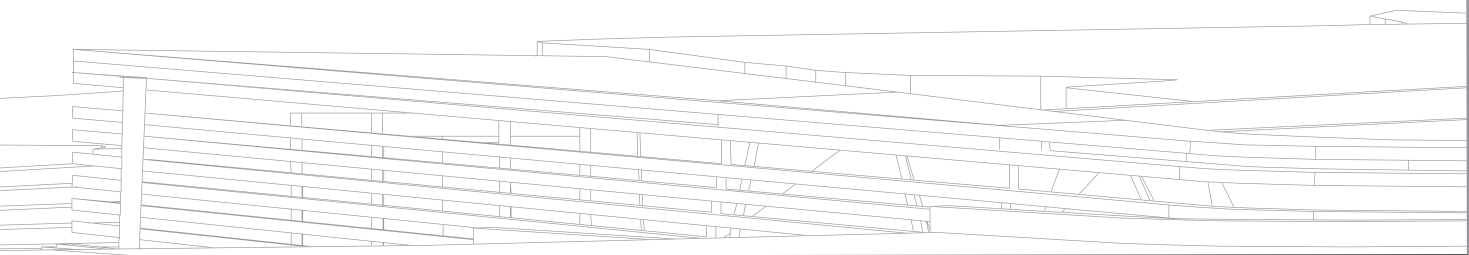
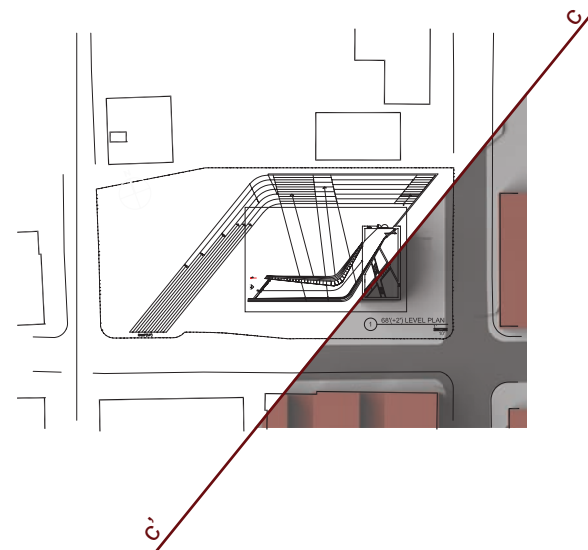
-2

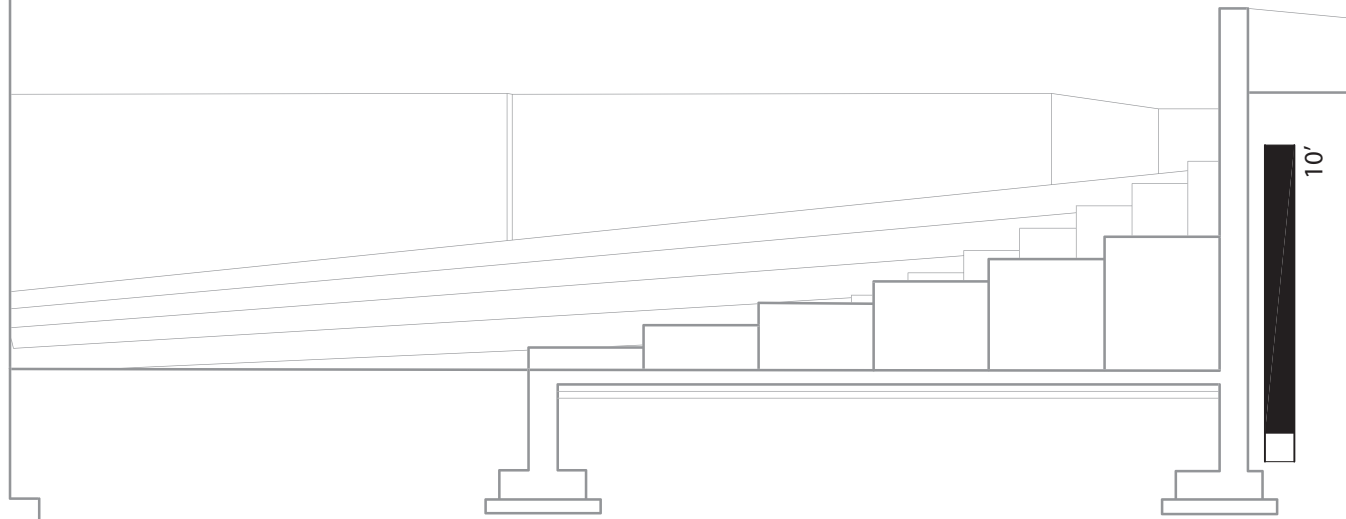
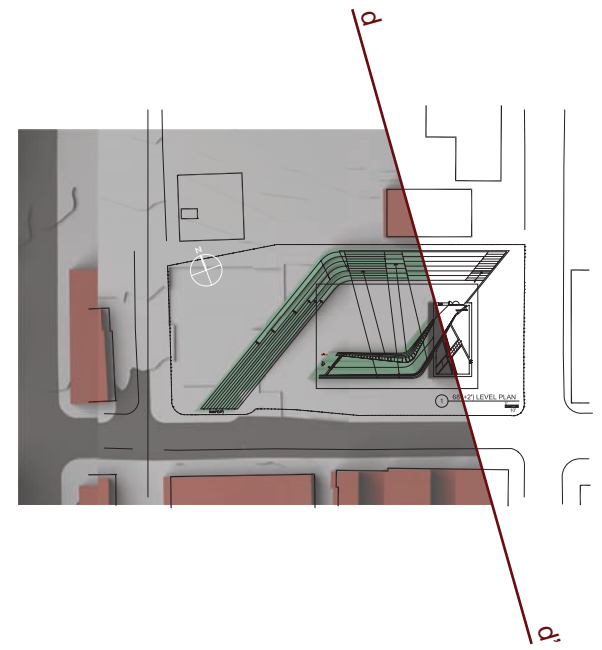
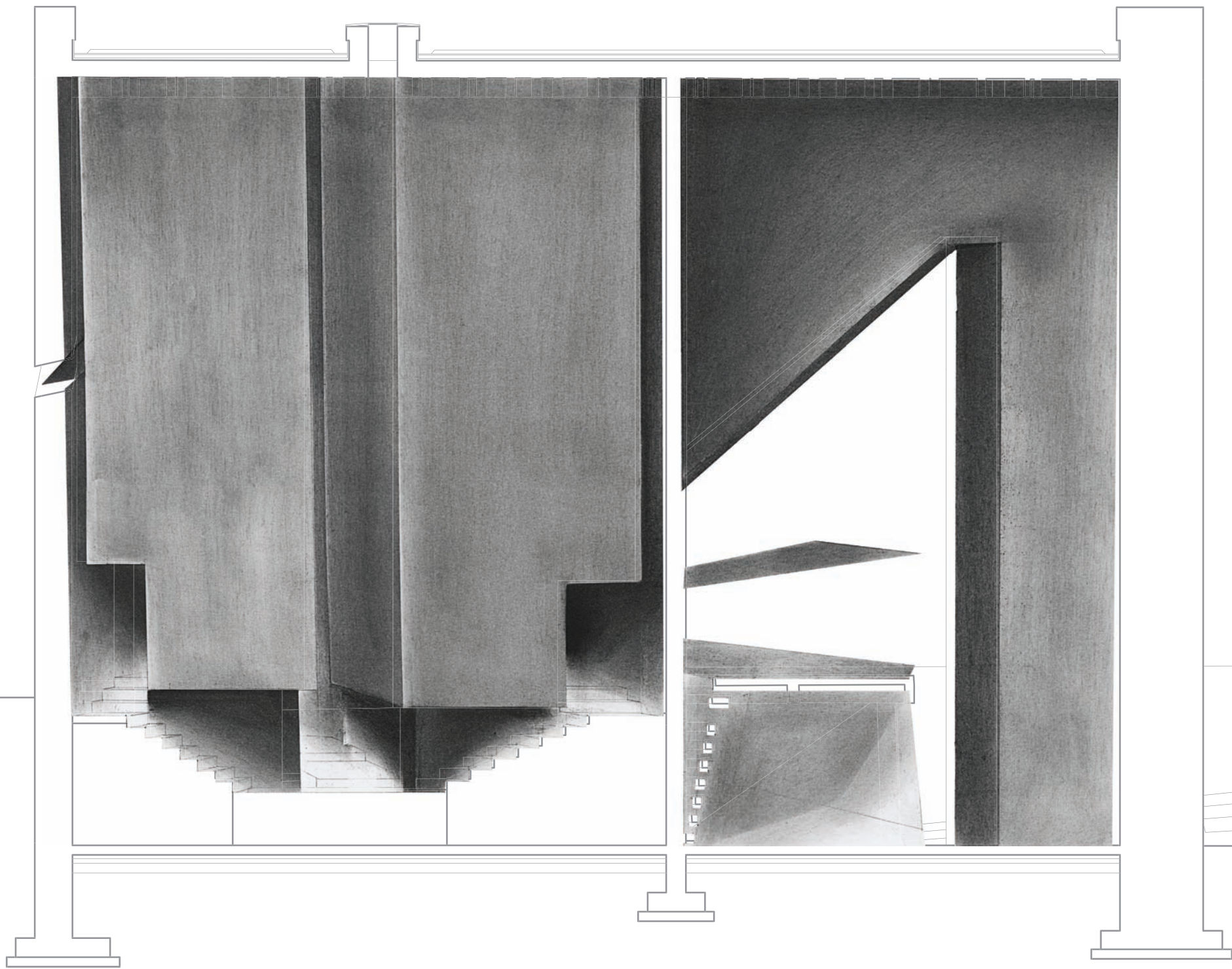
-1

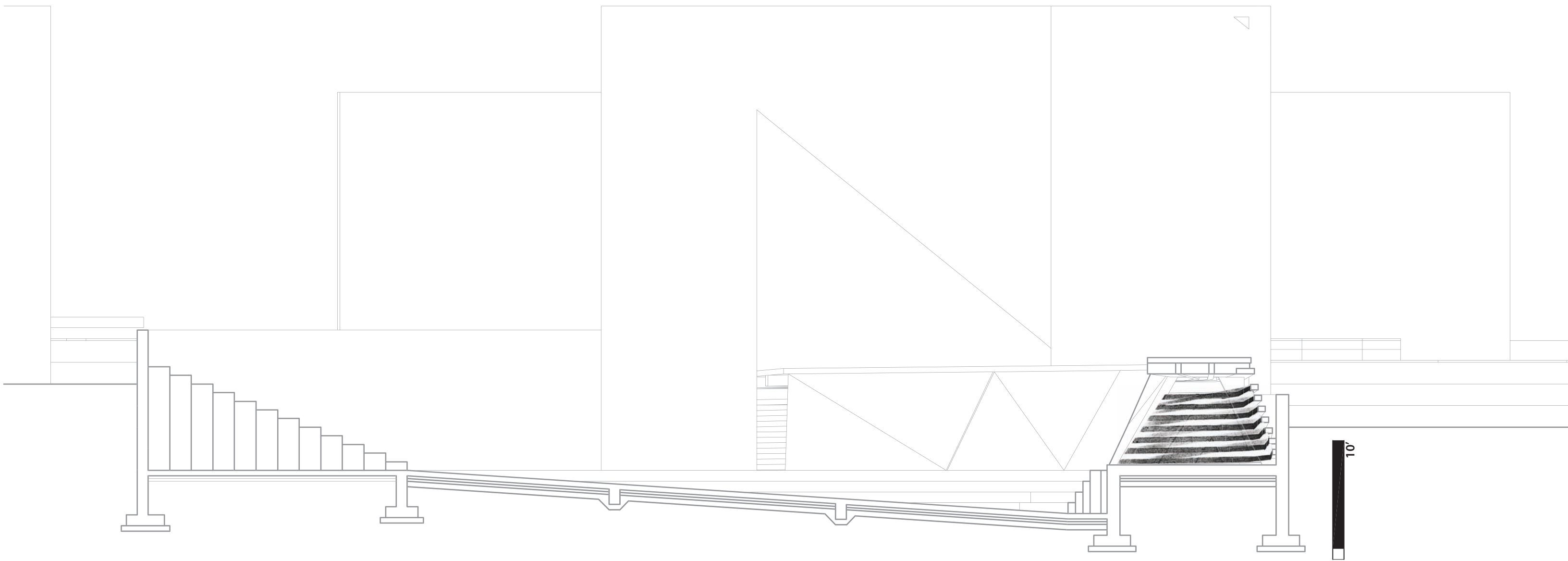
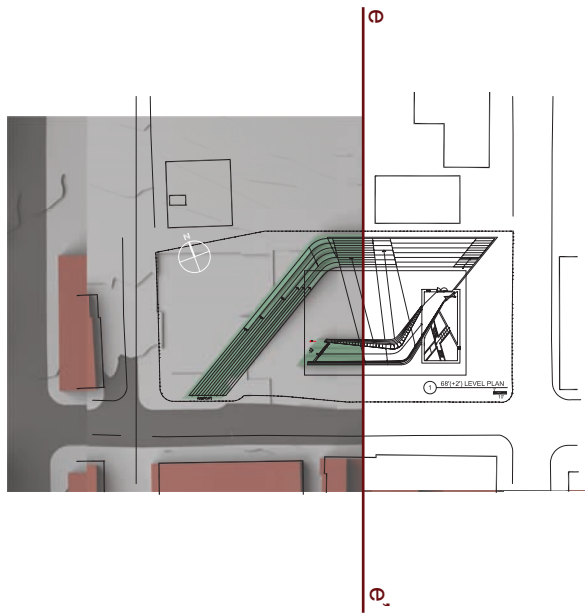
1'
10'



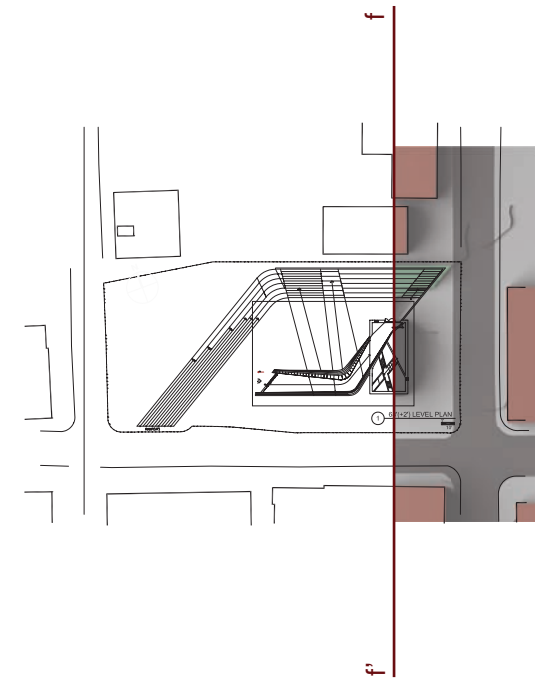
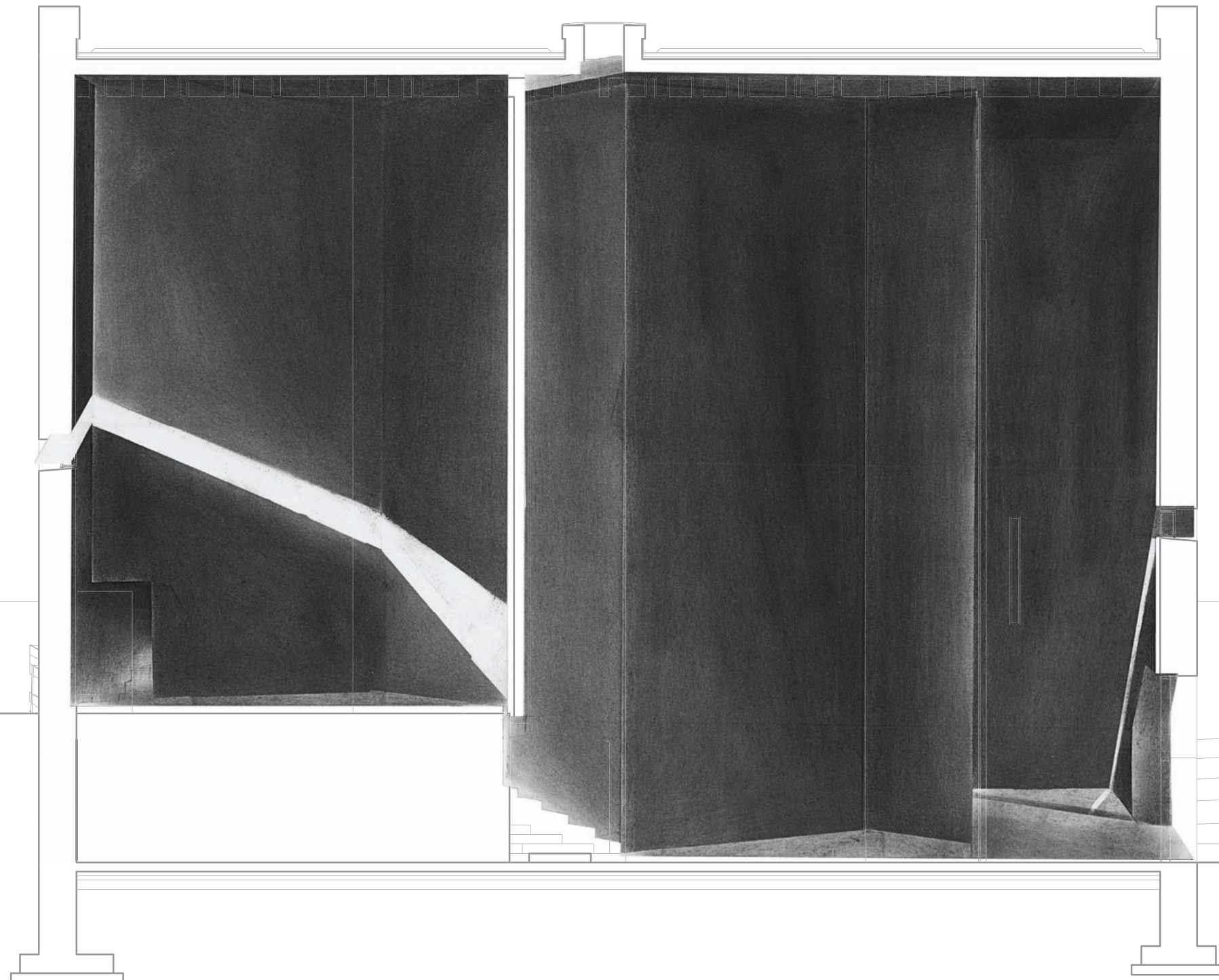


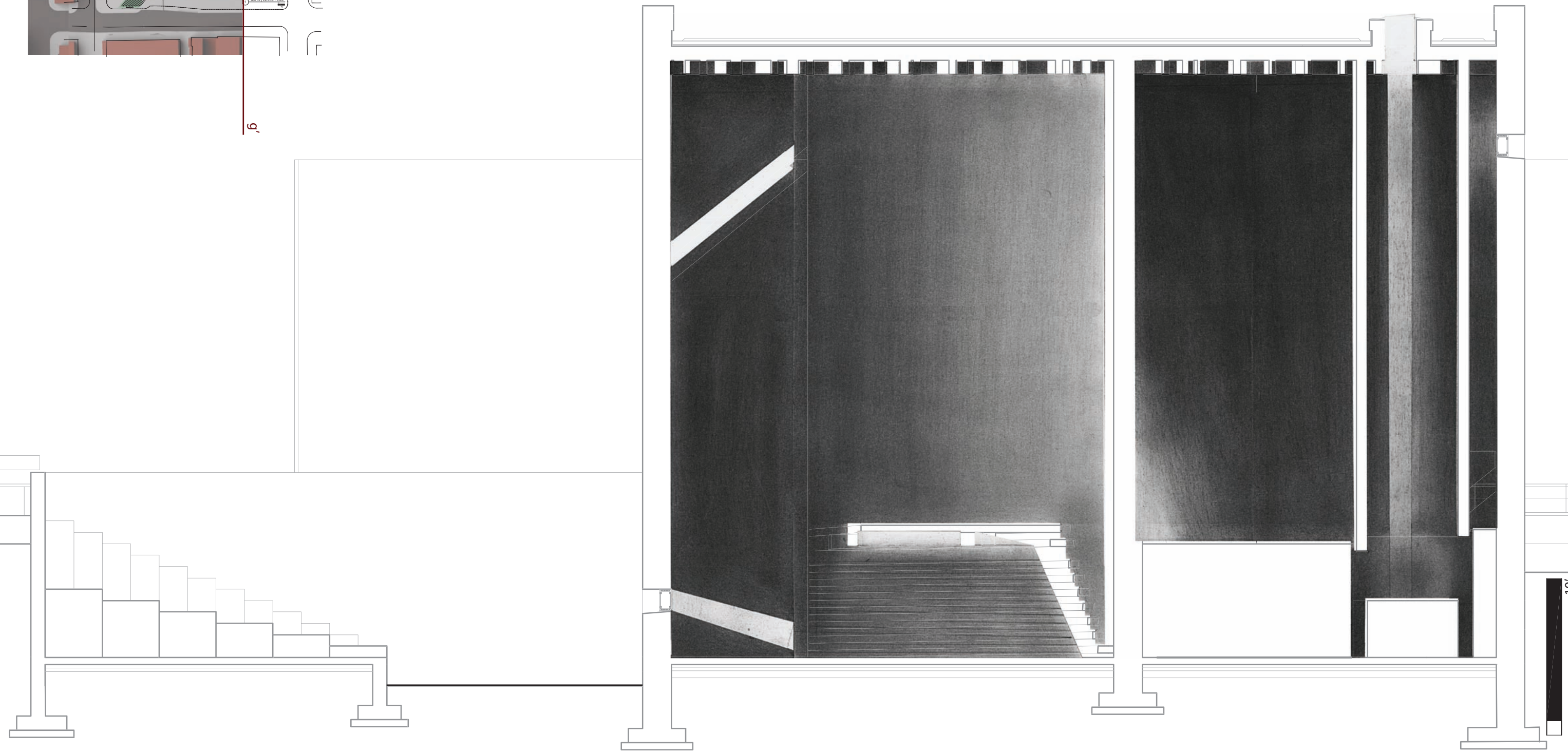
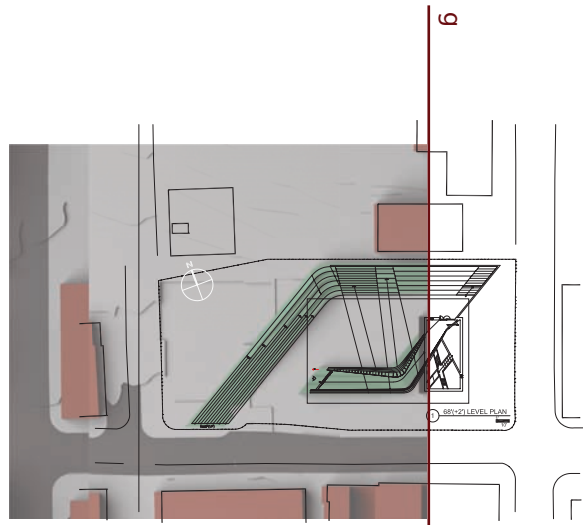




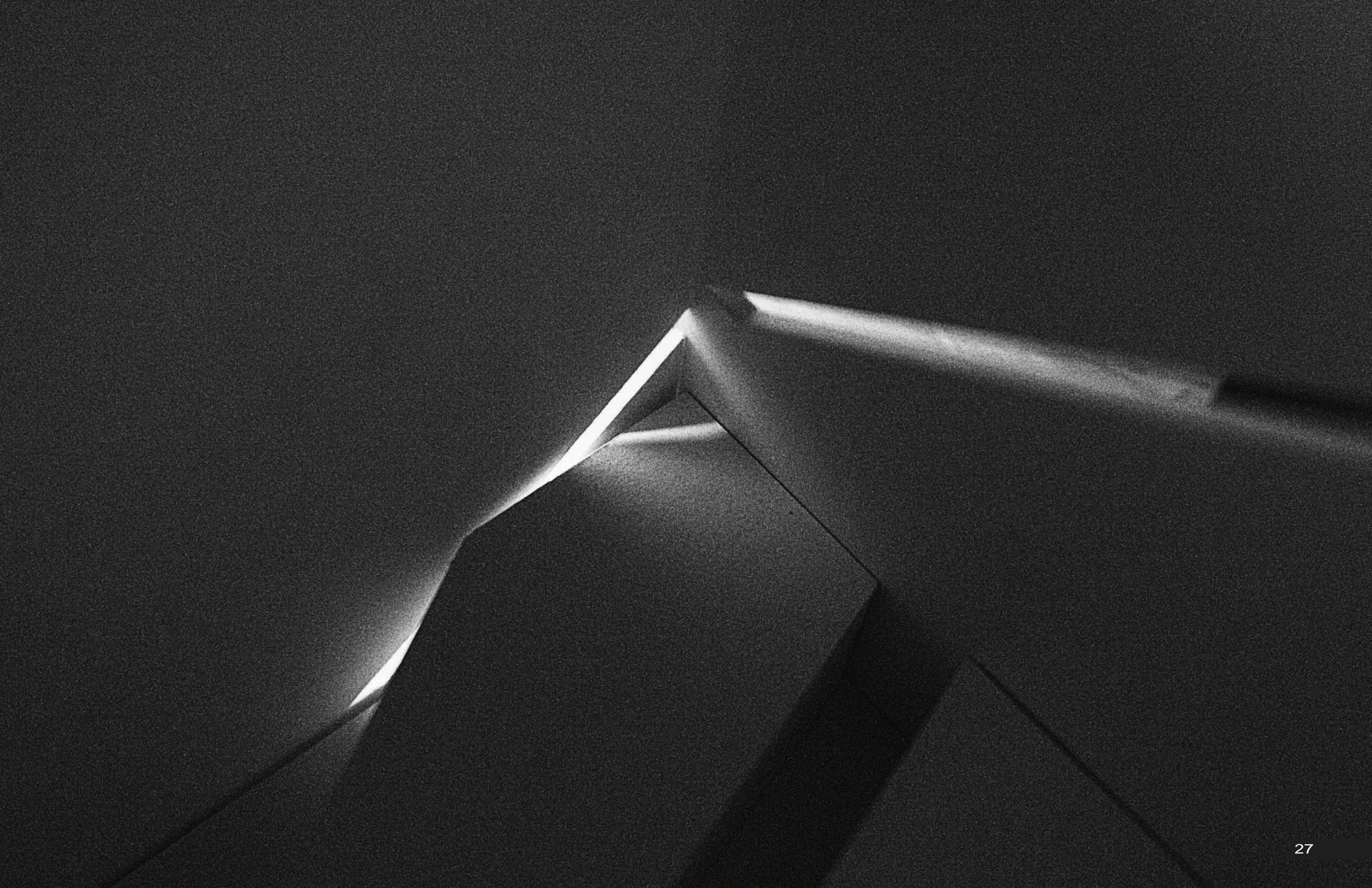


10'











Works sited - Photo credits & Illustrations- All images and contents by the author