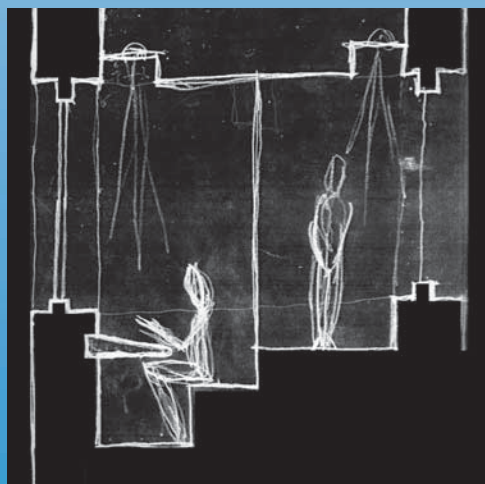
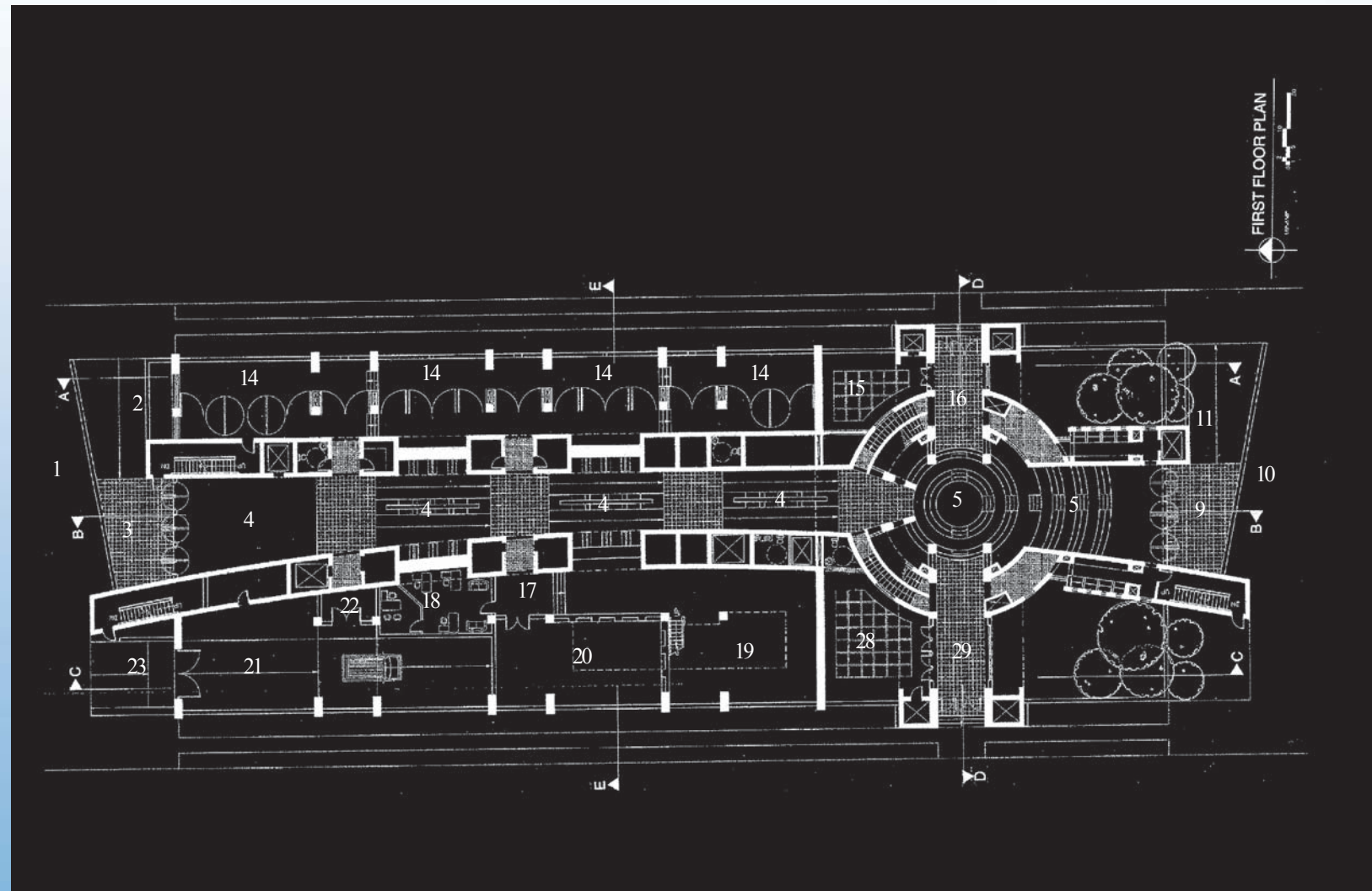


First Floor Plan
Key

- 1 North Ramp - Arrival
- 2 North Plaza - Arrival
- 3 North Vestibule - Arrival
- 4 Gallery Hall "Main Street"
- 5 Meditation Chapel
- 6 Garden Promenade
- 9 South Vestibule-Departure
- 10 South Plaza-Departure
- 11 South Ramp - Departure
- 14 Art Gallery
- 15 East Courtyard
- 16 East Entry Vestibule
- 17 Health Club Foyer
- 18 Building Maintenance
- 19 Health Club
- 20 Aerobics Room
- 21 Garage Ramp
- 22 Resident Drop-Off
- 23 Garage Entrance
- 28 West Courtyard
- 29 West Entry Vestibule



Process Sketch: Section through Prayer Hall

Soul – The Meditation Chapel

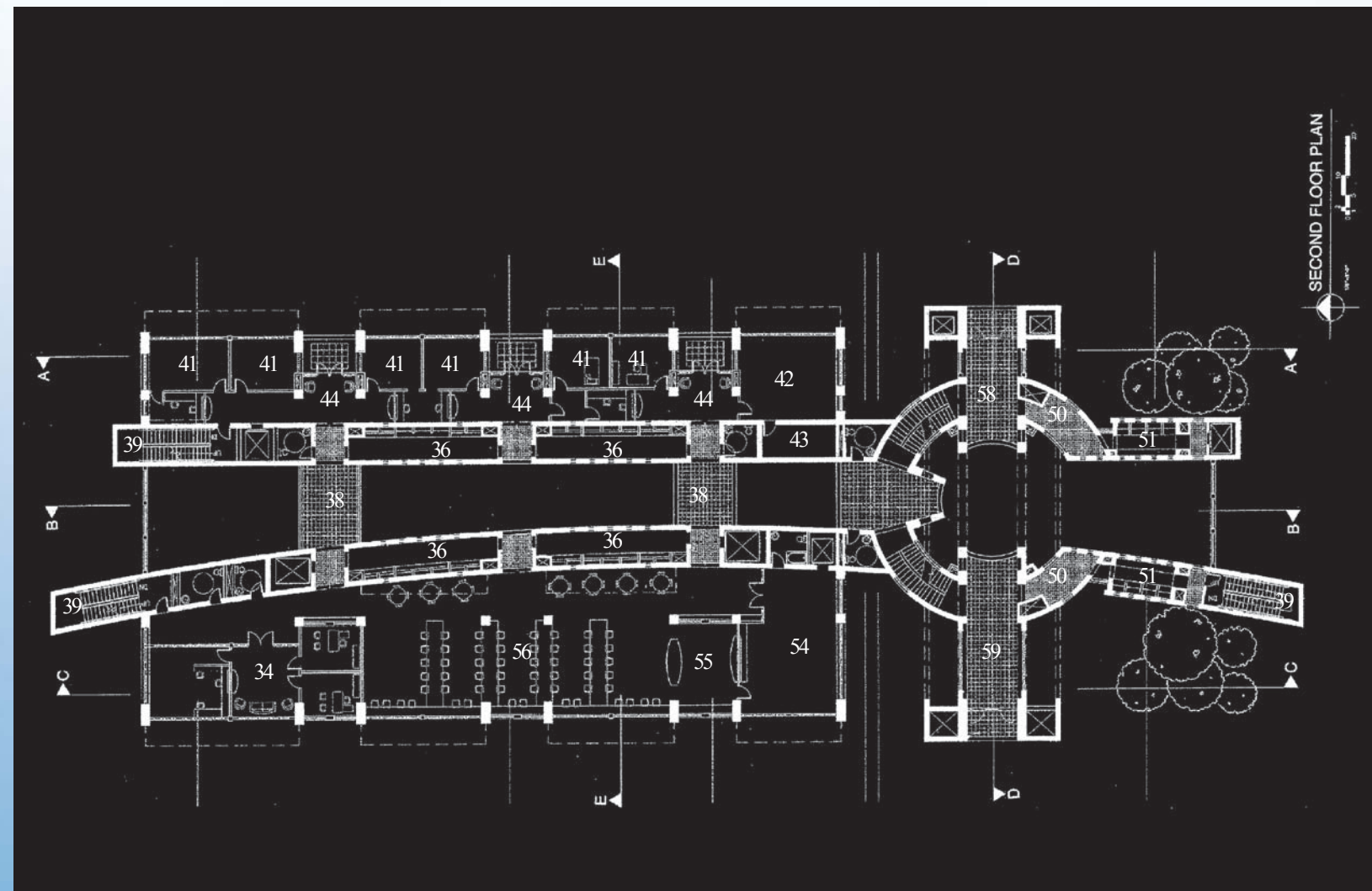
The heart of the Holistic Center is the Meditation Chapel. The Meditation Chapel sits at the hinge of the entire complex. The Library Halls, Prayer Halls and the Quilt Walls, as the spine and skull elements of form, all combine to create this three dimensionally asymmetrical space. As the major symbolic threshold space of the building, this cylindrical form is the pivot point between the “profane” and “sacred” halves of the Holistic Center.

As per the teachings of Mircea Eliade, “Man becomes aware of the sacred because it manifests itself, shows itself, as something wholly different from the profane”.^{17 (p.11)} The Meditation Chapel is clearly a sacred space. In this space the profane nature of the everyday world is set aside and one’s mind is turned to the spiritual side of human nature. For this reason, the Prayer Halls and the Quilt Walls are sacred spaces as well. These three spaces create the sacred wing of the Holistic Center and the spiritual home of its residents. The residence and research wings of the Center represent the profane. The goal of most spiritual leaders is to slowly work the sacred into the everyday profane lives of their flock.

The Chapel is the most sacred space within the Center’s complex and it sits at the terminus of the Great Hall space. Like the Great Hall, the Chapel is a monumental space stretching seven stories toward the sky and terminating with a series of skylights at the roof line. Together these two spaces create a datum symbolizing the journey of each person down life’s path toward death and a new beginning in the afterlife.

Second Floor Plan
Key

- 36 Library Hall/Reading Carrels
- 38 Great Hall Bridge
- 39 Egress Stairs
- 40 Public Toilet
- 41 Day Spa
- 42 Hair Studio
- 43 Storage
- 44 Reception/Waiting
- 45 Doctor/Clinic Office
- 46 Exam/Treatment Room
- 47 Research Wing Balcony
- 50 Prayer Vestibule
- 51 Meditation Hall/Prayer Carrels
- 53 Day Spa Office
- 54 Kitchen
- 55 Buffet
- 56 Dining Hall
- 57 Resident Services
- 58 East Promenade
- 59 West Promenade



Process sketch: Section through Library Hall

Daily interdenominational services at sunrise and sunset are performed at the center of the Chapel space. Amphitheater seating steps steeply up toward the South Gate or Memorial Gate. Space around the center podium is provided for residents in wheelchairs and gurneys.

Funeral services for every resident will be held in the Meditation Chapel. One's journey to the next world will literally and symbolically begin within this threshold space. The Memorial Gate is only used, for departure, on the day of a resident's funeral. It is opened at the end of the funeral as the casket and mourners leave the building. The Gate symbolizes final earthly departure, but also arrival in the afterlife. As a threshold space, the Meditation Chapel represents the celebration of death that I have attempted to achieve through this thesis project.