

Figure 5.1 – New Coordinate System for Breakwater Showing Incident
Wave Direction β

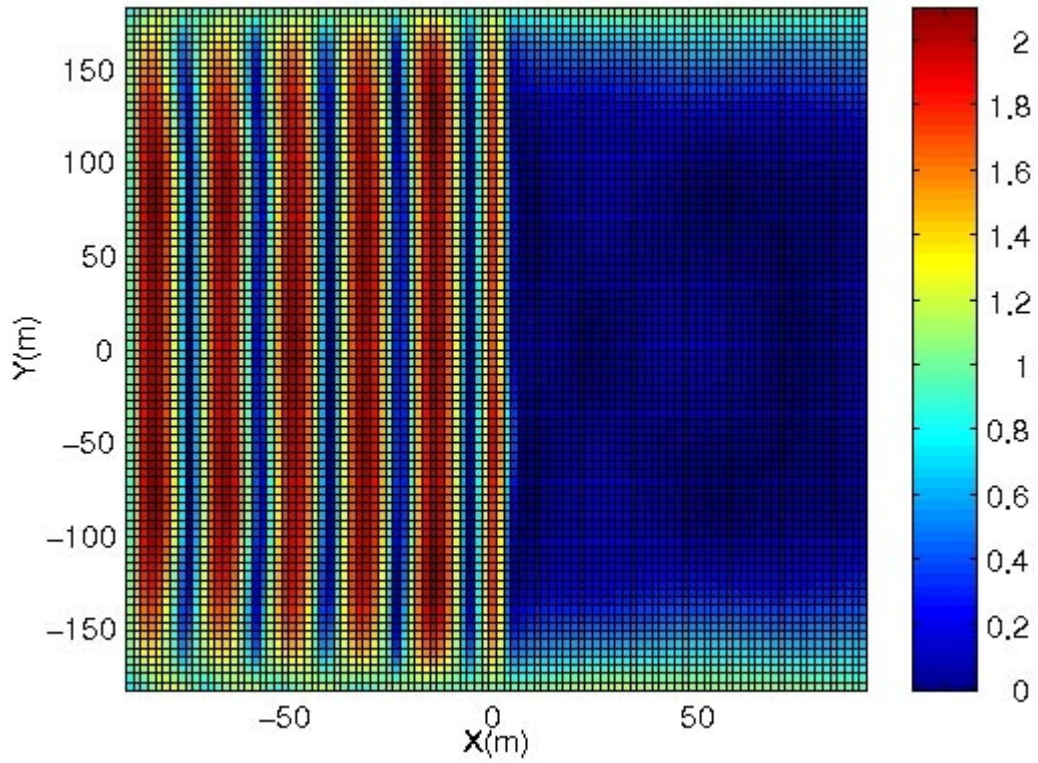


Figure 5.2 – Amplitude of Free Surface Elevation for $\omega=\omega_n=1.25$ rad/s
(304.8 m Breakwater, $\beta=0^\circ$)

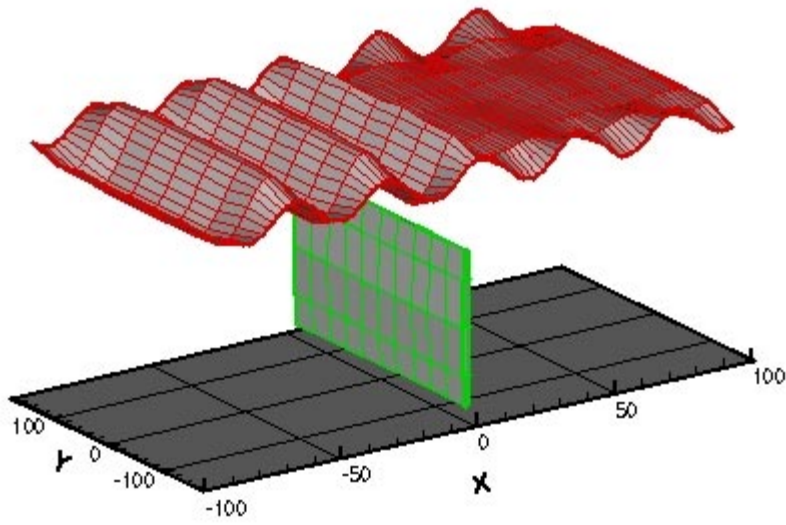


Figure 5.3 (a) - Free Surface Elevation for $\omega=\omega_n=1.25$ rad/s
(304.8 m Breakwater, $\beta=0^\circ$, $t=0$)

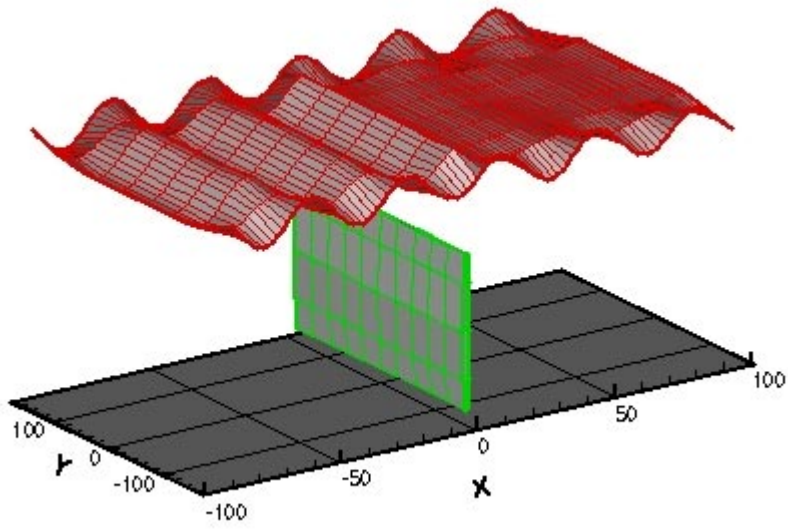


Figure 5.3 (b) - Free Surface Elevation for $\omega=\omega_n=1.25$ rad/s
(304.8 m Breakwater, $\beta=0^\circ$, $t=0.2T$)

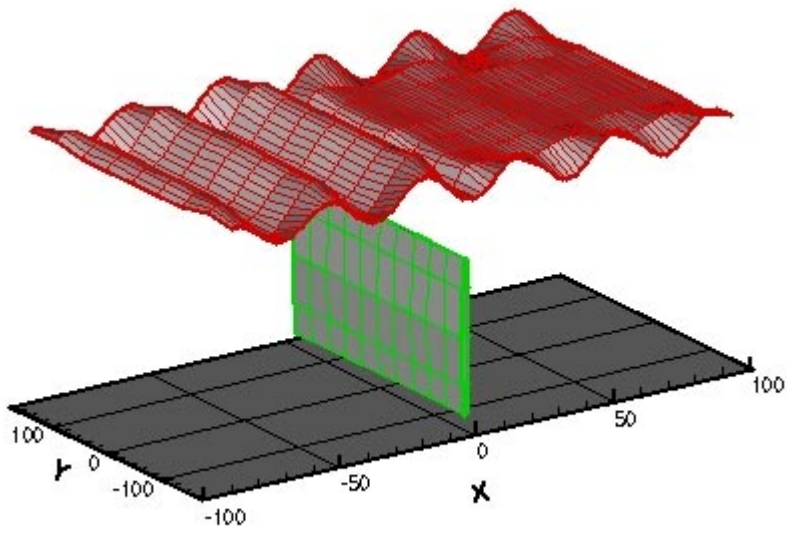


Figure 5.3 (c) - Free Surface Elevation for $\omega=\omega_n=1.25$ rad/s
(304.8 m Breakwater, $\beta=0^\circ$, $t=0.4T$)

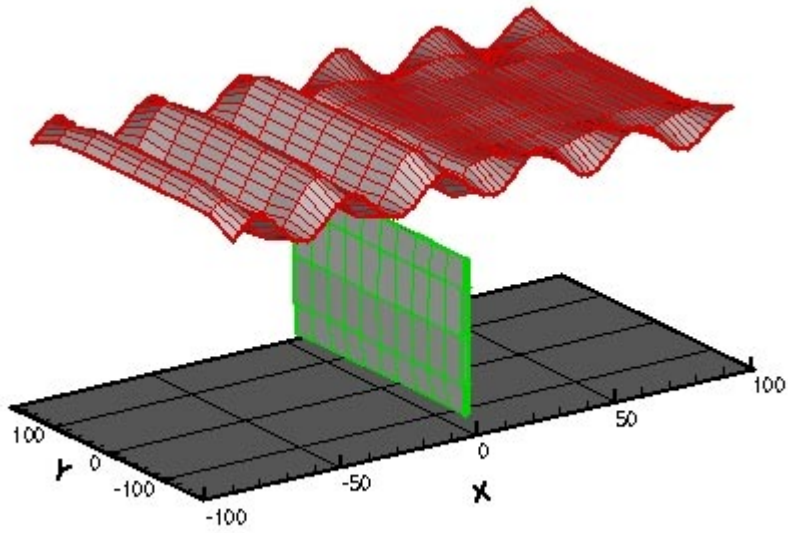


Figure 5.3 (d) - Free Surface Elevation for $\omega=\omega_n=1.25$ rad/s
(304.8 m Breakwater, $\beta=0^\circ$, $t=0.6T$)

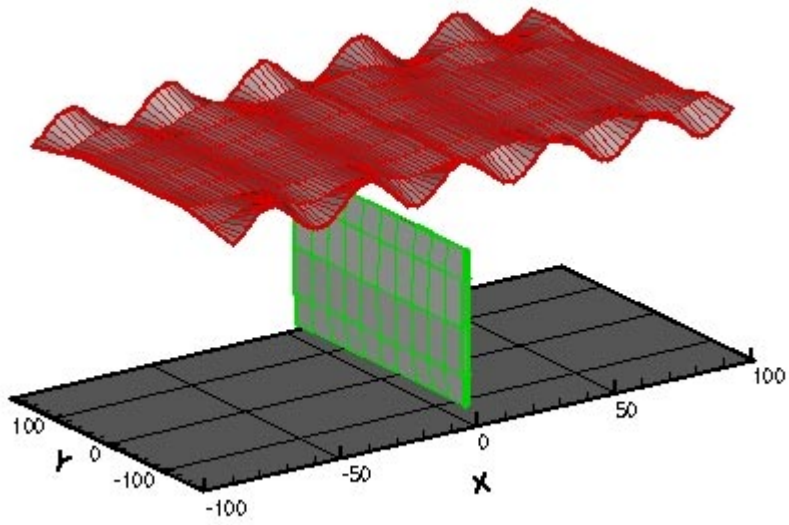


Figure 5.3 (e) - Free Surface Elevation for $\omega=\omega_n=1.25$ rad/s
(304.8 m Breakwater, $\beta=0^\circ$, $t=0.8T$)

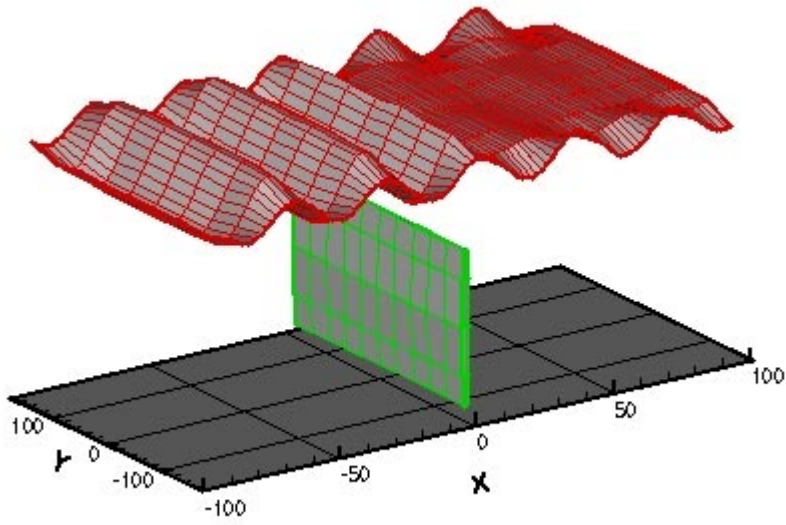


Figure 5.3 (f) - Free Surface Elevation for $\omega=\omega_n=1.25$ rad/s
(304.8 m Breakwater, $\beta=0^\circ$, $t=1.0T$)