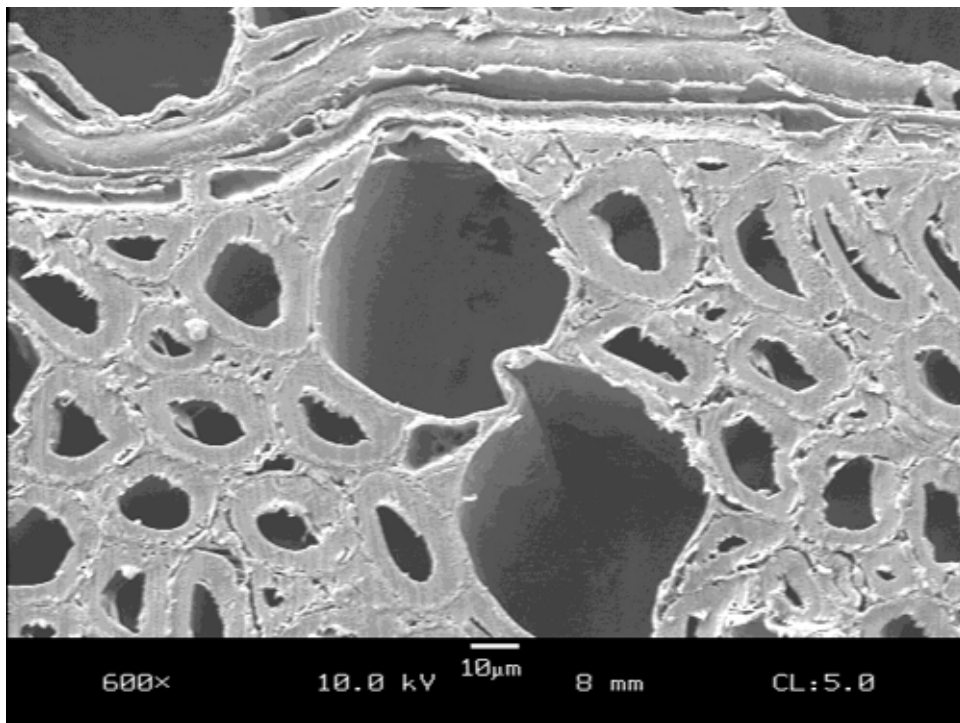
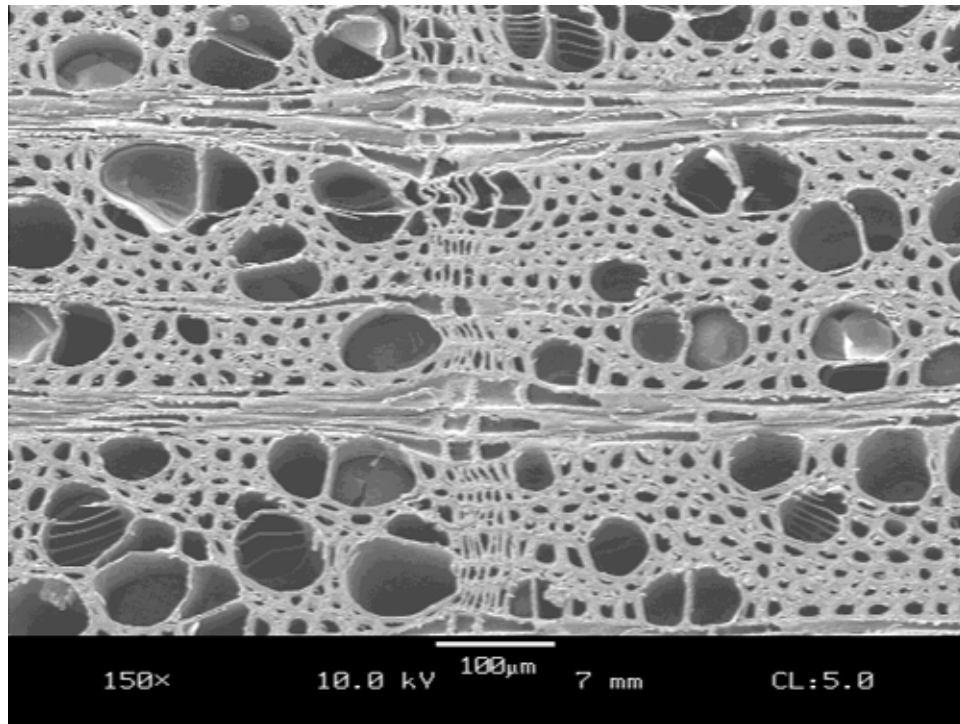


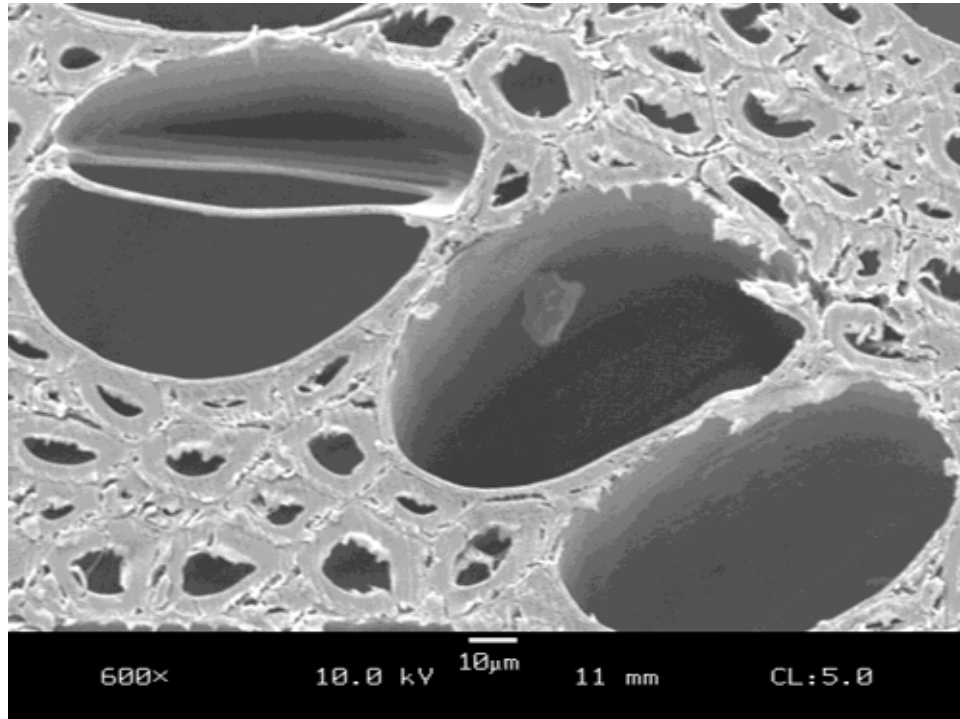
**Figure C53.** SEM micrograph of compressed mature yellow-poplar (4mm), TRT3, showing multiple fractures in the cell walls.



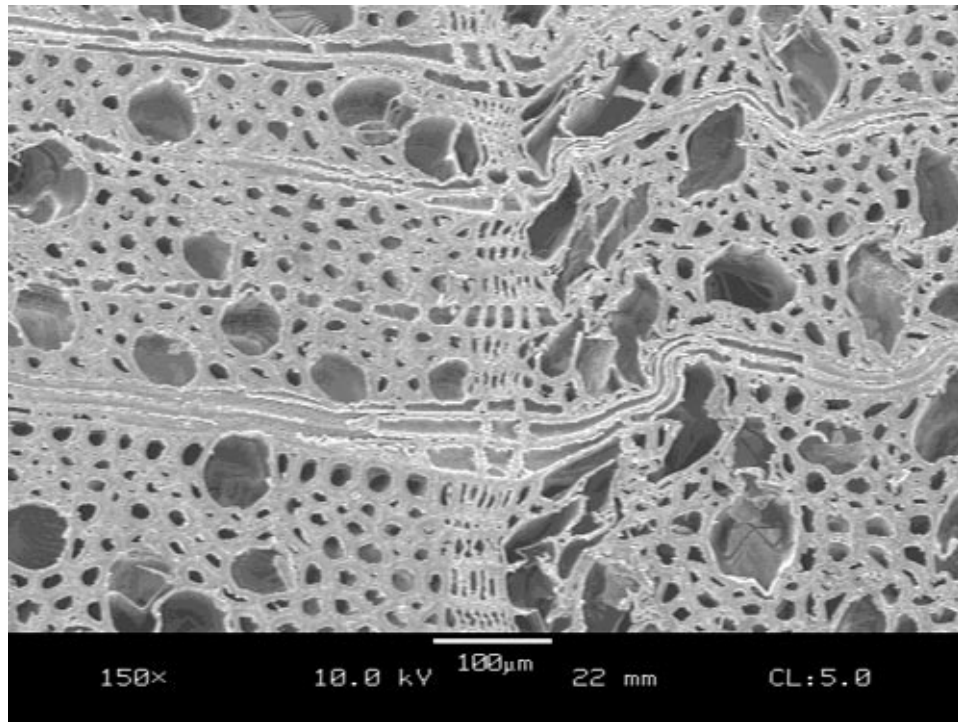
**Figure C54.** SEM micrograph of compressed mature yellow-poplar (4mm), TRT3.



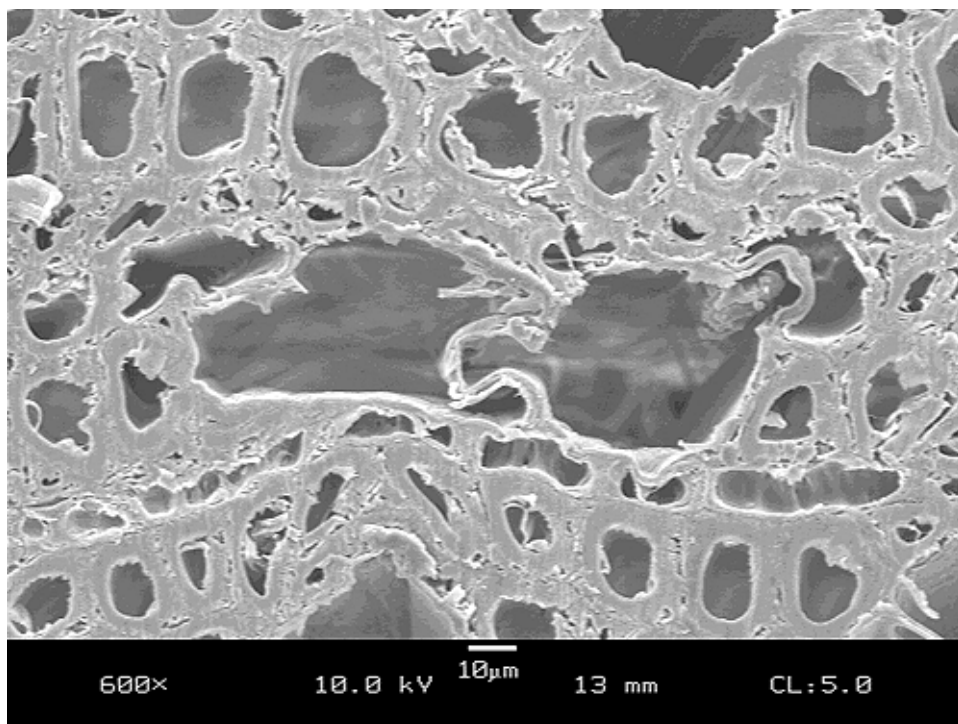
**Figure C55.** SEM micrograph of uncompressed mature yellow-poplar (4mm), TRT3.



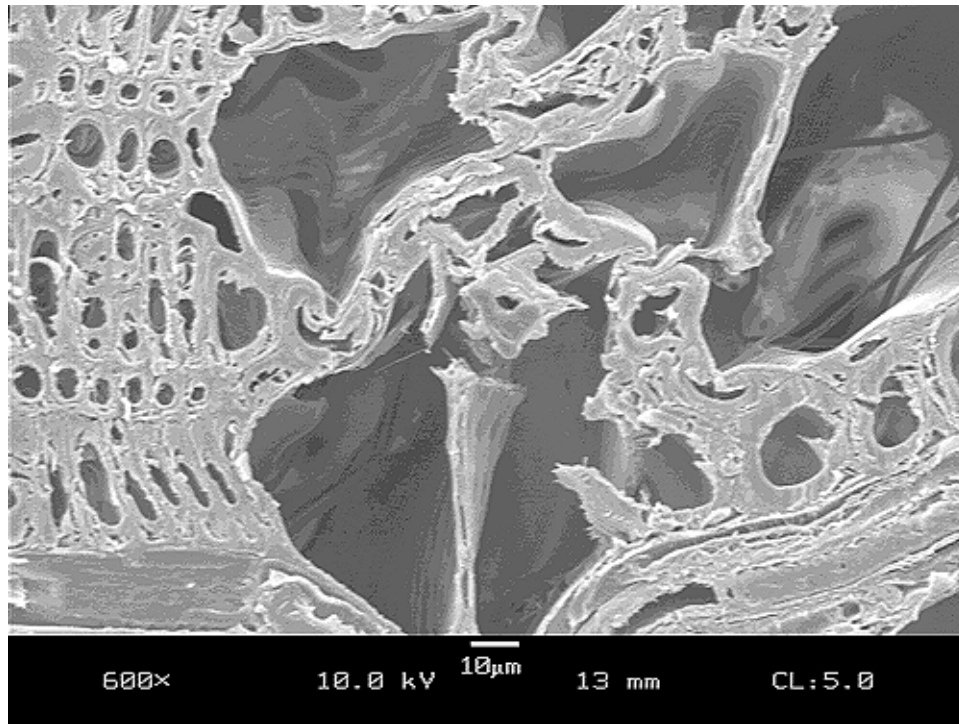
**Figure C56.** SEM micrograph of uncompressed mature yellow-poplar (4mm), TRT3.



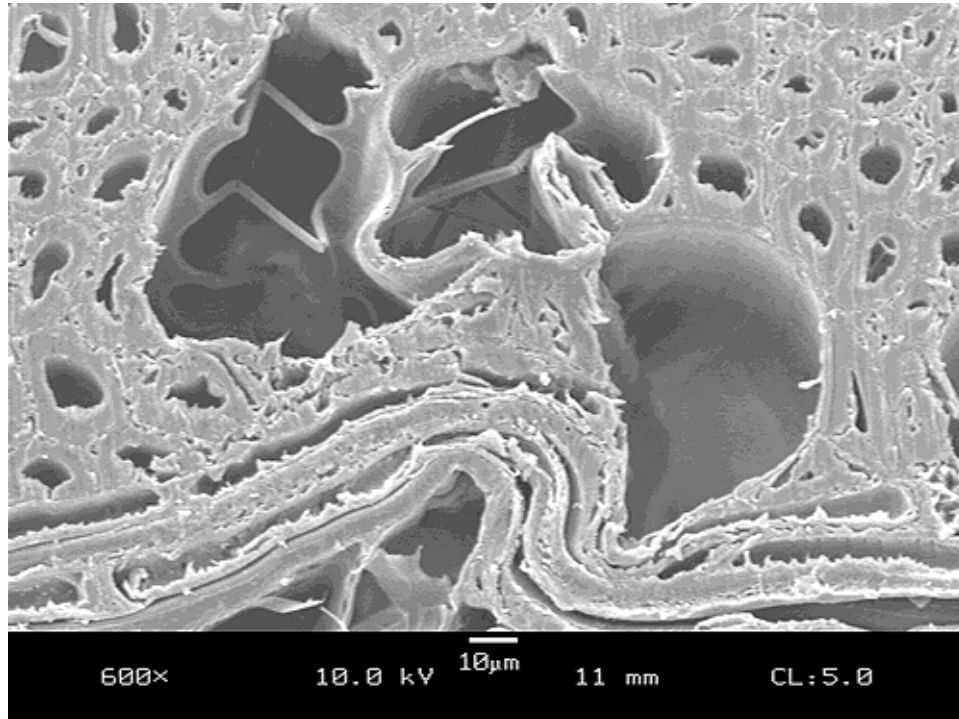
**Figure C57.** SEM micrograph of compressed mature yellow-poplar (3mm), TRT1.



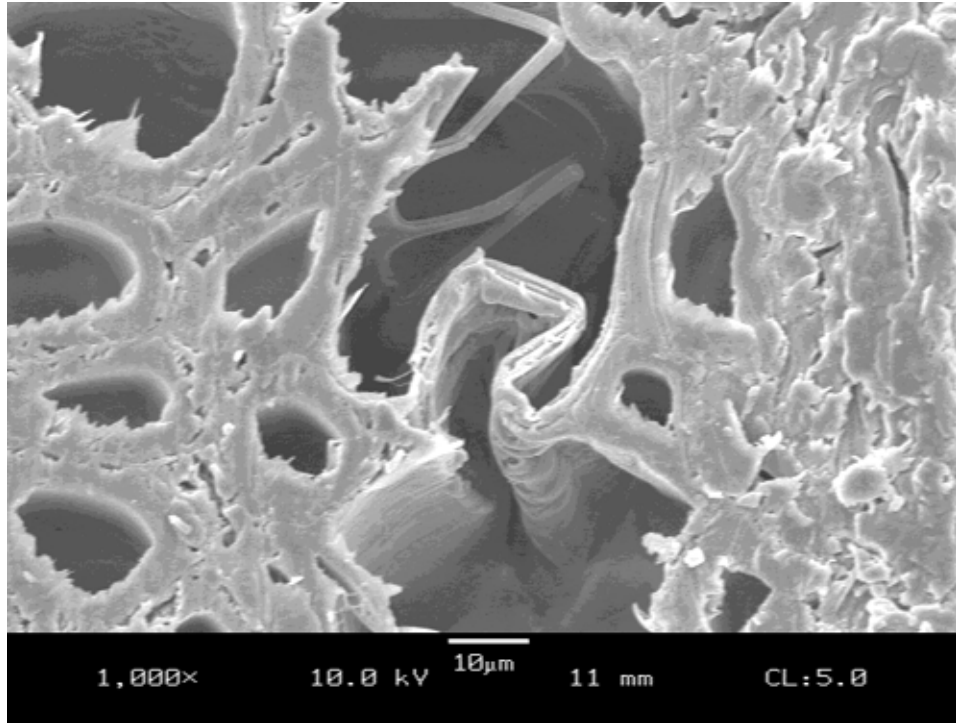
**Figure C58.** SEM micrograph of compressed mature yellow-poplar (3mm), TRT1.



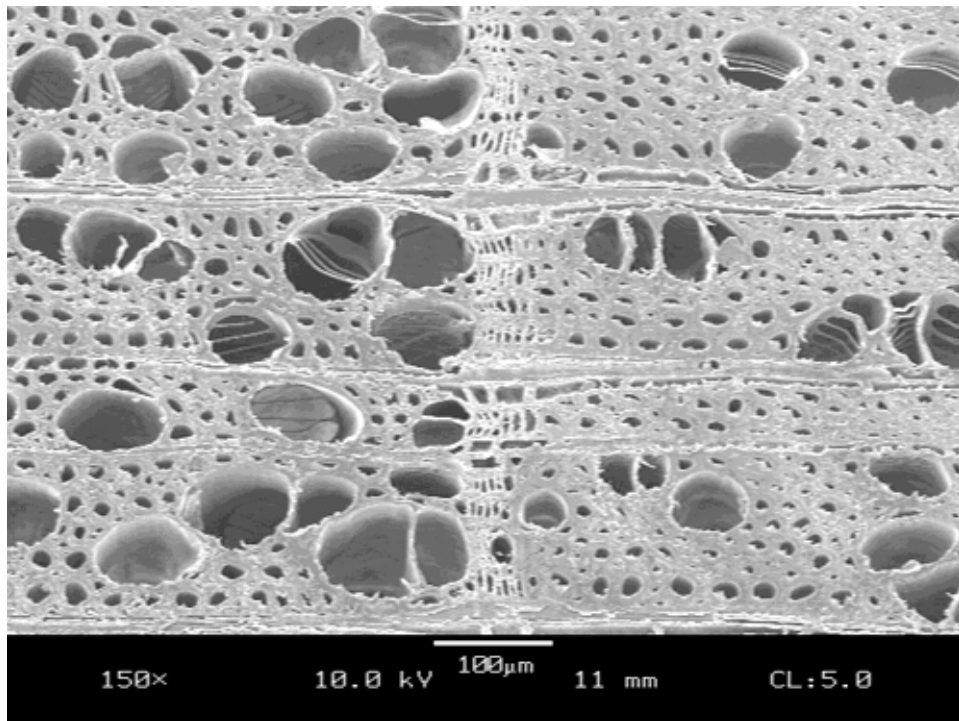
**Figure C59.** SEM micrograph of compressed mature yellow-poplar (3mm), TRT1, showing brittle fractures in the cell walls.



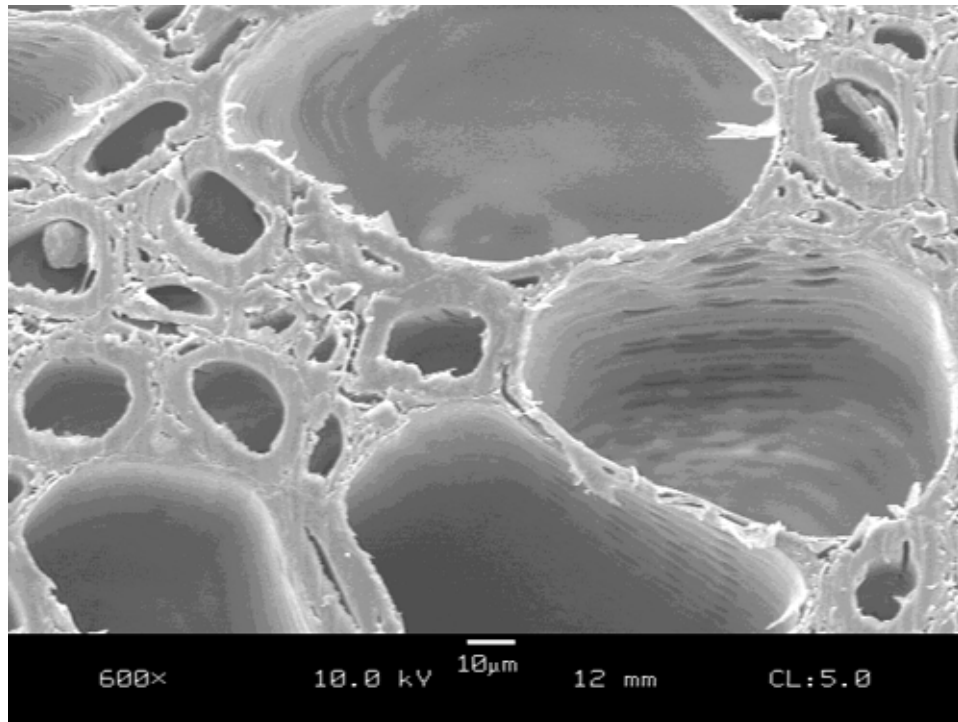
**Figure C60.** SEM micrograph of compressed mature yellow-poplar (3mm), TRT1, showing buckling of the ray and elastic collapse of the vessel walls.



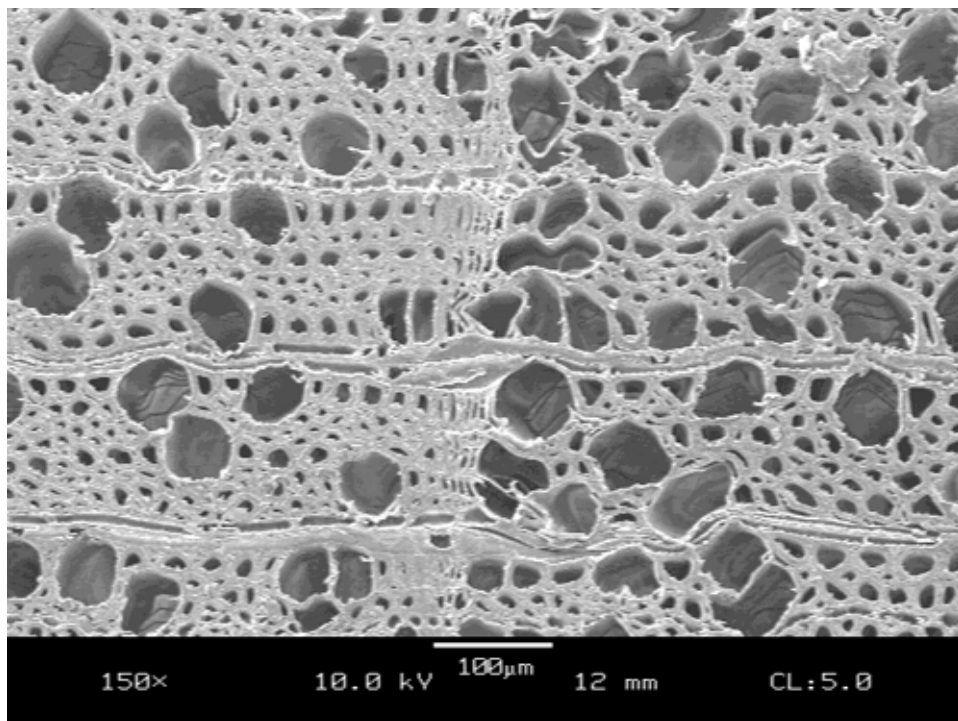
**Figure C61.** SEM micrograph of compressed mature yellow-poplar (3mm), TRT1.



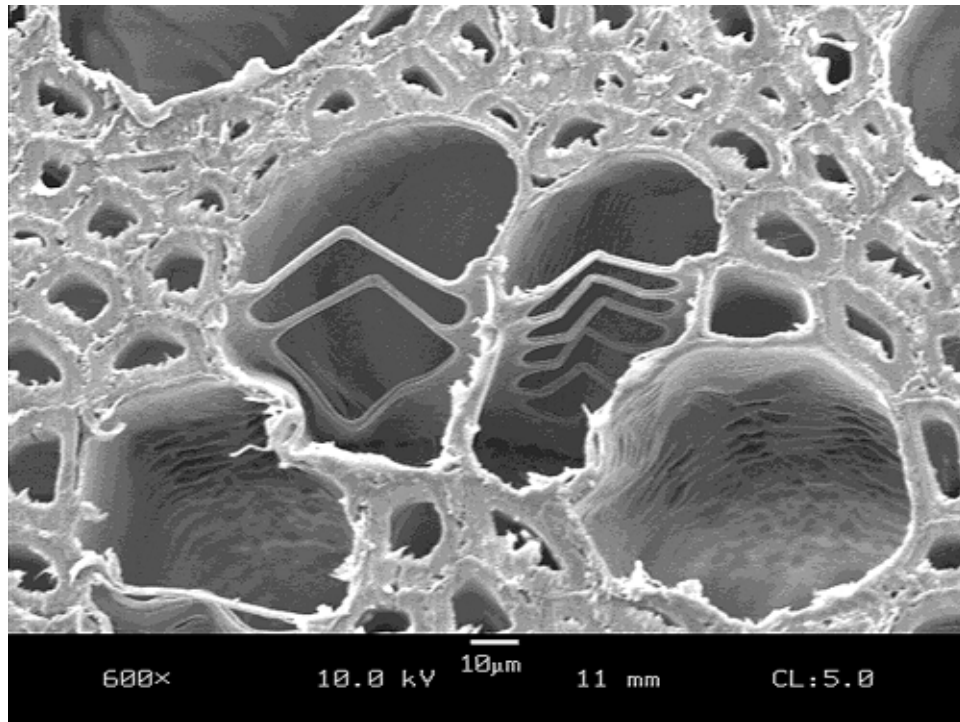
**Figure C62.** SEM image of uncompressed mature yellow-poplar (3mm), TRT1.



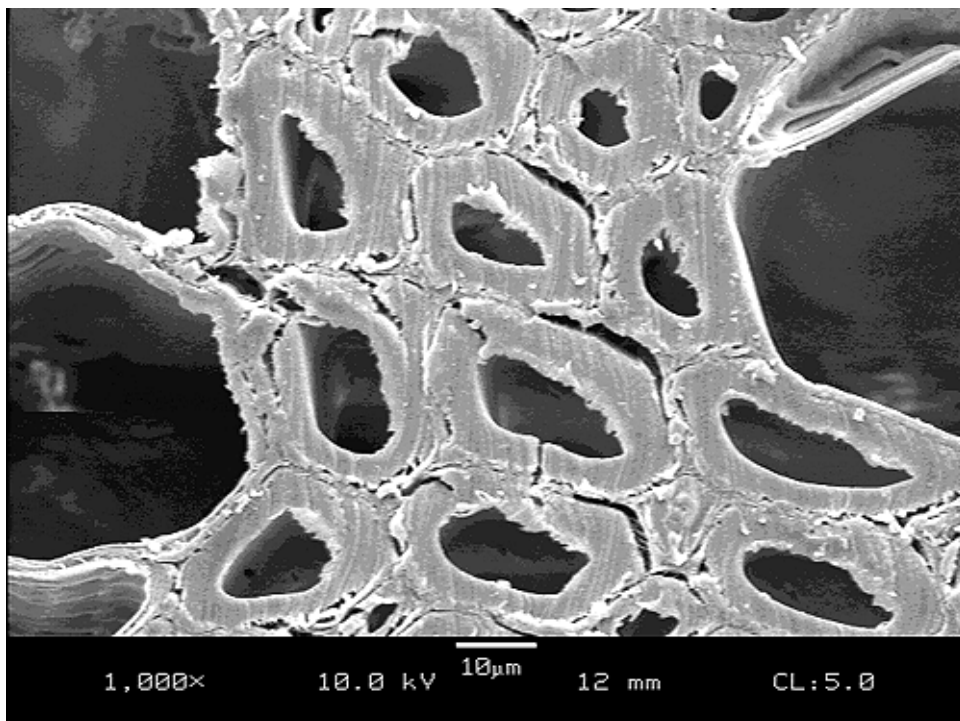
**Figure C63.** SEM micrograph of uncompressed mature yellow-poplar (3mm), TRT1.



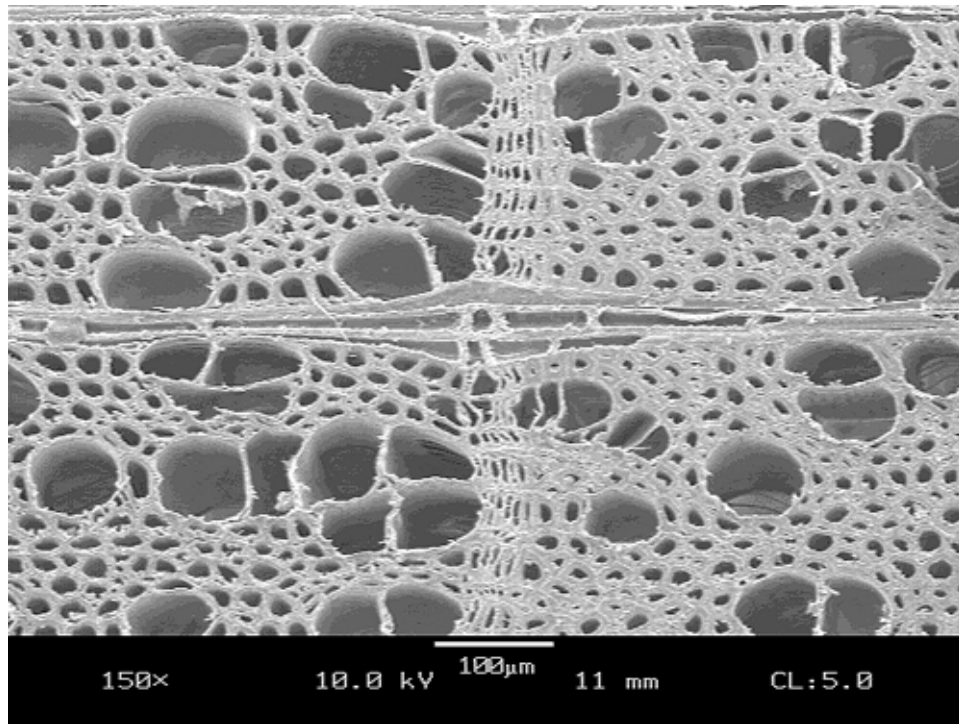
**Figure C64.** SEM micrograph of compressed mature yellow-poplar (3mm), TRT2.



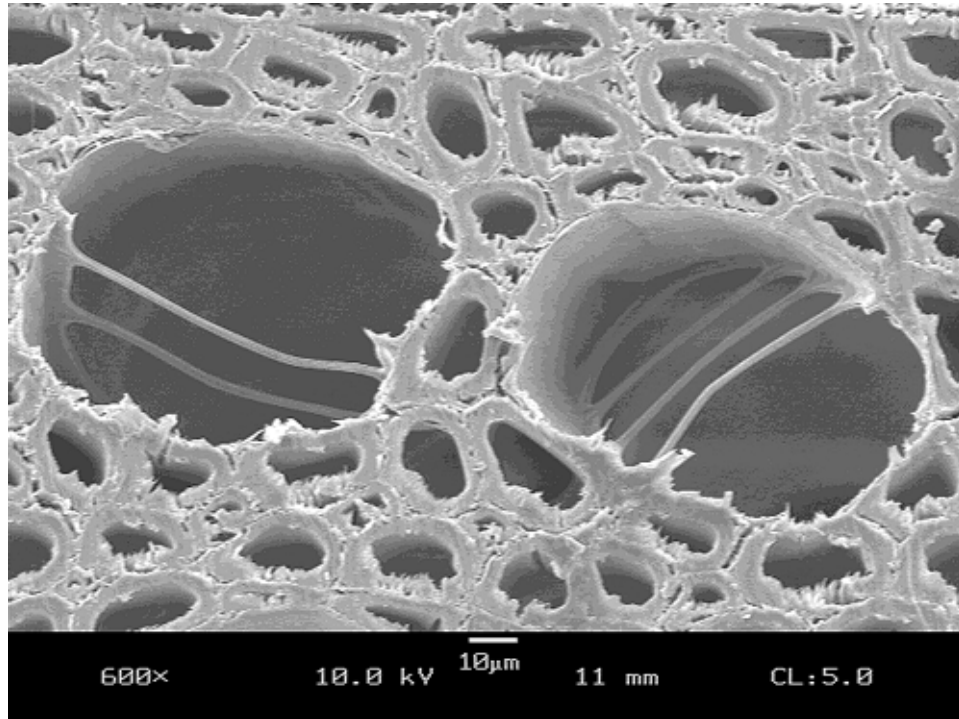
**Figure C65.** SEM micrograph of compressed mature yellow-poplar (3mm), TRT2.



**Figure C66.** SEM micrograph of compressed mature yellow-poplar (3mm), TRT2, showing separation between the fiber tracheids.

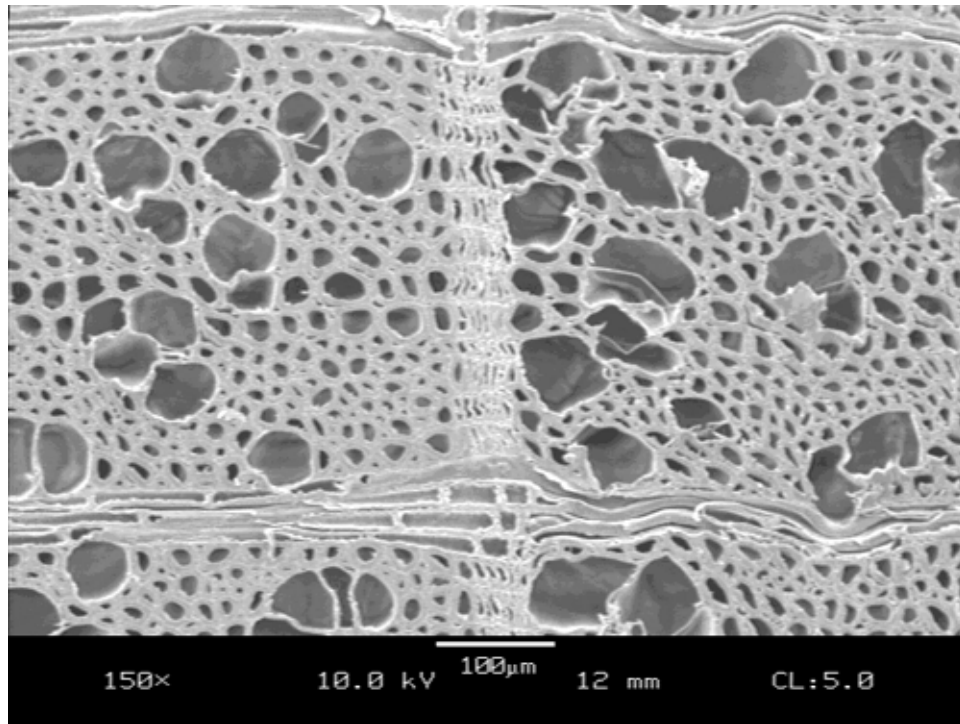


**Figure C67.** SEM micrograph of uncompressed mature yellow-poplar (3mm), TRT2.

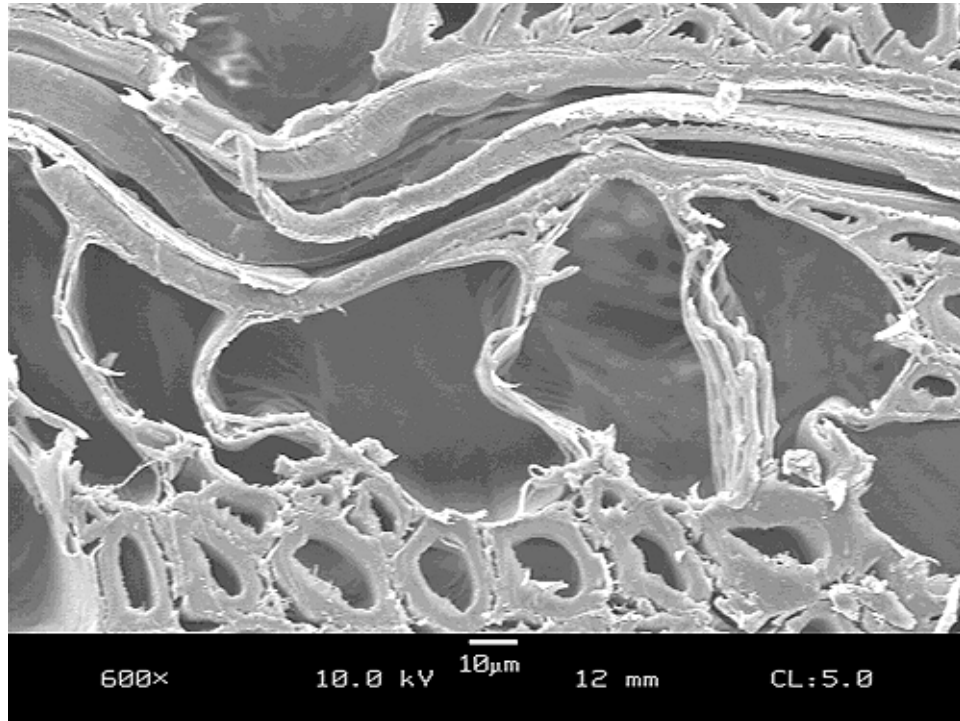


**Figure C68.** SEM micrograph of uncompressed mature yellow-poplar (3mm), TRT2.

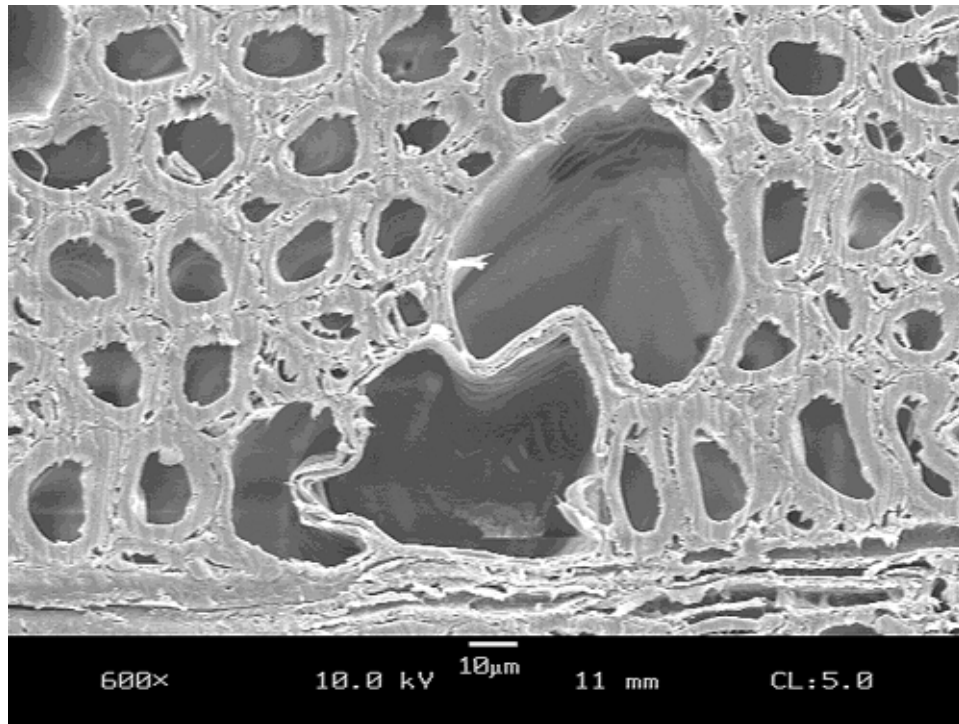




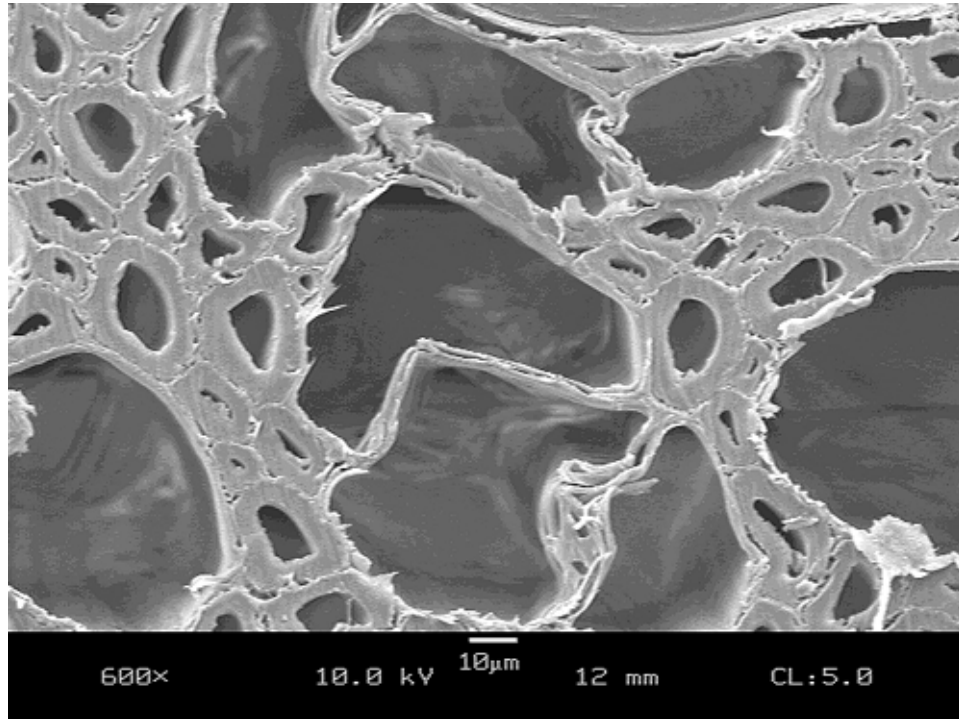
**Figure C69.** SEM micrograph of compressed mature yellow-poplar (3mm), TRT3.



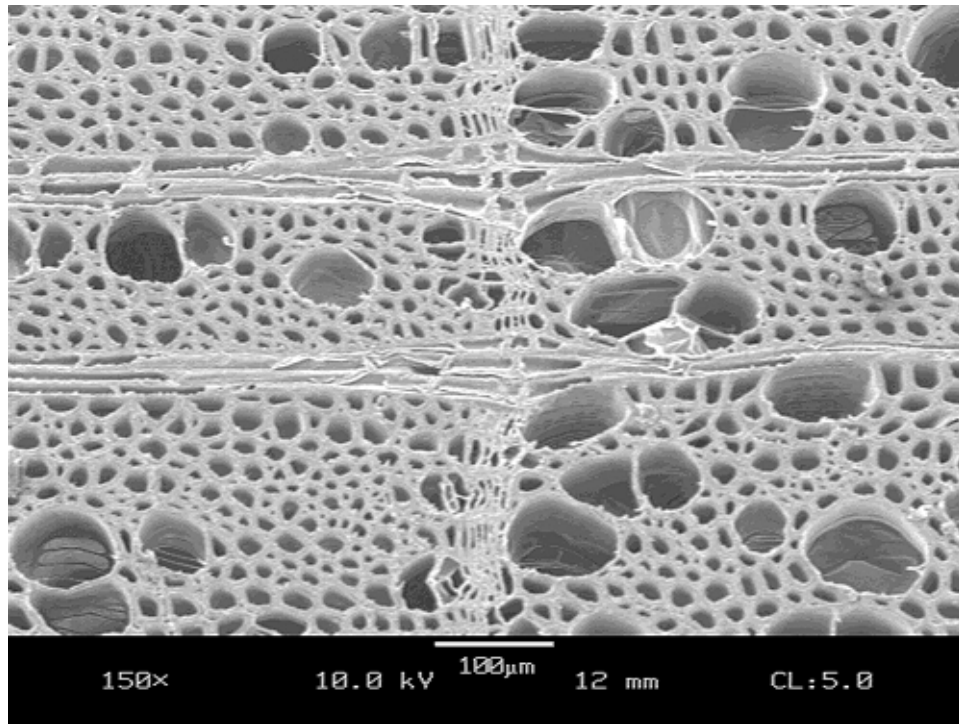
**Figure C70.** SEM micrograph of compressed mature yellow-poplar (3mm), TRT3, showing elastic bending of the ray and the vessel walls.



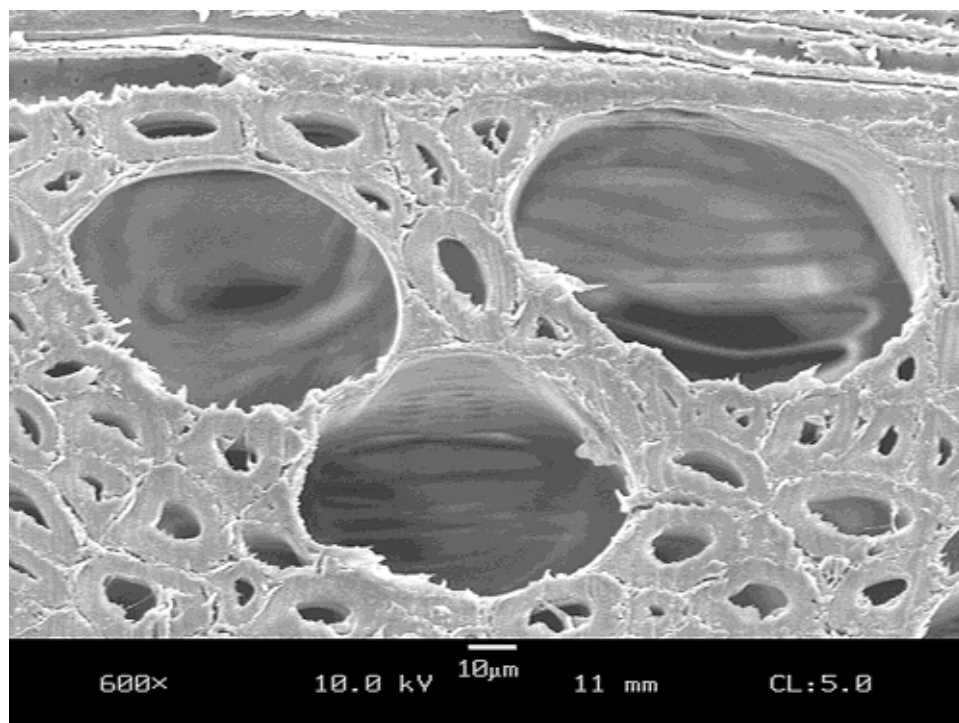
**Figure C71.** SEM micrograph of compressed mature yellow-poplar (3mm), TRT3.



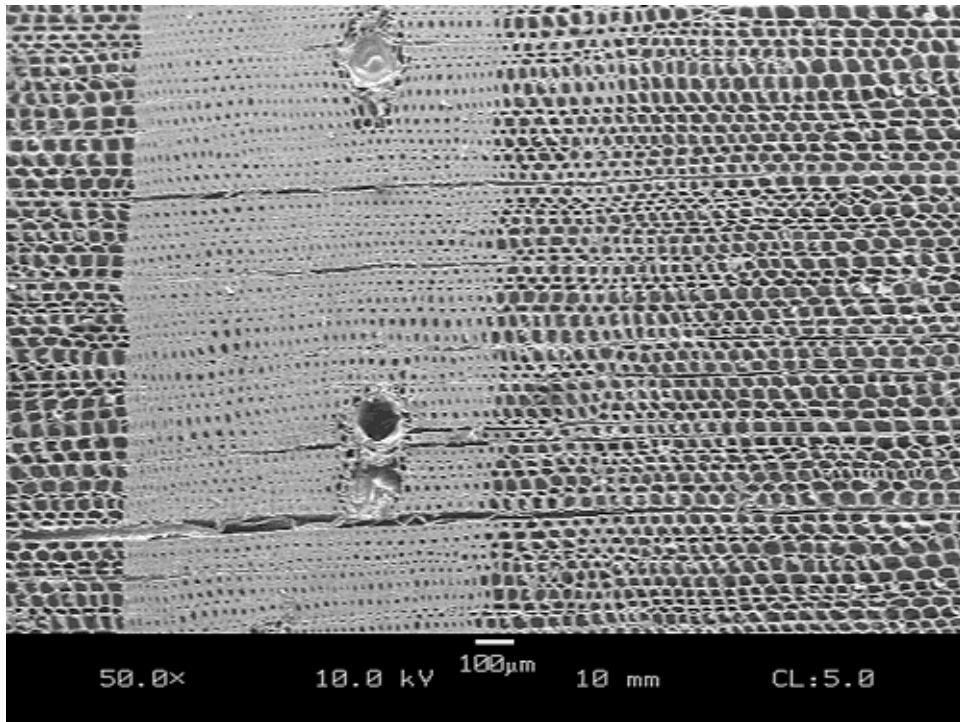
**Figure C72.** SEM micrograph of compressed mature yellow-poplar (3mm), TRT3.



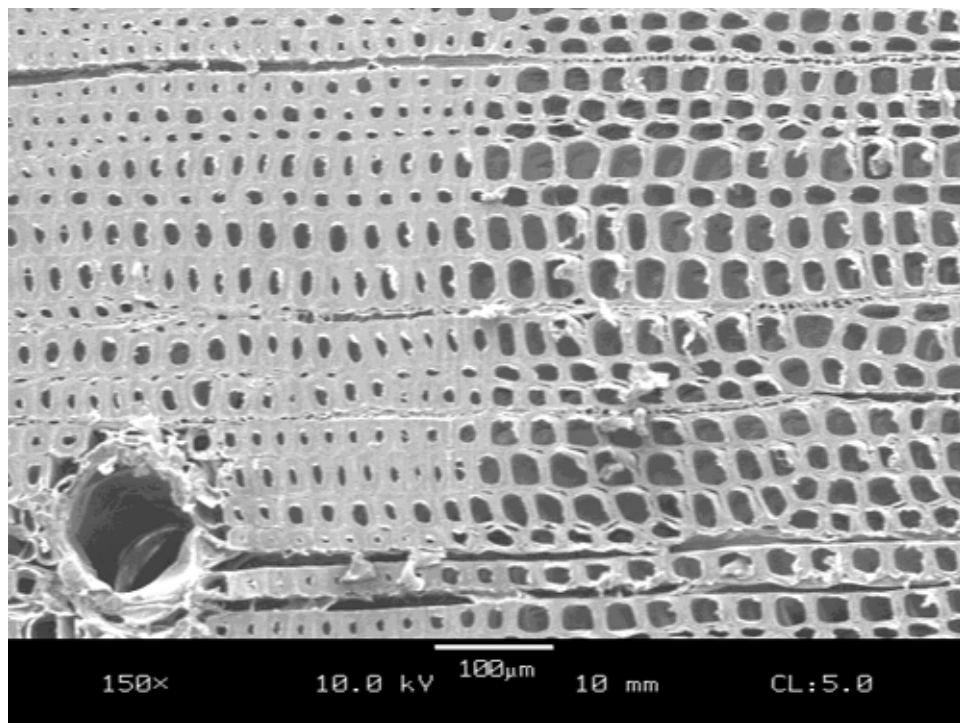
**Figure C73.** SEM micrograph of uncompressed mature yellow-poplar (3mm), TRT3.



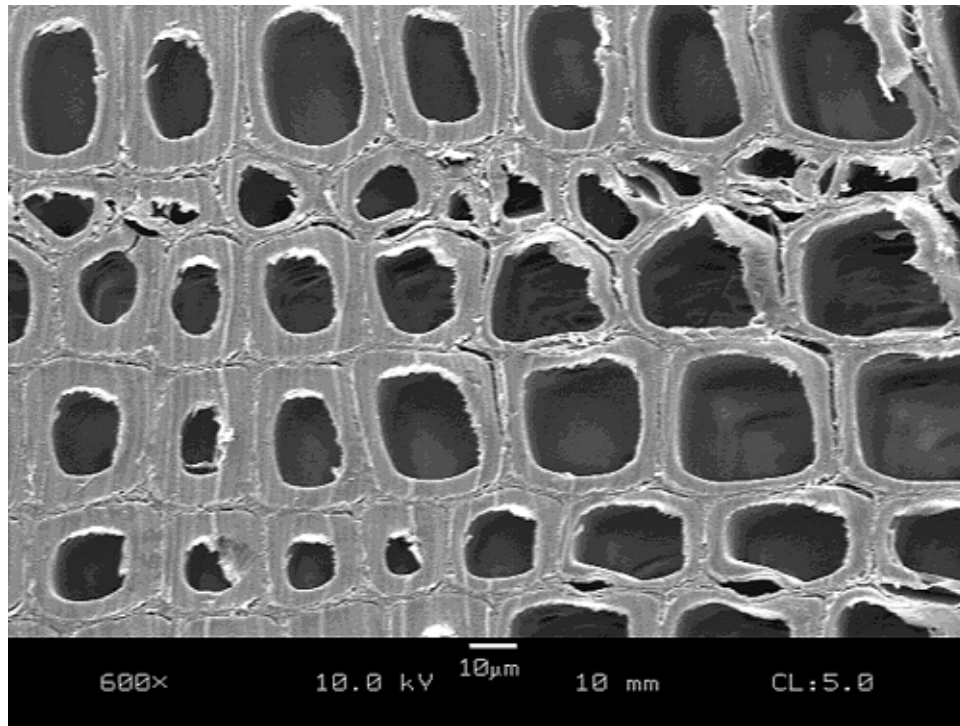
**Figure C74.** SEM micrograph of uncompressed mature yellow-poplar (3mm), TRT3.



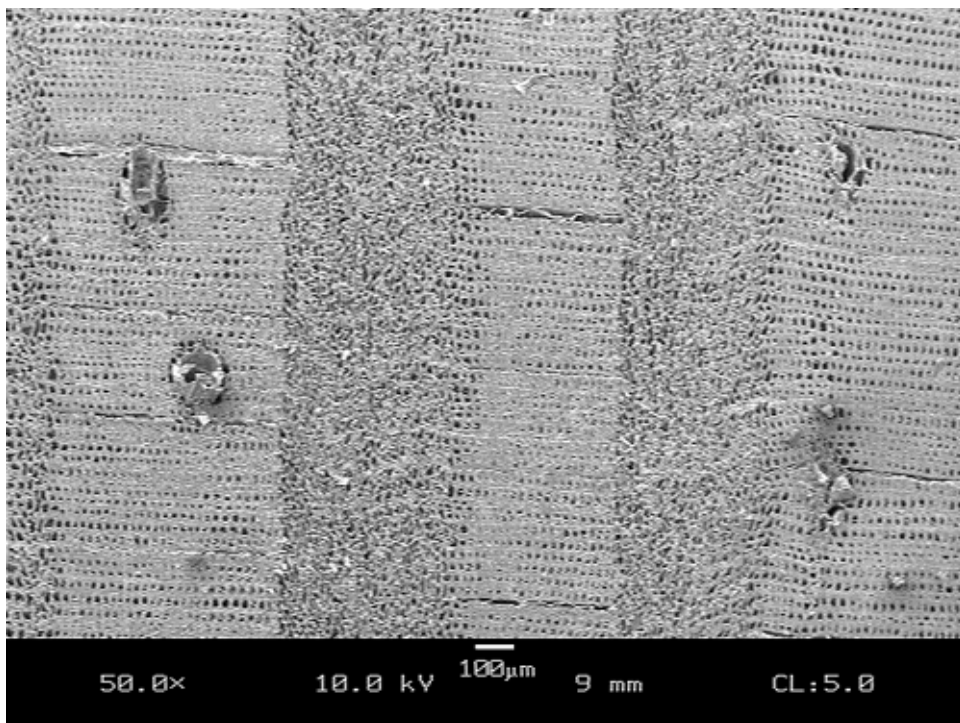
**Figure C75.** SEM micrograph of mature southern pine, control.



**Figure C76.** SEM micrograph of mature southern pine, control.



**Figure C77.** SEM micrograph of mature southern pine, control.



**Figure C78.** SEM micrograph of compressed mature southern pine, TRT1.