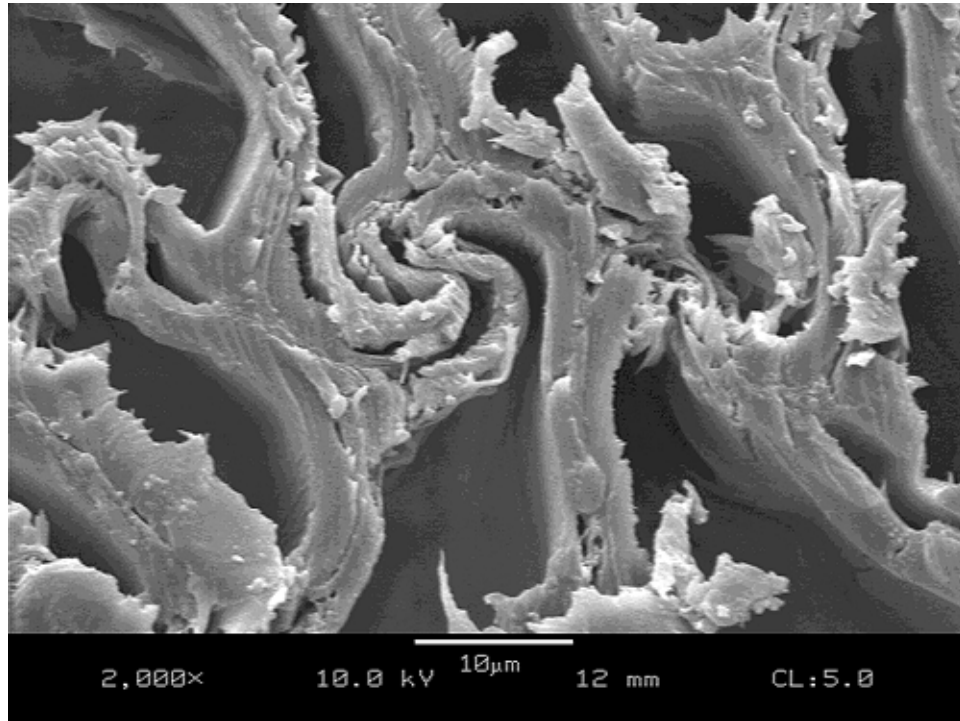
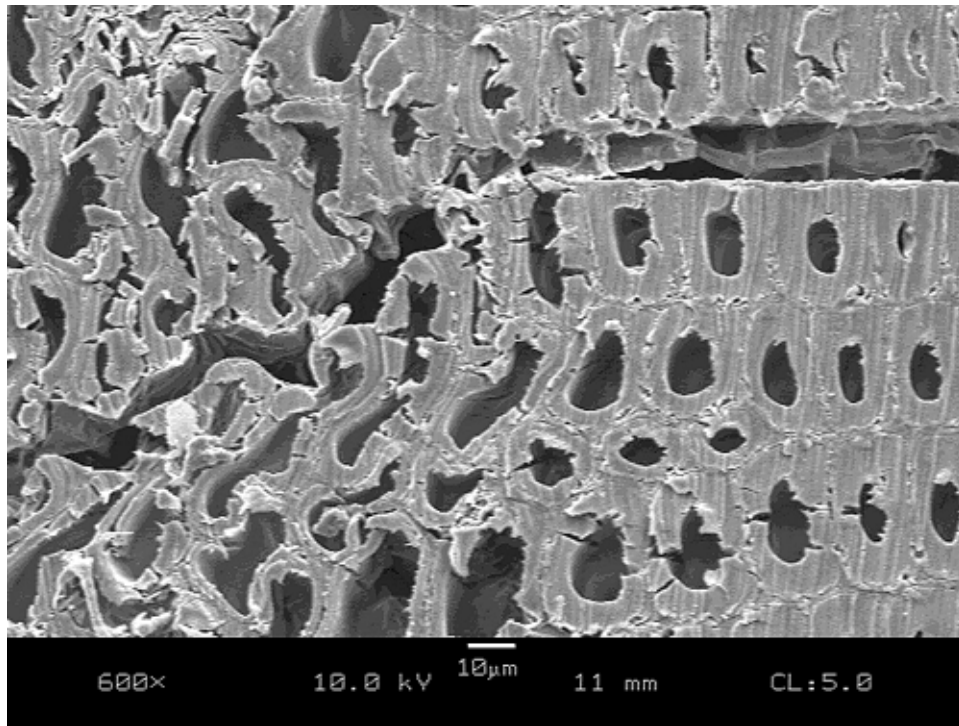


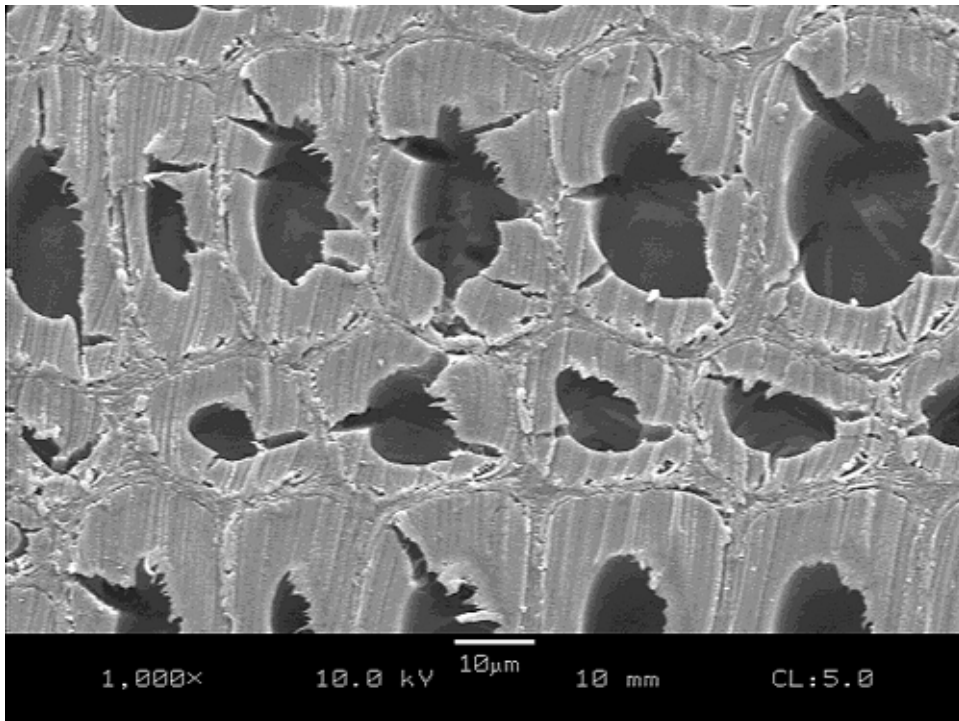
**Figure C79.** SEM micrograph of compressed mature southern pine, TRT1.



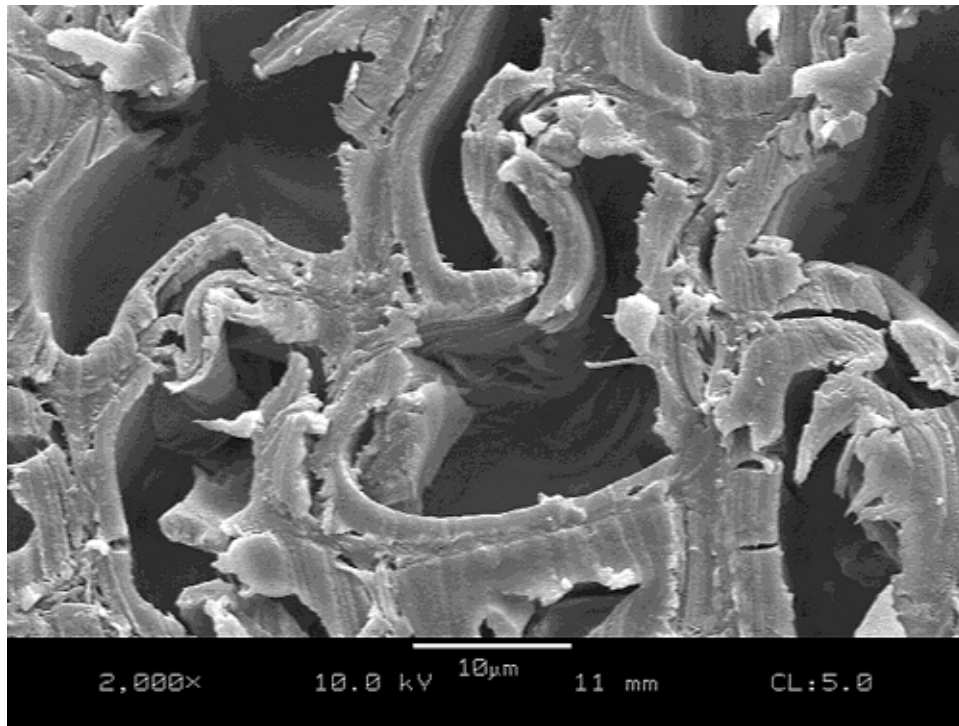
**Figure C80.** SEM micrograph of compressed mature southern pine, TRT1.



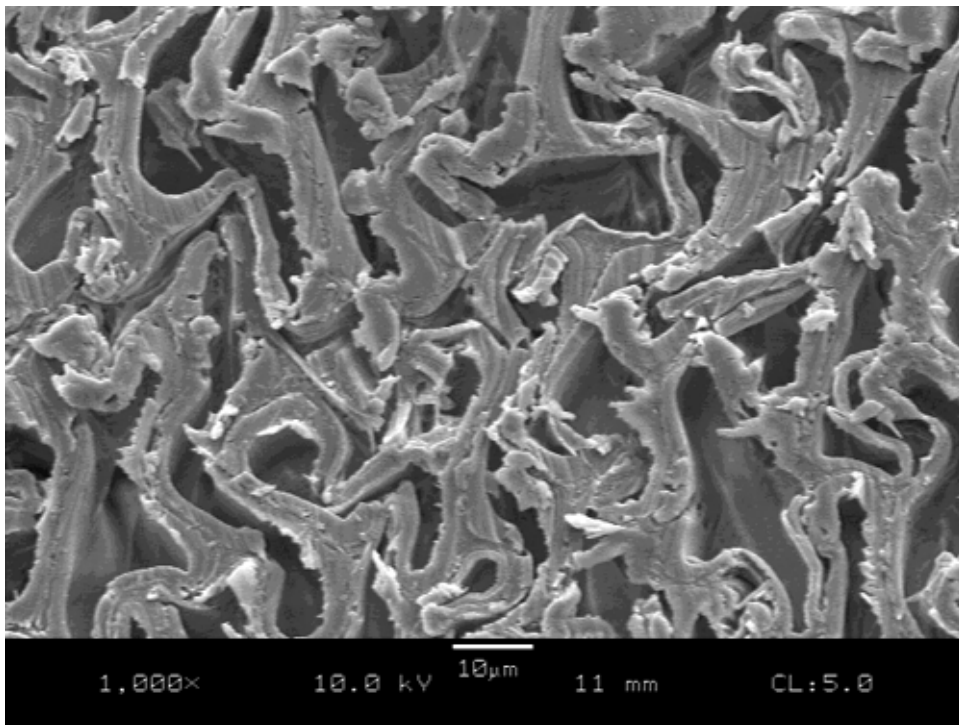
**Figure C81.** SEM micrograph of compressed mature southern pine, TRT1, showing multiple fractures in earlywood tracheids.



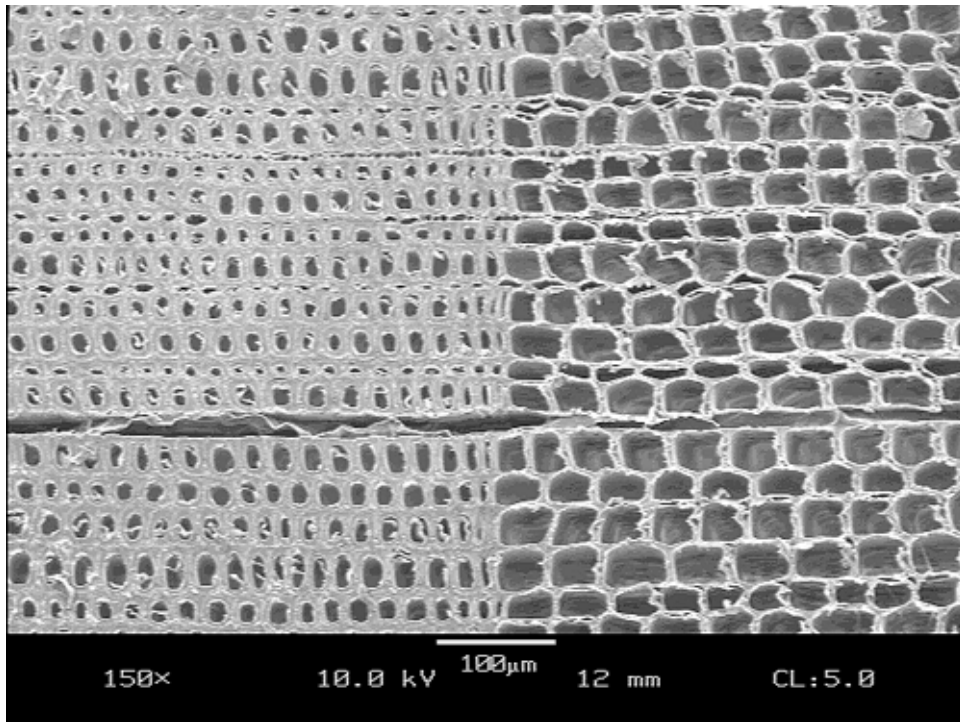
**Figure C82.** SEM micrograph of compressed mature southern pine, TRT1, showing cracks in the walls of latewood tracheids.



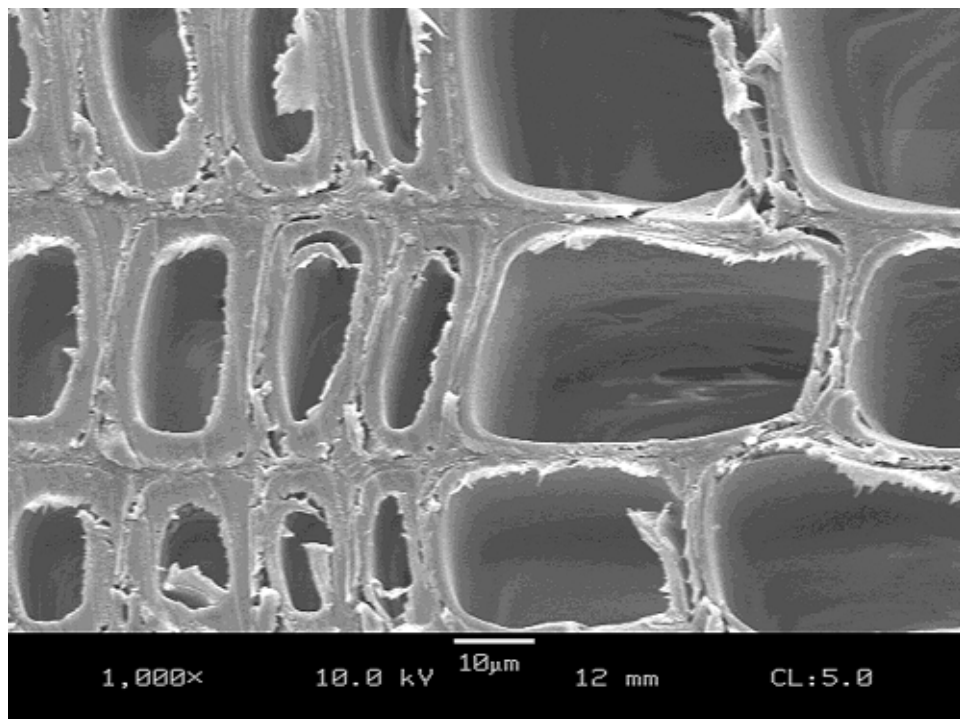
**Figure C83.** SEM micrograph of compressed mature southern pine, TRT1, multiple fractures in earlywood tracheids.



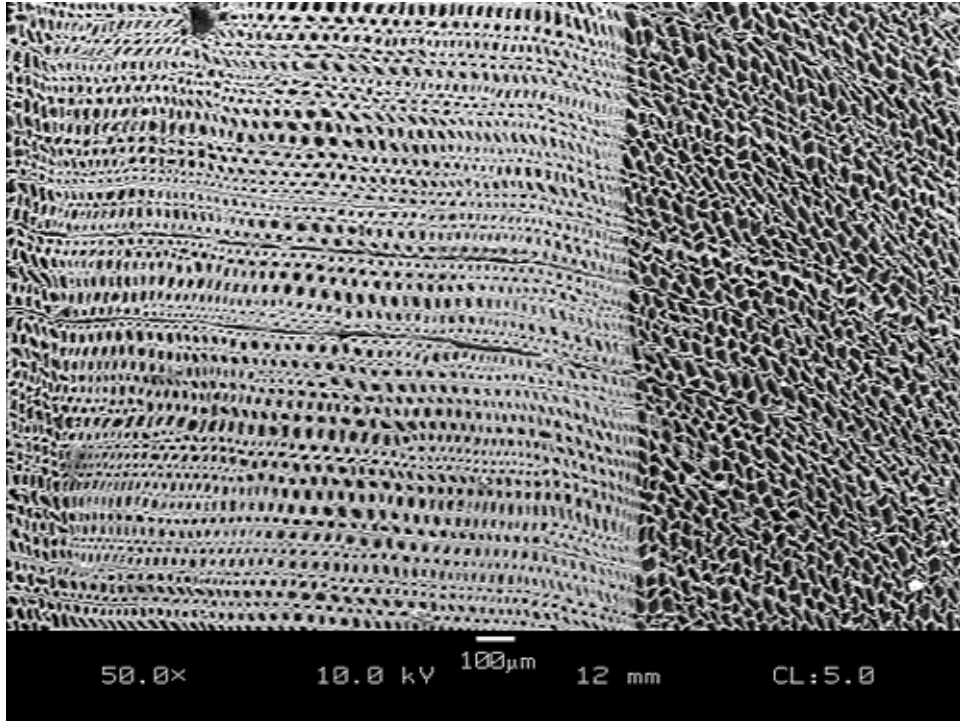
**Figure C84.** SEM micrograph of compressed mature southern pine, TRT1, showing failure of earlywood tracheids.



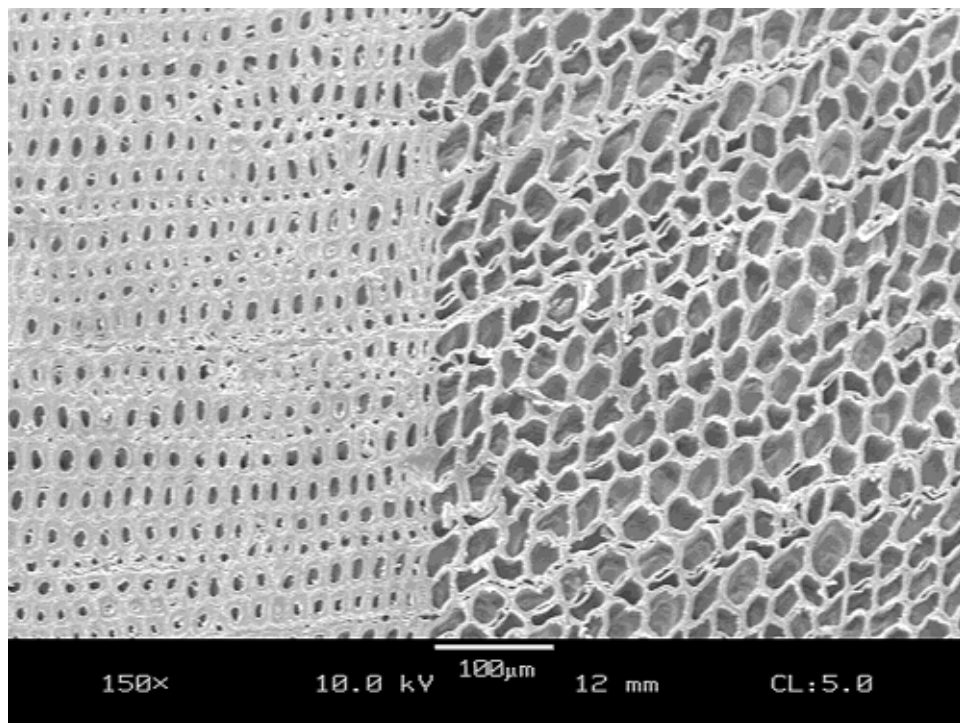
**Figure C85.** SEM micrograph of uncompressed mature southern pine, TRT1.



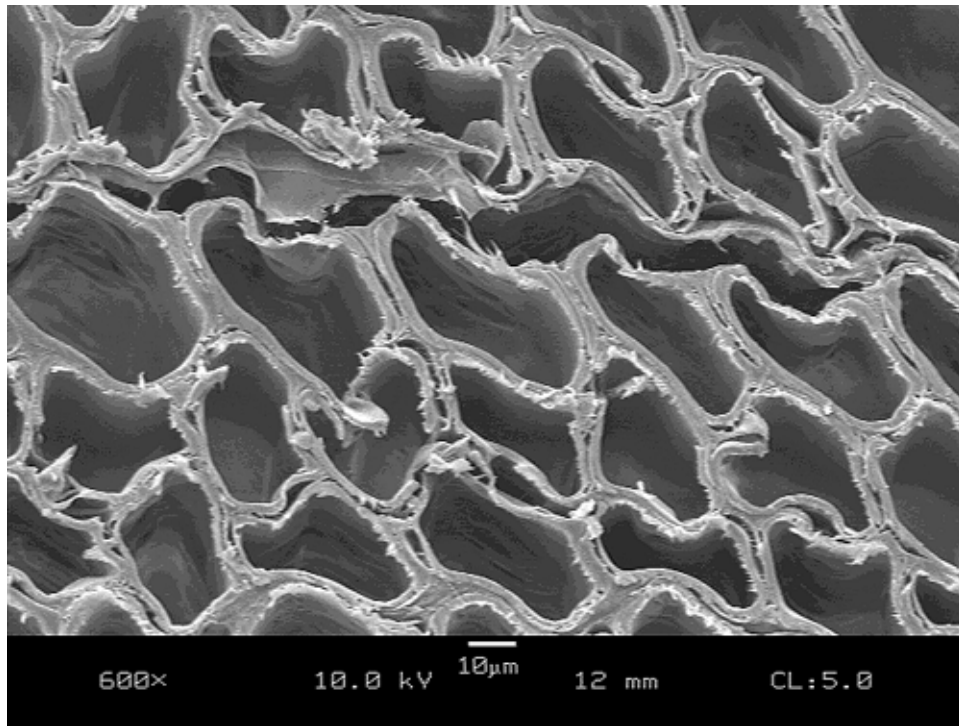
**Figure C86.** SEM micrograph of uncompressed mature southern pine, TRT1.



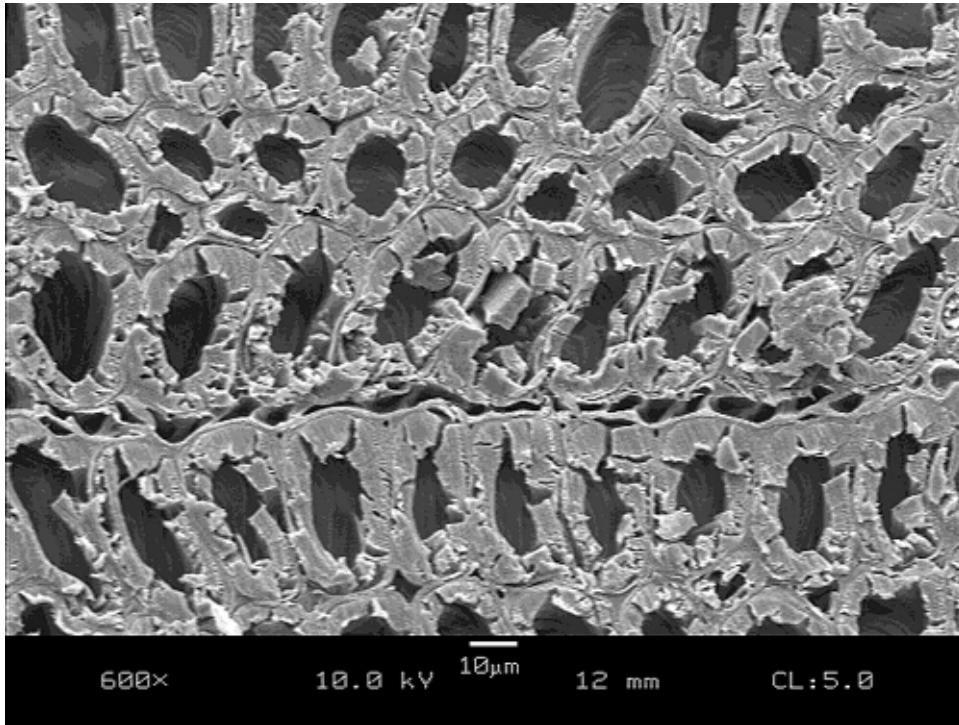
**Figure C87.** SEM micrograph of compressed mature southern pine, TRT2.



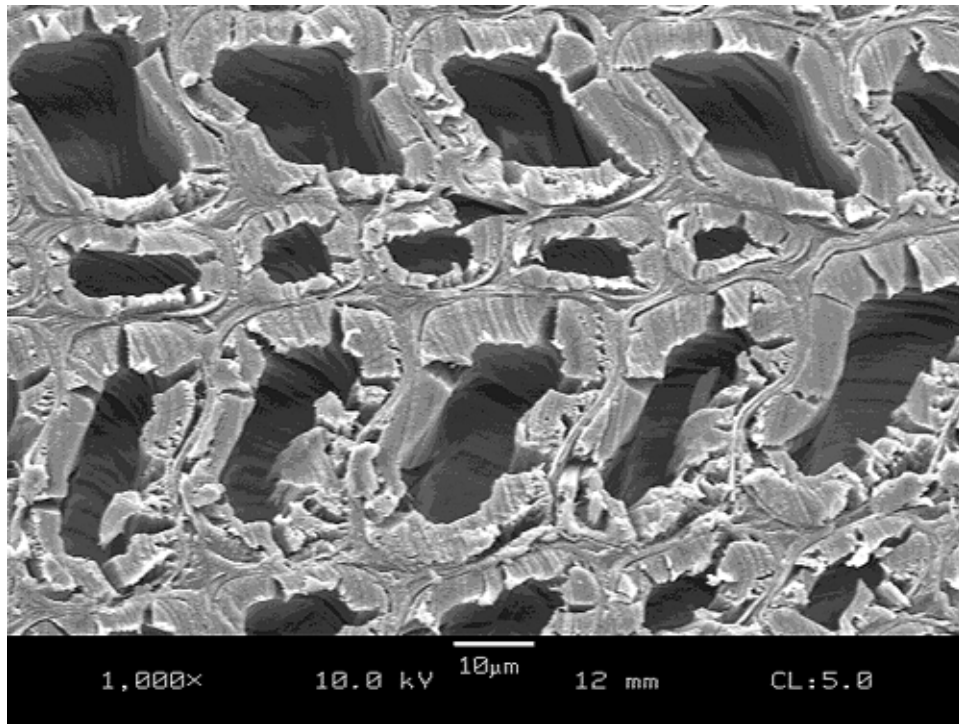
**Figure C88.** SEM micrograph of compressed mature southern pine, TRT2.



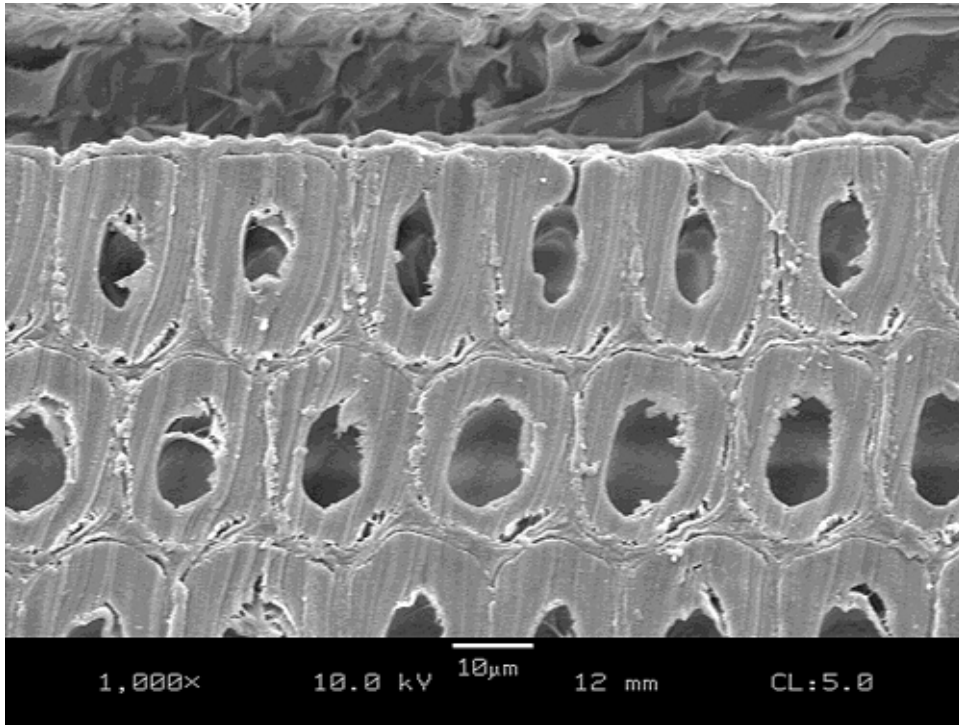
**Figure C89.** SEM micrograph of compressed mature southern pine, TRT2, showing separation between earlywood tracheids.



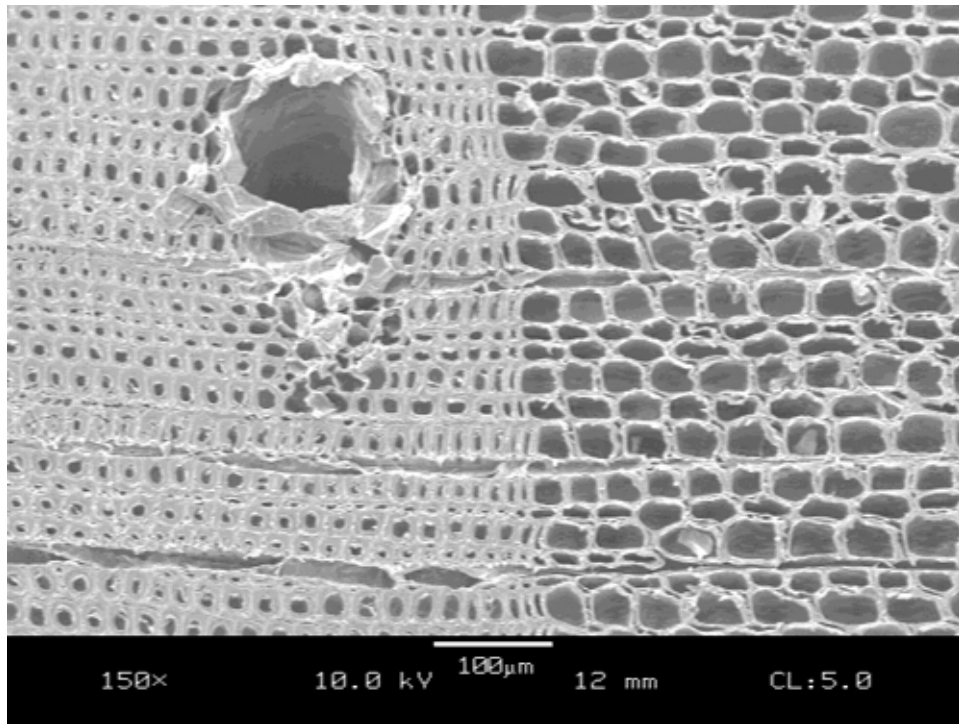
**Figure C90.** SEM micrograph of compressed mature southern pine, TRT2, showing multiple cracks in the tracheids walls.



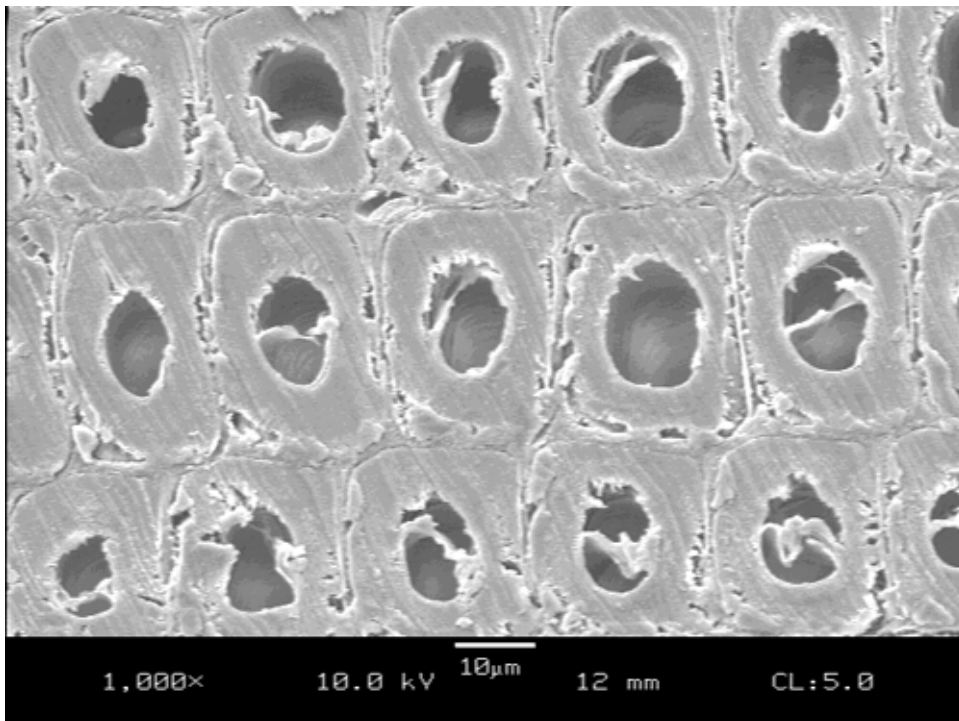
**Figure C91.** SEM micrograph of compressed mature southern pine, TRT2.



**Figure C92.** SEM micrograph of compressed mature southern pine, TRT2.

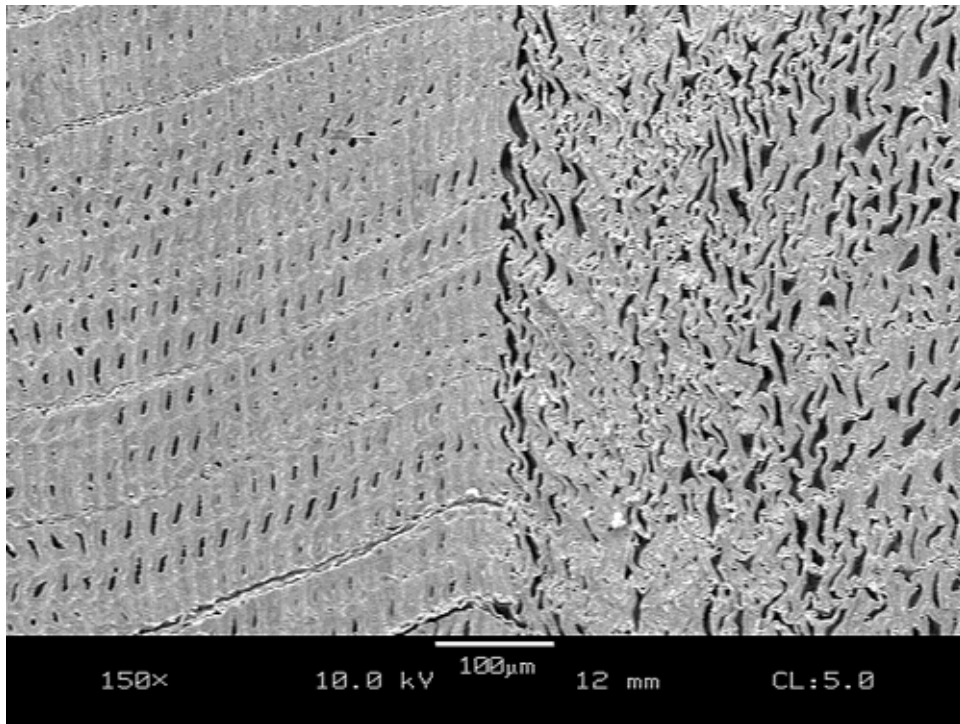


**Figure C93.** SEM micrograph of uncompressed mature southern pine, TRT2.

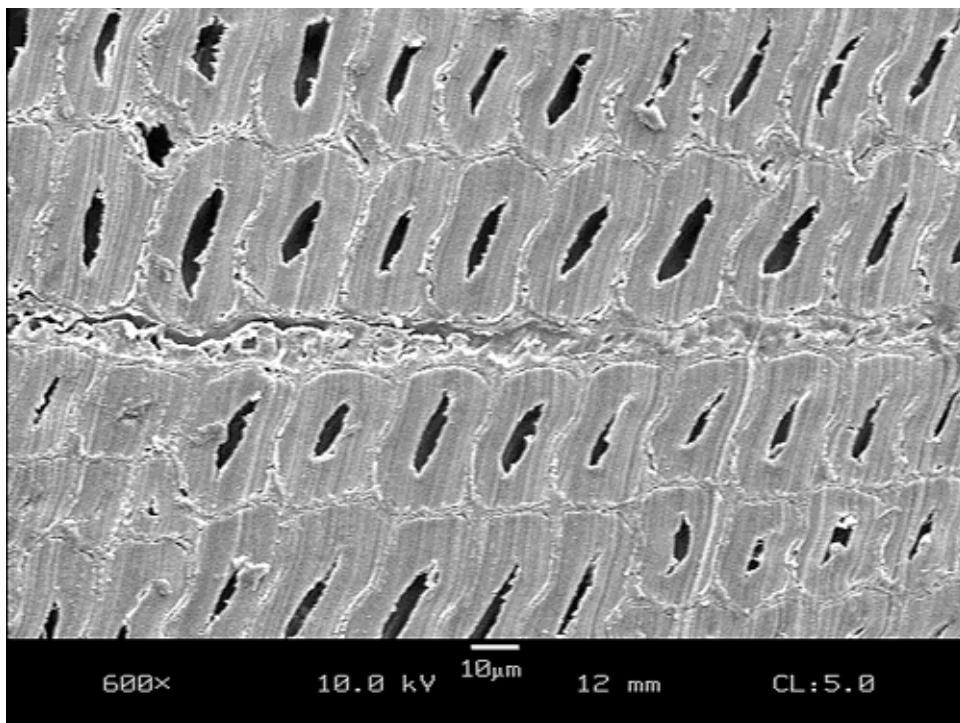


**Figure C94.** SEM micrograph of uncompressed mature southern pine, TRT2.

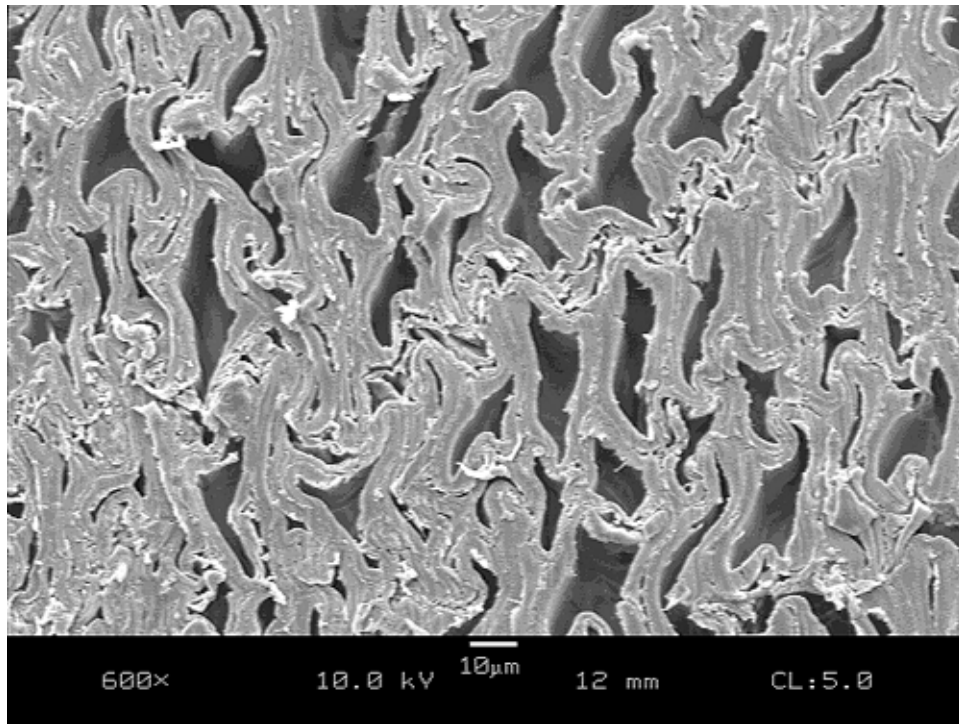




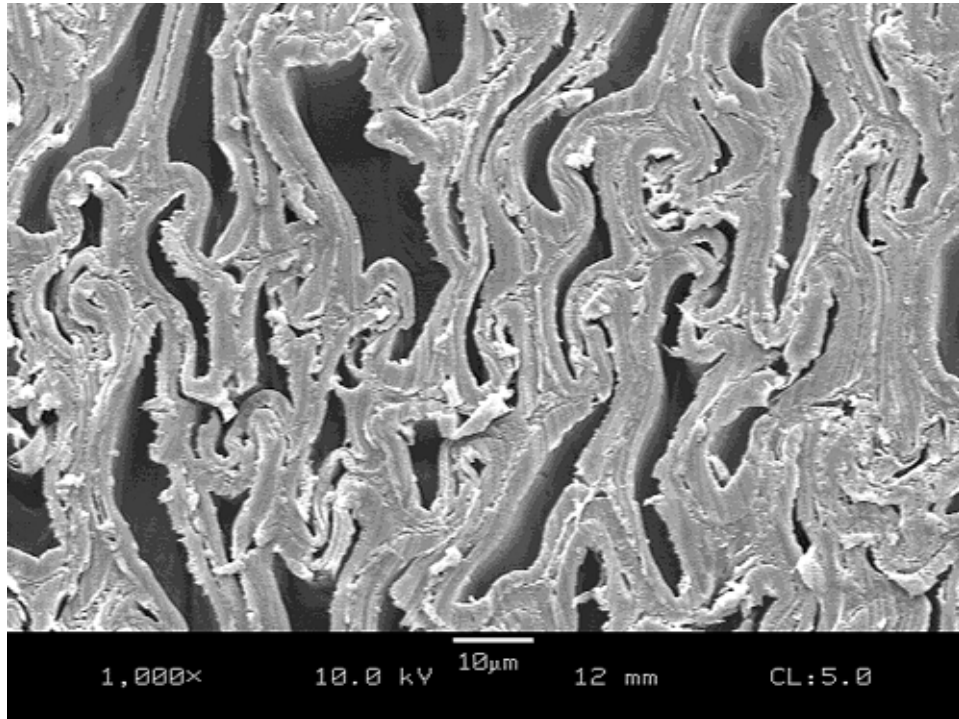
**Figure C95.** SEM micrograph of compressed mature southern pine, TRT3.



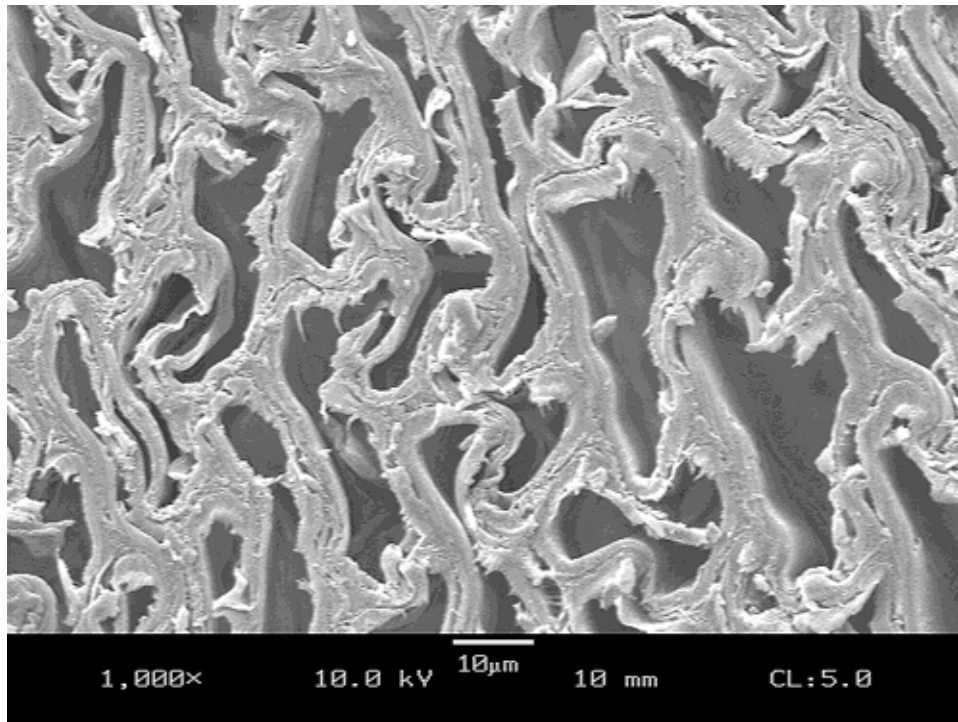
**Figure C96.** SEM micrograph of compressed mature southern pine, TRT3.



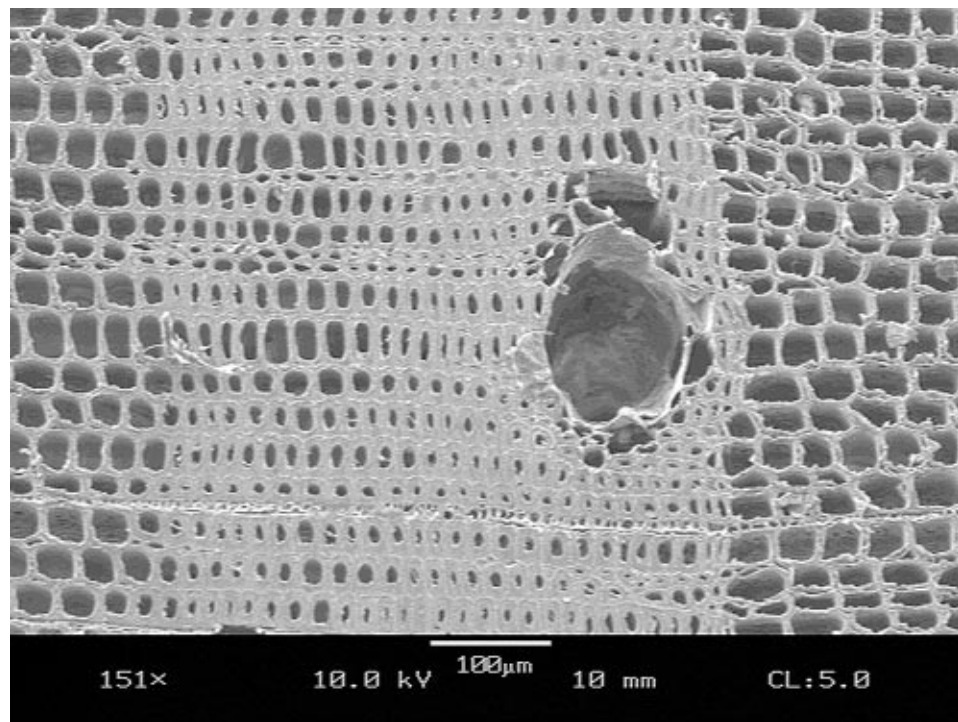
**Figure C97.** SEM micrograph of compressed mature southern pine, TRT3.



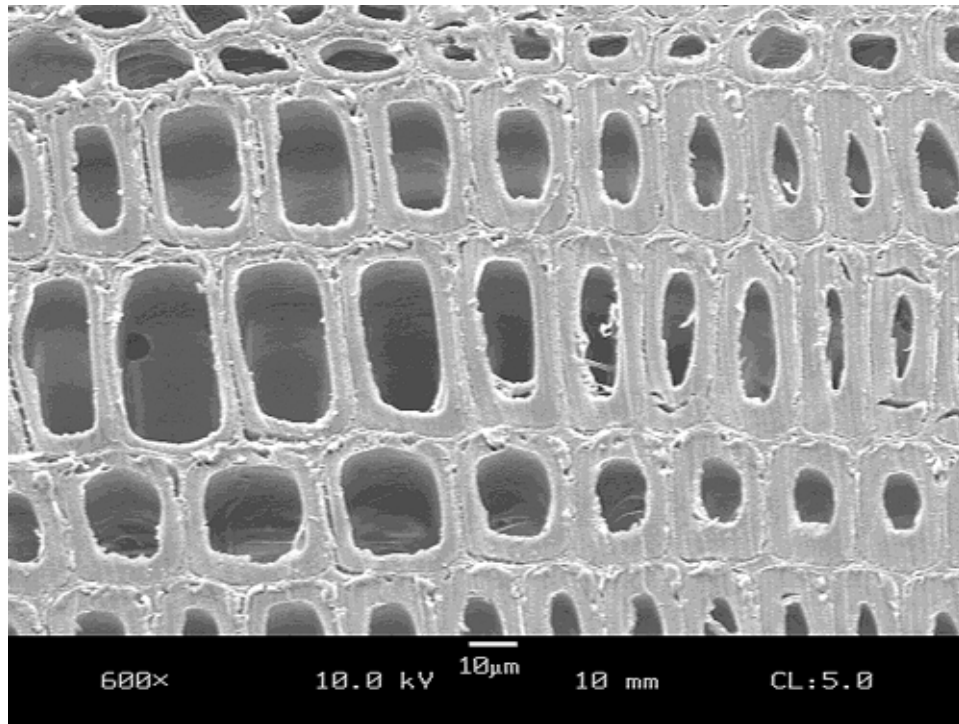
**Figure C98.** SEM micrograph of compressed mature southern pine, TRT3, showing elastic collapse of the earlywood tracheids.



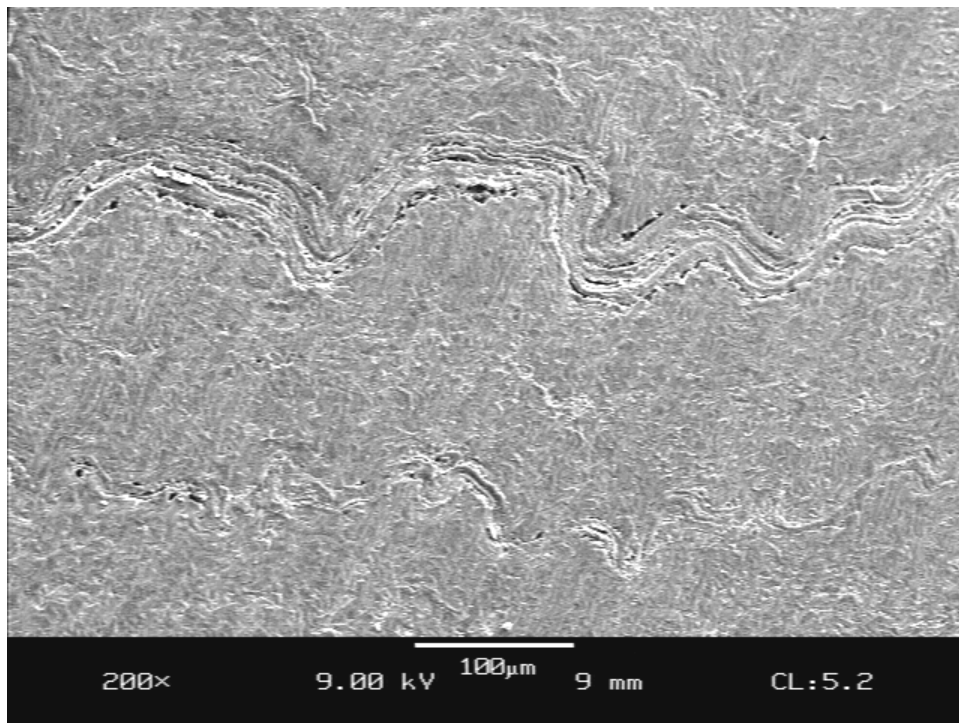
**Figure C99.** SEM micrograph of compressed mature southern pine, TRT3 (mostly elastic collapse).



**Figure C100.** SEM micrograph of uncompressed mature southern pine, TRT3.



**Figure C101.** SEM micrograph of uncompressed mature southern pine, TRT3.



**Figure C102.** SEM micrograph of compressed mature yellow-poplar (fully densified).