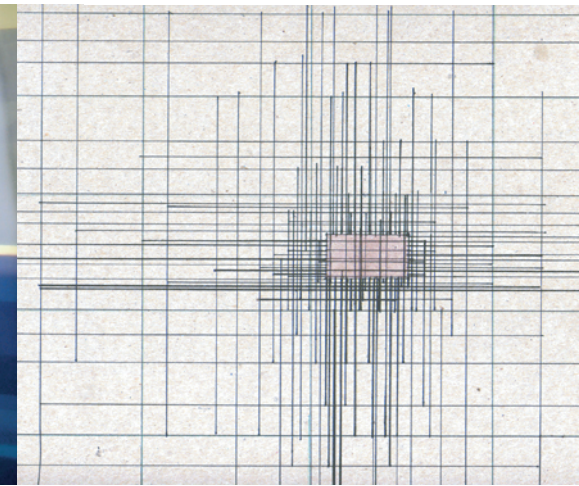
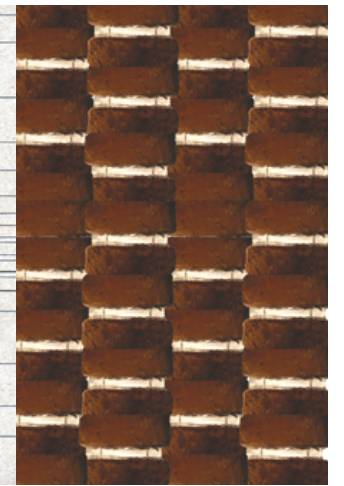


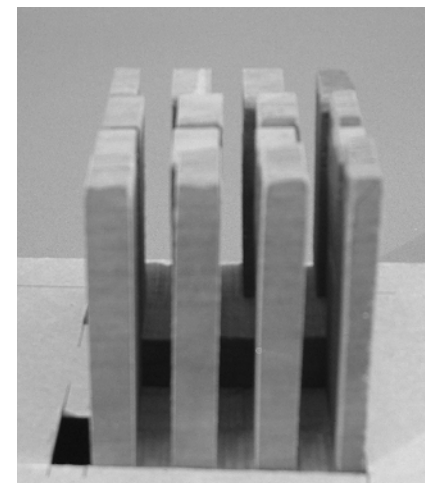
49



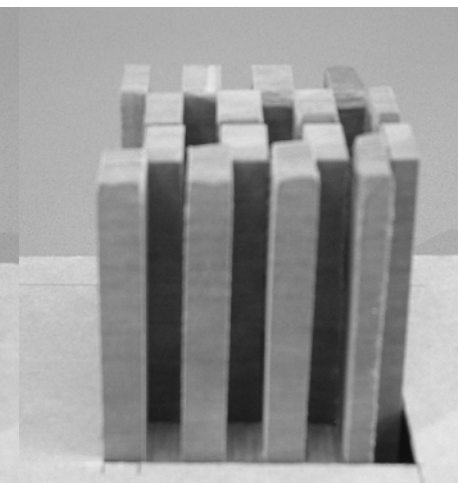
50



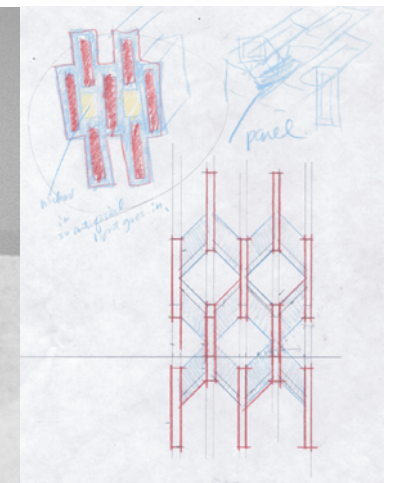
51



52



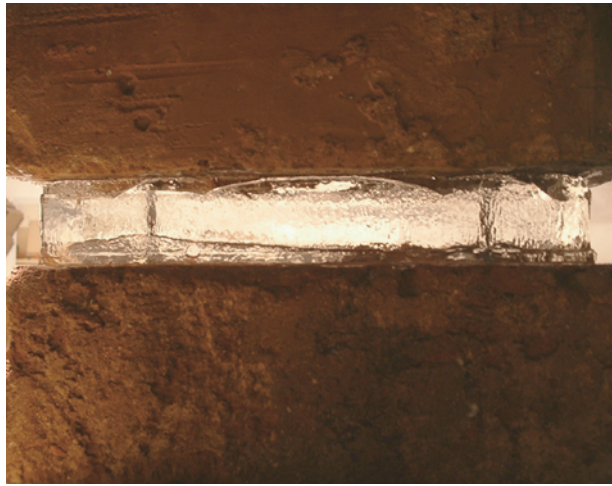
53



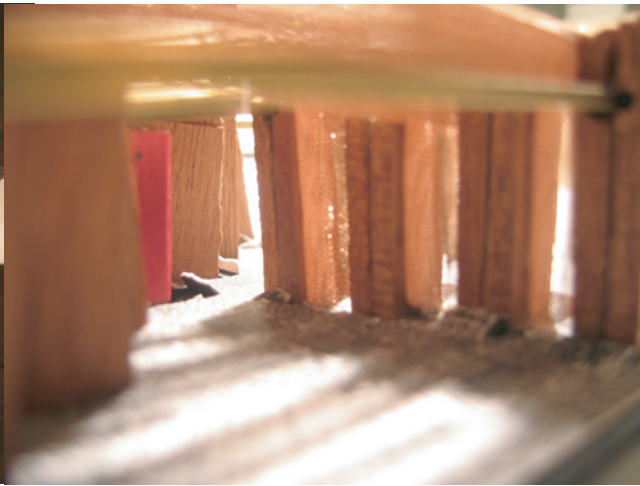
54

49. Transparency study
50. Security collage
51. Transparency in a brick wall

52. Open sign
53. Closed sign
54. Wall pattern sketch



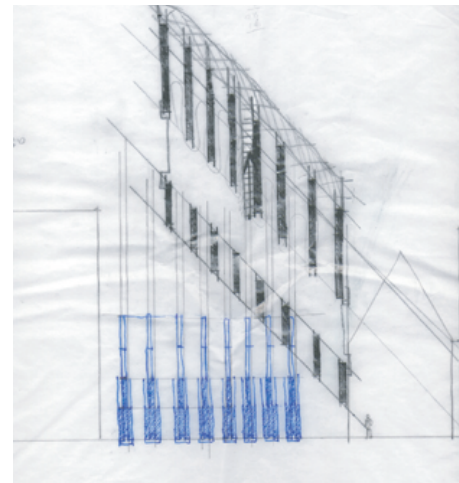
55



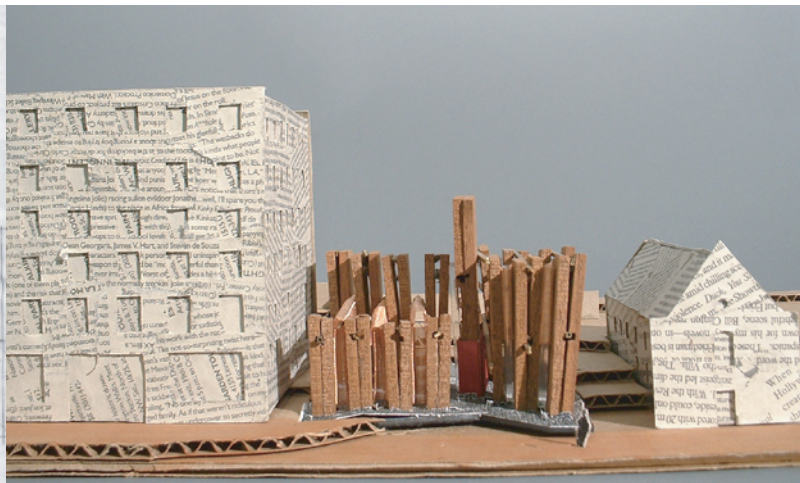
56

45

APPENDIX



57



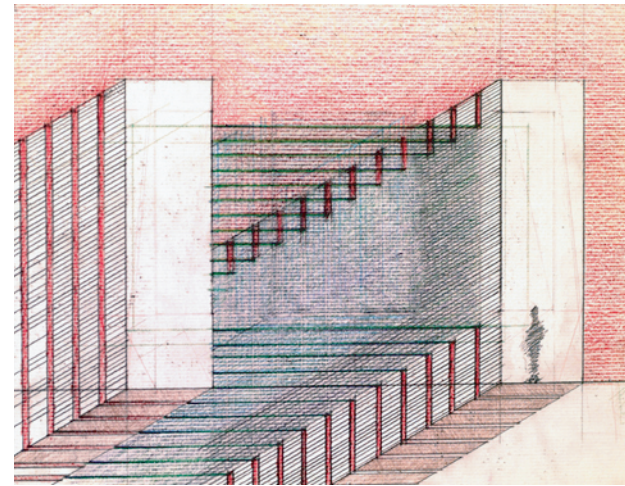
58

55. Resin between bricks
56. Main hall study

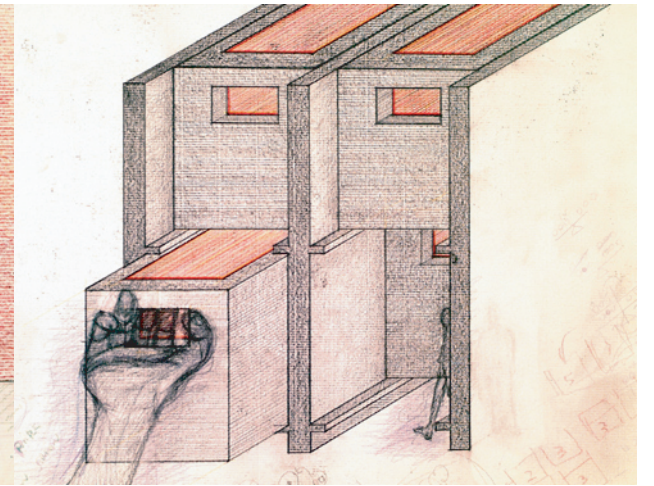
57. Plan study
58. Model study

46

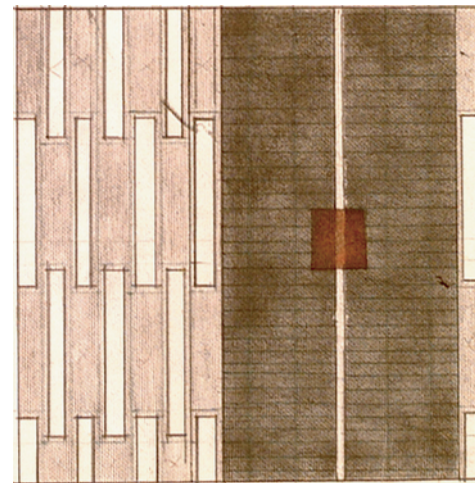
APPENDIX



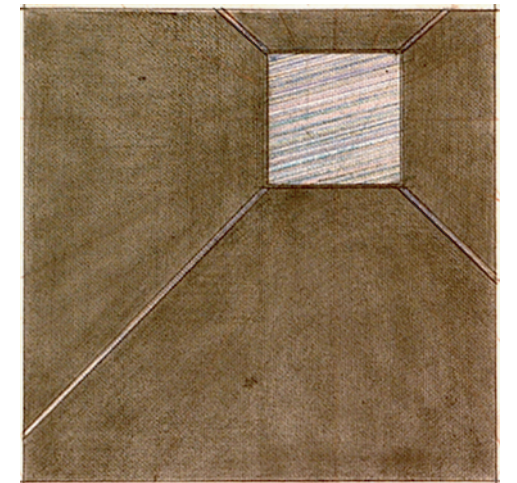
59



60



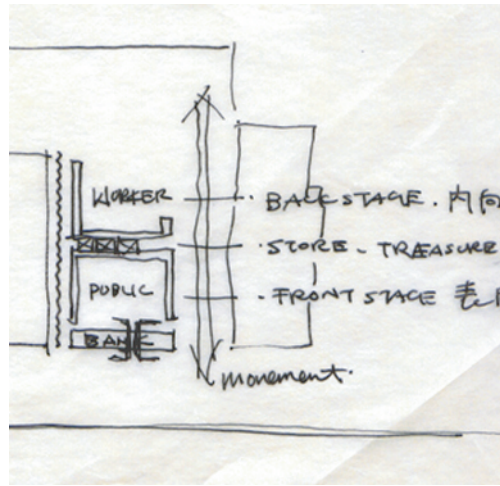
61



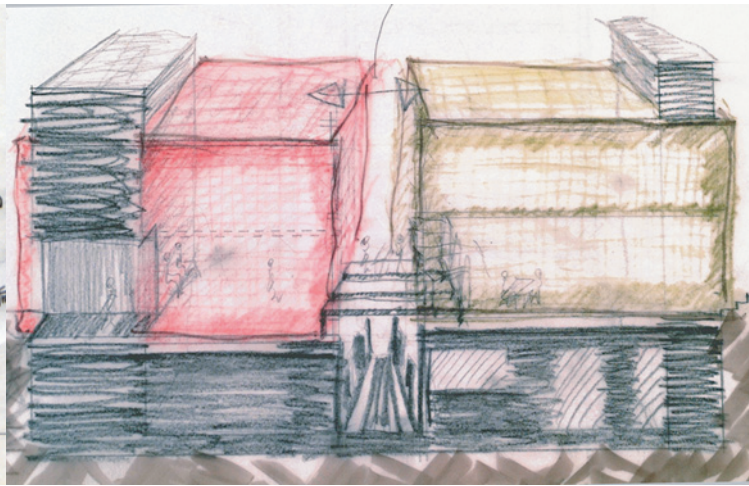
62

59. Two wall concept
60. Drawer concept

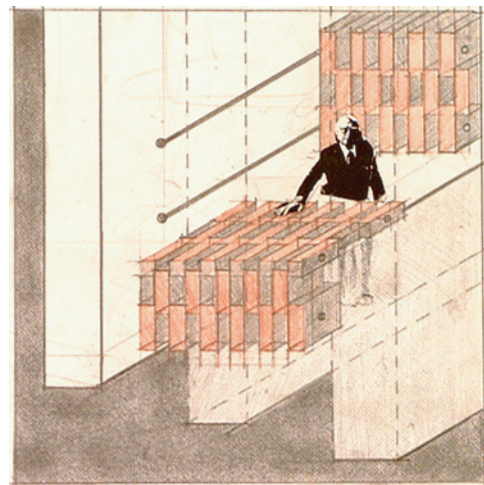
61. Bolt, sign of structure
62. View up from vault



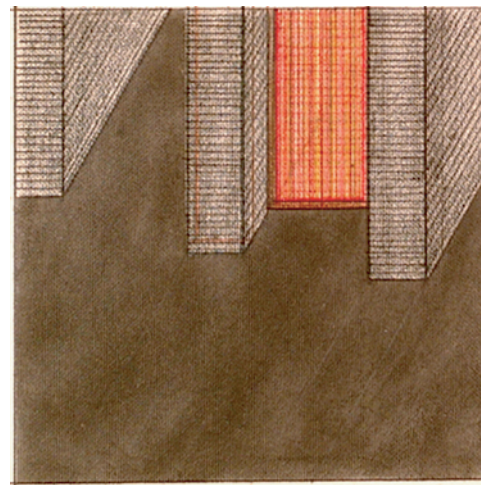
63



64



65



66

63. Concept sketch
64. Concept sketch

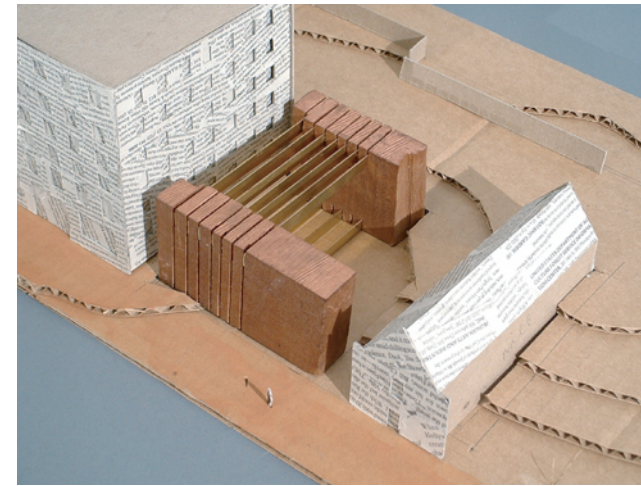
65. Teller space study
66. Vault study

47

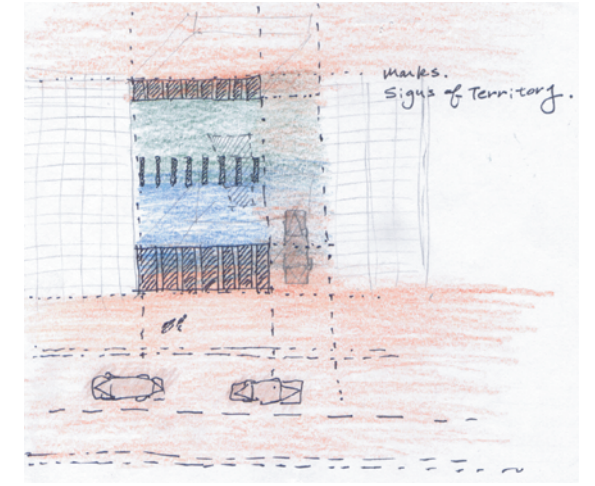
APPENDIX

48

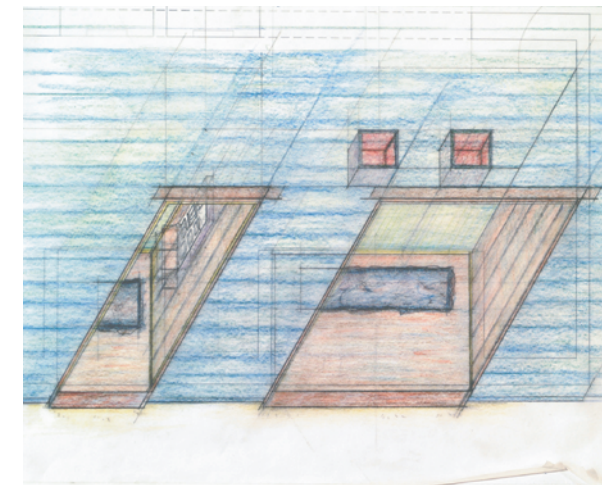
APPENDIX



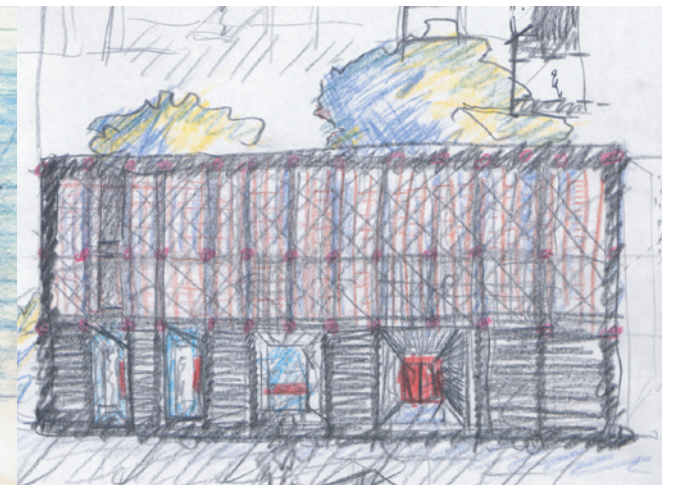
67



68



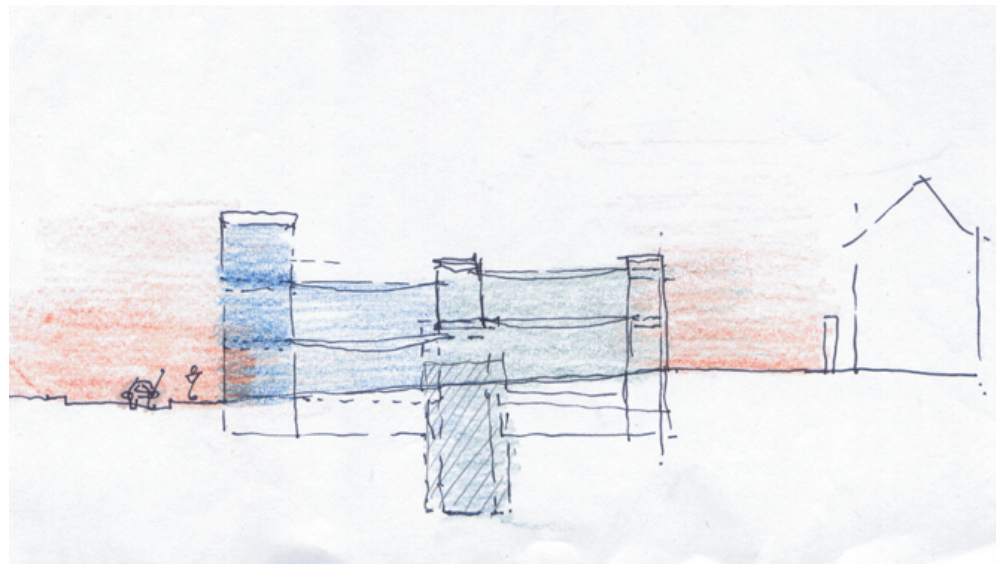
69



70

67. Concept model
68. Concept plan

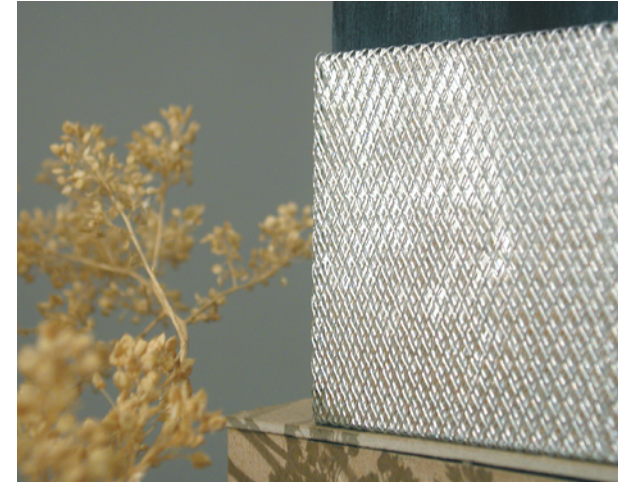
69. ATM and outside teller space study
70. Facade study



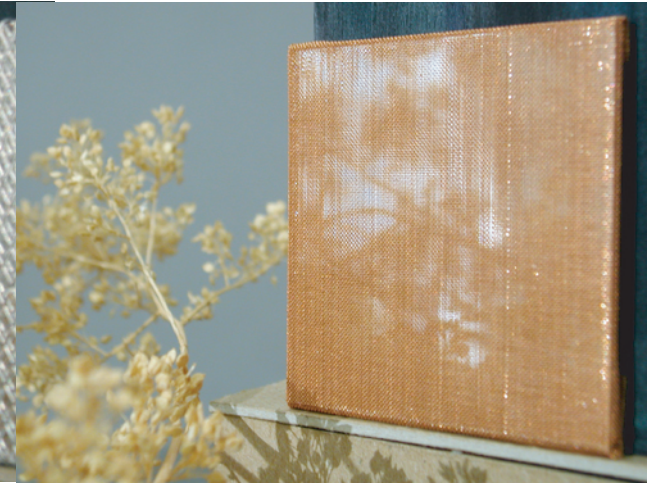
71



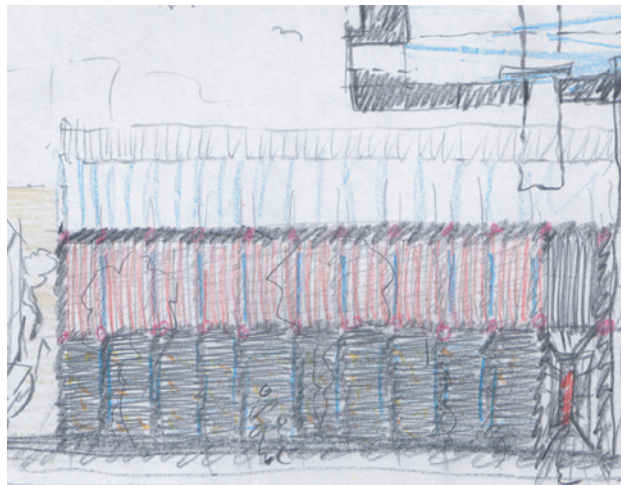
72



75



76



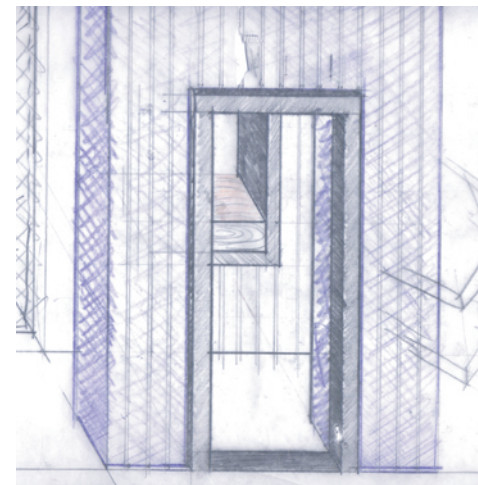
73



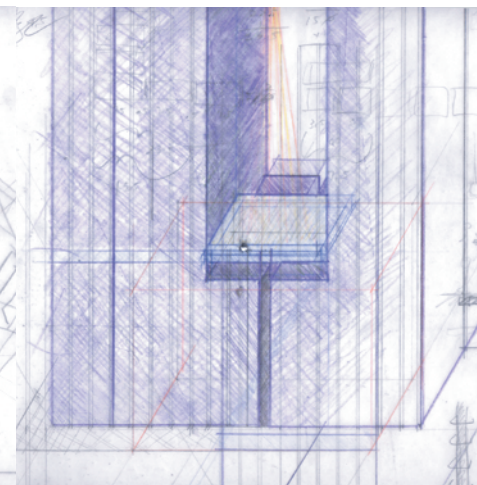
74

71. Concept section
72. Door bell study

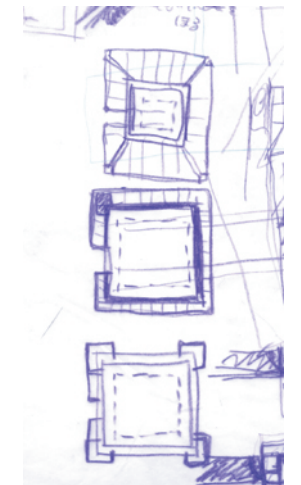
73. Rear facade study
74. Teller space study



77



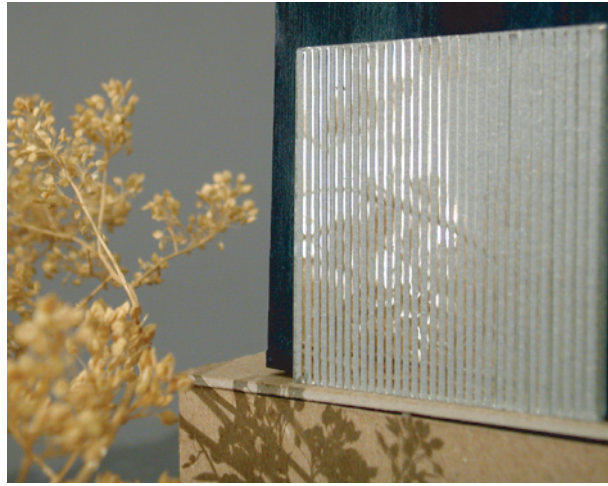
78



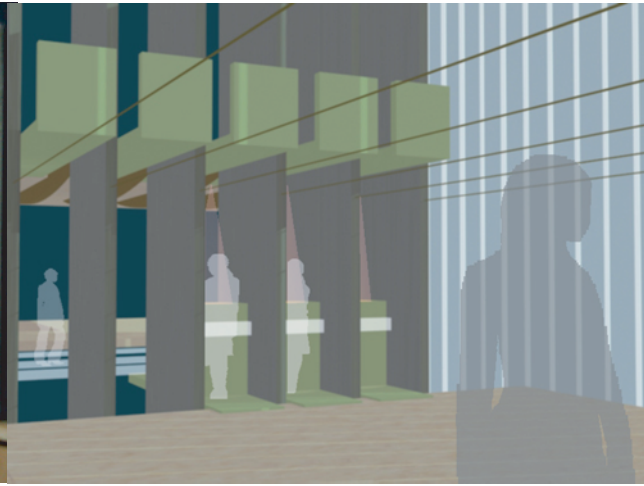
79

75. Mirror with steel mesh study
76. Mirror with copper mesh study

77. Teller space study
78. Teller space study
79. Vault study



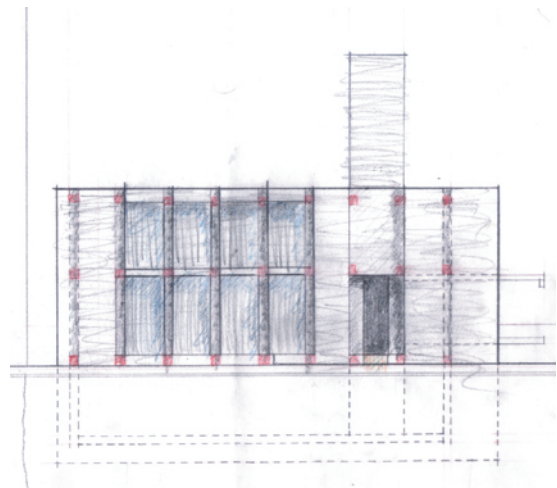
80



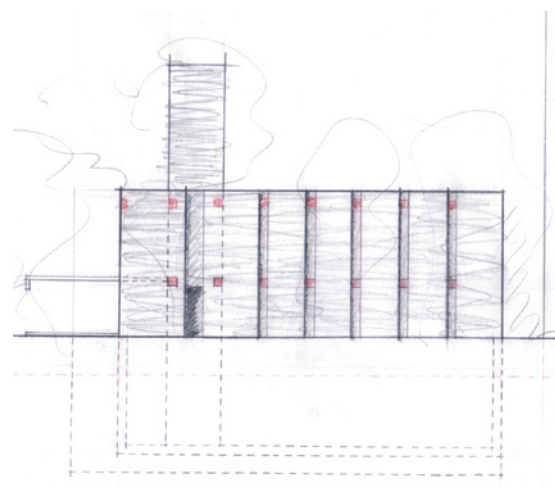
81

51

APPENDIX



82



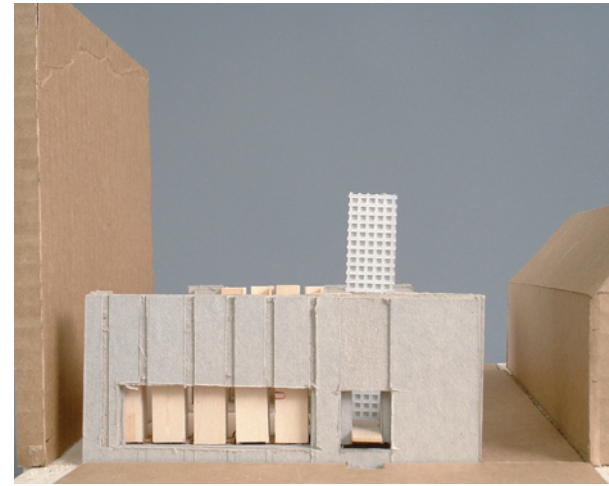
83

80. Mirror with ceramic paint study
81. Main hall interior study

82. Front elevation study
83. Rear elevation study

52

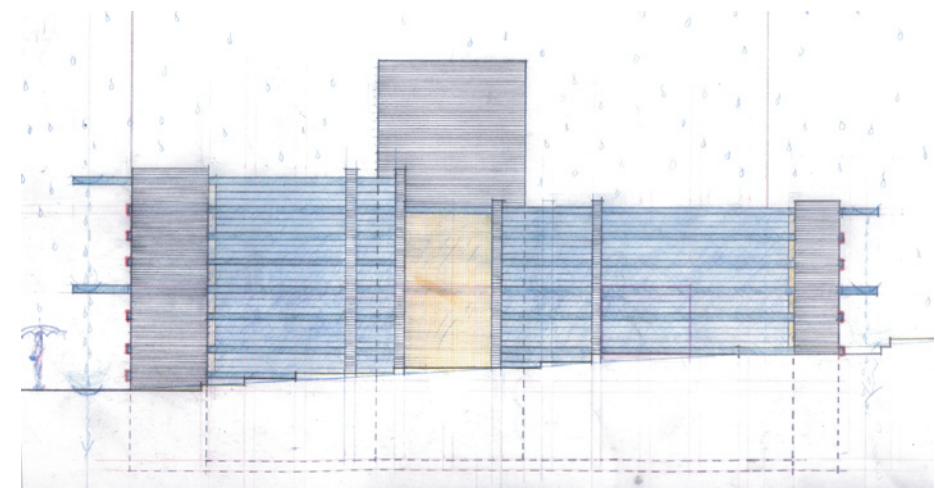
APPENDIX



84



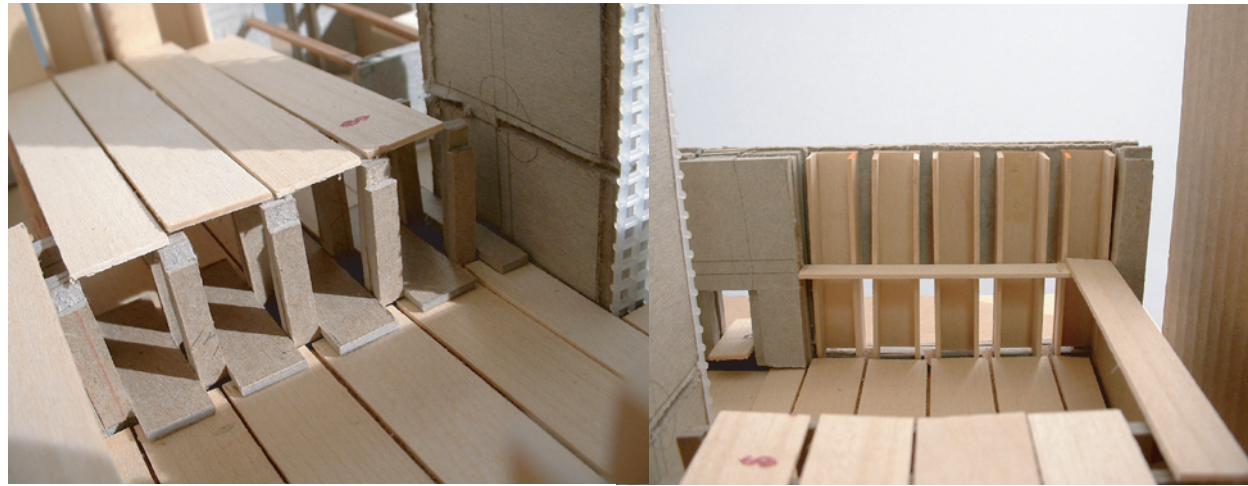
85



86

84. Model, site and building
85. Model, entrance

86. Side elevation study

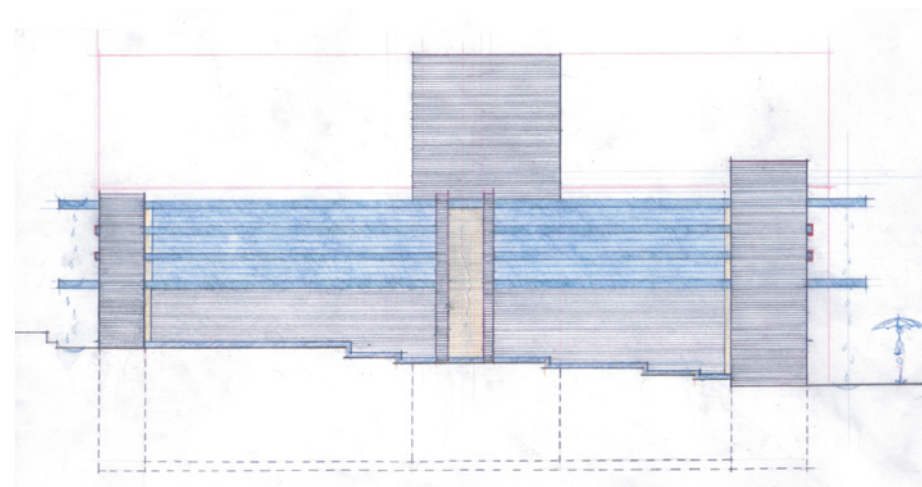


87

88

53

APPENDIX



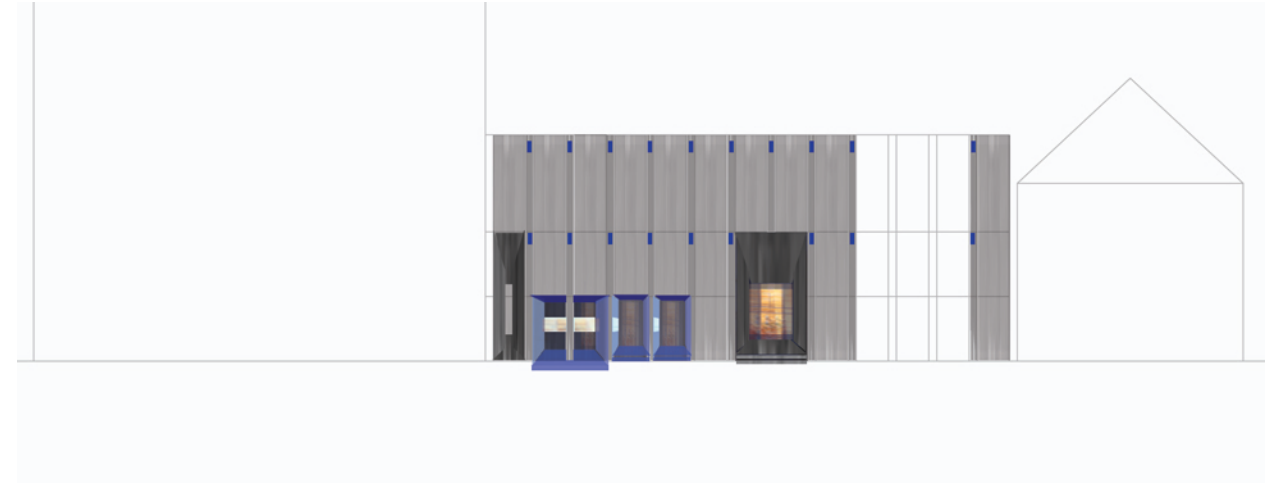
89

87. Teller space bridge study
88. Bridge study

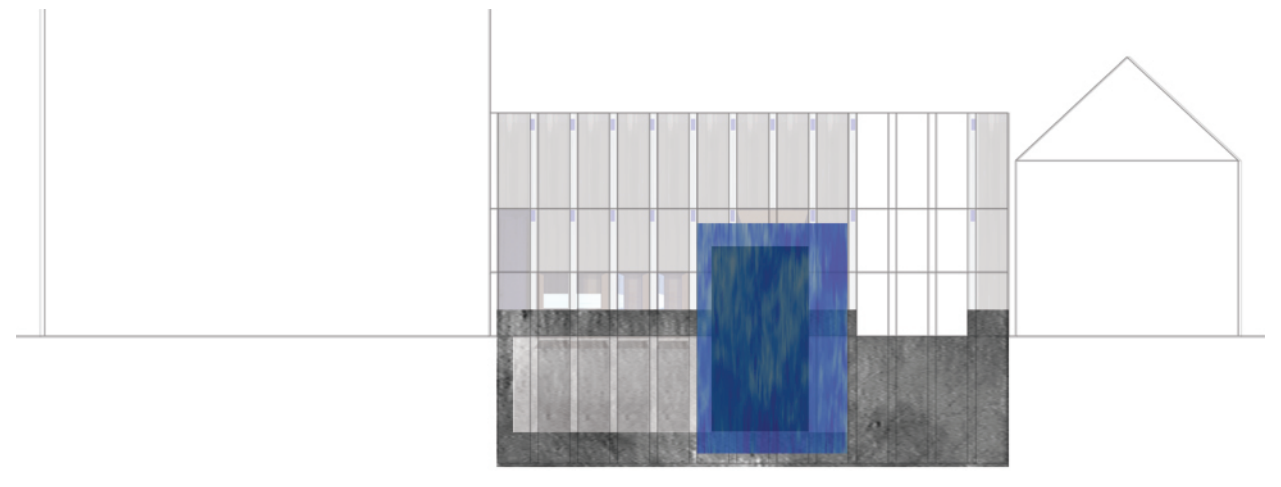
89. Side elevation study

54

APPENDIX



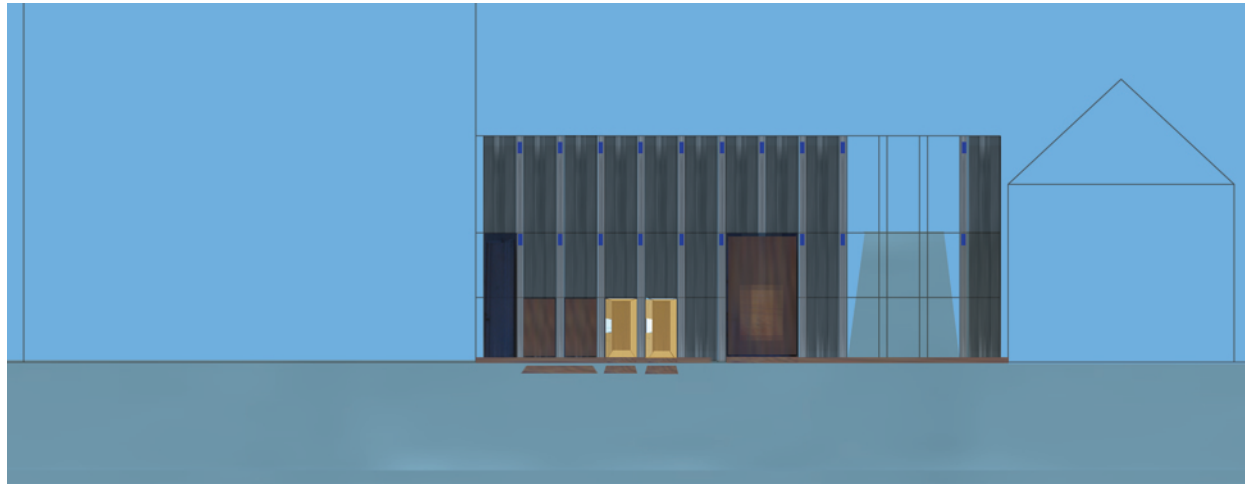
90



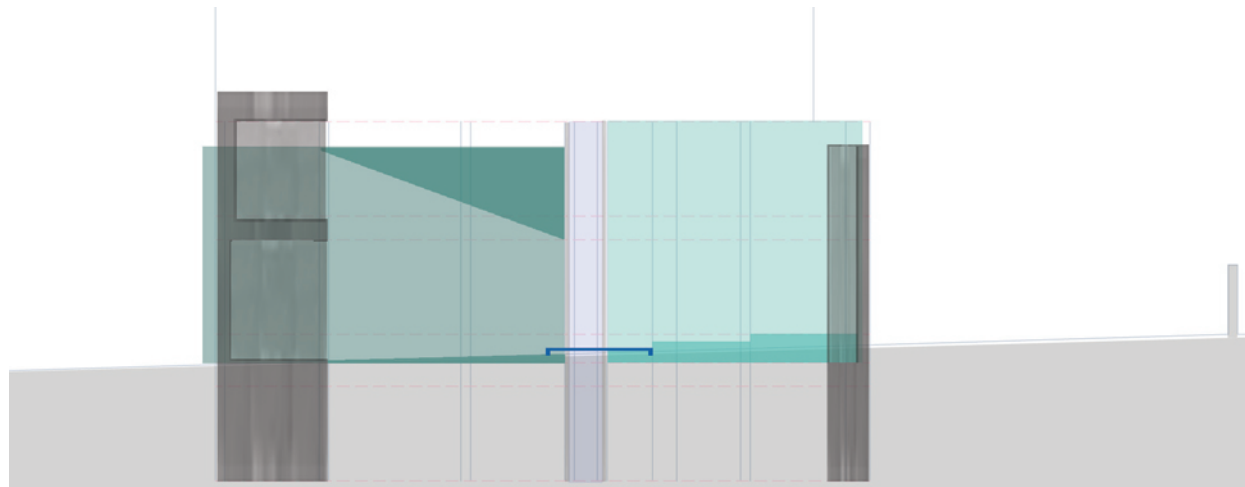
91

90. Front elevation day time study

91. Vault and coupon room section



92



93

92. Front elevation night time study

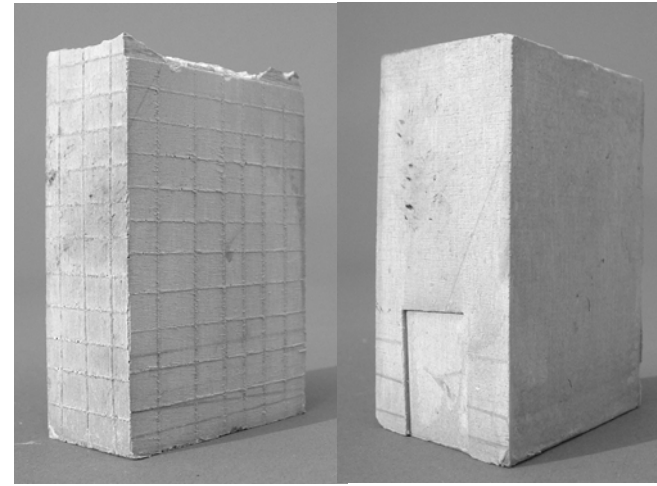
93. Section study

55

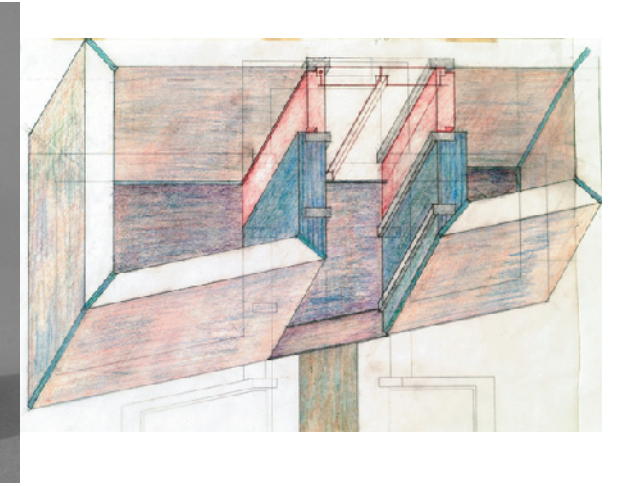
APPENDIX

56

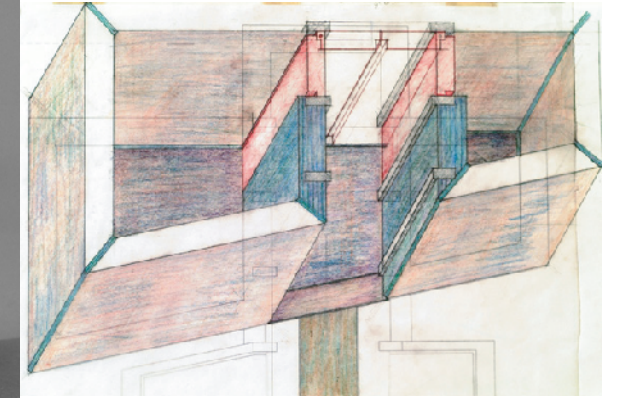
APPENDIX



94



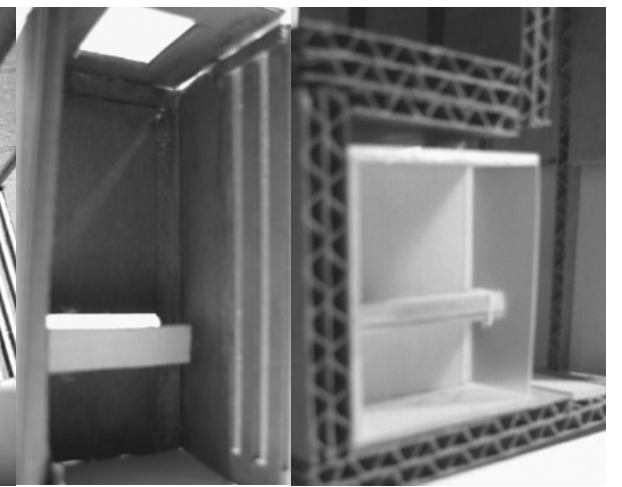
95



96



97

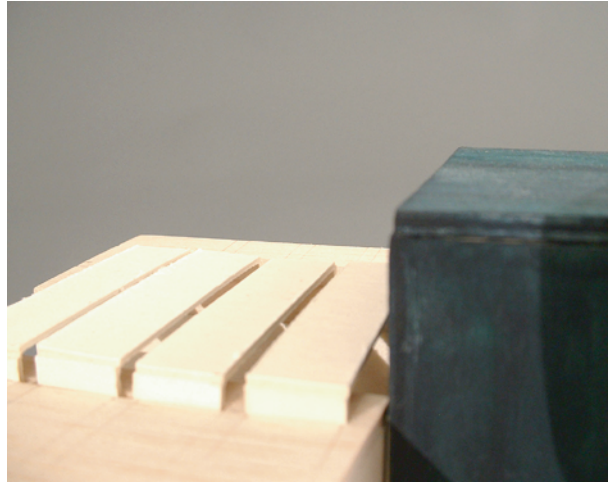


98

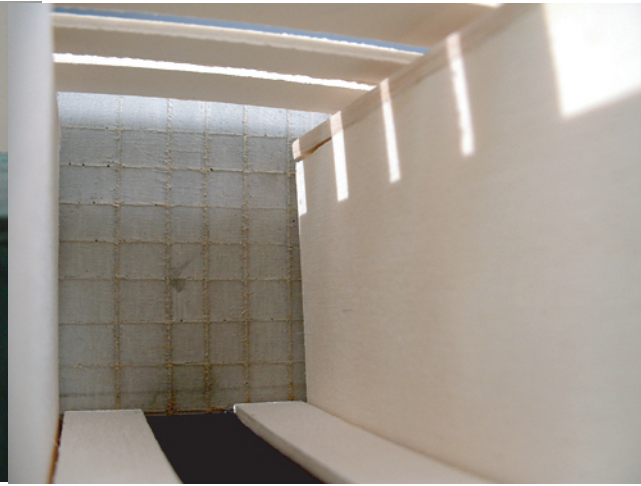
99

94. Vault wall texture study
95. Vault wall texture study
96. Vault study

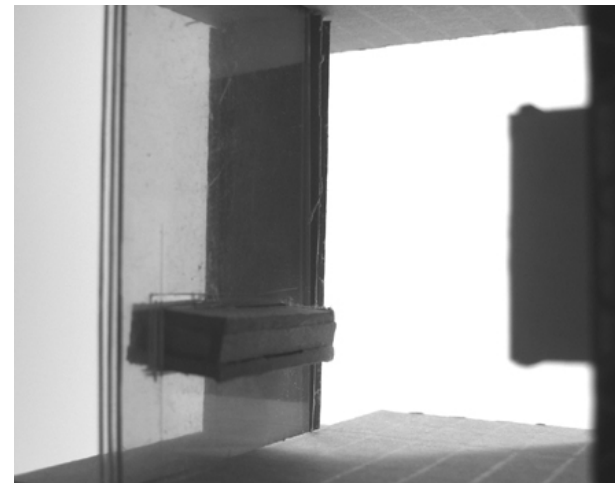
97. Alley ground texture study
98. Coupon room study
99. Coupon room study



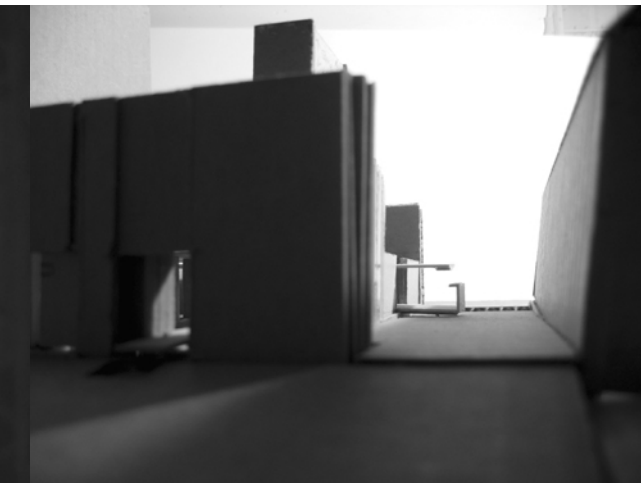
100



101



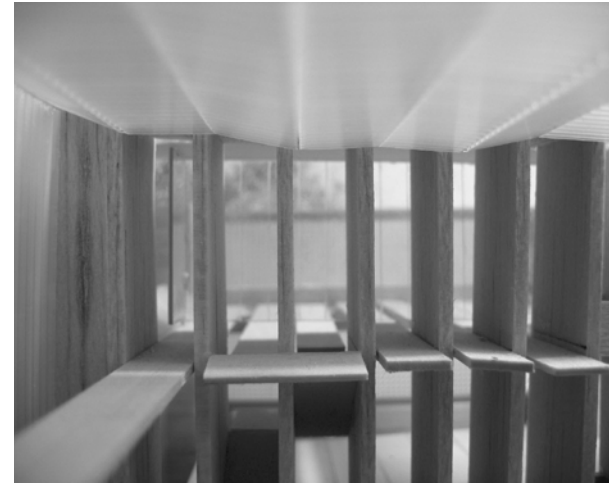
102



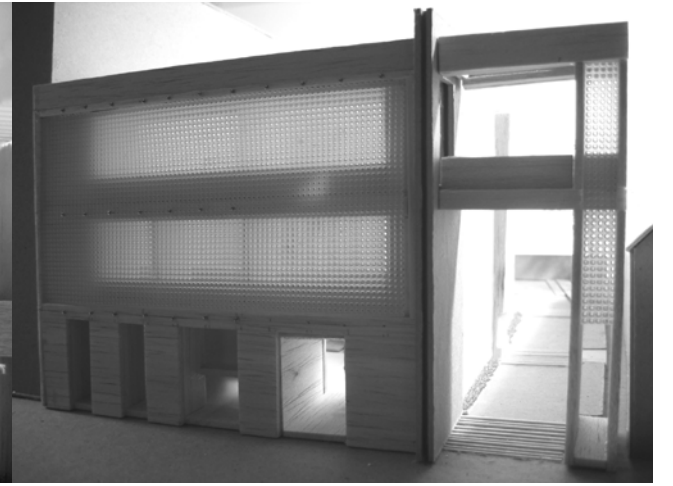
103

100. Bridge study
101. Under the bridge study

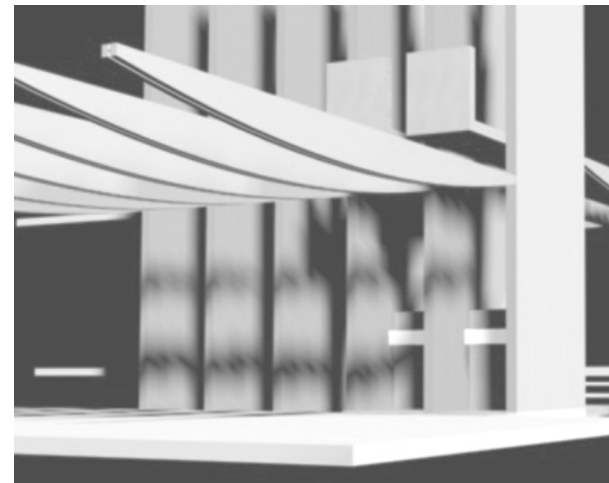
102. Outside teller space study
103. Drive-thru teller space study



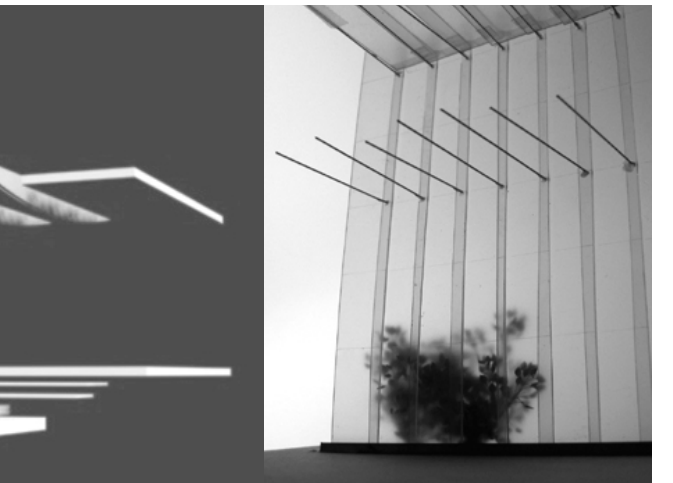
104



105



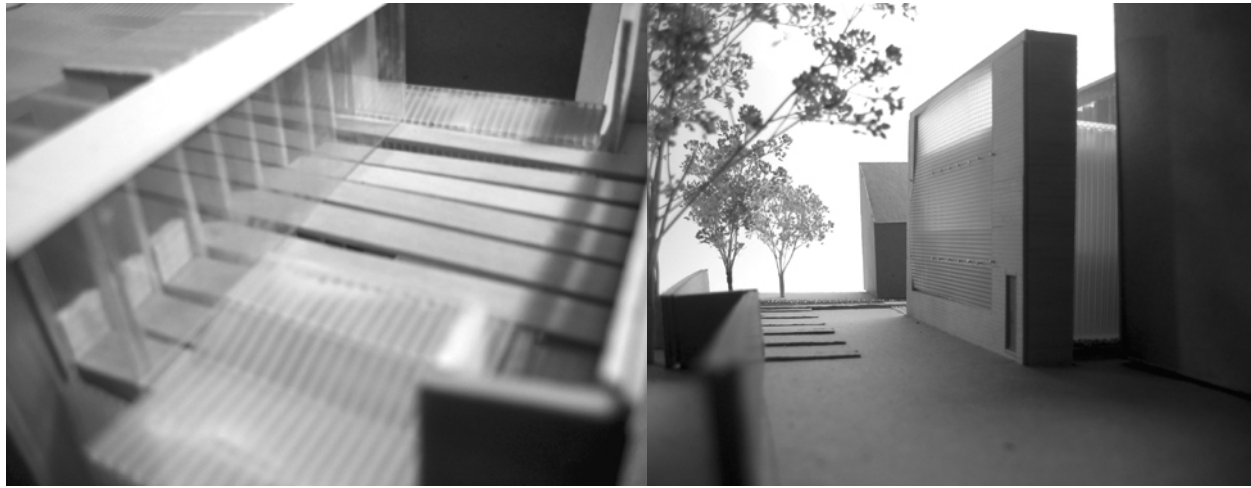
106



107

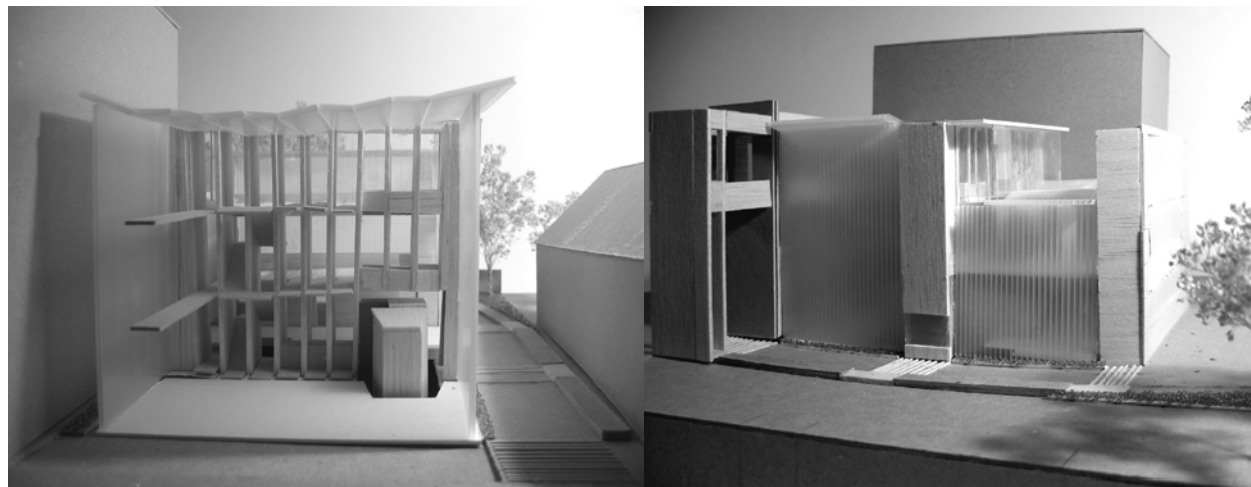
104. Third level study
105. Front elevation study

106. Spatial study
107. Glass wall study



108

109



110

111

108. Terrace study
109. Rear elevation study

110. Main hall study
111. Side elevation study

Nakagawa, Takeshi. Nihon no Ie.
TOTO publishing. Tokyo. 2003

Venturi, Robert . Learning from Las Vegas
The MIT Press. Cambridge. 1977



Bachelor of Architecture
Minor in Industrial Design
Virginia Polytechnic Institute and State University
1998-2003 Blacksburg, VA

International School of Bangkok
1996-1998 Bangkok, Thailand

Shirayuri Gakuen High School (L'Ecole du Lys Blanc)
1995-1996 Tokyo, Japan

Akiko Suzuki
akiko@vt.edu

