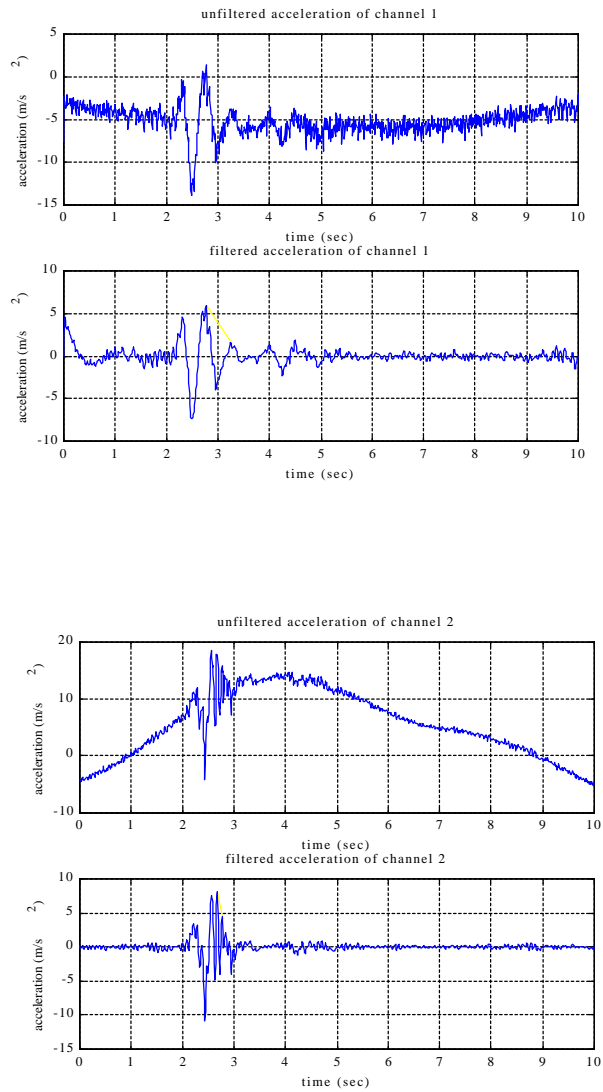


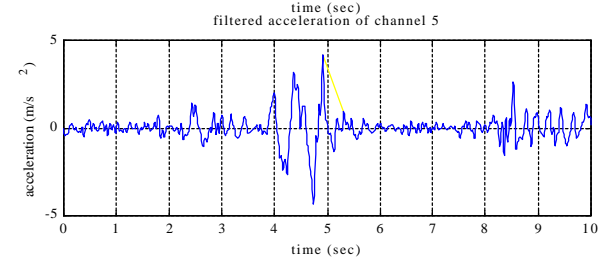
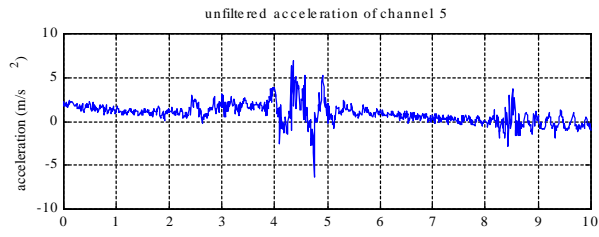
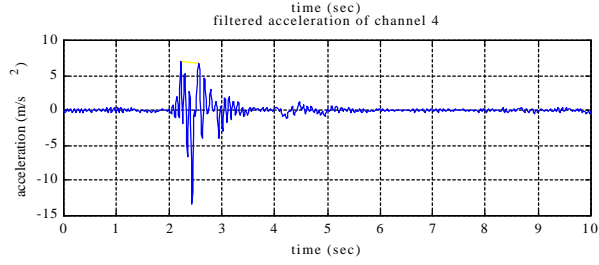
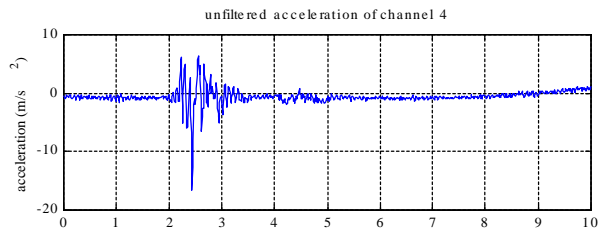
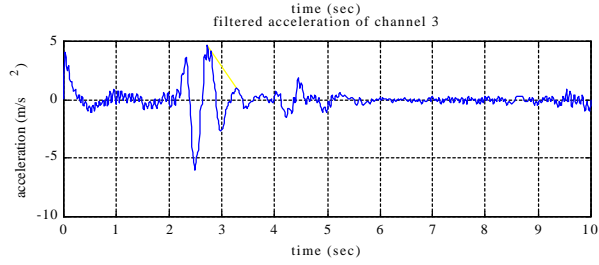
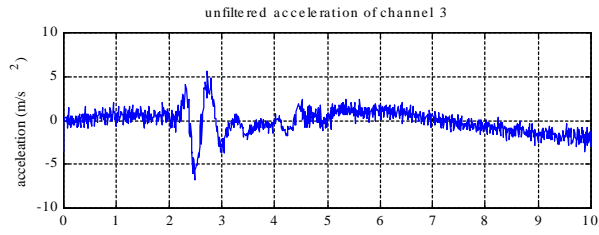
## Appendix 2

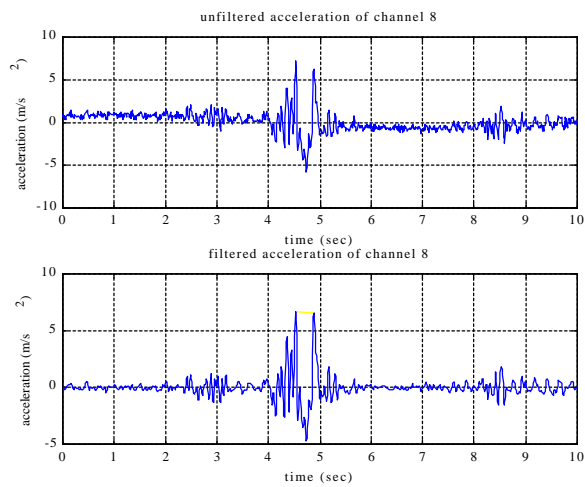
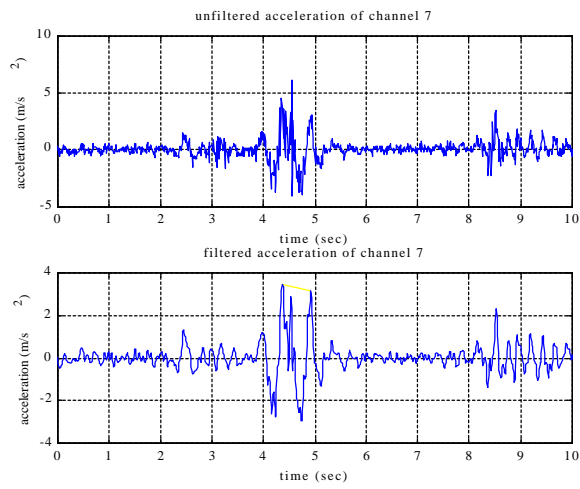
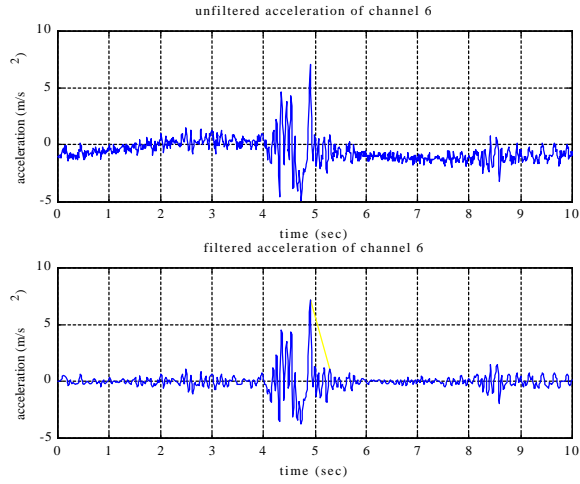
### Digitally Filtered and Unfiltered Acceleration Data Sample Sets for Transient Tests

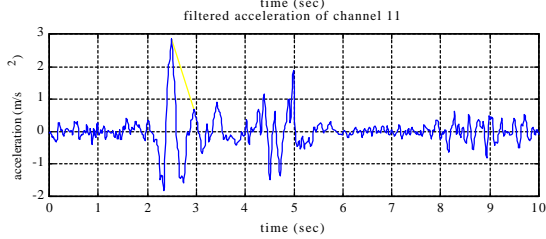
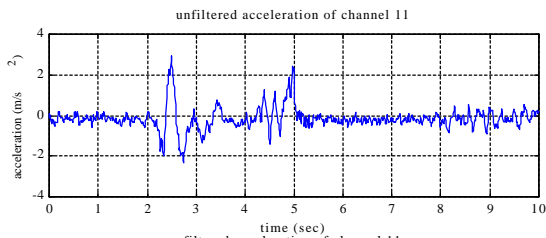
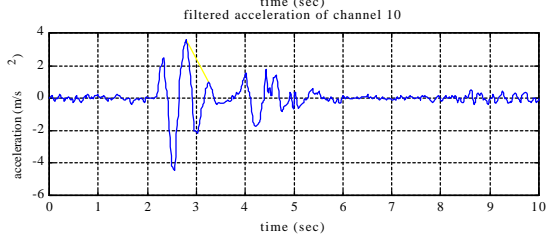
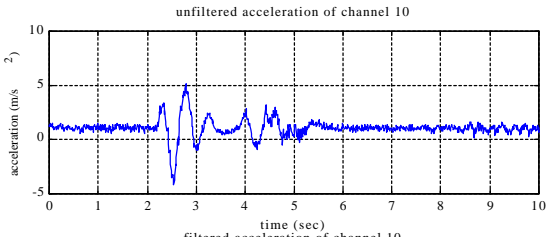
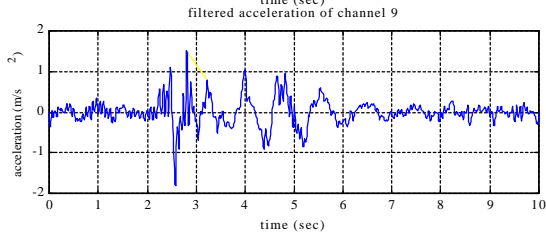
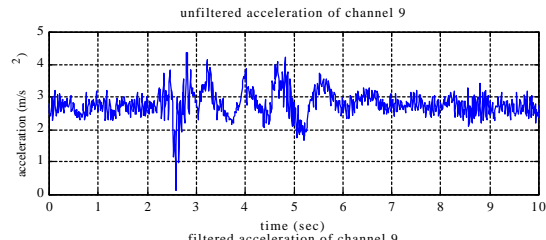
- 2a: MR Dampers w/Skyhook Control
- 2b: MR Dampers Continuously On
- 2c: MR Dampers Continuously Off
- 2d: Original Dampers

## Appendix 2a: Digitally Filtered and Unfiltered Acceleration Data Sample Set for Test Vehicle with MR Dampers and Skyhook Control Policy - Transient Test

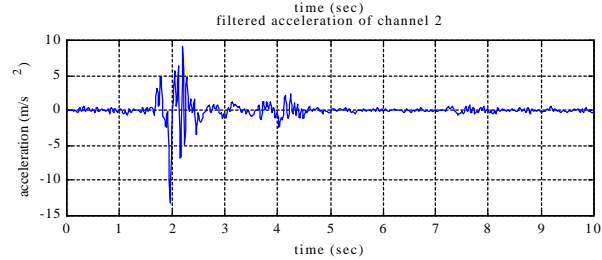
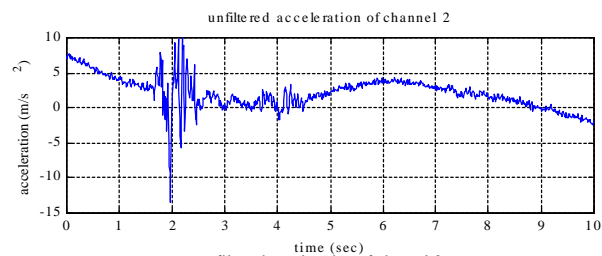
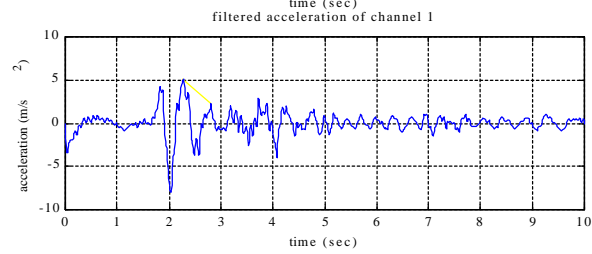
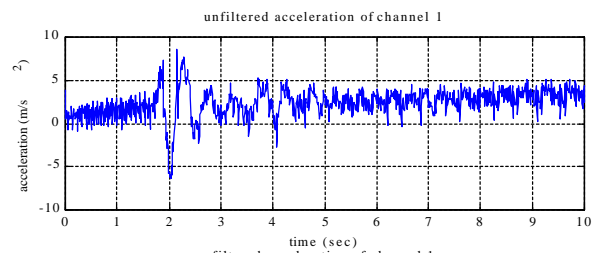


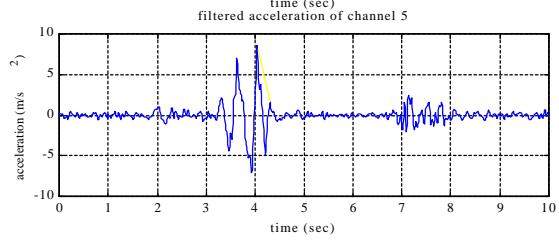
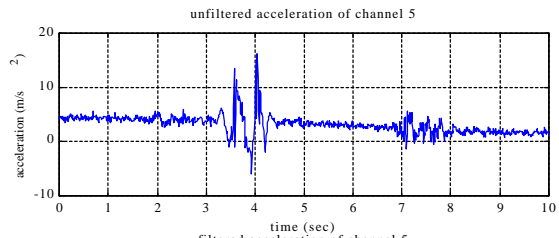
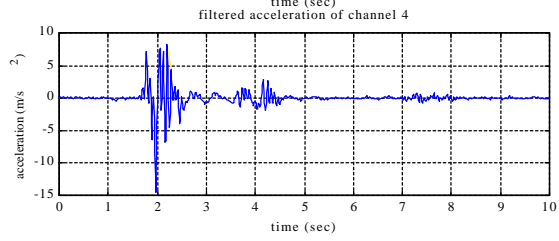
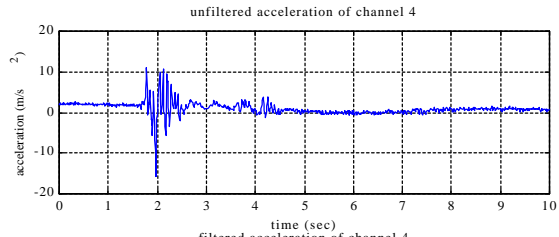
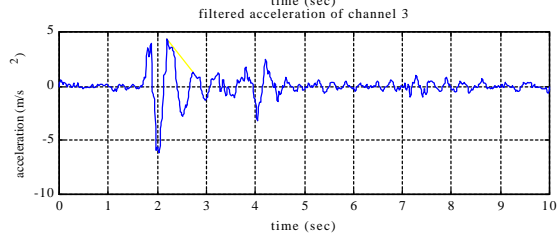
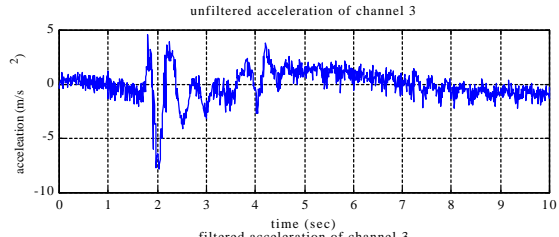


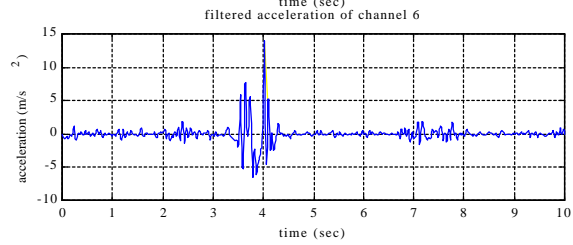
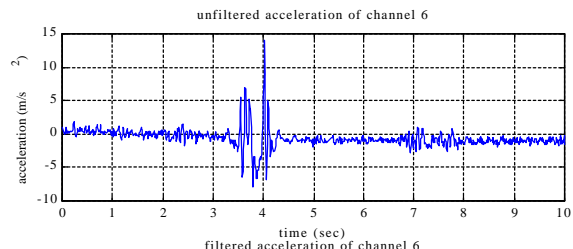
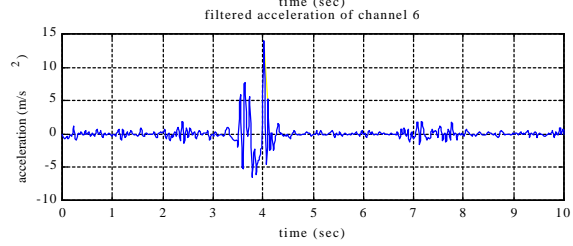
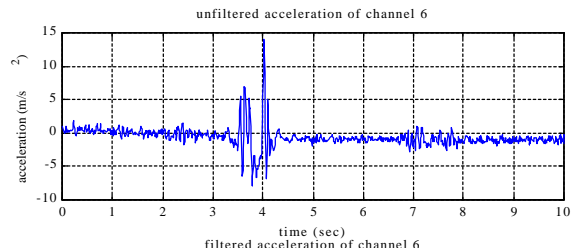
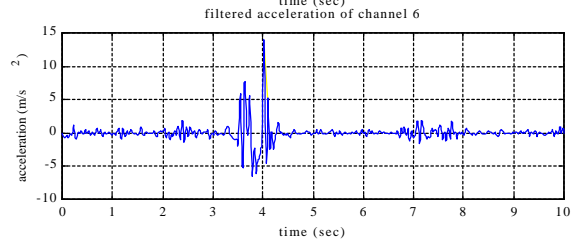
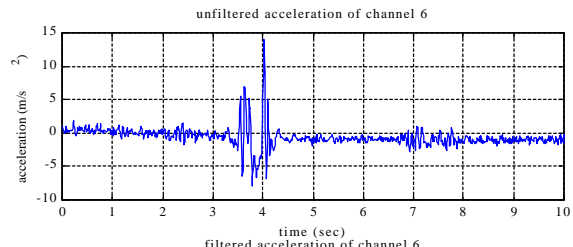




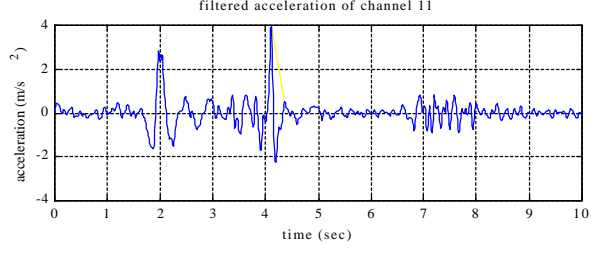
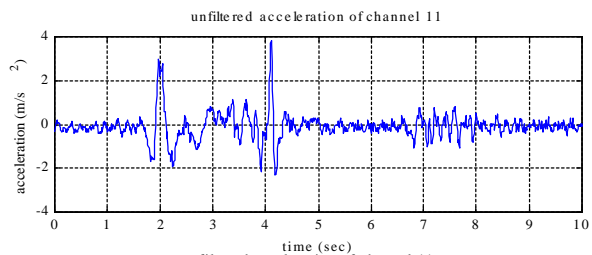
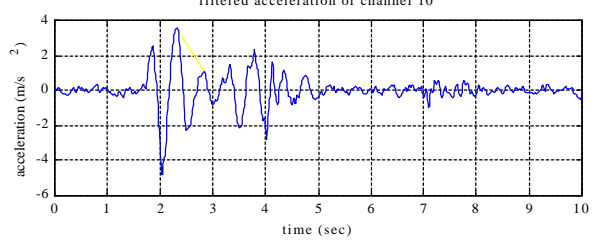
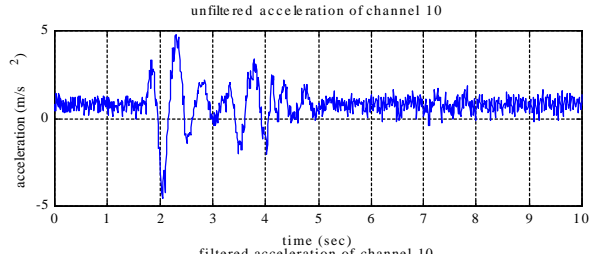
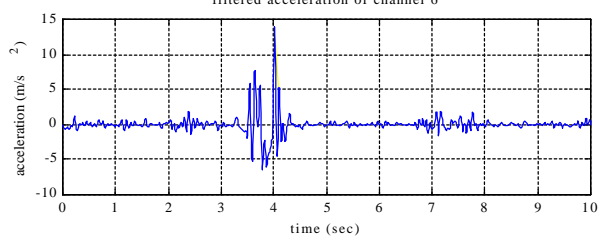
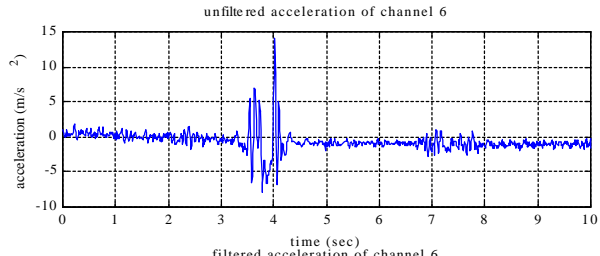
## Appendix 2b: Digitally Filtered and Unfiltered Acceleration Data Sample Set for Test Vehicle with MR Dampers Operated Continuously On -Transient Test



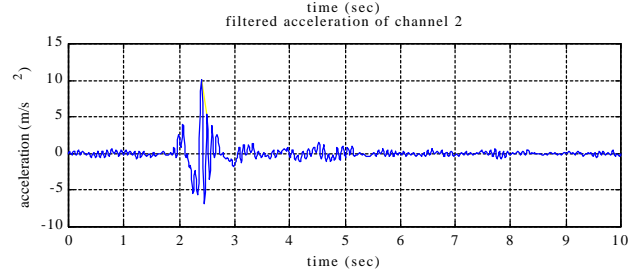
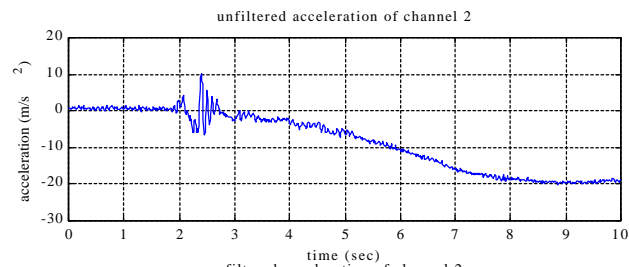
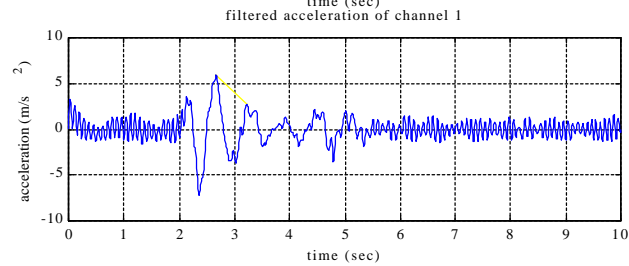
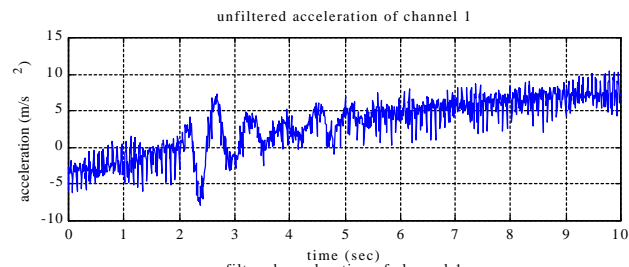


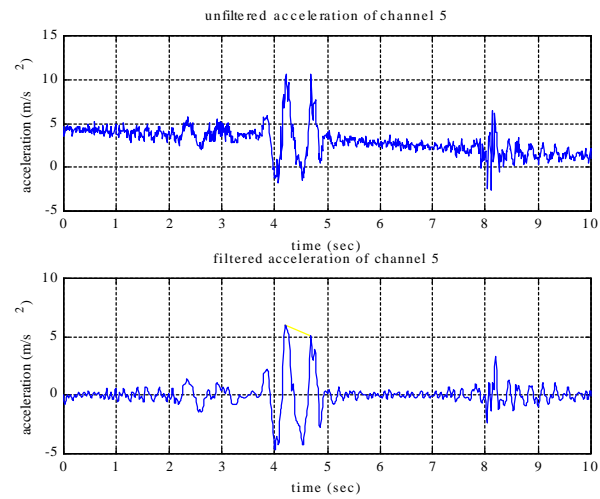
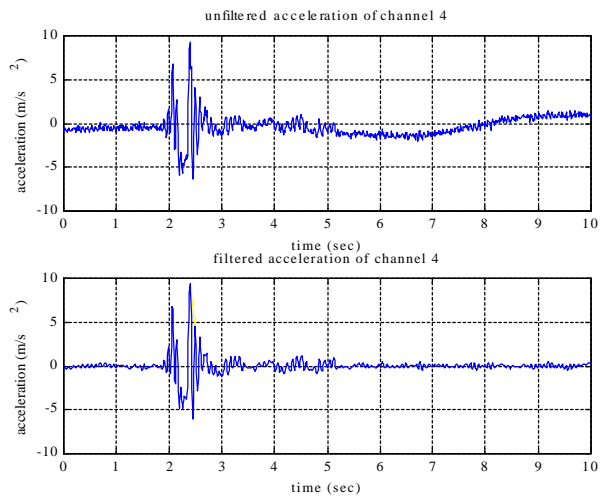
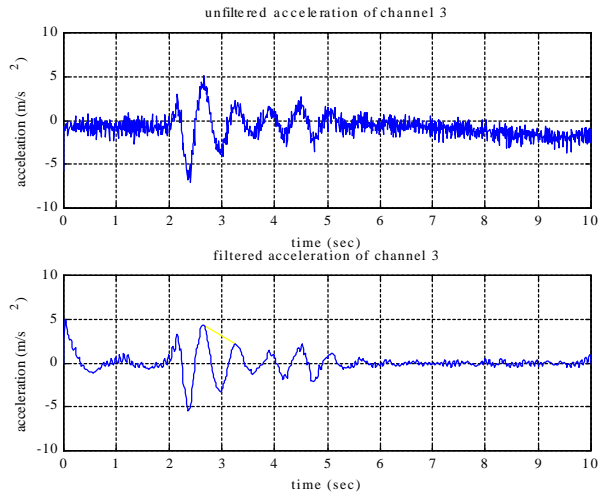


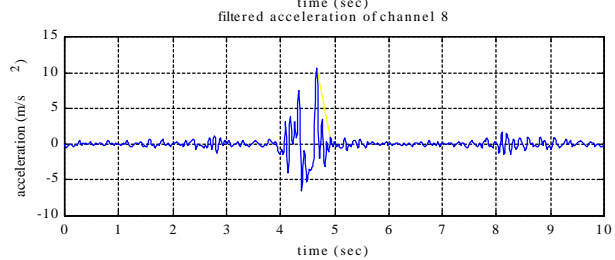
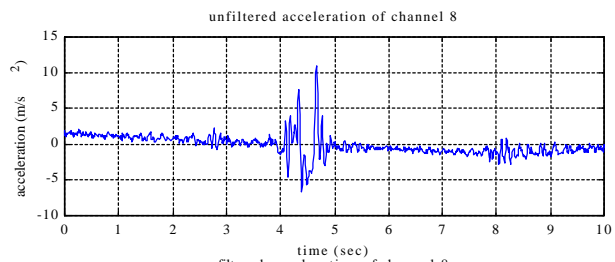
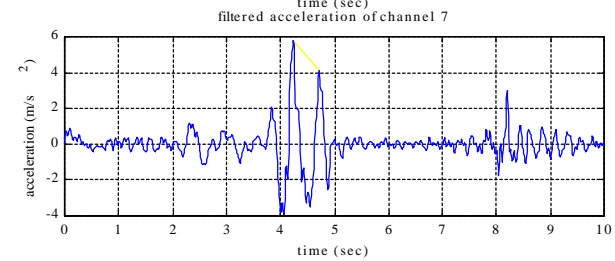
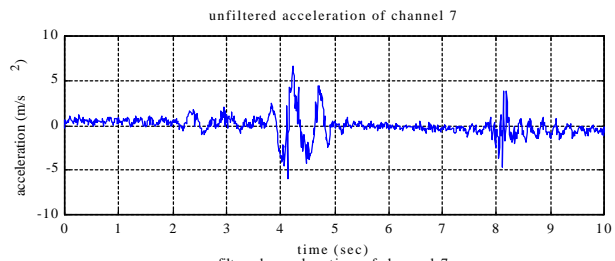
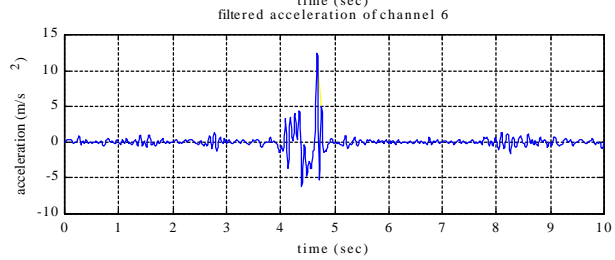
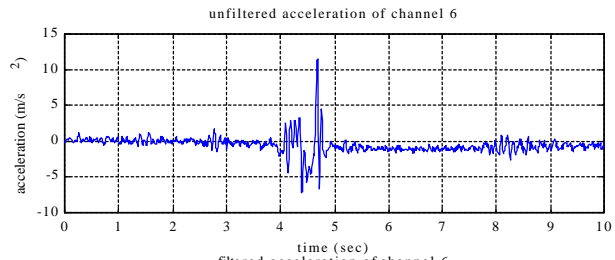


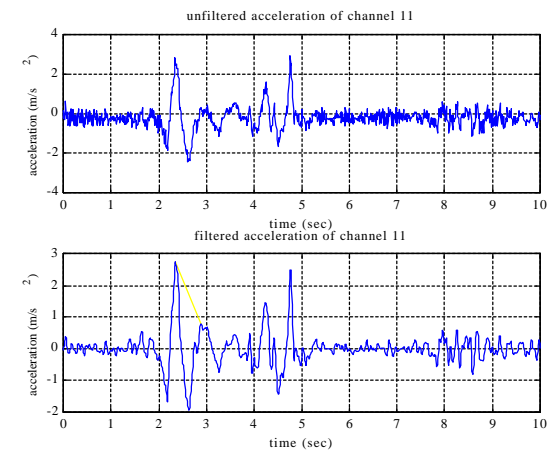
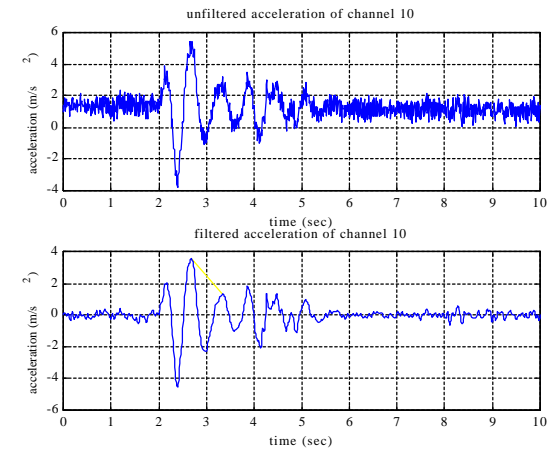
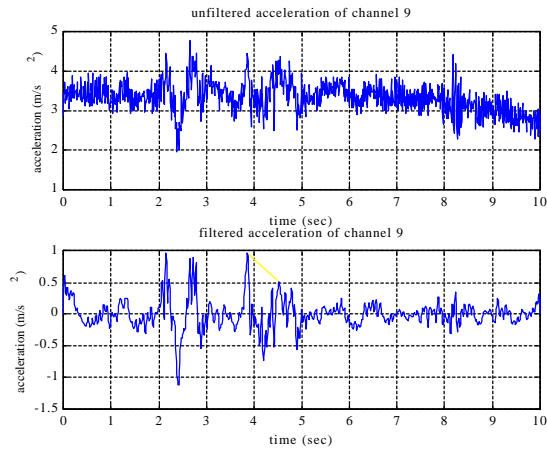


## Appendix 2c: Digitally Filtered and Unfiltered Acceleration Data Sample Set for Test Vehicle with MR Dampers Operated Continuously Off - Transient Test









## Appendix 2d Digitally Filtered and Unfiltered Acceleration Data Sample Set for Test Vehicle with Original Dampers -Transient Test

