

Tradition

---



## Drawings

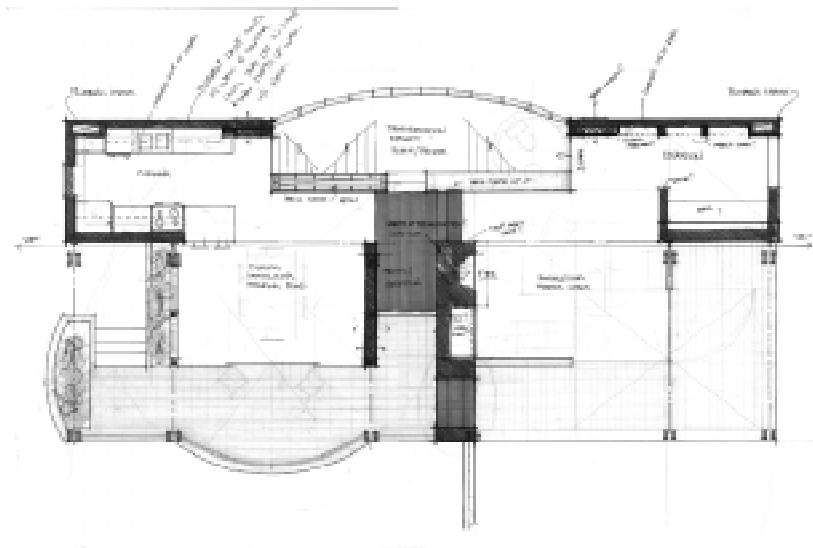
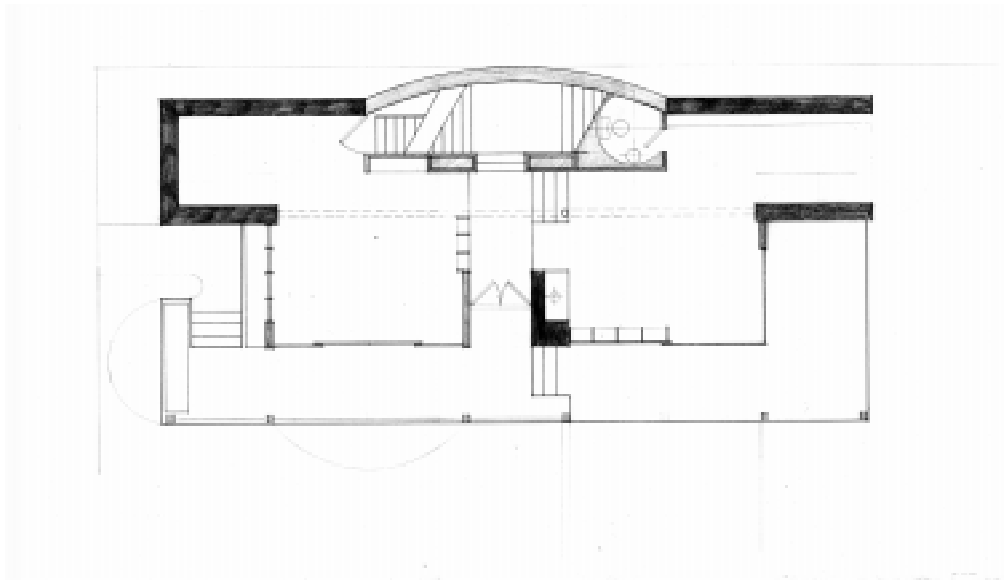
The following series of drawings represent the efforts to explore this project, showing the progression of the design.

The following pages contain:

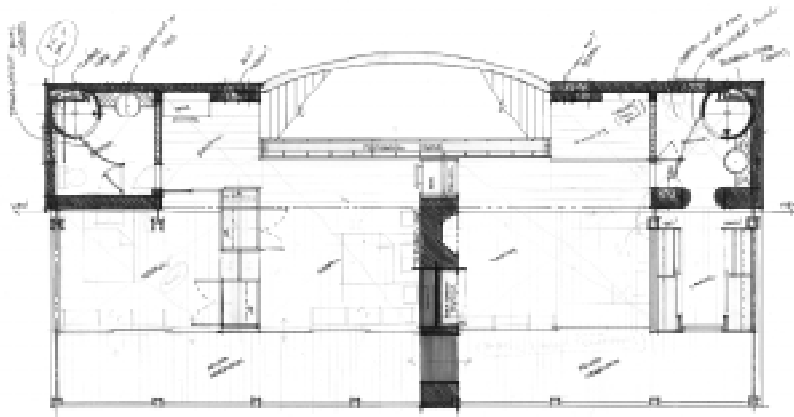
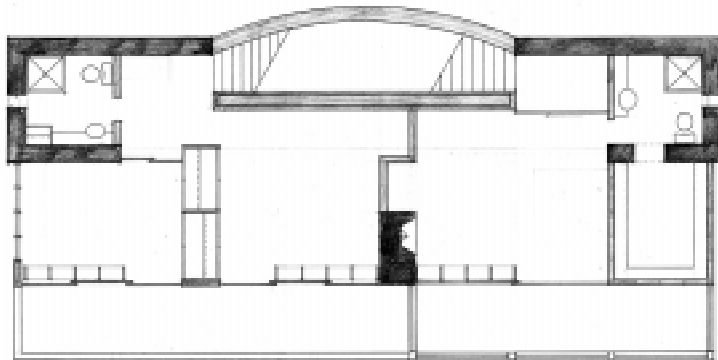
- Ground Level Plan
- Second Level Plan
- Front Elevation
- Right Side Elevation
- Rear Elevation
- Left Side Elevation
- Building Section at Stair
- Building Section at Kitchen
- Site Plan



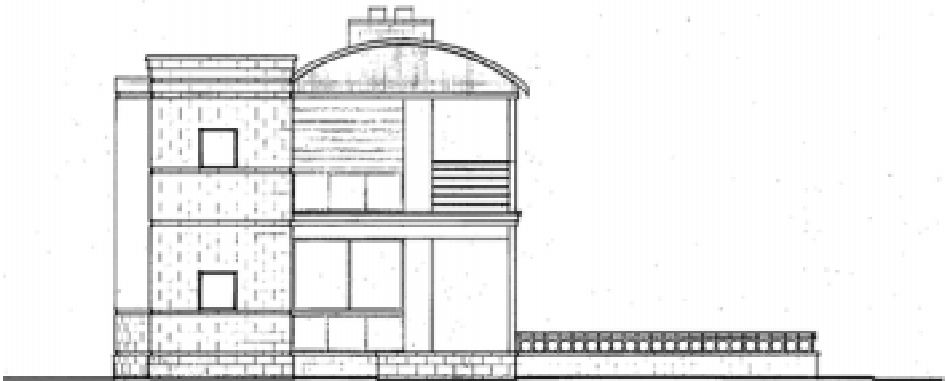
## Ground Level Plan



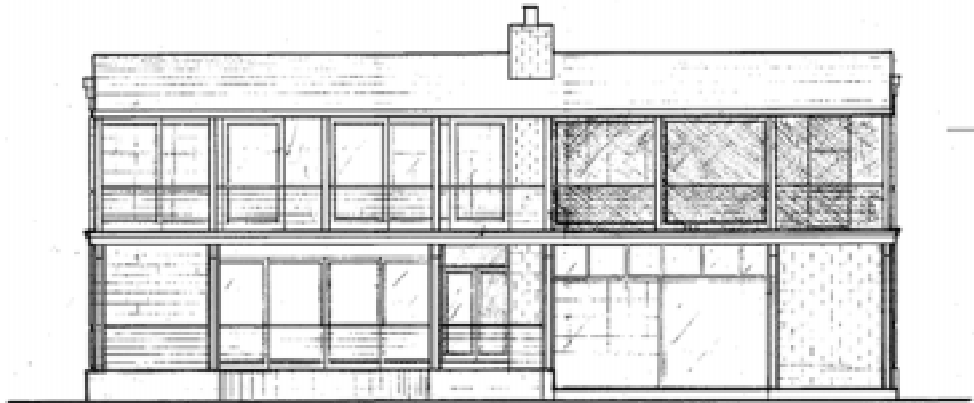
## Second Level Plan



## Front Elevation

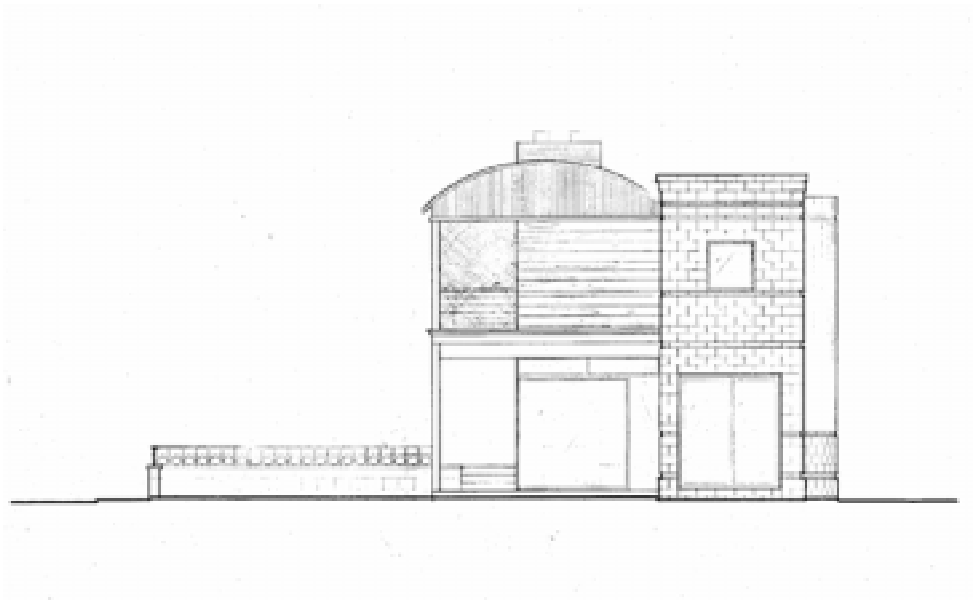


## Right Side Elevation

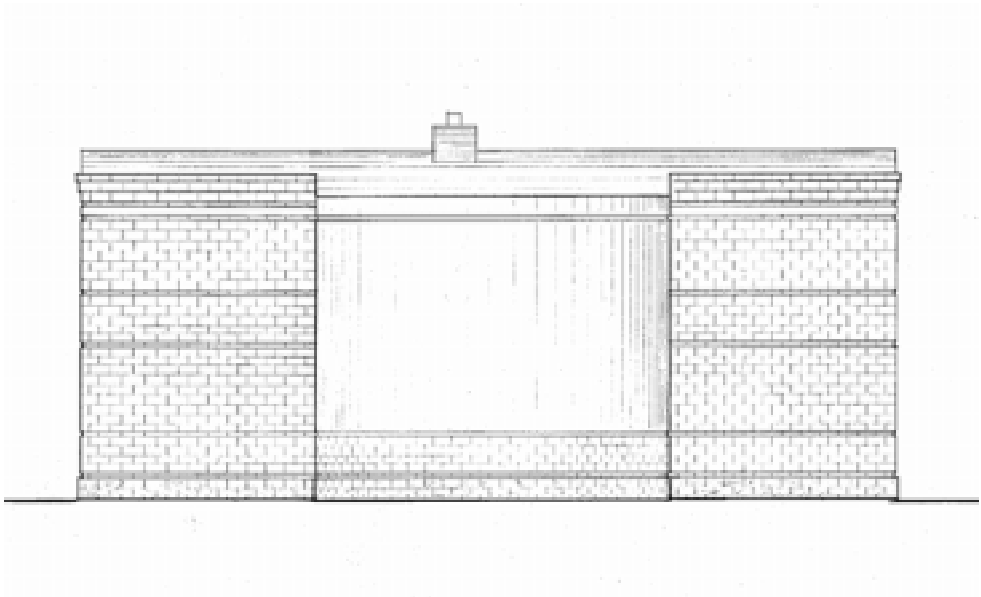




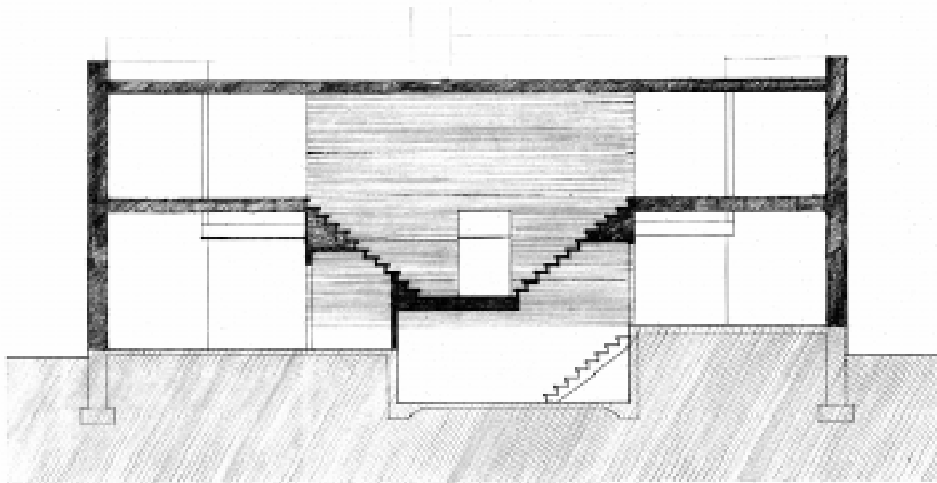
## Rear Elevation



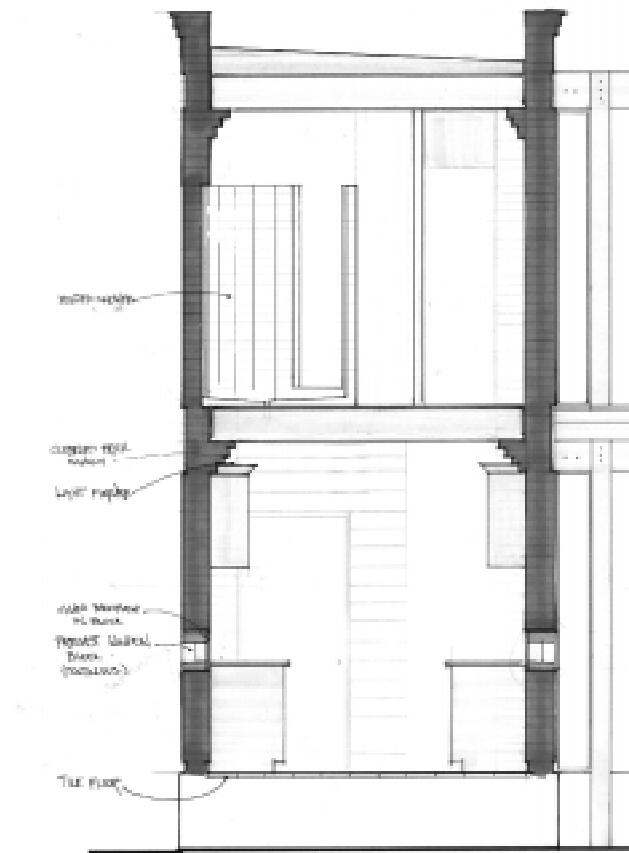
## Left Side Elevation



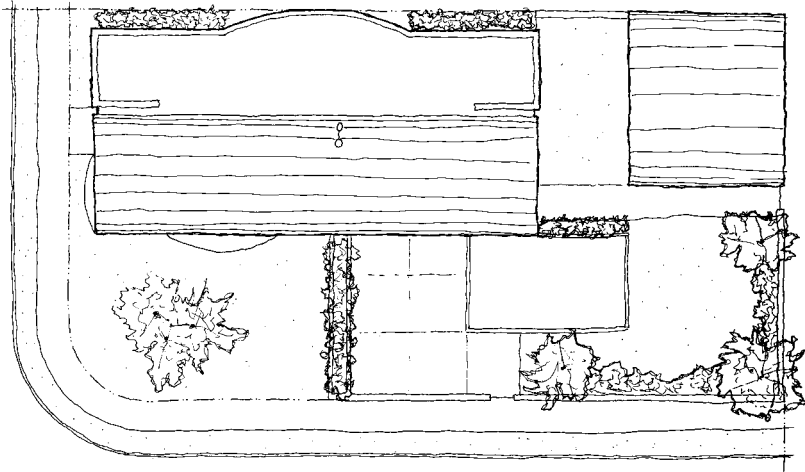
## Building Section at Stair



## Building Section at Kitchen



## Site Plan



The nature of the house in conjunction with the small lot makes the yard an important extension of the house. The yard is zoned into three basic areas: the formal up front, the casual in the center, and the more private to the rear of the lot.



The landscaping within each realm has an important role in capturing or expressing these different qualities. In the more formal realm the landscaping should be more formal while in the private realm it may be more lush and encompassing. These qualities are essentially an extension of the ideas within the house and should exist within the realm of the yard.