

Inhabiting Structure: An Elementary School Campus

Allison Geers

Thesis submitted to the faculty of the Virginia Polytechnic
Institute and State University in partial fulfillment of the
requirements for the degree of

Master of Architecture
In Architecture

Hans Rott
Committee Chair

Donna Dunay

May 8, 2012
Blacksburg, Virginia

Keywords: Inhabit, Structure, School

Inhabiting Structure:

An Elementary School Campus

Allison Geers

Abstract

This thesis explores the idea of creating inhabitable spaces within the structure of a building. The inhabitation can range from physical to imaginative.

Abstract

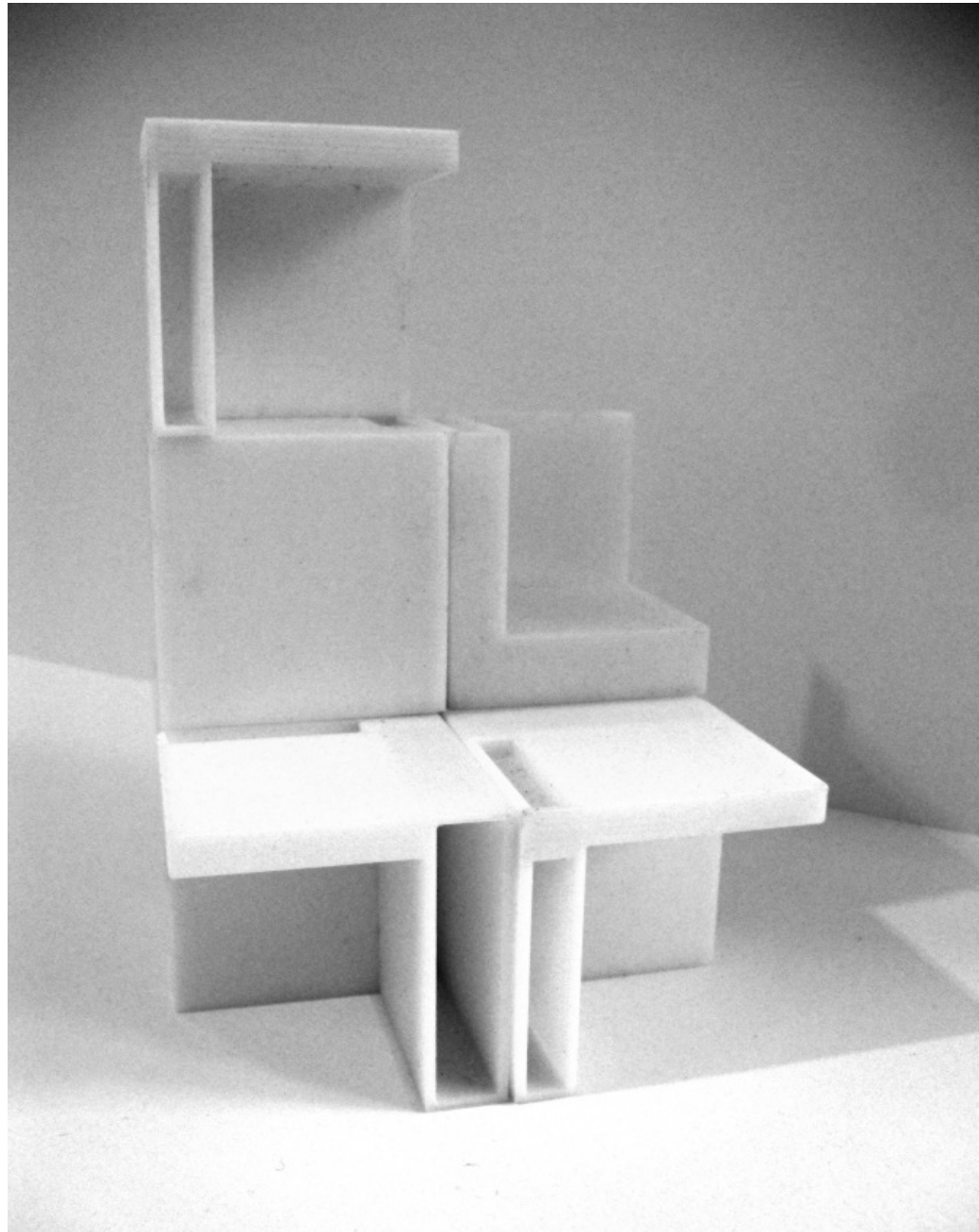
I'd like to thank my parents for being supportive of my endeavor.
Without their encouragement I would not be where I am today.

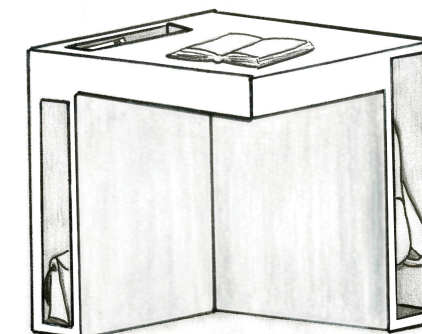
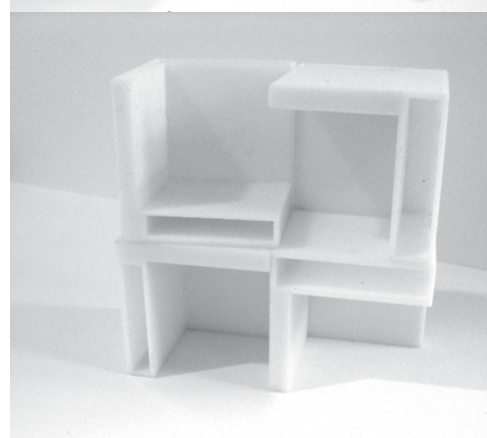
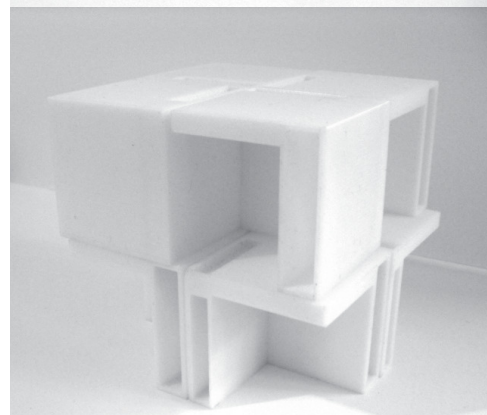
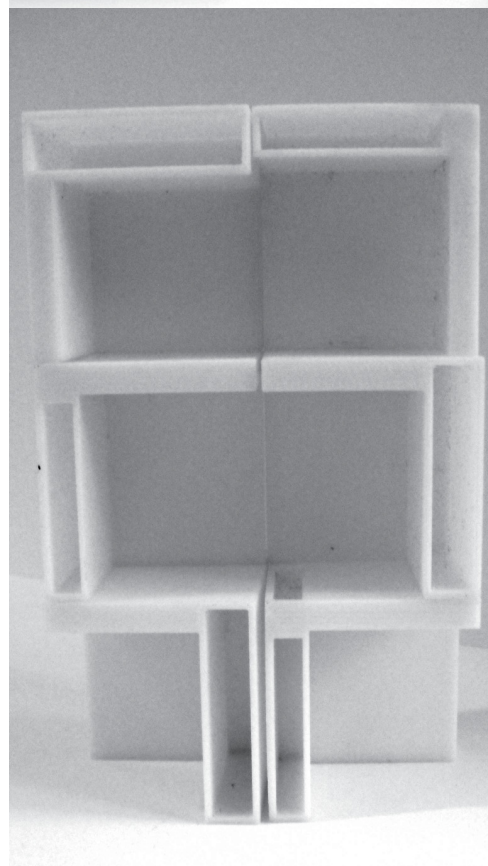
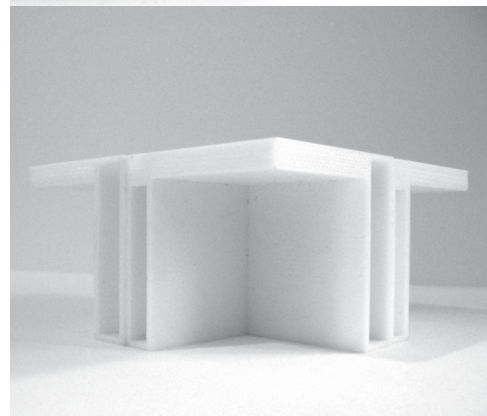
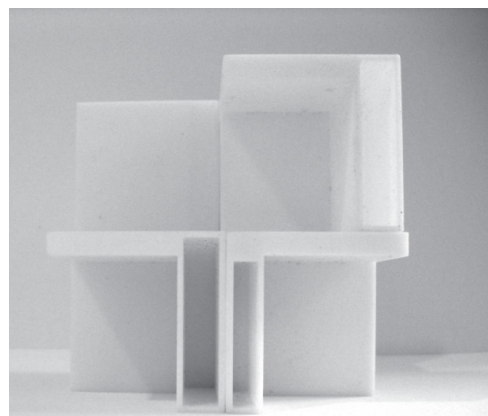
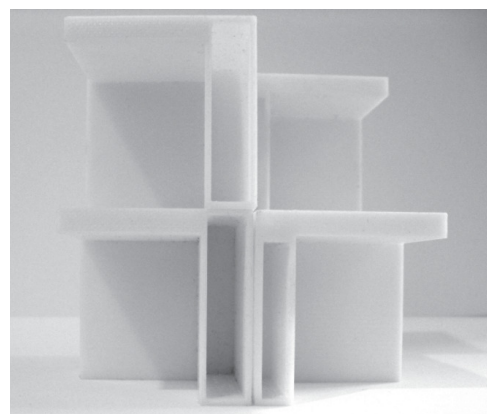
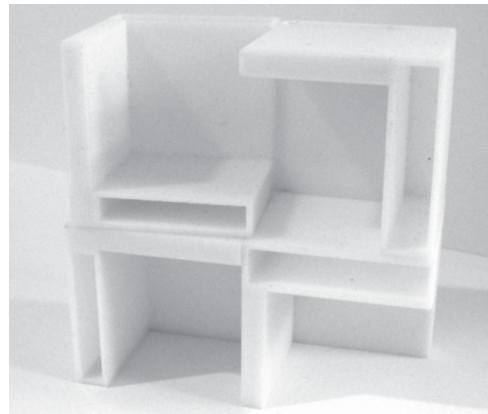
I'd also like to thank my Blacksburg family for their generosity and
desire to see me succeed.

Lastly, I'd like to thank my committee for
encouraging me to seek out the answers to my questions on my own.

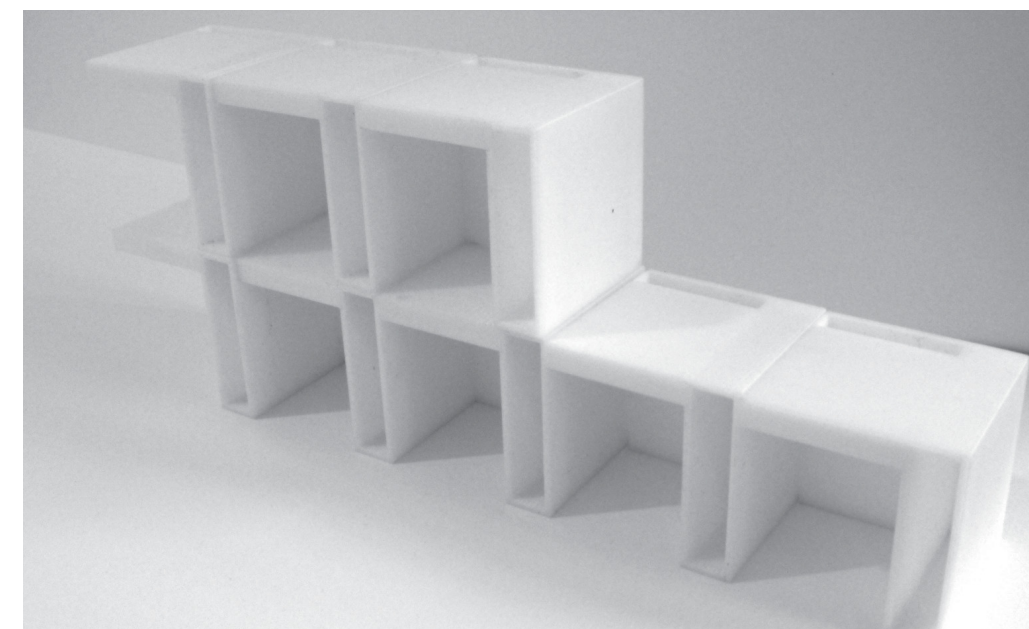
Acknowledgements	iii
Desk	2
Site Plans	3-4
Foundation Plan	5
Floor Plan	6
Typical Elementary Classroom	7-8
Typical Middle Classroom	9-10
Elementary Library	11
Cafeteria	12
Wall Sections	13-14
Building Sections	5-22
Elevation	23-24
Axonometric Sketches	25-26
Perspectives	27-32

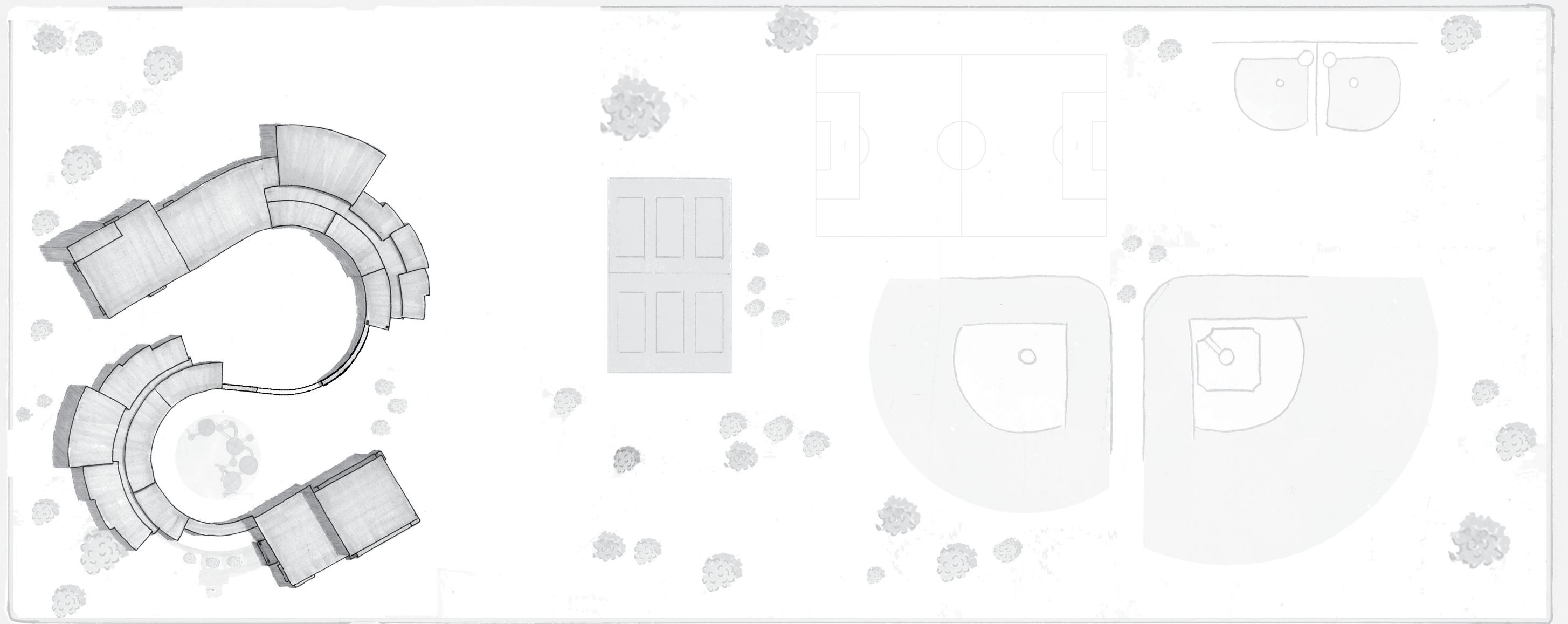
Table of Contents



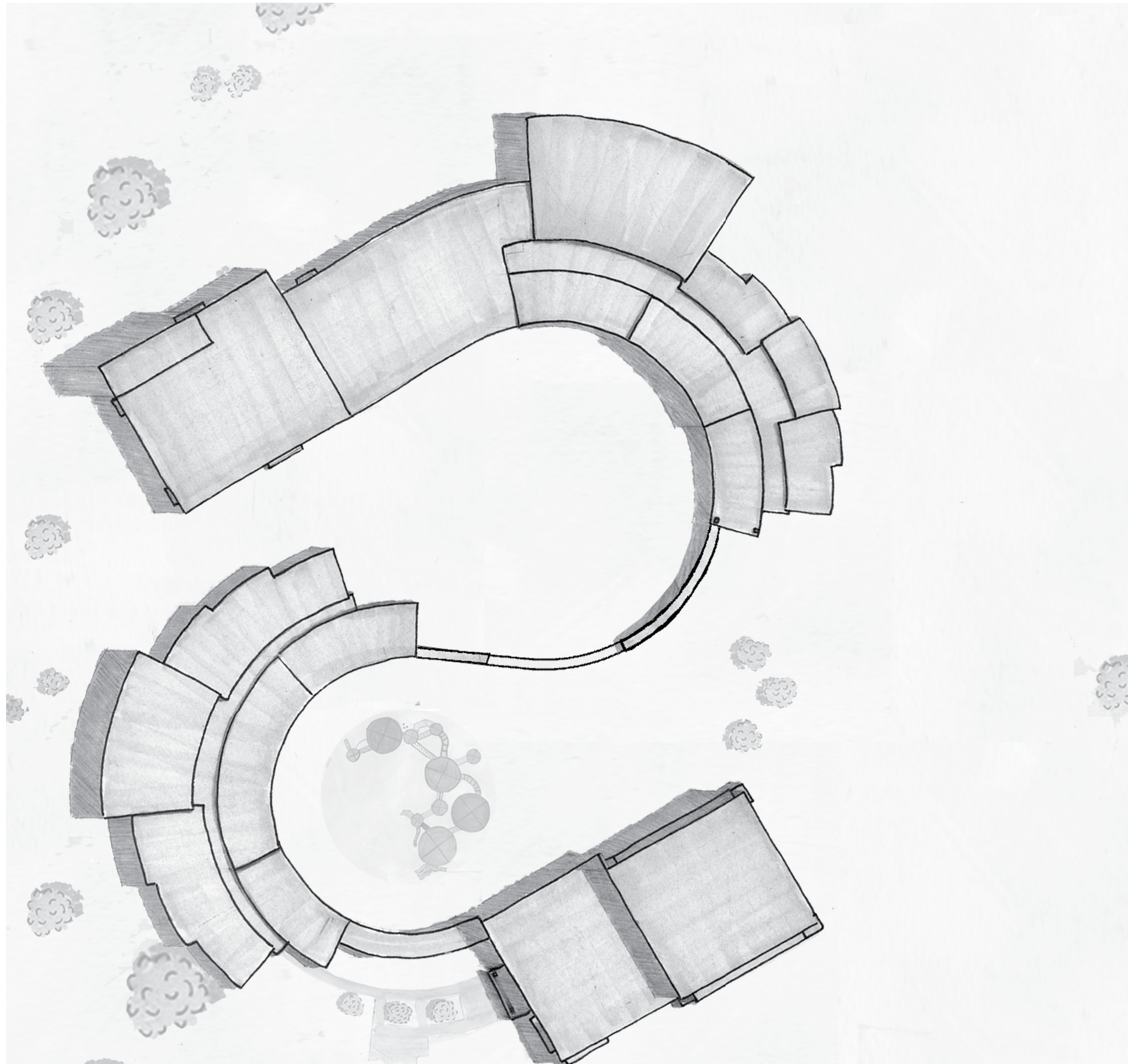


The idea of inhabiting structure originated with a desire to exclude the typical cubby systems from classroom design. Space is carved out of a desk module to accommodate all of the students necessities. The desk module is designed to fit together in multiple configurations to conform to the desired use of the teacher and student.



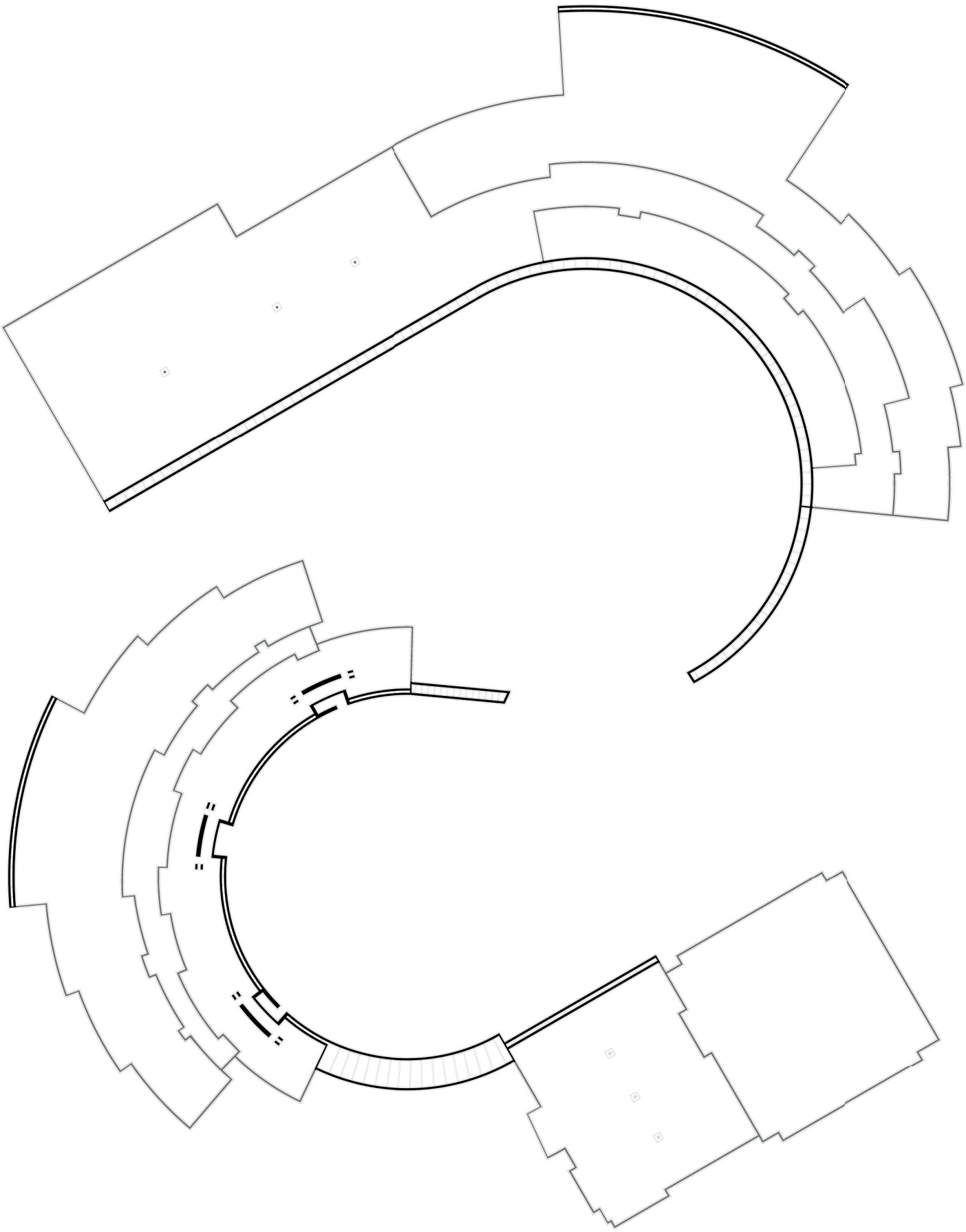


Site Plan: 1/128" = 1' - 0"

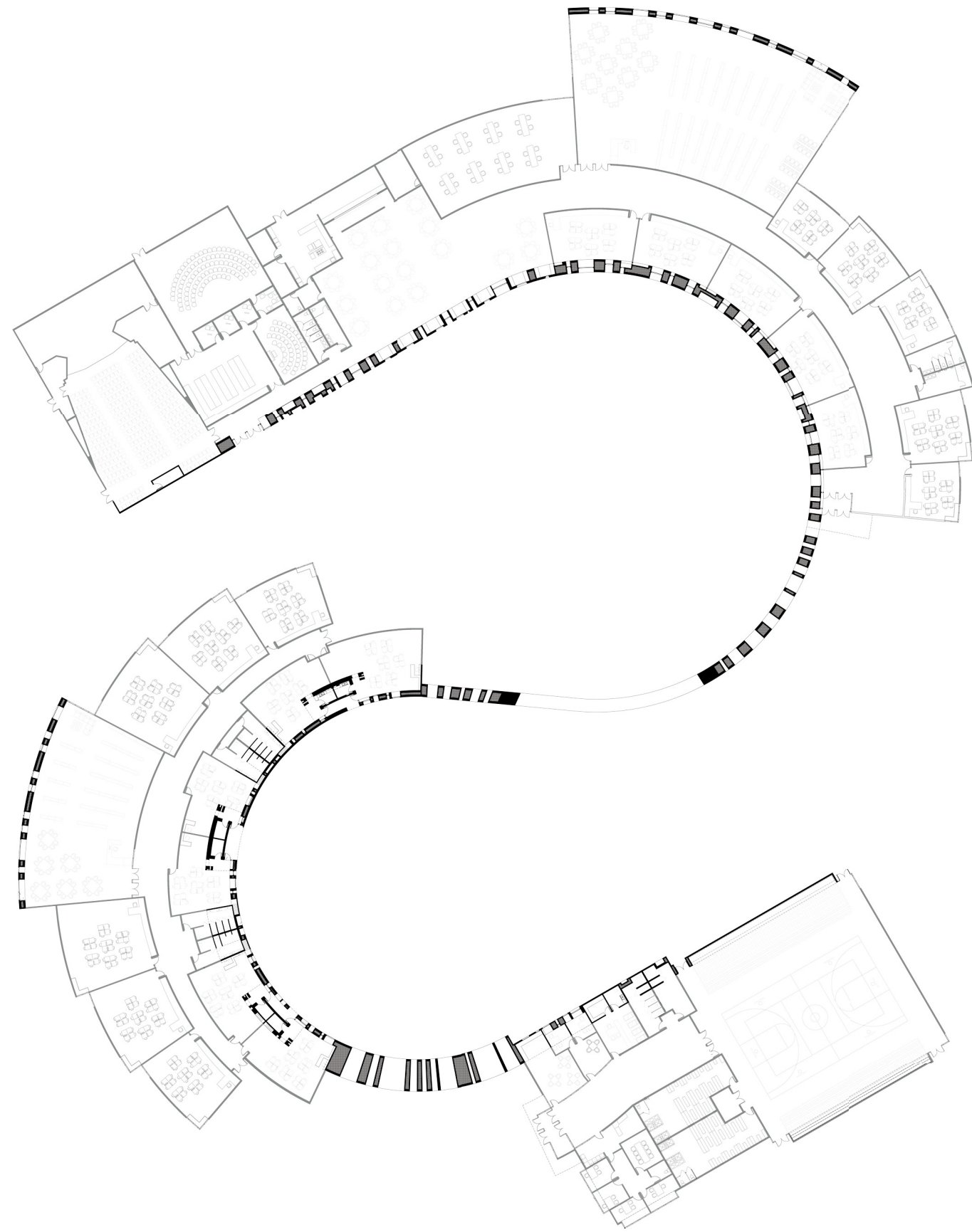


The elementary school campus consists of a Pre-K through 5th grade building, a 6th through 8th grade building, and an administrative building. The buildings are connected by an inhabitable wall, physically or visually. The wall creates two interconnected courtyards enclosing play fields. The wall becomes a play fixture for the courtyard.

Site Plan: 1/64" = 1' - 0"



Foundation Plan: 1/64" = 1' - 0"



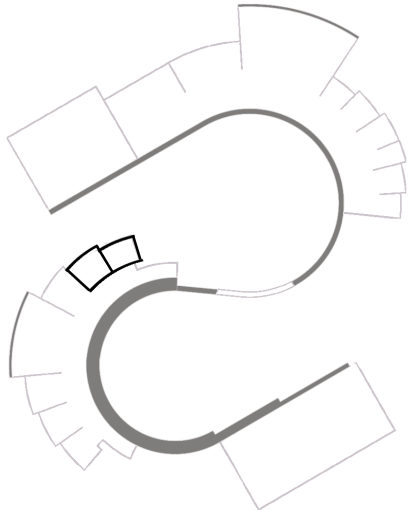
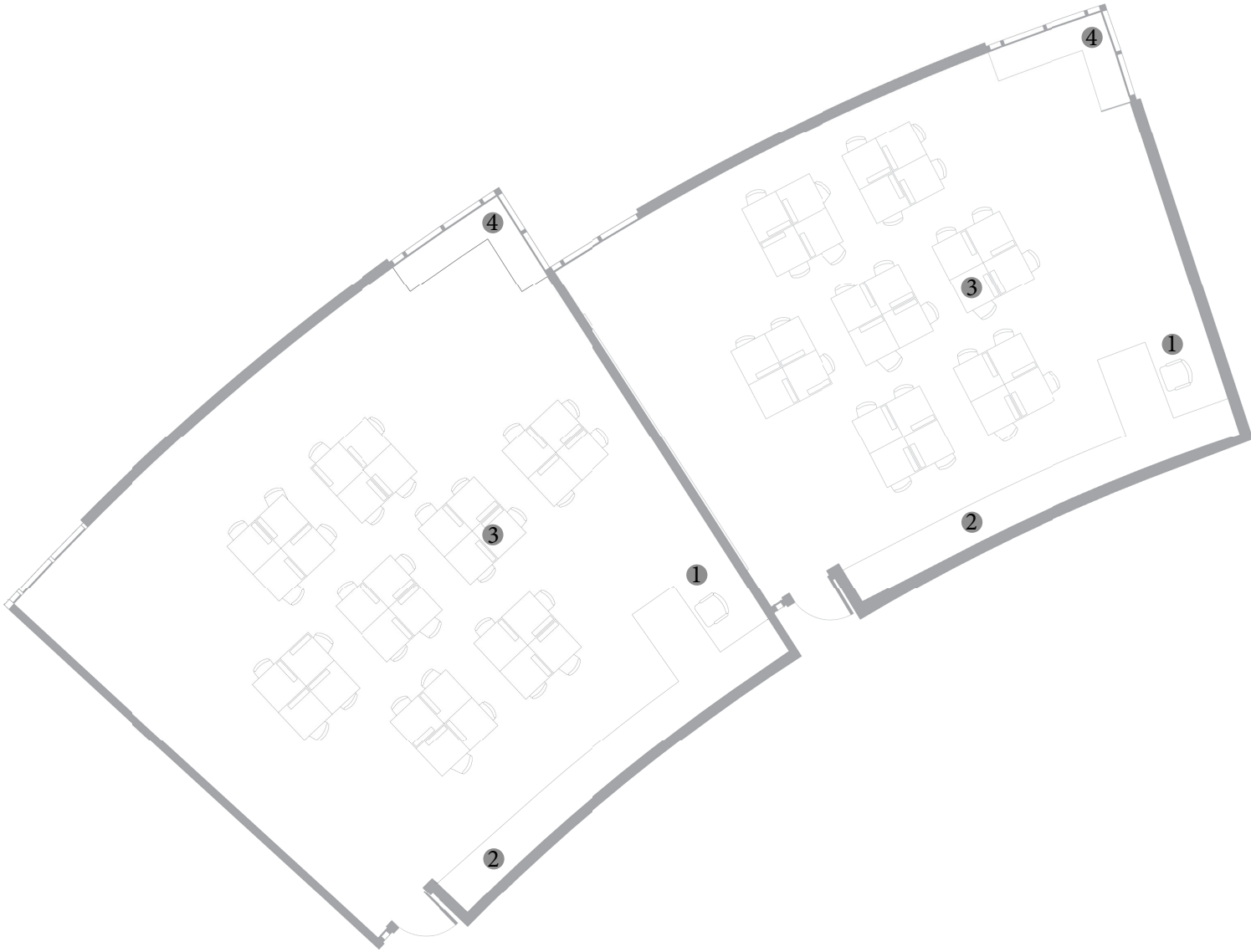
Floor Plan: 1/64" = 1' - 0"

Typical Elementary Classroom:

Exterior

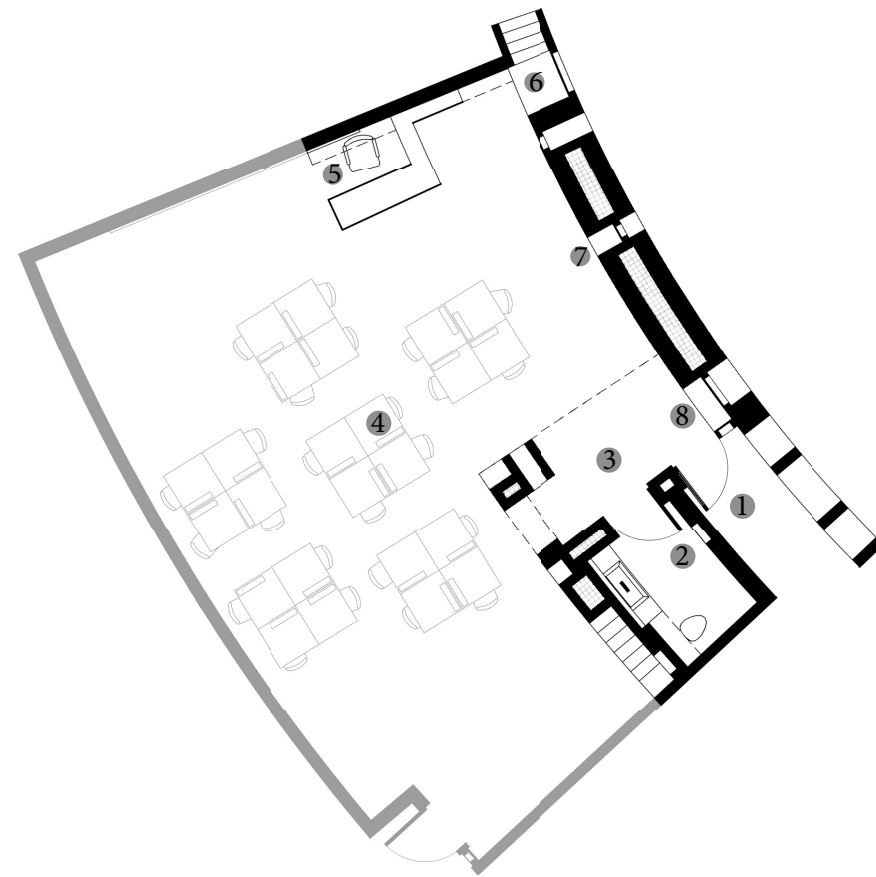
3/32" = 1' - 0"

- 1 Incorporated teacher's desk.
- 2 Cabinets and display shelves.
- 3 Cube desk.
- 4 Corner window and bench.

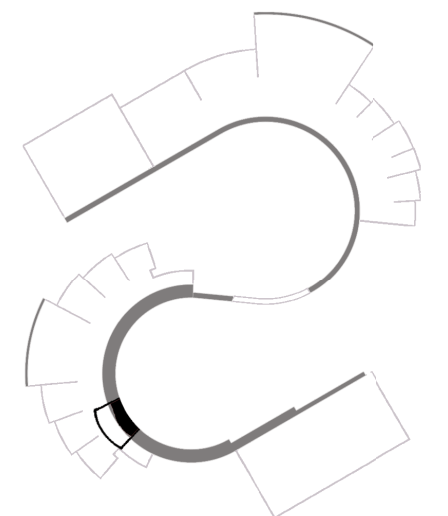


Typical Elementary Classroom: Courtyard

3/32" = 1' - 0"



- Covered entry from playground. ①
- Bathroom or storage closet. ②
- Play space above. ③
- Cube desk. ④
- Incorporated teacher's desk and shelves. ⑤
- Stair to play space. ⑥
- Display nooks. ⑦
- Bench. ⑧

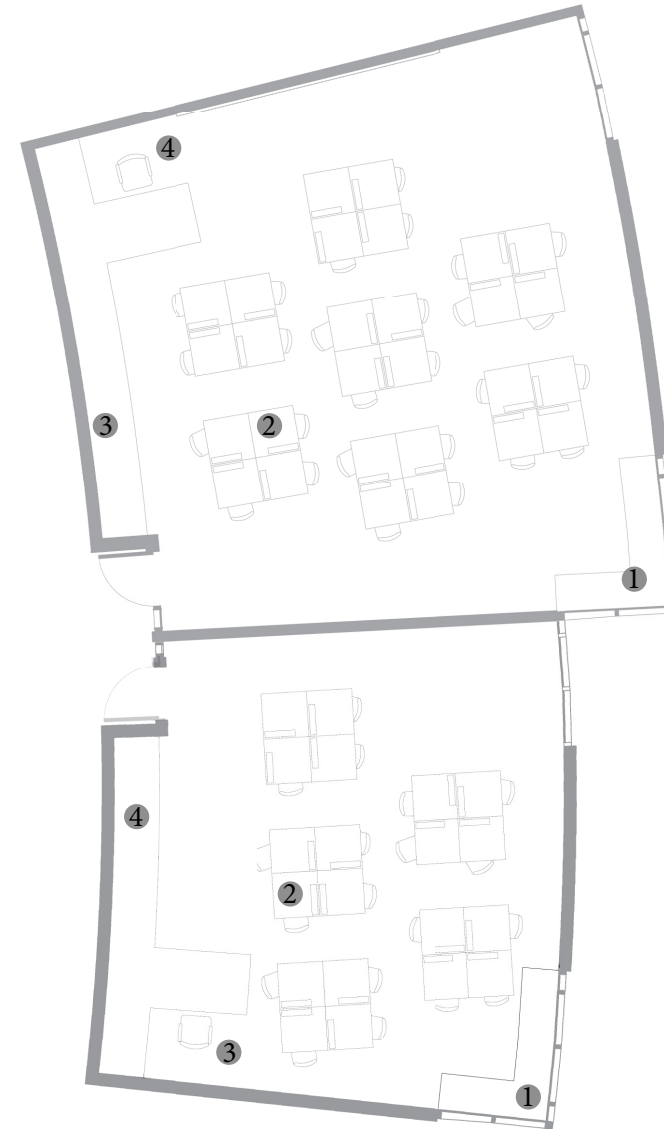
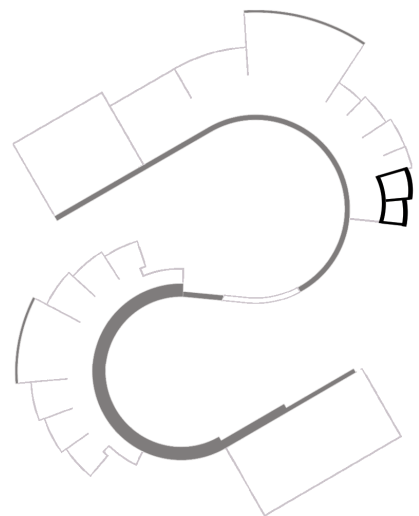


Typical Middle Classroom:

Exterior

3/32" = 1' - 0"

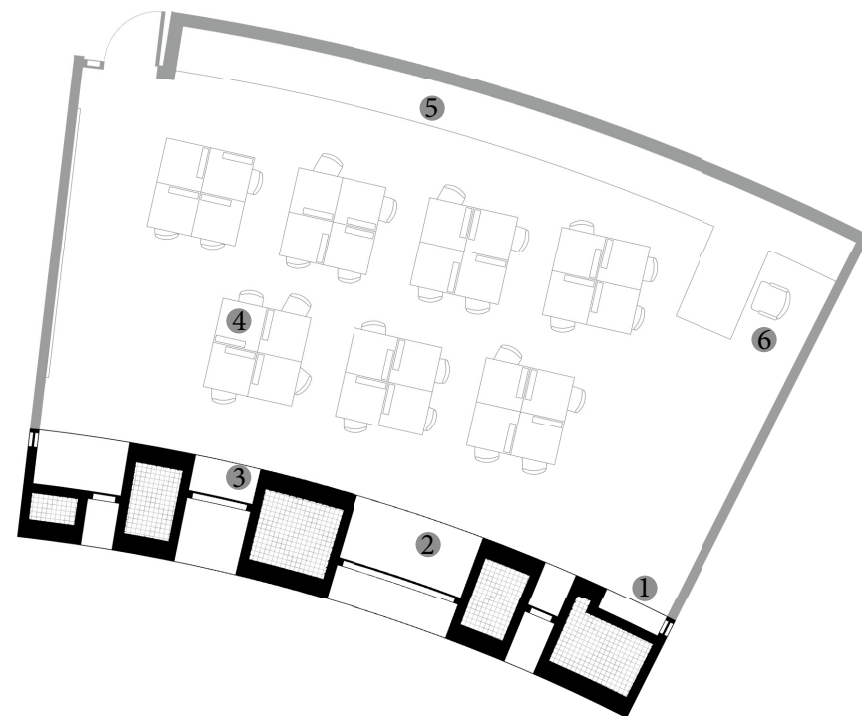
- ① Corner window and bench.
- ② Cube desk.
- ③ Cabinets and display shelves.
- ④ Incorporated teacher's desk.



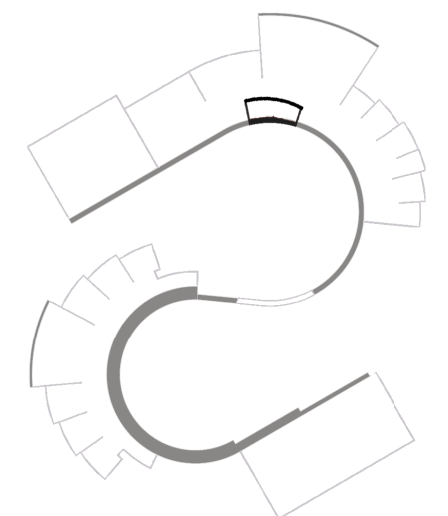
Typical Middle Classroom:

Courtyard

3/32" = 1' - 0"



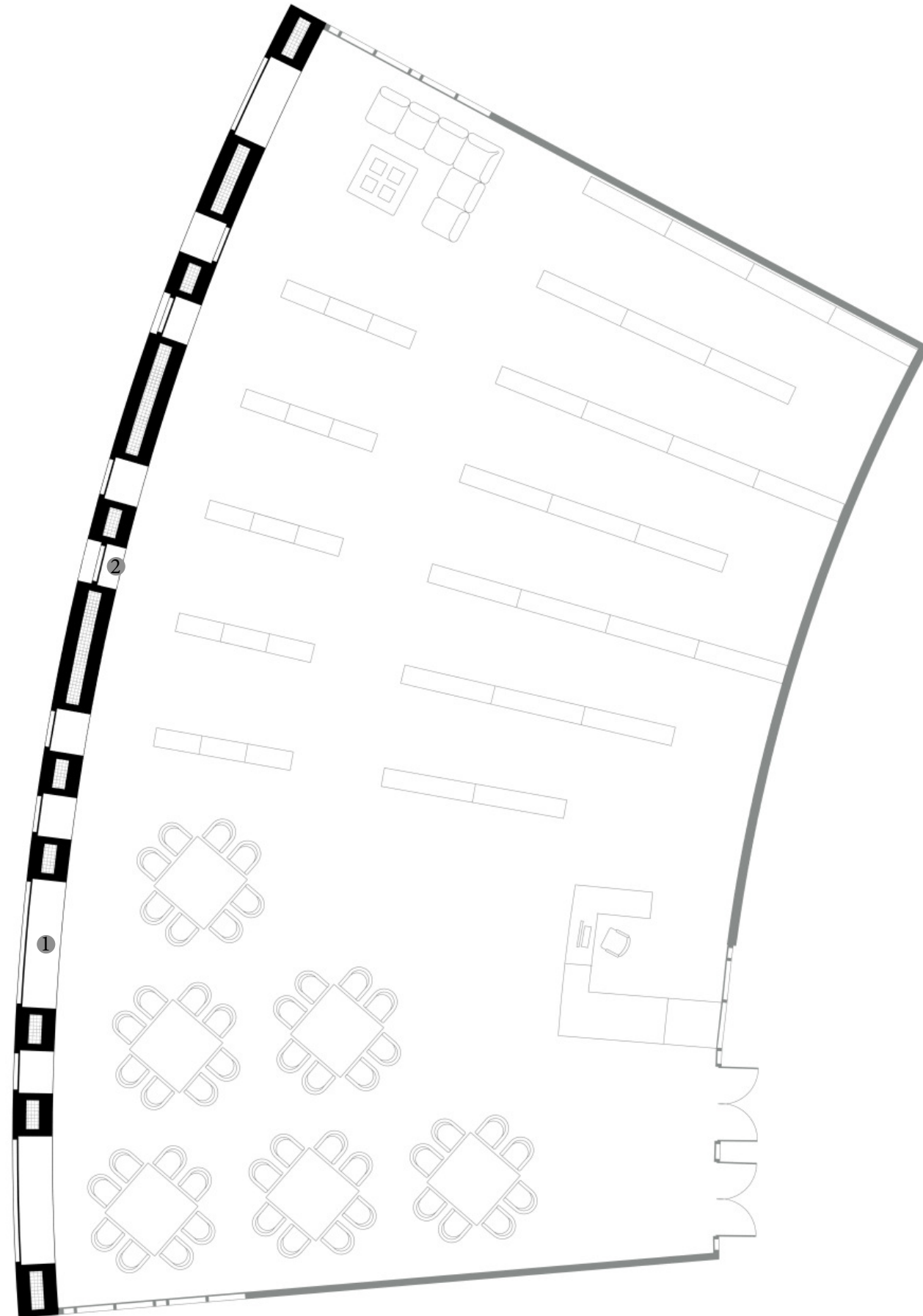
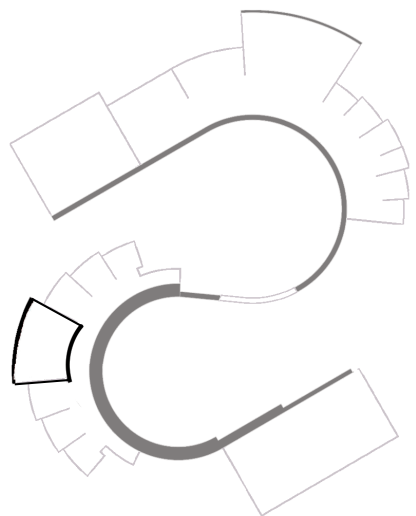
- Bench. ①
- Play space. ②
- Display nook. ③
- Cube Desk. ④
- Cabinets and display shelves. ⑤
- Incorporated teacher's desk. ⑥



Elementary Library:

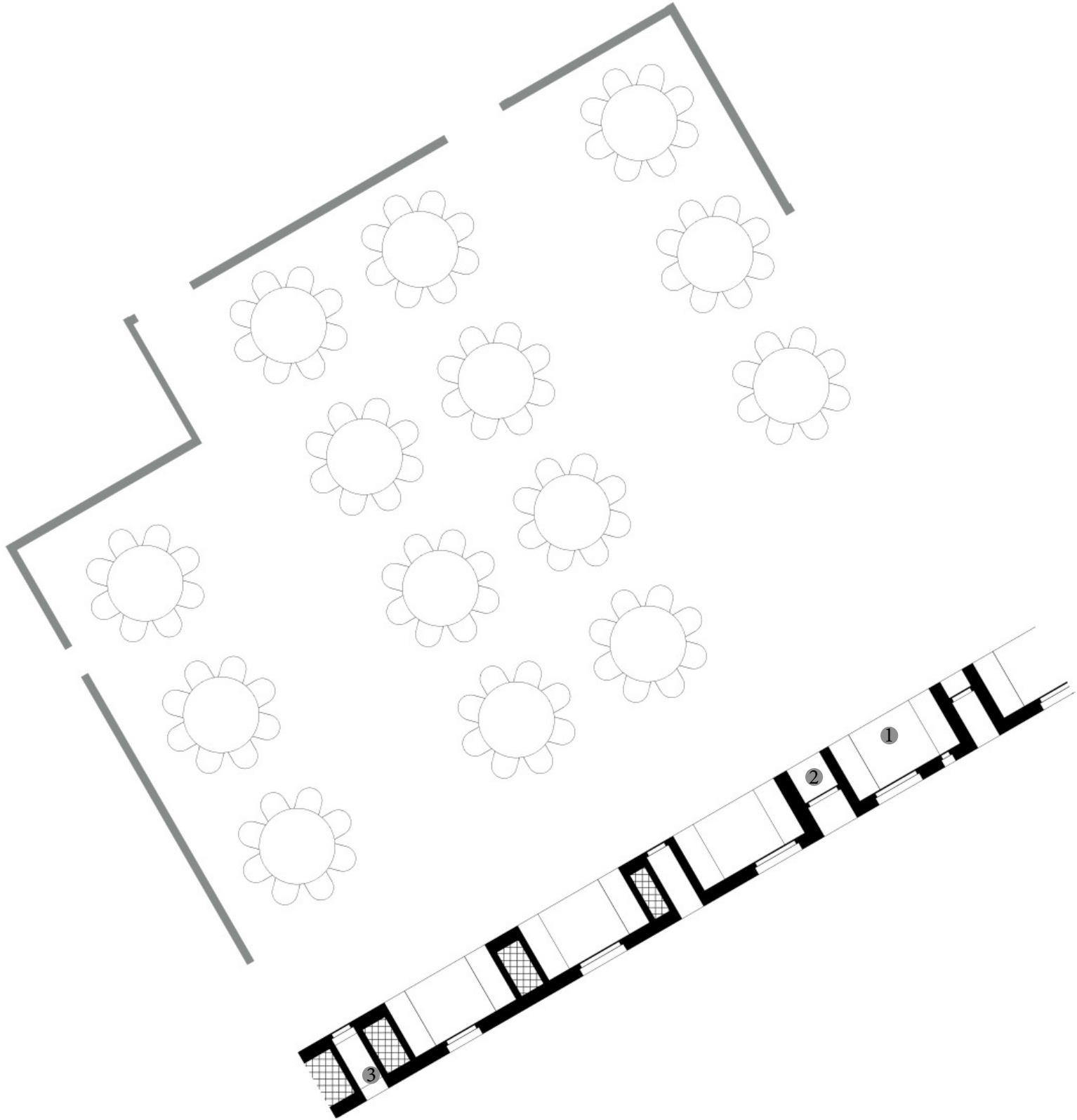
3/32" = 1' - 0"

- ① Bench
- ② Display nook.

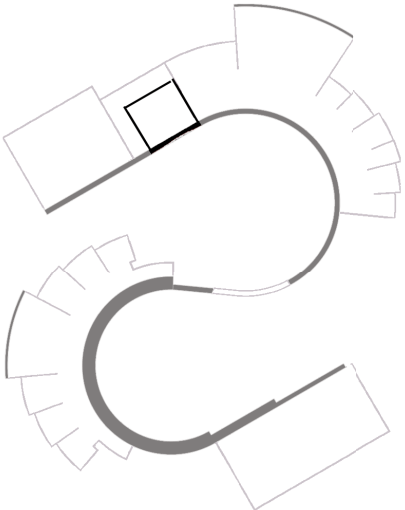


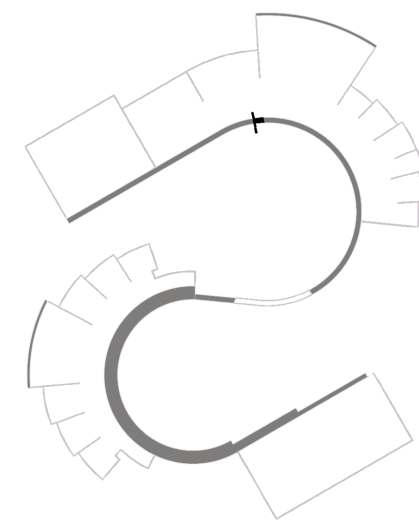
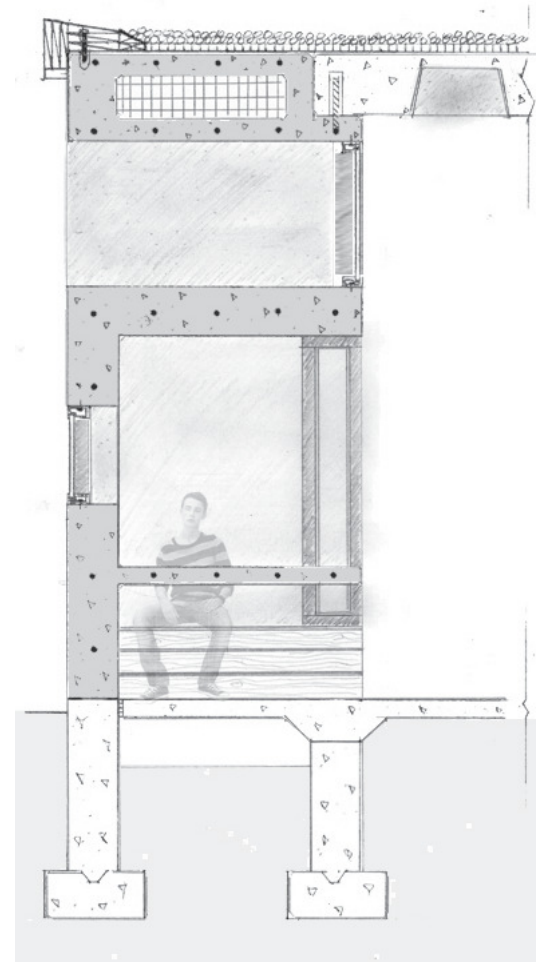
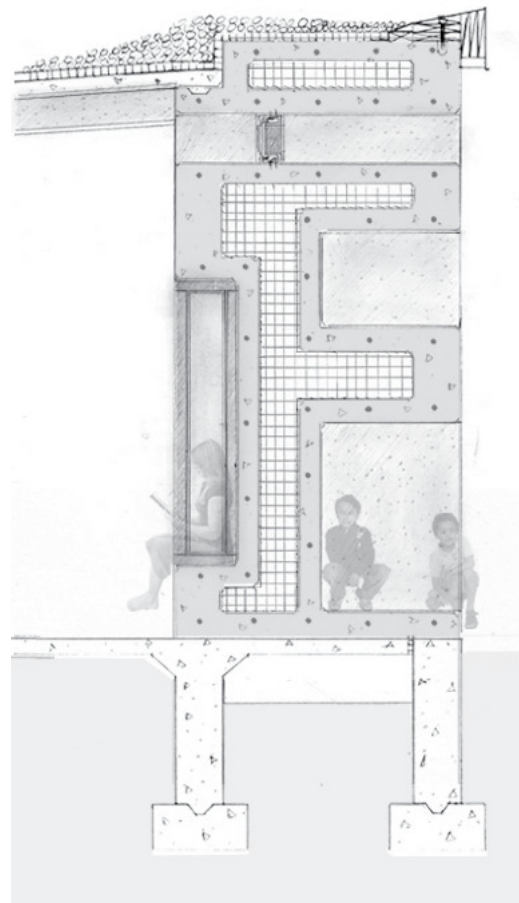
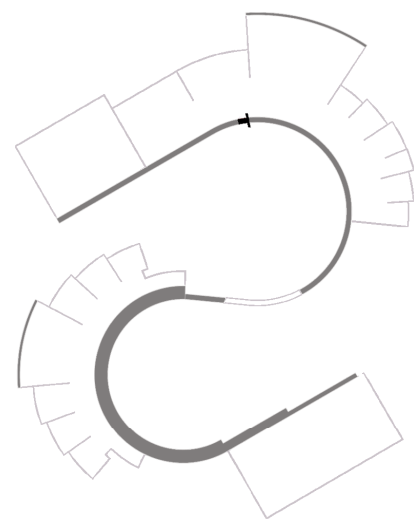
Cafeteria:

3/32" = 1' - 0"

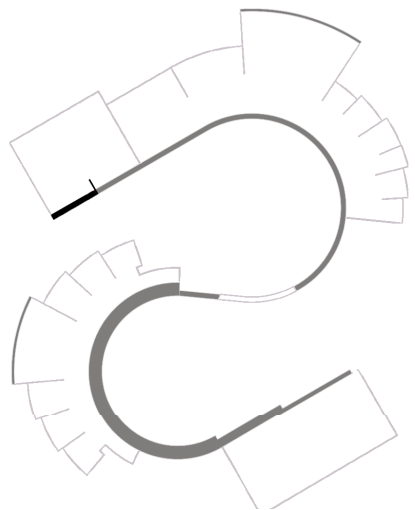
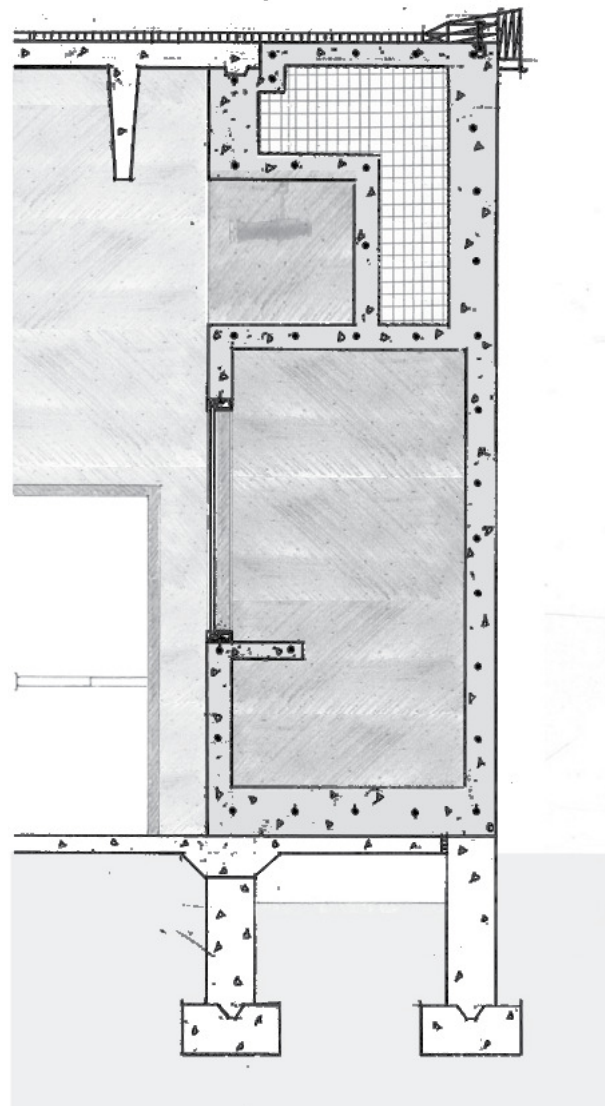


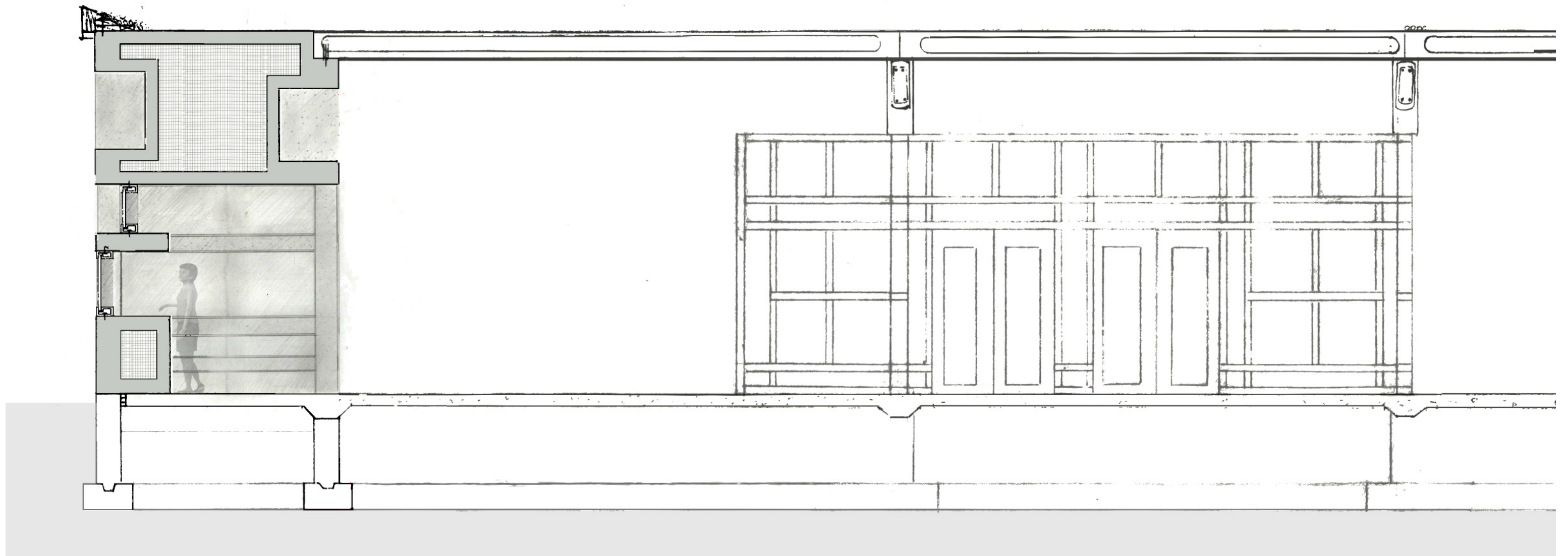
- Incorporated table. ①
- Display nook. ②
- Play space. ③



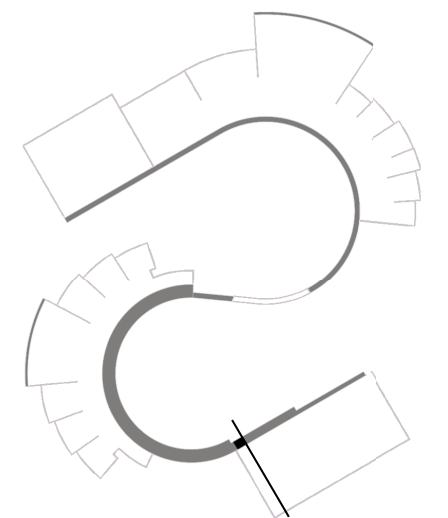
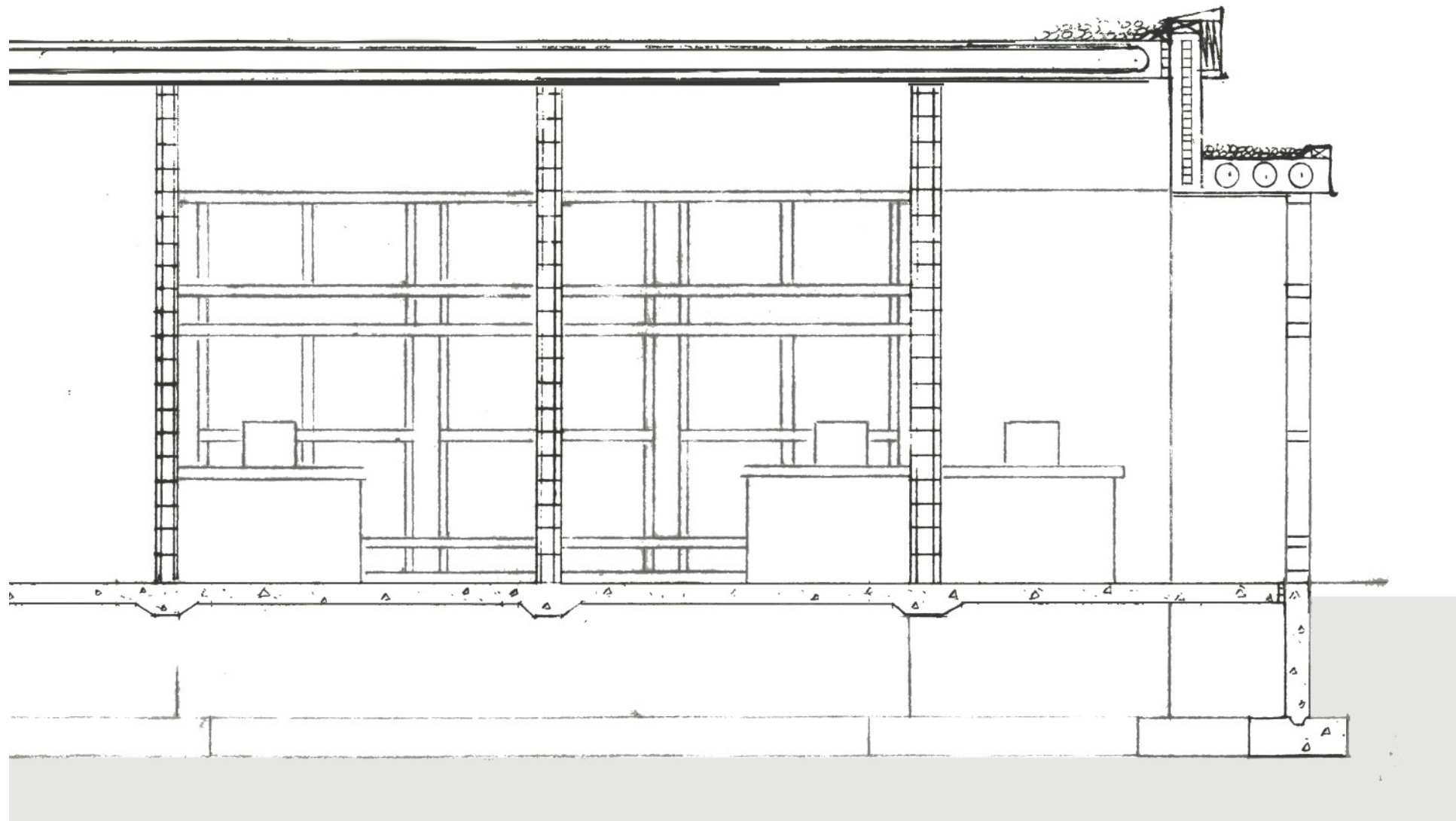


Wall Sections:
Inhabitable Wall
1/4" = 1'-0"





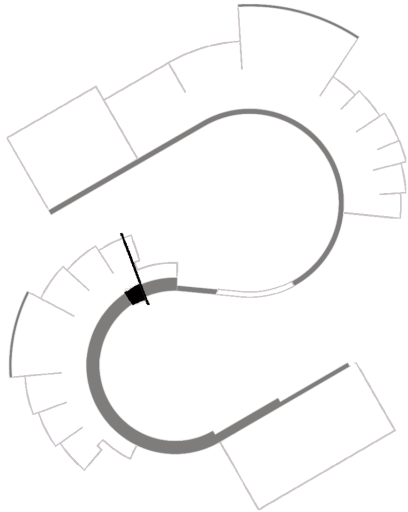
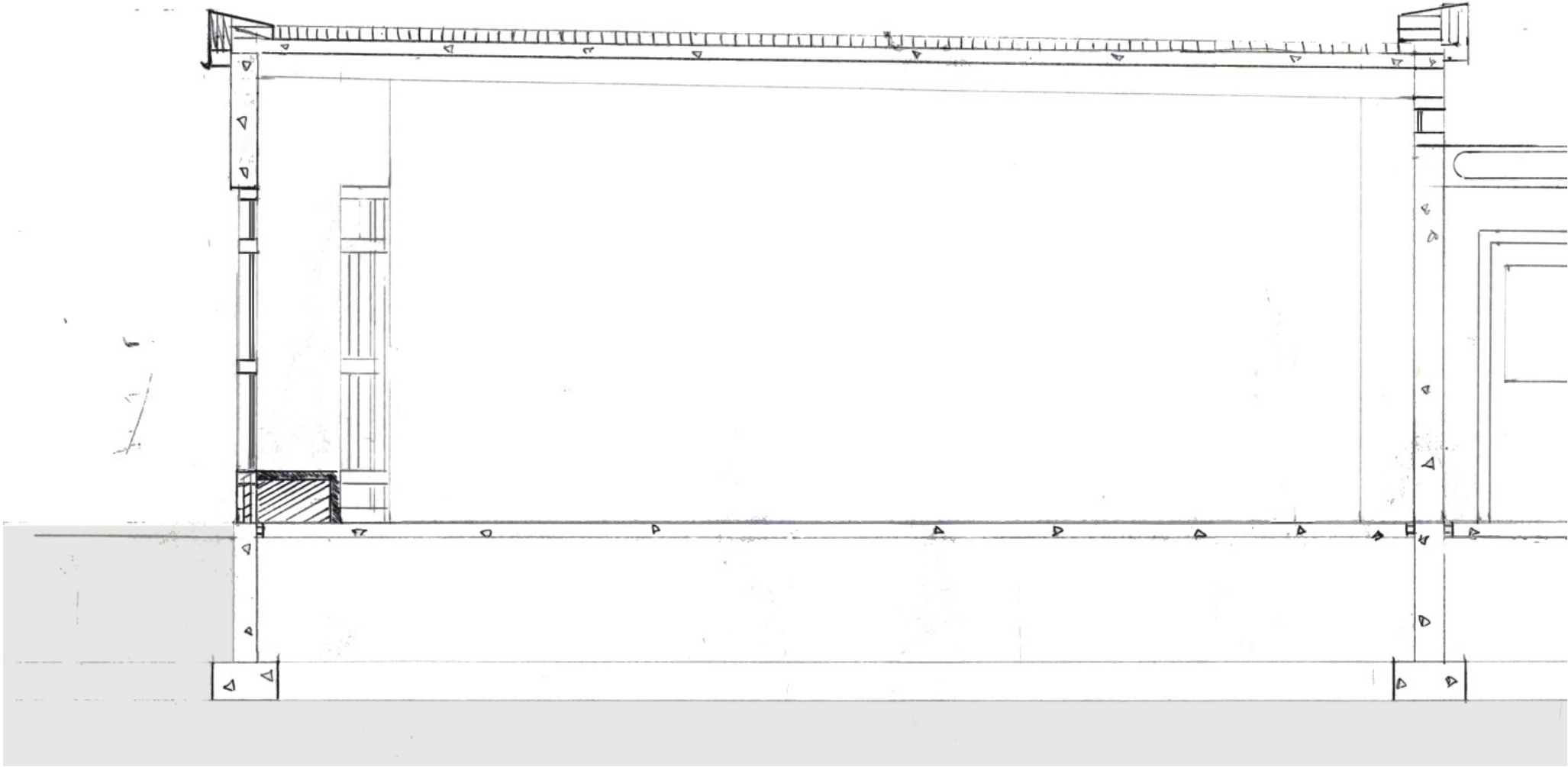
Building Section:
Administration
1/4" = 1' - 0"

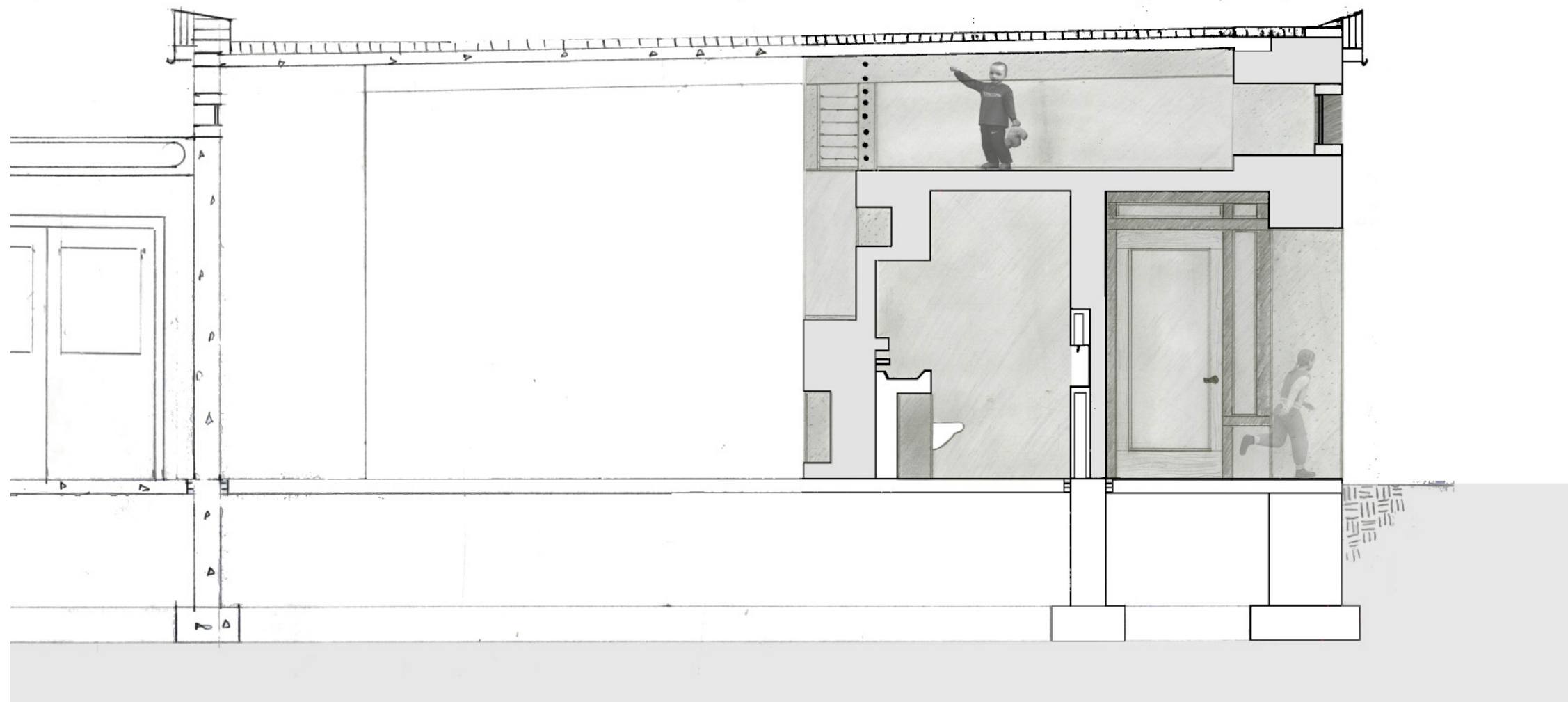


Building Section:

Classroom Entry from Courtyard

1/4" = 1' - 0"

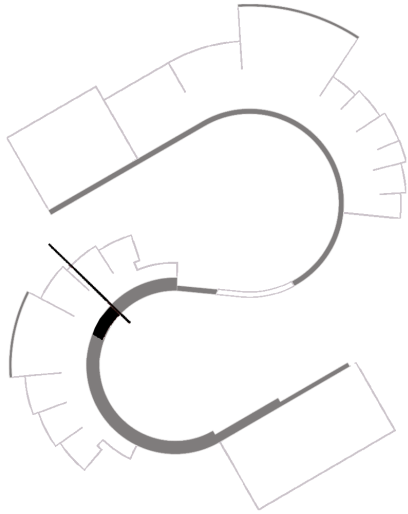
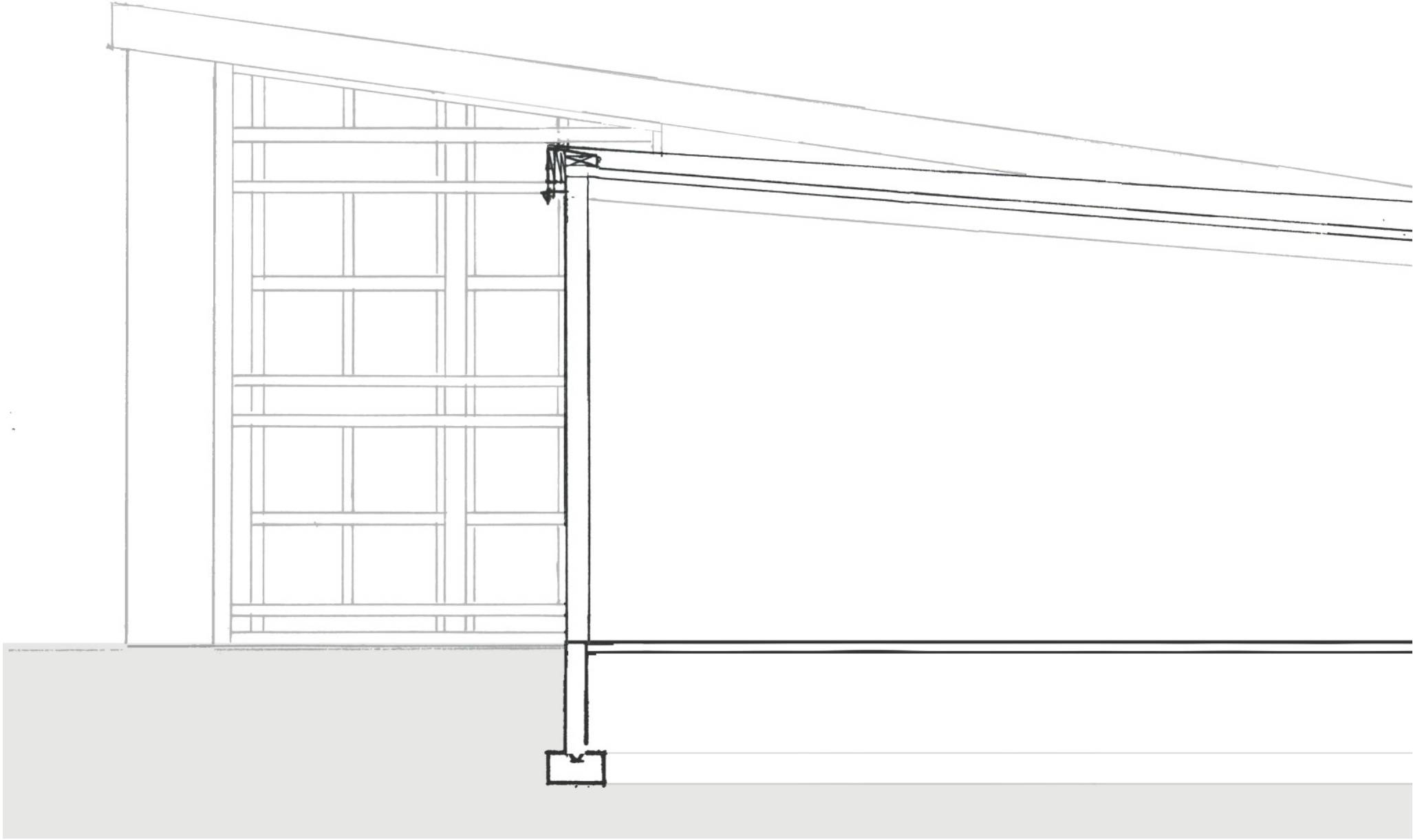


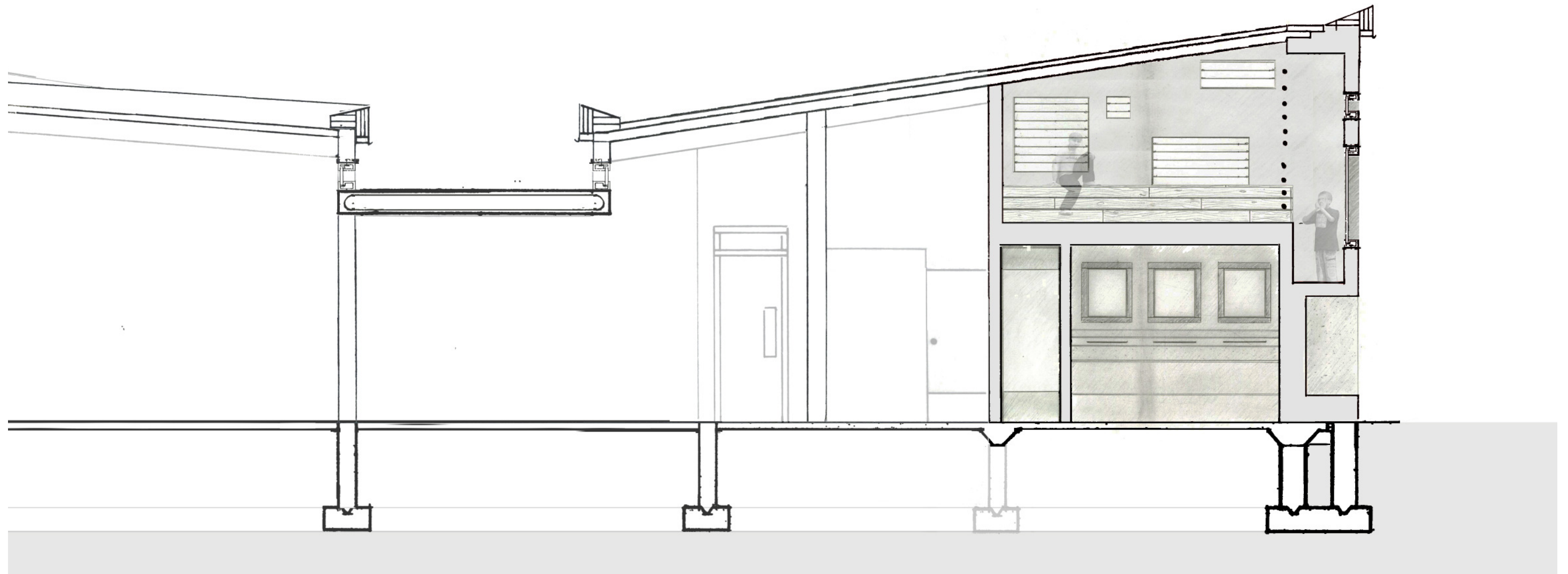


Building Section:

Classroom Play Space

1/4" = 1' - 0"

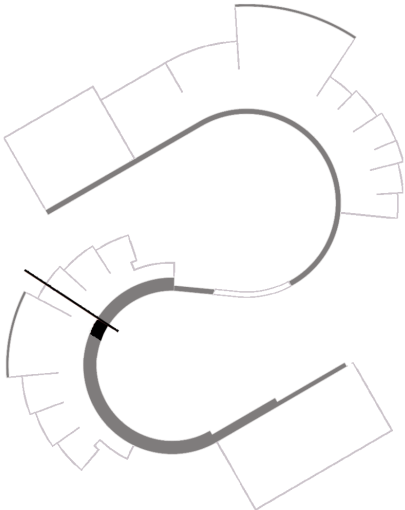
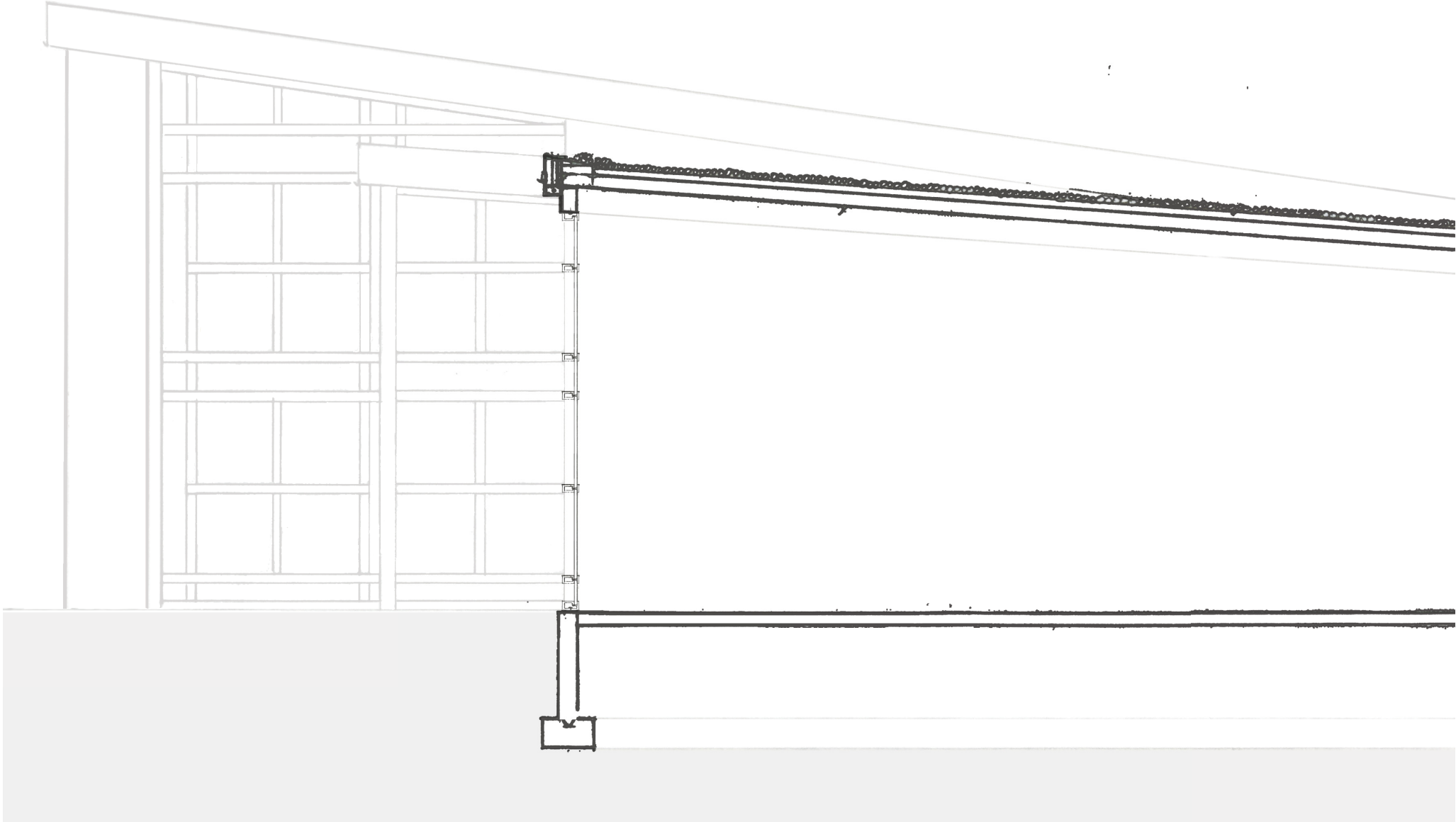


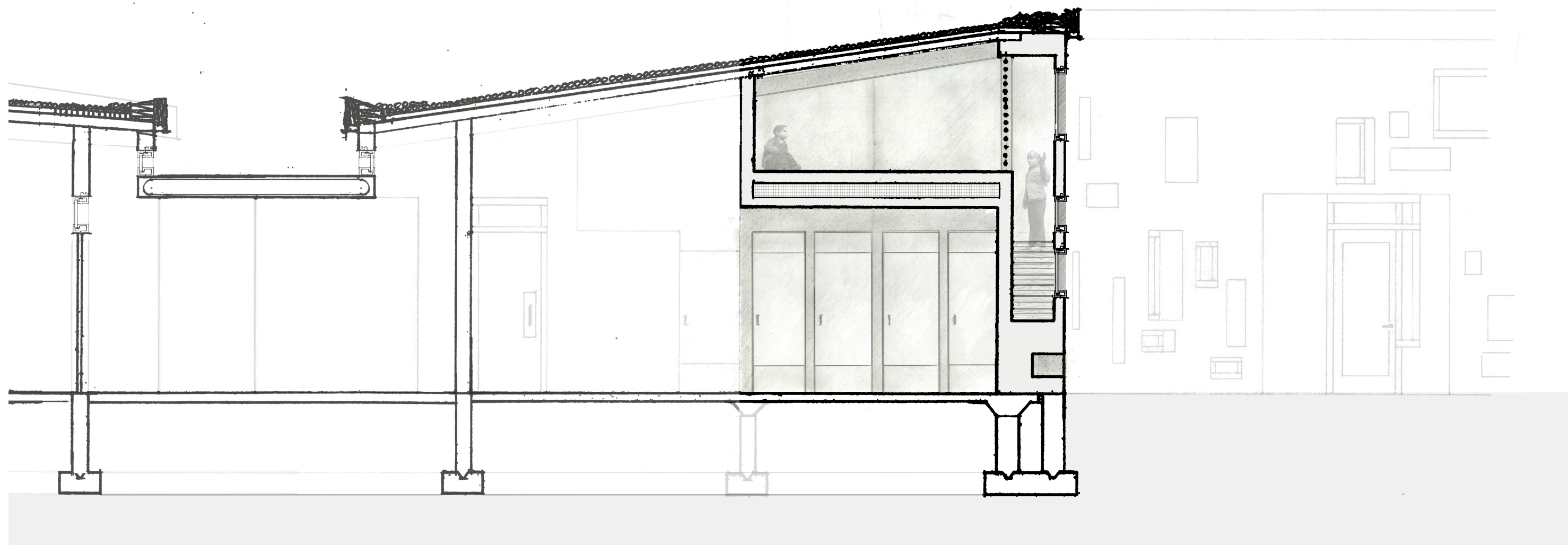


Building Section :

Classroom Play Space

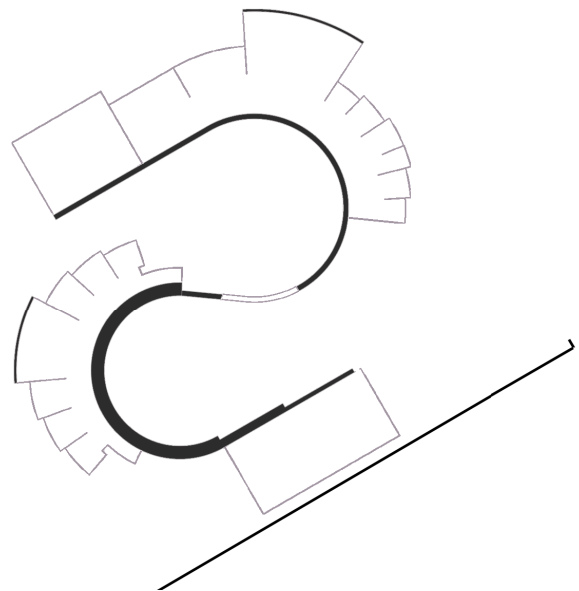
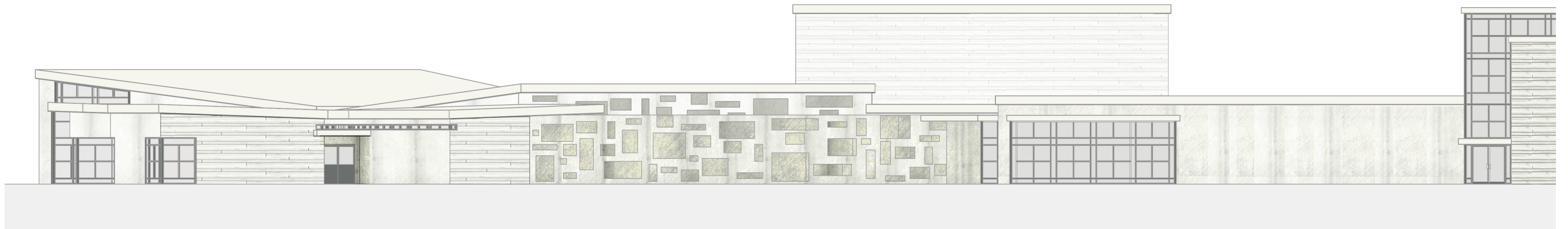
1/4" = 1' - 0"





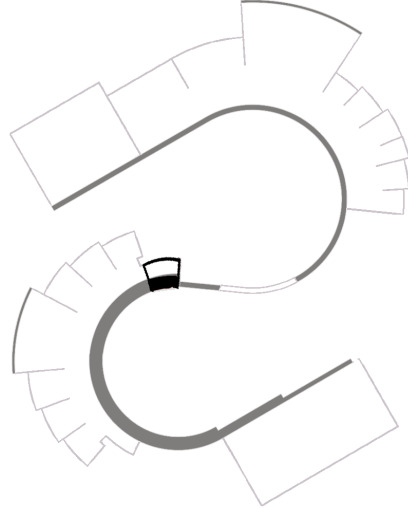
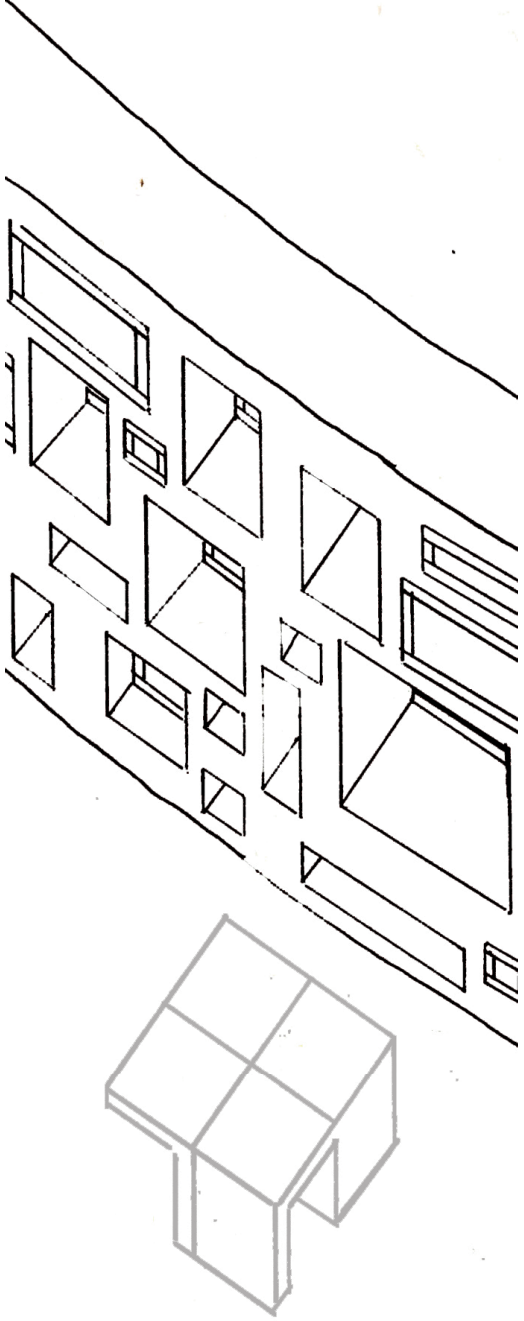
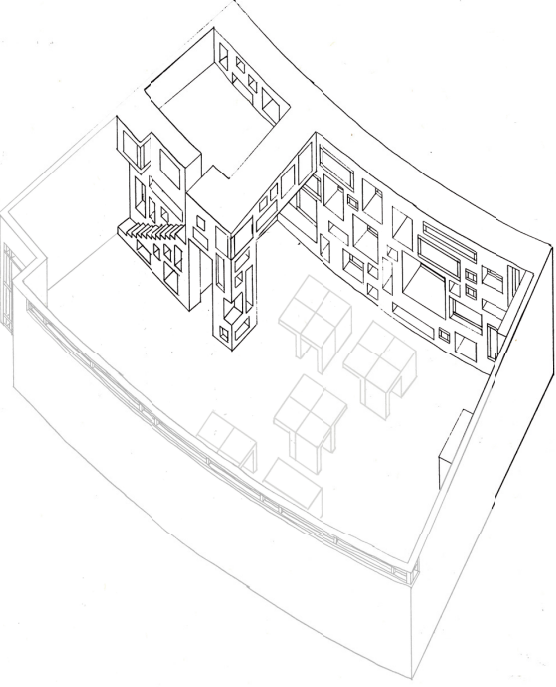
Elevation :

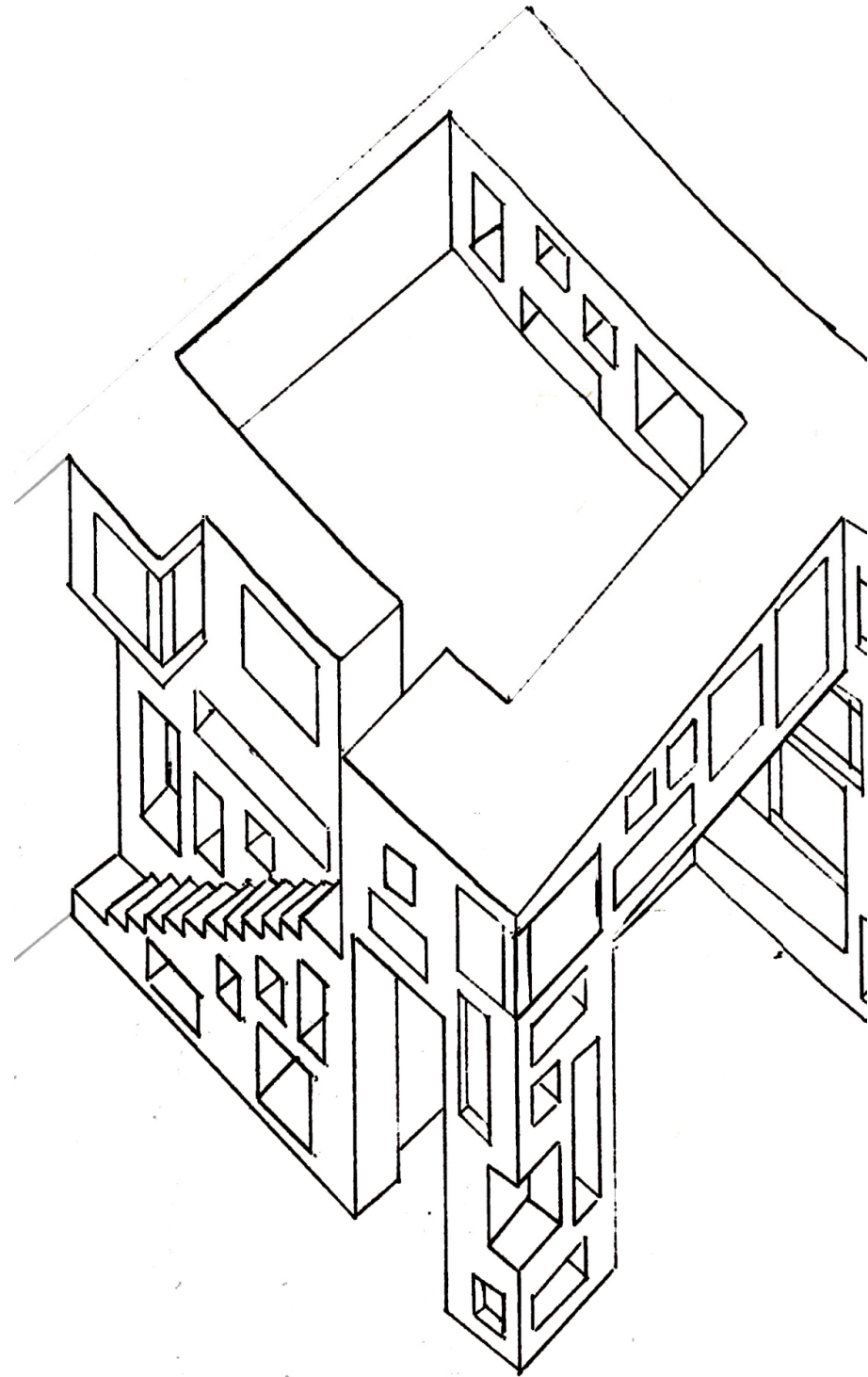
1/15" = 1' - 0"



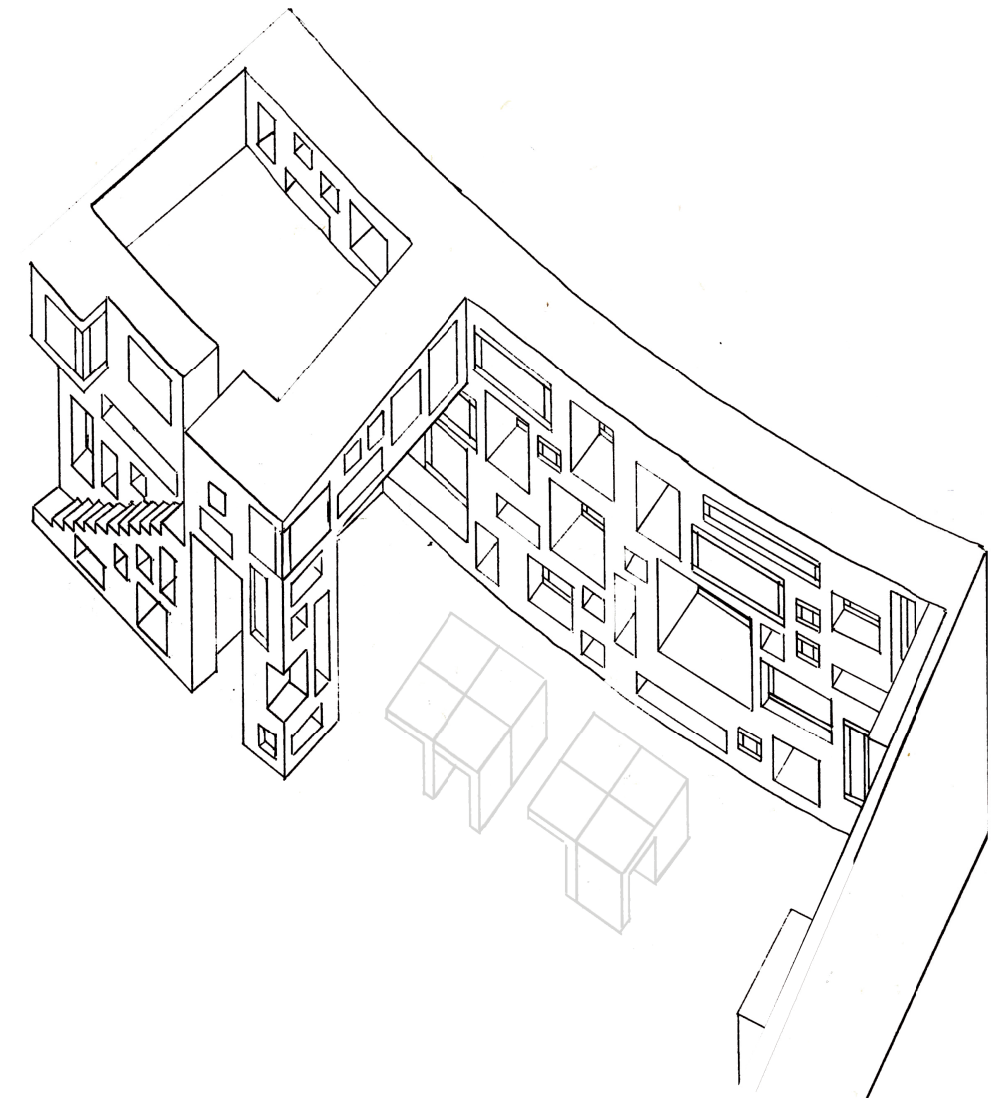


Axonometric Sketches :
Classroom Structure



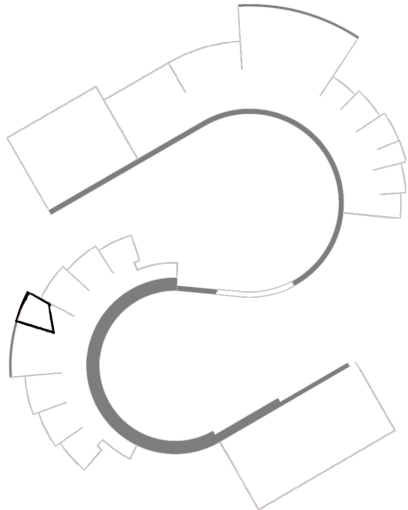


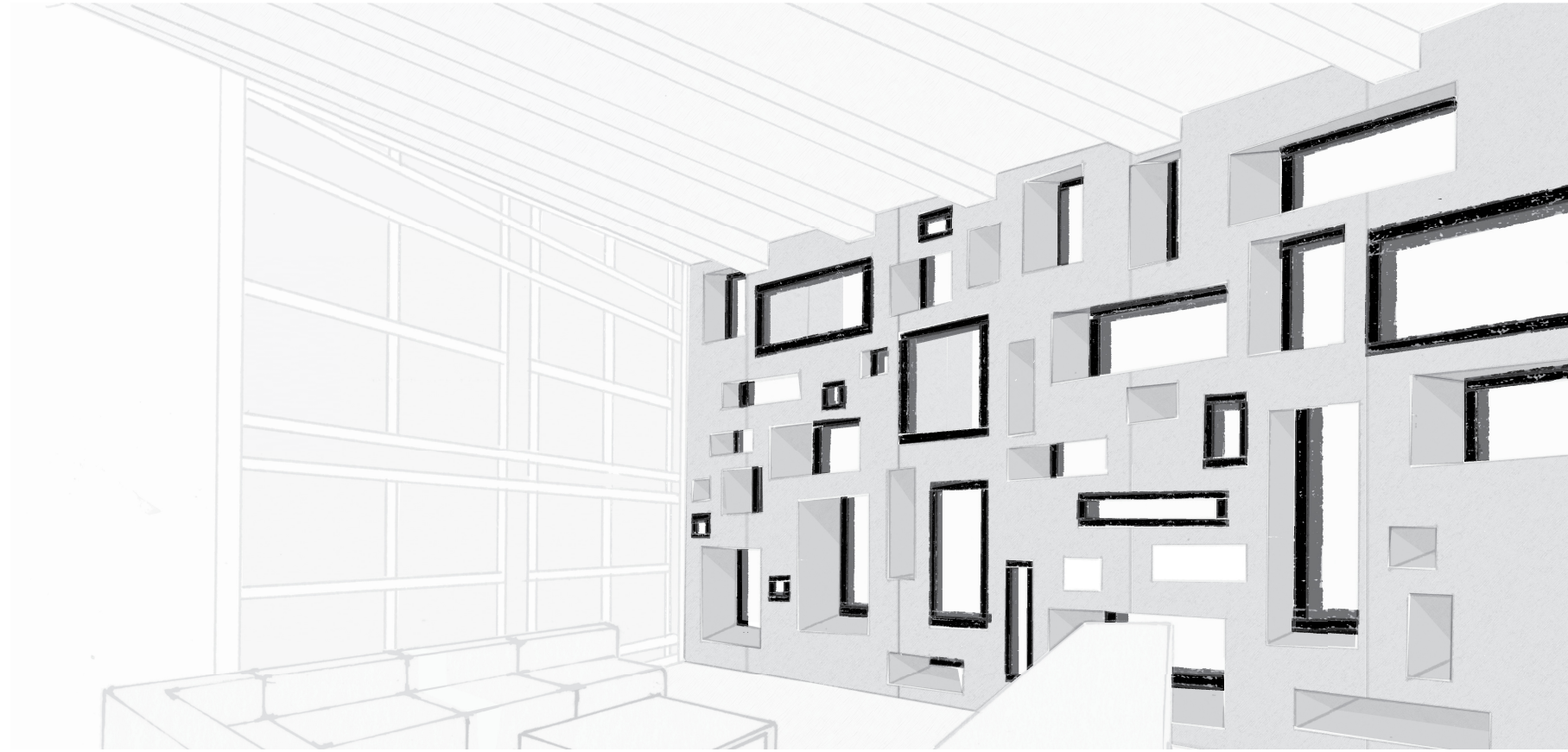
The play space is located above a private entry to the classroom from the courtyard, and service space. To reach the play space the children must climb the stair that has been carved out of the wall.



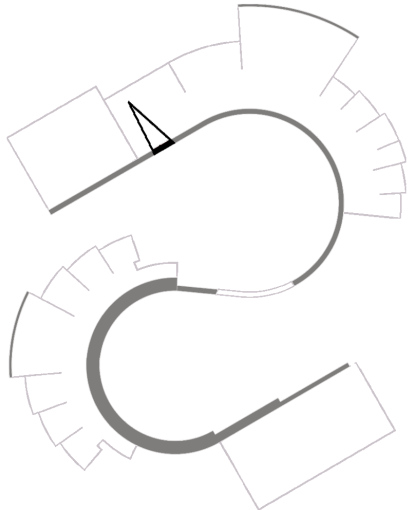
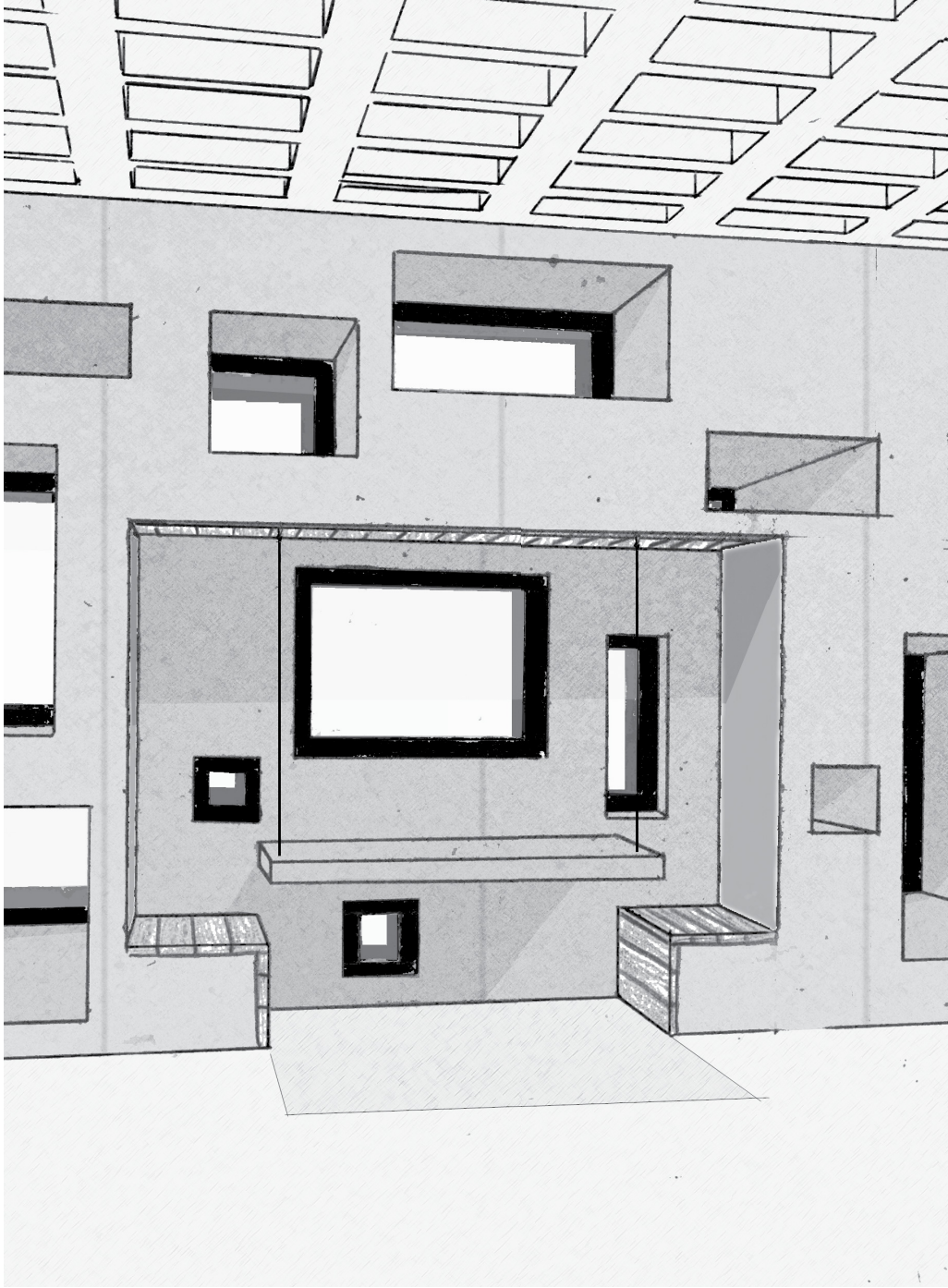
There are larger sections carved out from the wall to allow the desk module, and the incorporated teacher's desk to occupy the wall.

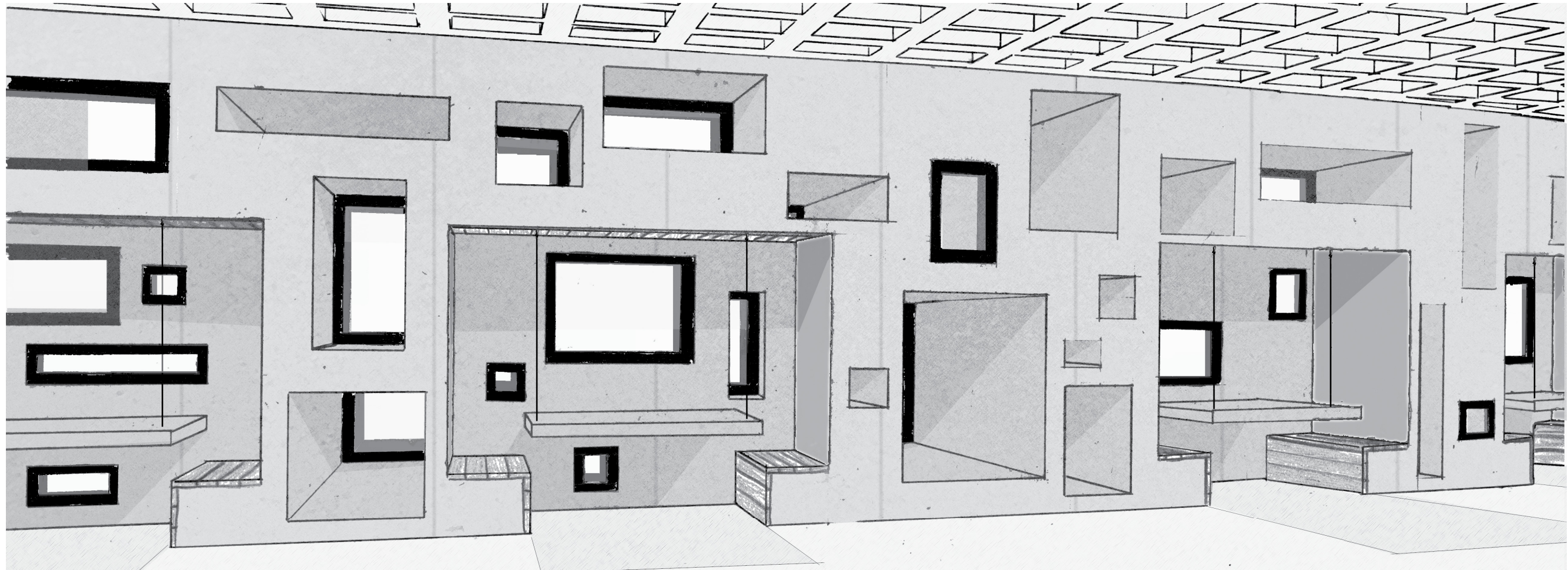
Perspective :
Library





Perspective :
Cafeteria





Perspective :
Classroom

