

Proposal



Model of building in site from the street

Ground Plane

- 1 ——— circulation / mechanical
- 2 ——— sunken play space
- 3 ——— main entry / stair
- 4 ——— drive / drop off

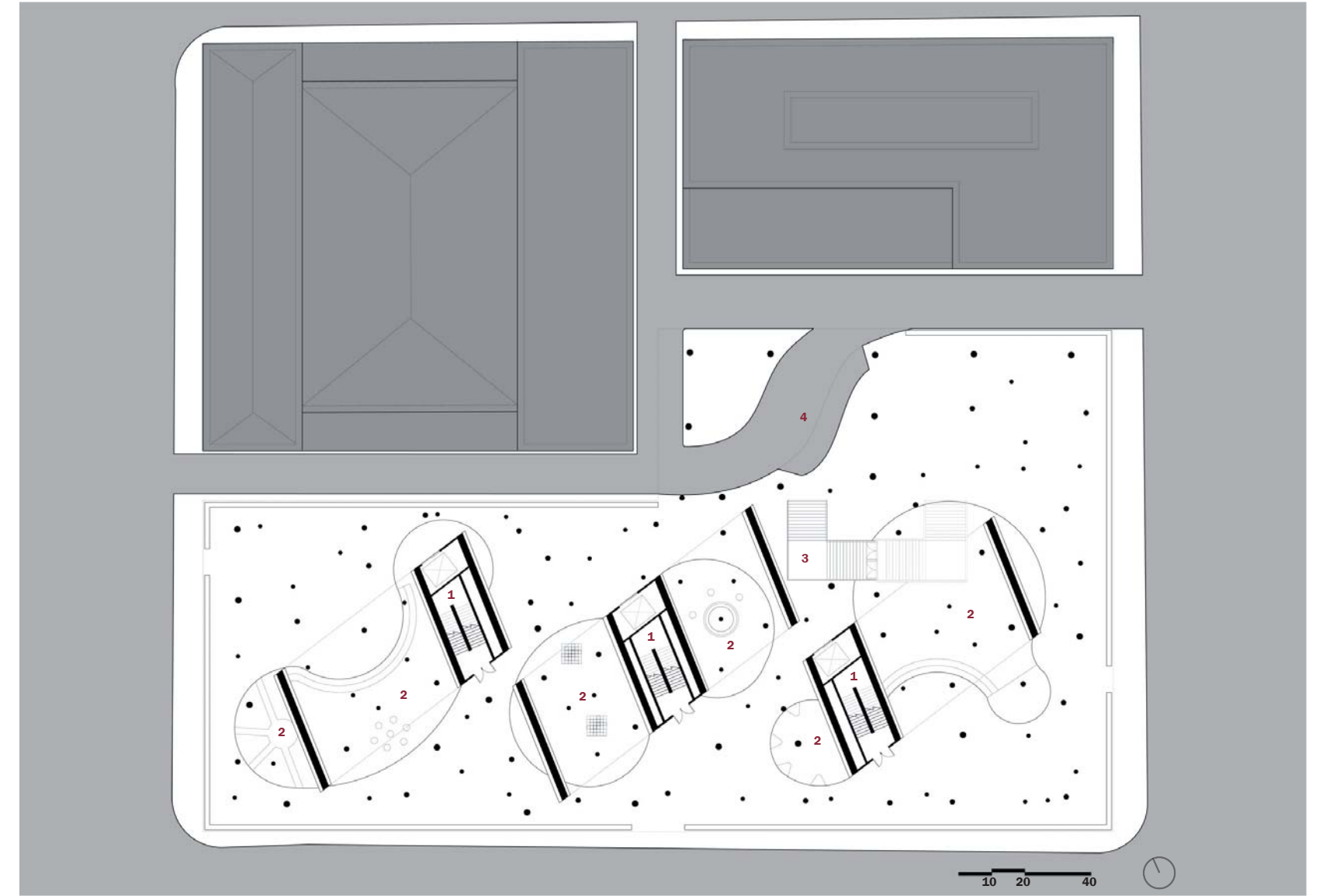


View across plaza toward street



Plaza as seen from along the street

Plaza





Capitals atop the columns light the plaza at night creating dynamic shadows

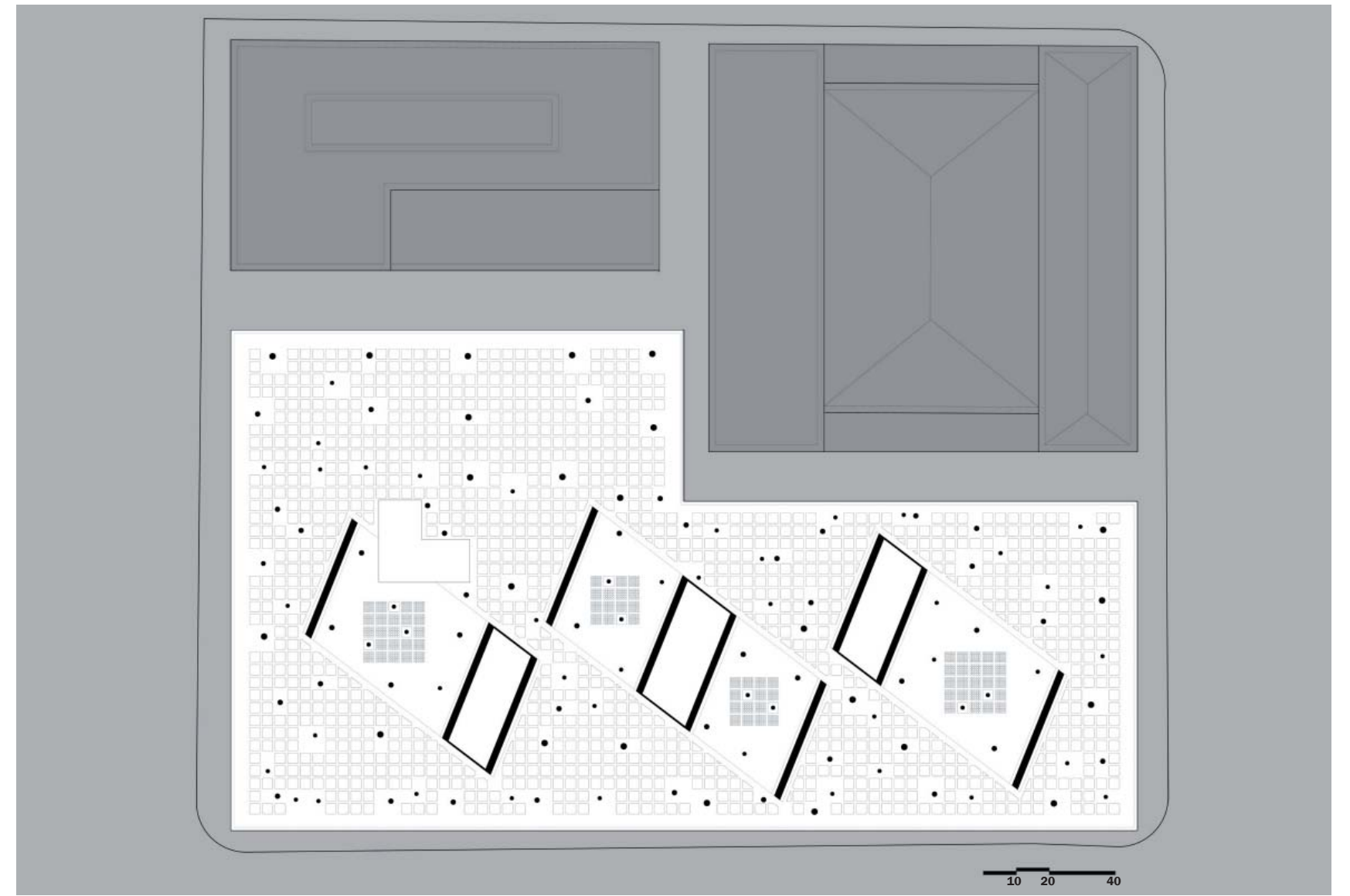


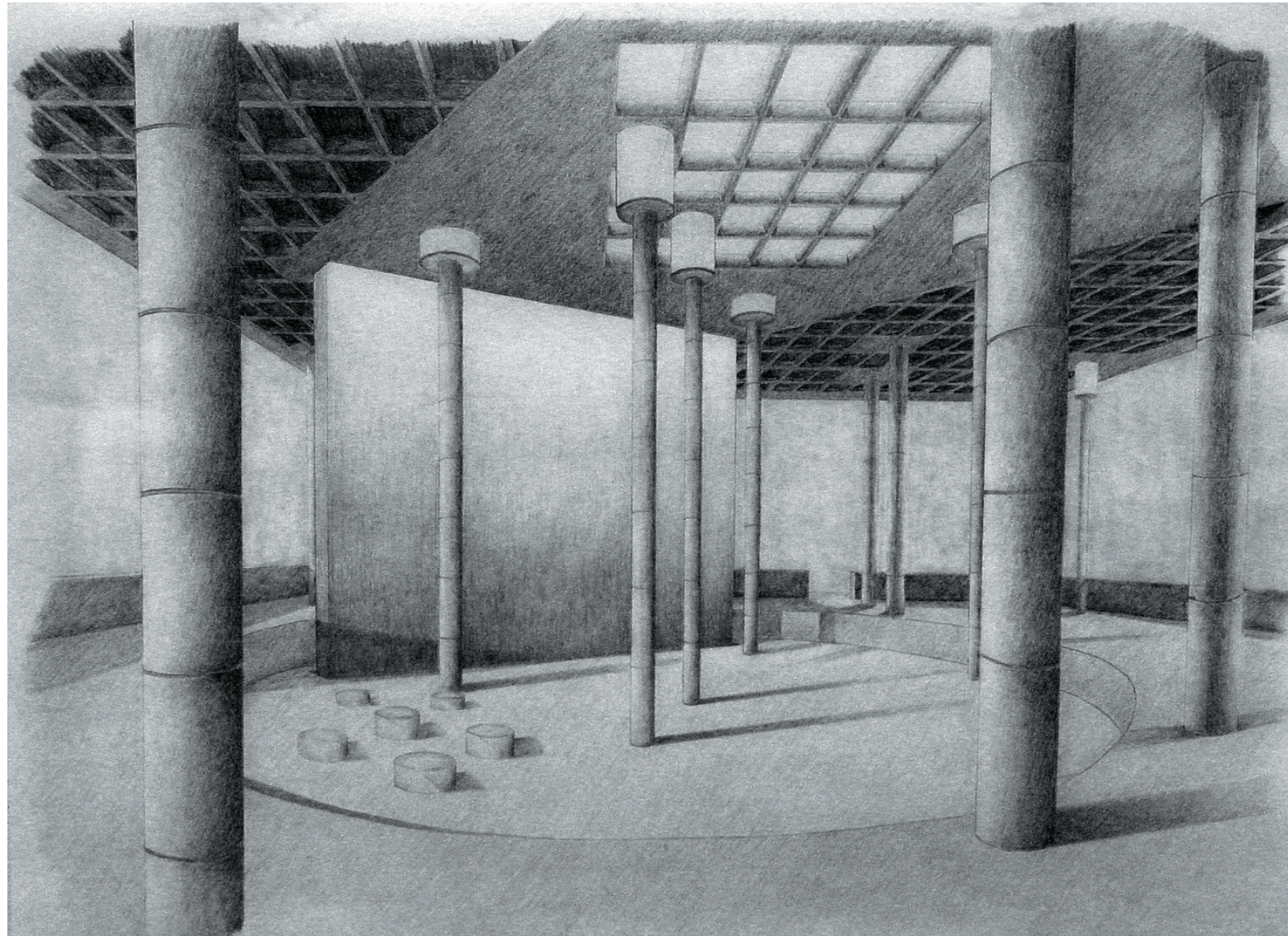
View of plaza from street



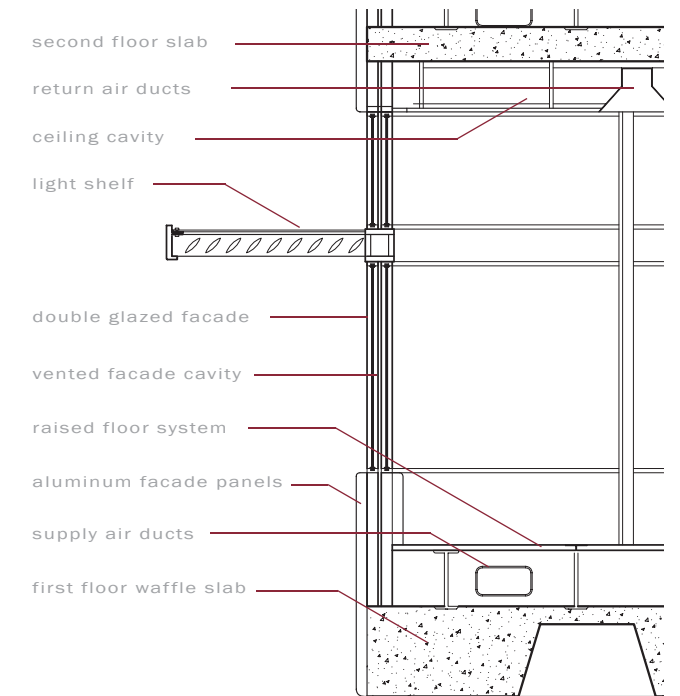
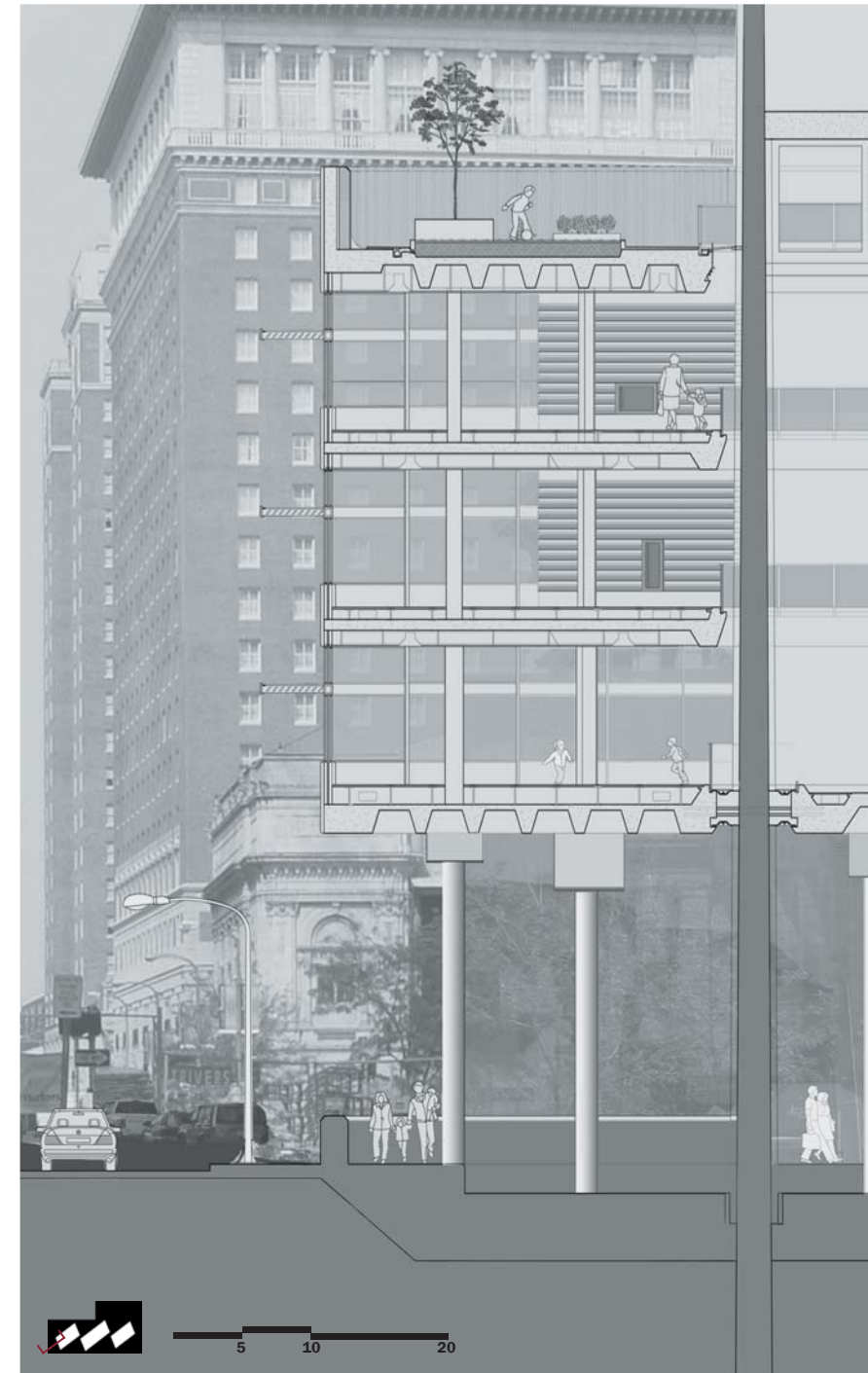
View of plaza ceiling slab and column lights

Plaza





Light washing wall at plaza level



Assembly

First Floor

- 1 ——— circulation / mechanical
- 2 ——— atrium spaces
- 3 ——— main entry / stair
- 4 ——— cafeteria
- 5 ——— administrative offices
- 6 ——— kitchen
- 7 ——— janitor / utility closet
- 8 ——— library / circulation desk
- 9 ——— reading room
- 10 ——— kindergarten classrooms
- 11 ——— first grade classrooms
- 12 ——— nursery school

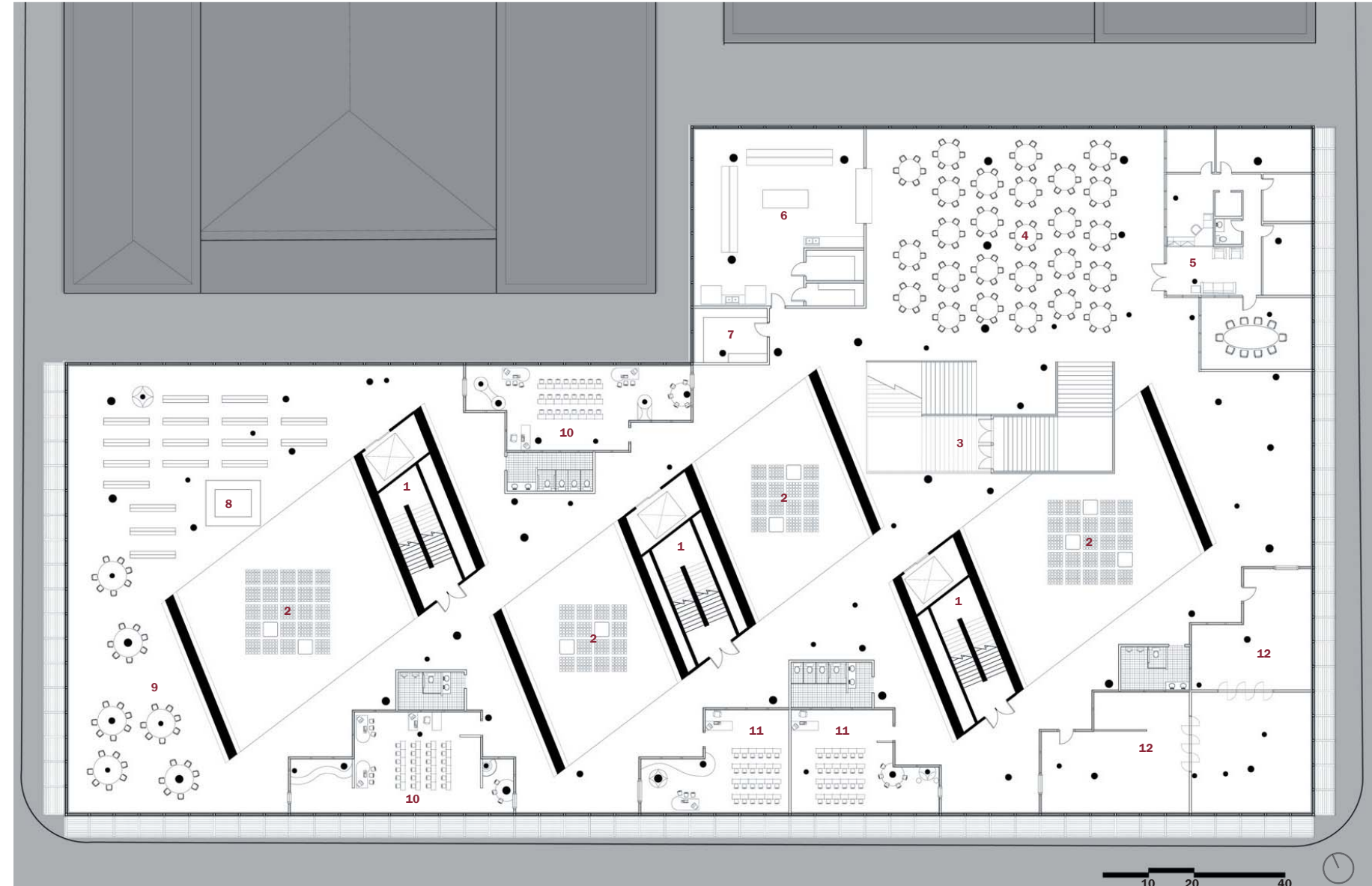


Looking down school hall toward colored window of classroom



View through atrium toward classroom

School Plans



Classrooms

- 1 ——— circulation / mechanical
- 2 ——— atrium spaces
- 3 ——— glass block in floor
- 4 ——— hallway
- 5 ——— restroom
- 6 ——— classroom entry
- 7 ——— teacher's desk
- 8 ——— main teaching surface
- 9 ——— individual learning spaces

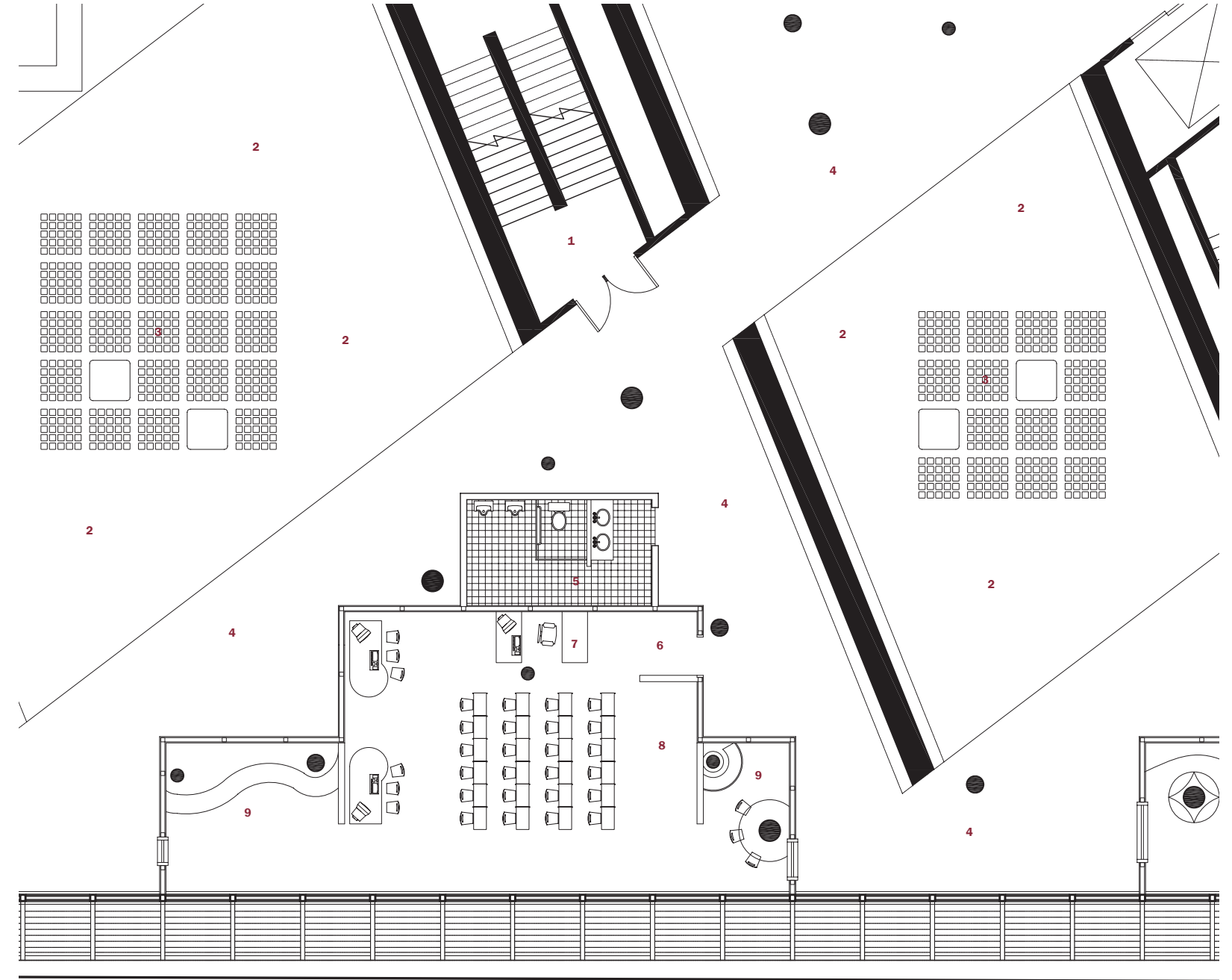


Looking toward main teaching surface in a classroom



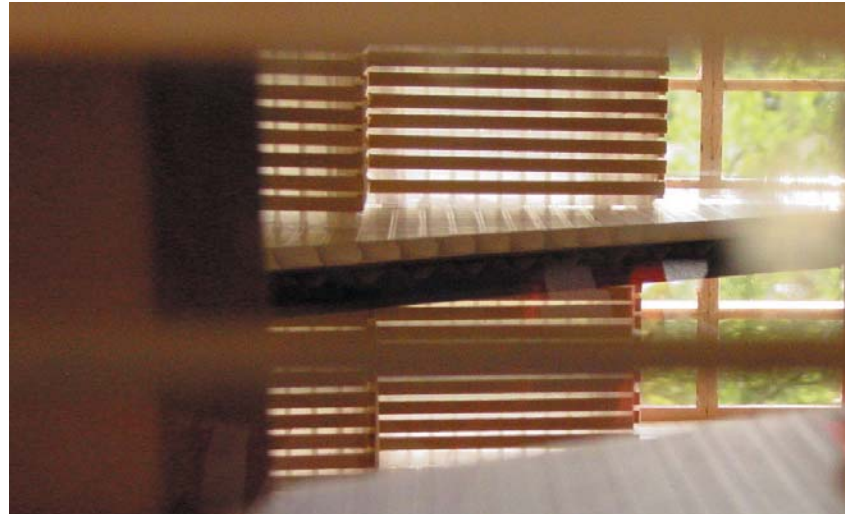
Individual learning spaces around columns in classroom

School Plans

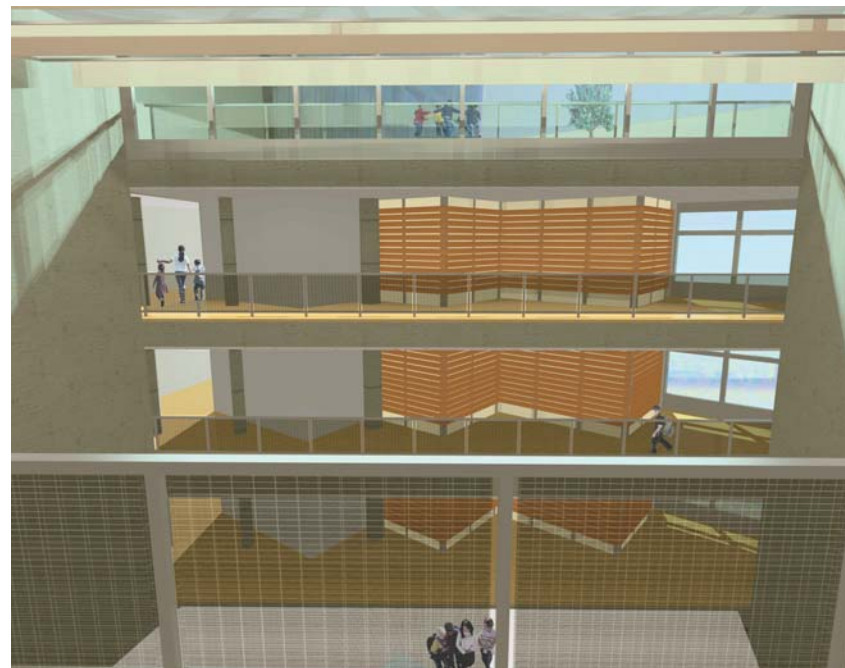


Second Floor

- 1 ——— circulation / mechanical
- 2 ——— atrium spaces
- 3 ——— gymnasium
- 4 ——— office
- 5 ——— shower rooms
- 6 ——— music room
- 7 ——— practice rooms
- 8 ——— office
- 9 ——— second grade classrooms
- 10 ——— teachers' lounge
- 11 ——— third grade classrooms
- 12 ——— art rooms

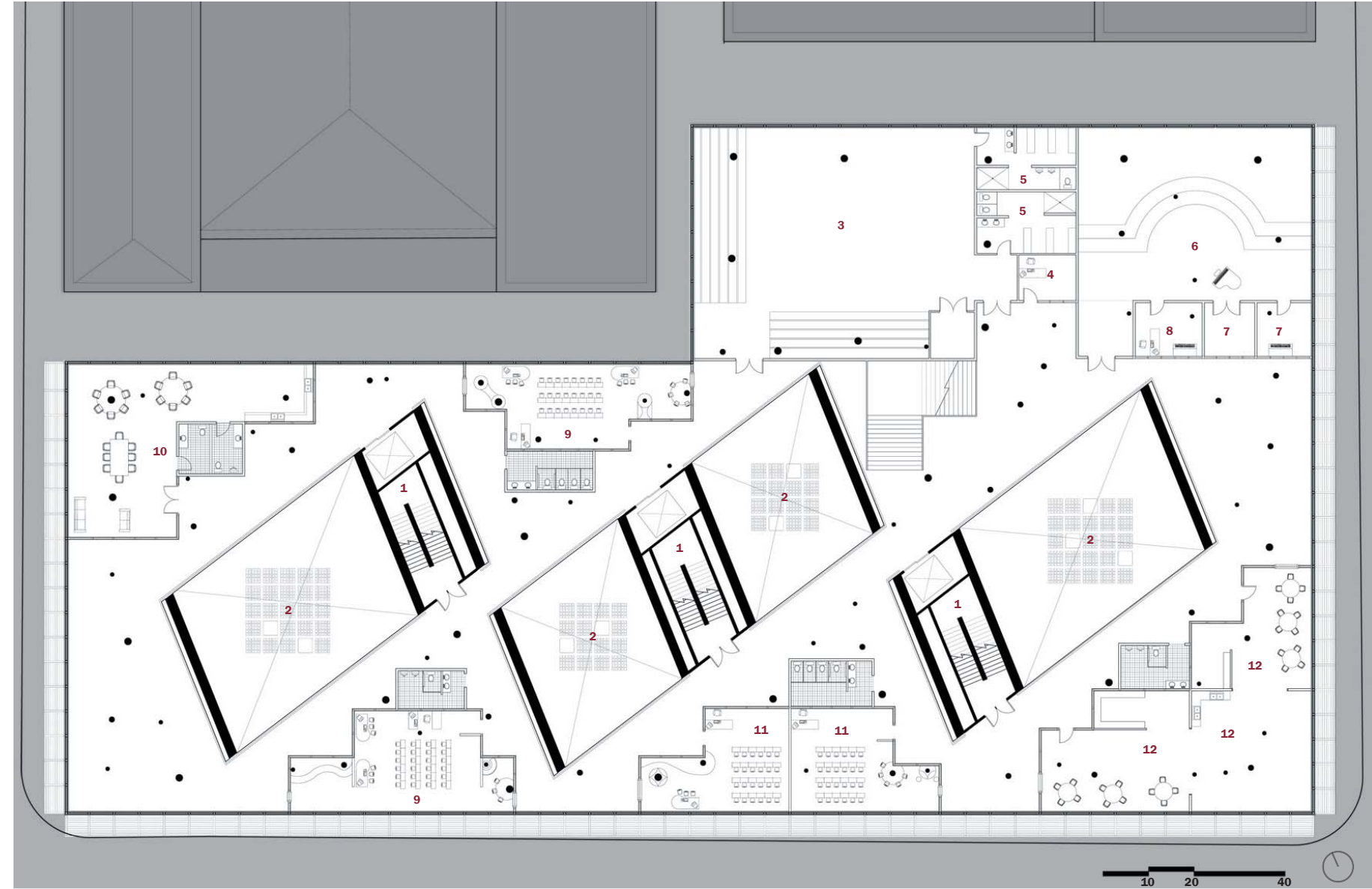


Looking across atrium to classrooms in section model



View looking down into an atrium

School Plans





Light in atrium space in section model



View across atrium to other classrooms

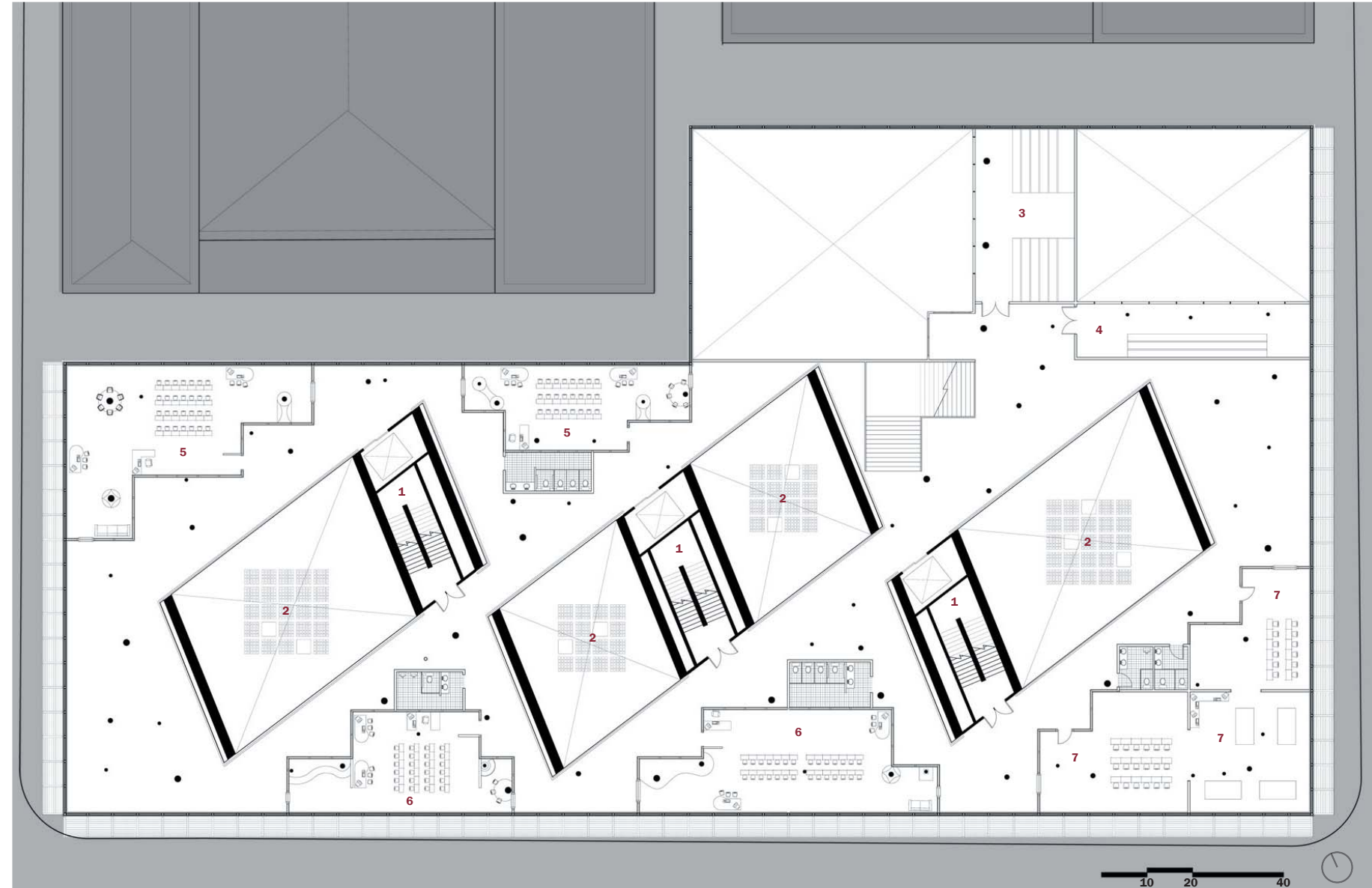
Third Floor

- 1 ——— circulation / mechanical
- 2 ——— atrium spaces
- 3 ——— gymnasium viewing deck
- 4 ——— music room balcony
- 5 ——— fourth grade classrooms
- 6 ——— fifth grade classrooms
- 7 ——— adult learning center

School Plans



Atrium at first floor of school



Roof Garden

- 1 ——— circulation / mechanical
- 2 ——— atrium spaces
- 3 ——— stair vestibule to roof
- 4 ——— boardwalk



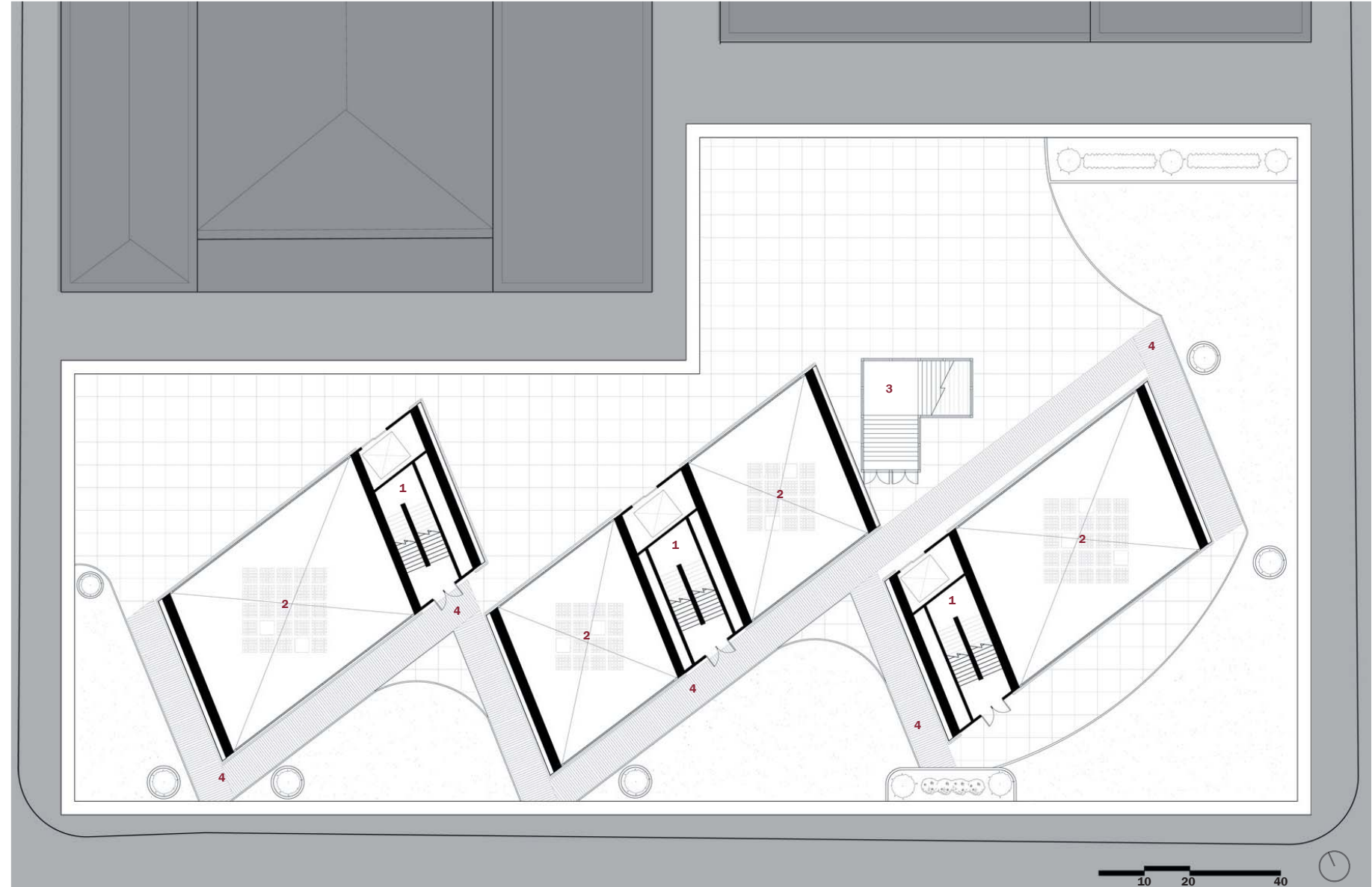
Light on playground from behind towers



Light shelf and roof garden



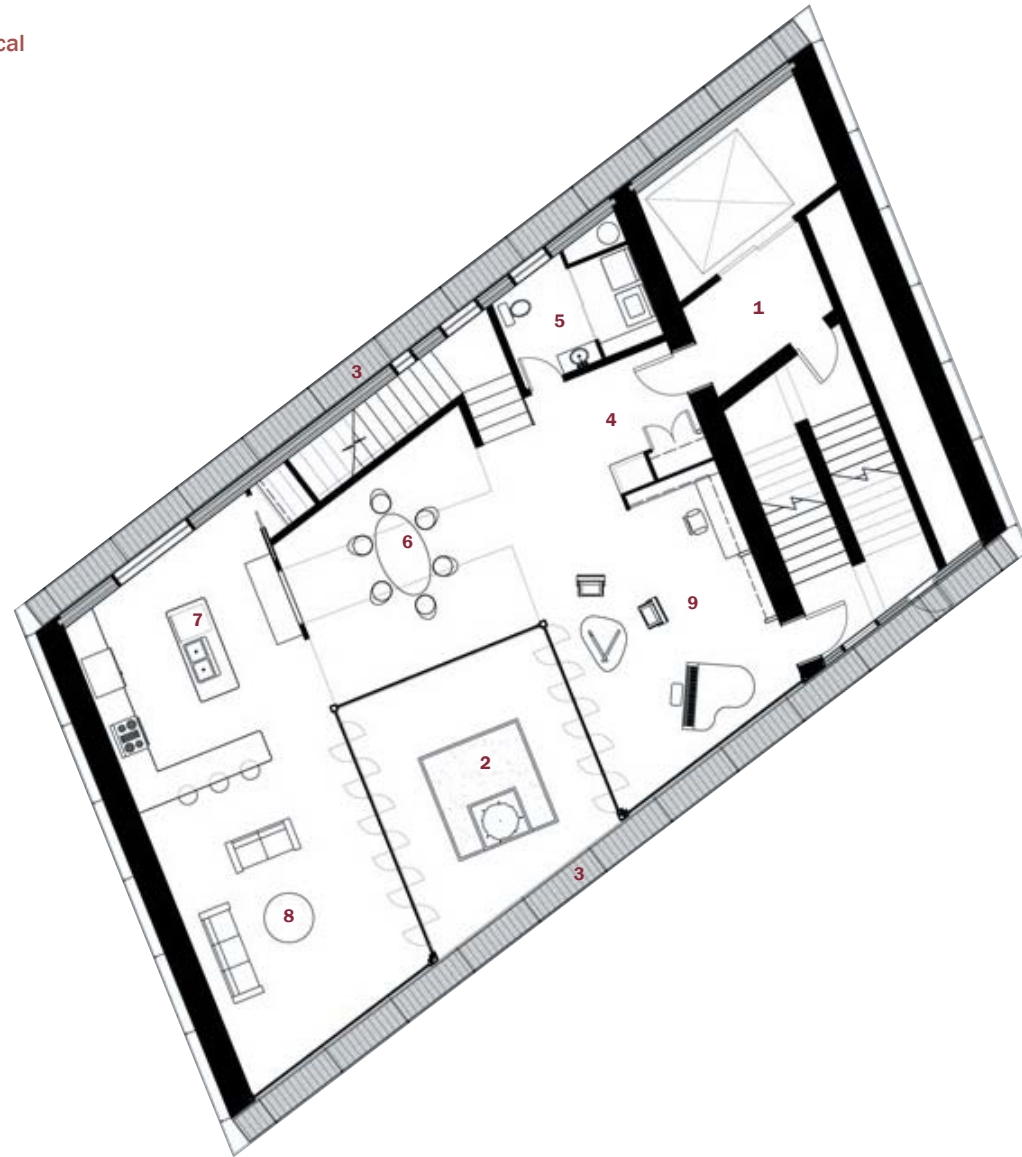
View of boardwalk next to atrium on roof garden



School Plans

1st Floors

- 1 ——— circulation / mechanical
- 2 ——— private garden
- 3 ——— maintenance deck
- 4 ——— entry
- 5 ——— bathroom / laundry
- 6 ——— dining room
- 7 ——— kitchen
- 8 ——— living room
- 9 ——— study



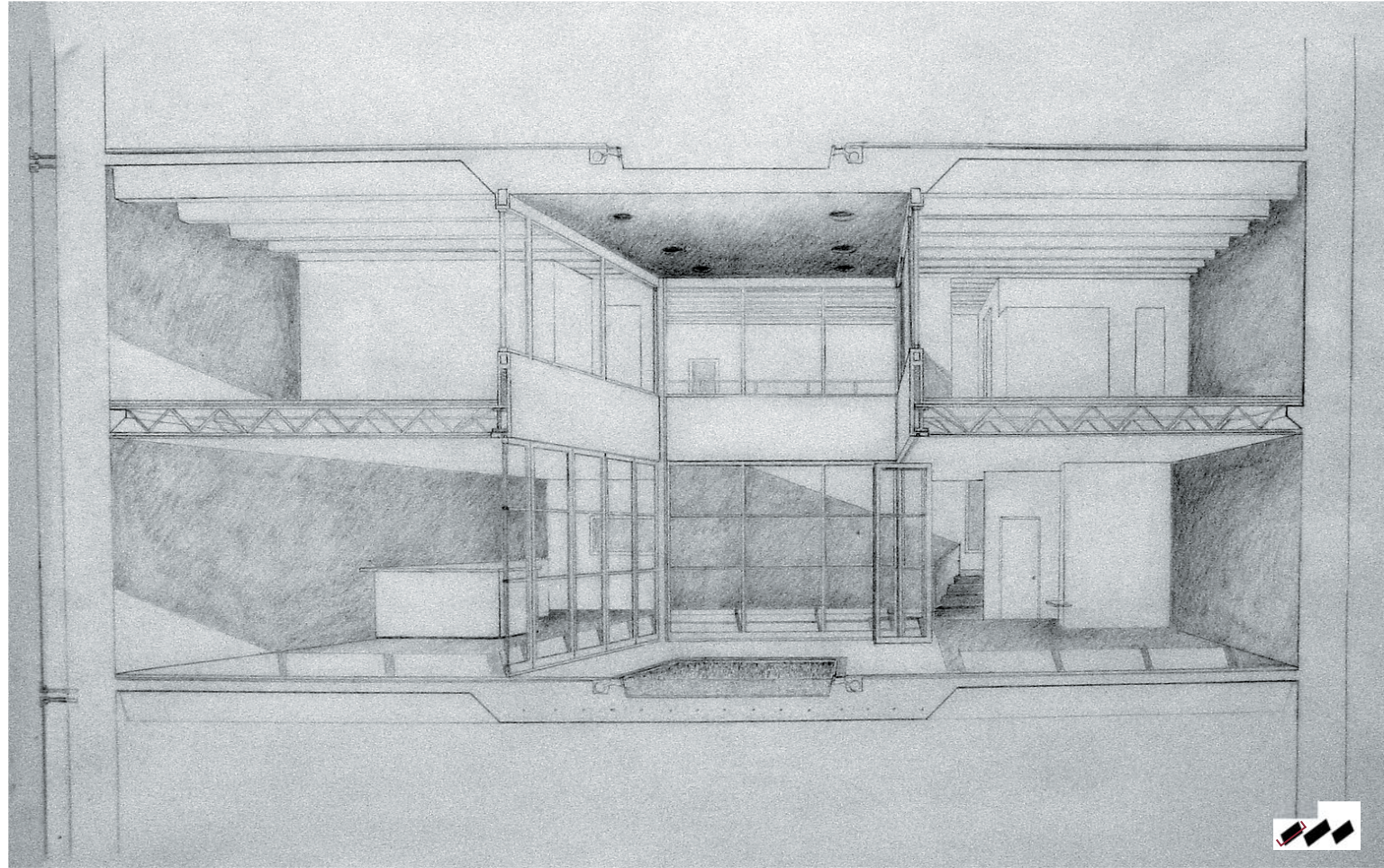
Residence Plans

2nd Floors

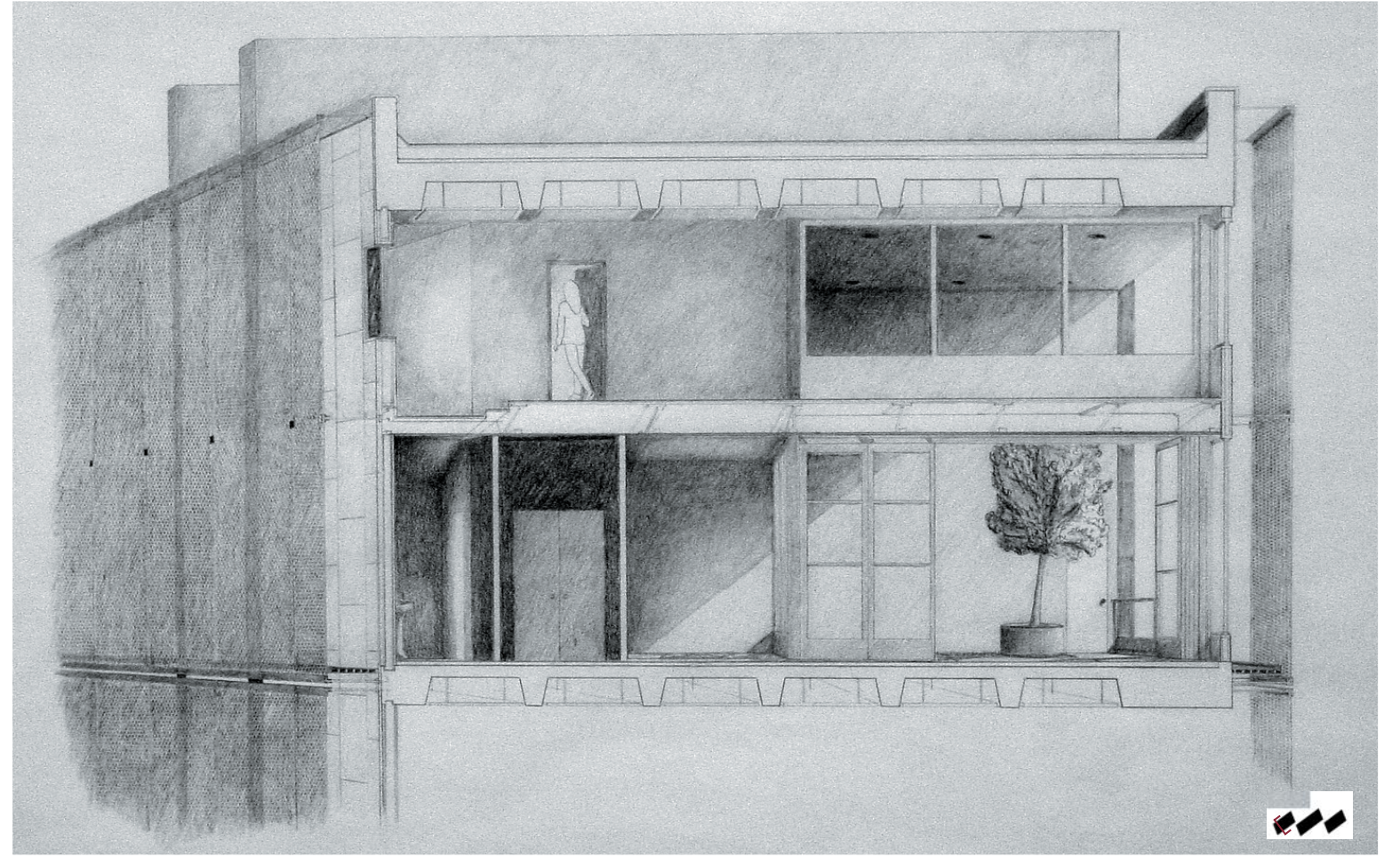
- 1 ——— circulation / mechanical
- 2 ——— private garden below
- 3 ——— maintenance deck
- 4 ——— playroom
- 5 ——— bedroom
- 6 ——— closet
- 7 ——— bathroom



Residence Plans



Section Perspectives



Choosing the appropriate metal fabric for the screen was difficult. Three screen types were selected and then tested on the section model to determine which fulfilled all the desired functions. It was important that the screen not be distracting as horizontal and vertical bars over the window, which would result in a feeling of incarceration for the residents. Also a key consideration was that the percentage of open space allow for enough light into the residences for them to be comfortably day lit.

Lastly, it was important for the screen appear opaque from a distance giving the towers a more solid look, while still being transparent enough up close that the bearing walls still clearly read as different from the rest of the towers. To help further emphasize the strong structural walls, at the top the metal fabric ends and the walls protrude above the screen announcing their presence.

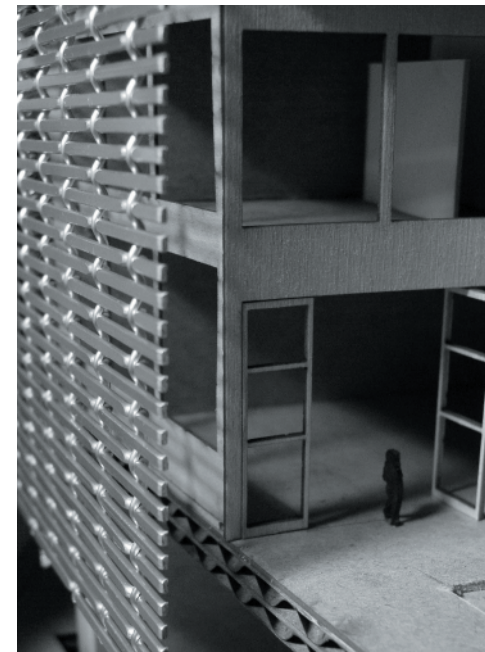
Screen Studies



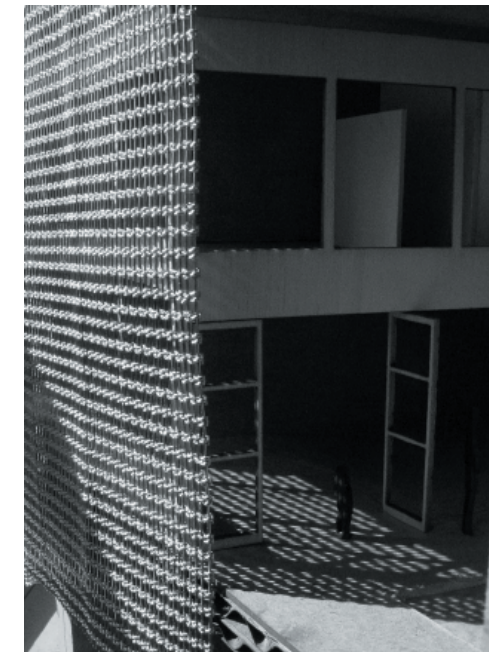
Screening affect as on section model



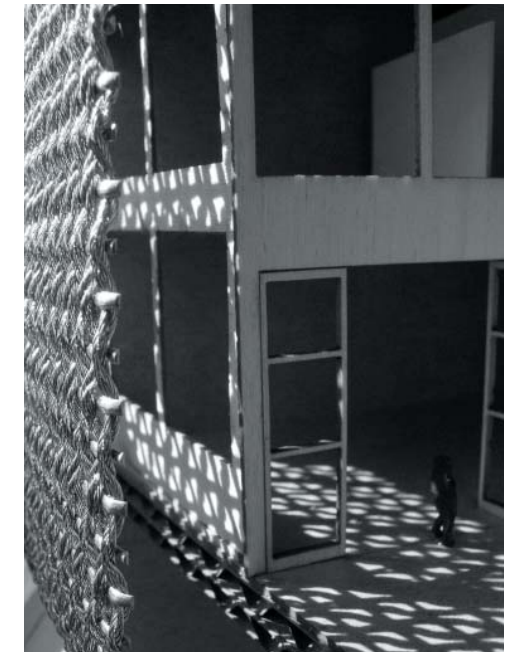
view into residence garden



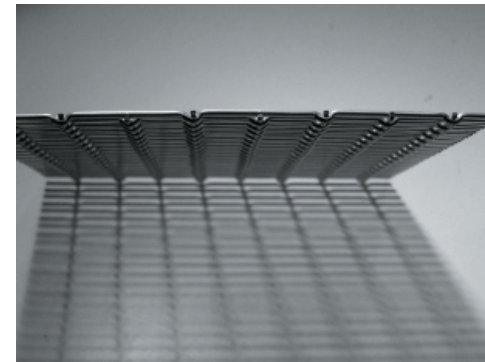
material: aluminum open area: 32%
weight: .48 lbs/sqft thickness: .130"



material: bronze open area: 37%
weight: .50 lbs/sqft thickness: .053"

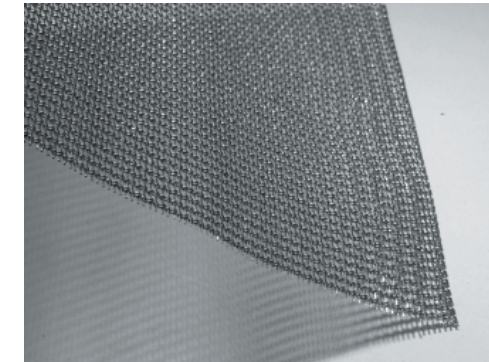


material: stainless steel open area: 32%
weight: .90 lbs/sqft thickness: .136"



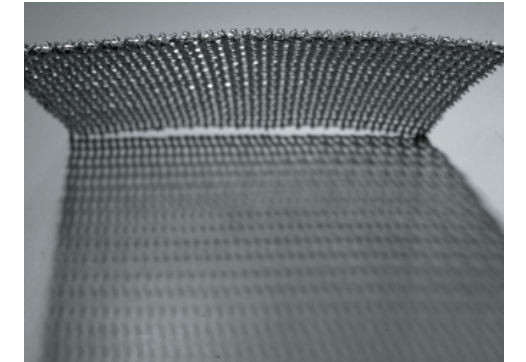
This rigid screen creates a very appealing facade from the outside, with its unique pattern of interlocking aluminum bands.

Unfortunately, the strong presence of the distinct horizontal and vertical members give an affect similar to bars on the windows. This screen is also fairly thin and, therefore, does not create the deep shadows of the other two screens tested.



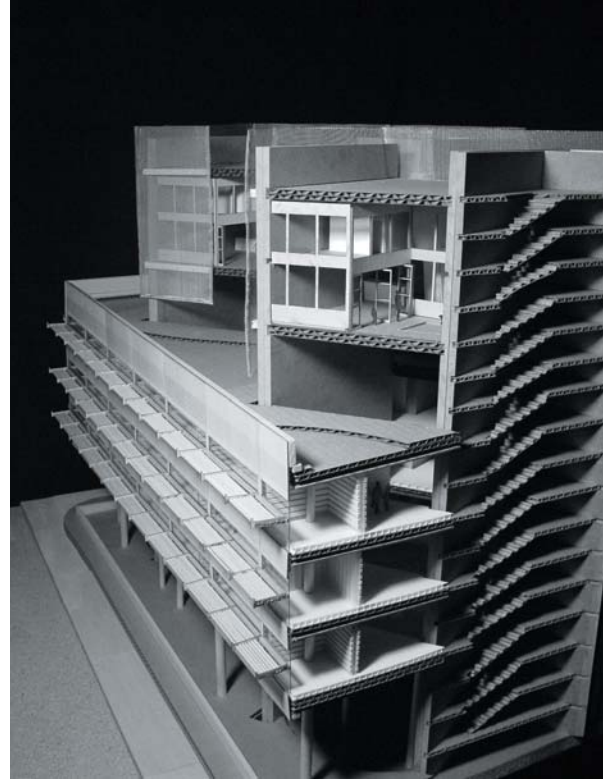
This screen was nice for its uniform texture and the minimal amount of interference with the view. When placed within view this screen easily dissolves, allowing the background images to appear in focus.

However, after further consideration, it seemed that this screen disappeared too easily and did not contrast enough with the open glazing of the garden spaces.



This option is the heaviest of the three and combines rigid stainless steel bars with a stainless steel rope woven into them. This gives this screen a greater depth than the other two and the weaving breaks up the strength in appearance of the horizontal steel members.

Not only does this screen cast intricate shadows, but its depth gives a directionality to the screen so that from straight on it is semi-transparent and when viewed from other angles becomes opaque. Given the similar directional nature of the residences, this screen seemed to most appropriately fit the project.



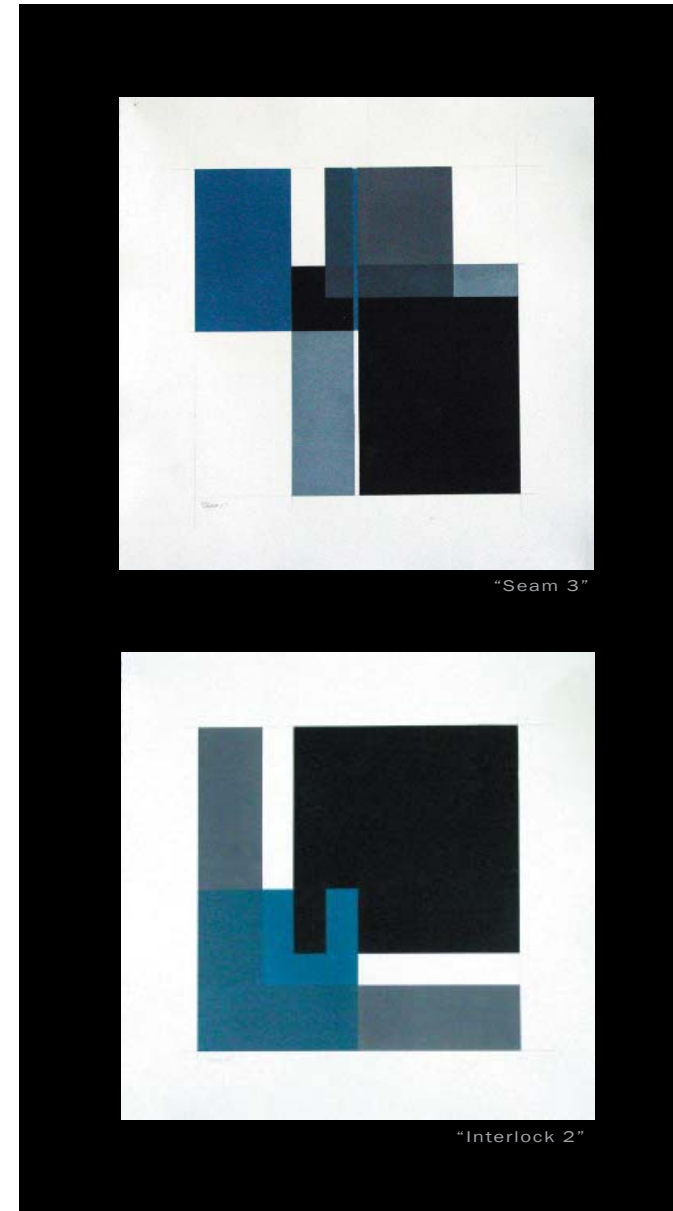
Building Sections



In reflecting on the project, it became apparent that the meeting of the two programs was less of a joint and more of a union. Through the graphic studies, the layering of inks brought a realization that when two overlap they create a third level within their transparencies. This is very similar to the design for this building, in that the meeting of the two make a third space and a third program.

This union not only occurs in the physical meeting of the building but also in the functional and experiential as well. It is a place where learning is not just part of the day, but a real part of life. This is the real success of the thesis. This building brings the school into the life of the family as a place for gathering after school hours and brings the school into the life of the community as a energizing moment on the street in a once abandoned urban area.

Postscript



All images created by author.

Photography credits

(2002). Architecture for Education. New School Designs from the Chicago Competition, Chicago, Tien Wah Press.

Bartley, M. (1994). St. Louis Lost: Uncovering the Cities Lost Architectural Treasures. St. Louis, Missouri, Virginia Publishing Company.

Baybeck, B. E. T. J., Ed. (2004). St. Louis Metromorphosis: Past Trends and Future Directions. St. Louis, Missouri, Missouri Historical Society Press.

Bergeijk, H. v. (1997). Herman Hertzberger. Basel, Switzerland, Birkhauser Verlag.

Caudill, W. (1970). From Infancy to Infinity, Wall Company, Inc.

Dudek, M. (2000). Architecture of Schools: the New Learning Environments. Oxford, Architectural Press.

Krier, R. (2003). Town Spaces. Basel, Switzerland, Birkhauser.

Levene, F. M. C. a. R. (2004). "SANAA Kazuyo Sejima + Ryue Nishizawa." El Croquis 121/122.

Lipsitz, G. (1991). The Sidewalks of St. Louis: Places, People, and Politics in an American City. Columbia, Missouri, University of Missouri Press.

McNulty, E. (2000). St. Louis Then and Now. London, PR C Publishing Ltd.

Mumford, E., Ed. (2004). Modern Architecture in St. Louis. St. Louis, Missouri, School of Architecture Washington University in St. Louis.

Piaget, B. I. a. J. (1967). The Child's Conception of Space. London, Routledge & Kegan Paul.

Roode, L. L. I. d., Ed. (2002). Aldo Van Eyck: the playgrounds and the city. Rotterdam, NAI Publishers Rotterdam.

Sandweiss, E. (2001). St. Louis: The Evolution of an American Urban Landscape. Philadelphia, Temple University Press.

Bibliography