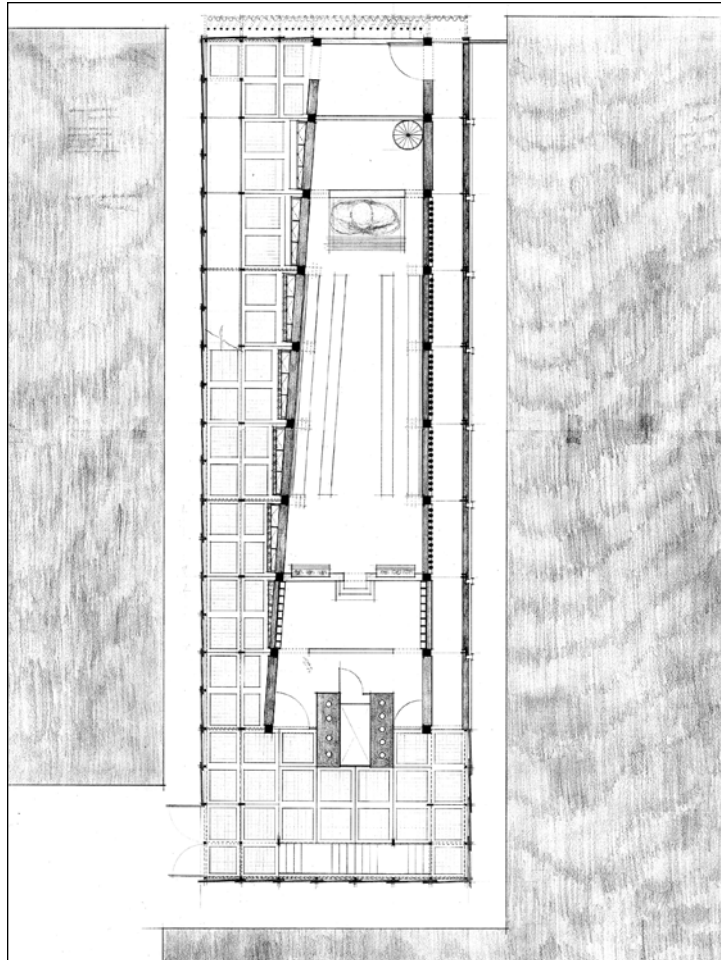
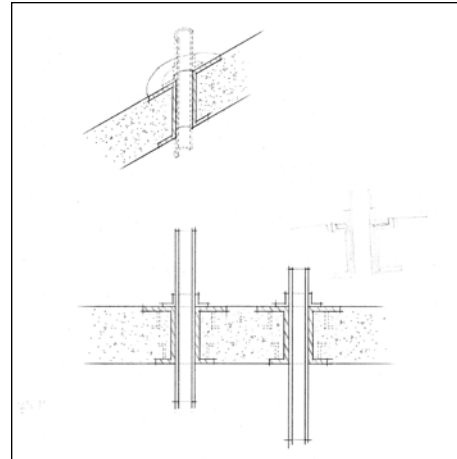


## PLAN / SMOKE & SOUND PIPE DETAILS

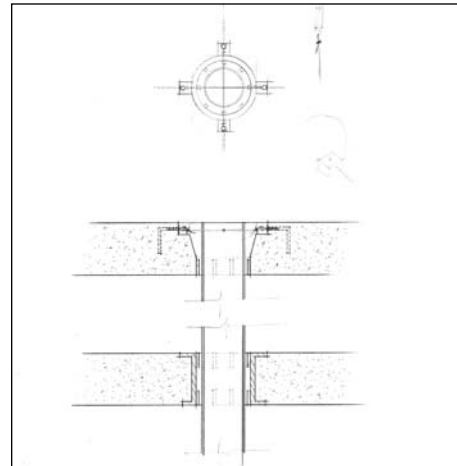


Chanting Hall Plan

Scale: 1" = 25'



Smoke Pipe Detail



Sound Pipe Detail

The plan reveals details of the ground level: glass blocks of the atrium floor, prayer wheels inset into the east wall, planters and benches along the west wall, the beginning of the ramp system in the atrium, and a row of iron rods planted along the northern edge of the site.

The detail drawings show the mechanics of the smoke and sound pipes. The smoke pipes reach up only to the interstitial level whereas the sound pipes extend to the gallery level.