

Fourteen Columns

William Andrew Hazel III

Thesis submitted to the faculty of the Virginia Polytechnic Institute and State University in partial fulfillment
of the requirements for the degree of

Master of Architecture

in

Architecture

Frank H. Weiner, Committee Chair

Steve Thompson

Kay F. Edge

August 8th, 2012
Blacksburg, VA

(KEYWORDS)

Columns, Character, Formal, Physical, Architecture, Photography

Fourteen Columns

William Andrew Hazel III

ABSTRACT

The thesis inquiry is a study of the interrelations between character, emotion and rationality in architecture. The primary modes of representation are digital still photography and hand drawing. To best illuminate these issues the work of the eye and hand of the architect play a vital role. Pastel, pencil and charcoal are the preferred media for the works on paper. Programmatically the building is a boathouse for eight-men crew shells.

The boathouse is embedded into an ideal hillside, with one curved side angled slightly to the water and the landscape beyond. Together with a generous curved roof running the length of the boathouse they provide a covered architectural prow and dry sanctuary below for the storage of the crew shells. From the prow above one has an expansive overlook on the water and the varied activities upon it.

In the thesis project water is not seen as a substance, but rather as a material with a capacity to influence the character of the interior space. For example in the lower level of the boathouse there are small windows adjacent to an artificial water basin. Filtered sunlight passes through the water collected in the basin and then through the small windows. This condition allows a subtle colored light to pervade the lower space.

Another important aspect of this building is a consideration of the twenty-four hour rhythm of day and night. For much of the rowing community, mornings and afternoons are when races or practice activities occur. However the building must be able to show itself when the sun is arriving and departing. In the morning the boathouse and its interior act as an invitation to the rising sun. At night the building provides light to gently illuminate the darkening surroundings at dusk – similar to a lighthouse resting on its side for shells to navigate towards.

This book is dedicated to my grandparents.

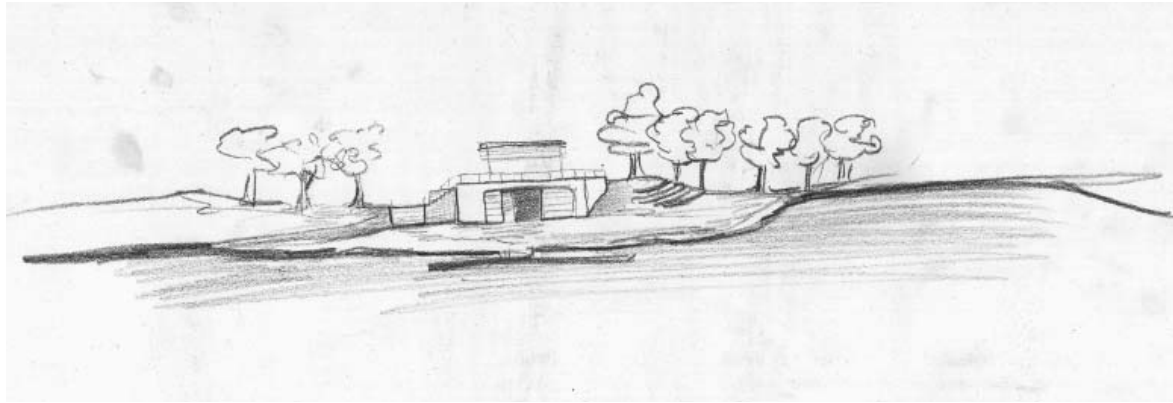
*William A. and Eleanor C. Hazel
Gerald D. and Mildred C. Love*

Thank you.

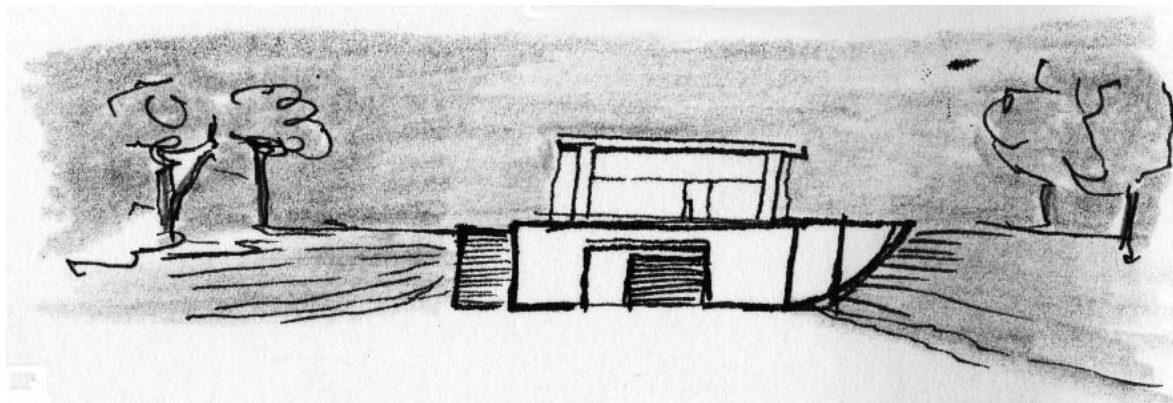
Table of Contents

Page	Figure	Description	Medium
1	1	Sketch from waterfront	Charcoal
	2	Sketch from water	Pen and Pencil
	3	Sketch of Side from water	Charcoal
2	4	Solid Glass Block	Photograph
3	5	Preliminary Study	Pastel
	6	Preliminary Study	Pastel
4	7	Preliminary Plan and Section	Pencil on Tracing Paper
5	8	Preliminary Structural Drawings	Pencil on Vellum
	9	Preliminary Structural Drawings	Pencil on Vellum
6	10	Drawing of a Single Skull (Re-Drawn by author from Chesapeake Light Craft's Oxford Shell)	Pencil on Vellum
7	11	Plan / Section Study	Pencil on Vellum
8	12	Section / Interior Elevation Study	Pencil on Vellum
9	13	Axonometric Study	Pencil on Vellum
10	14	Detail of Figure 8	Pencil on Vellum
11	15	Study Model	Photograph
	16	Derring Hall, Blacksburg, VA	Photograph
12	17	Preliminary sketch of upper level looking towards the water	Pen
	18	Preliminary sketch of boat and curve wall in lower level	Pen and Color Pencil
13	19	Preliminary sketch of glass block windows in relation to structure	Pen
14	20	Photograph of Desk	Photograph
15	21	Transverse Sectional Studies	Charcoal
16	22	Longitudinal Sectional Studies	Charcoal and Conté
19	23	Longitudinal Sectional Studies	Charcoal
20	24	Zurich, Switzerland, 2011	Photograph
21	25	Sketch of Column Base	Pencil
22	26	Sketch of Column and Support	Pencil
23	27	Detail of Column	Pencil
24	28	Elevation study at night	Charcoal
26	29	Sketch of Relation of Curve Wall and Column Line	Pencil
	30	Sketch of Lower level with rectangle Stairs	Pencil
	31	Sketch of Lower level with Curved Stairs	Pencil
27	32	Sketch of Lower Level Entrance Condition	Pencil
	33	Sketch of Lower Level Entrance Condition	Pencil
	34	Sketch of Lower Level Entrance Condition	Pencil
28	35	Detail of Figure 37	Pencil
29	36	Sketch of Interior	Pencil
30	37	Drawing of Lower Level	Pencil
	38	Drawing of Lower Level	Pencil
31	39	Detail of Figure 38	Pencil
32	40	Sketch of Lower Level Entrance Condition	Pencil
33	41	Detail of Figure 37	Pencil
34	42	Plan of Upper Level	Pencil on Vellum
	43	Plan of Lower Level	Pencil on Vellum
35	44	Exterior Elevation	Pencil on Vellum
	45	Plan of Lower Level with stairs	Pencil on Vellum
36	46	Reggio Emilia, Italy, 2011	Photograph
37	47	Siwa Oasis, Egypt, 2010	Photograph
38	48	New Haven, USA, 2011	Photograph
39	49	Alexandria, Egypt, 2010	Photograph
40	50	Photography Exhibition in Cowgill Hall (August 2012)	Photograph
41	51	Idea for a stair	Charcoal and Conté

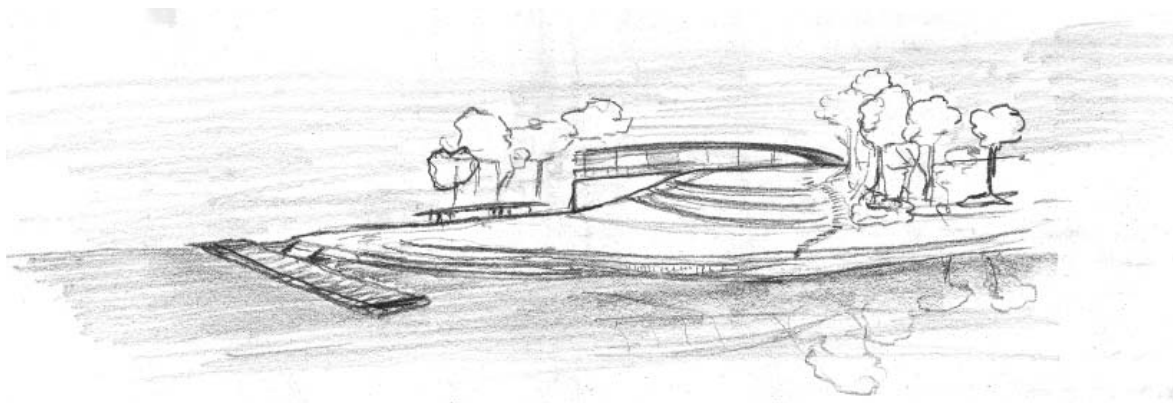
All drawings, photographs, and images are by author.



1.



2.



3.

FIGURE 1. Sketch from waterfront. *Charcoal*

FIGURE 2. Sketch from waterfront. *Pen and Pencil*

FIGURE 3. Sketch of Side from water. *Charcoal*

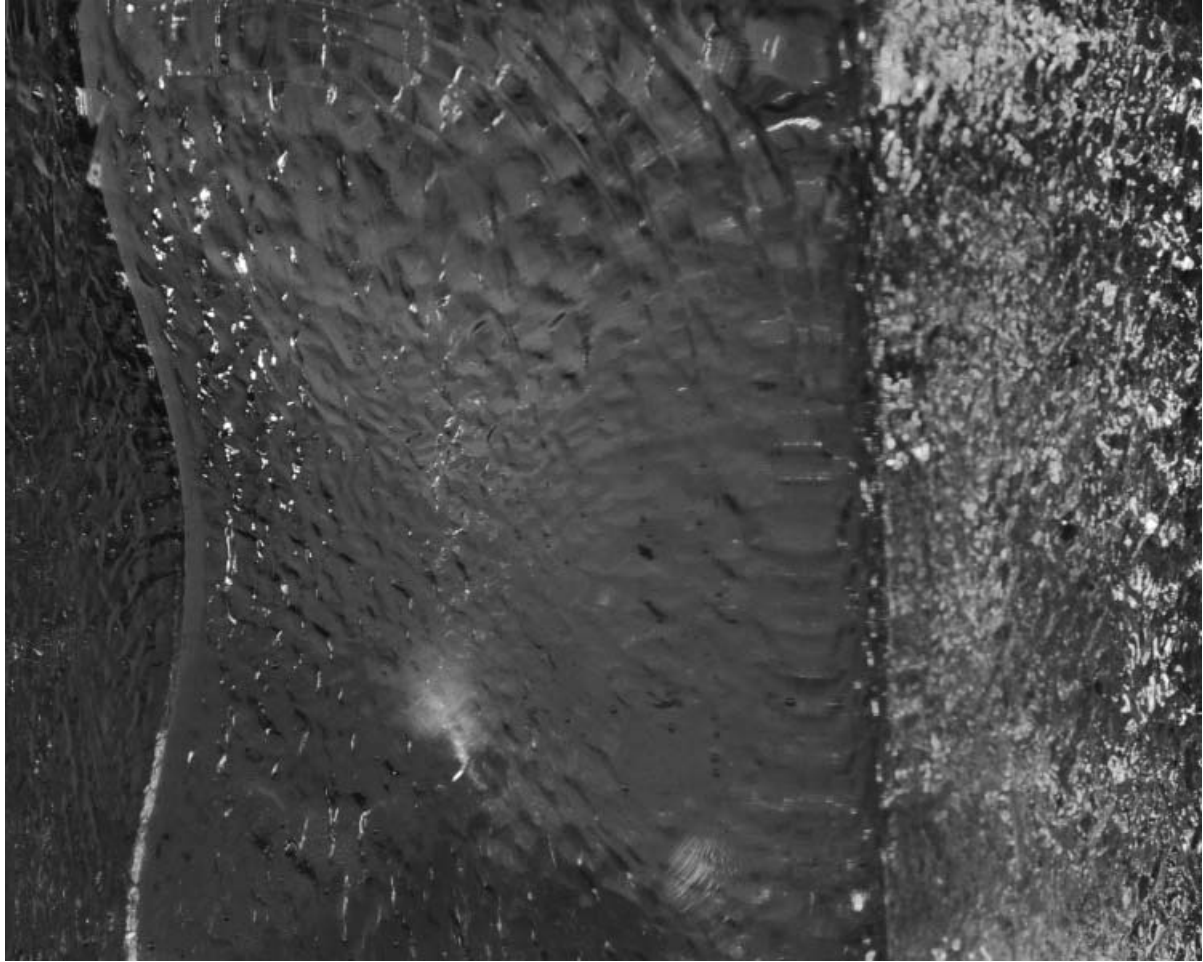


FIGURE 4. Solid Glass Block. *Photograph*



5.



6.

FIGURE 5. Preliminary Study. *Pastel*

FIGURE 6. Preliminary Study. *Pastel*

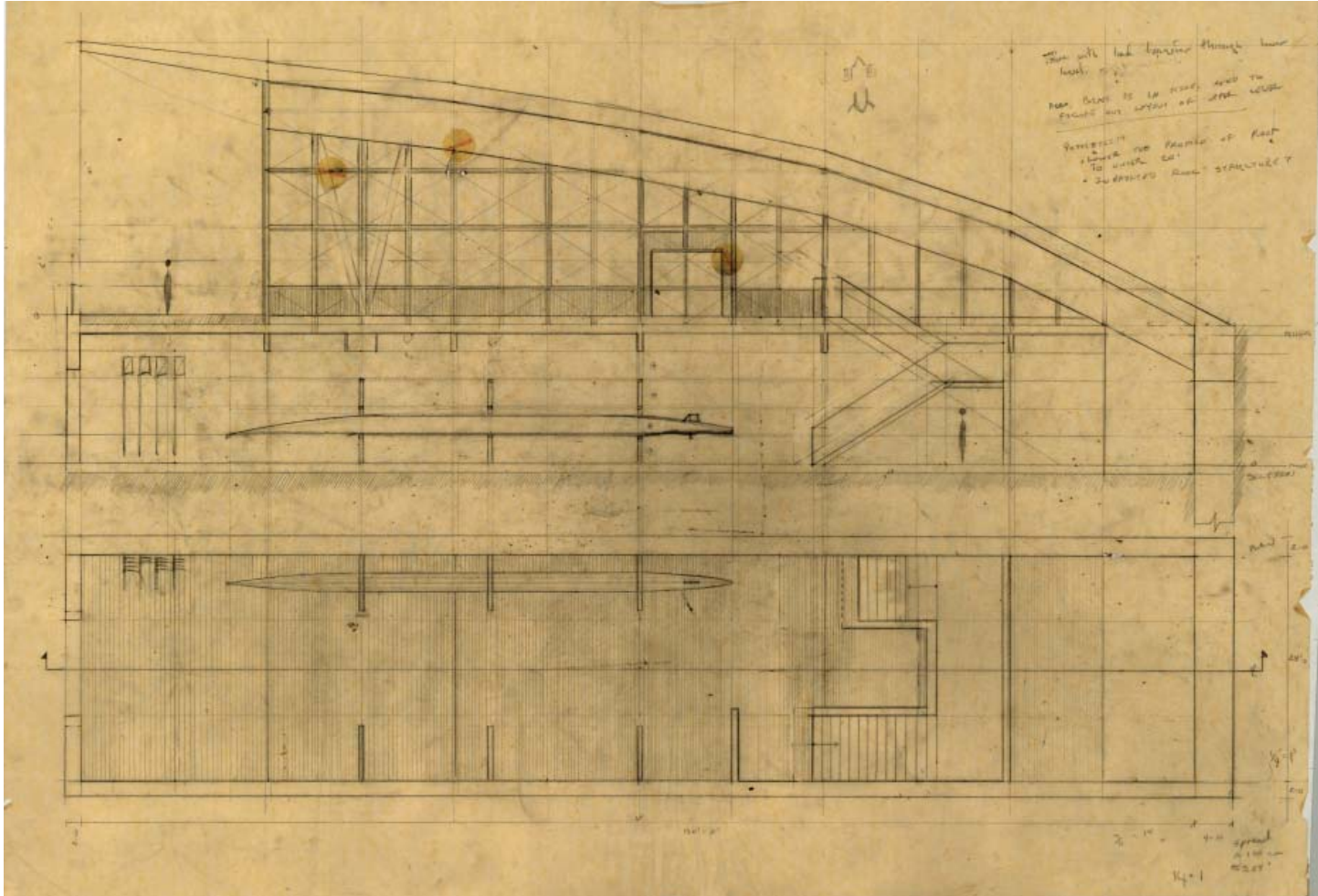
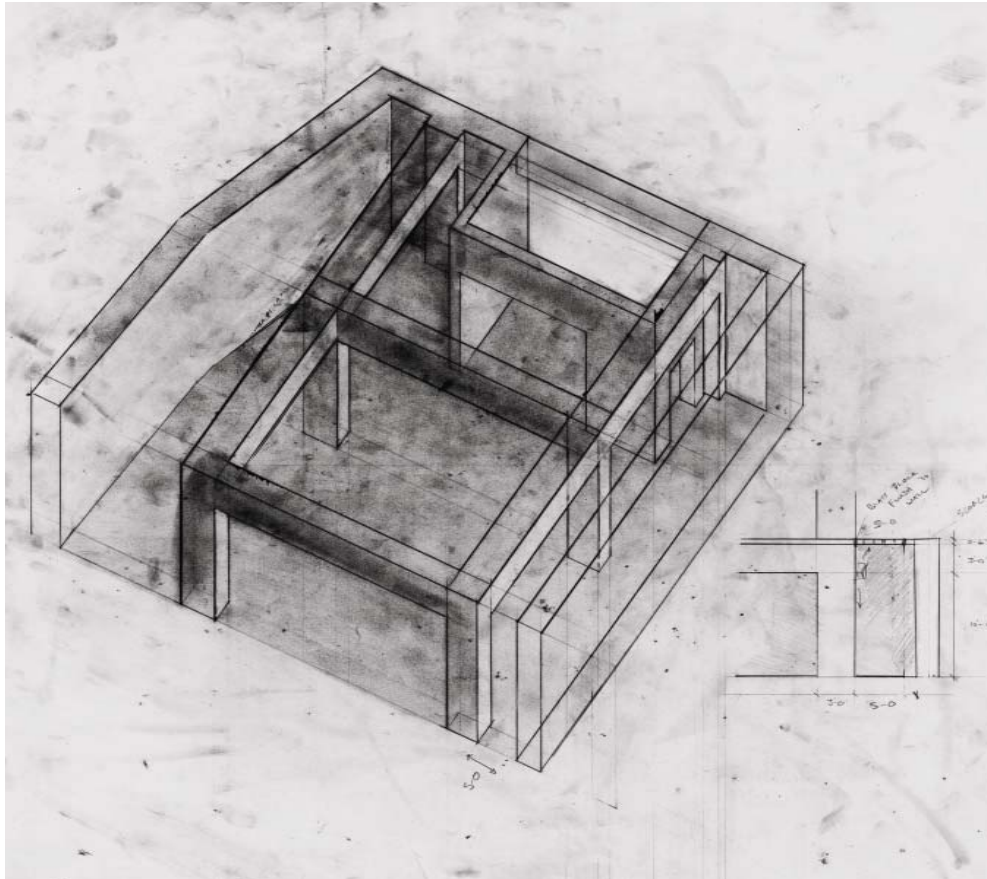
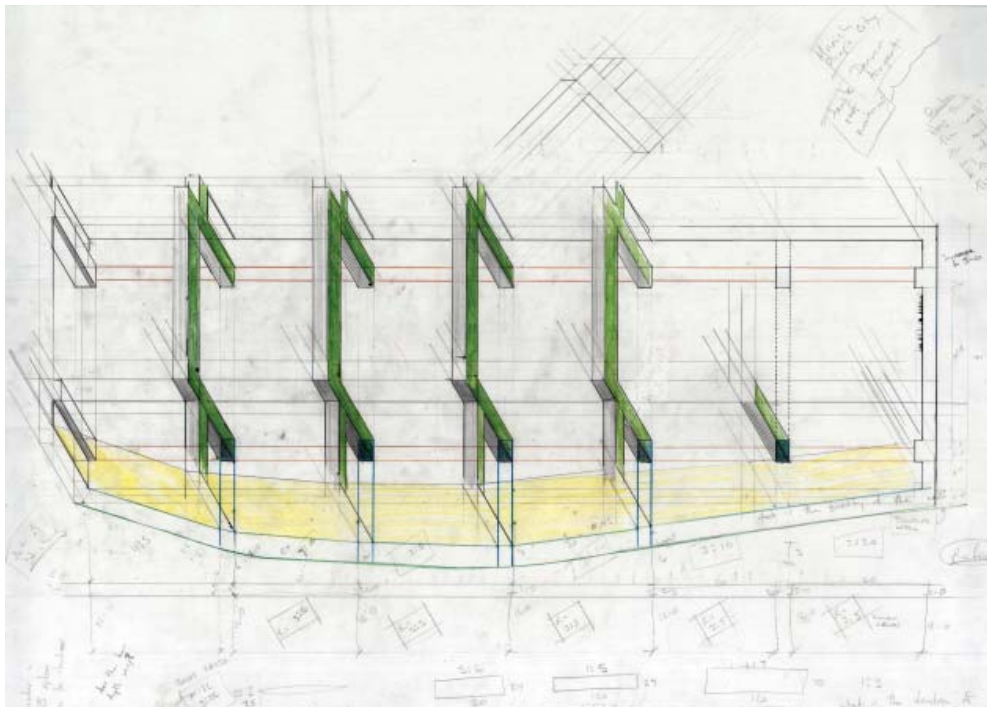


FIGURE 7. Preliminary Plan and Section. Pencil on Tracing Paper



8.



9.

FIGURE 8. Preliminary Structural Drawings. *Pencil on Vellum*

FIGURE 9. Preliminary Structural Drawings. *Pencil on Vellum*

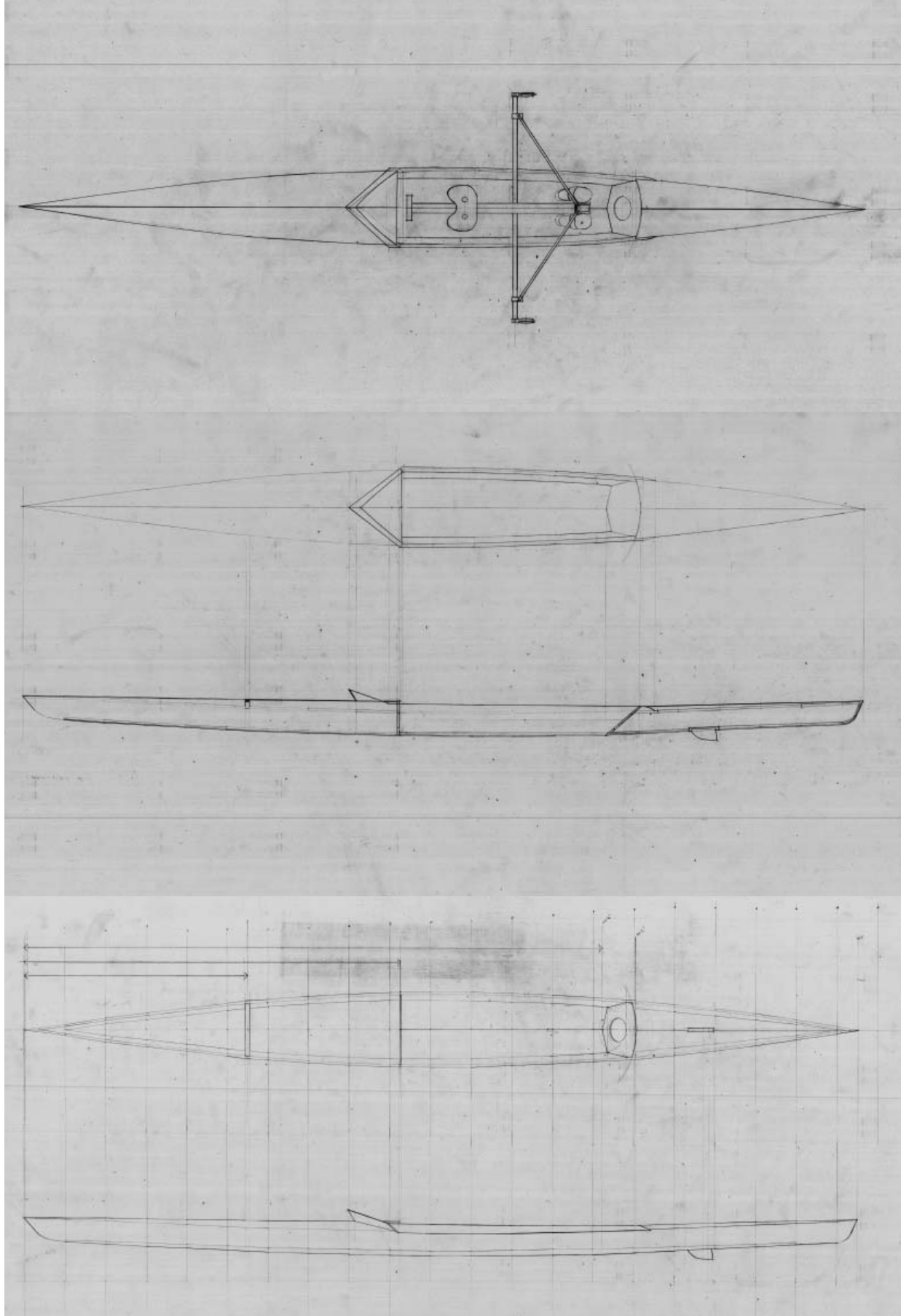


FIGURE 10. Drawing of a Single Skull. *Pencil on Vellum*

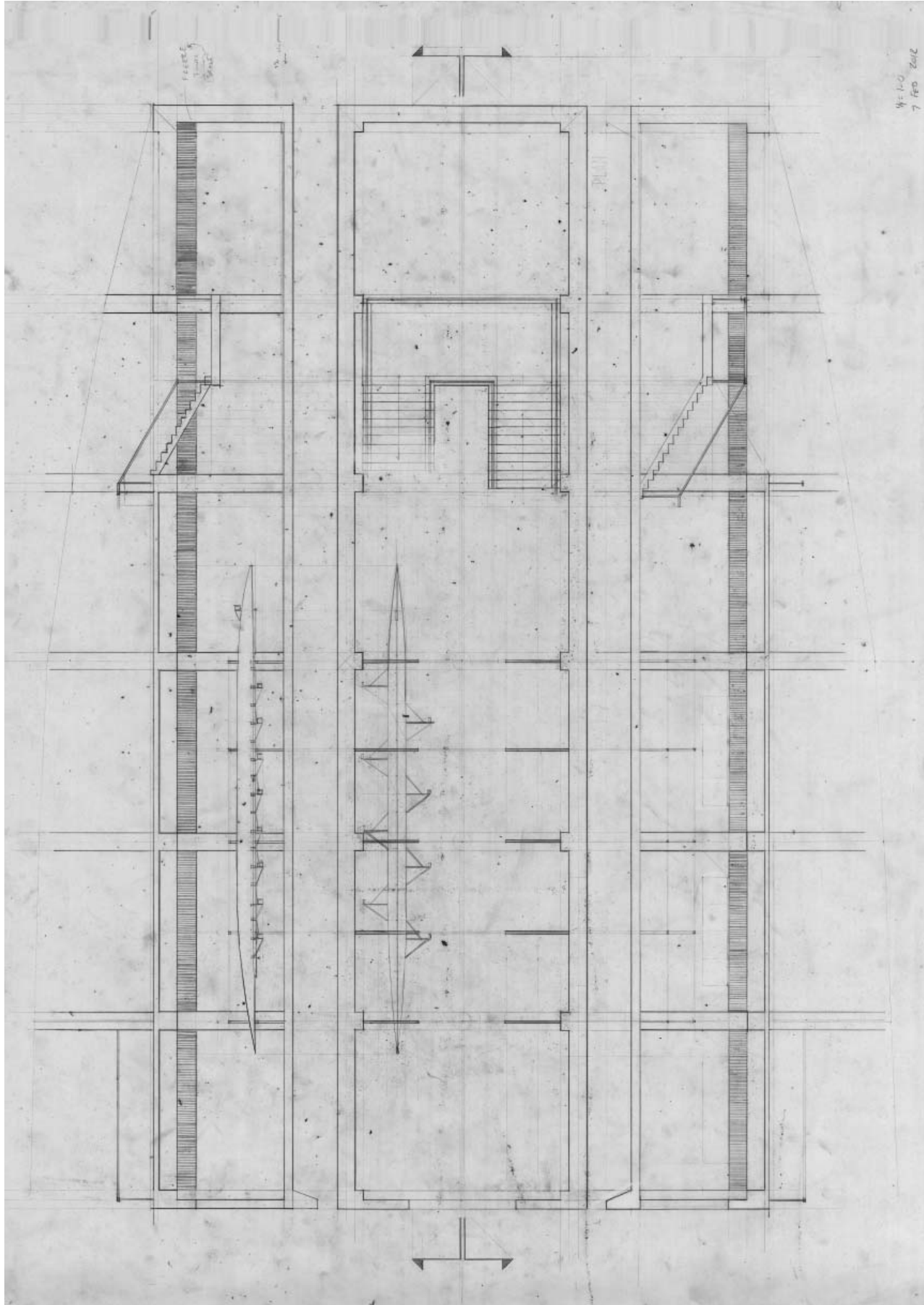


FIGURE 11. Plan / Section Study. *Pencil on Vellum*

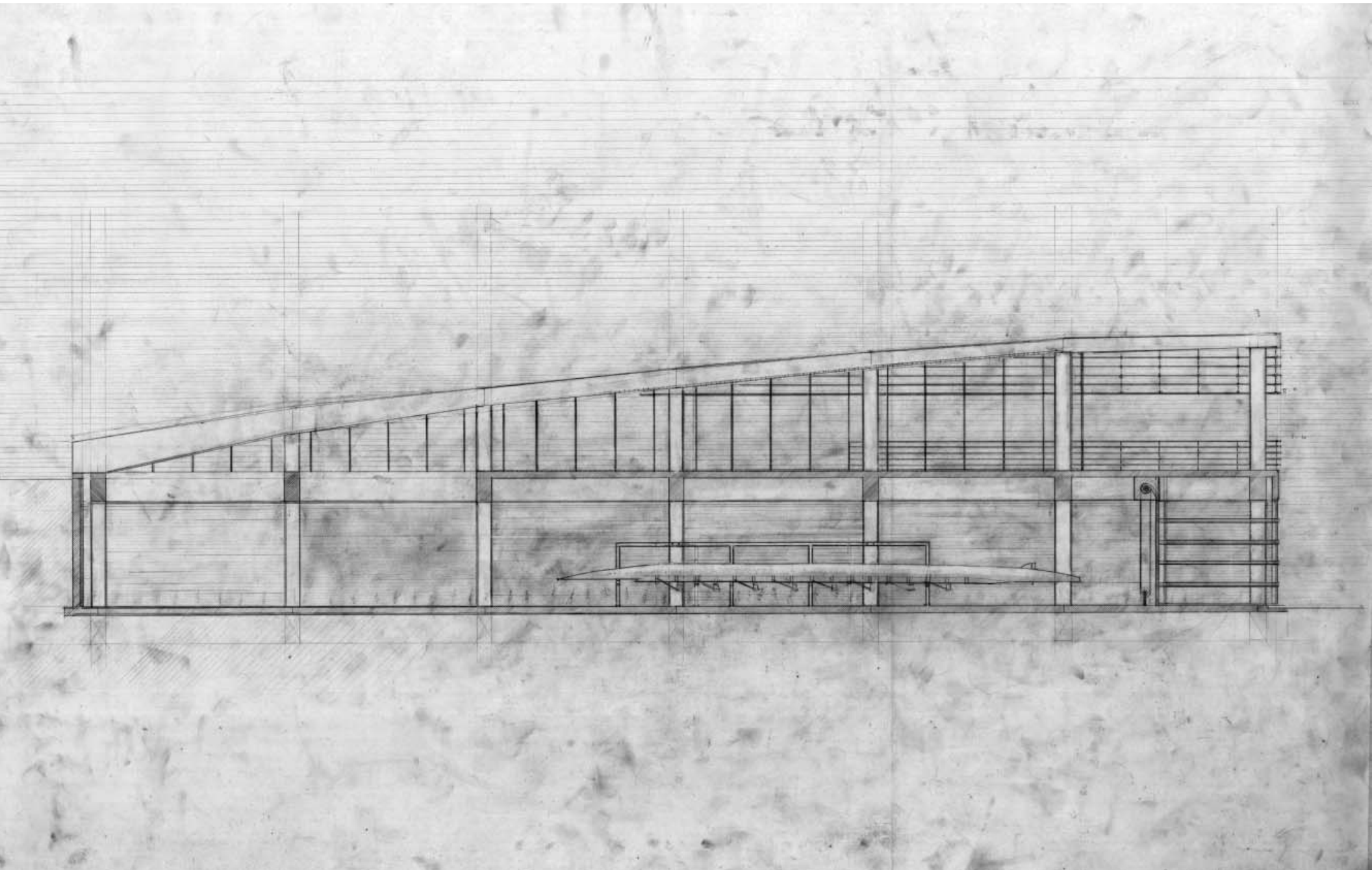


FIGURE 12. Section / Interior Elevation Study. *Pencil on Vellum*

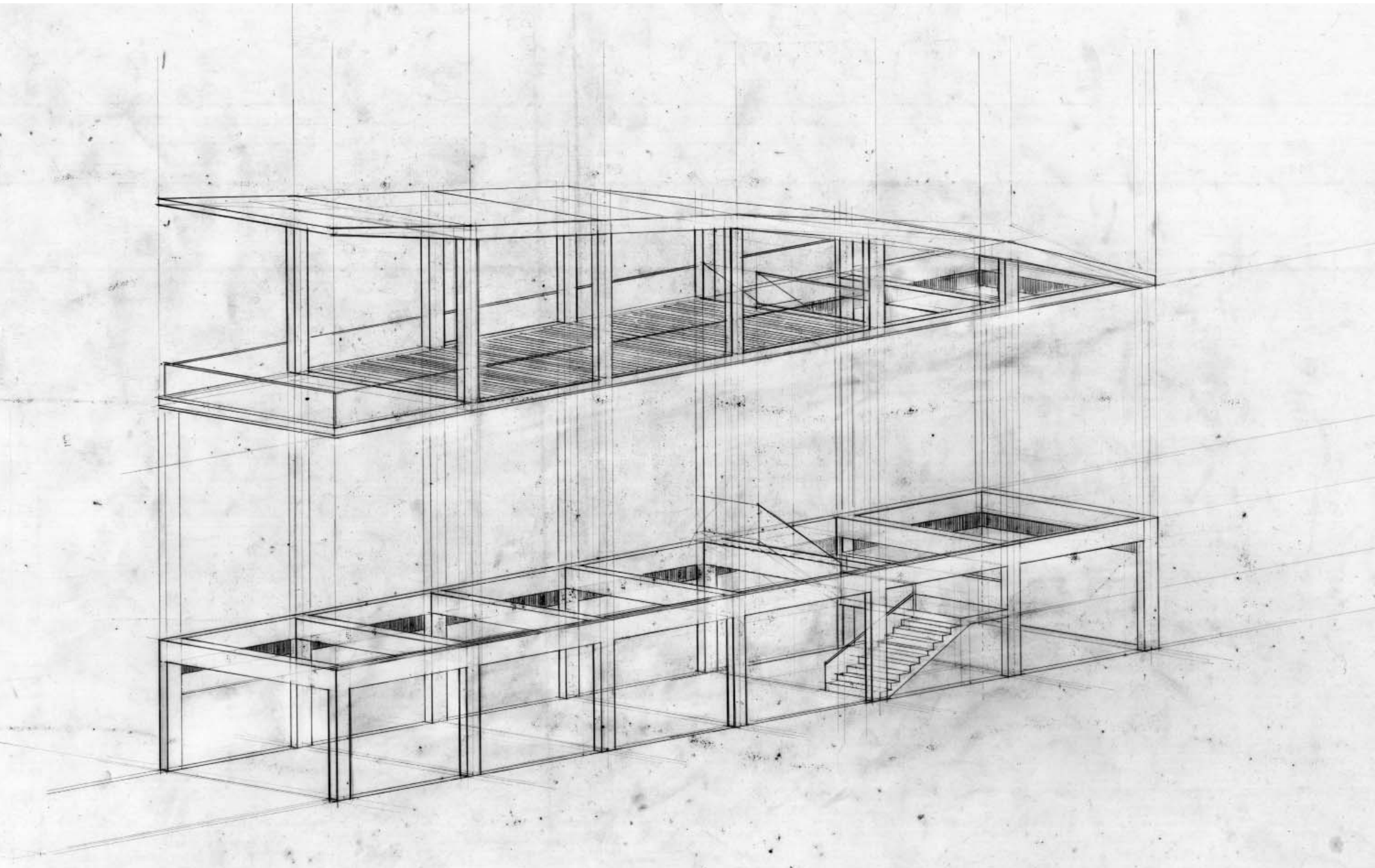


FIGURE 13. Axonometric Study. *Pencil on Vellum*

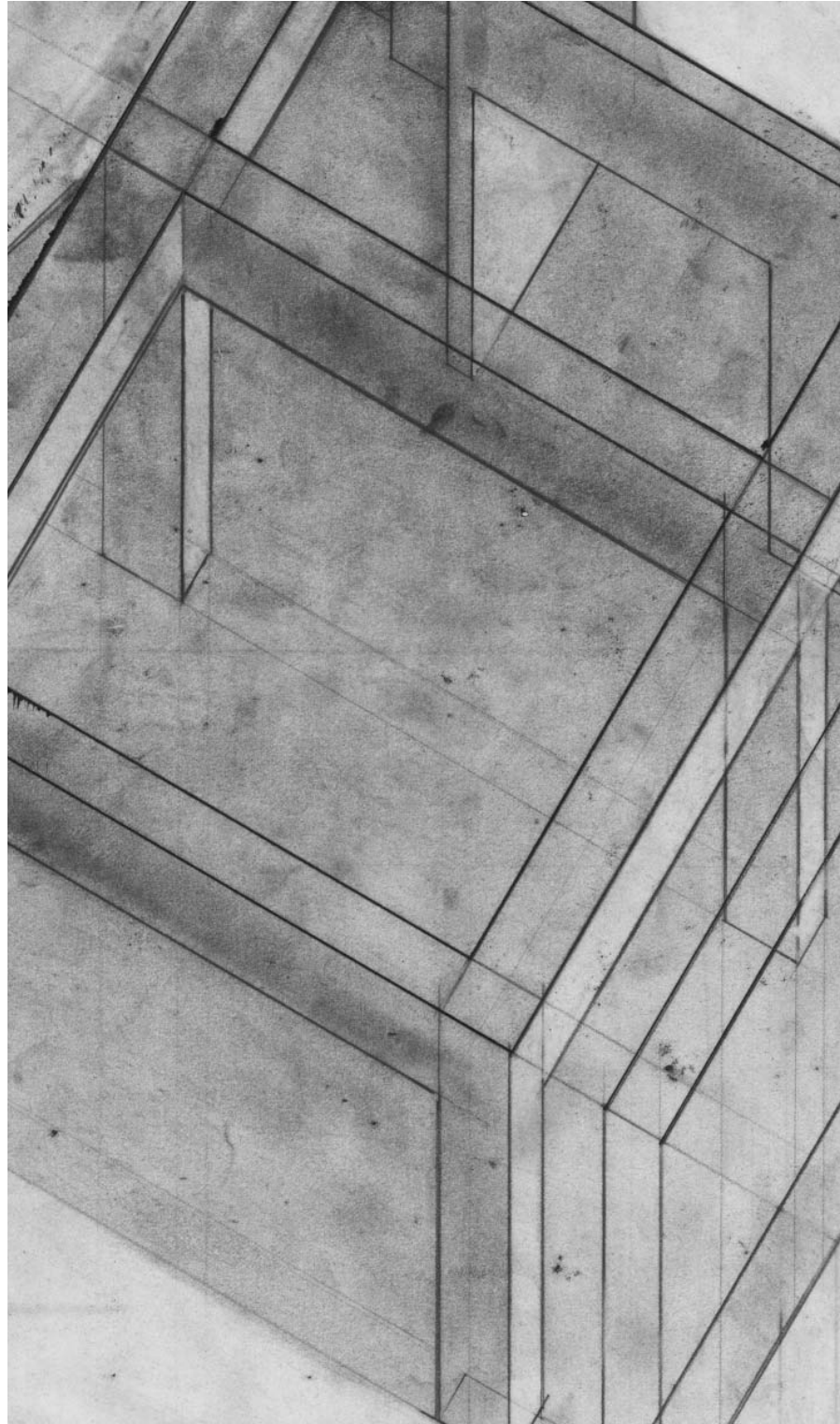
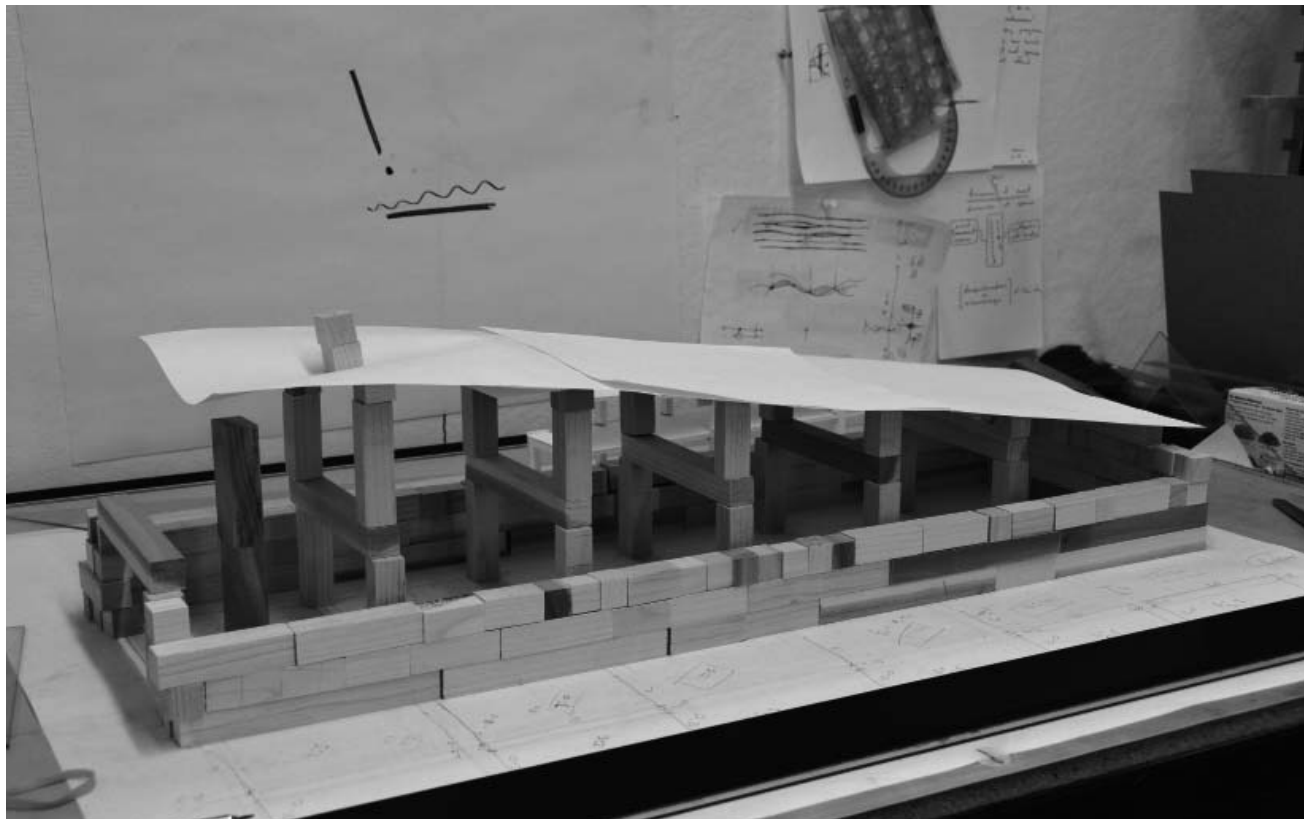


FIGURE 14. Detail of Figure 8. *Pencil on Vellum*



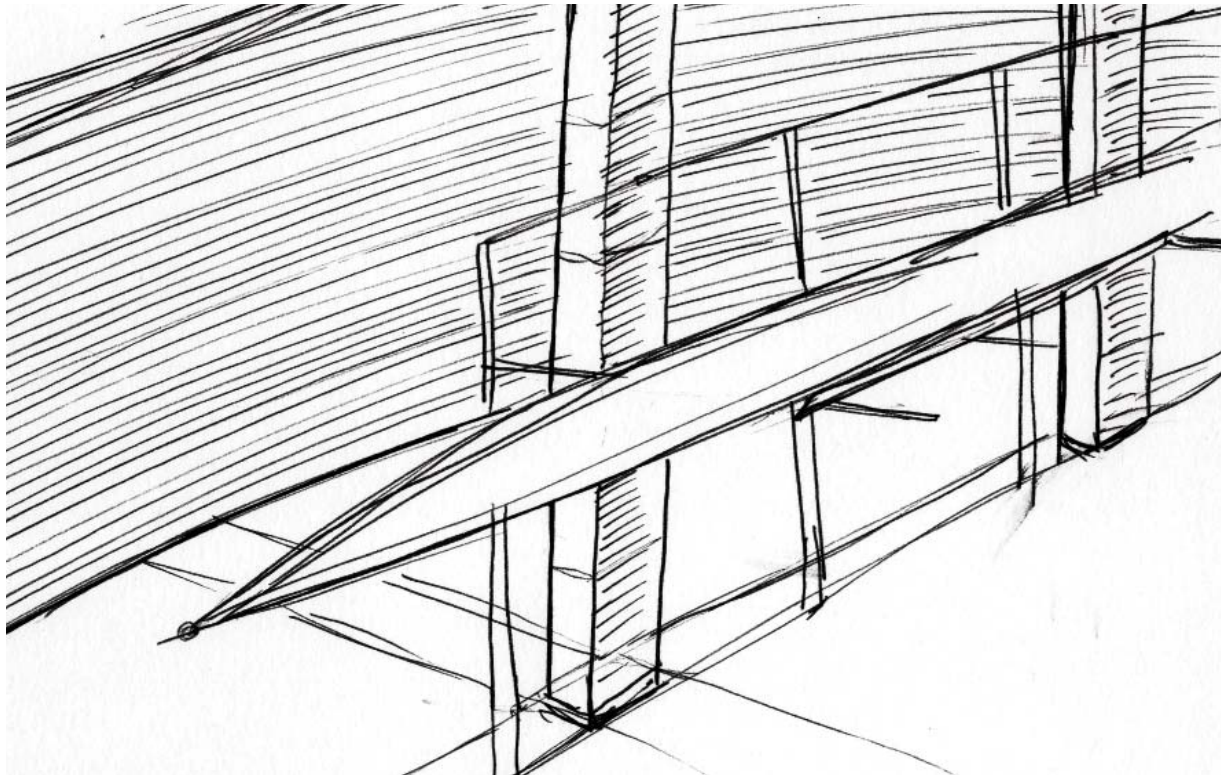
15.



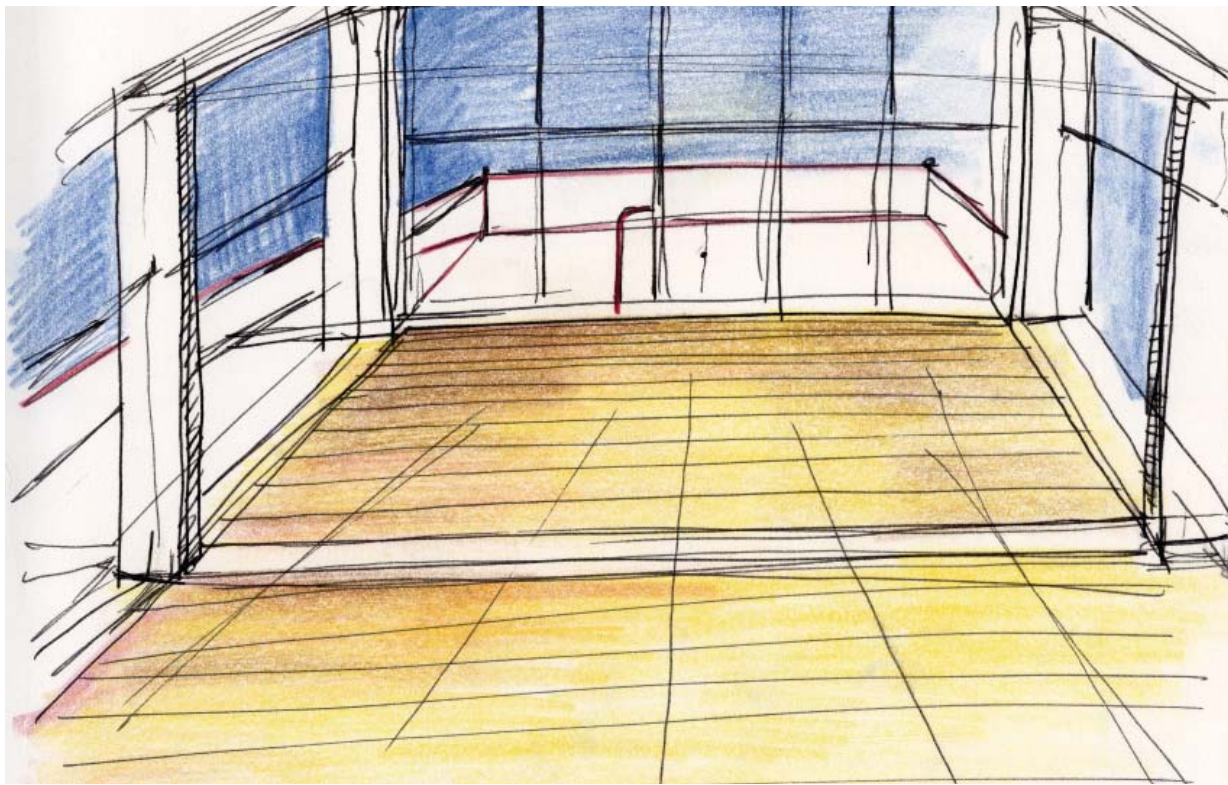
16.

FIGURE 15. Study Model. *Photograph*

FIGURE 16. Derring Hall, Blacksburg, VA. *Photograph*



17.



18.

FIGURE 17. Preliminary sketch of upper level looking towards the water. *Pen*
FIGURE 18. Preliminary sketch of boat and curve wall in lower level. *Pen and Color Pencil*

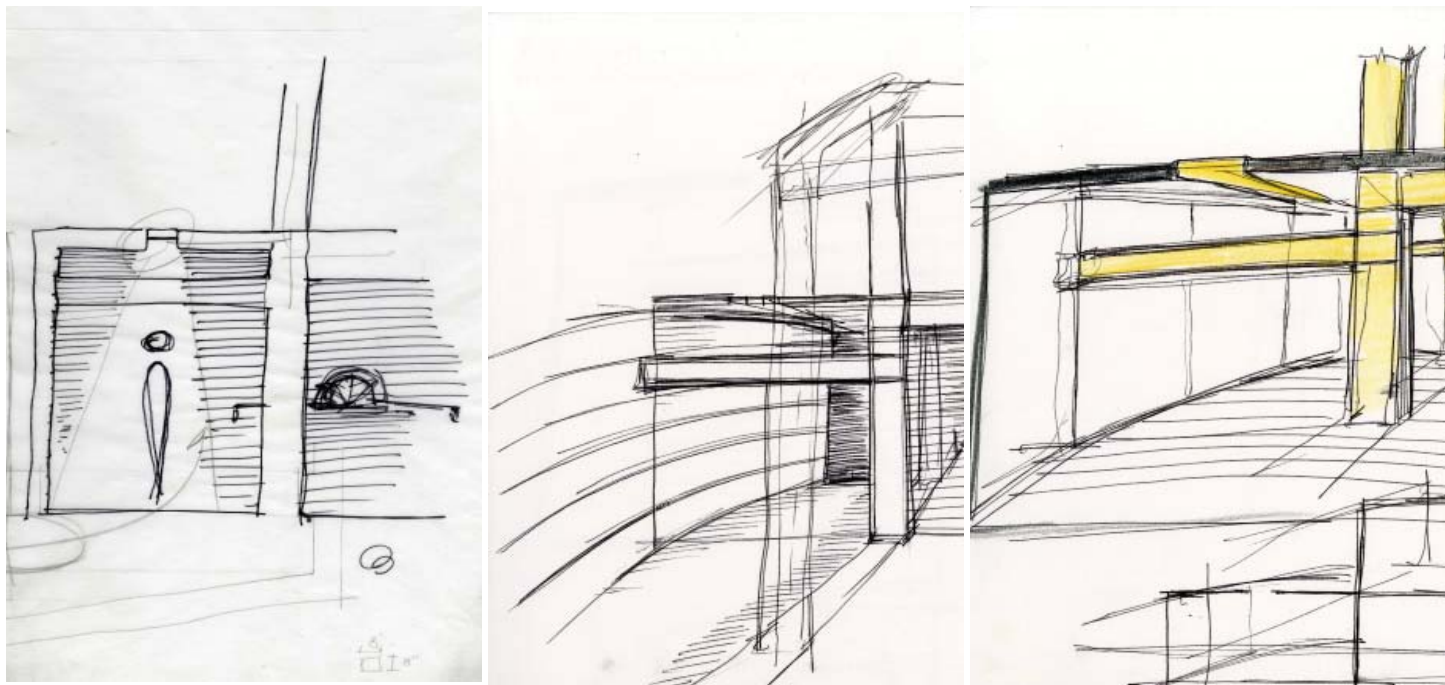


FIGURE 19. Preliminary sketch of glass block windows in relation to structure. *Pen*



FIGURE 20. Photograph of Desk. *Photograph*

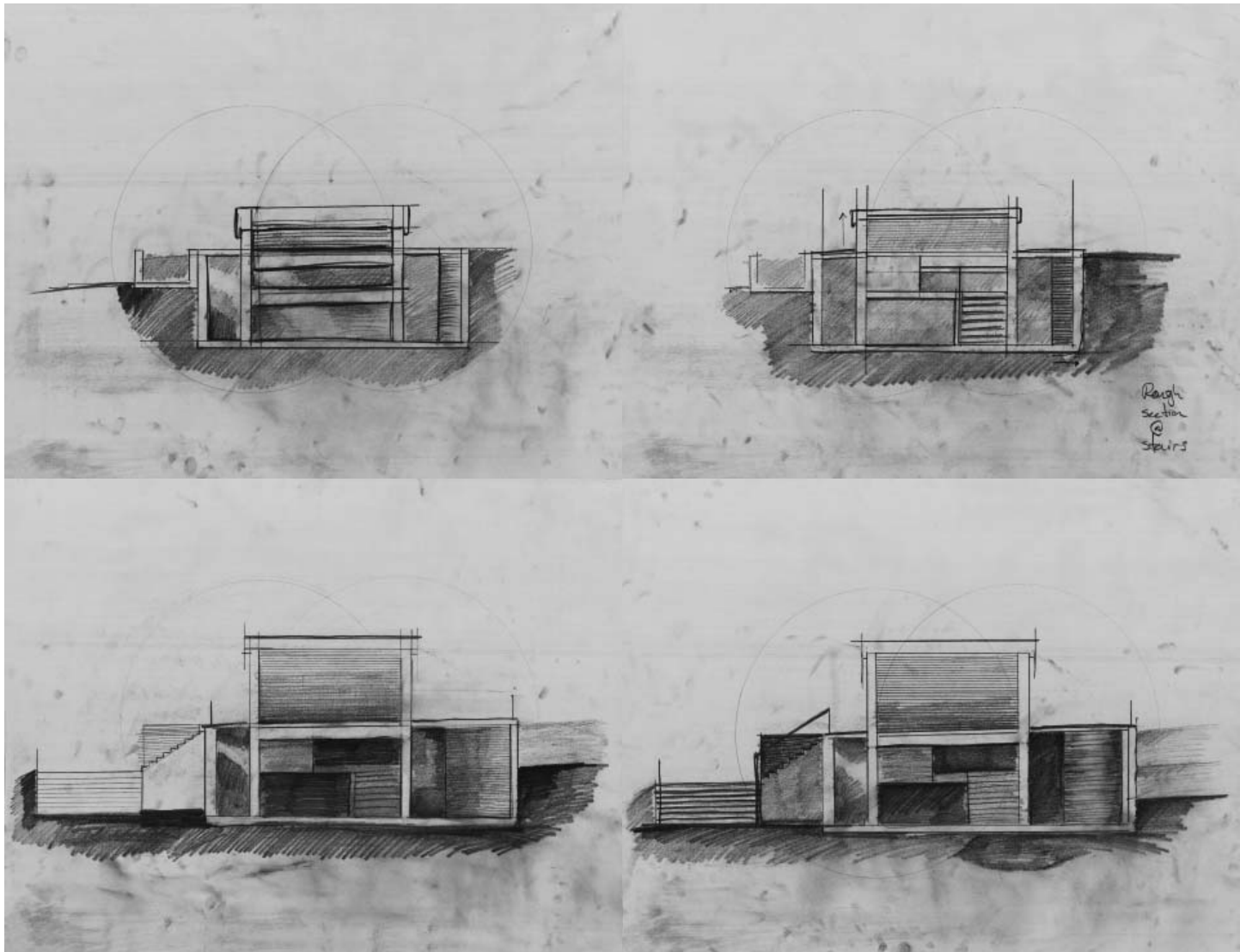


FIGURE 21. Transverse Sectional Studies. *Charcoal*



FIGURE 22. Longitudinal Sectional Studies. *Charcoal and Conté*



FIGURE 22. Longitudinal Sectional Studies. *Charcoal and Conté*



FIGURE 22. Longitudinal Sectional Studies. *Charcoal and Conté*

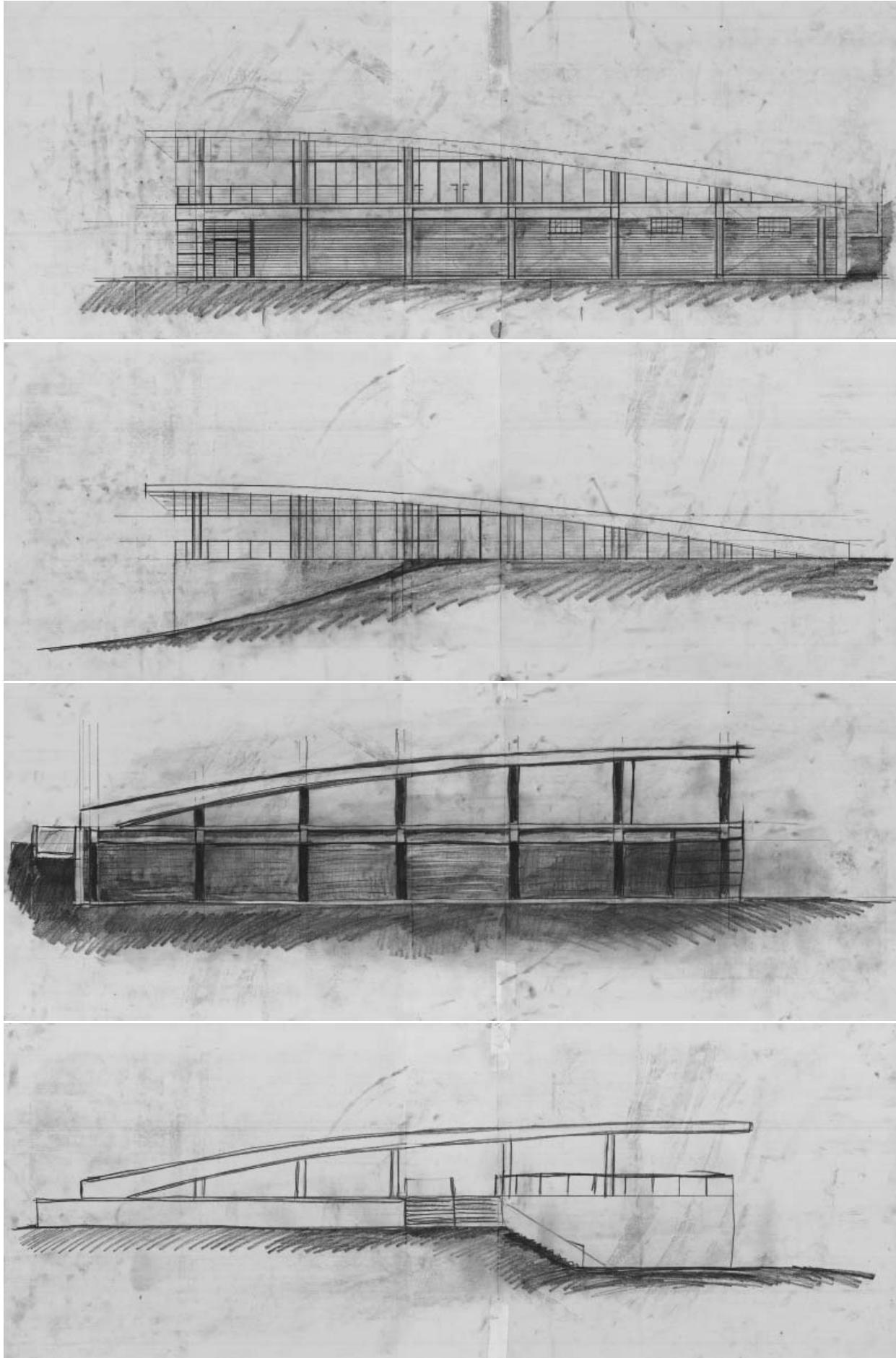


FIGURE 23. Longitudinal Sectional Studies. *Charcoal*



FIGURE 24. Zurich, Switzerland, 2011. *Photograph*

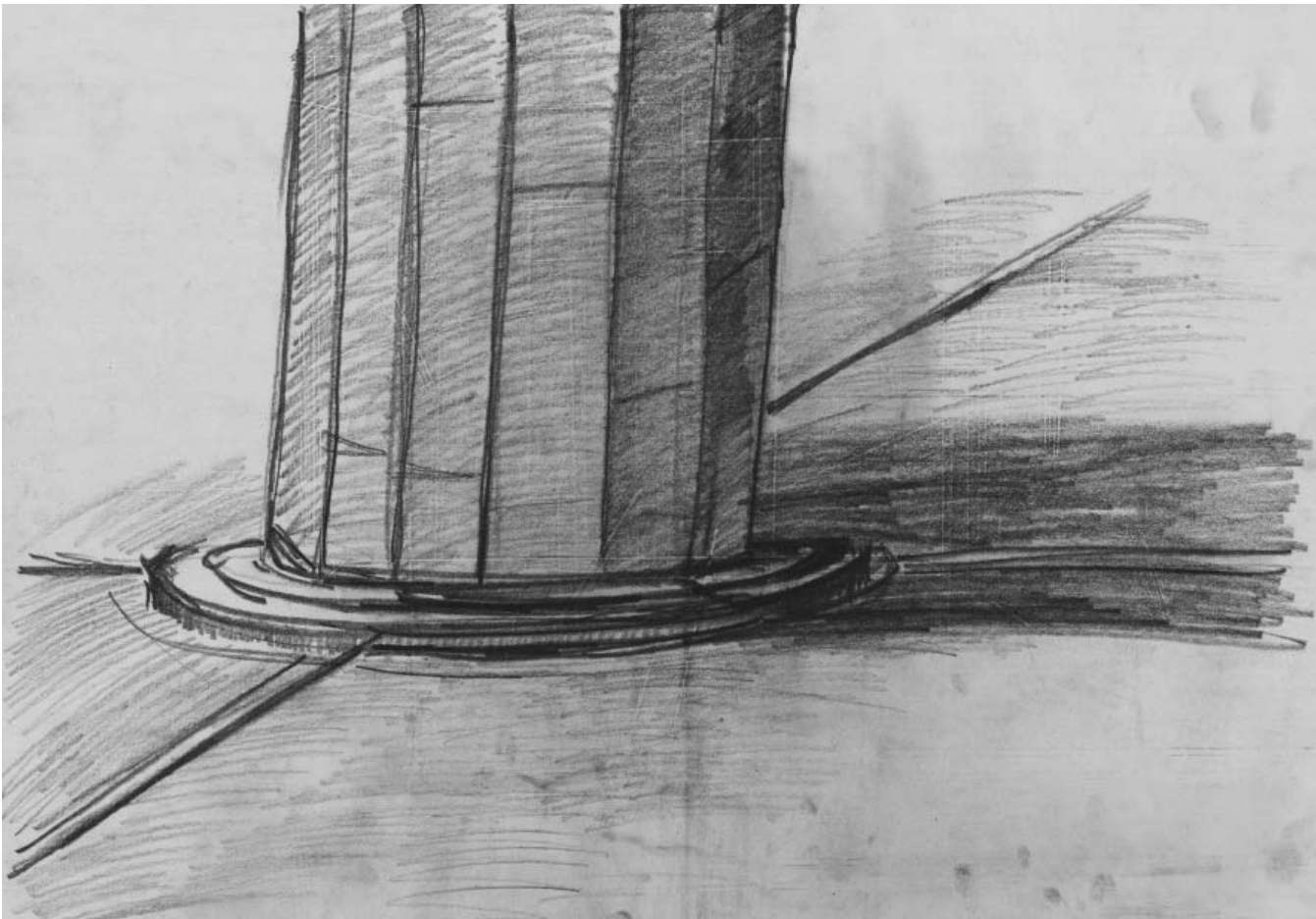


FIGURE 25. Sketch of Column Base. *Pencil*

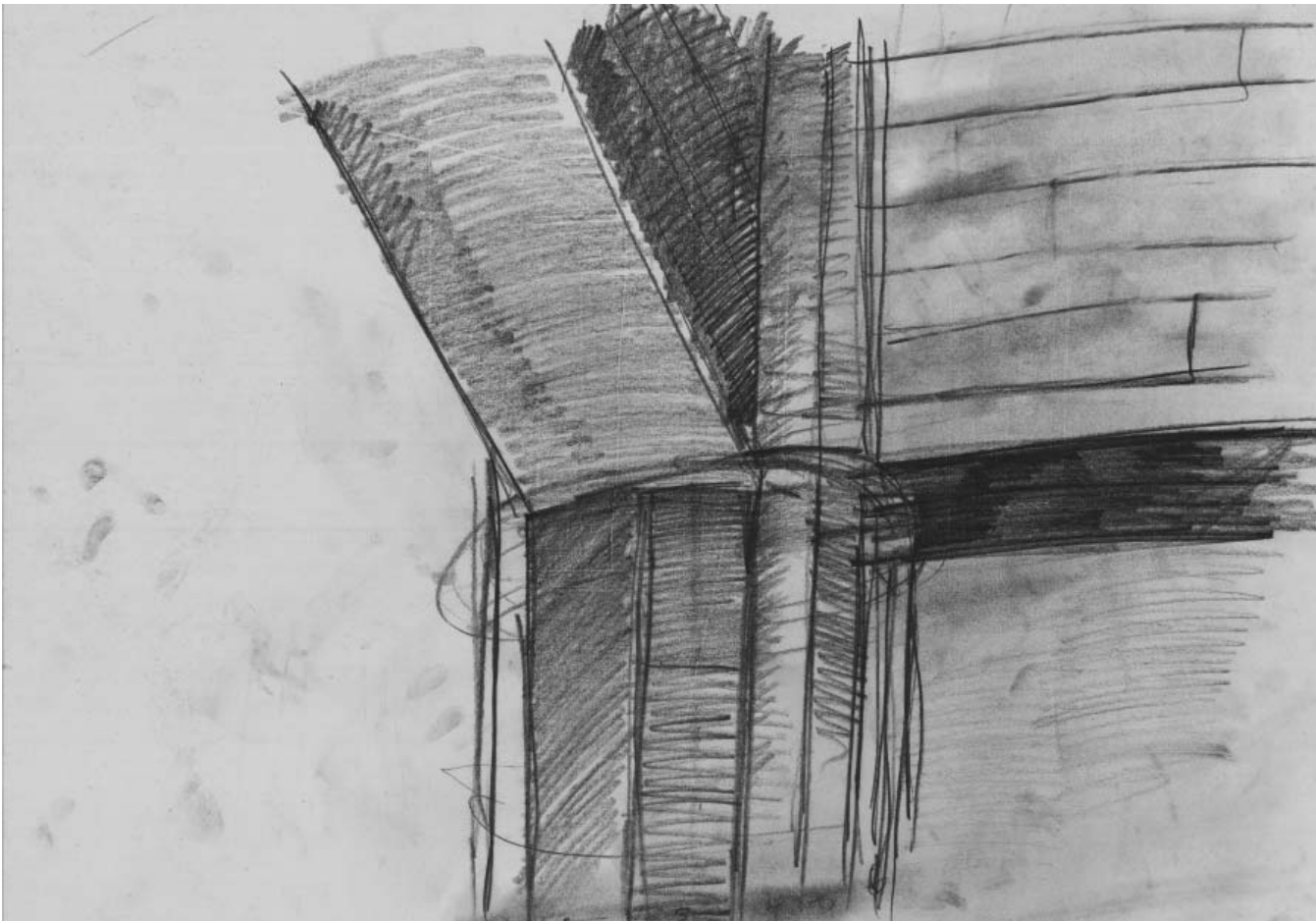


FIGURE 26. Sketch of Relation of Curve Wall and Column Line. *Pencil*

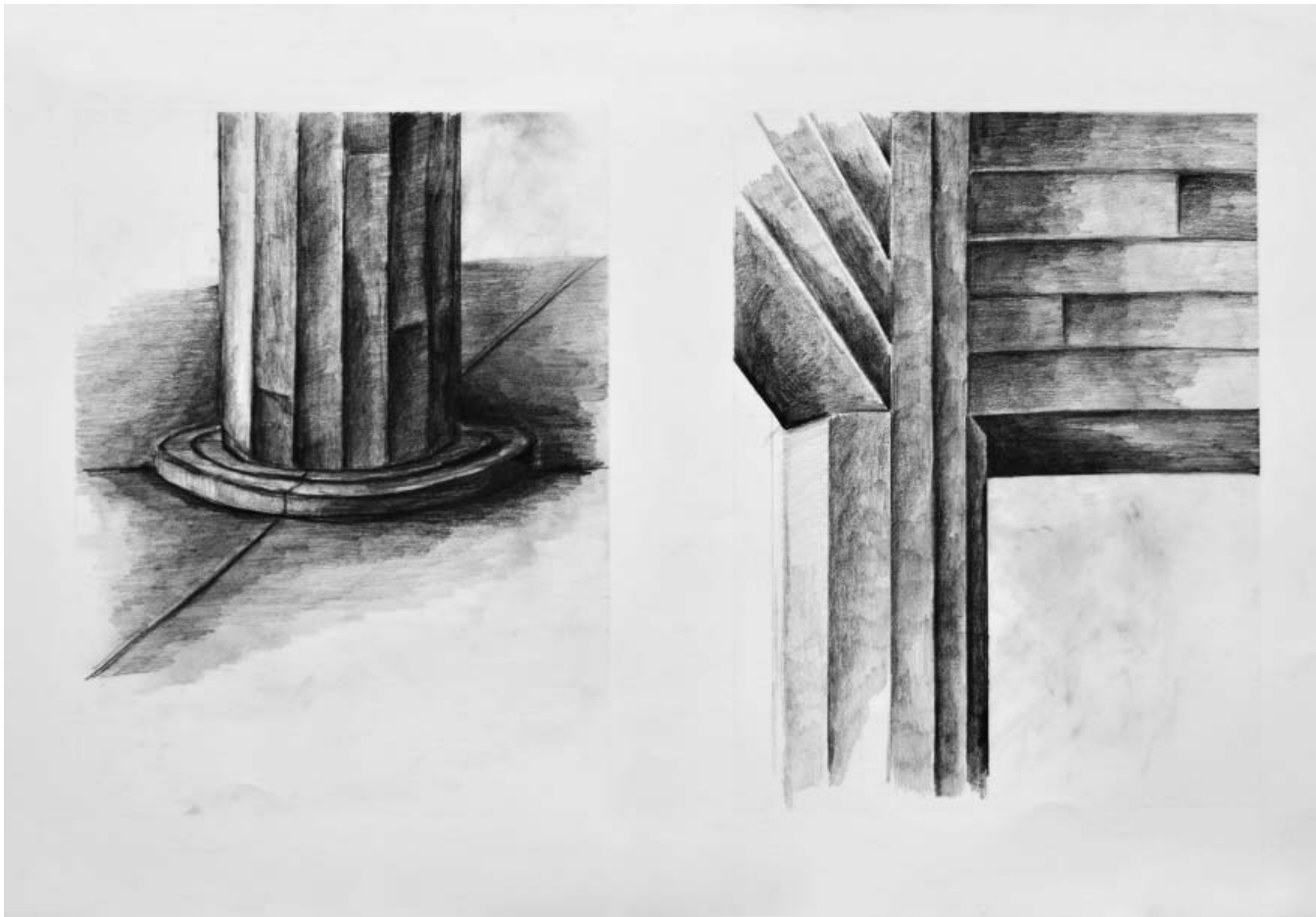


FIGURE 27. Detail of Column. *Pencil*



FIGURE 28. Elevation study at night. *Charcoal*

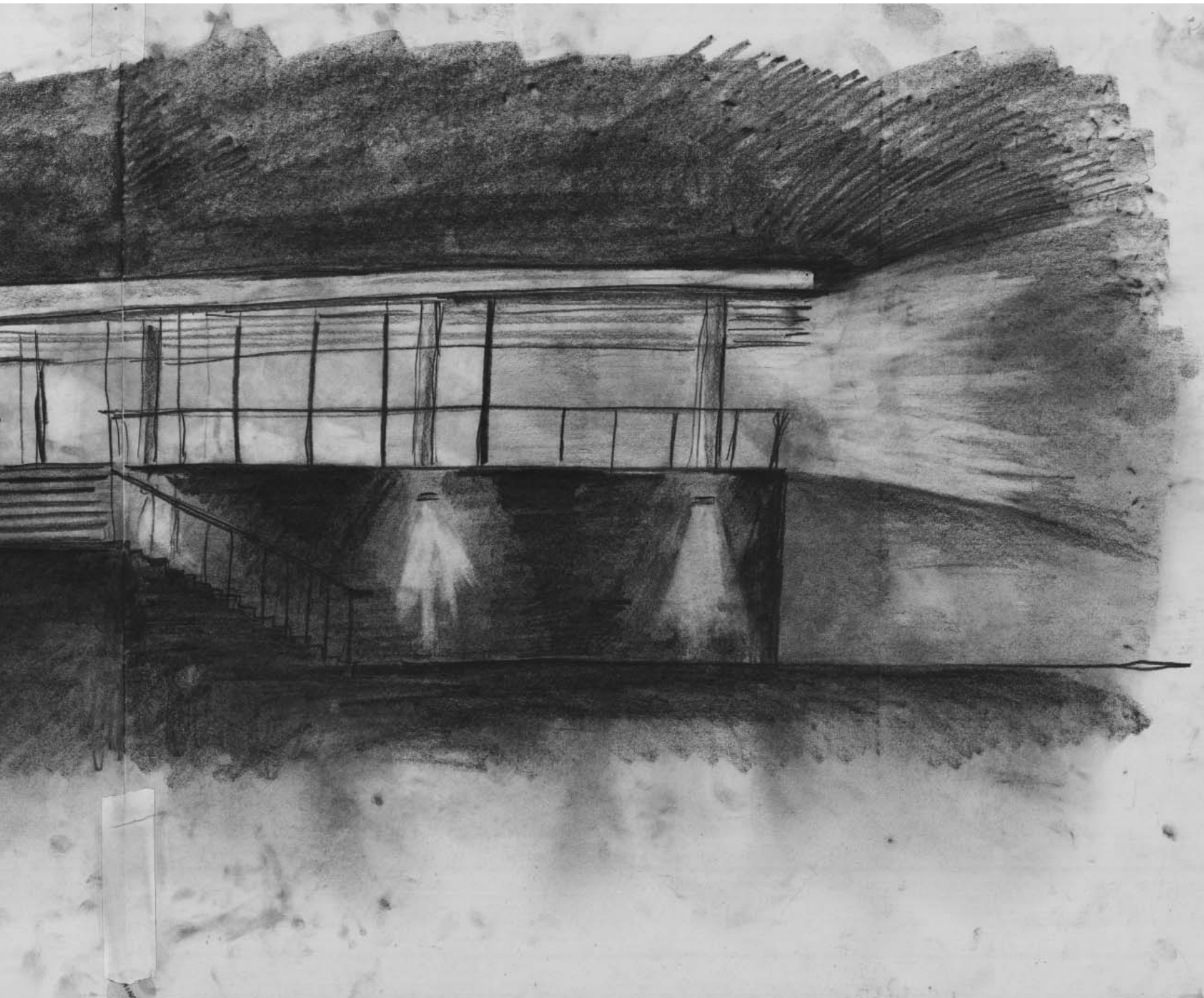
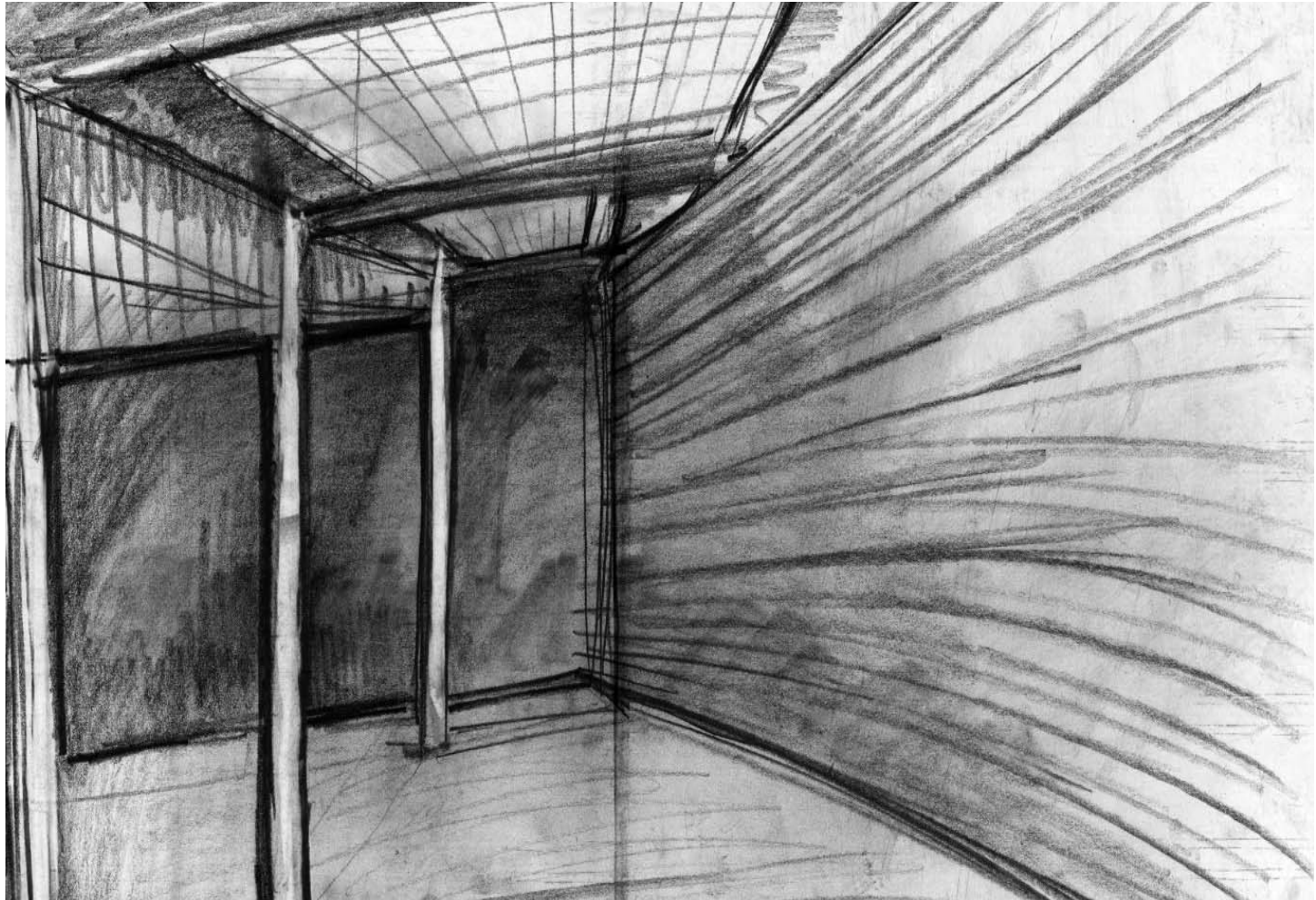


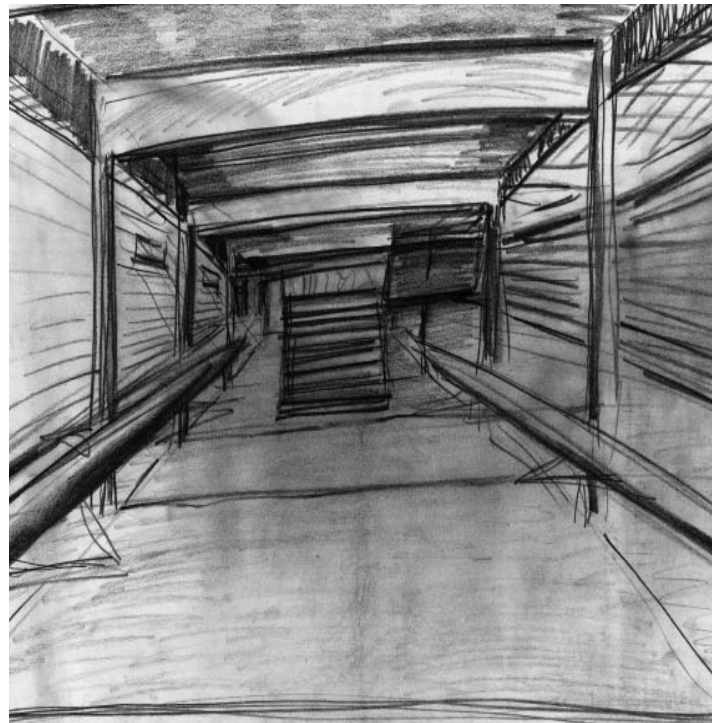
FIGURE 28. Elevation study at night. *Charcoal*



29.



30.

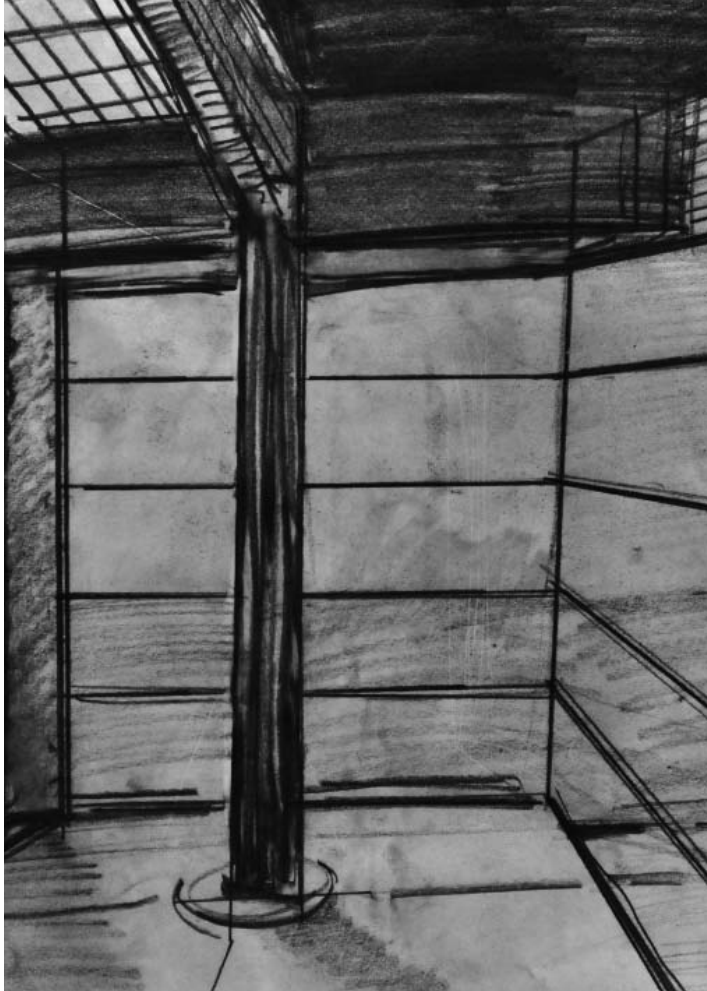


31.

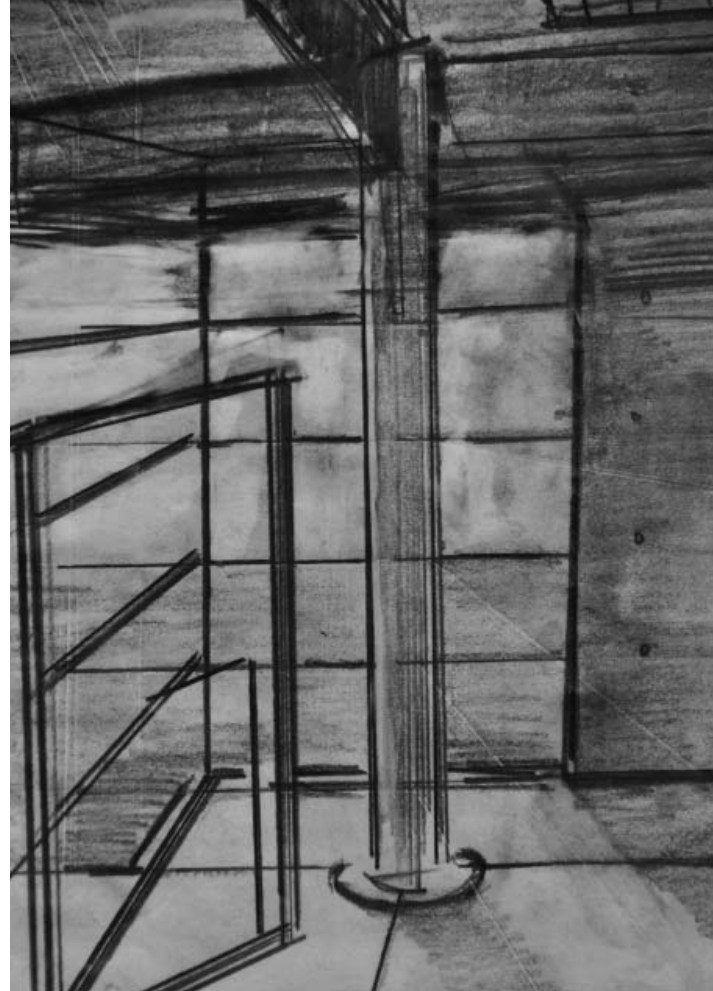
FIGURE 29. Sketch of Relation of Curve Wall and Column Line. *Pencil*

FIGURE 30. Sketch of Lower level with rectangle Stairs. *Pencil*

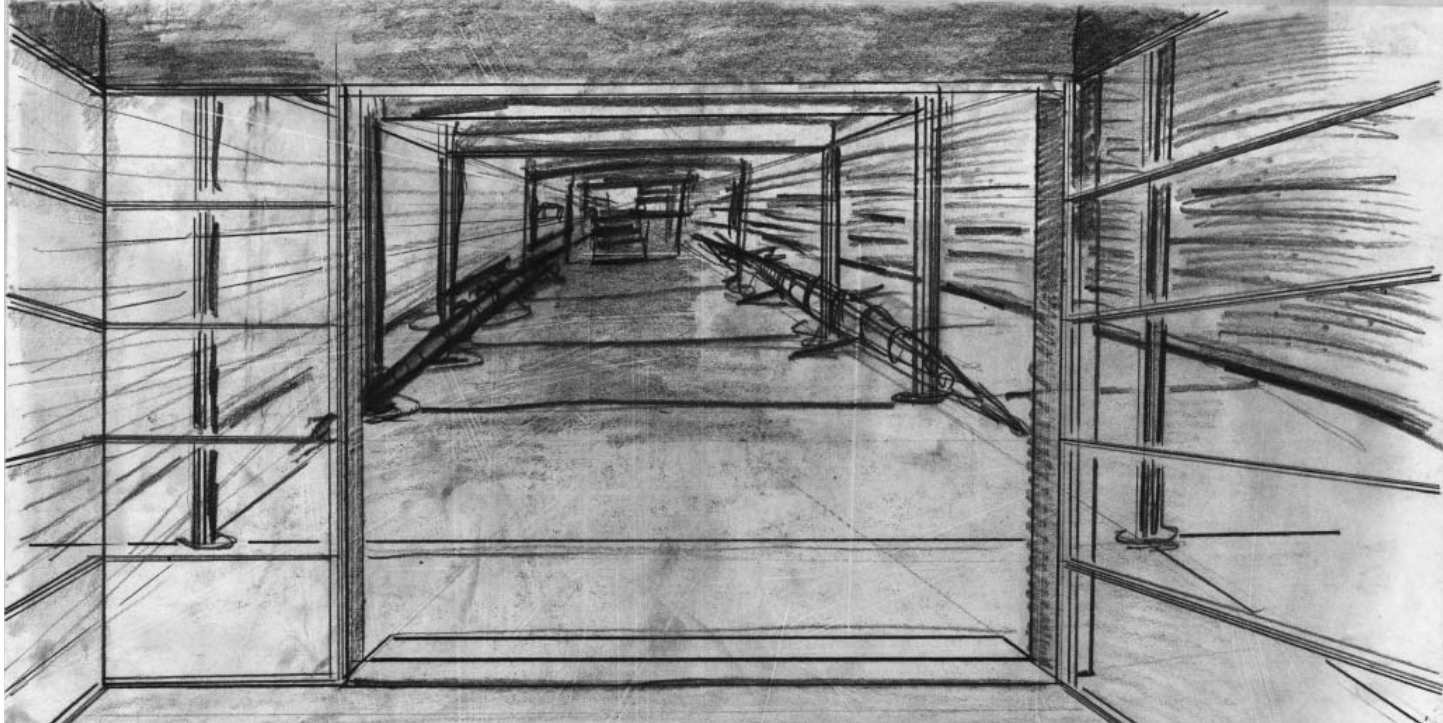
FIGURE 31. Sketch of Lower level with Curved Stairs. *Pencil*



32.



33.



34.

FIGURE 32. Sketch of Lower Level Entrance Condition. *Pencil*

FIGURE 33. Sketch of Lower Level Entrance Condition. *Pencil*

FIGURE 34. Sketch of Lower Level Entrance Condition. *Pencil*

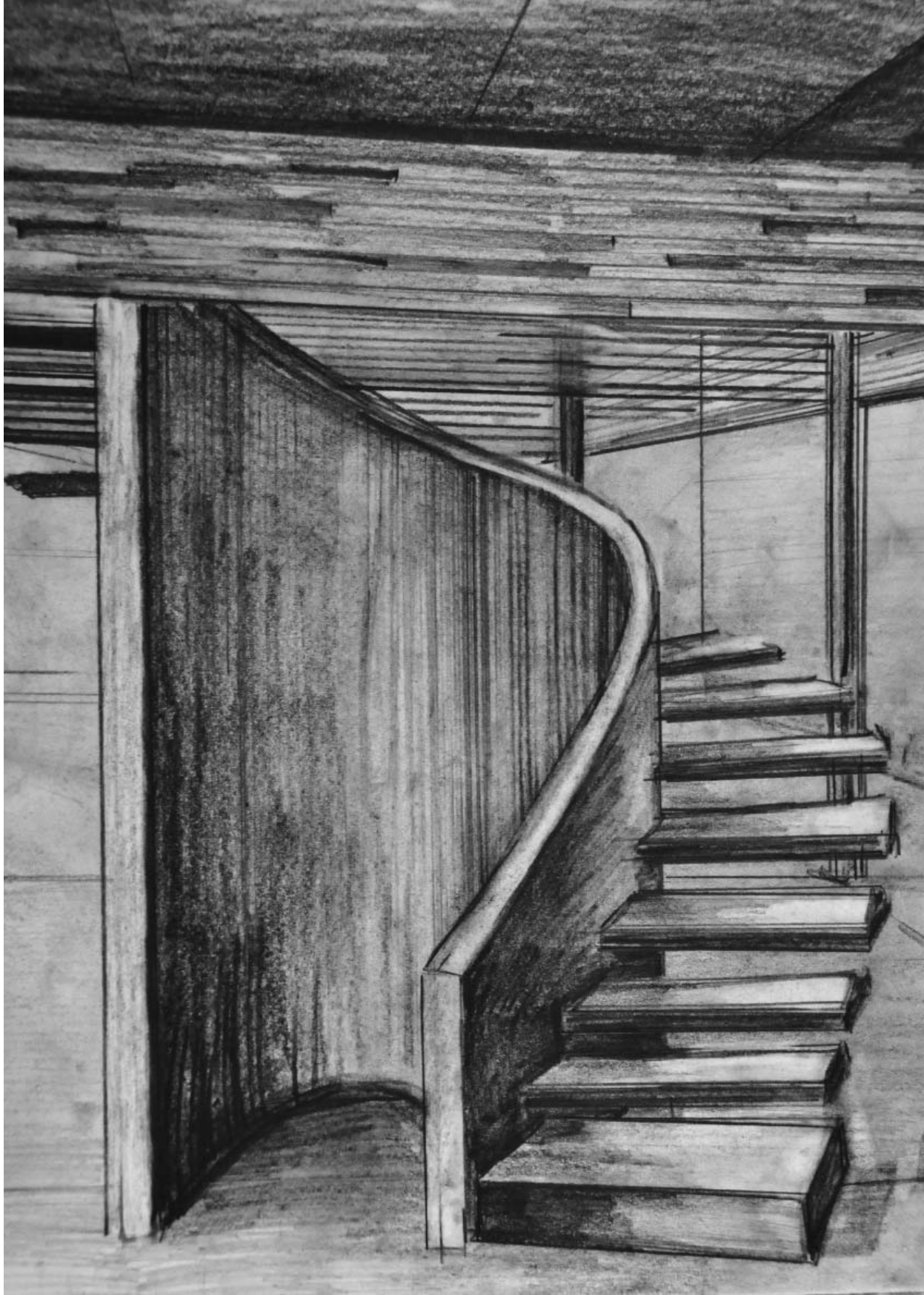


FIGURE 35. Detail of Figure 37. *Pencil*

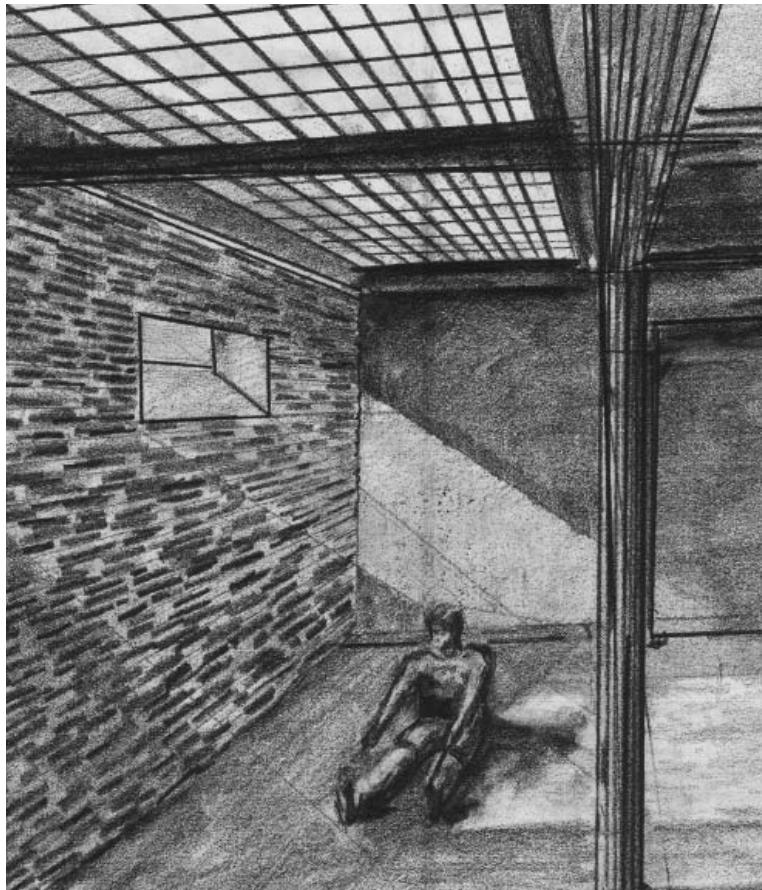
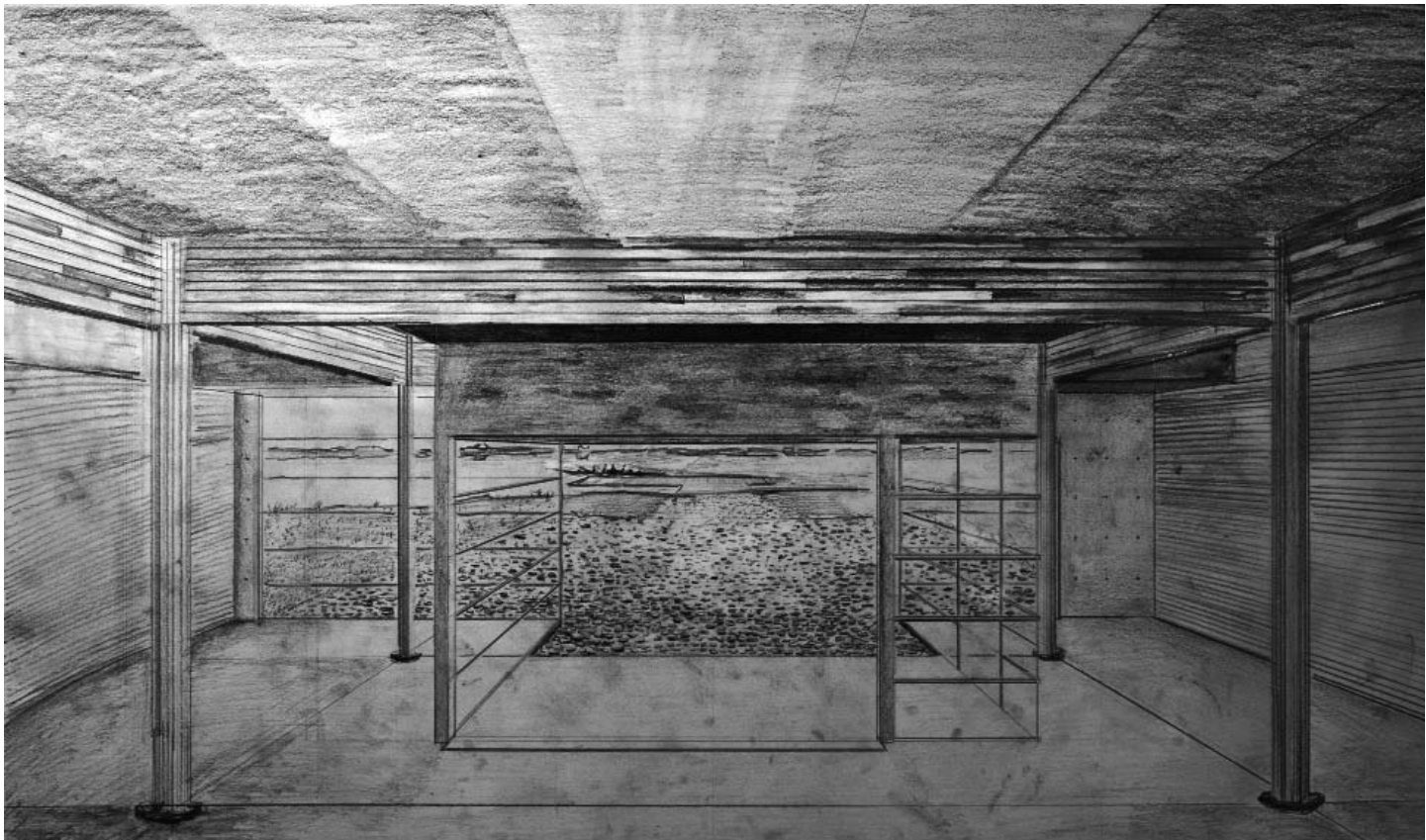


FIGURE 36. Sketch of Interior. *Pencil*



37.



38.

FIGURE 37. Drawing of Lower Level. *Pencil*

FIGURE 38. Drawing of Lower Level. *Pencil*



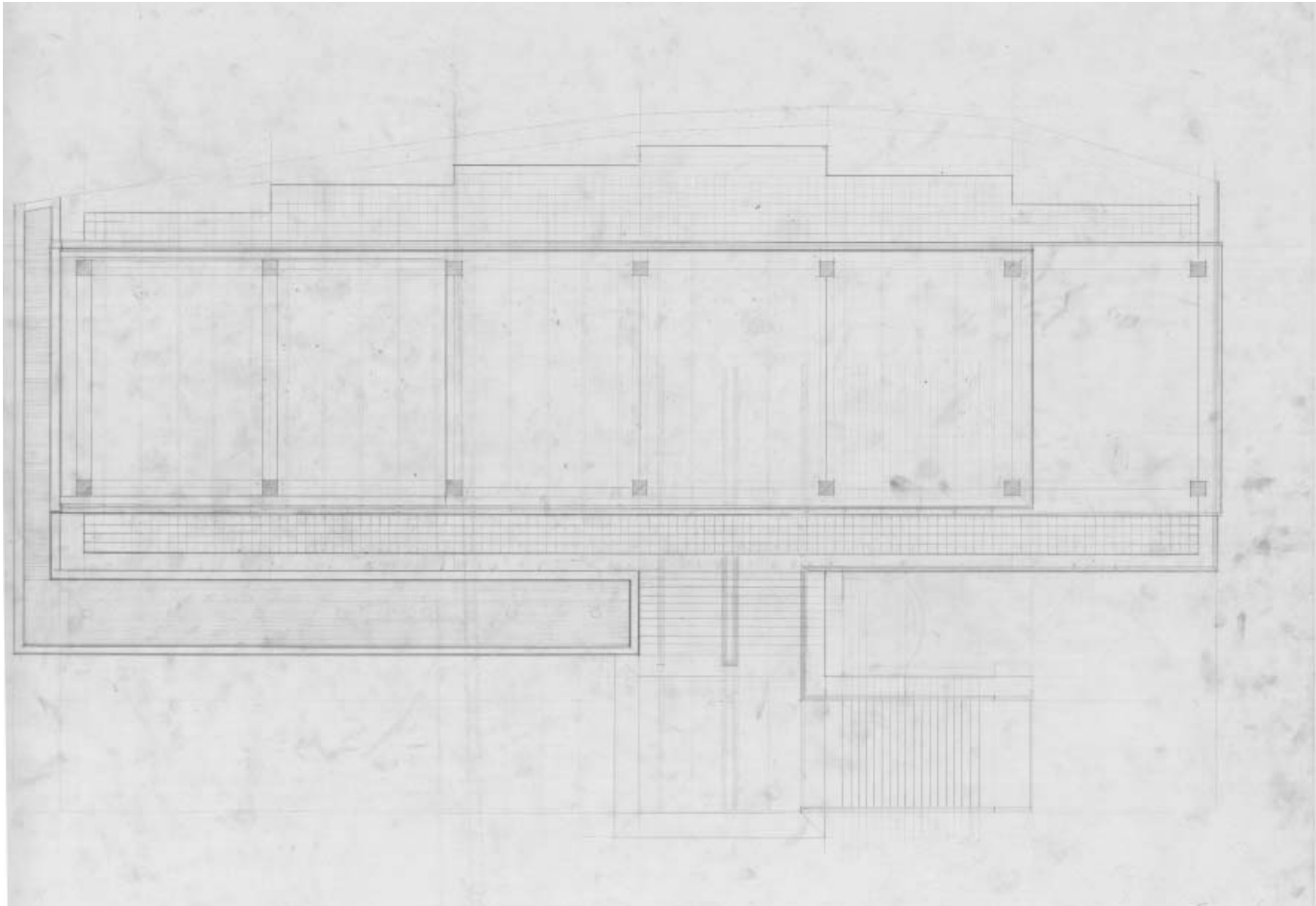
FIGURE 39. Detail of Figure 38. *Pencil*



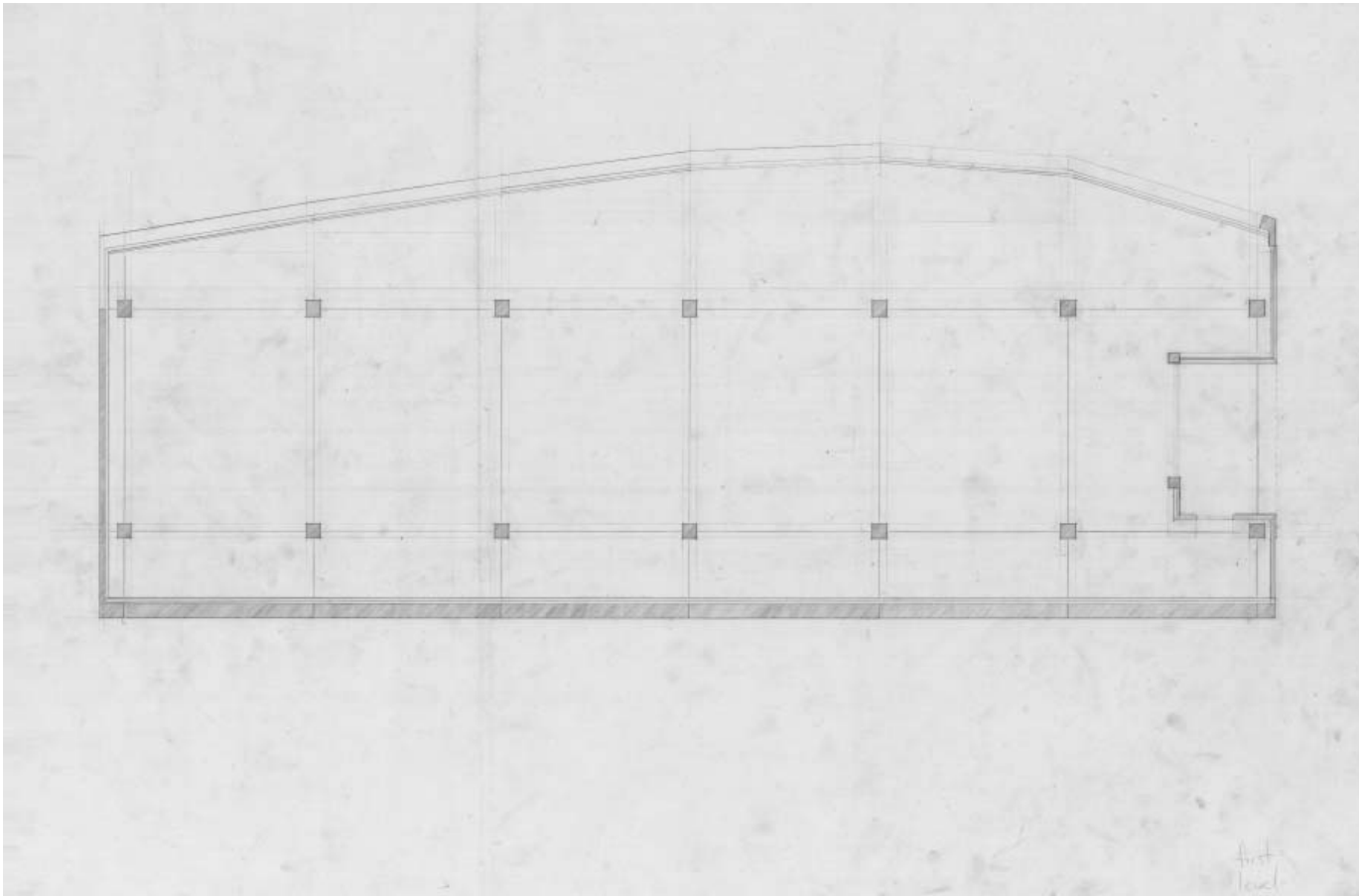
FIGURE 40. Sketch of Lower Level Entrance Condition. *Pencil*



FIGURE 41. Detail of Figure 37. *Pencil*



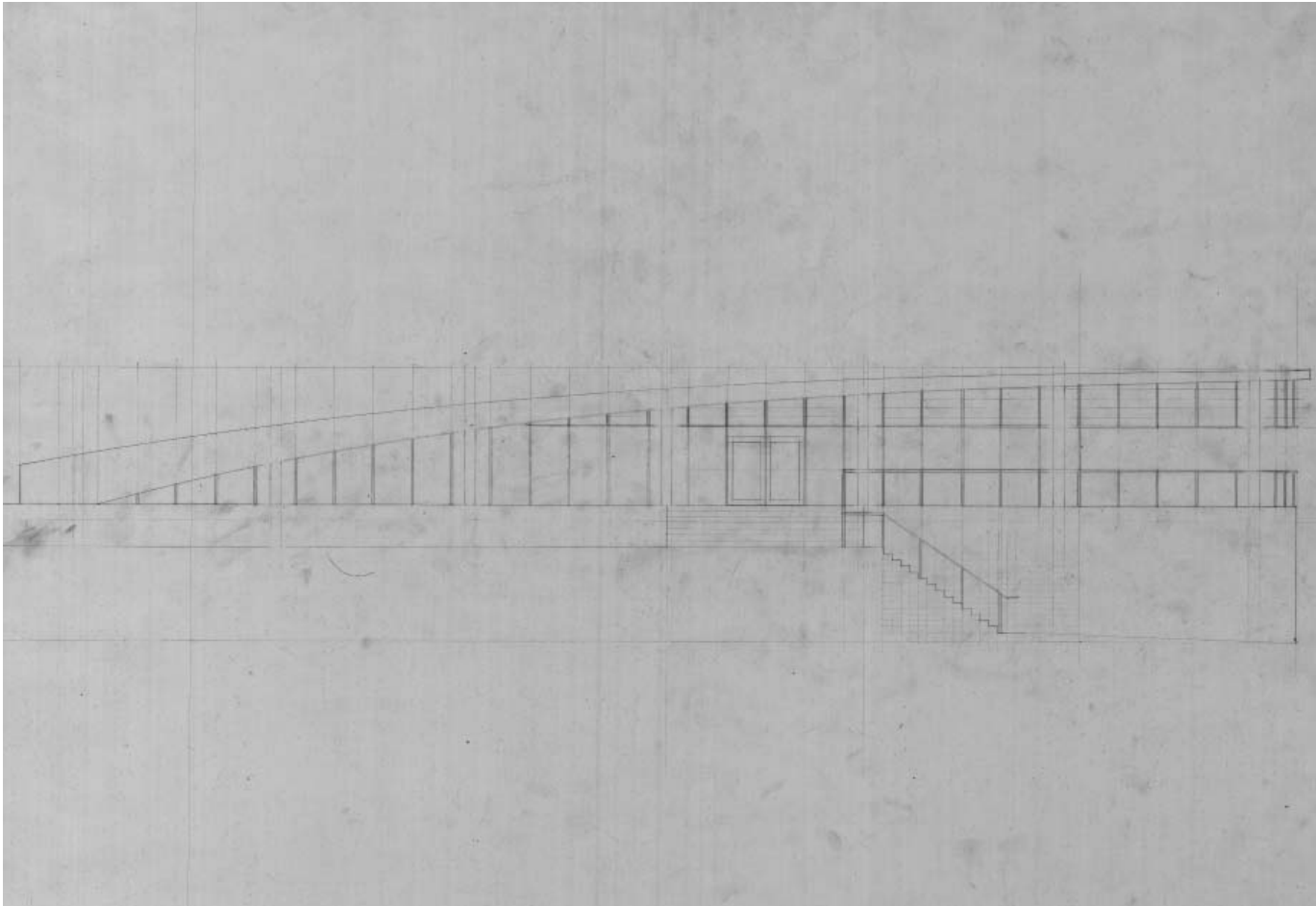
42.



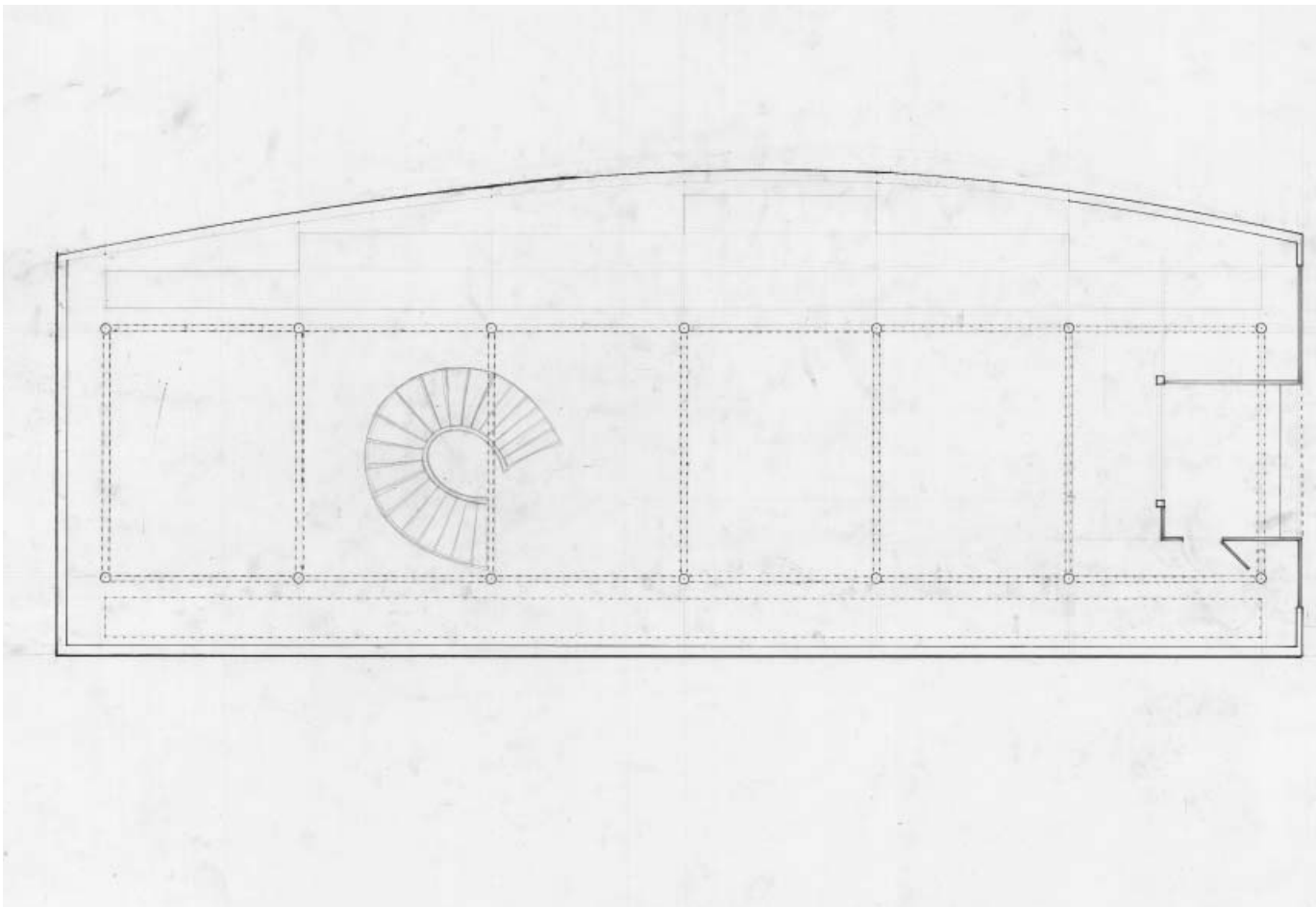
43.

FIGURE 42. Plan of Upper Level. *Pencil on Vellum*

FIGURE 43. Plan of Lower Level. *Pencil on Vellum*



44.



45.

FIGURE 44. Exterior Elevation. *Pencil on Vellum*

FIGURE 45. Plan of Lower Level with stairs. *Pencil on Vellum*



FIGURE 46. Reggio Emilia, Italy, 2011. *Photograph*



FIGURE 47. Siwa Oasis, Egypt, 2010. *Photograph*

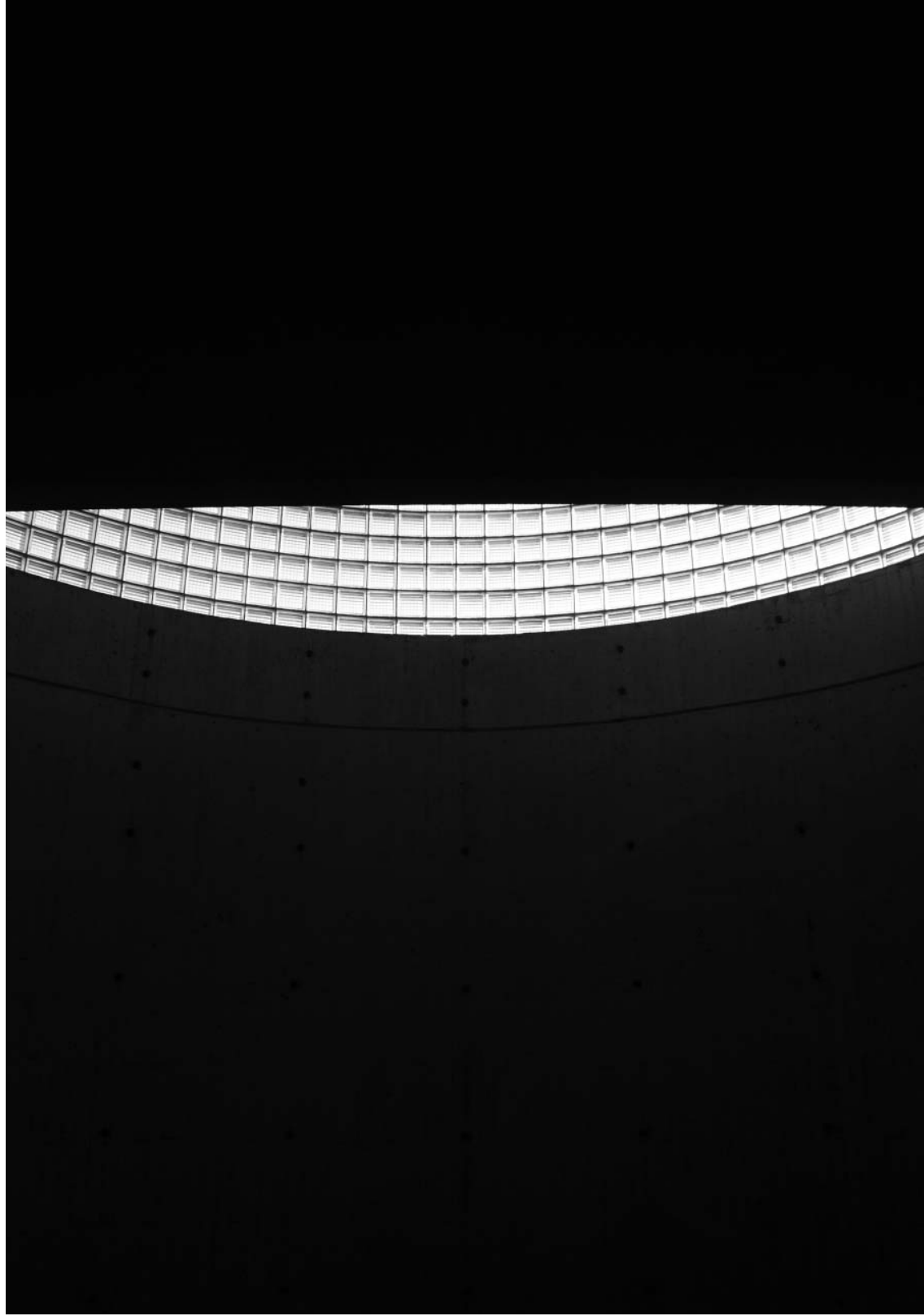


FIGURE 48. New Haven, USA, 2011. *Photograph*



FIGURE 49. Alexandria, Egypt, 2010. *Photograph*



FIGURE 50. Photography Exhibition in Cowgill Hall (August 2012). *Photograph*



FIGURE 51. Idea for a stair. *Charcoal and Conté`*