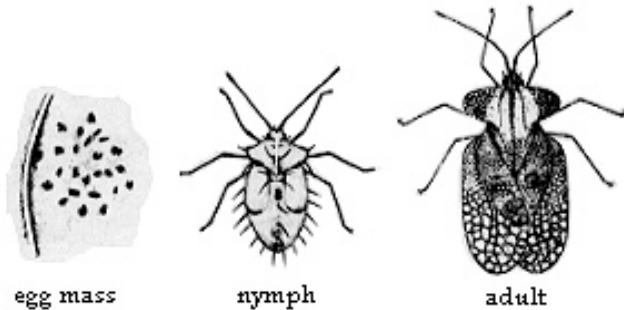


EGGPLANT LACE BUG

By Eric Day and Alexandra Spring



Life stages of the Eggplant Lace bug USDA

DESCRIPTION: Adult: Grayish to dark brown, mottled, flat, with transparent lacelike wings. Length is 1/6 inch long. Nymph is Brown or black, spiny, without lacelike wings. Up to 1/10 inch long.

COMMON HOST PLANT(S): Eggplant, tomato, and potato.

DAMAGE: Adults and nymphs feed in groups on underside of leaves. Leaves turn yellow and brown. Plants usually die.

DISTRIBUTION: Southern United States.

CULTURAL CONTROL: Adults overwinter in garden trash, so a thorough postharvest cleanup will help eliminate possible overwintering sites.

ORGANIC/BIOLOGICAL CONTROL: Natural enemies of lace bugs include lady beetle larvae and adults, spiders, and soldier bugs.

CHEMICAL CONTROL: Treat with a registered insecticide when damage appears; repeat as needed.



Eggplant lace bug. Photo by Debbie Roos, NC Cooperative Extension