

Question Bank

Multiple choice

1. The desire to maintain a safe laboratory environment for all begins with _____?
 - a. prevention
 - b. ubiquity
 - c. microbiology
 - d. accidents

2. When a chemical splashes in the eye rinse for _____?
 - a. 10 seconds
 - b. 30 seconds
 - c. 5 minutes
 - d. 15 minutes

3. Which of the following type(s) of Personal Protective Equipment (PPE) is frequently used?
 - a. Safety glasses
 - b. Lab Coats
 - c. Face Shields
 - d. Gloves
 - e. All of the above

4. Chemical, reagents or broth cultures should be pipetted by _____?
 - a. mouth
 - b. ear
 - c. pipetter
 - d. nose

5. Good work practices include,
 - a. smelling and tasting chemicals
 - b. not washing hands before and after lab
 - c. confining long hair and loose clothing
 - d. using damaged equipment and glassware.

6. What is the name of the procedure performed under sterile conditions to eliminate contamination in hopes to obtain a pure culture of one type of microorganism?
 - a. sterilization technique
 - b. aseptic technique
 - c. disinfectant technique
 - b. pathogen technique

7. After a biohazard spill is covered with paper towels and disinfectant solution, it must sit for _____ minutes?

- a. 5
- b. 30
- c. 60
- d. 20

8. _____ is needed as a source of nutrient for the growth and reproduction of microbes.

- a. pathogens
- b. bacteria
- c. reagents
- d. media

9. To prevent the contamination of microscopes and surrounding areas disinfect/clean used slides, prepared by student, with

- a. 70% ethanol and lens paper
- b. 5% methylene blue and lens paper
- b. acetone and lens paper
- d. water and lens paper

True/False

1. Virulent strains of microorganisms are used in your laboratory?
2. You should always wash your hands before and after lab.
3. Food and drinks are allowed in the lab.
4. Lab coats must be taken off when exiting the lab and entering a non-laboratory area.
5. Good Laboratory Practice (GLP) is a method employed in a laboratory setting to prevent contamination, accidents and injuries.

6. Following Good Laboratory Practices should only be used when your instructor reminds the class to do so.

7. Cell phones can be used in lab if the instructor is not talking.

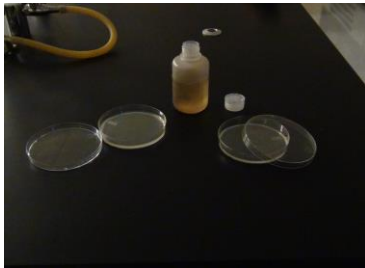
8. Students must know the location of all safety equipment.

9. It is good practice to carry the microscope with one hand.

Short Answer

1. What are the 3 most common ways accidents or incidents occur in the laboratory?

2. Identify **one** safety violation in the picture.

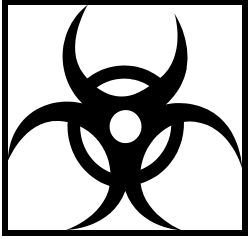


3. What type of solution(s) should be used to disinfect a bench top before and after lab?

4. The sign below indicates what type of safety hazard?



5. The sign below indicates what type of safety hazard?



6. Identify **one** safety violation in the picture.



Question Bank Answers

Multiple Choice

1. a
2. d
3. e
4. c
5. c
6. b
7. b
8. d
9. a

True/False

1. false
2. true
3. false
4. true
5. true
6. false
7. false
8. true
9. false

Short Answer

1. Inappropriate use of chemicals and equipment, Inexperienced students or workers, Inappropriate behavior or conduct
2. Petri dish and chemical bottle left open
3. Bleach and/or ethanol
4. Toxic chemical
5. Biohazard
6. Unorganized work area

