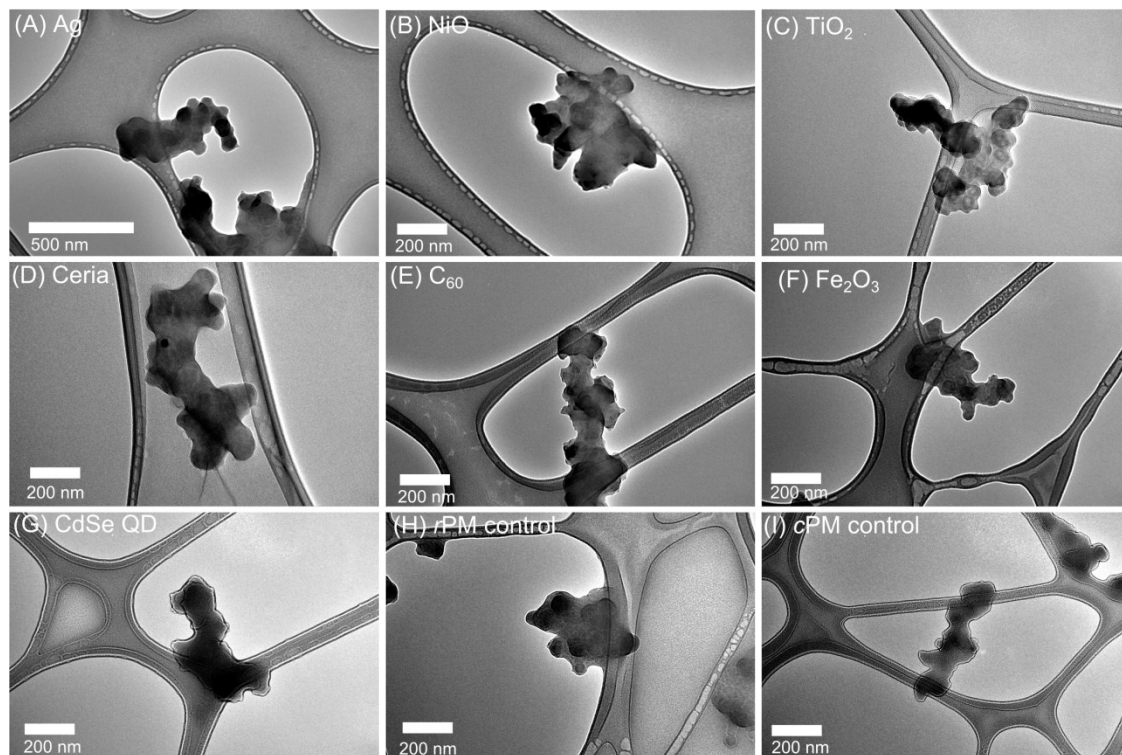


## SUPPLEMENTARY INFORMATION

### Toxicity of Particulate Matter from Incineration of Nanowaste

Eric P. Vejerano, Yanjun Ma, Amara L. Holder,  
Amy Pruden, Subbiah Elankumaran, and Linsey C. Marr<sup>a</sup>

Civil and Environmental Engineering Department, Virginia Tech  
411 Durham Hall, Blacksburg, VA 24061, <sup>a</sup>Corresponding author,  
Fax: 540 231 7916; Tel: 540 231 6071; e-mail: [lmarr@vt.edu](mailto:lmarr@vt.edu).



**Fig. S1** Representative TEM images of PM emitted from incineration of waste containing 1 wt% of (A) Ag, (B) NiO, (C) TiO<sub>2</sub>, (D) ceria, (E) C<sub>60</sub>, and (F) CdSe QD. Images H and I are the rPM and cPM controls.

---

**Table S1.** Metal/metalloid content in PM from the incineration of surrogate waste

Metal	Concentration ( $\mu\text{g/g PM}$ )
Fe	19.6 $\pm$ 2.3
Si	14.5 $\pm$ 7.0
Cr	4.20 $\pm$ 3.1
Sn	3.87 $\pm$ 4.1
Zn	3.48 $\pm$ 1.5
Al	2.34 $\pm$ 0.31
Ni	1.99 $\pm$ 0.55
Cu	1.72 $\pm$ 1.39
Pb	1.43 $\pm$ 0.78
Mo	0.442 $\pm$ 0.25
Mn	0.238 $\pm$ 0.13
Cd	0.173 $\pm$ 0.077
Co	0.0888 $\pm$ 0.0056
V	0.0493 $\pm$ 0.021
As	0.00567 $\pm$ 0.00167