

# EIGHT HOUSES IN A ROW

by Joseph M. Hyland

Thesis submitted to the faculty of the Virginia  
Polytechnic Institute and State University in partial  
fulfillment of the requirements for the degree of

MASTER OF ARCHITECTURE

Approved:

Hans ~~/~~ Rott: Chairman

O.C. Ferrari

Dennis Kilper

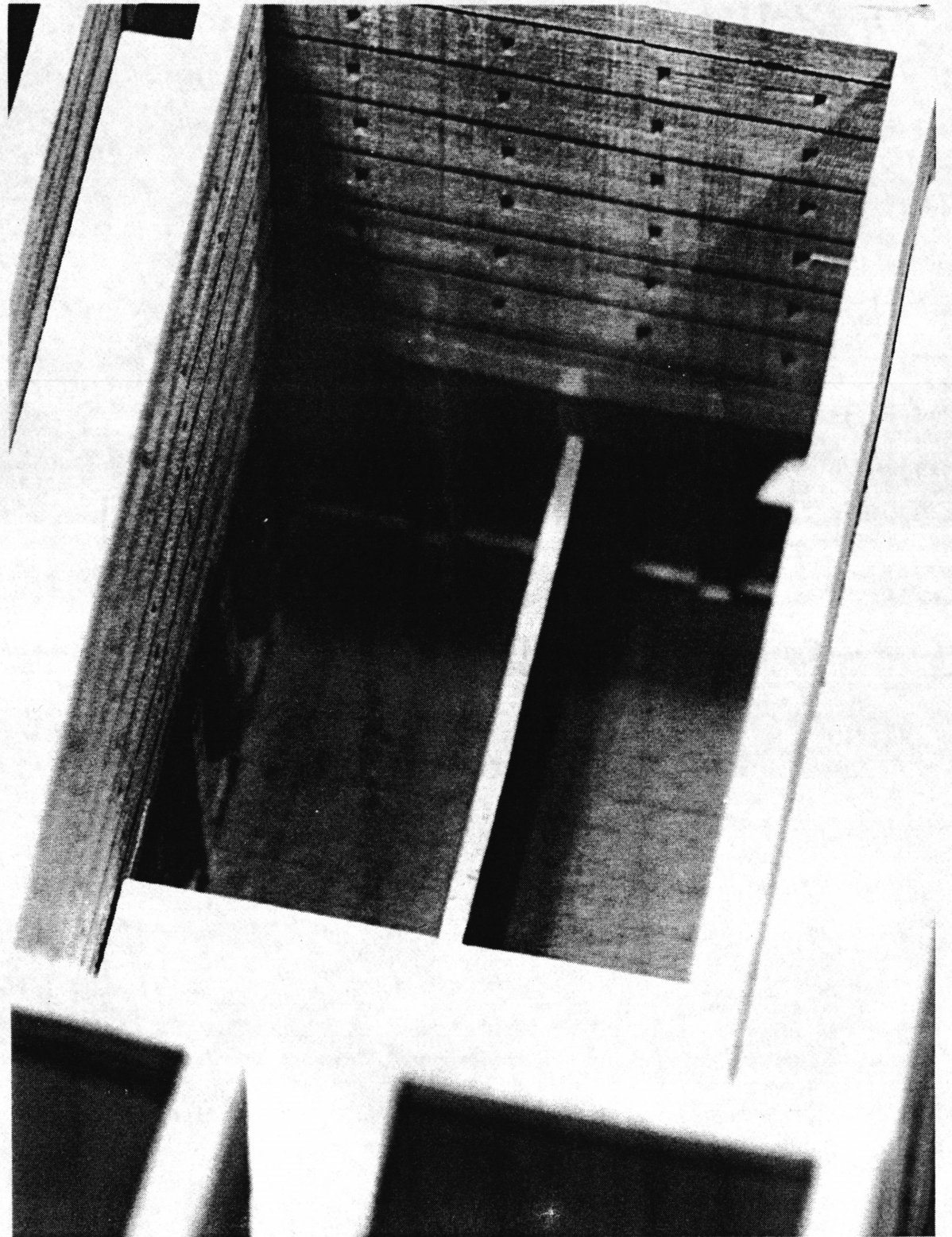
Blacksburg, VA

May, 1988

Abstract

## EIGHT HOUSES IN A ROW

This thesis presents a place for the individual within the contemporary city: Eight houses in a row that restore the solid perimeter blocks of the city while preserving the individual's interior freedom and inalienable solitude.



## Acknowledgements

For my parents whose support and patience made it possible.

CHIEFTAIN BOND  
55% COTTON FIBER

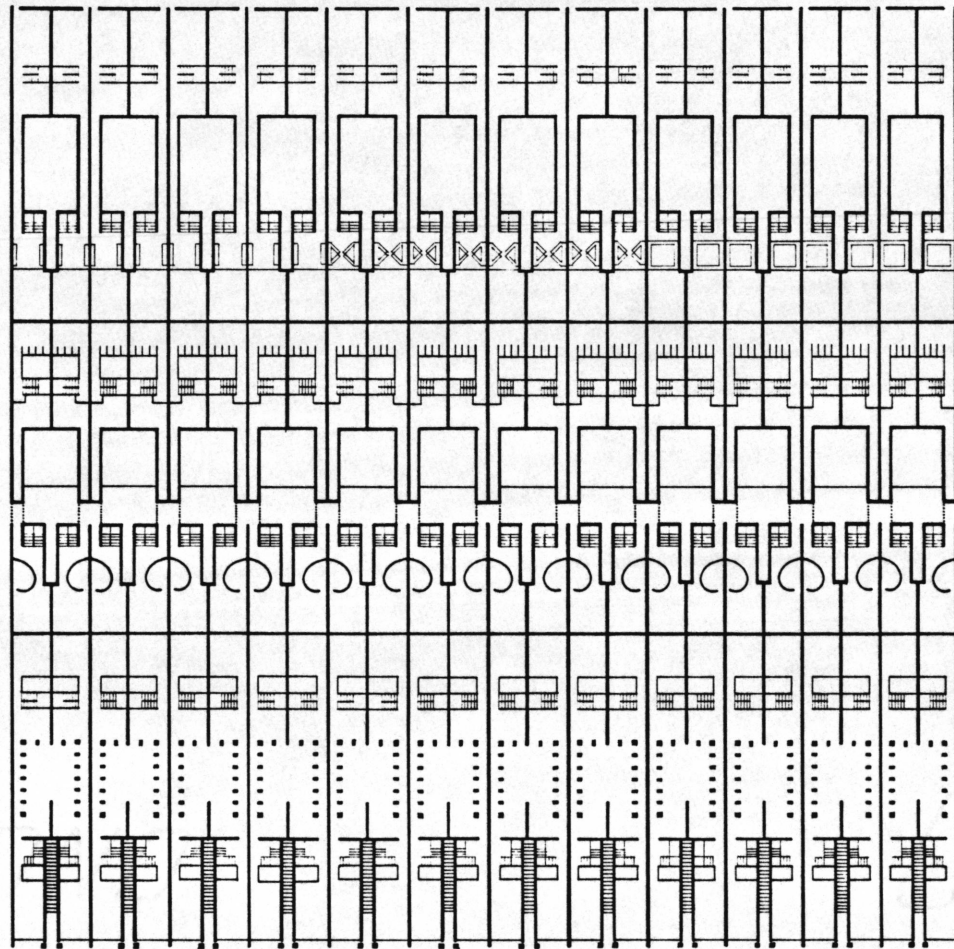
CHIEFTAIN BOND  
50% COTTON FIBER

# Table of Contents

Abstract .....	ii
Acknowledgements .....	iii
The Proposal .....	2
Selected Bibliography .....	17
Vita .....	18

*CHEFTAIN BOND*  
50% COTTON FIBER

*CHEFTAIN BOND*  
50% COTTON FIBER



HEFTAIN BO  
50% COTTON FIBER

HEFTAIN BO  
30% COTTON FIBER

## The Project: EIGHT HOUSES IN A ROW

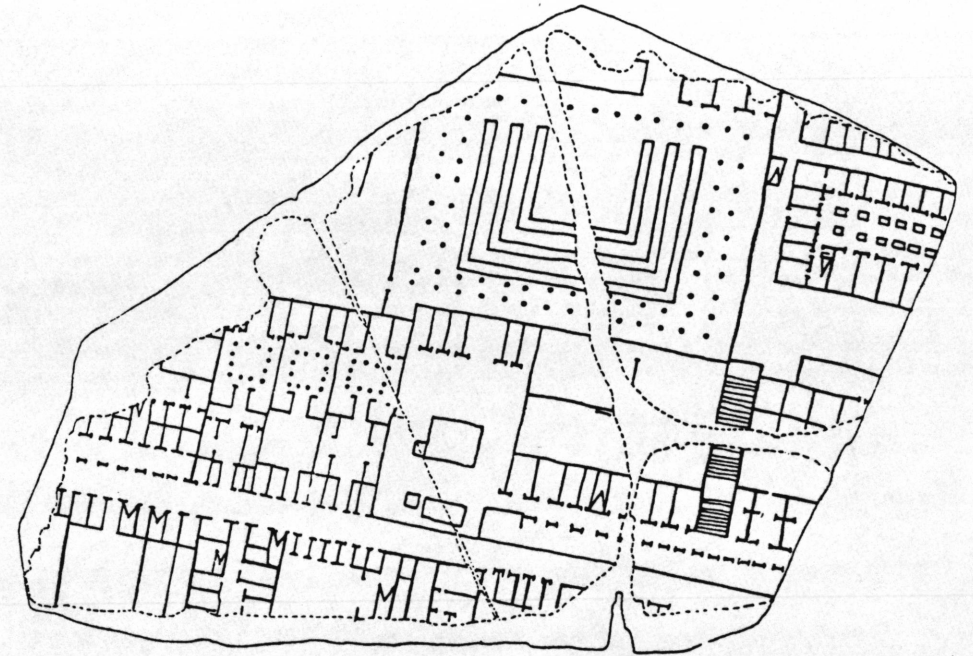
The modern age has witnessed the dissolution of the city's formal structure and its role as societal center and symbol of civic or national identity. Concurrently a greater externalization of life has been brought about by the collectivized man of our current popular culture. The activities, habits and thoughts of the individual are subsequently affected by the role of the masses. The intent of the thesis is twofold. First, to provide an introspective dwelling for the individual consciousness within the city and secondly to reinstate the city's traditional fabric of solid perimeter blocks separated by outdoor public rooms.

The eight row houses occupy a site of one hundred feet square and are to be understood as a fragment to be inserted into gaps within the perimeter blocks. The front wall defines the boundary between the private realm of the individual and the public life of the street. Four portals lead to a dark passage of stairs ascending to a well lighted interior courtyard and pedestrian street one level above the public street. The individual house is entered from this pedestrian street.

The house is two three story blocks with a courtyard between, linked by an arcade on the ground level and an outdoor walkway on the second floor level. A stair tower is in each block which permits a cyclic movement through the house that is pierced by the linear movement of the pedestrian street.

The individual house does not define an exterior space. It is only when it is paired with its mirror image or a row of houses that the public spaces of stair passage, courtyard and pedestrian street come into being.

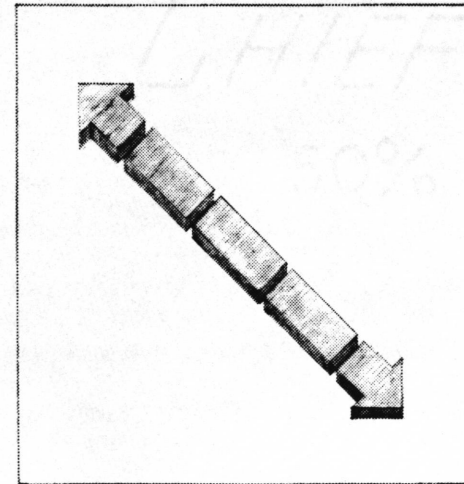
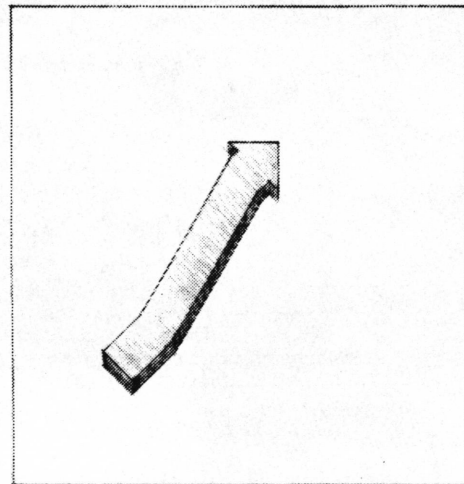
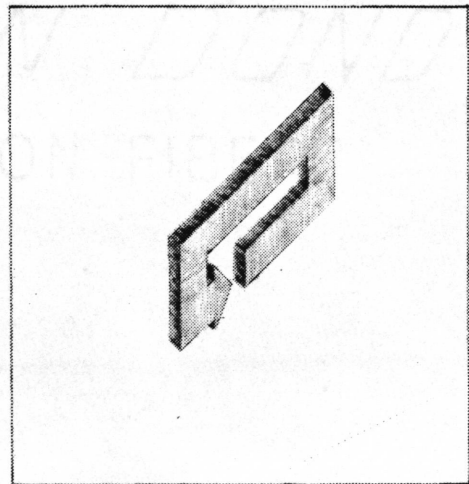
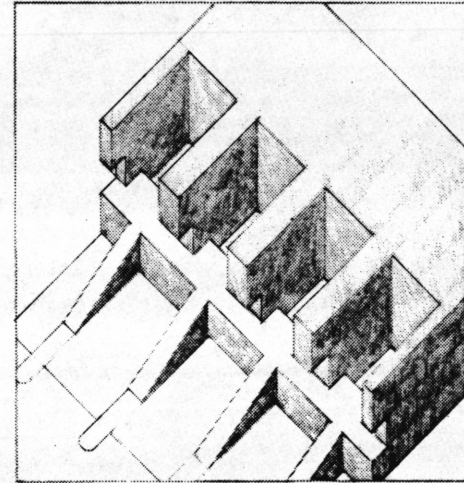
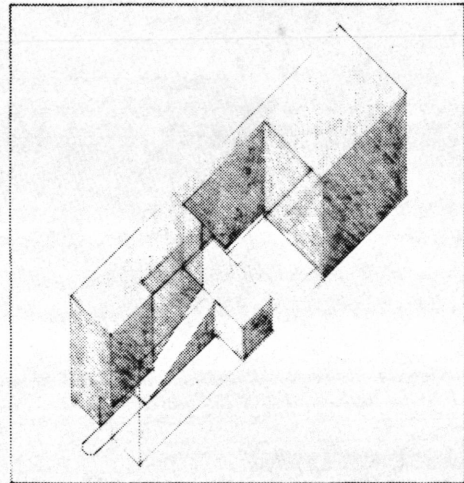
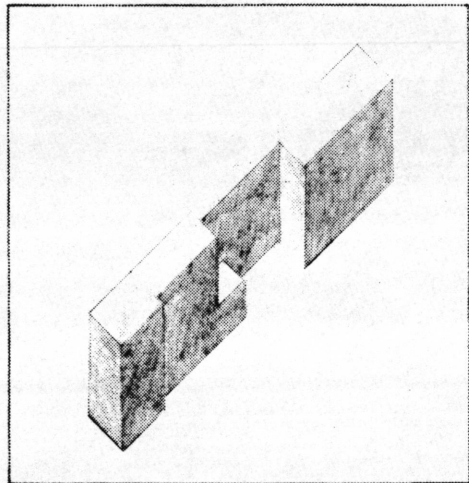
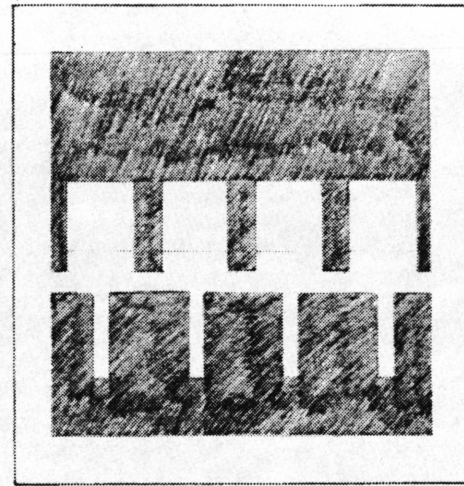
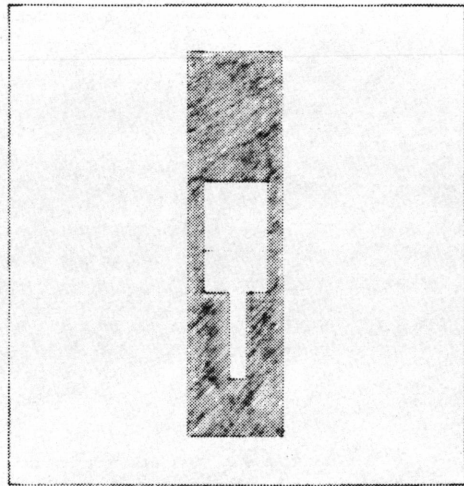
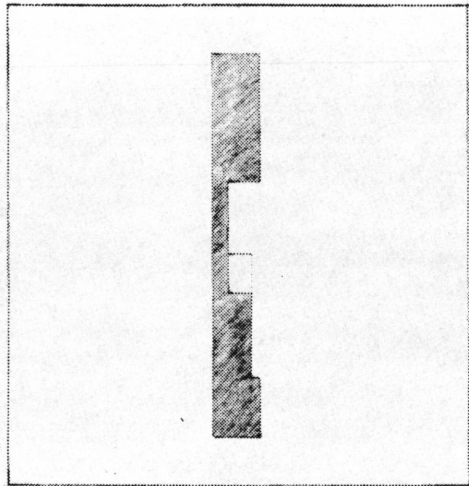
The row of garages on the ground level responds to the current dependency on the automobile in the city. The dissolution of the city's urbanity makes it necessary to drive to work and stores which were previously within a short commute by foot or public transportation from one's home. With the reintroduction of housing there will be a need for shops, markets and places of commerce within the rebuilt neighborhoods. This reurbanization of the city will make the automobile less of a necessity and ultimately obsolete. By allowing the garages to be converted to these shops and markets the street will have its public life returned.

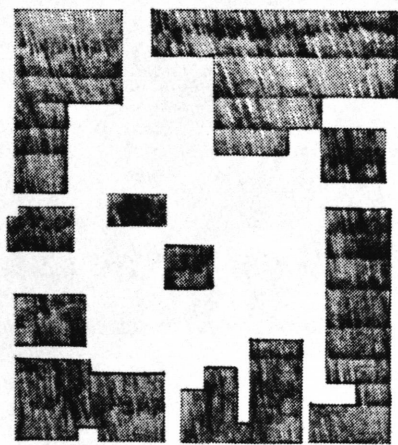
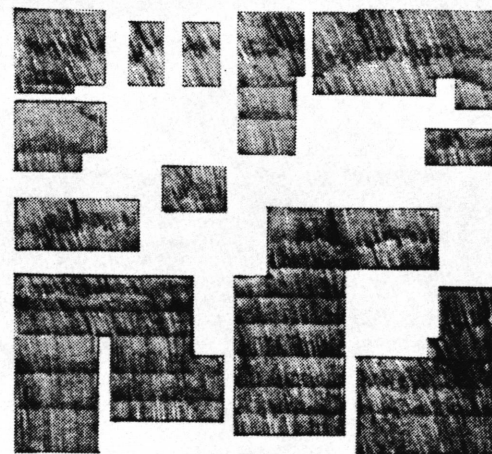
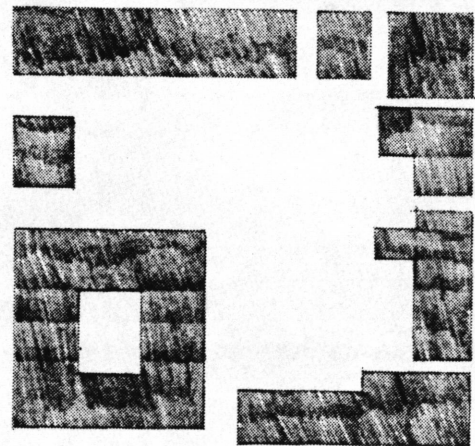
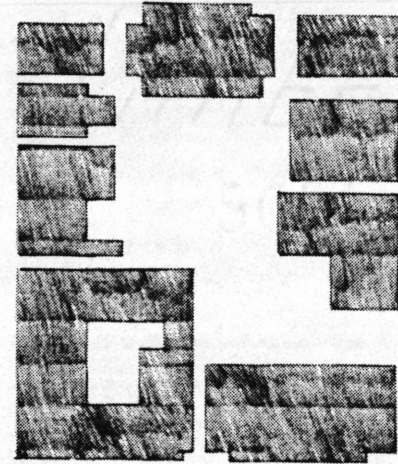
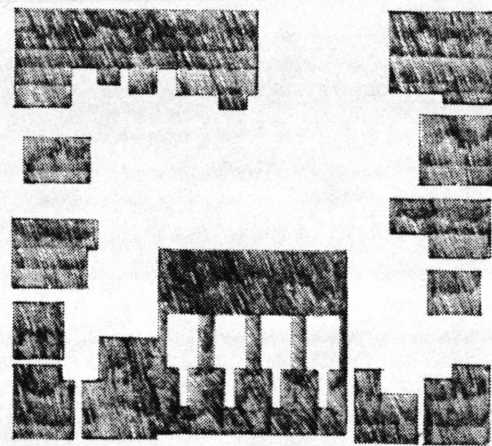
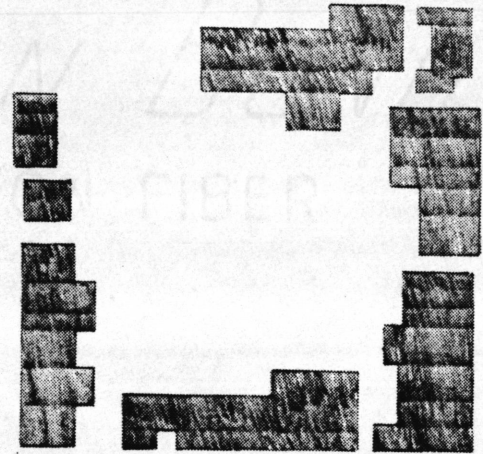
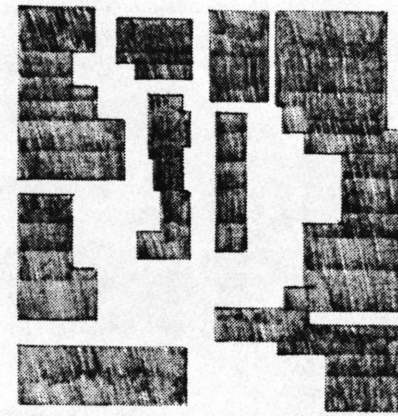
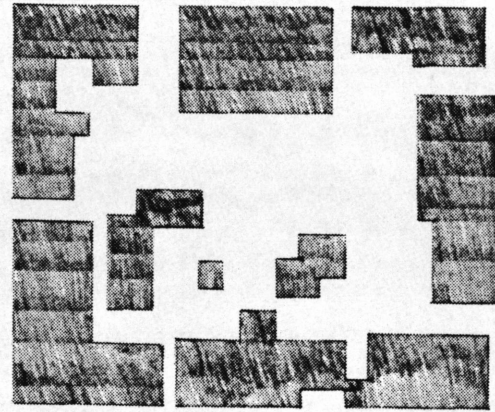
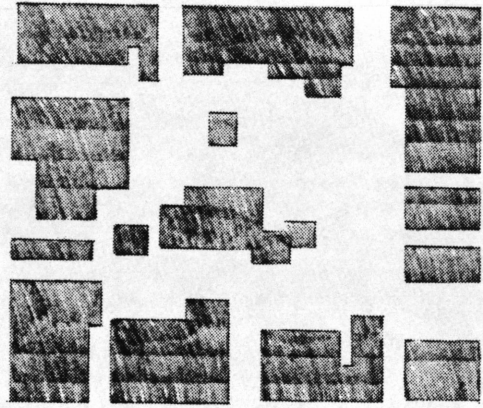


three Roman domus



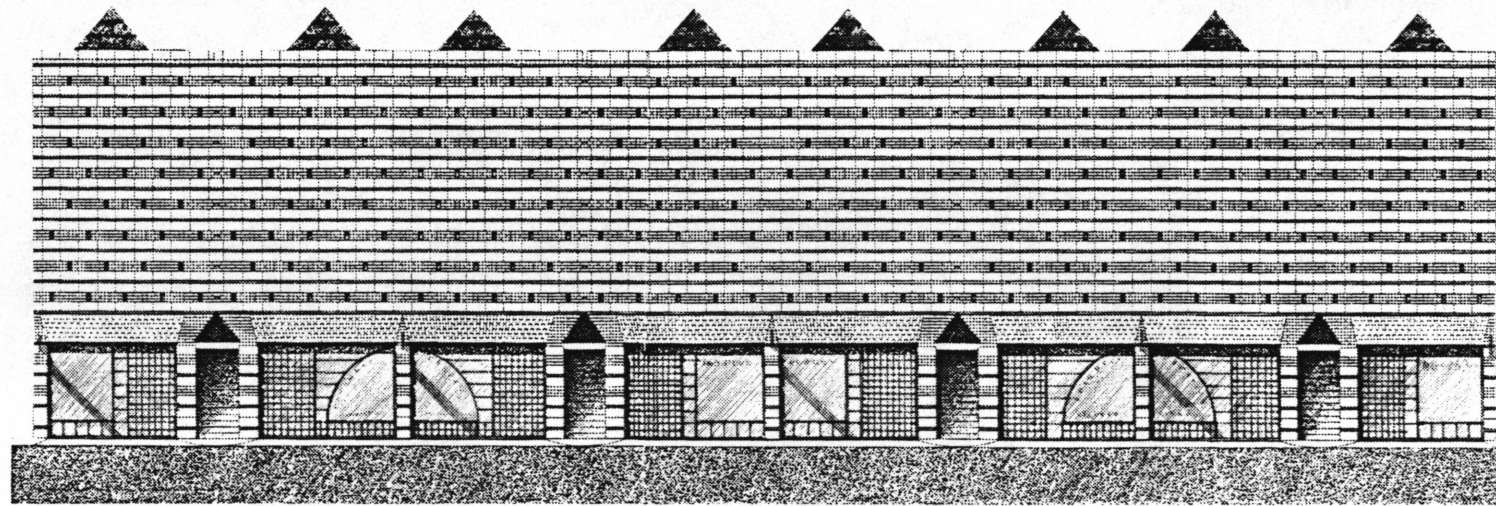
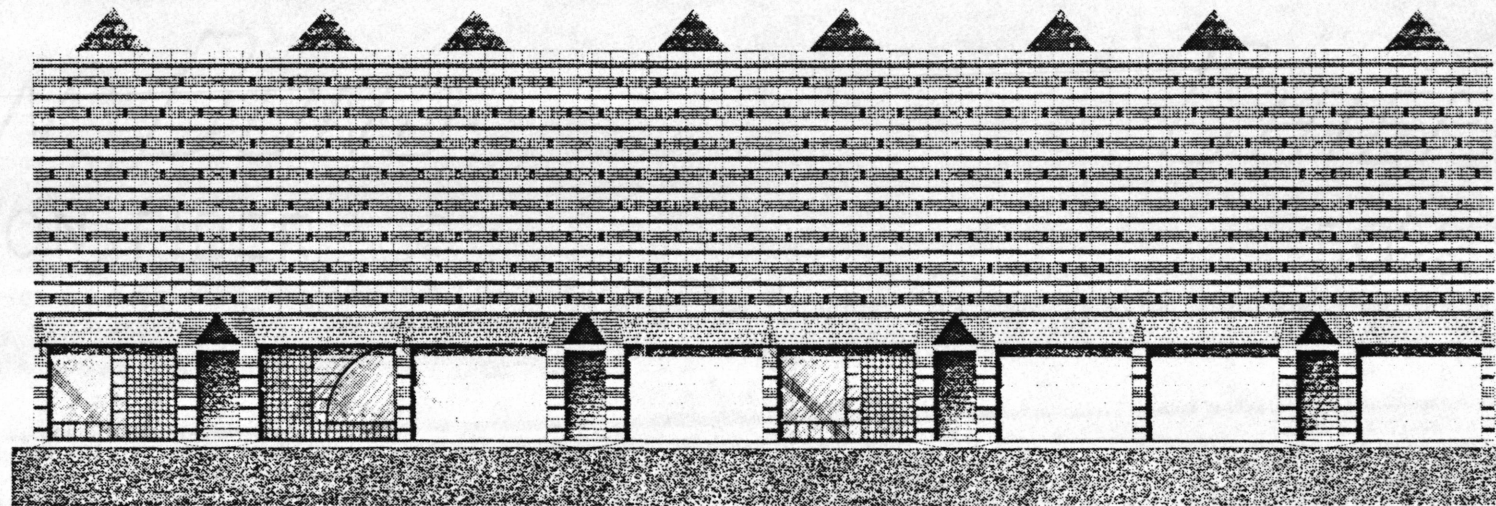
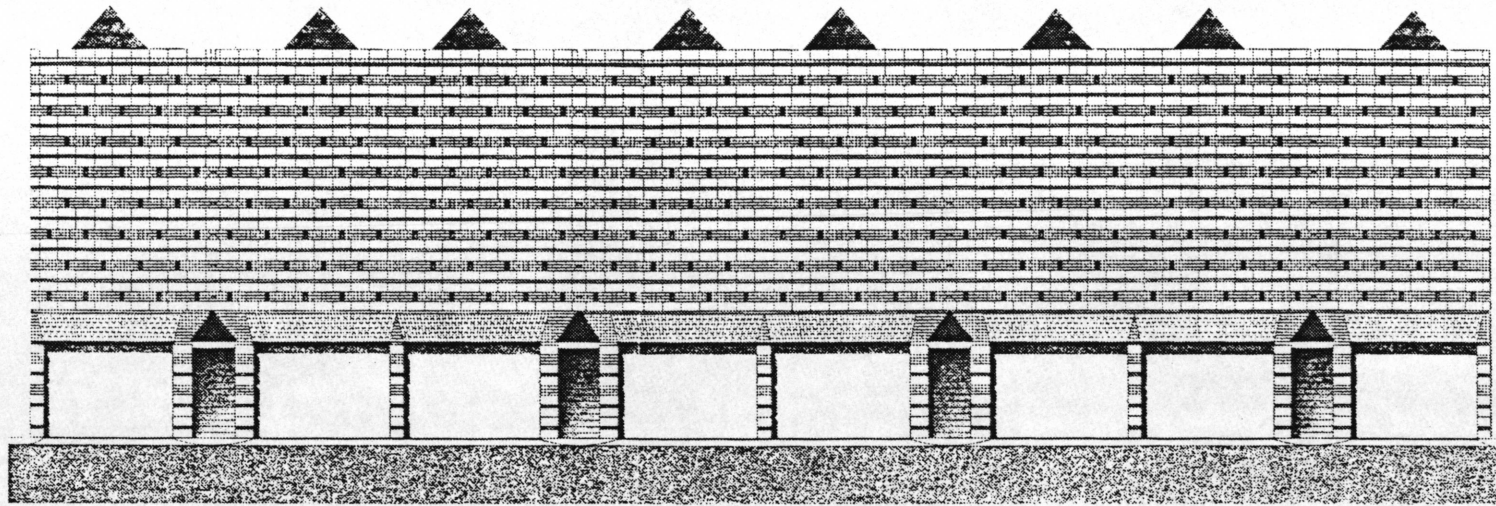
view from dining room

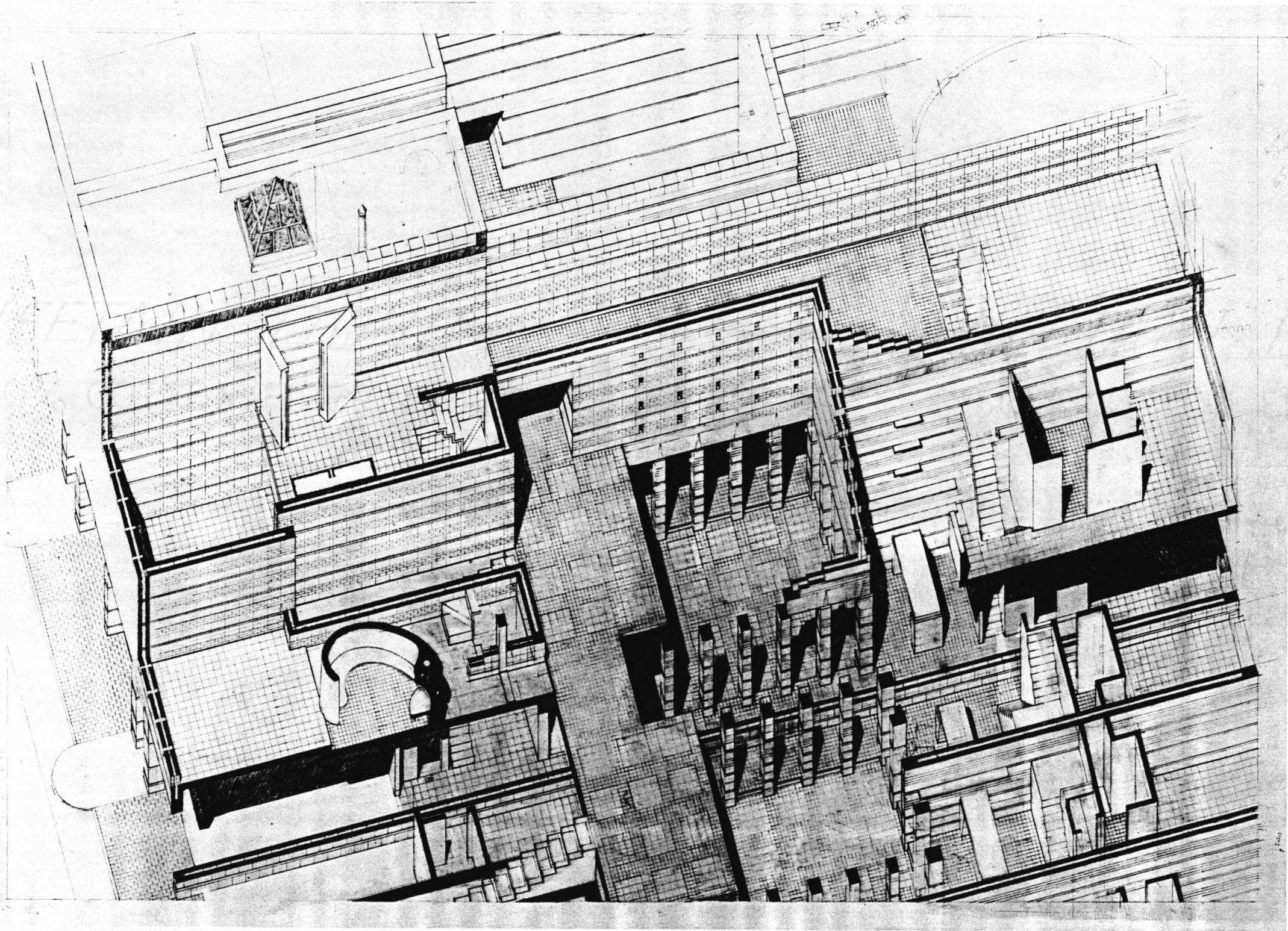




CHIEFTAIN BOY  
50% COTTON FIBER

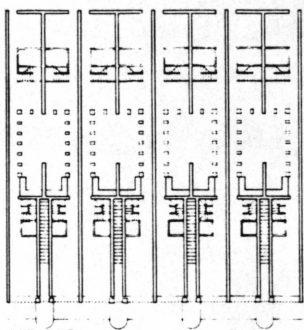




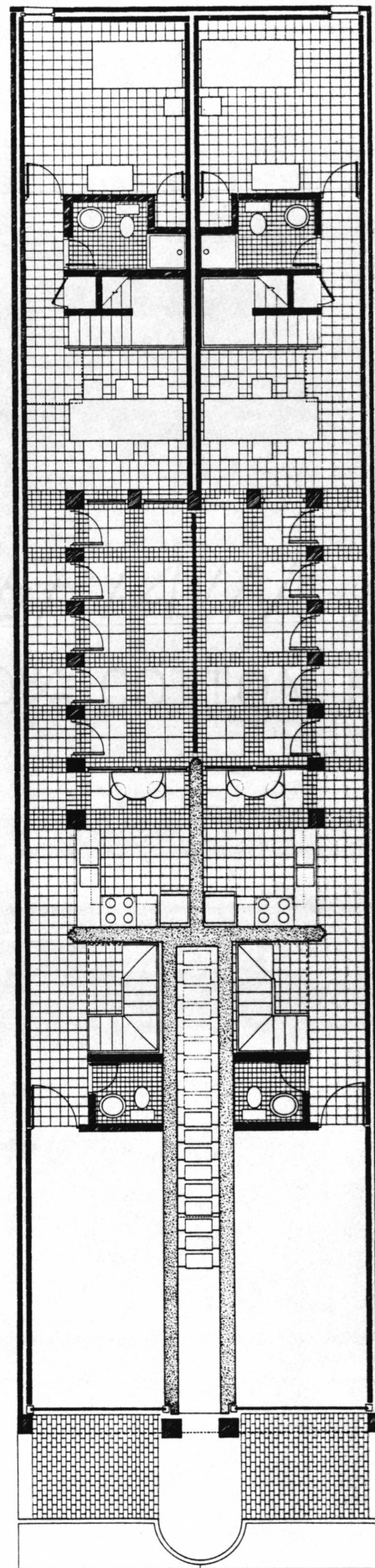
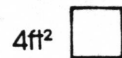


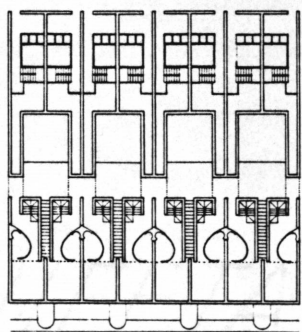
CHIEFTAIN BOND  
50% COTTON FIBER

CHIEFTAIN BOND  
50% COTTON FIBER

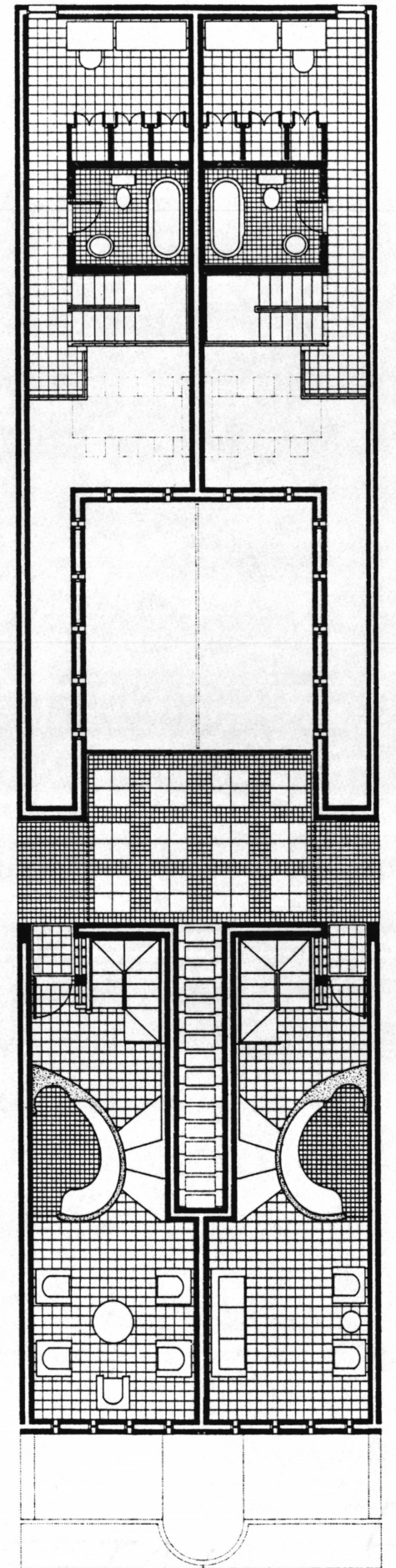


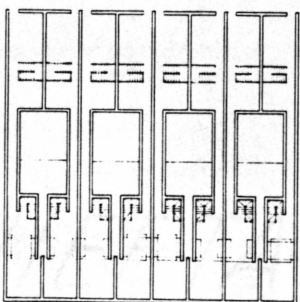
Ground Floor Plan



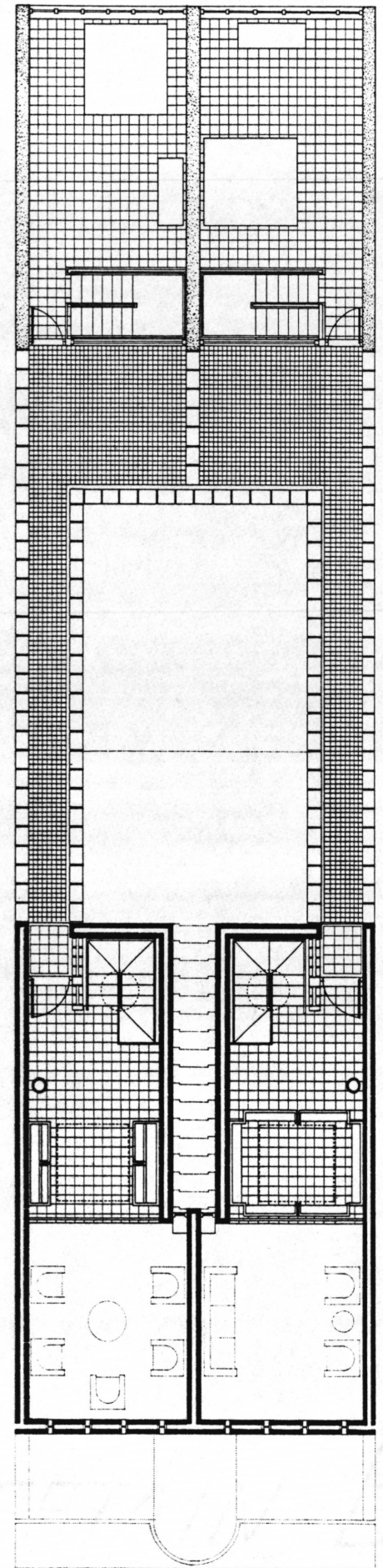


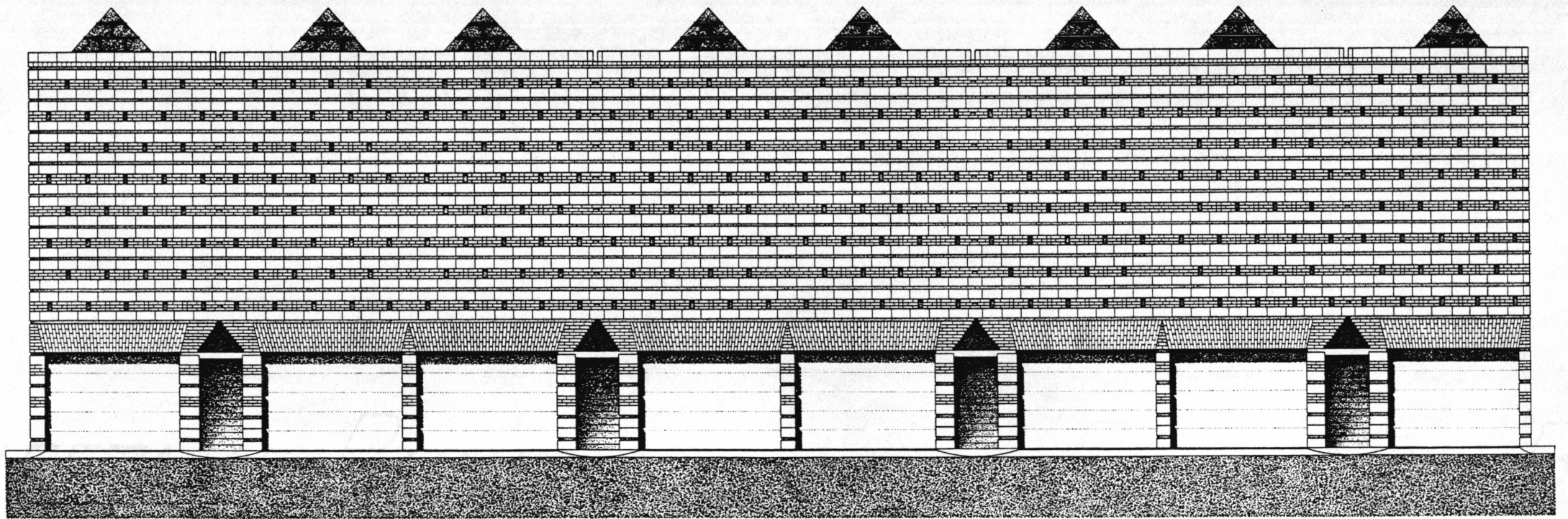
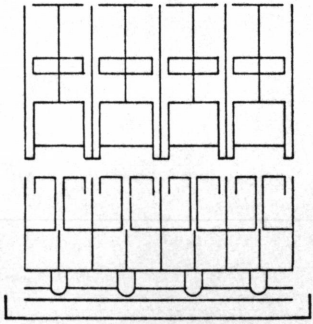
First Floor Plan





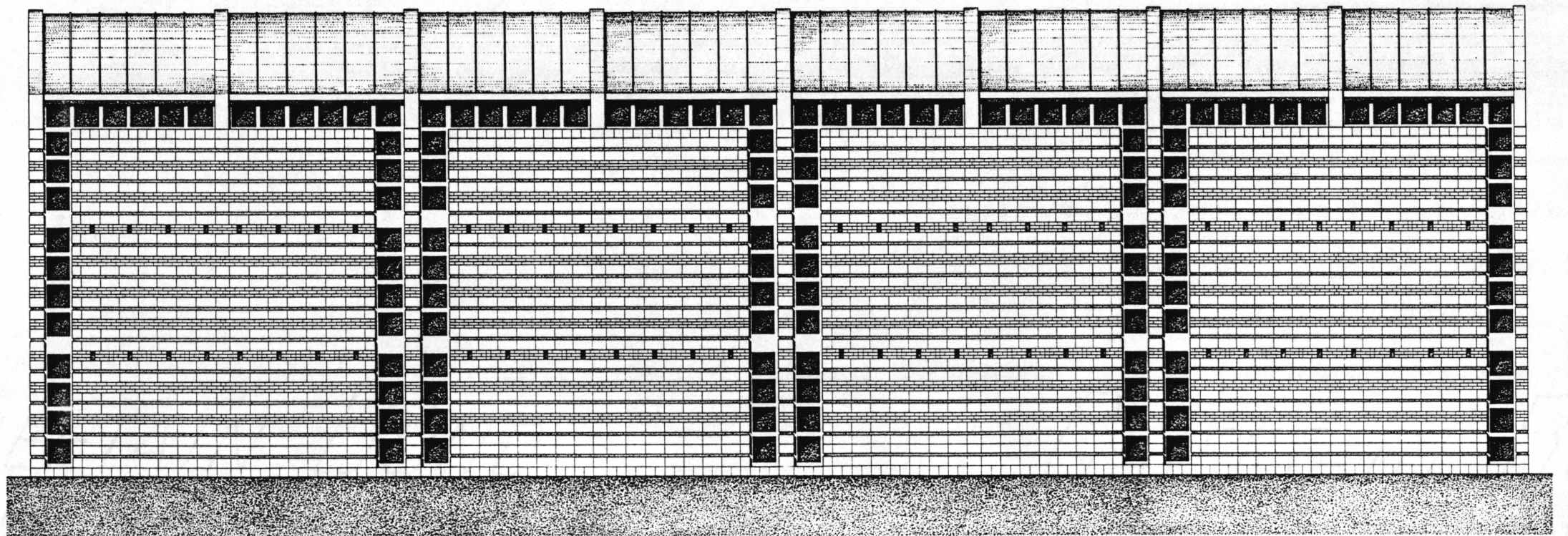
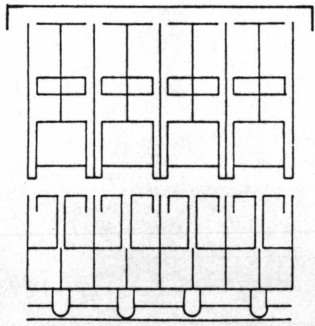
Second Floor Plan

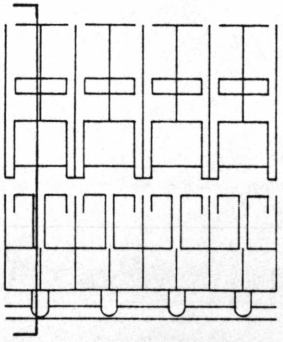




BOY COTTON FIBER

BOY COTTON FIBER



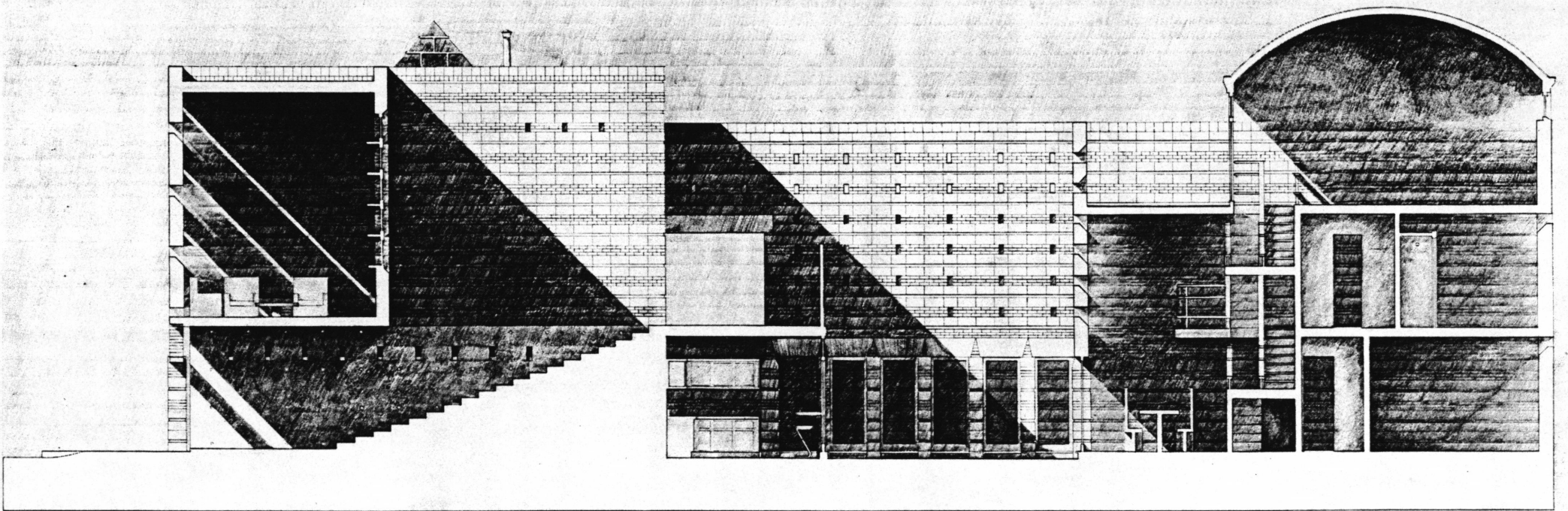


CHIEFTAIN BOND

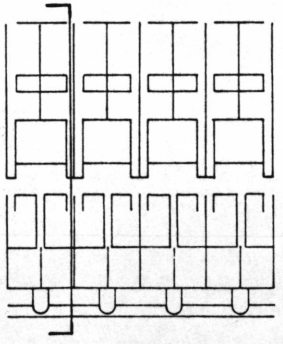
CHIEFTAIN BOND

50% COTTON FIBER

50% COTTON FIBER

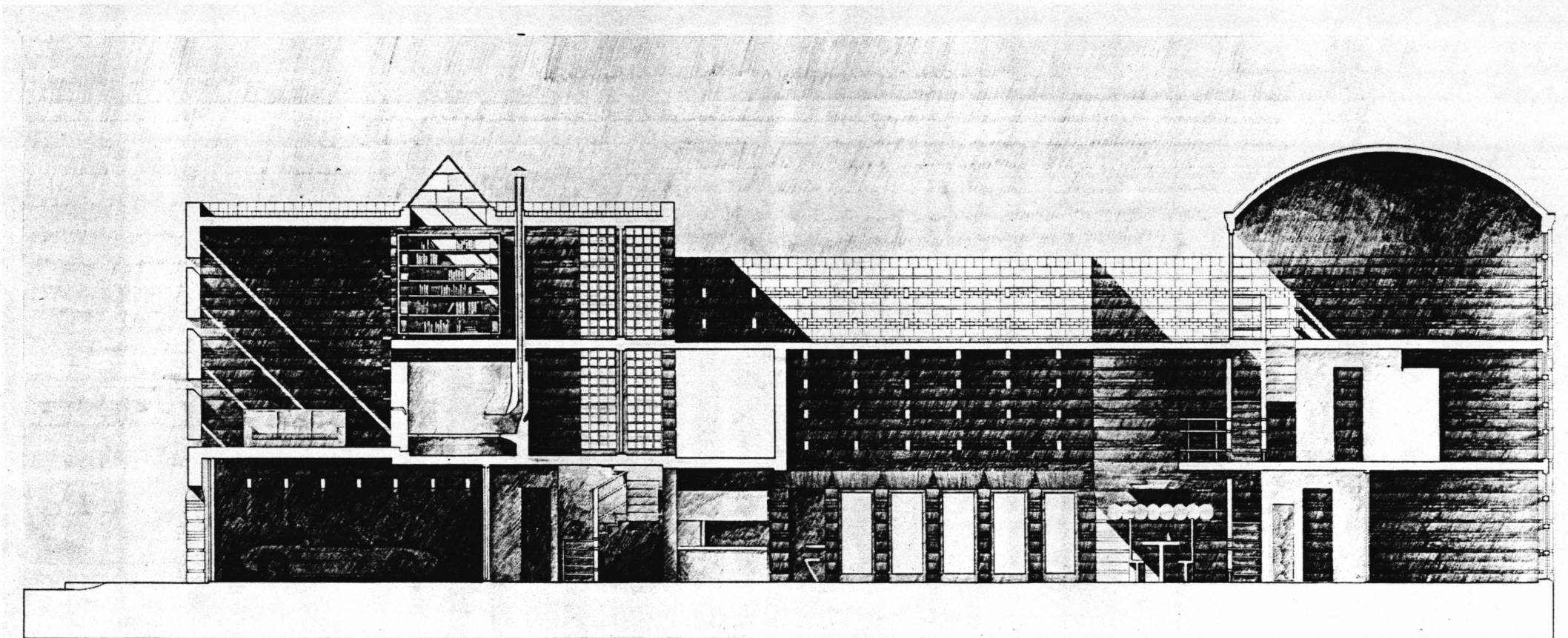


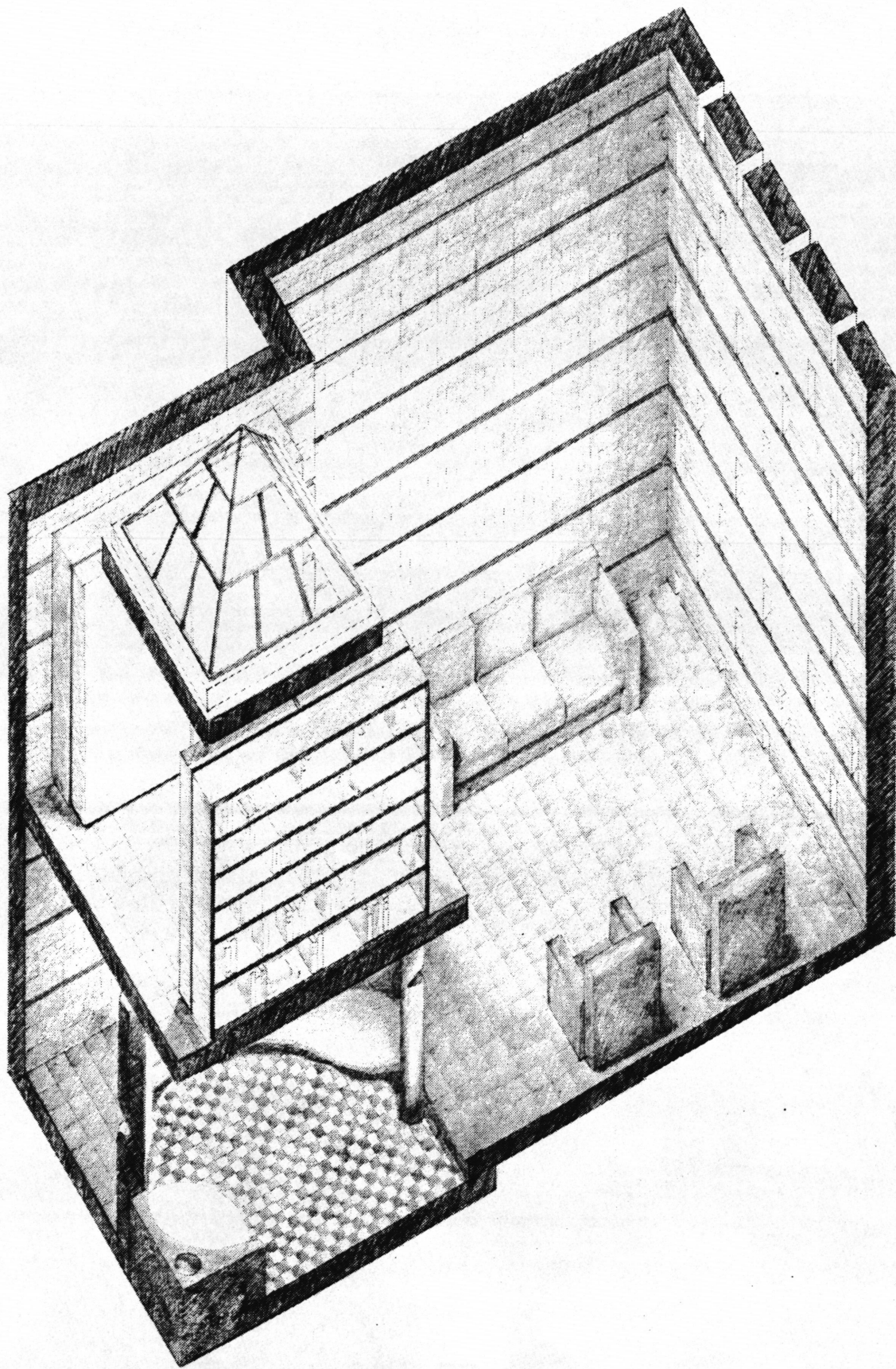


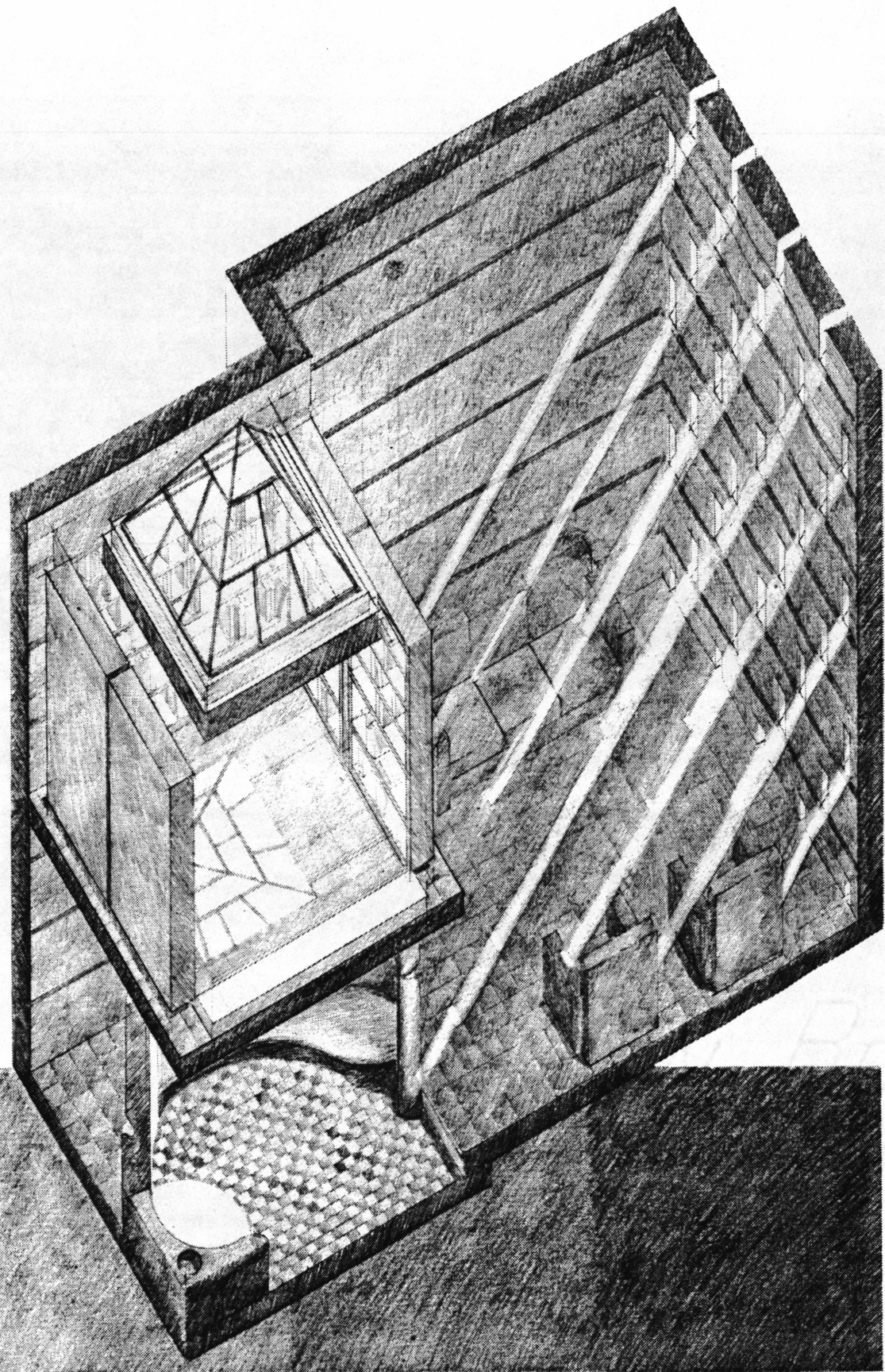


CHIEFTAIN BOND  
50% COTTON FIBER

CHIEFTAIN BOND  
50% COTTON FIBER







CHEETAH BOND  
COTTON FIBER

CHIEFTAIN BOND

CHIEFTAIN BOND

50% COTTON FIBER

50% COTTON FIBER



## Selected Bibliography

- Bachelard, Gaston, *The Poetics of Space*. Beacon Press, Boston, MA. 1964
- Benevelo, Leonardo, *The History of the City*. MIT Press, Cambridge, MA. 1980
- Colquhoun, Alan, *On Modern and Postmodern Space*.
- Conrads, Ulrich, *Programs and Manifestoes on 20th-Century Architecture*. MIT Press, Cambridge, MA. 1970
- Jaspers, Karl, *Man in the Modern Age*. Anchor Books, New York, NY. 1957
- Merton, Thomas, *Thoughts in Solitude*. Farrar, Straus and Giroux, New York, NY. 1956
- Wurman, Richard Saul, *What Will Be Has Always Been: The Words of Louis I. Kahn*. Rizzoli, New York, NY. 1986

**The vita has been removed from  
the scanned document**